

INFECTIOUS DISEASES WEEKLY REPORT

TOKYO IDWR

Tokyo Metropolitan Research Laboratory of Public Health

8 October 2002 / Number 39

- Number of patients with the diseases required notifying all the cases
- Number of patients with the diseases to be reported by the designated clinics and hospitals
- Disease trend graph (weekly reported cases per fixed-point in comparison)

Surveillance System in Tokyo, Japan

The diseases which all physicians must report

All physicians must report to health centers the incidence of the diseases which are shown at page one. Health centers electronically report the individual case to Tokyo Metropolitan Infectious Disease Surveillance Center.

Fixed-point surveillance

The numbers of patients who visit designated clinics or hospitals during a week are reported to health centers (There are 37 in Tokyo). And they electronically report the numbers to Tokyo Metropolitan Infectious Disease Surveillance Center. We have about 200 fixed points (clinics and hospitals) in Tokyo.

1st Week is early January and 52nd Week is end of December.

Tokyo Metropolitan Infectious Disease Surveillance Center
Tokyo Metropolitan Research Laboratory of Public Health

TEL:81-3-3363-3213 FAX:81-3-5332-7365

e-mail: idsc@tokyo-eiken.go.jp

URL: www.tokyo-eiken.go.jp

Number of patients with the diseases which all physicians must report

Category	Diseases	Tokyo					Japan	
		36th	37th	38th	39th	Total	39th	Total
I	Ebola hemorrhagic fever							
	Crimean-Congo hemorrhagic fever							
	Plague							
	Marburg disease							
	Lassa fever							
II	Cholera					14		44
	Shigellosis	4	5	5	4	80	12	551
	Typhoid fever	1			1	21	3	53
	Paratyphoid fever					10		27
	Acute poliomyelitis							
	Diphtheria							
III	Enterohemorrhagic <i>Escherichia coli</i> infection	4	10	6	6	159	39	2717
IV	Amebiasis	5	5	3	2	96	7	348
	Echinococcosis							7
	Yellow fever							
	Psittacosis					3		49
	Relapsing fever							
	Acute viral hepatitis				1	138	4	753
	Q fever					28	1	36
	Rabies							
	Cryptosporidiosis	1				4		107
	Creutzfeldt-Jakob Disease		1			7	2	96
	Sever invasive streptococcal infections					9	1	71
	Acquired immunodeficiency syndrome	7	11	8	10	285	14	686
	Coccidioidomycosis							3
	Giardiasis		1			41	1	89
	Hemorrhagic fever with renal syndrome							
	Meningococcal meningitis					1		5
	Congenital rubella syndrome							
	Anthrax							
	Scrub typhus (Tsumugamushi disease)					6	1	123
	Dengue fever			1		14		46
	Japanese spotted fever							17
	Japanese encephalitis							4
	Infant botulism							
	Syphilis	2	1	1	2	46	5	416
	Tetanus			2		6		71
	Vancomycin-resistant <i>enterococcus</i> infection					6		32
	Hantavirus pulmonary syndrome							
	Herpes B virus infection							
	Brucellosis					1		1
	Epidemic typhus							
Malaria	1			1	21		61	
Lyme disease					2		14	
Legionellosis		1			13	2	132	

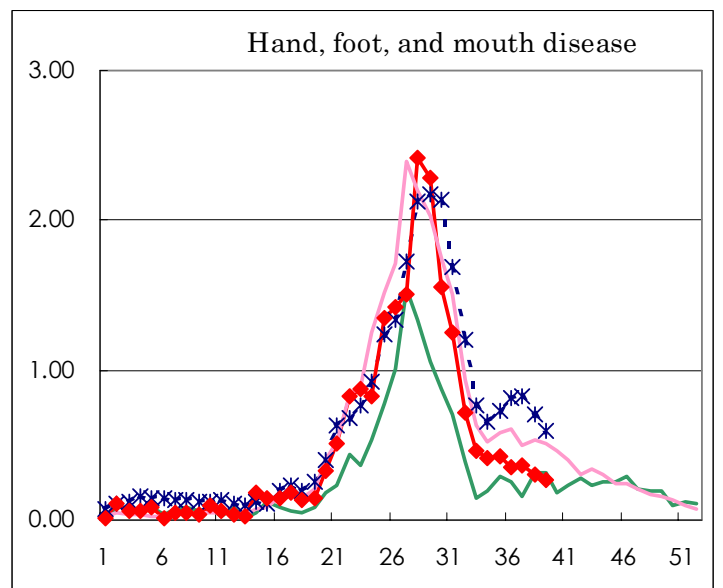
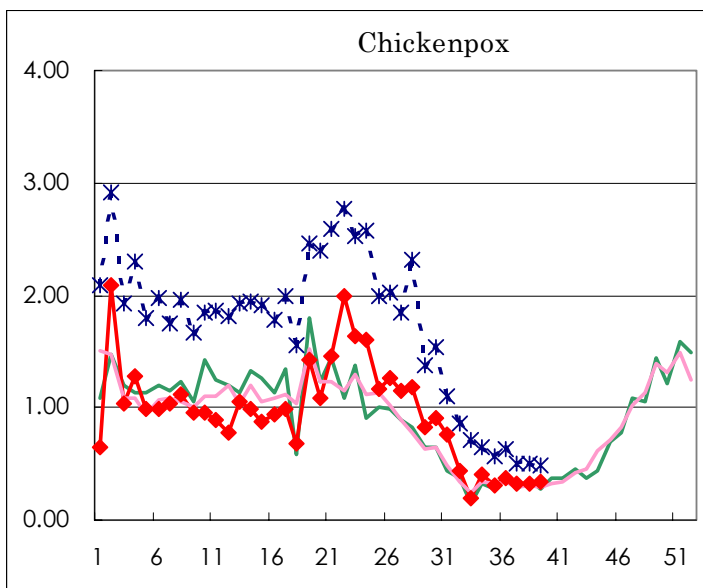
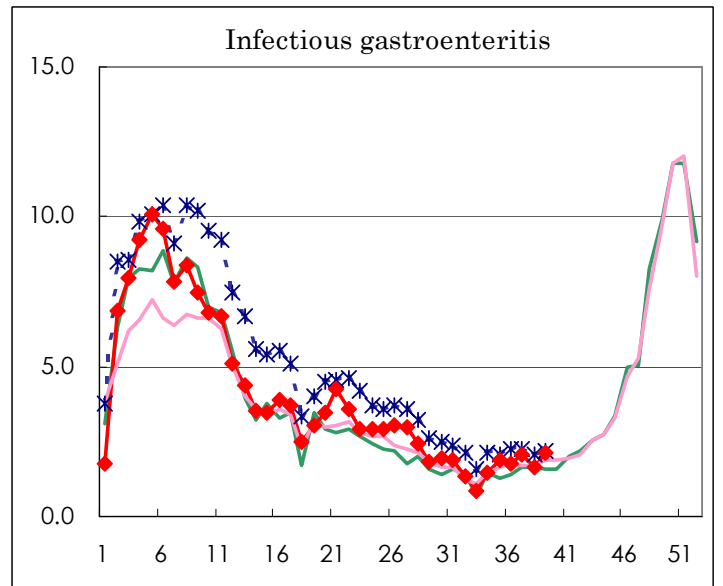
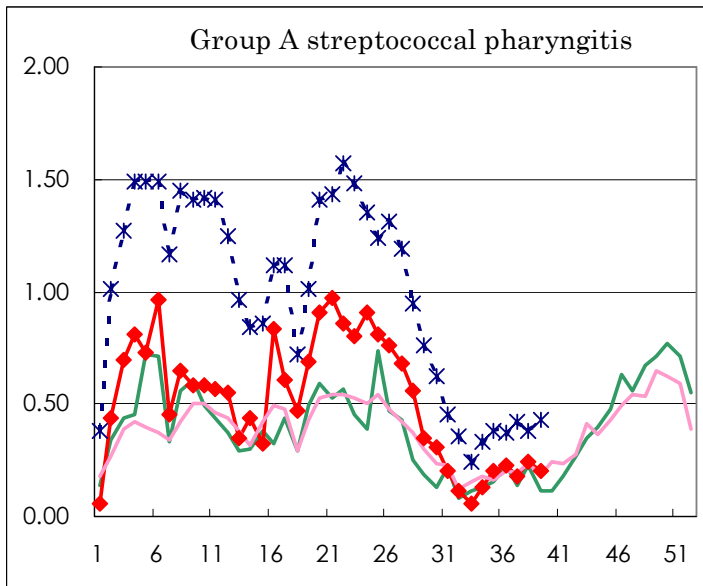
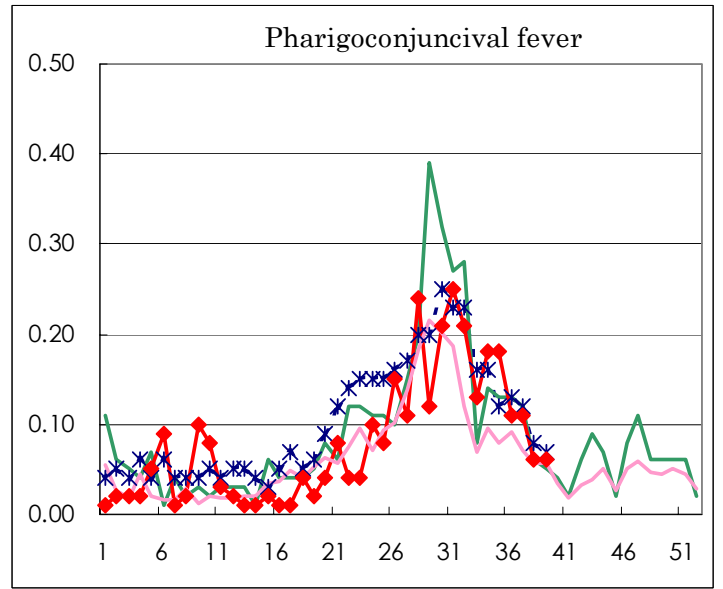
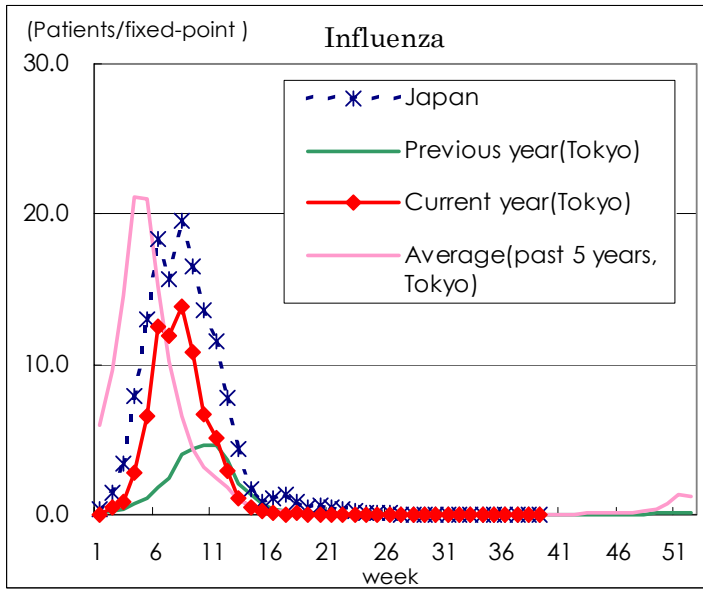
(Blank means 0.)

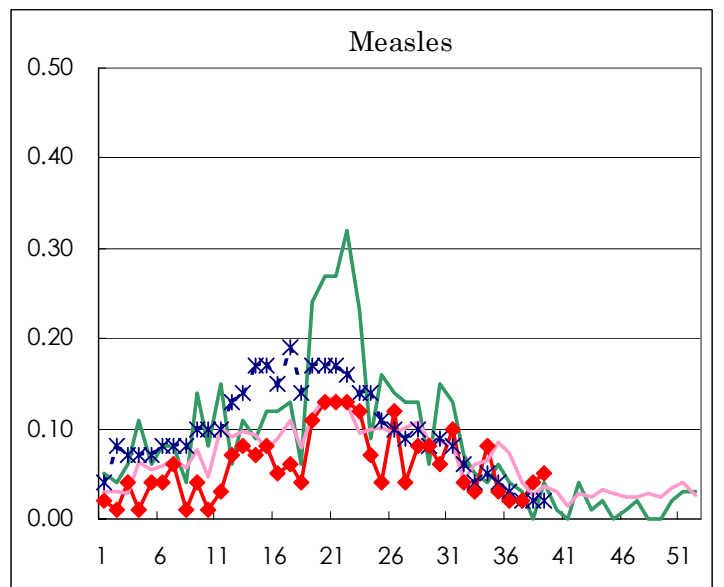
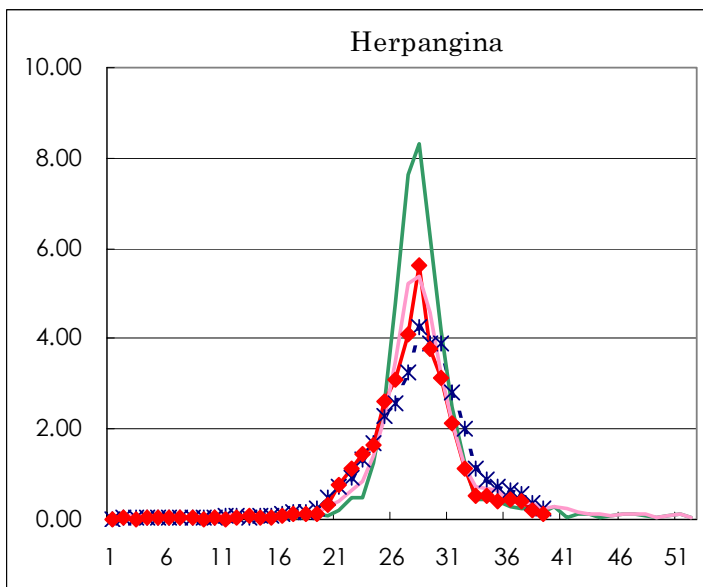
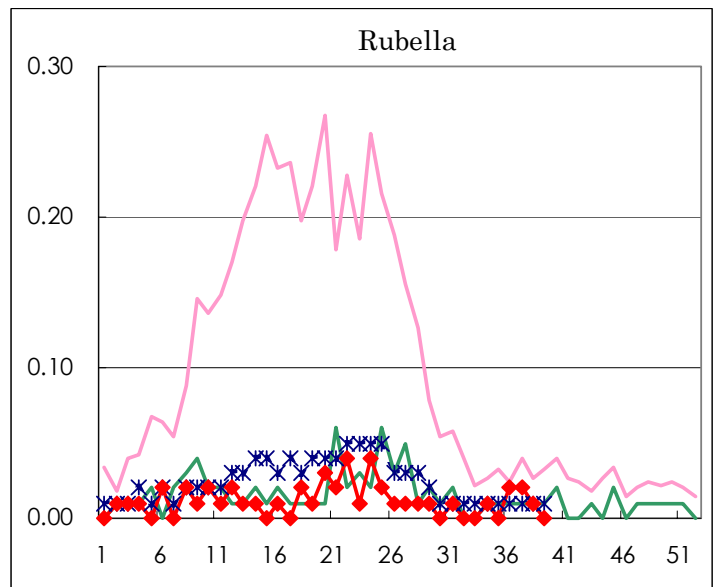
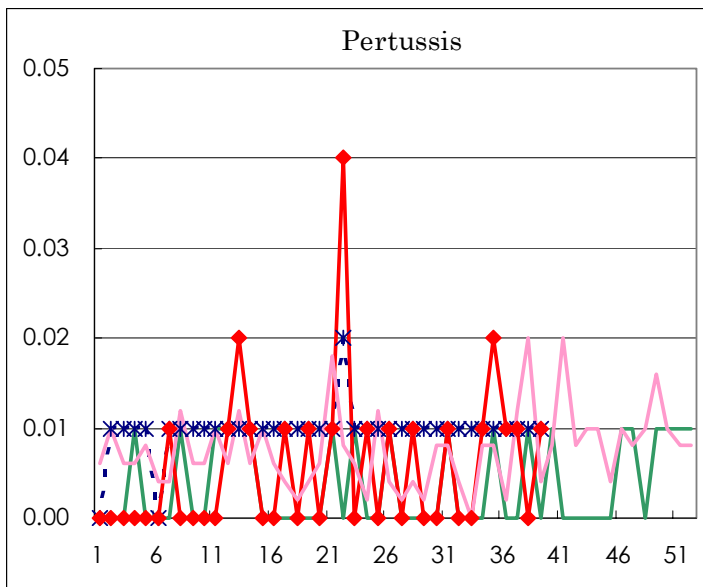
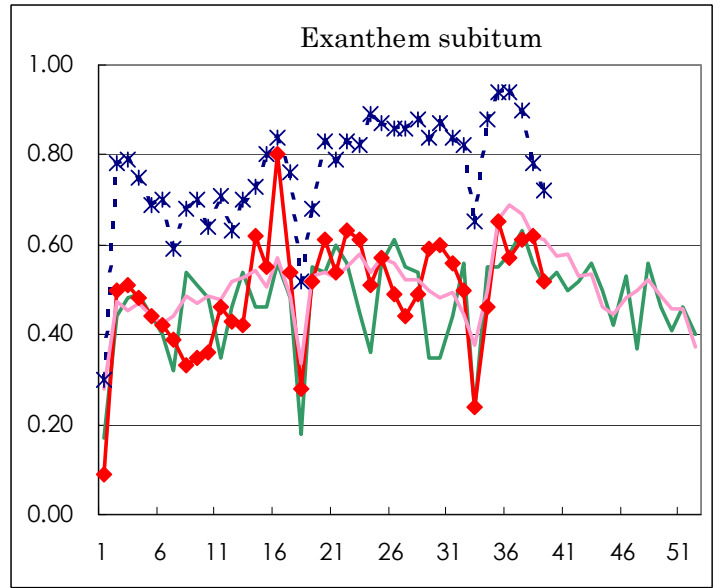
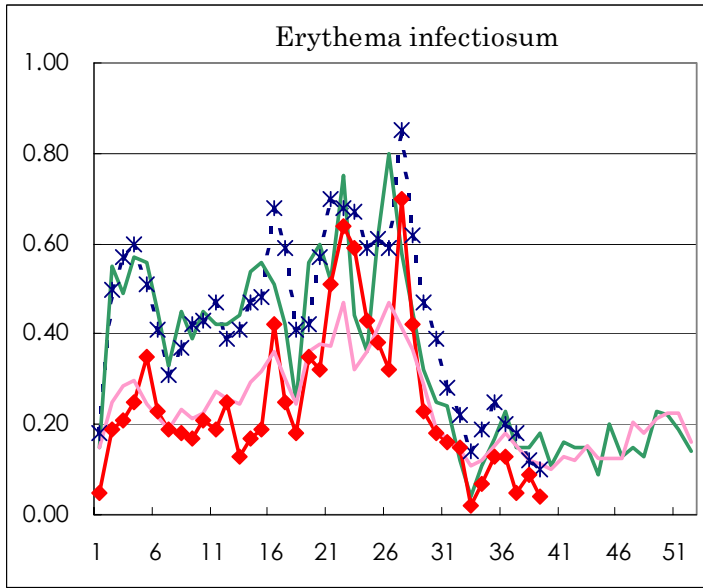
Number of patients with the diseases to be reported
by the designated clinics and hospitals

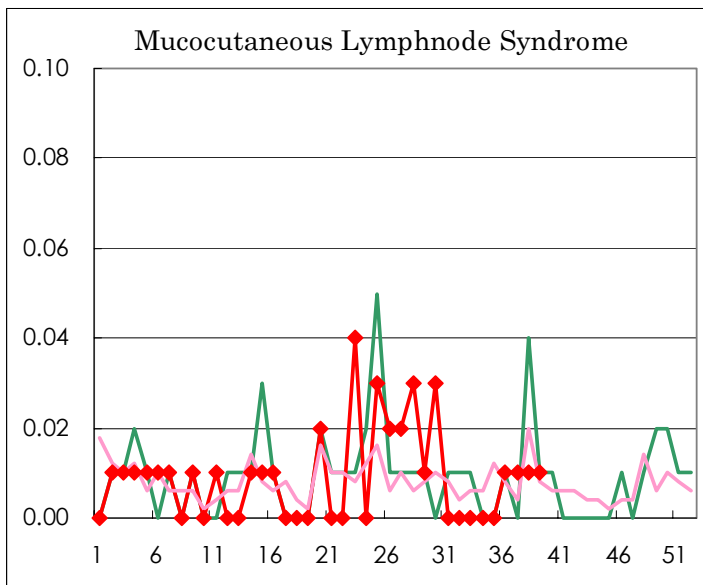
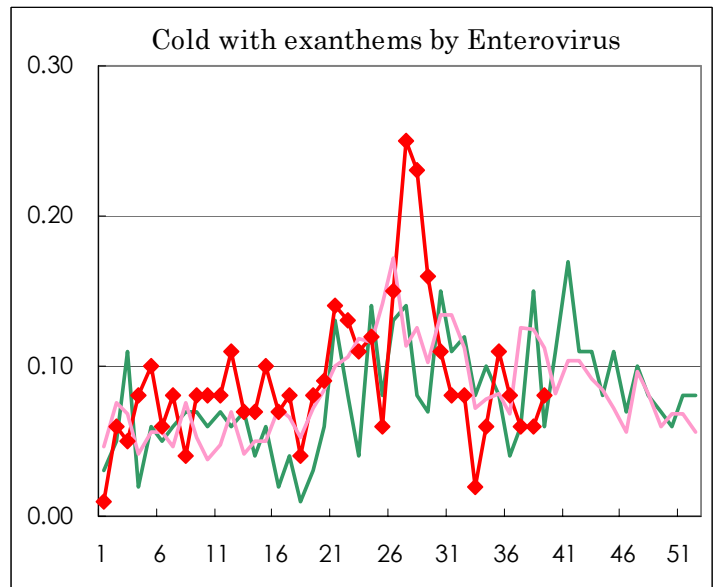
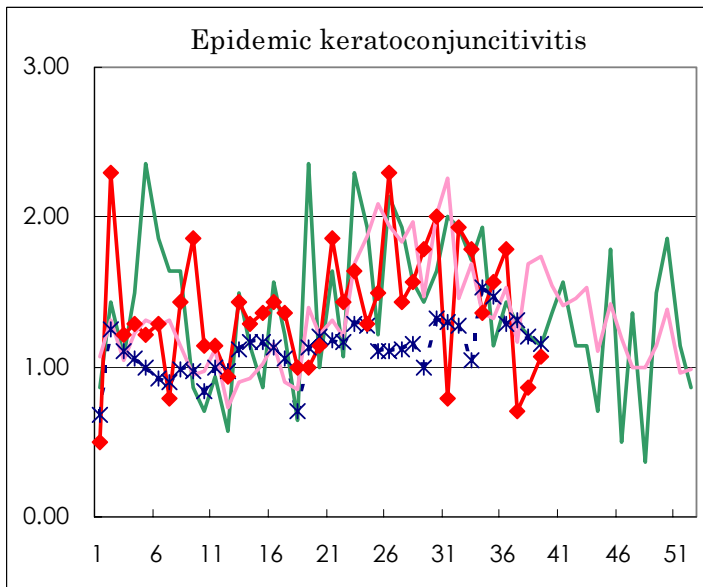
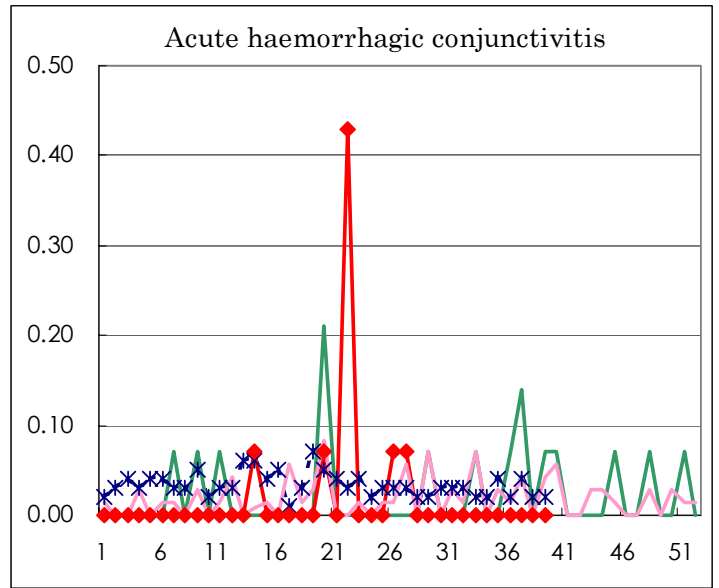
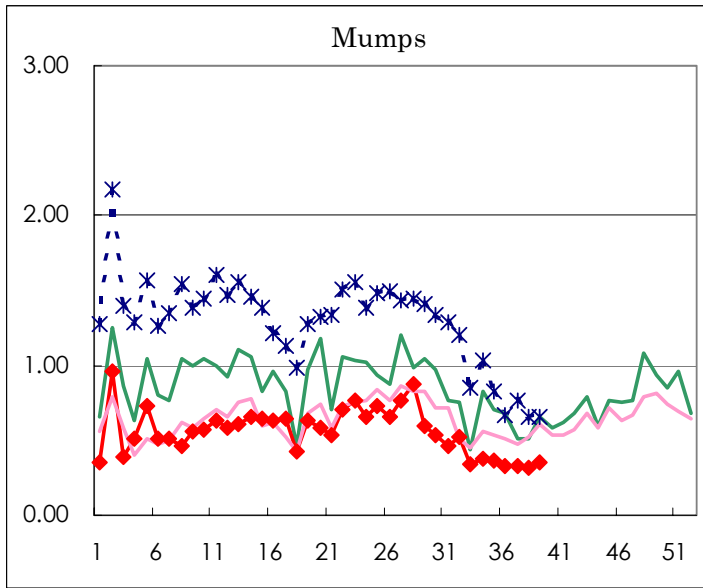
Diseases	Sex	Week(2002)				Total
		36th	37th	38th	39th	
Influenza	M					
	F					
Pharygoconjunctival fever	M	10	9	5	3	27
	F	5	6	3	6	20
Group A streptococcal pharyngitis	M	11	15	21	12	59
	F	21	10	13	17	61
Infectious gastroenteritis	M	157	160	138	166	621
	F	96	132	99	132	459
Chickenpox	M	29	22	22	27	100
	F	24	23	24	21	92
Hand, foot, and mouth disease	M	30	34	22	13	99
	F	20	17	21	25	83
Erythema infectiosum	M	9	2	10	3	24
	F	10	5	3	3	21
Exanthem subitum	M	41	56	46	36	179
	F	40	31	42	38	151
Pertussis	M	1	1		2	4
	F					
Rubella	M	1	2			3
	F	2	1	1		4
Herpangina	M	32	31	16	8	87
	F	29	24	15	8	76
Measles	M	1	2	3	3	9
	F	2	1	3	4	10
Mumps	M	30	24	30	28	112
	F	17	23	16	22	78
Cold with exanthems by Enterovirus	M	5	4	3	8	20
	F	6	4	6	4	20
Mucocutaneous Lymphnode Syndrome	M				1	1
	F	2	1	1		4
Acute hemorrhagic conjunctivitis	M					
	F					
Epidemic keratoconjunctivitis	M	16	7	5	8	36
	F	9	3	7	7	26
Acute encephalitis (excluding Japanese encephalitis)	M	1				1
	F	1		1		2
Bacterial meningitis	M	1				1
	F					
Aseptic meningitis	M					
	F	1	2			3
Mycoplasma pneumonia	M	1	3	1	1	6
	F	2	1	2	3	8
Chlamydial pneumonia (excluding psittacosis)	M		1			1
	F					
Measles in adults	M	1				1
	F	2		1		3

(Blank means 0.)

Disease Trend Graph (weekly reported cases per fixed-point in comparison)







Tokyo Metropolitan Government
Infectious Disease Surveillance Center

