

INFECTIOUS DISEASES WEEKLY REPORT

# TOKYO IDWR

Tokyo Metropolitan Research Laboratory of Public Health

22 October 2002 / Number 41

- Number of patients with the diseases required notifying all the cases
- Number of patients with the diseases to be reported by the designated clinics and hospitals
- Disease trend graph (weekly reported cases per fixed-point in comparison)

## Surveillance System in Tokyo, Japan

### The diseases which all physicians must report

All physicians must report to health centers the incidence of the diseases which are shown at page one. Health centers electronically report the individual case to Tokyo Metropolitan Infectious Disease Surveillance Center.

### Fixed-point surveillance

The numbers of patients who visit designated clinics or hospitals during a week are reported to health centers ( There are 37 in Tokyo). And they electronically report the numbers to Tokyo Metropolitan Infectious Disease Surveillance Center. We have about 200 fixed points (clinics and hospitals) in Tokyo.

1<sup>st</sup> Week is early January and 52<sup>nd</sup> Week is end of December.

Tokyo Metropolitan Infectious Disease Surveillance Center  
Tokyo Metropolitan Research Laboratory of Public Health

TEL:81-3-3363-3213 FAX:81-3-5332-7365

e-mail: [idsc@tokyo-eiken.go.jp](mailto:idsc@tokyo-eiken.go.jp)

URL: [www.tokyo-eiken.go.jp](http://www.tokyo-eiken.go.jp)

## Number of patients with the diseases which all physicians must report

Category	Diseases	Tokyo					Japan	
		38th	39th	40th	41st	Total	41st	Total
I	Ebola hemorrhagic fever							
	Crimean-Congo hemorrhagic fever							
	Plague							
	Marburg disease							
	Lassa fever							
II	Cholera					14		44
	Shigellosis	5	4	3	2	85	9	576
	Typhoid fever		1			21		53
	Paratyphoid fever					10		27
	Acute poliomyelitis							
	Diphtheria							
III	Enterohemorrhagic <i>Escherichia coli</i> infection	6	6	6	3	168	68	2845
IV	Amebiasis	3	2	5	2	103	2	363
	Echinococcosis							7
	Yellow fever							
	Psittacosis					3		49
	Relapsing fever							
	Acute viral hepatitis		1		5	143	3	779
	Q fever					28		36
	Rabies							
	Cryptosporidiosis					4		107
	Creutzfeldt-Jakob Disease			1		8	2	101
	Sever invasive streptococcal infections					9		72
	Acquired immunodeficiency syndrome	8	10	6	8	299	8	721
	Coccidioidomycosis							3
	Giardiasis				1	42	2	94
	Hemorrhagic fever with renal syndrome							
	Meningococcal meningitis					1		5
	Congenital rubella syndrome							
	Anthrax							
	Scrub typhus (Tsutsugamushi disease)					6		127
	Dengue fever	1				14		46
	Japanese spotted fever						1	19
	Japanese encephalitis							5
	Infant botulism							
	Syphilis	1	2	3	1	50	4	440
	Tetanus	2				6	1	79
	Vancomycin-resistant <i>enterococcus</i> infection					6		32
	Hantavirus pulmonary syndrome							
	Helpes B virus infection							
	Brucellosis					1		1
	Epidemic typhus							
Malaria		1	3		24		64	
Lyme disease					2		14	
Legionellosis			1	1	15	3	139	

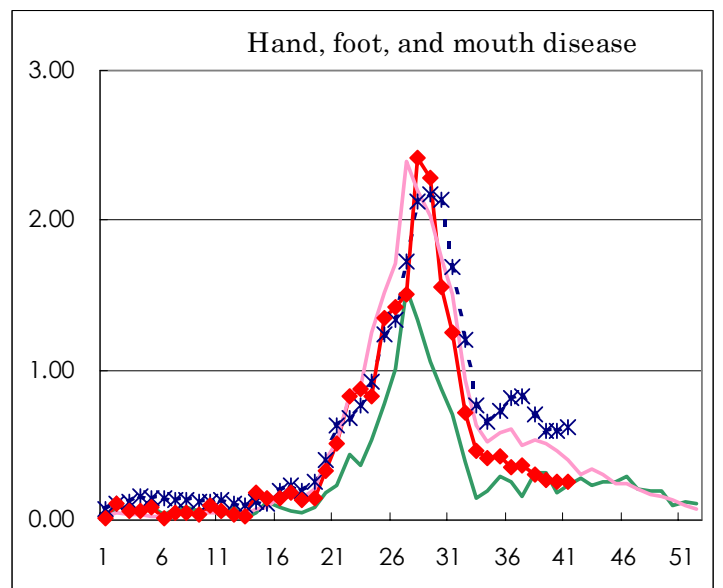
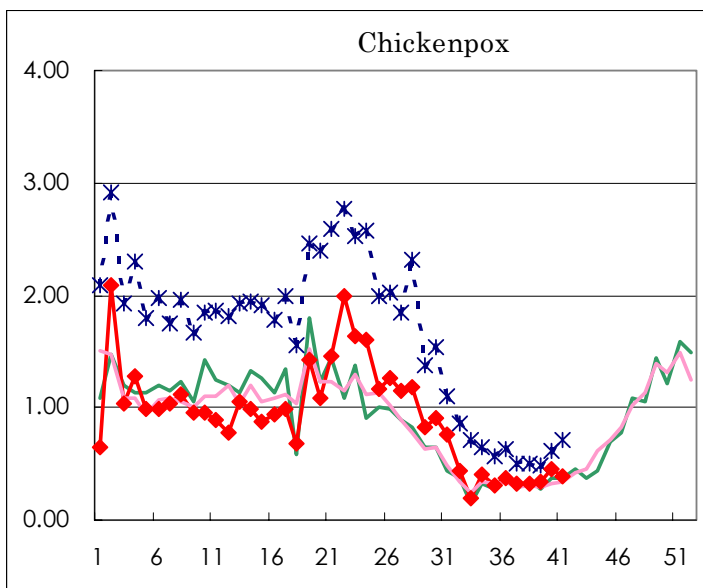
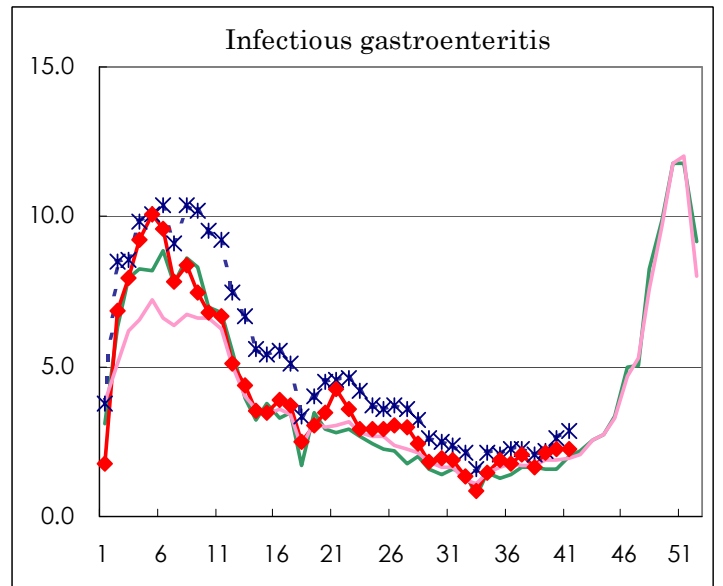
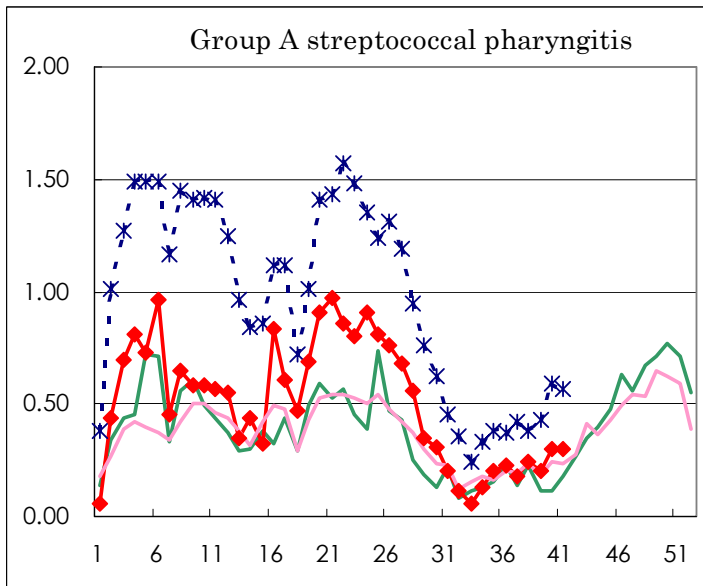
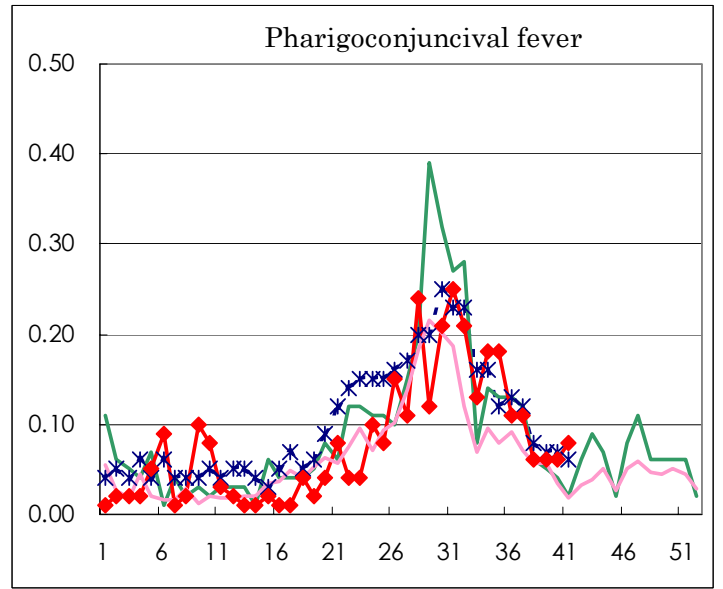
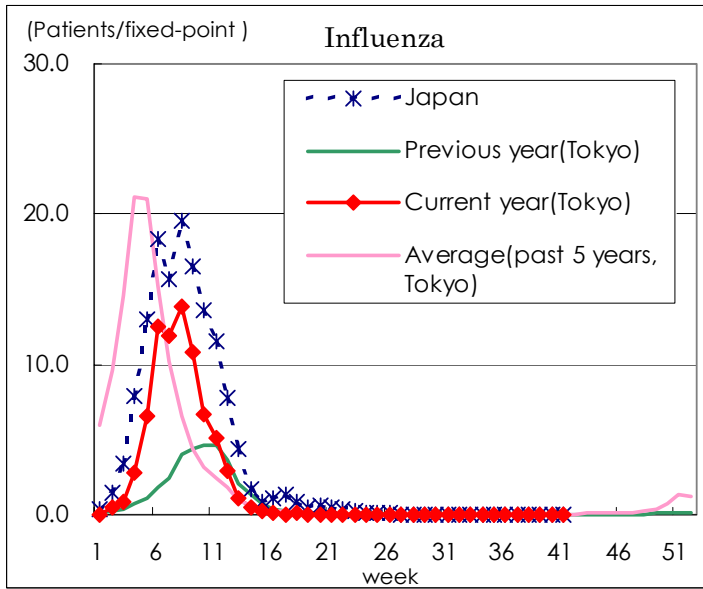
( Blank means 0. )

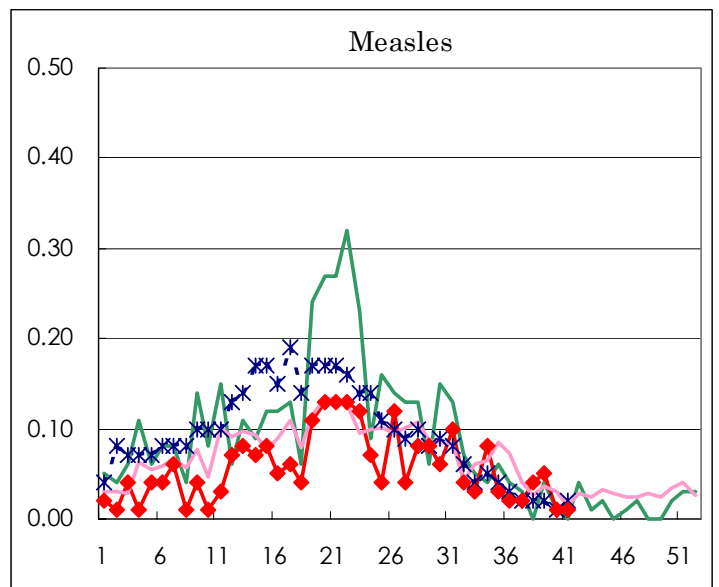
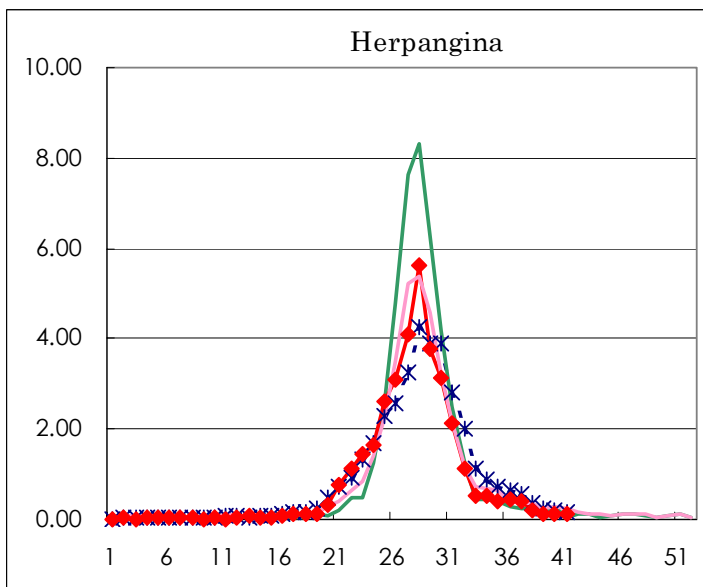
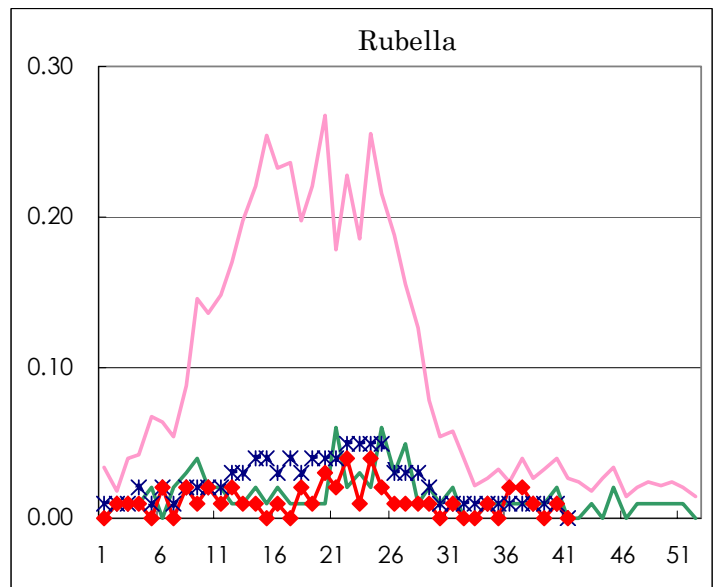
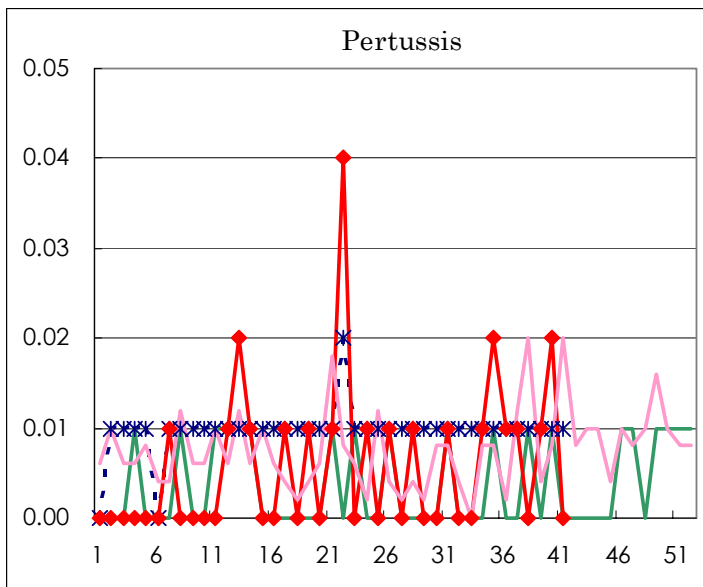
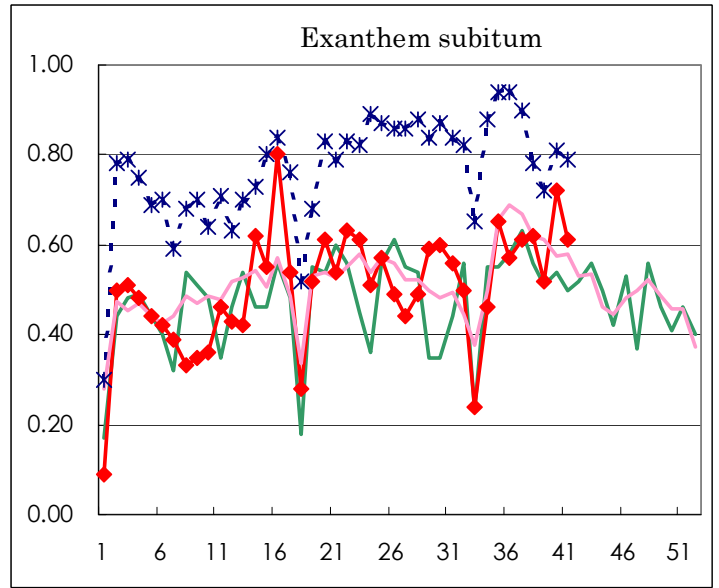
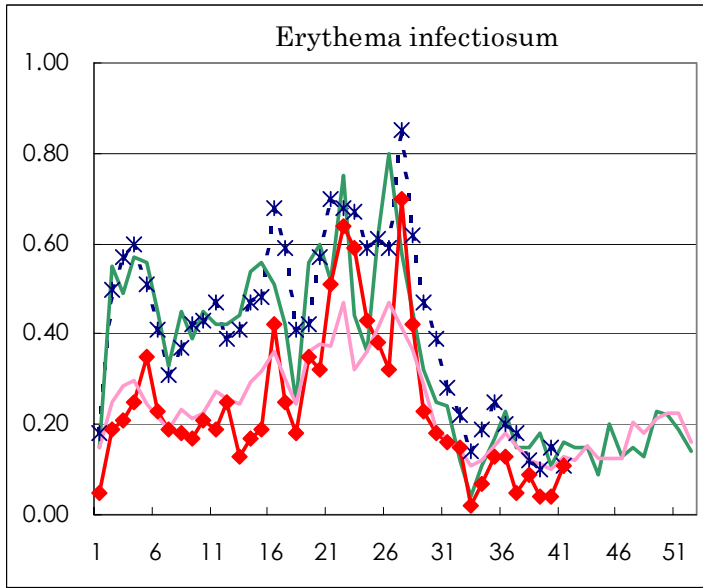
Number of patients with the diseases to be reported  
by the designated clinics and hospitals

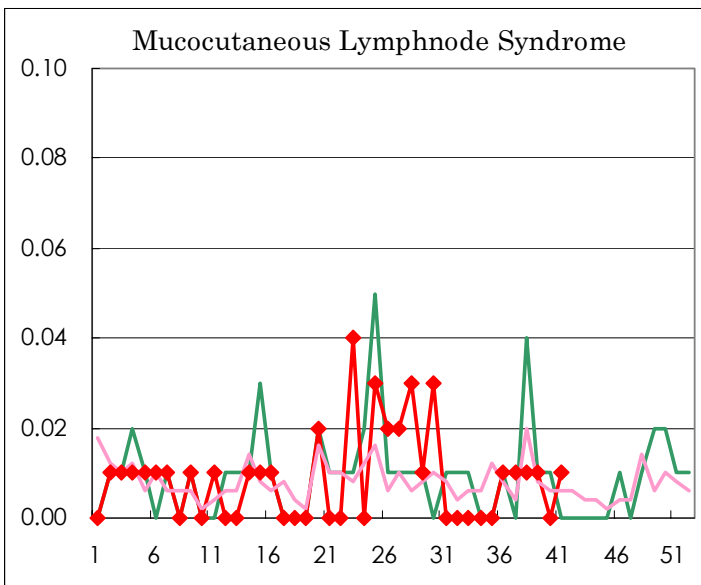
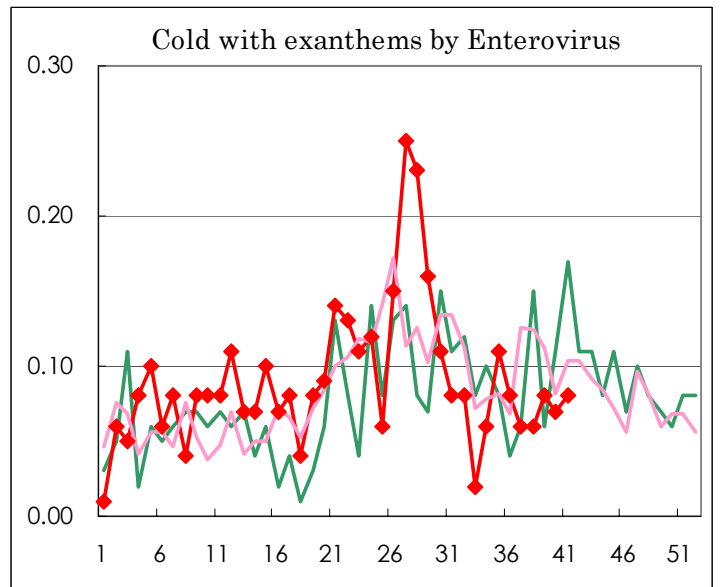
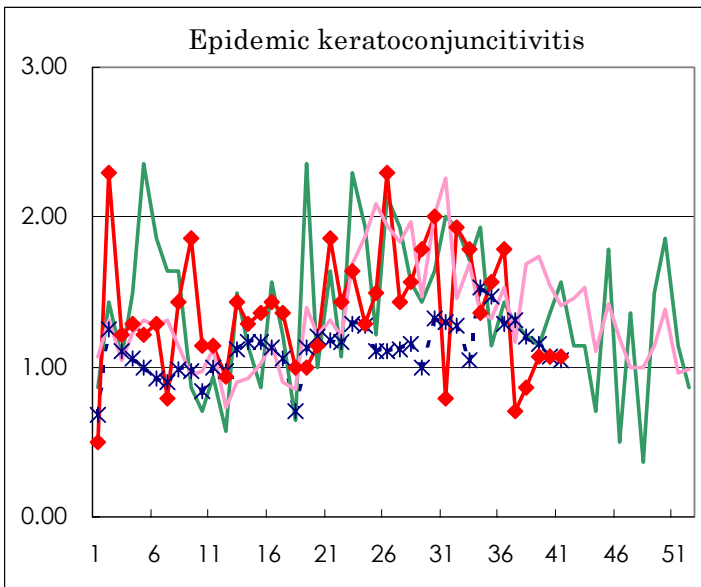
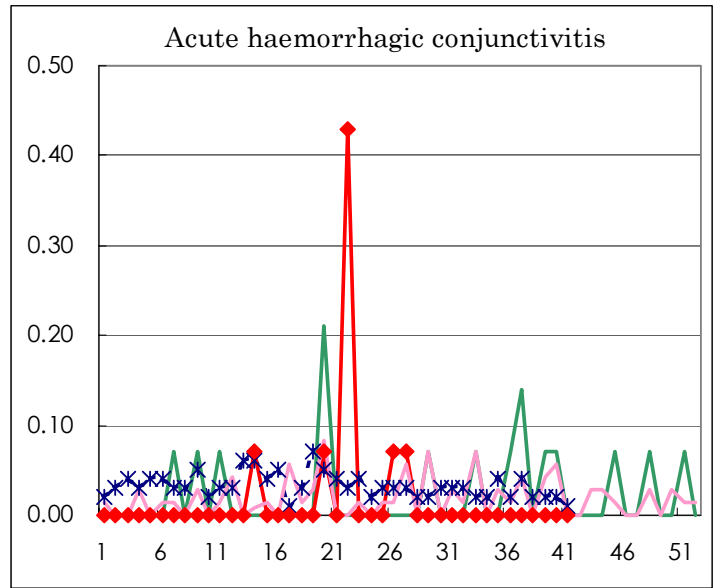
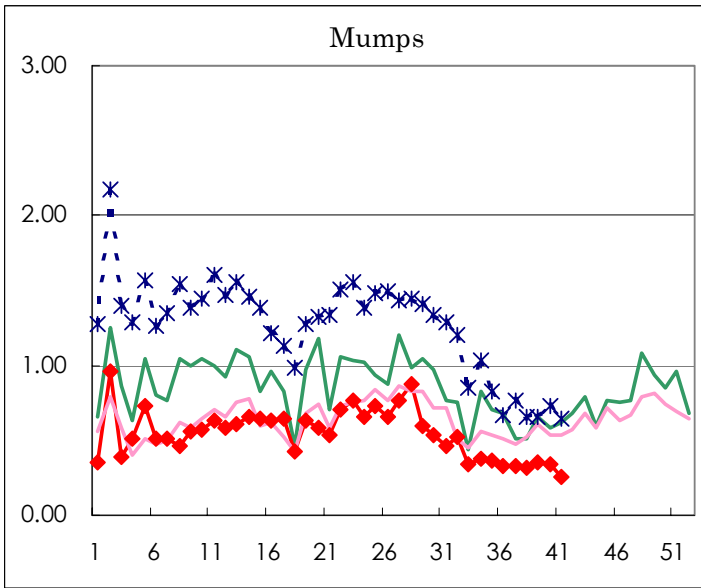
Diseases	Sex	Week(2002)				Total
		38th	39th	40th	41st	
Influenza	M					
	F					
Pharygoconjunctival fever	M	5	3	7	6	21
	F	3	6	1	6	16
Group A streptococcal pharyngitis	M	21	12	18	26	77
	F	13	17	24	16	70
Infectious gastroenteritis	M	138	166	173	182	659
	F	99	132	150	137	518
Chickenpox	M	22	27	32	27	108
	F	24	21	32	29	106
Hand, foot, and mouth disease	M	22	13	20	23	78
	F	21	25	15	12	73
Erythema infectiosum	M	10	3	2	4	19
	F	3	3	3	11	20
Exanthem subitum	M	46	36	44	49	175
	F	42	38	58	38	176
Pertussis	M		2	2		4
	F			1		1
Rubella	M			1		1
	F	1				1
Herpangina	M	16	8	11	4	39
	F	15	8	7	12	42
Measles	M	3	3		1	7
	F	3	4	1		8
Mumps	M	30	28	23	20	101
	F	16	22	25	15	78
Cold with exanthems by Enterovirus	M	3	8	4	3	18
	F	6	4	6	8	24
Mucocutaneous Lymphnode Syndrome	M		1		1	2
	F	1			1	2
Acute hemorrhagic conjunctivitis	M					
	F					
Epidemic keratoconjunctivitis	M	5	8	11	10	34
	F	7	7	4	5	23
Acute encephalitis (excluding Japanese encephalitis)	M					
	F	1				1
Bacterial meningitis	M					
	F					
Aseptic meningitis	M			2		2
	F			1		1
Mycoplasma pneumonia	M	1	1	1	3	6
	F	3	3	2	2	10
Chlamydial pneumonia (excluding psittacosis)	M					
	F			1		1
Measles in adults	M				1	1
	F	1			1	2

( Blank means 0. )

# Disease Trend Graph (weekly reported cases per fixed-point in comparison)







Tokyo Metropolitan Government  
**Infectious Disease Surveillance Center**

