

INFECTIOUS DISEASES WEEKLY REPORT

TOKYO IDWR

Tokyo Metropolitan Research Laboratory of Public Health

10 December 2002 / Number 48

- Number of patients with the diseases required notifying all the cases
- Number of patients with the diseases to be reported by the designated clinics and hospitals
- Disease trend graph (weekly reported cases per fixed-point in comparison)

Surveillance System in Tokyo, Japan

The diseases which all physicians must report

All physicians must report to health centers the incidence of the diseases which are shown at page one. Health centers electronically report the individual case to Tokyo Metropolitan Infectious Disease Surveillance Center.

Fixed-point surveillance

The numbers of patients who visit designated clinics or hospitals during a week are reported to health centers (There are 37 in Tokyo). And they electronically report the numbers to Tokyo Metropolitan Infectious Disease Surveillance Center. We have about 200 fixed points (clinics and hospitals) in Tokyo.

1st Week is early January and 52nd Week is end of December.

Tokyo Metropolitan Infectious Disease Surveillance Center
Tokyo Metropolitan Research Laboratory of Public Health

TEL:81-3-3363-3213 FAX:81-3-5332-7365
e-mail:ids@tokyo-eiken.go.jp
URL:www.tokyo-eiken.go.jp

Number of patients with the diseases which all physicians must report

Category	Diseases	Tokyo					Japan	
		45th	46th	47th	48th	Total	48th	Total
I	Ebola hemorrhagic fever							
	Crimean-Congo hemorrhagic fever							
	Plague							
	Marburg disease							
	Lassa fever							
II	Cholera					14		51
	Shigellosis	2	1	2	1	101	9	653
	Typhoid fever					22		60
	Paratyphoid fever					11		30
	Acute poliomyelitis							
	Diphtheria							
III	Enterohemorrhagic <i>Escherichia coli</i> infection	1			1	178	19	3071
IV	Amebiasis	2	2	1	1	114	6	416
	Echinococcosis							9
	Yellow fever							
	Psittacosis		1			5		55
	Relapsing fever							
	Acute viral hepatitis	2	2		3	156	5	868
	Q fever		2	1		31		41
	Rabies							
	Cryptosporidiosis					4		107
	Creutzfeldt-Jakob Disease			1	1	10	3	128
	Sever invasive streptococcal infections			2	1	12	2	84
	Acquired immunodeficiency syndrome	7	2	9	8	353	7	833
	Coccidioidomycosis							3
	Giardiasis		1		1	45	2	102
	Hemorrhagic fever with renal syndrome							
	Meningococcal meningitis					1	1	7
	Congenital rubella syndrome							
	Anthrax							
	Scrub typhus (Tsutsugamushi disease)					6	13	249
	Dengue fever			1		15		48
	Japanese spotted fever						1	36
	Japanese encephalitis							7
	Infant botulism							
	Syphilis				2	55	4	516
	Tetanus					6	4	98
	Vancomycin-resistant <i>enterococcus</i> infection					7		39
	Hantavirus pulmonary syndrome							
	Helpes B virus infection							
	Brucellosis					1		1
	Epidemic typhus							
	Malaria		2			28		75
	Lyme disease					2		15
Legionellosis	1				19		157	
West Nile fever								

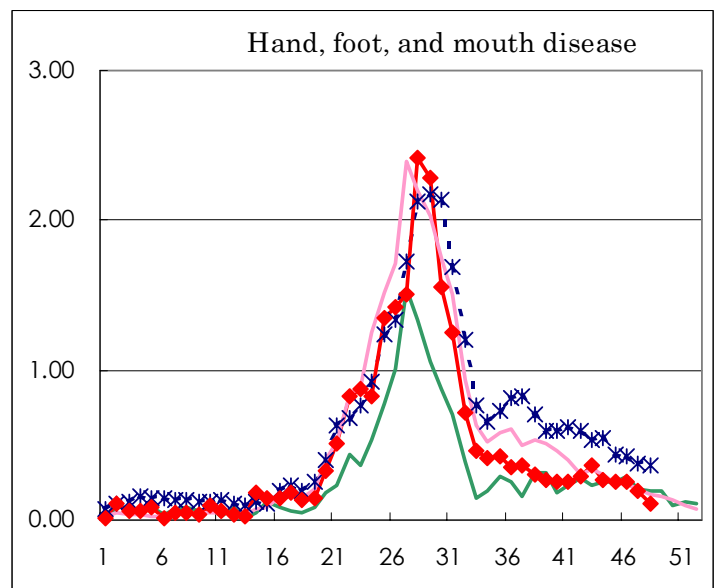
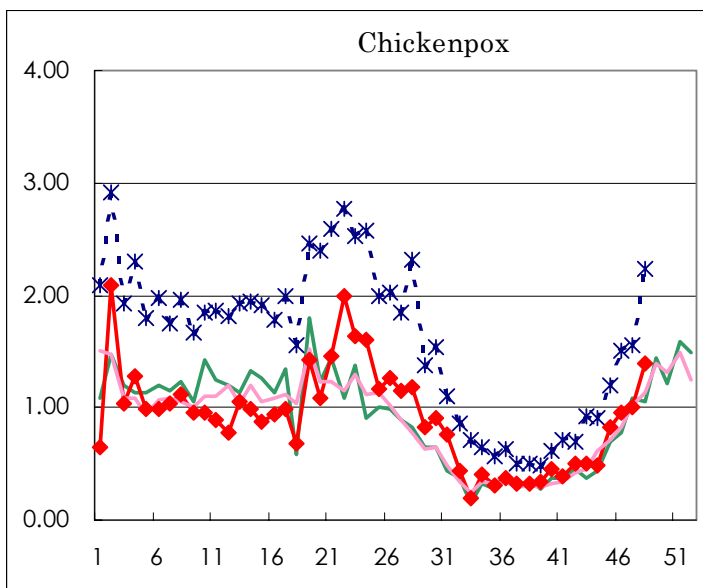
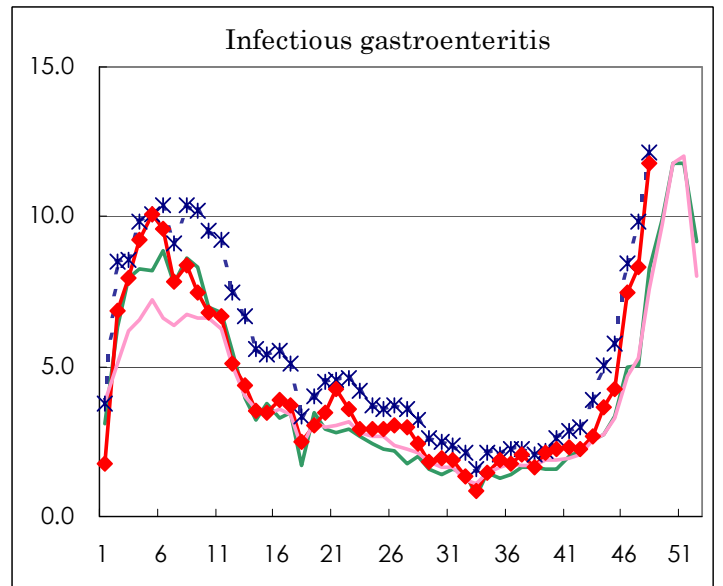
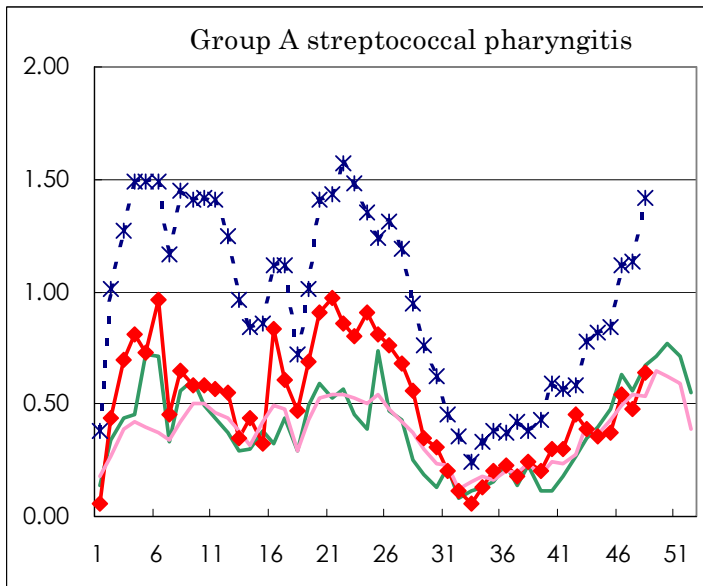
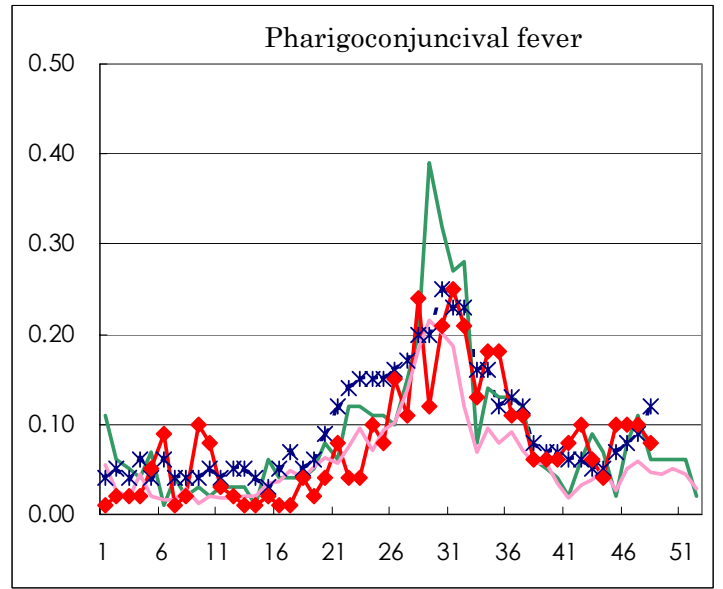
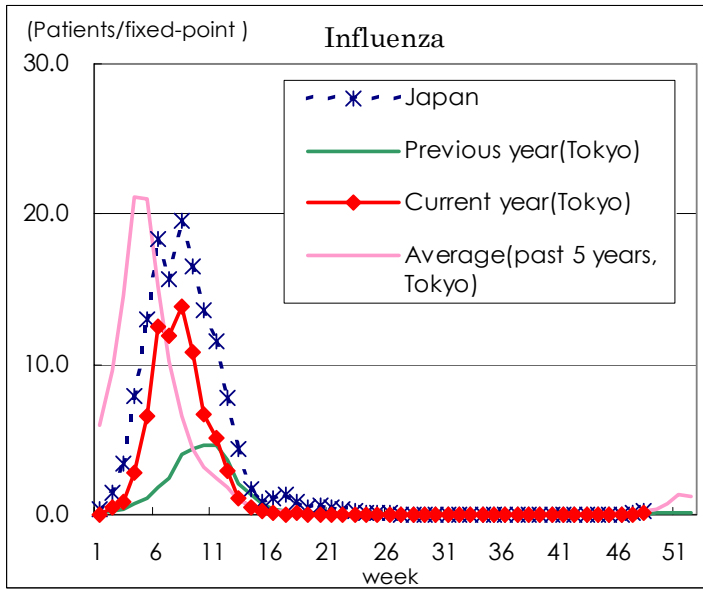
(Blank means 0.)

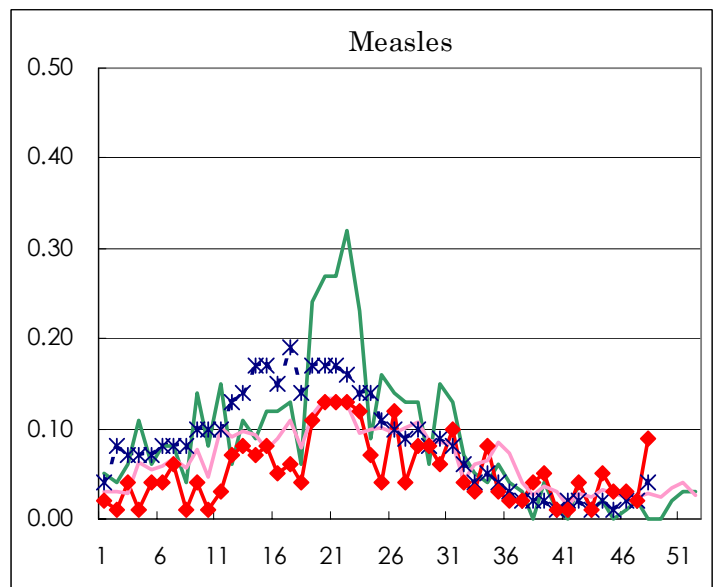
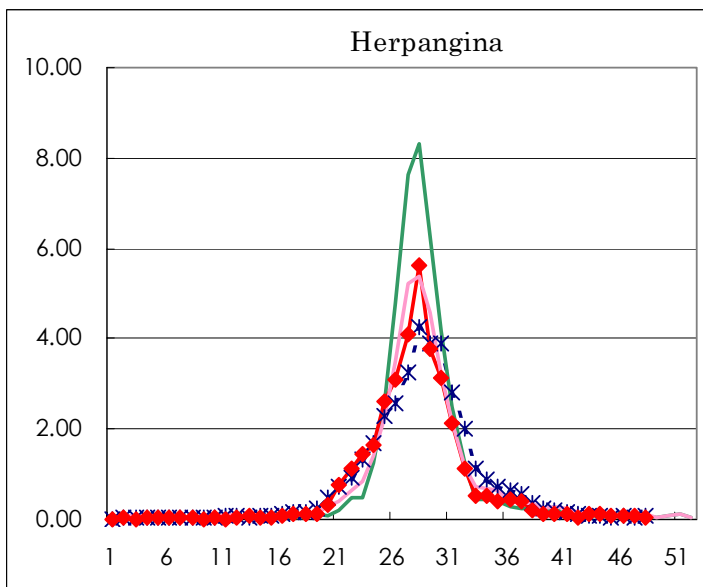
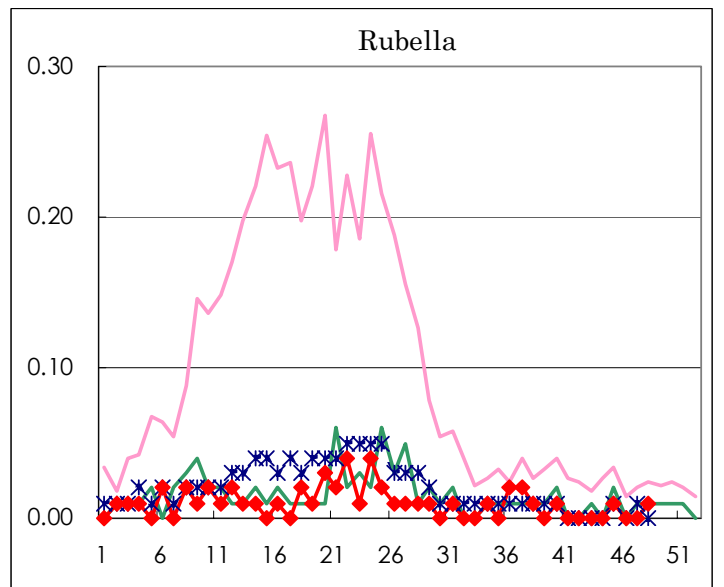
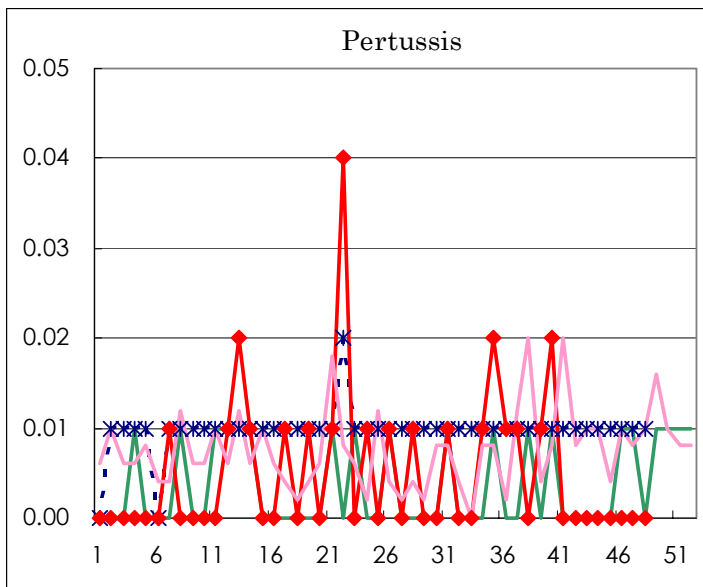
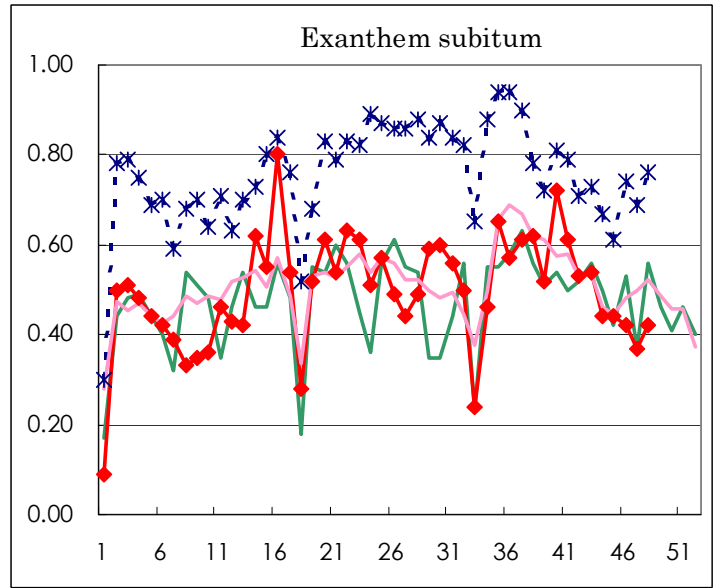
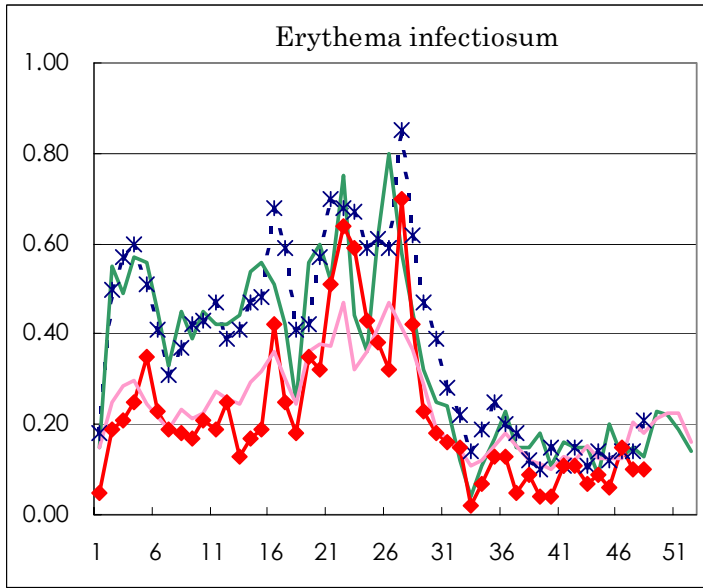
Number of patients with the diseases to be reported
by the designated clinics and hospitals

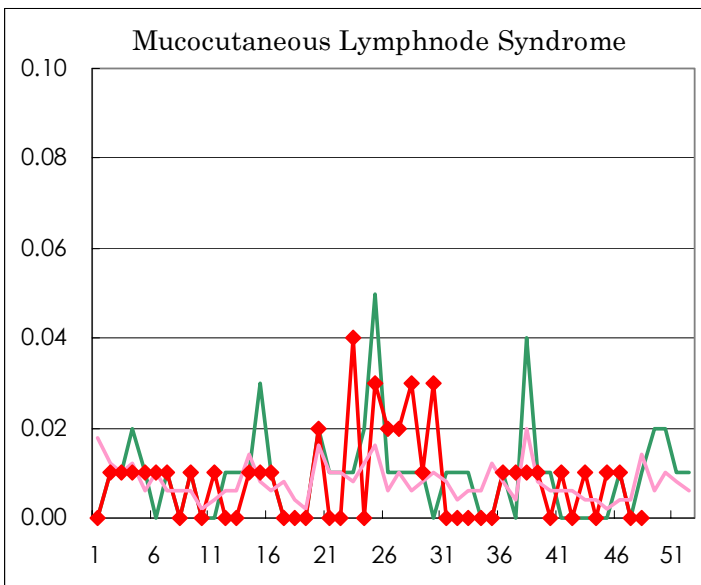
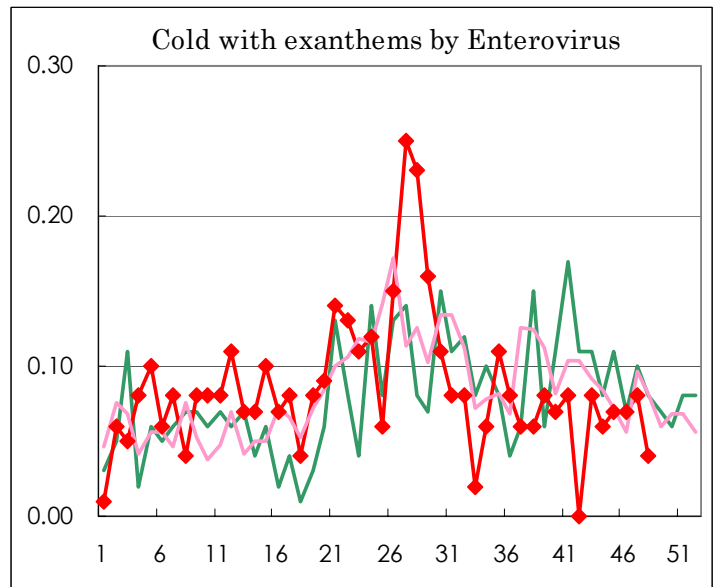
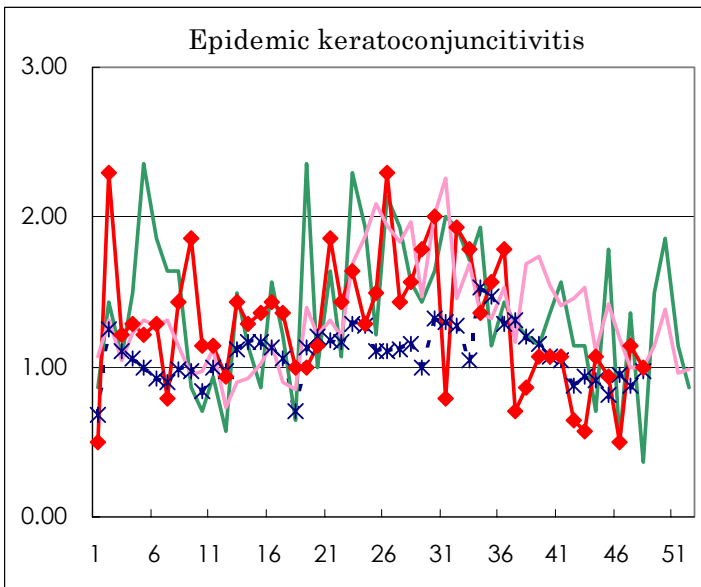
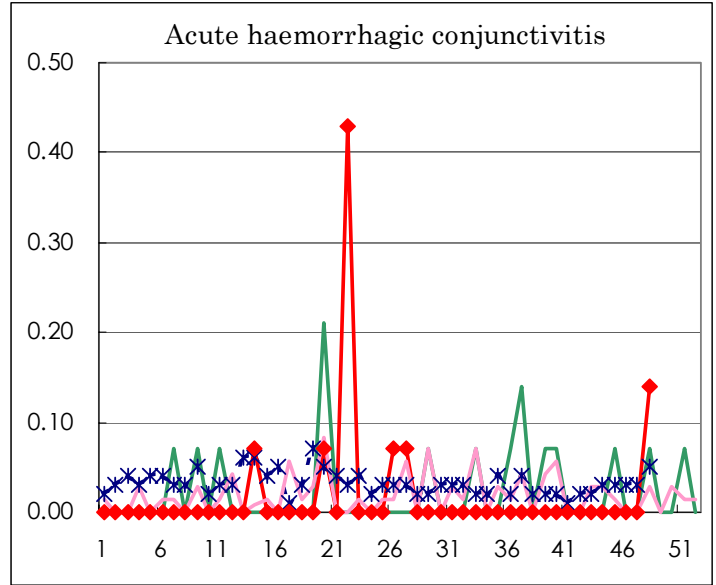
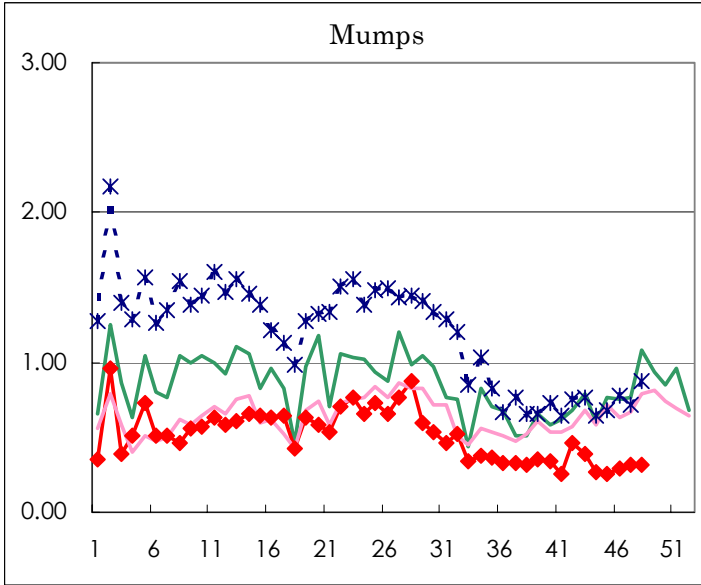
Diseases	Sex	Week(2002)				Total
		45th	46th	47th	48th	
Influenza	M	3	2	3	15	23
	F				9	9
Pharygoconjunctival fever	M	7	10	7	7	31
	F	7	4	7	5	23
Group A streptococcal pharyngitis	M	31	45	32	57	165
	F	22	31	36	34	123
Infectious gastroenteritis	M	324	522	632	857	2335
	F	278	534	553	818	2183
Chickenpox	M	69	59	77	105	310
	F	47	76	67	92	282
Hand, foot, and mouth disease	M	18	21	15	10	64
	F	18	16	12	6	52
Erythema infectiosum	M	2	9	5	5	21
	F	6	12	9	9	36
Exanthem subitum	M	37	25	28	22	112
	F	26	35	25	37	123
Pertussis	M					
	F					
Rubella	M					
	F	1			1	2
Herpangina	M	7	10	6	5	28
	F	5	3	8	4	20
Measles	M	3	2	1	7	13
	F	1	2	2	6	11
Mumps	M	20	23	23	20	86
	F	16	18	22	24	80
Cold with exanthems by Enterovirus	M	5	3	7	4	19
	F	5	7	4	1	17
Mucocutaneous Lymphnode Syndrome	M	1	2			3
	F					
Acute hemorrhagic conjunctivitis	M					
	F				2	2
Epidemic keratoconjunctivitis	M	7	5	11	8	31
	F	6	2	5	6	19
Acute encephalitis (excluding Japanese encephalitis)	M					
	F					
Bacterial meningitis	M		1		1	2
	F		1			1
Aseptic meningitis	M					
	F					
Mycoplasma pneumonia	M	3	4	4	4	15
	F	10	6	6	2	24
Chlamydial pneumonia (excluding psittacosis)	M					
	F					
Measles in adults	M	2	1			3
	F		1	1	2	4

(Blank means 0.)

Disease Trend Graph (weekly reported cases per fixed-point in comparison)







Tokyo Metropolitan Government
Infectious Disease Surveillance Center

