

INFECTIOUS DISEASES WEEKLY REPORT

# TOKYO IDWR

Tokyo Metropolitan Research Laboratory of Public Health

24 December 2002 / Number 50

- Number of patients with the diseases required notifying all the cases
- Number of patients with the diseases to be reported by the designated clinics and hospitals
- Disease trend graph (weekly reported cases per fixed-point in comparison)

## Surveillance System in Tokyo, Japan

### The diseases which all physicians must report

All physicians must report to health centers the incidence of the diseases which are shown at page one. Health centers electronically report the individual case to Tokyo Metropolitan Infectious Disease Surveillance Center.

### Fixed-point surveillance

The numbers of patients who visit designated clinics or hospitals during a week are reported to health centers ( There are 37 in Tokyo). And they electronically report the numbers to Tokyo Metropolitan Infectious Disease Surveillance Center. We have about 200 fixed points (clinics and hospitals) in Tokyo.

1<sup>st</sup> Week is early January and 52<sup>nd</sup> Week is end of December.

Tokyo Metropolitan Infectious Disease Surveillance Center  
Tokyo Metropolitan Research Laboratory of Public Health

TEL:81-3-3363-3213 FAX:81-3-5332-7365

e-mail: [idsc@tokyo-eiken.go.jp](mailto:idsc@tokyo-eiken.go.jp)

URL: [www.tokyo-eiken.go.jp](http://www.tokyo-eiken.go.jp)

## Number of patients with the diseases which all physicians must report

Category	Diseases	Tokyo					Japan	
		47th	48th	49th	50th	Total	50th	Total
I	Ebola hemorrhagic fever							
	Crimean-Congo hemorrhagic fever							
	Plague							
	Marburg disease							
	Lassa fever							
II	Cholera					14		51
	Shigellosis	2	1	3	4	108	20	681
	Typhoid fever					22	1	62
	Paratyphoid fever					11	1	32
	Acute poliomyelitis							
	Diphtheria							
III	Enterohemorrhagic <i>Escherichia coli</i> infection		1	3		181	10	3104
IV	Amebiasis	1	1	2	3	119	6	429
	Echinococcosis							9
	Yellow fever							
	Psittacosis					5		55
	Relapsing fever							
	Acute viral hepatitis		3	1		157	5	885
	Q fever	1		5		36		46
	Rabies							
	Cryptosporidiosis					4		107
	Creutzfeldt-Jakob Disease	1	1		2	12	1	137
	Sever invasive streptococcal infections	2	1			12	1	87
	Acquired immunodeficiency syndrome	9	8	7	3	363	9	859
	Coccidioidomycosis							3
	Giardiasis		1	1		46	3	111
	Hemorrhagic fever with renal syndrome							
	Meningococcal meningitis					1		8
	Congenital rubella syndrome							
	Anthrax							
	Scrub typhus (Tsutsugamushi disease)					6	9	300
	Dengue fever	1		1	1	17		50
	Japanese spotted fever							36
	Japanese encephalitis							8
	Infant botulism							
	Syphilis		2	1	1	57	3	541
	Tetanus					6	1	101
	Vancomycin-resistant <i>enterococcus</i> infection			1		8		40
	Hantavirus pulmonary syndrome							
	Helpes B virus infection							
	Brucellosis					1		1
	Epidemic typhus							
	Malaria					28		76
Lyme disease					2		15	
Legionellosis					19	2	163	
West Nile fever								

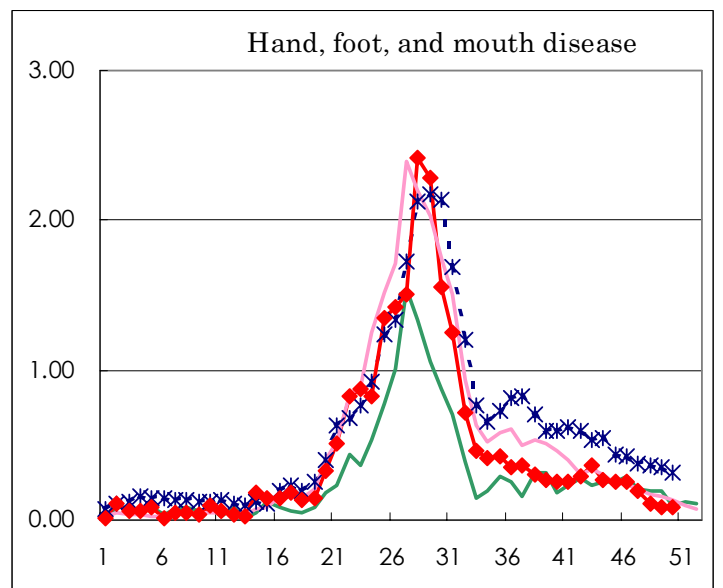
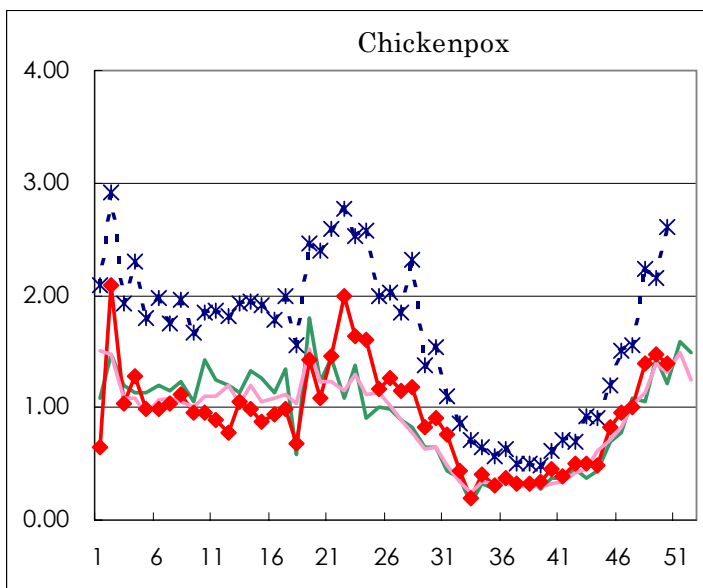
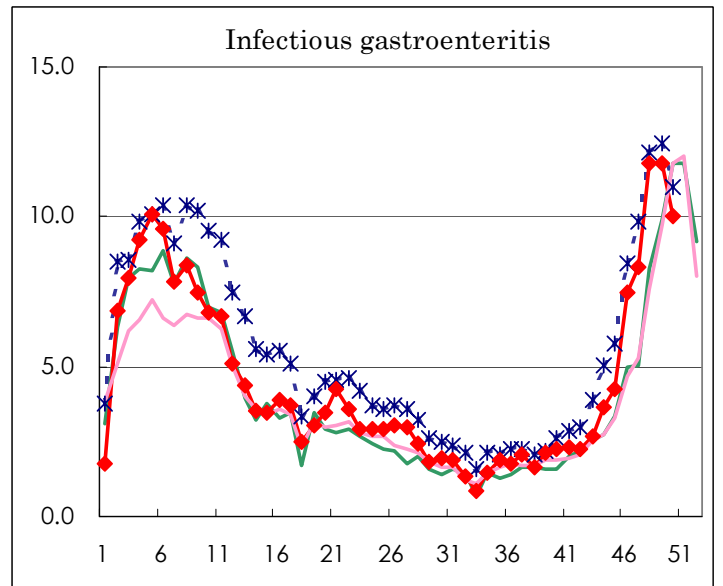
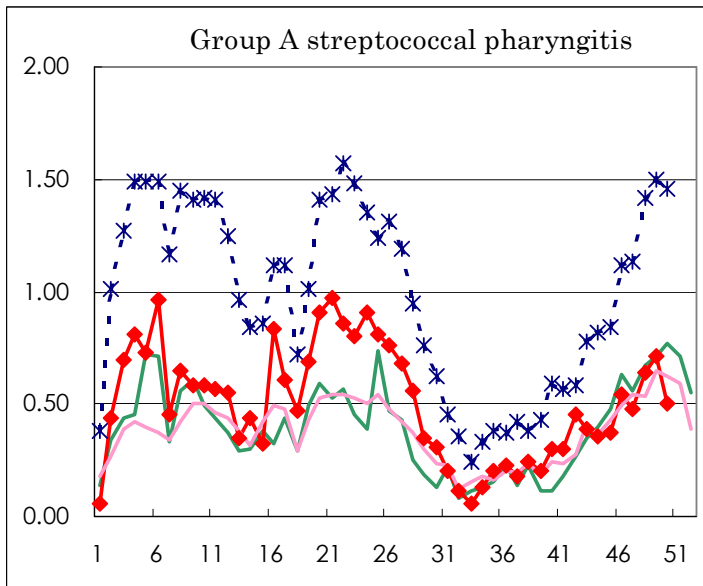
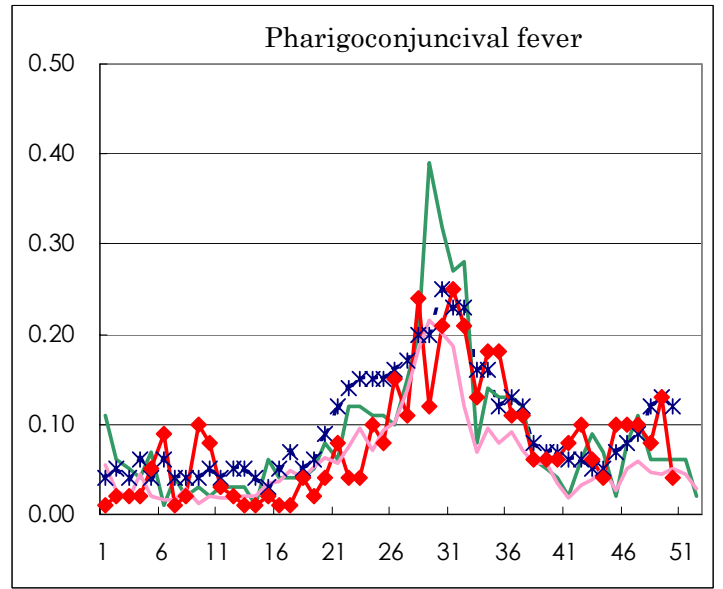
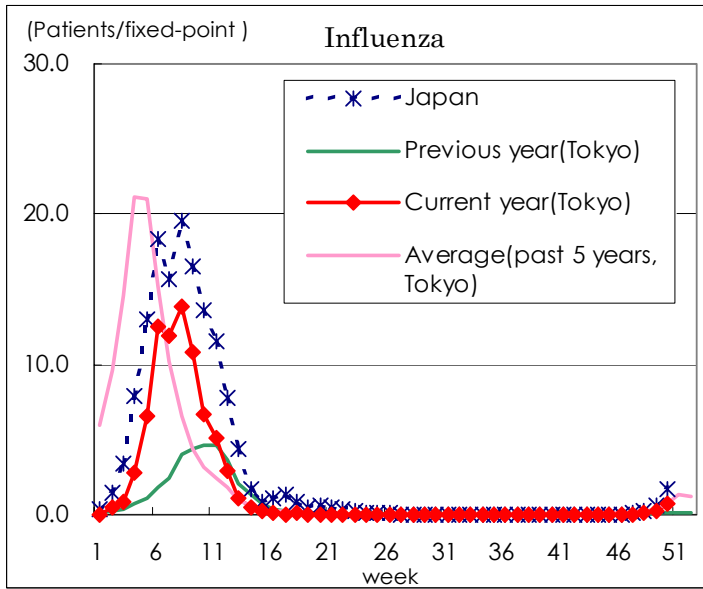
( Blank means 0. )

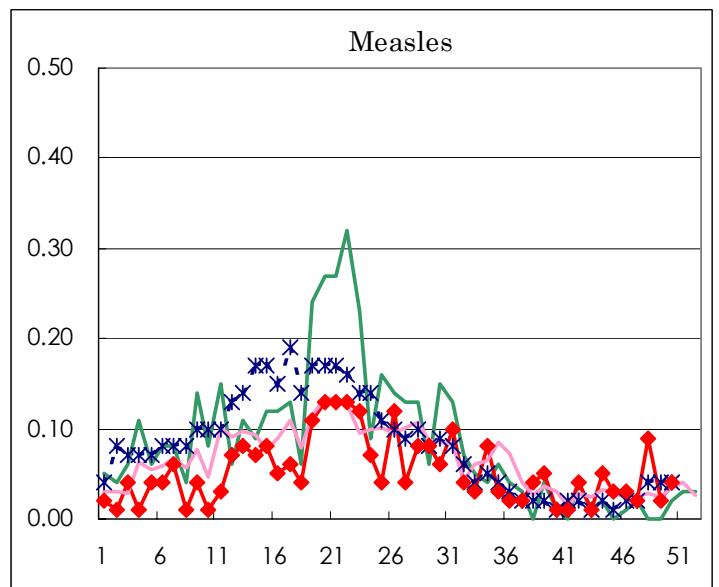
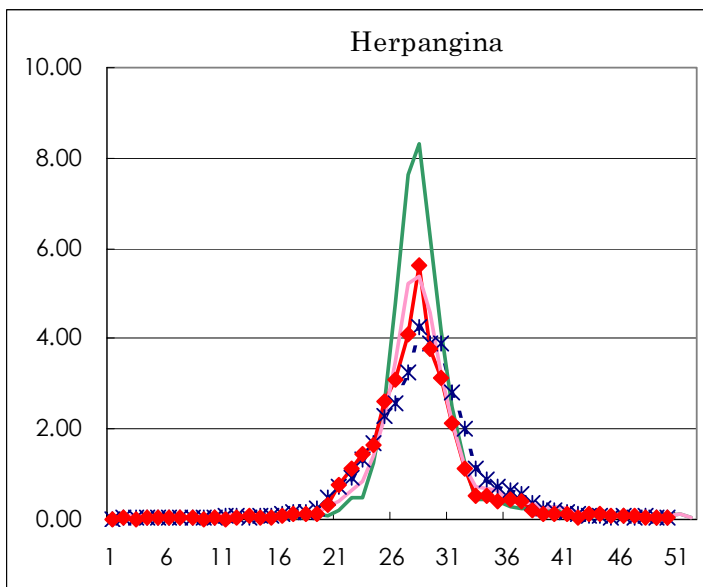
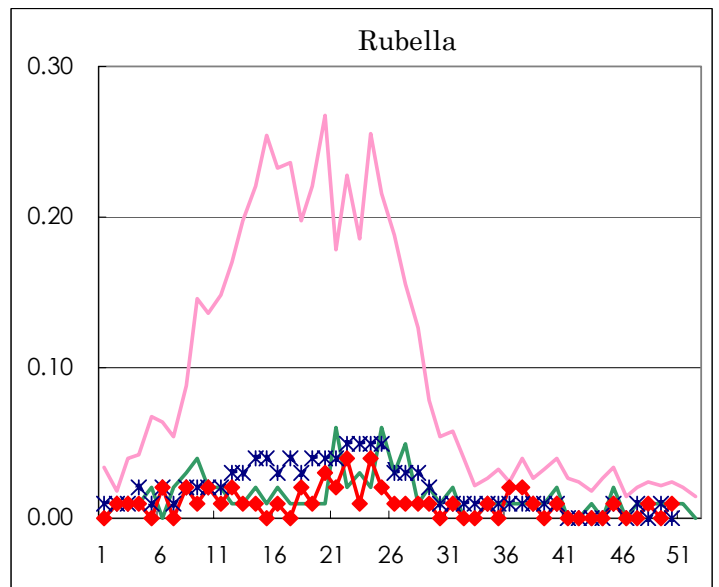
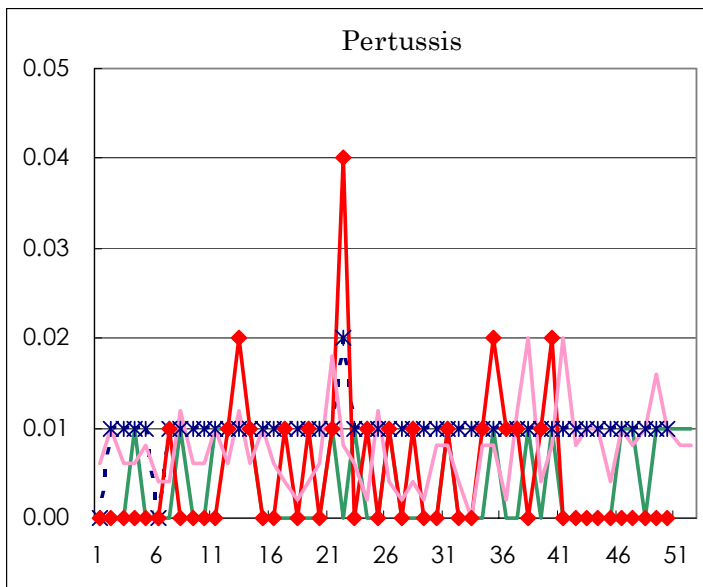
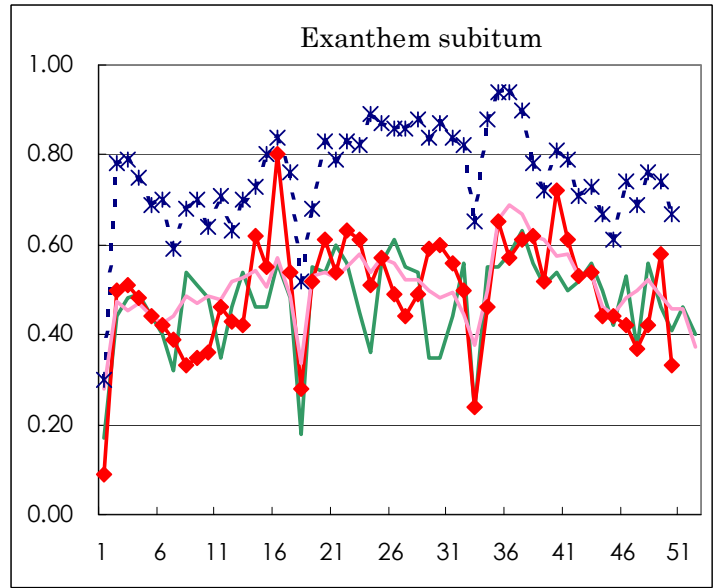
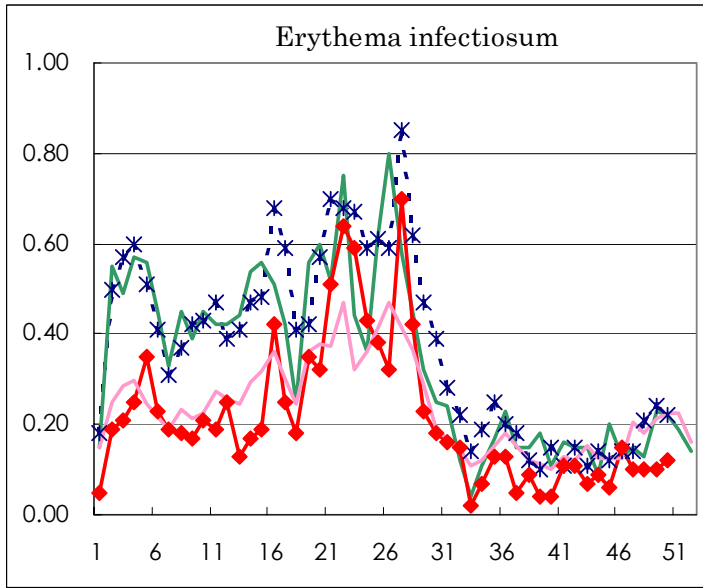
Number of patients with the diseases to be reported  
by the designated clinics and hospitals

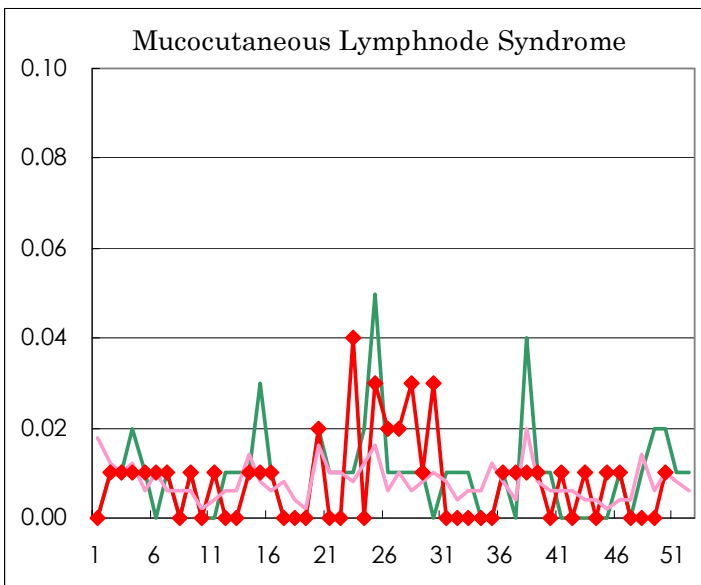
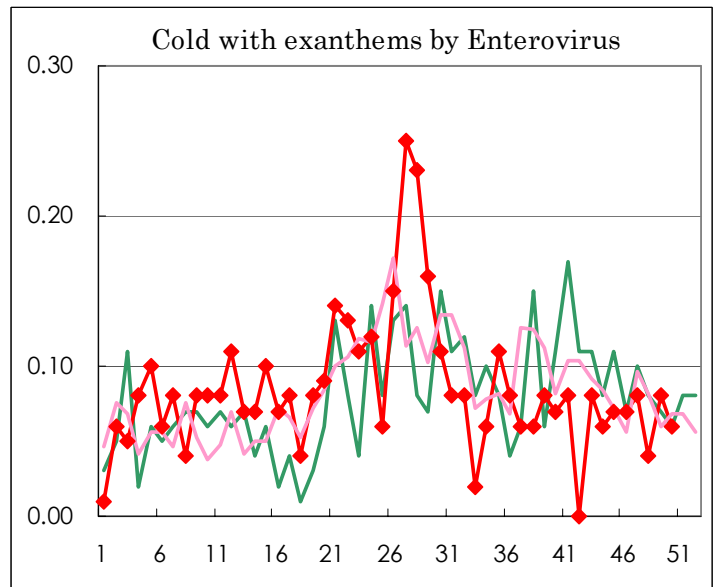
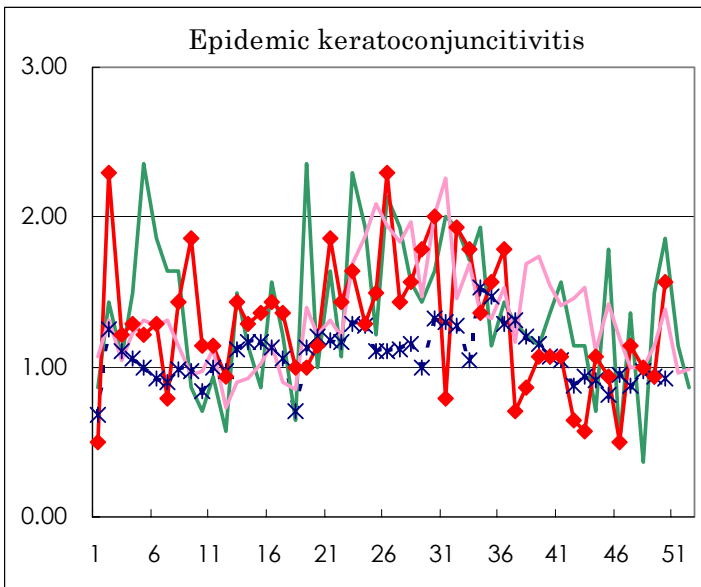
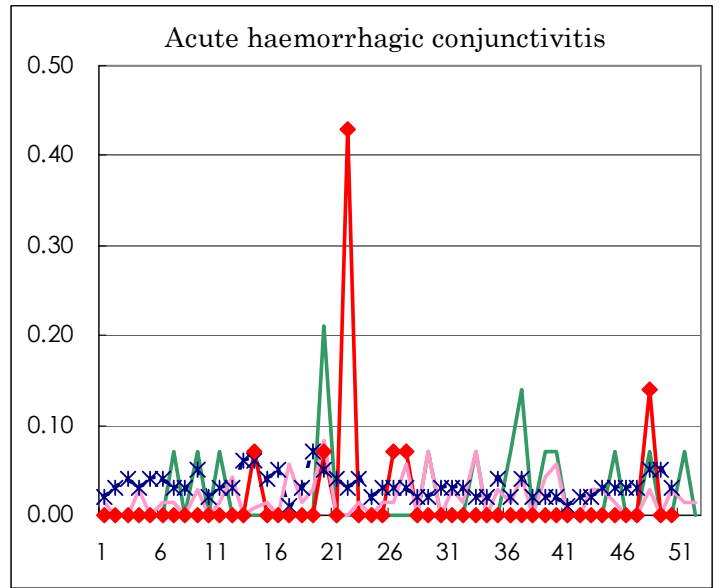
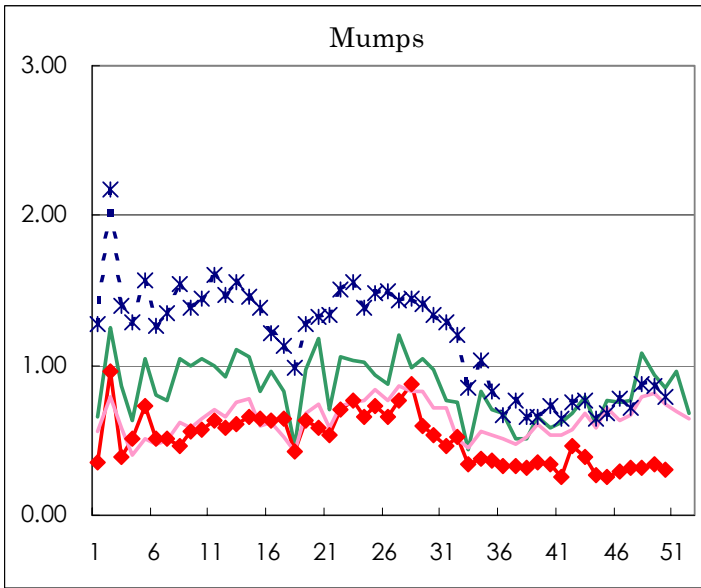
Diseases	Sex	Week(2002)				Total
		47th	48th	49th	50th	
Influenza	M	3	15	29	59	106
	F		9	23	60	92
Pharygoconjunctival fever	M	7	7	7	5	26
	F	7	5	12	1	25
Group A streptococcal pharyngitis	M	32	57	58	43	190
	F	36	34	43	28	141
Infectious gastroenteritis	M	632	857	855	697	3041
	F	553	818	820	721	2912
Chickenpox	M	77	105	114	101	397
	F	67	92	96	98	353
Hand, foot, and mouth disease	M	15	10	5	5	35
	F	12	6	7	7	32
Erythema infectiosum	M	5	5	8	6	24
	F	9	9	6	11	35
Exanthem subitum	M	28	22	42	27	119
	F	25	37	41	20	123
Pertussis	M					
	F					
Rubella	M				1	1
	F		1			1
Herpangina	M	6	5	4	6	21
	F	8	4	4	3	19
Measles	M	1	7	2	5	15
	F	2	6	1	1	10
Mumps	M	23	20	32	23	98
	F	22	24	16	19	81
Cold with exanthems by Enterovirus	M	7	4	6	5	22
	F	4	1	6	4	15
Mucocutaneous Lymphnode Syndrome	M				2	2
	F					
Acute hemorrhagic conjunctivitis	M					
	F		2			2
Epidemic keratoconjunctivitis	M	11	8	8	8	35
	F	5	6	5	14	30
Acute encephalitis (excluding Japanese encephalitis)	M					
	F					
Bacterial meningitis	M		1	1	1	3
	F					
Aseptic meningitis	M					
	F			1	1	2
Mycoplasma pneumonia	M	4	4	2	4	14
	F	6	2	3	5	16
Chlamydial pneumonia (excluding psittacosis)	M					
	F					
Measles in adults	M			1		1
	F	1	2			3

( Blank means 0. )

# Disease Trend Graph (weekly reported cases per fixed-point in comparison)







Tokyo Metropolitan Government  
 Infectious Disease Surveillance Center

