

INFECTIOUS DISEASES WEEKLY REPORT

TOKYO IDWR

Tokyo Metropolitan Research Laboratory of Public Health

27 December 2002 / Number 51

- Number of patients with the diseases required notifying all the cases
- Number of patients with the diseases to be reported by the designated clinics and hospitals
- Disease trend graph (weekly reported cases per fixed-point in comparison)

Surveillance System in Tokyo, Japan

The diseases which all physicians must report

All physicians must report to health centers the incidence of the diseases which are shown at page one. Health centers electronically report the individual case to Tokyo Metropolitan Infectious Disease Surveillance Center.

Fixed-point surveillance

The numbers of patients who visit designated clinics or hospitals during a week are reported to health centers (There are 37 in Tokyo). And they electronically report the numbers to Tokyo Metropolitan Infectious Disease Surveillance Center. We have about 200 fixed points (clinics and hospitals) in Tokyo.

1st Week is early January and 52nd Week is end of December.

Tokyo Metropolitan Infectious Disease Surveillance Center
Tokyo Metropolitan Research Laboratory of Public Health

TEL:81-3-3363-3213 FAX:81-3-5332-7365
e-mail:ids@tokyo-eiken.go.jp
URL:www.tokyo-eiken.go.jp

Number of patients with the diseases which all physicians must report

Category	Diseases	Tokyo					Japan	
		48th	49th	50th	51st	Total	51st	Total
I	Ebola hemorrhagic fever							
	Crimean-Congo hemorrhagic fever							
	Plague							
	Marburg disease							
	Lassa fever							
II	Cholera					14		51
	Shigellosis	1	3	4	3	111	7	688
	Typhoid fever					22		62
	Paratyphoid fever					11	1	33
	Acute poliomyelitis							
	Diphtheria							
III	Enterohemorrhagic <i>Escherichia coli</i> infection	1	3		2	183	16	3121
IV	Amebiasis	1	2	3	3	122	4	439
	Echinococcosis							9
	Yellow fever							
	Psittacosis					5		55
	Relapsing fever							
	Acute viral hepatitis	3	1		2	159	6	906
	Q fever		5			36		46
	Rabies							
	Cryptosporidiosis					4	1	108
	Creutzfeldt-Jakob Disease	1		2		12	3	140
	Sever invasive streptococcal infections	1			1	13	1	89
	Acquired immunodeficiency syndrome	8	7	3	5	368	13	881
	Coccidioidomycosis							3
	Giardiasis	1	1			46	2	114
	Hemorrhagic fever with renal syndrome							
	Meningococcal meningitis					1		8
	Congenital rubella syndrome							1
	Anthrax							
	Scrub typhus (Tsutsugamushi disease)					6	9	315
	Dengue fever		1	1		17		50
	Japanese spotted fever							36
	Japanese encephalitis							8
	Infant botulism							
	Syphilis	2	1	1	2	59	6	555
	Tetanus					6	2	104
	Vancomycin-resistant <i>enterococcus</i> infection		1			8		42
	Hantavirus pulmonary syndrome							
	Helpes B virus infection							
	Brucellosis					1		1
	Epidemic typhus							
	Malaria					28		76
	Lyme disease					2		15
Legionellosis					19		164	
West Nile fever								

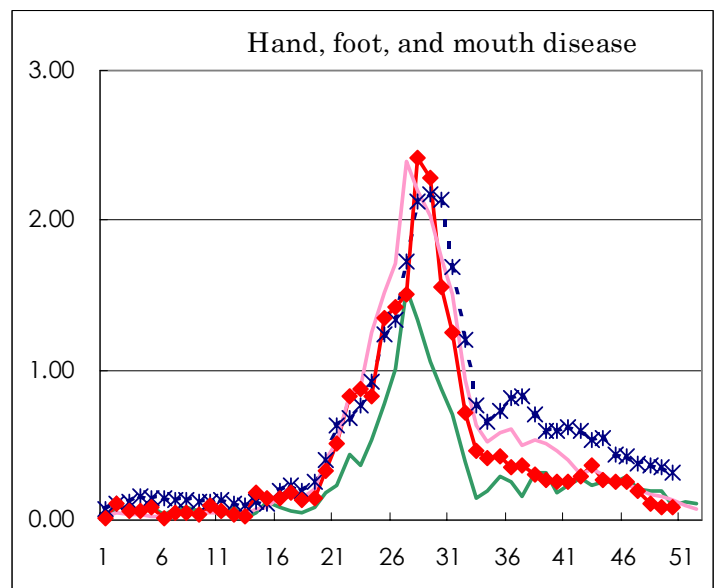
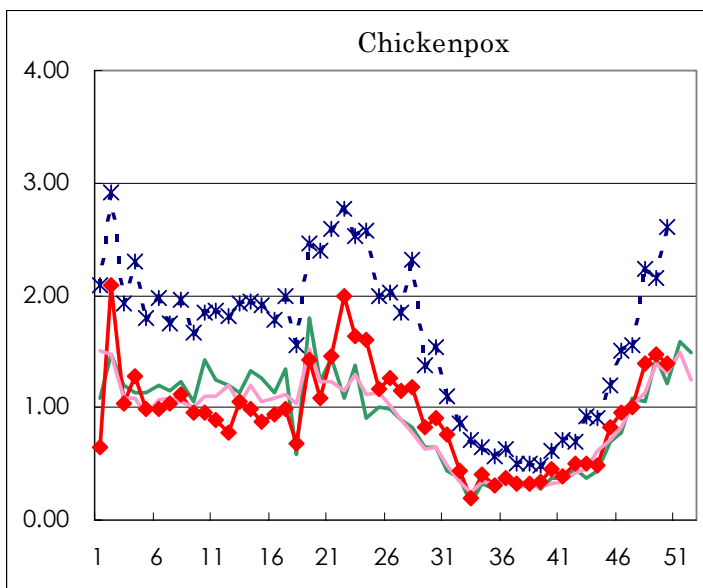
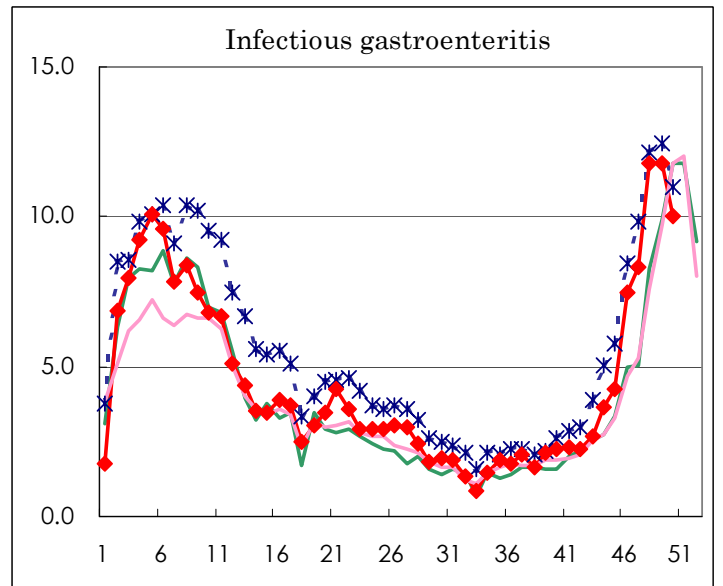
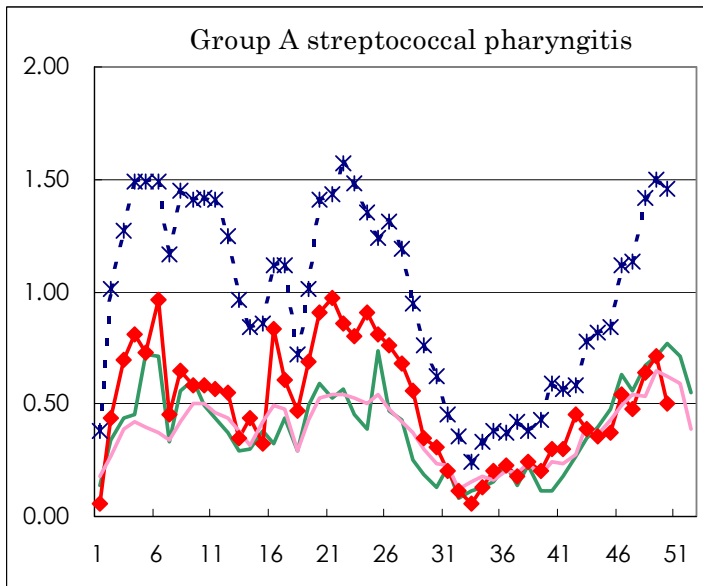
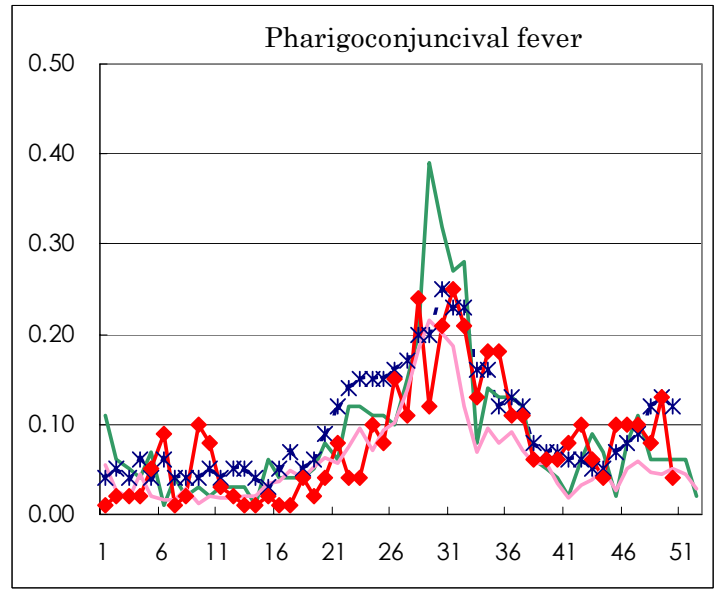
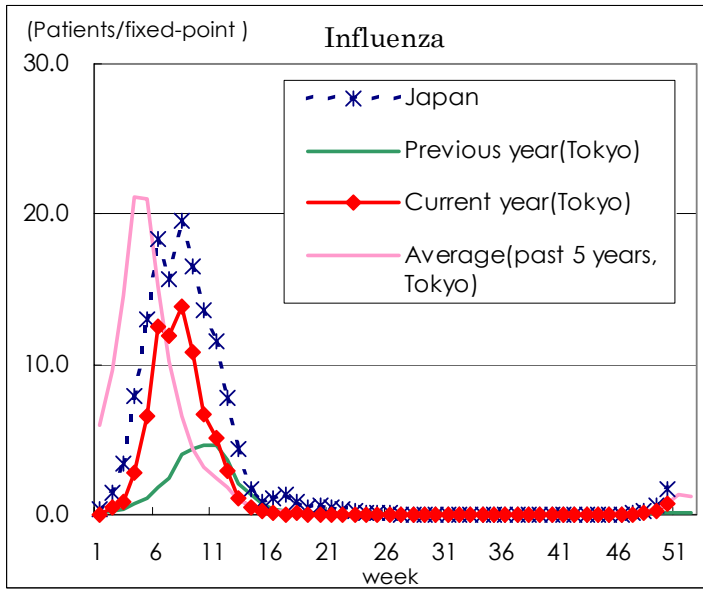
(Blank means 0.)

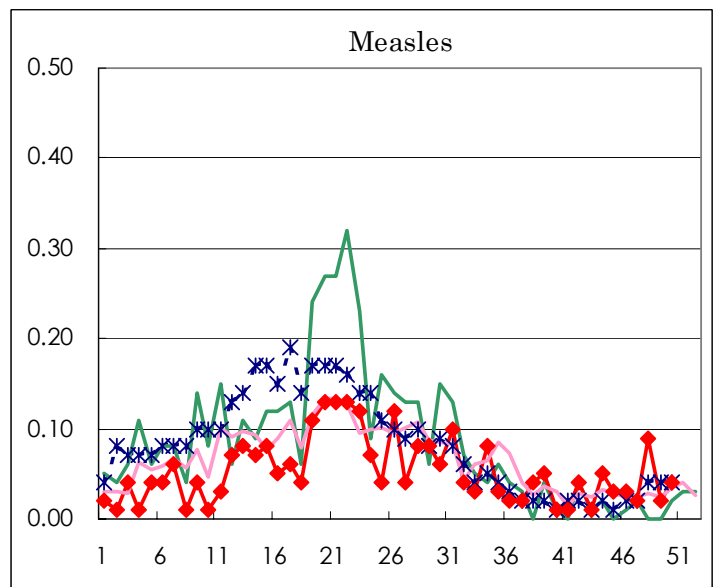
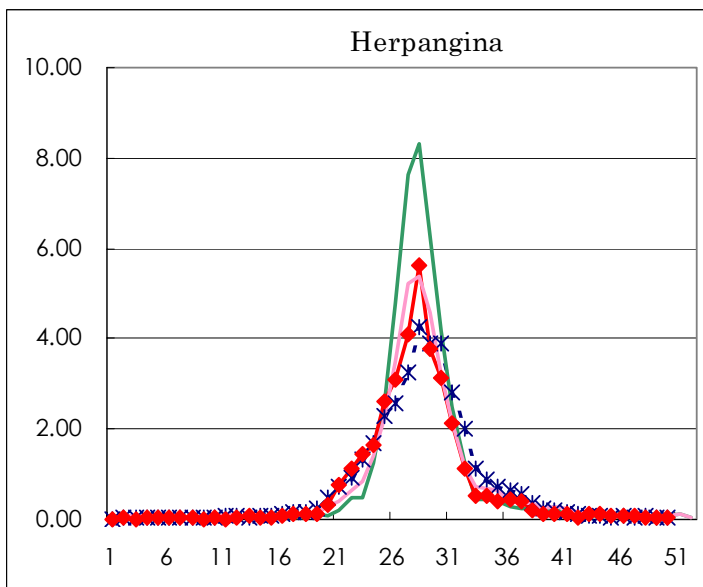
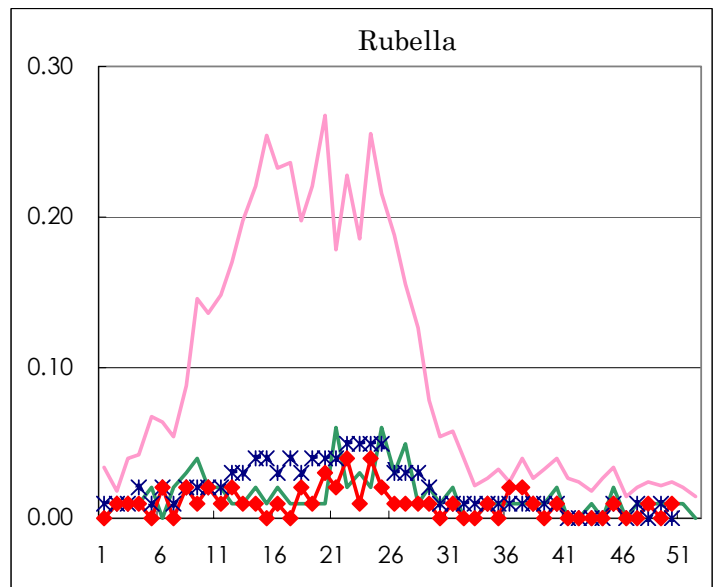
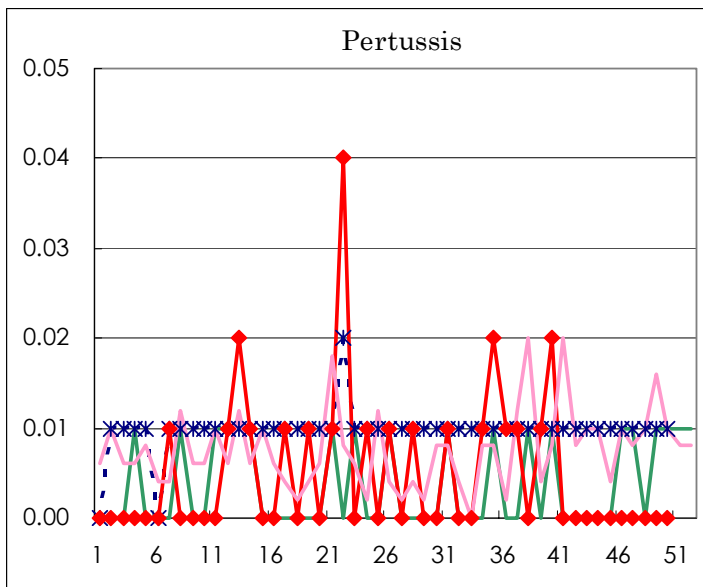
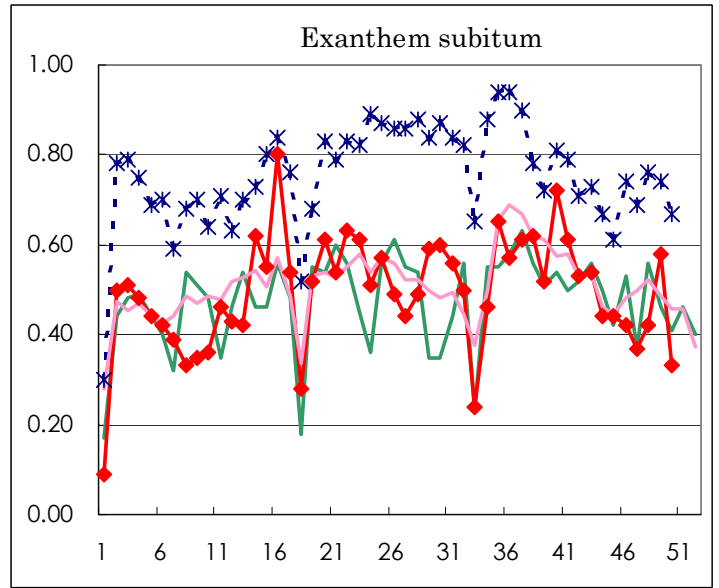
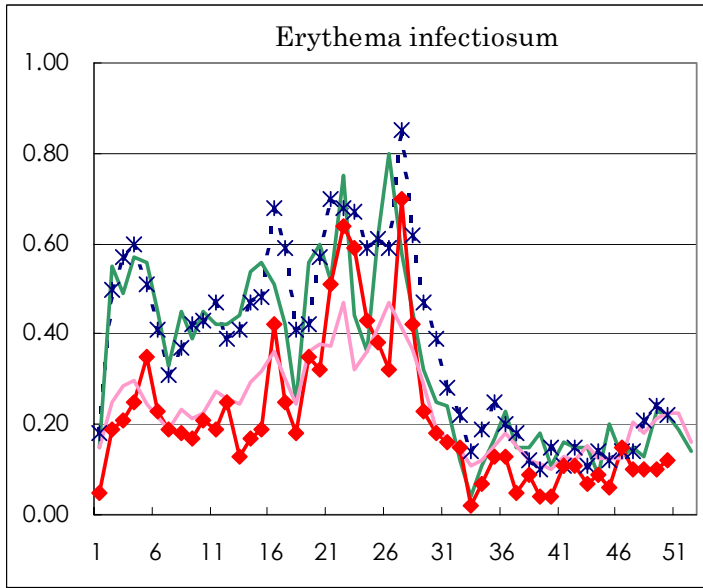
Number of patients with the diseases to be reported
by the designated clinics and hospitals

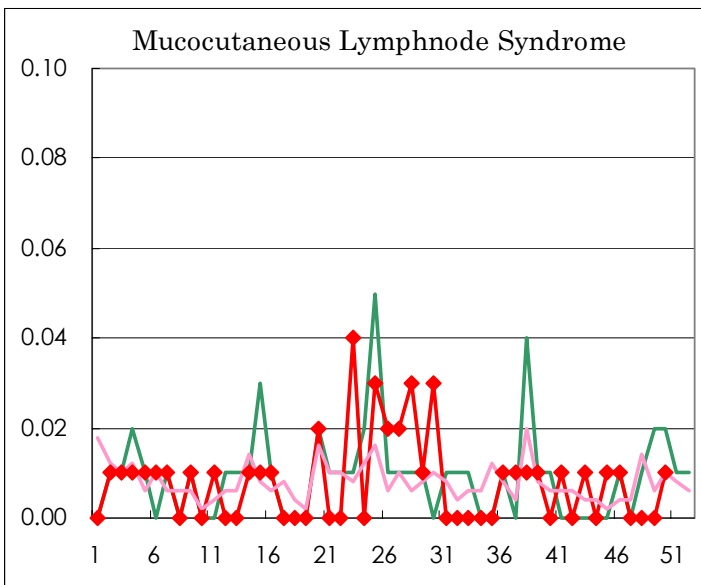
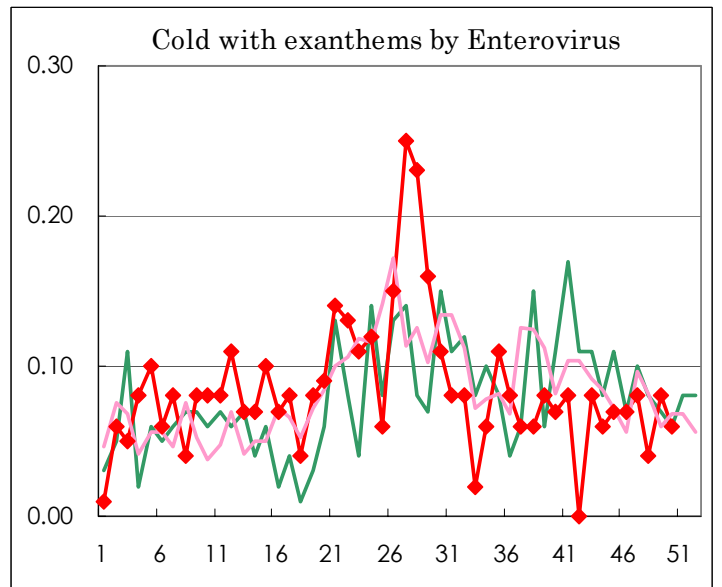
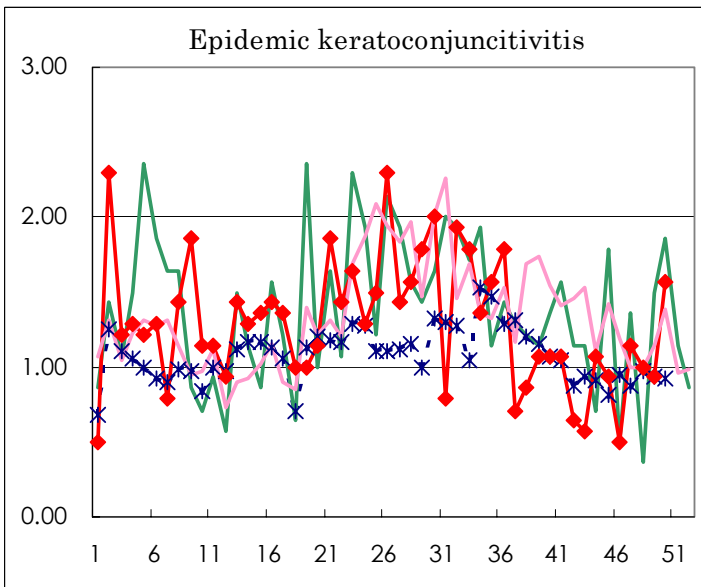
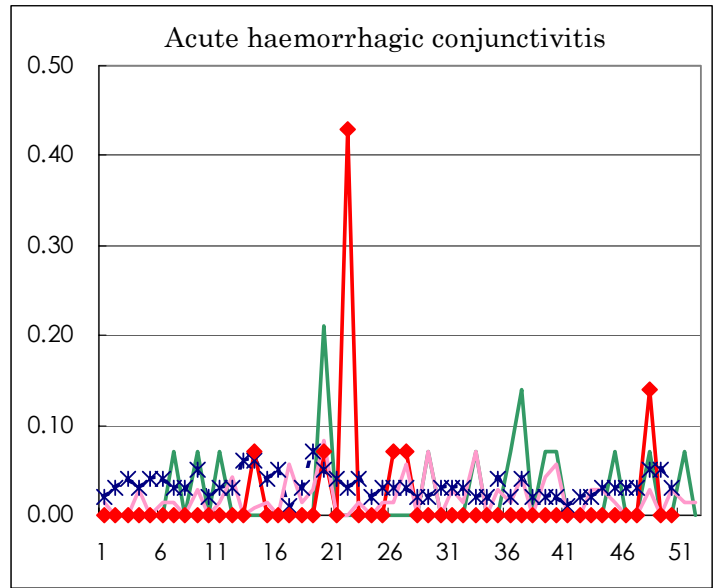
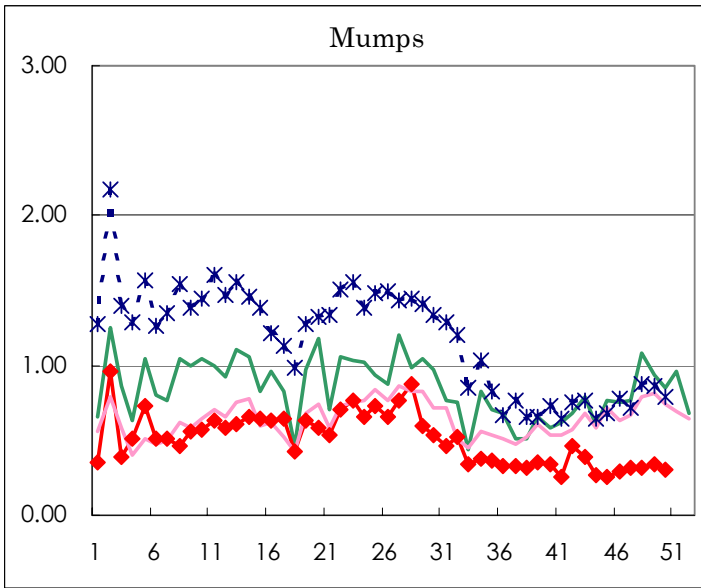
Diseases	Sex	Week(2002)				Total
		48th	49th	50th	51st	
Influenza	M	15	29	59	167	270
	F	9	23	60	164	256
Pharygoconjunctival fever	M	7	7	5	6	25
	F	5	12	1	12	30
Group A streptococcal pharyngitis	M	57	58	43	61	219
	F	34	43	28	55	160
Infectious gastroenteritis	M	857	855	697	714	3123
	F	818	820	721	771	3130
Chickenpox	M	105	114	101	117	437
	F	92	96	98	111	397
Hand, foot, and mouth disease	M	10	5	5	6	26
	F	6	7	7	3	23
Erythema infectiosum	M	5	8	6	15	34
	F	9	6	11	9	35
Exanthem subitum	M	22	42	27	33	124
	F	37	41	20	35	133
Pertussis	M					
	F					
Rubella	M			1		1
	F	1				1
Herpangina	M	5	4	6	3	18
	F	4	4	3	2	13
Measles	M	7	2	5	3	17
	F	6	1	1	1	9
Mumps	M	20	32	23	27	102
	F	24	16	19	23	82
Cold with exanthems by Enterovirus	M	4	6	5	1	16
	F	1	6	4		11
Mucocutaneous Lymphnode Syndrome	M			2	3	5
	F					
Acute hemorrhagic conjunctivitis	M					
	F	2				2
Epidemic keratoconjunctivitis	M	8	8	8	5	29
	F	6	5	14	7	32
Acute encephalitis (excluding Japanese encephalitis)	M					
	F					
Bacterial meningitis	M	1	1	1		3
	F					
Aseptic meningitis	M				1	1
	F		1	1		2
Mycoplasma pneumonia	M	4	2	4	2	12
	F	2	3	5		10
Chlamydial pneumonia (excluding psittacosis)	M					
	F					
Measles in adults	M		1		1	2
	F	2			1	3

(Blank means 0.)

Disease Trend Graph (weekly reported cases per fixed-point in comparison)







Tokyo Metropolitan Government
 Infectious Disease Surveillance Center

