

INFECTIOUS DISEASES WEEKLY REPORT

# TOKYO IDWR

Tokyo Metropolitan Research Laboratory of Public Health

14 January 2003 / Number 52

- Number of patients with the diseases required notifying all the cases
- Number of patients with the diseases to be reported by the designated clinics and hospitals
- Disease trend graph (weekly reported cases per fixed-point in comparison)

## Surveillance System in Tokyo, Japan

### The diseases which all physicians must report

All physicians must report to health centers the incidence of the diseases which are shown at page one. Health centers electronically report the individual case to Tokyo Metropolitan Infectious Disease Surveillance Center.

### Fixed-point surveillance

The numbers of patients who visit designated clinics or hospitals during a week are reported to health centers ( There are 37 in Tokyo). And they electronically report the numbers to Tokyo Metropolitan Infectious Disease Surveillance Center. We have about 200 fixed points (clinics and hospitals) in Tokyo.

1<sup>st</sup> Week is early January and 52<sup>nd</sup> Week is end of December.

Tokyo Metropolitan Infectious Disease Surveillance Center  
Tokyo Metropolitan Research Laboratory of Public Health

TEL:81-3-3363-3213 FAX:81-3-5332-7365

e-mail: [idsc@tokyo-eiken.go.jp](mailto:idsc@tokyo-eiken.go.jp)

URL: [www.tokyo-eiken.go.jp](http://www.tokyo-eiken.go.jp)

## Number of patients with the diseases which all physicians must report

Category	Diseases	Tokyo					Japan	
		49th	50th	51st	52nd	Total	52nd	Total
I	Ebola hemorrhagic fever							
	Crimean-Congo hemorrhagic fever							
	Plague							
	Marburg disease							
	Lassa fever							
II	Cholera					14		51
	Shigellosis	3	4	3	1	112	5	693
	Typhoid fever					22		62
	Paratyphoid fever					11		33
	Acute poliomyelitis							
	Diphtheria							
III	Enterohemorrhagic <i>Escherichia coli</i> infection	3		2		183	10	3132
IV	Amebiasis	2	3	3	4	126	7	453
	Echinococcosis							9
	Yellow fever							
	Psittacosis					5		55
	Relapsing fever							
	Acute viral hepatitis	1		2	1	160	3	915
	Q fever	5				36		46
	Rabies							
	Cryptosporidiosis					4		108
	Creutzfeldt-Jakob Disease		2		1	13	2	146
	Sever invasive streptococcal infections			1		13		90
	Acquired immunodeficiency syndrome	7	3	5		368	4	888
	Coccidioidomycosis							3
	Giardiasis	1				46	1	115
	Hemorrhagic fever with renal syndrome							
	Meningococcal meningitis					1		8
	Congenital rubella syndrome							1
	Anthrax							
	Scrub typhus (Tsutsugamushi disease)					6	5	329
	Dengue fever	1	1			17		50
	Japanese spotted fever							36
	Japanese encephalitis							8
	Infant botulism							
	Syphilis	1	1	2	2	61	1	561
	Tetanus					6	1	105
	Vancomycin-resistant <i>enterococcus</i> infection	1			1	9		43
	Hantavirus pulmonary syndrome							
	Helpes B virus infection							
	Brucellosis					1		1
	Epidemic typhus							
Malaria				1	29	1	78	
Lyme disease					2		15	
Legionellosis					19		166	
West Nile fever								

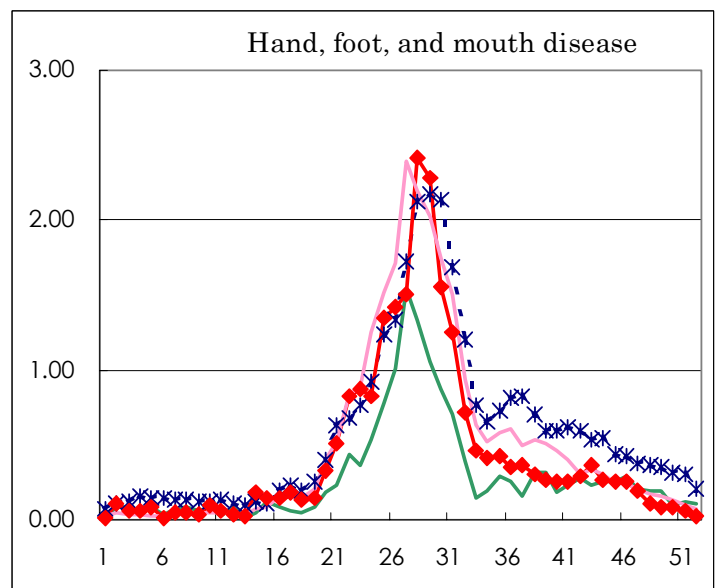
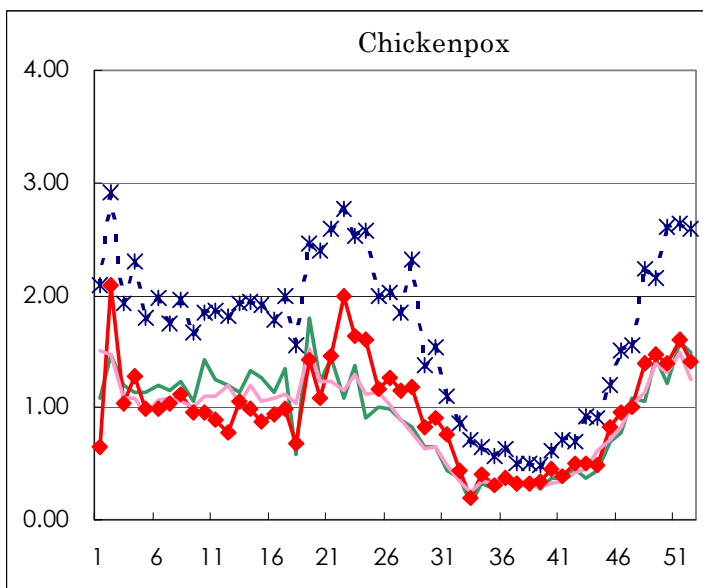
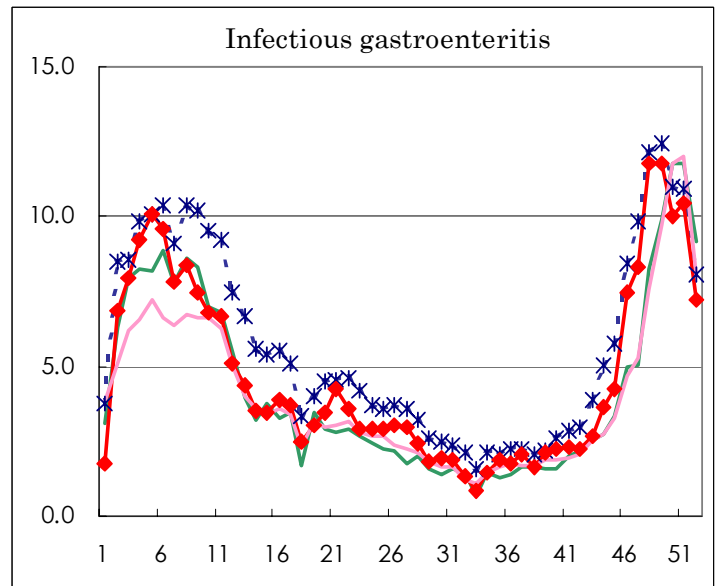
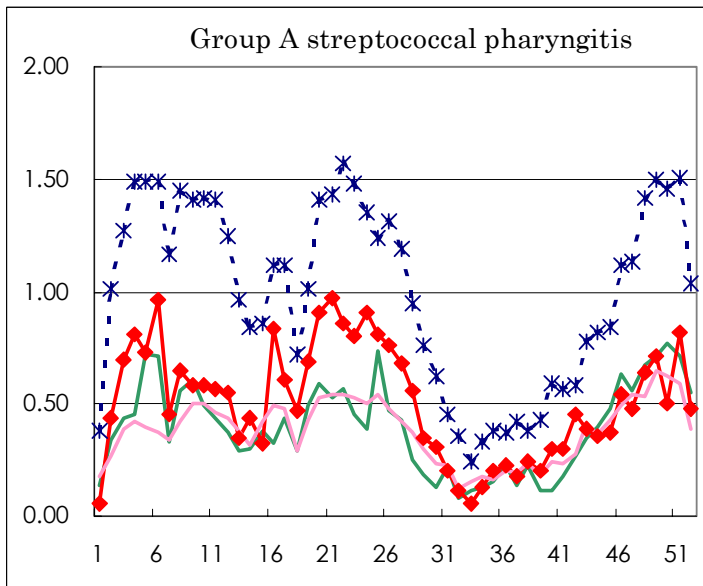
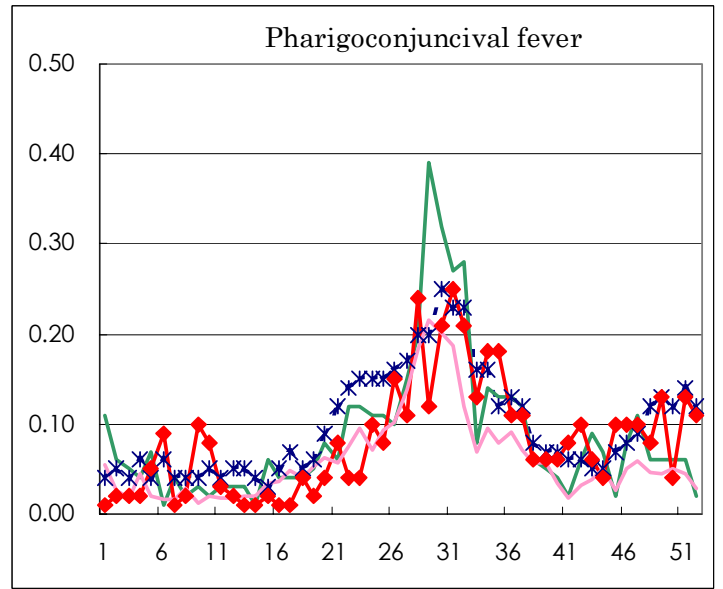
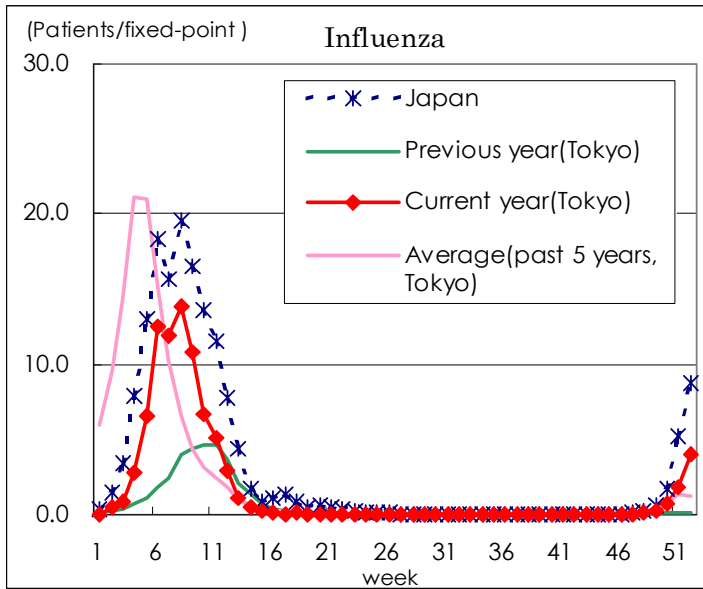
( Blank means 0. )

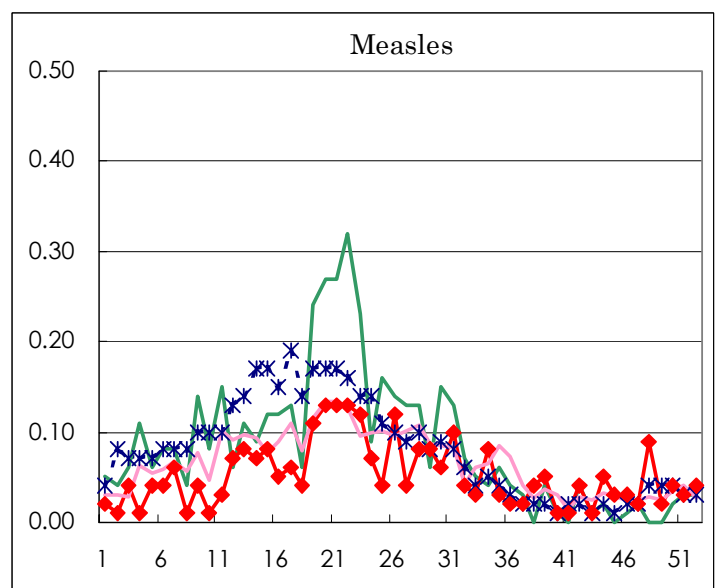
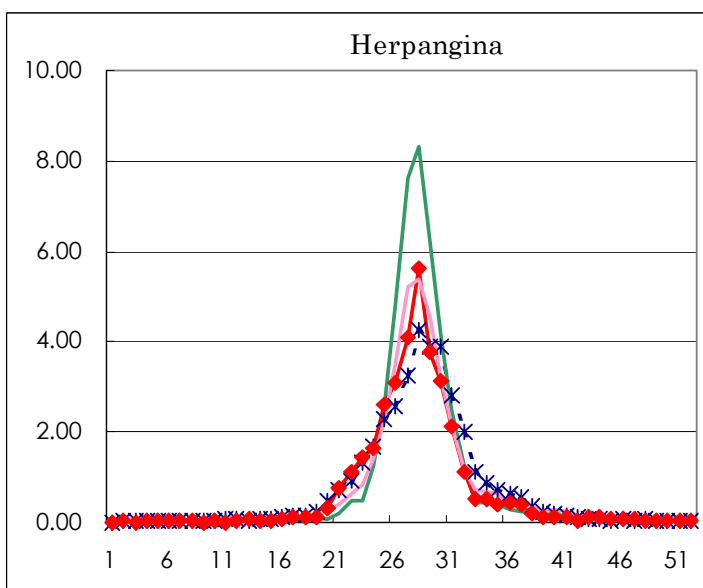
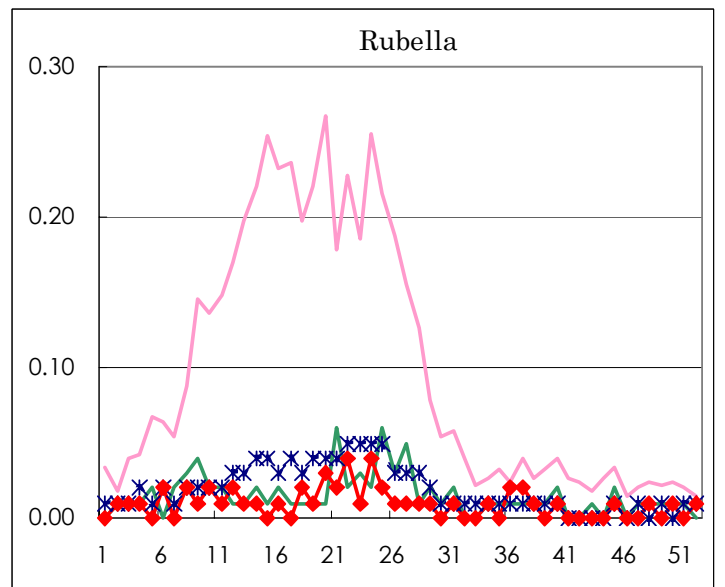
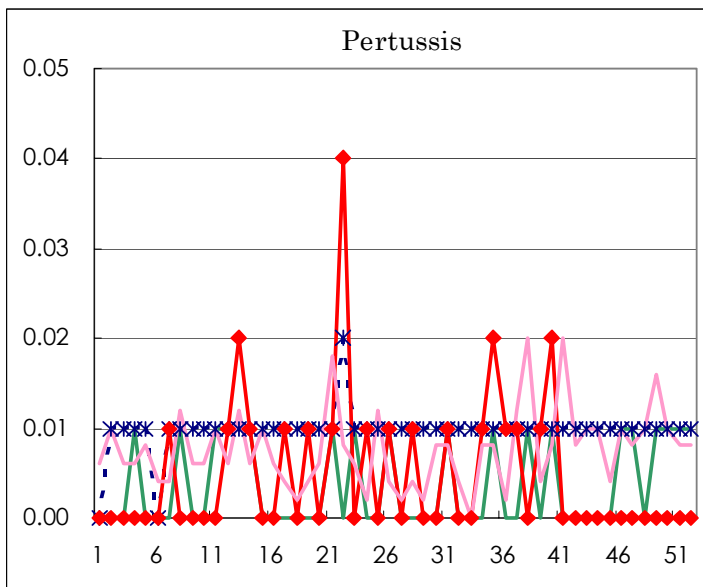
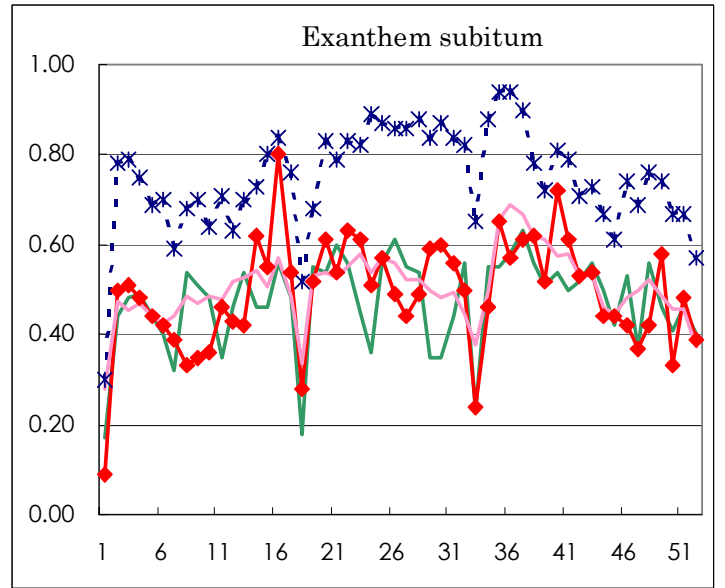
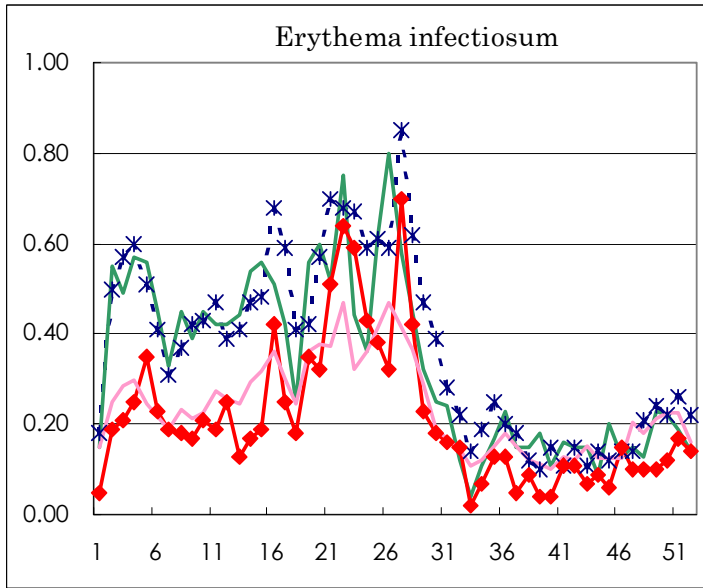
Number of patients with the diseases to be reported  
by the designated clinics and hospitals

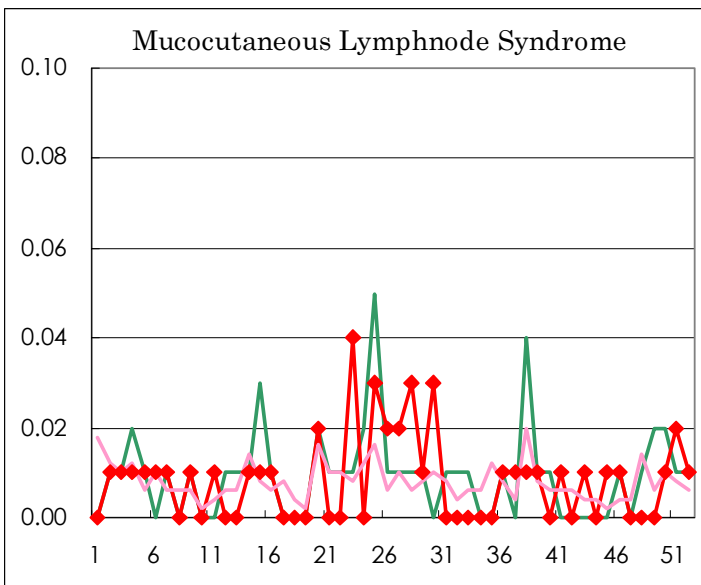
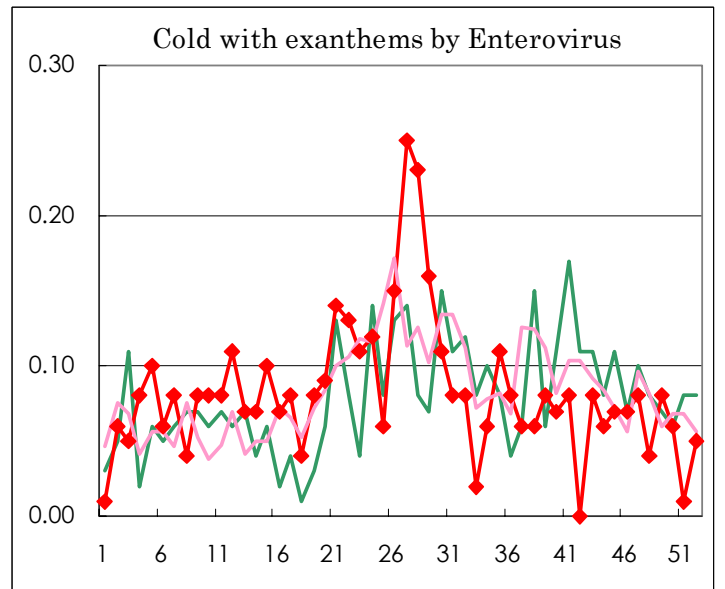
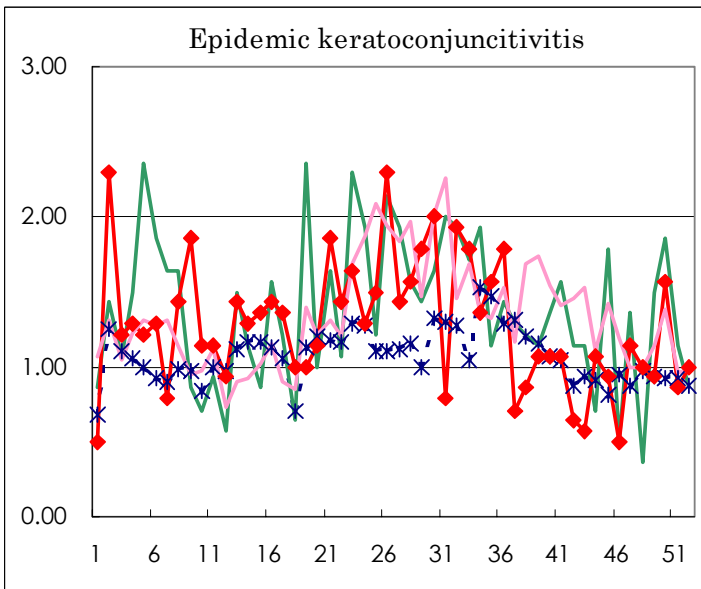
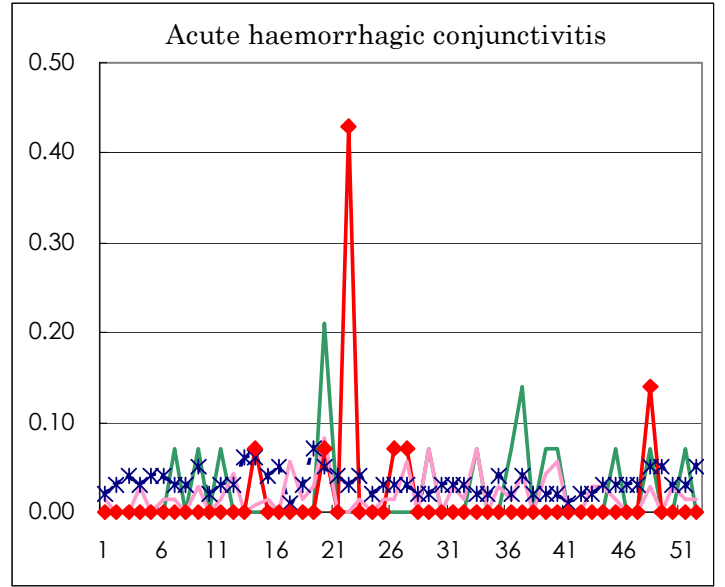
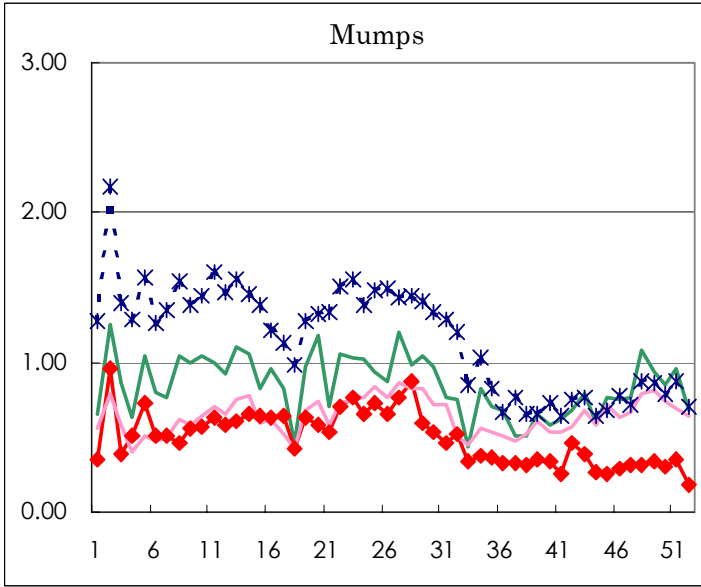
Diseases	Sex	Week(2002)				Total
		49th	50th	51st	52nd	
Influenza	M	29	59	167	<b>356</b>	611
	F	23	60	164	<b>353</b>	600
Pharygoconjunctival fever	M	7	5	6	<b>9</b>	27
	F	12	1	12	<b>6</b>	31
Group A streptococcal pharyngitis	M	58	43	61	<b>35</b>	197
	F	43	28	55	<b>33</b>	159
Infectious gastroenteritis	M	855	697	714	<b>501</b>	2767
	F	820	721	771	<b>521</b>	2833
Chickenpox	M	114	101	117	<b>110</b>	442
	F	96	98	111	<b>90</b>	395
Hand, foot, and mouth disease	M	5	5	6	<b>3</b>	19
	F	7	7	3	<b>1</b>	18
Erythema infectiosum	M	8	6	15	<b>9</b>	38
	F	6	11	9	<b>11</b>	37
Exanthem subitum	M	42	27	33	<b>30</b>	132
	F	41	20	35	<b>26</b>	122
Pertussis	M					
	F					
Rubella	M		1		<b>1</b>	2
	F				<b>1</b>	1
Herpangina	M	4	6	3	<b>4</b>	17
	F	4	3	2	<b>4</b>	13
Measles	M	2	5	3	<b>3</b>	13
	F	1	1	1	<b>2</b>	5
Mumps	M	32	23	27	<b>14</b>	96
	F	16	19	23	<b>11</b>	69
Cold with exanthems by Enterovirus	M	6	5	1	<b>5</b>	17
	F	6	4		<b>2</b>	12
Mucocutaneous Lymphnode Syndrome	M		2	3	<b>2</b>	7
	F					
Acute hemorrhagic conjunctivitis	M					
	F					
Epidemic keratoconjunctivitis	M	8	8	5	<b>9</b>	30
	F	5	14	7	<b>5</b>	31
Acute encephalitis (excluding Japanese encephalitis)	M					
	F					
Bacterial meningitis	M	1	1			2
	F					
Aseptic meningitis	M			1		1
	F	1	1			2
Mycoplasma pneumonia	M	2	4	2	<b>3</b>	11
	F	3	5		<b>3</b>	11
Chlamydial pneumonia (excluding psittacosis)	M					
	F					
Measles in adults	M	1		1		2
	F			1		1

( Blank means 0. )

# Disease Trend Graph (weekly reported cases per fixed-point in comparison)







Tokyo Metropolitan Government  
**Infectious Disease Surveillance Center**

