

INFECTIOUS DISEASES WEEKLY REPORT

# TOKYO IDWR

Tokyo Metropolitan Research Laboratory of Public Health

4 March 2003 / Number 8

- Number of patients with the diseases required notifying all the cases
- Number of patients with the diseases to be reported by the designated clinics and hospitals
- Disease trend graph (weekly reported cases per fixed-point in comparison)

## Surveillance System in Tokyo, Japan

### The diseases which all physicians must report

All physicians must report to health centers the incidence of the diseases which are shown at page one. Health centers electronically report the individual case to Tokyo Metropolitan Infectious Disease Surveillance Center.

### Fixed-point surveillance

The numbers of patients who visit designated clinics or hospitals during a week are reported to health centers ( There are 37 in Tokyo). And they electronically report the numbers to Tokyo Metropolitan Infectious Disease Surveillance Center. We have about 200 fixed points (clinics and hospitals) in Tokyo.

1<sup>st</sup> Week is early January and 52<sup>nd</sup> Week is end of December.

Tokyo Metropolitan Infectious Disease Surveillance Center  
Tokyo Metropolitan Research Laboratory of Public Health

TEL:81-3-3363-3213 FAX:81-3-5332-7365

e-mail: [idsc@tokyo-eiken.go.jp](mailto:idsc@tokyo-eiken.go.jp)

URL: [www.tokyo-eiken.go.jp](http://www.tokyo-eiken.go.jp)

## Number of patients with the diseases which all physicians must report

Category	Diseases	Tokyo				Japan		
		5th	6th	7th	8th	Total	8th	Total
I	Ebola hemorrhagic fever							
	Crimean-Congo hemorrhagic fever							
	Plague							
	Marburg disease							
	Lassa fever							
II	Cholera		1			1	1	3
	Shigellosis	1	2	2	1	14	11	77
	Typhoid fever	1				2	1	10
	Paratyphoid fever					2		4
	Acute poliomyelitis							
	Diphtheria							
III	Enterohemorrhagic <i>Escherichia coli</i> infection	1	1	1	2	6	14	72
IV	Amebiasis	4	3	1	1	13	10	69
	Echinococcosis						1	2
	Yellow fever							
	Psittacosis						1	4
	Relapsing fever							
	Acute viral hepatitis	8	1	3	1	19	14	122
	Q fever							1
	Rabies							
	Cryptosporidiosis							
	Creutzfeldt-Jakob Disease					1	1	20
	Sever invasive streptococcal infections	1	1			2		15
	Acquired immunodeficiency syndrome	10	4	8	5	48	13	111
	Coccidioidomycosis							
	Giardiasis	1	1			3	2	8
	Hemorrhagic fever with renal syndrome							
	Meningococcal meningitis		1			1		3
	Congenital rubella syndrome							
	Anthrax							
	Scrub typhus (Tsutsugamushi disease)							20
	Dengue fever					2		2
	Japanese spotted fever							
	Japanese encephalitis							
	Infant botulism							
	Syphilis	4			3	10	10	66
	Tetanus						1	5
	Vancomycin-resistant <i>enterococcus</i> infection							9
	Hantavirus pulmonary syndrome							
	Helpes B virus infection							
	Brucellosis							
	Epidemic typhus							
Malaria			2		4	1	16	
Lyme disease								
Legionellosis	2		1	1	5	2	23	
West Nile fever								

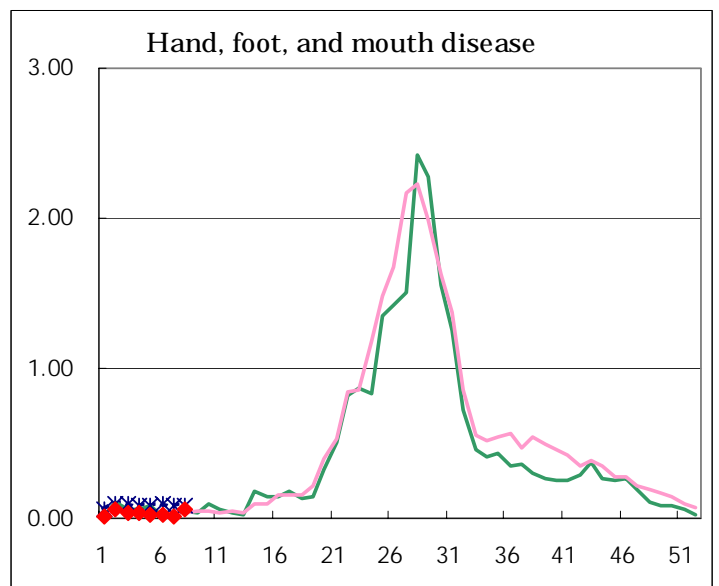
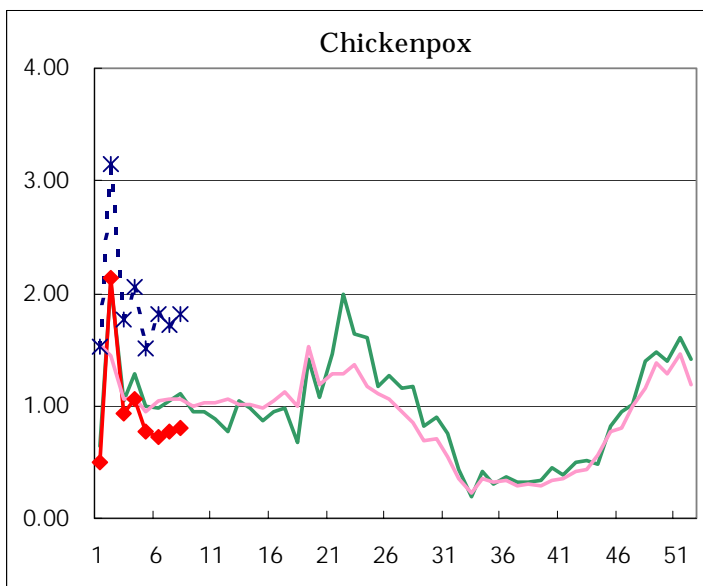
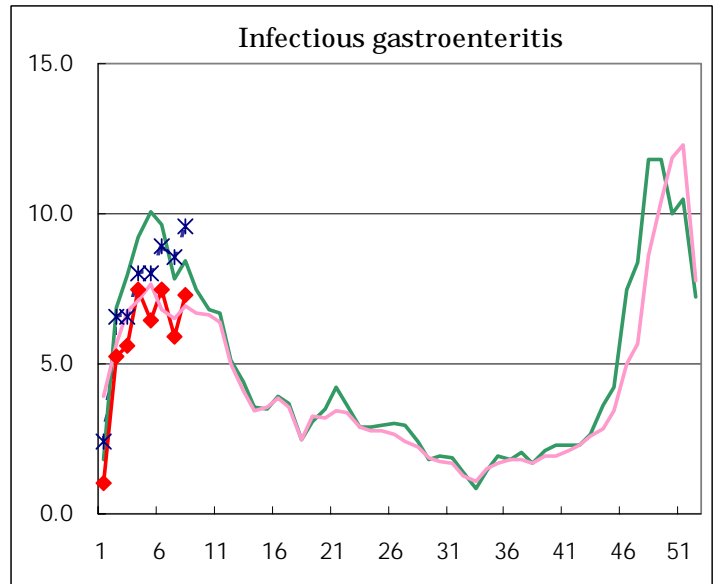
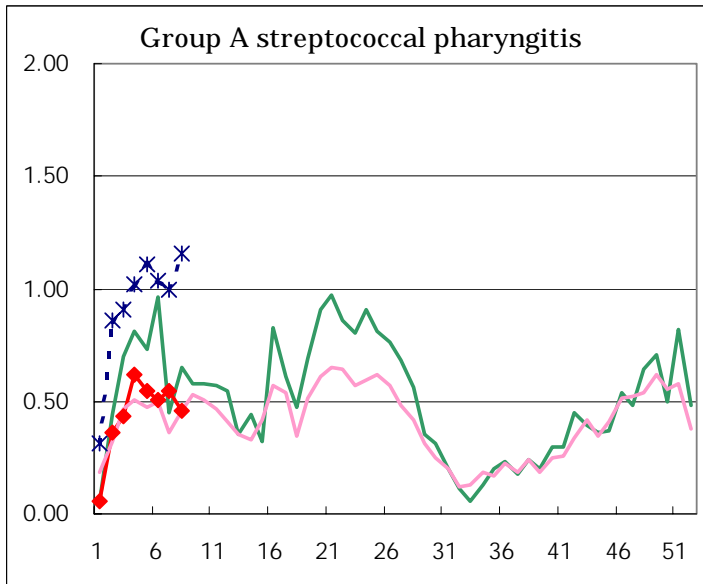
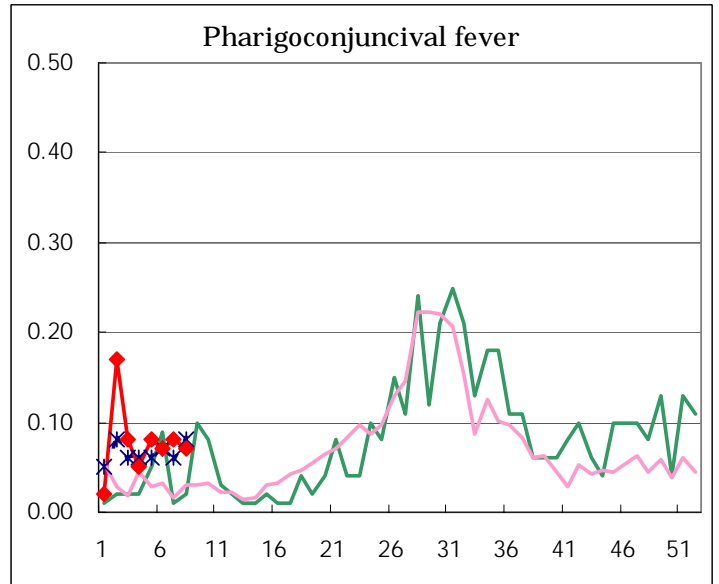
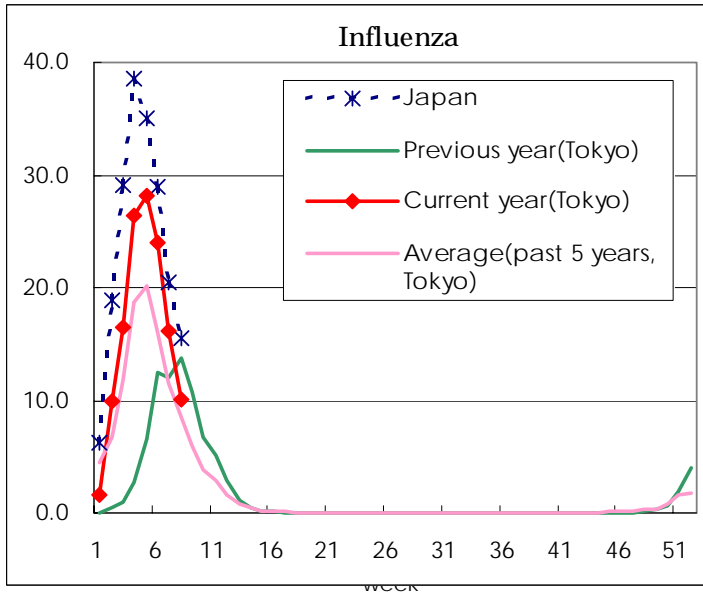
( Blank means 0. )

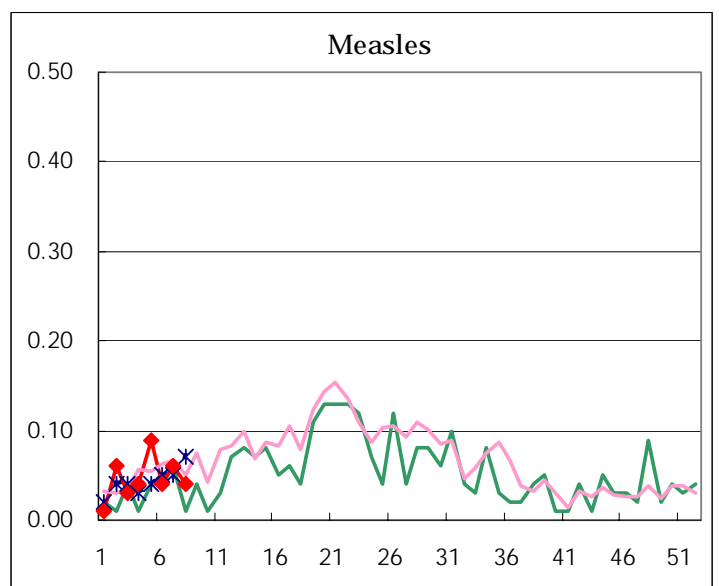
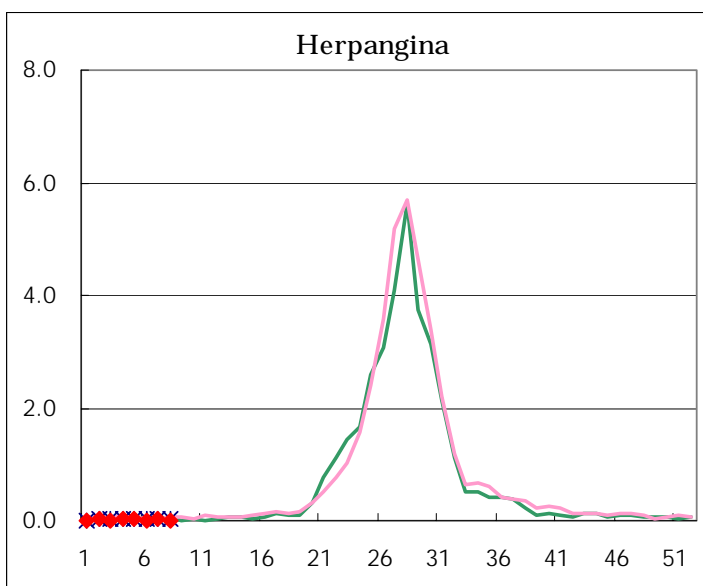
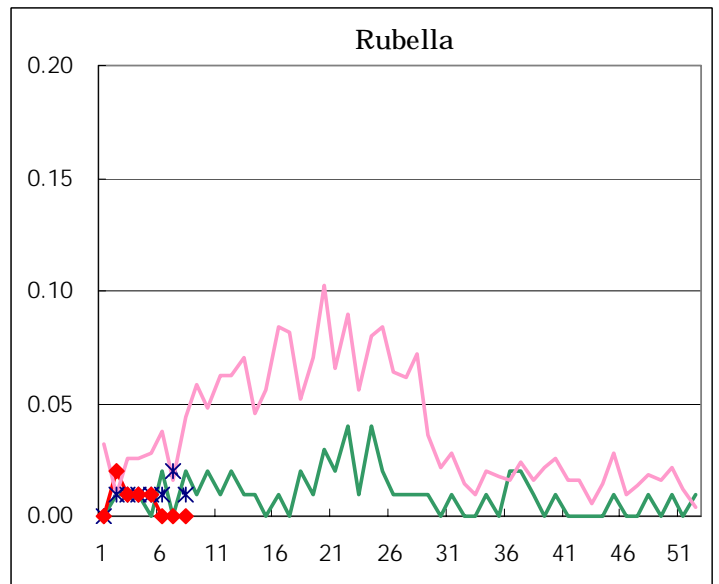
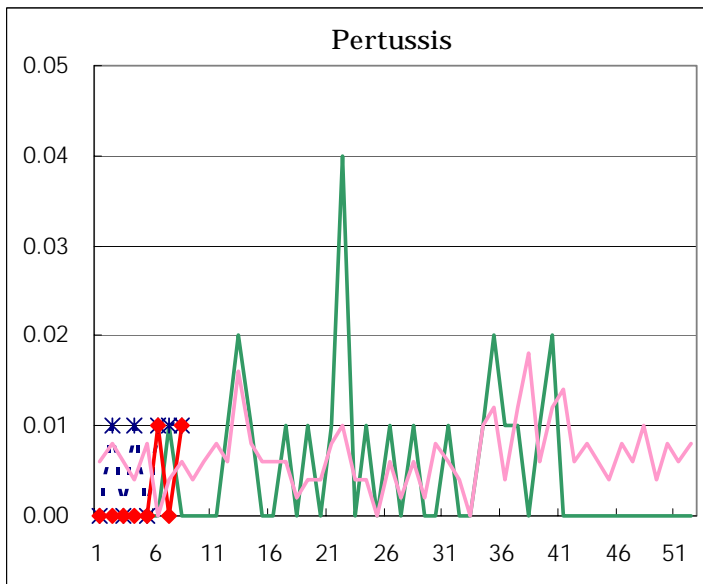
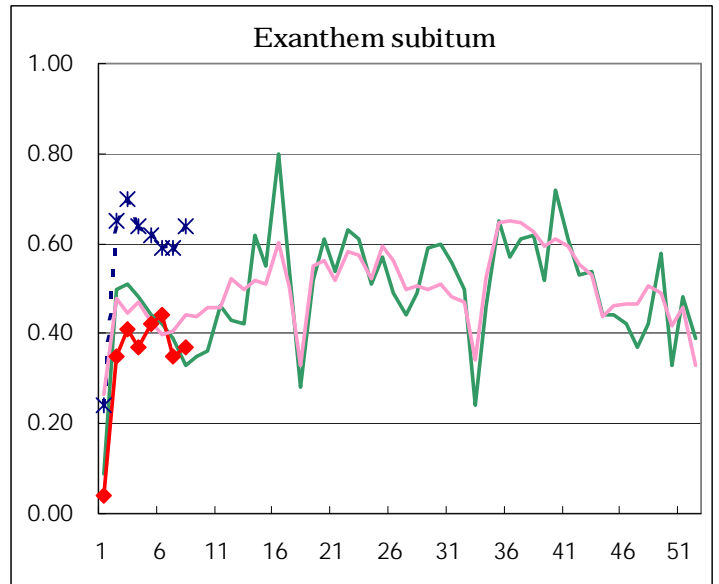
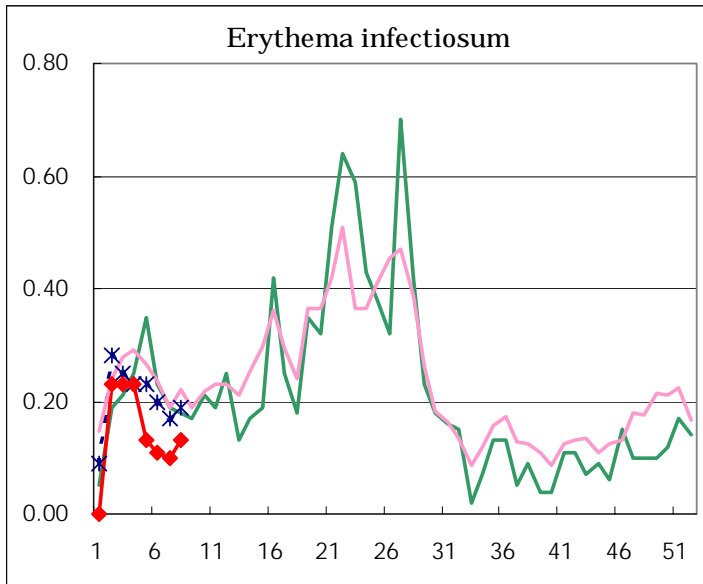
**Number of patients with the diseases to be reported  
by the designated clinics and hospitals**

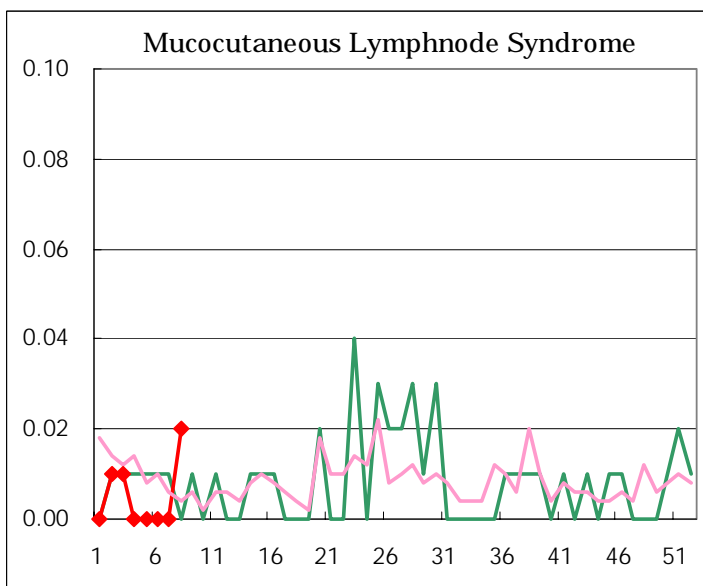
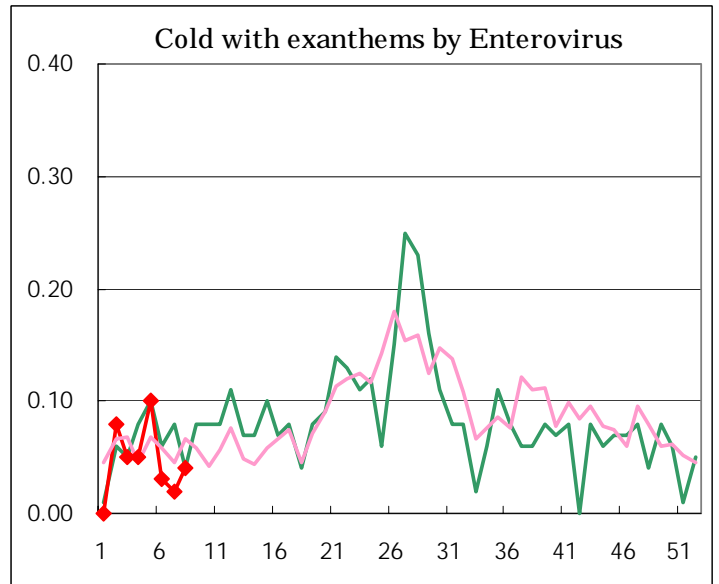
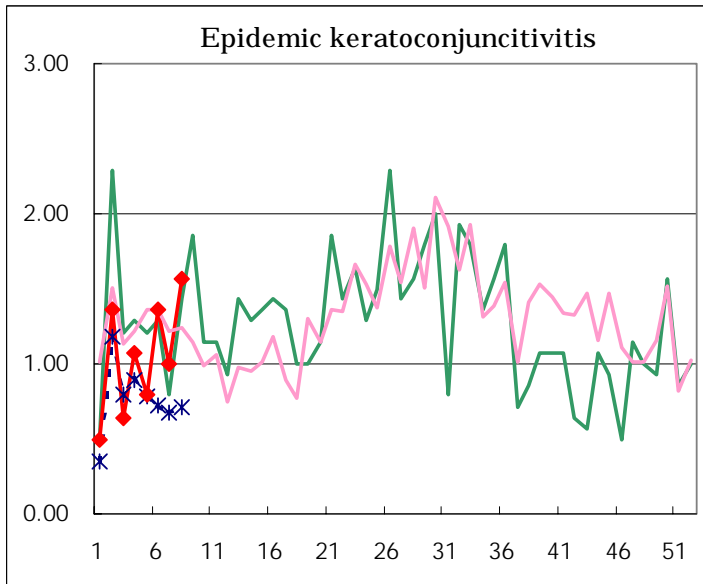
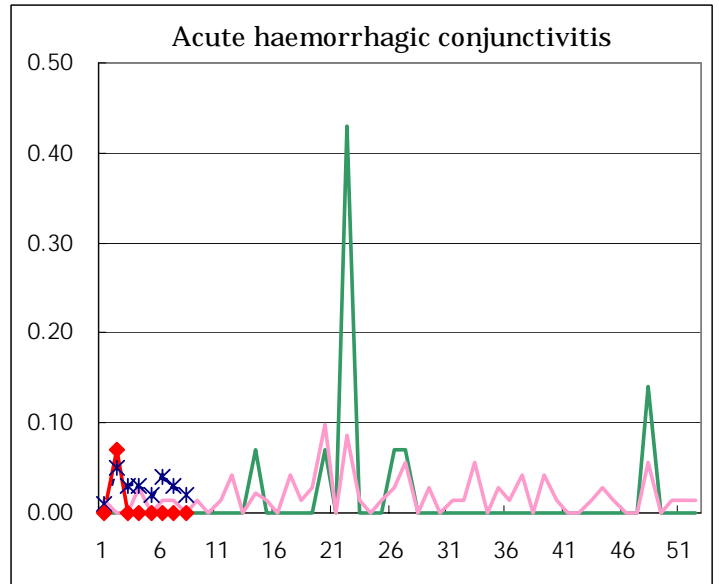
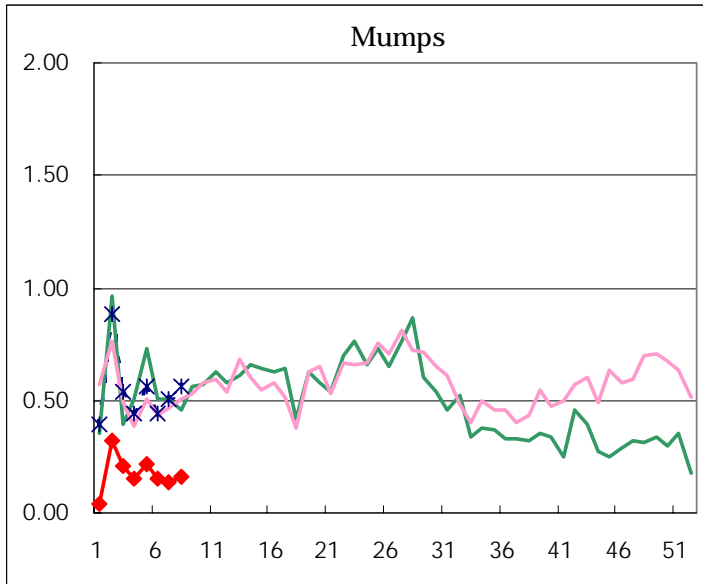
Diseases	Sex	Week(2003)				Total
		5th	6th	7th	8th	
Influenza	M	2589	2204	1456	878	7127
	F	2415	2121	1415	918	6869
Pharygoconjunctival fever	M	7	5	7	5	24
	F	4	5	4	5	18
Group A streptococcal pharyngitis	M	38	35	39	32	144
	F	40	37	39	33	149
Infectious gastroenteritis	M	453	523	420	541	1937
	F	465	542	420	493	1920
Chickenpox	M	65	54	61	63	243
	F	45	50	49	51	195
Hand, foot, and mouth disease	M	2	2	2	2	8
	F	1	1		6	8
Erythema infectiosum	M	12	9	9	12	42
	F	7	6	5	6	24
Exanthem subitum	M	35	28	22	24	109
	F	25	35	27	28	115
Pertussis	M		2			2
	F				1	1
Rubella	M			1		1
	F	1				1
Herpangina	M		1		1	2
	F	4	2	3	1	10
Measles	M	9	4	4	4	21
	F	4	2	4	2	12
Mumps	M	22	9	11	13	55
	F	9	13	9	10	41
Cold with exanthems by Enterovirus	M	8	2	2	3	15
	F	6	2	1	2	11
Mucocutaneous Lymphnode Syndrome	M				1	1
	F				2	2
Acute hemorrhagic conjunctivitis	M					
	F					
Epidemic keratoconjunctivitis	M	5	15	9	9	38
	F	6	4	5	13	28
Acute encephalitis (excluding Japanese encephalitis)	M				1	1
	F		1			1
Bacterial meningitis	M	1				1
	F	1				1
Aseptic meningitis	M					
	F					
Mycoplasma pneumonia	M	2	3		1	6
	F		4		2	6
Chlamydial pneumonia (excluding psittacosis)	M					
	F					
Measles in adults	M	2	1	3	4	10
	F	3	5		1	9

( Blank means 0. )

# Disease Trend Graph (weekly reported cases per fixed-point in comparison)







Tokyo Metropolitan Government  
**Infectious Disease Surveillance Center**

