

INFECTIOUS DISEASES WEEKLY REPORT

# TOKYO IDWR

Tokyo Metropolitan Research Laboratory of Public Health

11 March 2003 / Number 9

- Number of patients with the diseases required notifying all the cases
- Number of patients with the diseases to be reported by the designated clinics and hospitals
- Disease trend graph (weekly reported cases per fixed-point in comparison)

## Surveillance System in Tokyo, Japan

### The diseases which all physicians must report

All physicians must report to health centers the incidence of the diseases which are shown at page one. Health centers electronically report the individual case to Tokyo Metropolitan Infectious Disease Surveillance Center.

### Fixed-point surveillance

The numbers of patients who visit designated clinics or hospitals during a week are reported to health centers ( There are 37 in Tokyo). And they electronically report the numbers to Tokyo Metropolitan Infectious Disease Surveillance Center. We have about 200 fixed points (clinics and hospitals) in Tokyo.

1<sup>st</sup> Week is early January and 52<sup>nd</sup> Week is end of December.

Tokyo Metropolitan Infectious Disease Surveillance Center  
Tokyo Metropolitan Research Laboratory of Public Health

TEL:81-3-3363-3213 FAX:81-3-5332-7365

e-mail: [idsc@tokyo-eiken.go.jp](mailto:idsc@tokyo-eiken.go.jp)

URL: [www.tokyo-eiken.go.jp](http://www.tokyo-eiken.go.jp)

## Number of patients with the diseases which all physicians must report

| Category        | Diseases  | Tokyo |     |     |     |       | Japan |       |
|-----------------|---|-------|-----|-----|-----|-------|-------|-------|
|                 |   | 6th   | 7th | 8th | 9th | Total | 9th   | Total |
| I               | Ebola hemorrhagic fever                             |       |     |     |     |       |       |       |
|                 | Crimean-Congo hemorrhagic fever                     |       |     |     |     |       |       |       |
|                 | Plague  |       |     |     |     |       |       |       |
|                 | Marburg disease                                     |       |     |     |     |       |       |       |
|                 | Lassa fever   |       |     |     |     |       |       |       |
| II              | Cholera   | 1     |     |     |     | 1     | 1     | 4     |
|                 | Shigellosis   | 2     | 2   | 1   | 4   | 18    | 10    | 90    |
|                 | Typhoid fever                                       |       |     |     | 1   | 3     | 2     | 13    |
|                 | Paratyphoid fever                                   |       |     |     |     | 2     | 1     | 5     |
|                 | Acute poliomyelitis                                 |       |     |     |     |       |       |       |
|                 | Diphtheria  |       |     |     |     |       |       |       |
| III             | Enterohemorrhagic <i>Escherichia coli</i> infection | 1     | 1   | 2   |     | 6     | 5     | 77    |
| IV              | Amebiasis   | 3     | 1   | 1   | 3   | 16    | 7     | 81    |
|                 | Echinococcosis                                      |       |     |     |     |       |       | 2     |
|                 | Yellow fever  |       |     |     |     |       |       |       |
|                 | Psittacosis   |       |     |     |     |       |       | 4     |
|                 | Relapsing fever                                     |       |     |     |     |       |       |       |
|                 | Acute viral hepatitis                               | 1     | 3   | 1   | 4   | 23    | 7     | 141   |
|                 | Q fever   |       |     |     |     |       |       | 1     |
|                 | Rabies  |       |     |     |     |       |       |       |
|                 | Cryptosporidiosis                                   |       |     |     |     |       |       |       |
|                 | Creutzfeldt-Jakob Disease                           |       |     |     |     | 1     |       | 21    |
|                 | Sever invasive streptococcal infections             | 1     |     |     |     | 2     | 1     | 17    |
|                 | Acquired immunodeficiency syndrome                  | 4     | 8   | 5   | 6   | 54    | 9     | 128   |
|                 | Coccidioidomycosis                                  |       |     |     |     |       |       |       |
|                 | Giardiasis  | 1     |     |     | 1   | 4     | 1     | 10    |
|                 | Hemorrhagic fever with renal syndrome               |       |     |     |     |       |       |       |
|                 | Meningococcal meningitis                            | 1     |     |     |     | 1     | 1     | 4     |
|                 | Congenital rubella syndrome                         |       |     |     |     |       |       |       |
|                 | Anthrax   |       |     |     |     |       |       |       |
|                 | Scrub typhus (Tsutsugamushi disease)                |       |     |     |     |       | 1     | 21    |
|                 | Dengue fever  |       |     |     |     | 2     |       | 2     |
|                 | Japanese spotted fever                              |       |     |     |     |       |       |       |
|                 | Japanese encephalitis                               |       |     |     |     |       |       |       |
|                 | Infant botulism                                     |       |     |     |     |       |       |       |
|                 | Syphilis  |       |     | 3   | 2   | 12    | 7     | 74    |
|                 | Tetanus   |       |     |     | 2   | 2     | 2     | 8     |
|                 | Vancomycin-resistant <i>enterococcus</i> infection  |       |     |     | 1   | 1     | 1     | 11    |
|                 | Hantavirus pulmonary syndrome                       |       |     |     |     |       |       |       |
|                 | Herpes B virus infection                            |       |     |     |     |       |       |       |
|                 | Brucellosis   |       |     |     |     |       |       |       |
|                 | Epidemic typhus                                     |       |     |     |     |       |       |       |
| Malaria         |   | 2     |     |     | 4   |       | 17    |       |
| Lyme disease    |   |       |     |     |     |       |       |       |
| Legionellosis   |   | 1     | 1   |     | 5   | 3     | 28    |       |
| West Nile fever |   |       |     |     |     |       |       |       |

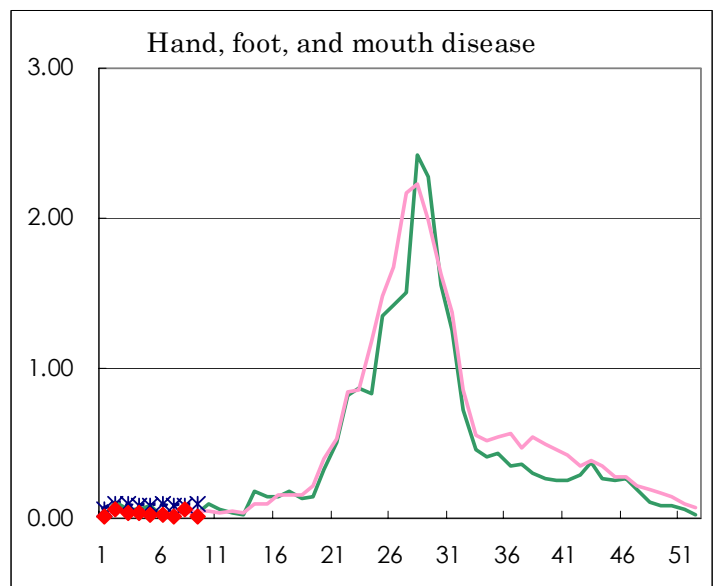
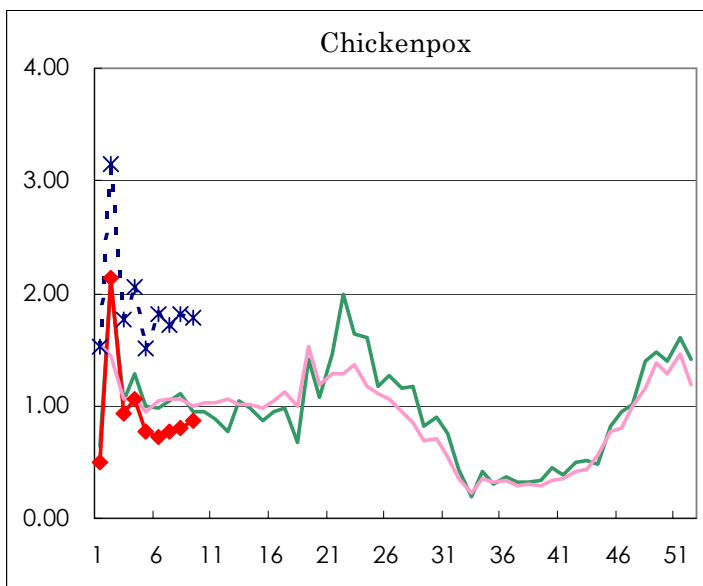
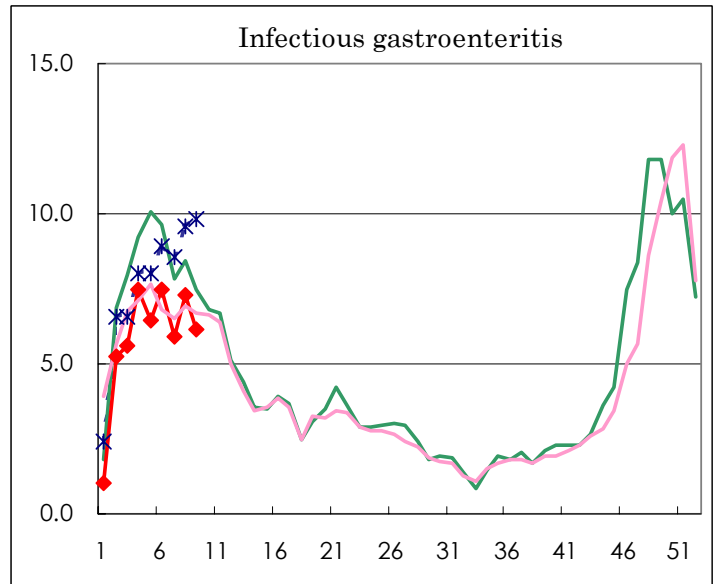
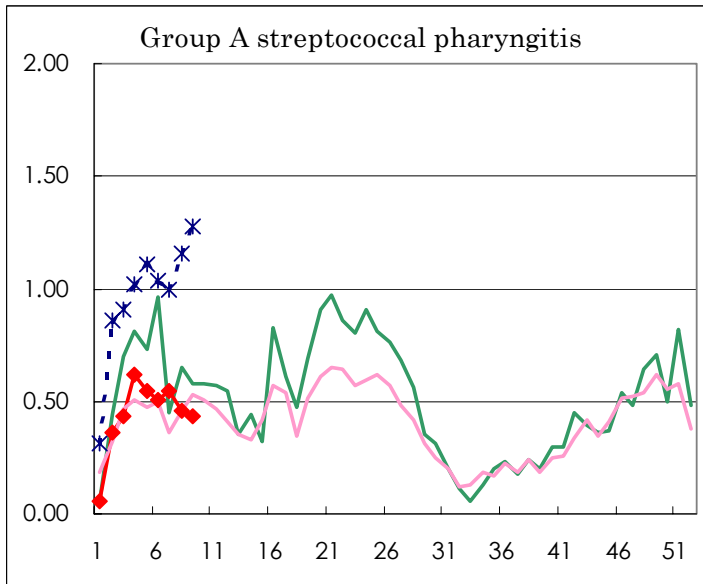
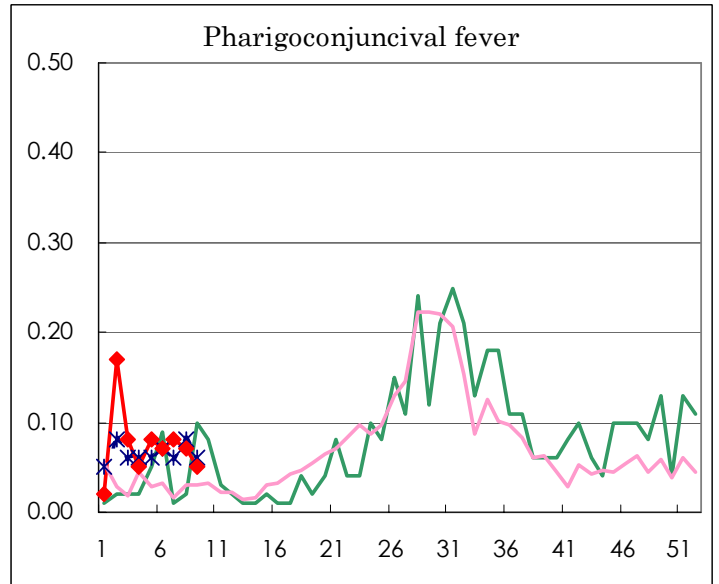
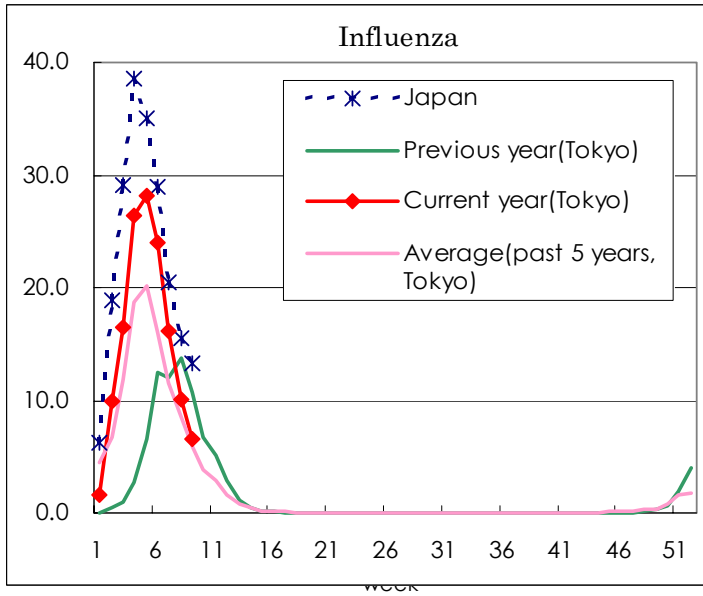
( Blank means 0. )

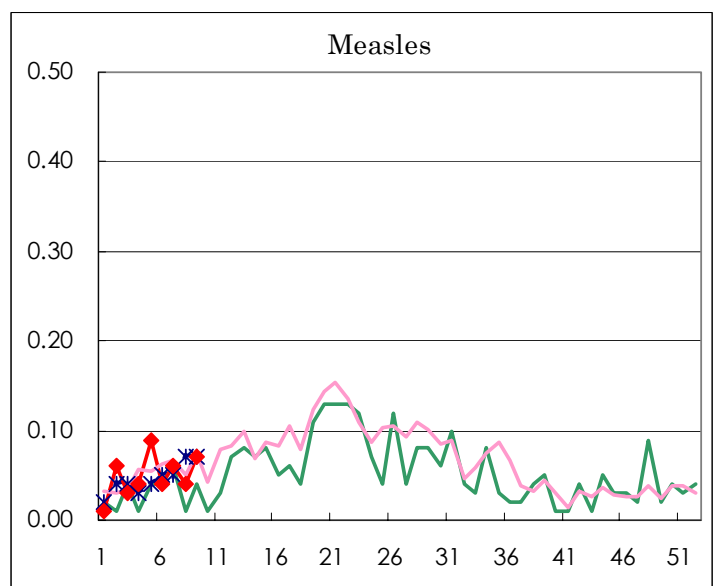
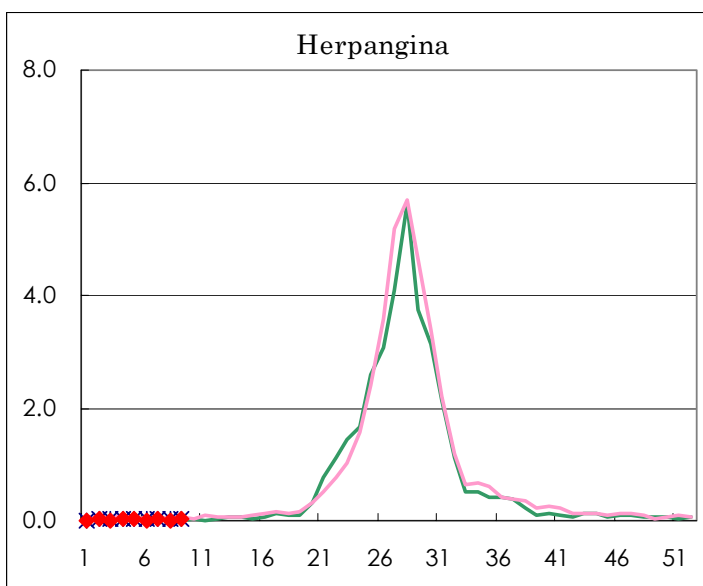
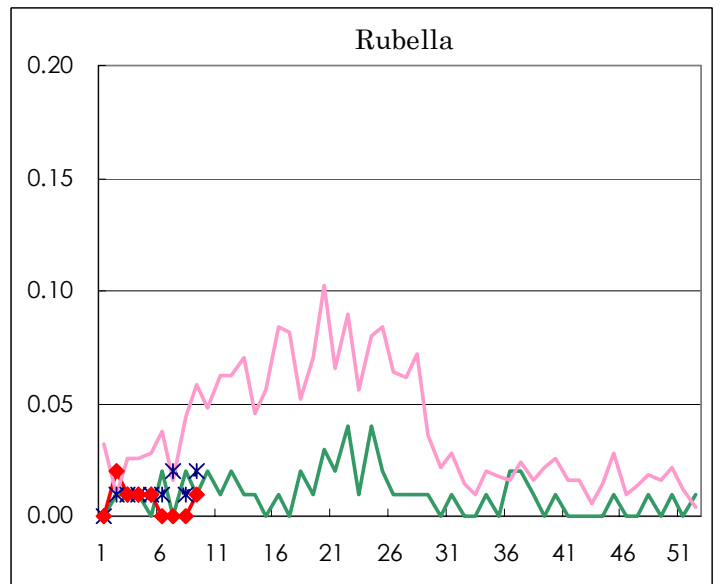
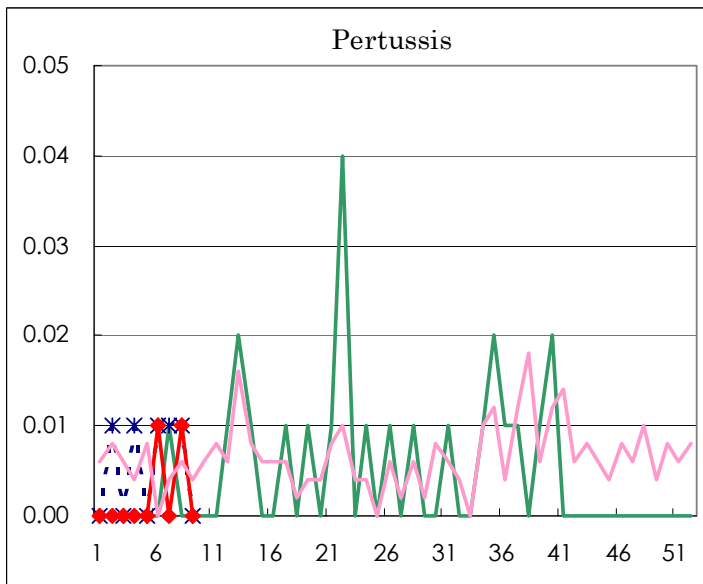
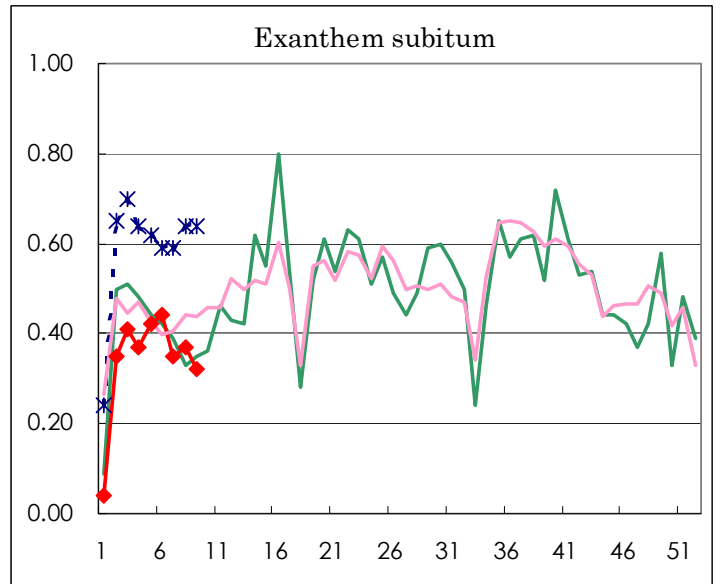
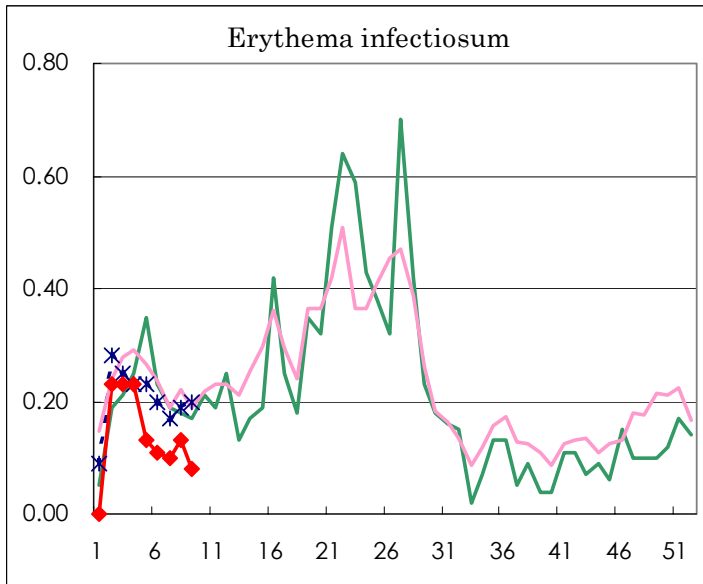
Number of patients with the diseases to be reported  
by the designated clinics and hospitals

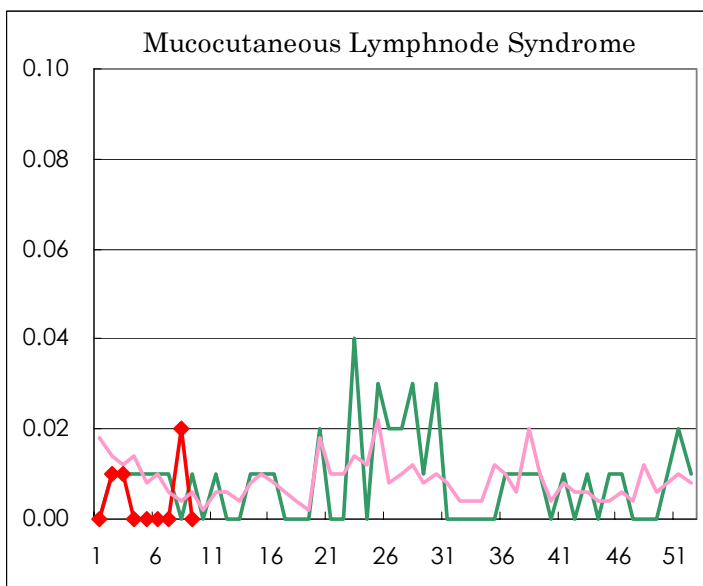
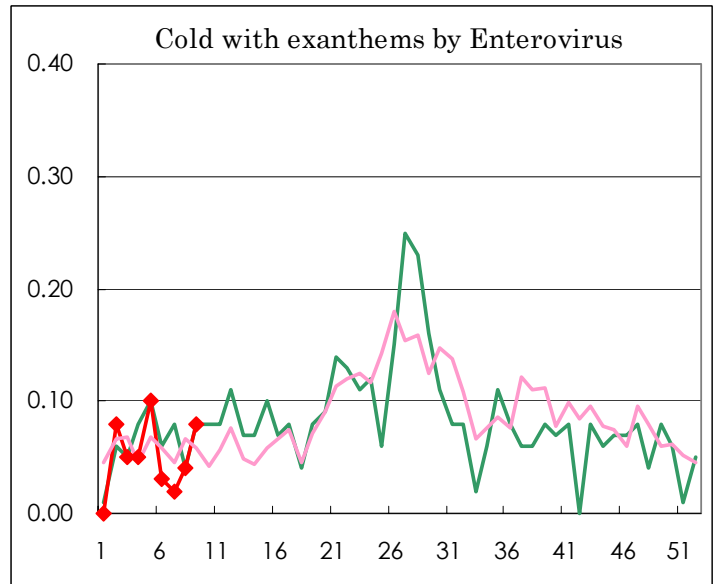
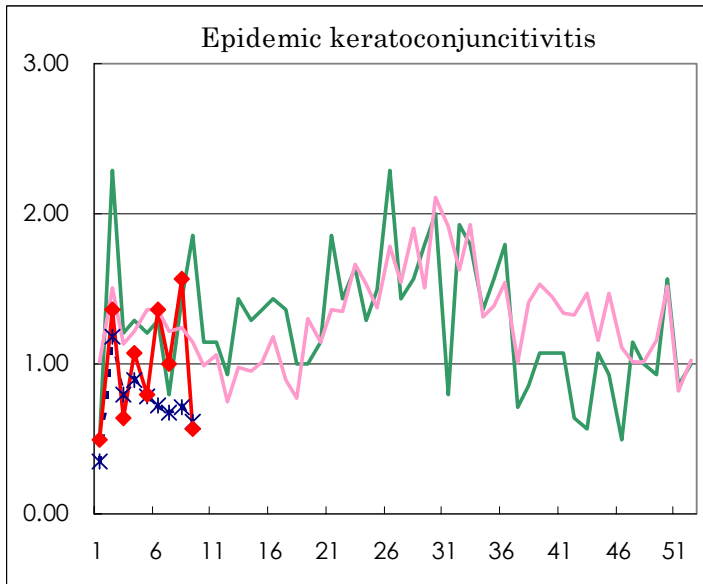
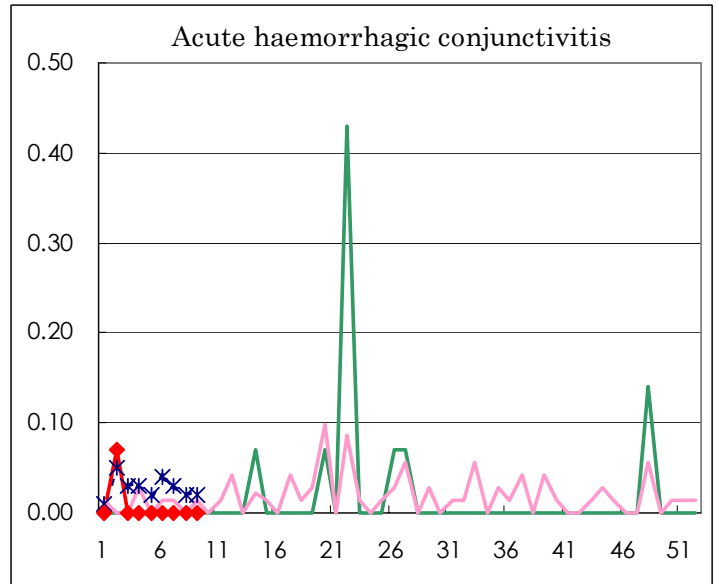
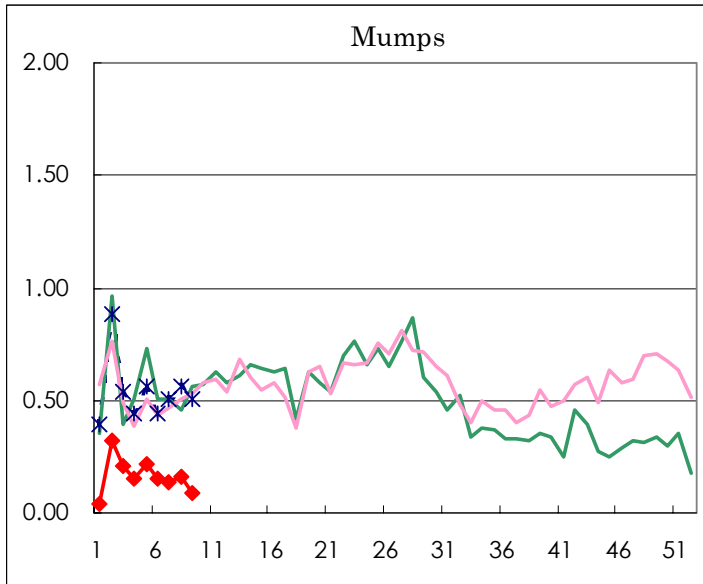
| Diseases  | Sex | Week(2002) |      |     |            | Total |
|---|-----|------------|------|-----|------------|-------|
|   |     | 6th        | 7th  | 8th | 9th        |       |
| Influenza   | M   | 2204       | 1456 | 878 | <b>582</b> | 5120  |
|   | F   | 2121       | 1415 | 918 | <b>573</b> | 5027  |
| Pharygoconjunctival fever                               | M   | 5          | 7    | 5   | <b>2</b>   | 19    |
|   | F   | 5          | 4    | 5   | <b>5</b>   | 19    |
| Group A streptococcal pharyngitis                       | M   | 35         | 39   | 32  | <b>36</b>  | 142   |
|   | F   | 37         | 39   | 33  | <b>25</b>  | 134   |
| Infectious gastroenteritis                              | M   | 523        | 420  | 541 | <b>435</b> | 1919  |
|   | F   | 542        | 420  | 493 | <b>434</b> | 1889  |
| Chickenpox  | M   | 54         | 61   | 63  | <b>71</b>  | 249   |
|   | F   | 50         | 49   | 51  | <b>51</b>  | 201   |
| Hand, foot, and mouth disease                           | M   | 2          | 2    | 2   |            | 6     |
|   | F   | 1          |      | 6   | <b>1</b>   | 8     |
| Erythema infectiosum                                    | M   | 9          | 9    | 12  | <b>4</b>   | 34    |
|   | F   | 6          | 5    | 6   | <b>7</b>   | 24    |
| Exanthem subitum  | M   | 28         | 22   | 24  | <b>26</b>  | 100   |
|   | F   | 35         | 27   | 28  | <b>20</b>  | 110   |
| Pertussis   | M   | 2          |      |     |            | 2     |
|   | F   |            |      | 1   |            | 1     |
| Rubella   | M   |            | 1    |     | <b>1</b>   | 2     |
|   | F   |            |      |     |            |       |
| Herpangina  | M   | 1          |      | 1   | <b>1</b>   | 3     |
|   | F   | 2          | 3    | 1   | <b>2</b>   | 8     |
| Measles   | M   | 4          | 4    | 4   | <b>8</b>   | 20    |
|   | F   | 2          | 4    | 2   | <b>2</b>   | 10    |
| Mumps   | M   | 9          | 11   | 13  | <b>7</b>   | 40    |
|   | F   | 13         | 9    | 10  | <b>6</b>   | 38    |
| Cold with exanthems by Enterovirus                      | M   | 2          | 2    | 3   | <b>6</b>   | 13    |
|   | F   | 2          | 1    | 2   | <b>5</b>   | 10    |
| Mucocutaneous Lymphnode Syndrome                        | M   |            |      | 1   |            | 1     |
|   | F   |            |      | 2   |            | 2     |
| Acute hemorrhagic conjunctivitis                        | M   |            |      |     |            |       |
|   | F   |            |      |     |            |       |
| Epidemic keratoconjunctivitis                           | M   | 15         | 9    | 9   | <b>6</b>   | 39    |
|   | F   | 4          | 5    | 13  | <b>2</b>   | 24    |
| Acute encephalitis<br>(excluding Japanese encephalitis) | M   |            |      | 1   |            | 1     |
|   | F   | 1          |      |     |            | 1     |
| Bacterial meningitis                                    | M   |            |      |     |            |       |
|   | F   |            |      |     |            |       |
| Aseptic meningitis                                      | M   |            |      |     |            |       |
|   | F   |            |      |     |            |       |
| Mycoplasma pneumonia                                    | M   | 3          |      | 1   |            | 4     |
|   | F   | 4          |      | 2   | <b>2</b>   | 8     |
| Chlamydial pneumonia<br>(excluding psittacosis)         | M   |            |      |     |            |       |
|   | F   |            |      |     |            |       |
| Measles in adults                                       | M   | 1          | 3    | 4   | <b>2</b>   | 10    |
|   | F   | 5          |      | 1   | <b>1</b>   | 7     |

( Blank means 0. )

# Disease Trend Graph (weekly reported cases per fixed-point in comparison)







Tokyo Metropolitan Government  
**Infectious Disease Surveillance Center**

