

INFECTIOUS DISEASES WEEKLY REPORT

# TOKYO IDWR

Tokyo Metropolitan Research Laboratory of Public Health

8 April 2003 / Number 13

- Number of patients with the diseases required notifying all the cases
- Number of patients with the diseases to be reported by the designated clinics and hospitals
- Disease trend graph (weekly reported cases per fixed-point in comparison)

## Surveillance System in Tokyo, Japan

### The diseases which all physicians must report

All physicians must report to health centers the incidence of the diseases which are shown at page one. Health centers electronically report the individual case to Tokyo Metropolitan Infectious Disease Surveillance Center.

### Fixed-point surveillance

The numbers of patients who visit designated clinics or hospitals during a week are reported to health centers ( There are 37 in Tokyo). And they electronically report the numbers to Tokyo Metropolitan Infectious Disease Surveillance Center. We have about 200 fixed points (clinics and hospitals) in Tokyo.

1<sup>st</sup> Week is early January and 52<sup>nd</sup> Week is end of December.

Tokyo Metropolitan Infectious Disease Surveillance Center  
Tokyo Metropolitan Research Laboratory of Public Health

TEL:81-3-3363-3213 FAX:81-3-5332-7365

e-mail: [idsc@tokyo-eiken.go.jp](mailto:idsc@tokyo-eiken.go.jp)

URL: [www.tokyo-eiken.go.jp](http://www.tokyo-eiken.go.jp)

## Number of patients with the diseases which all physicians must report

Category	Diseases	Tokyo					Japan	
		10th	11st	12nd	13rd	Total	13rd	Total
I	Ebola hemorrhagic fever							
	Crimean-Congo hemorrhagic fever							
	Plague							
	Marburg disease							
	Lassa fever							
II	Cholera				1	2	1	8
	Shigellosis		4	1	2	25	8	127
	Typhoid fever		1		3	7	4	20
	Paratyphoid fever					2	2	7
	Acute poliomyelitis							
	Diphtheria							
III	Enterohemorrhagic <i>Escherichia coli</i> infection	1	2			9	6	105
IV	Amebiasis	3	5	1		25	3	119
	Echinococcosis							4
	Yellow fever							
	Psittacosis						1	10
	Relapsing fever							
	Acute viral hepatitis	3	2		2	30	10	216
	Q fever			1		1		2
	Rabies							
	Cryptosporidiosis							1
	Creutzfeldt-Jakob Disease		1			2		27
	Sever invasive streptococcal infections					2		22
	Acquired immunodeficiency syndrome	4	6	4	9	77	10	196
	Coccidioidomycosis							
	Giardiasis		1	1		6		13
	Hemorrhagic fever with renal syndrome							
	Meningococcal meningitis		1			2		7
	Congenital rubella syndrome							
	Anthrax							
	Scrub typhus (Tsutsugamushi disease)						1	30
	Dengue fever				1	3	1	7
	Japanese spotted fever							
	Japanese encephalitis							
	Infant botulism							
	Syphilis	1	3	1	3	20	6	107
	Tetanus					2	3	15
	Vancomycin-resistant <i>enterococcus</i> infection					1	1	16
	Hantavirus pulmonary syndrome							
	Helpes B virus infection							
	Brucellosis							
	Epidemic typhus							
Malaria				1	5	1	19	
Lyme disease								
Legionellosis	1				6		34	
West Nile fever								

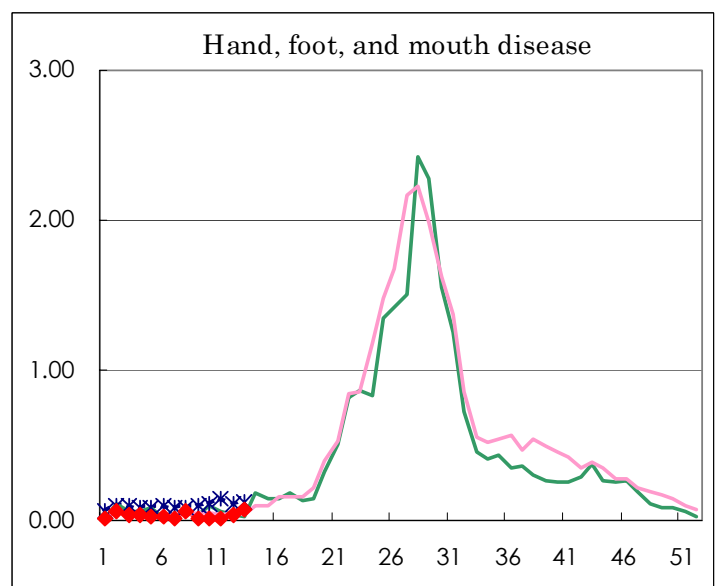
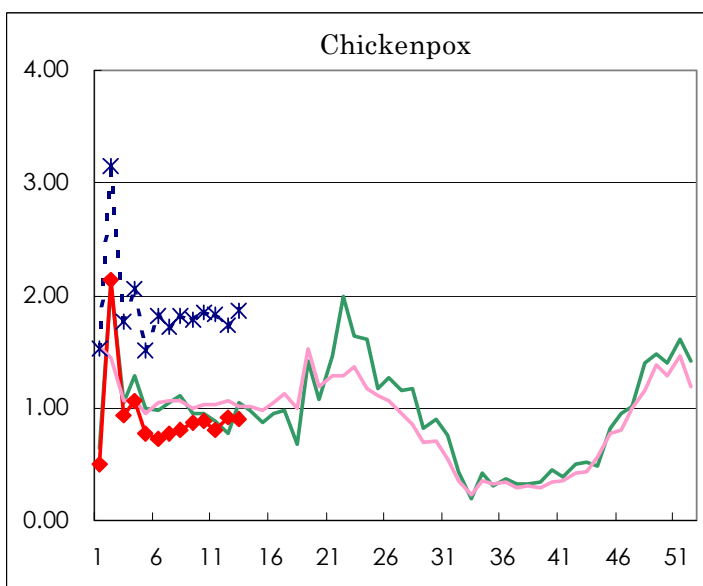
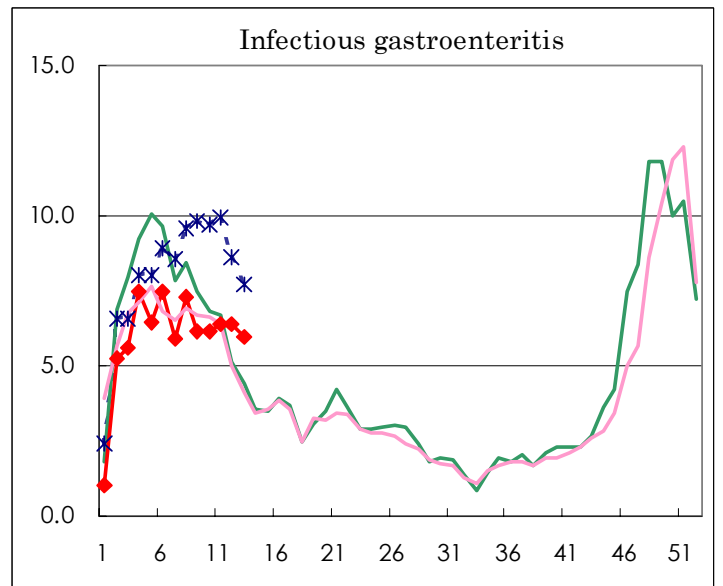
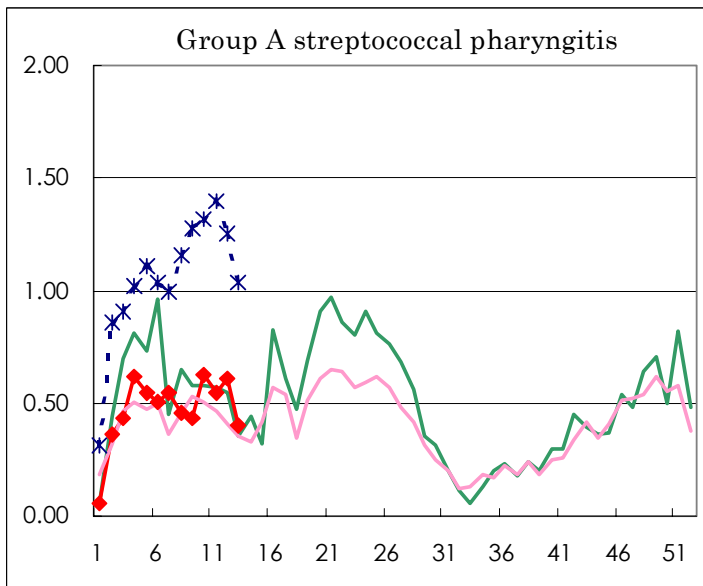
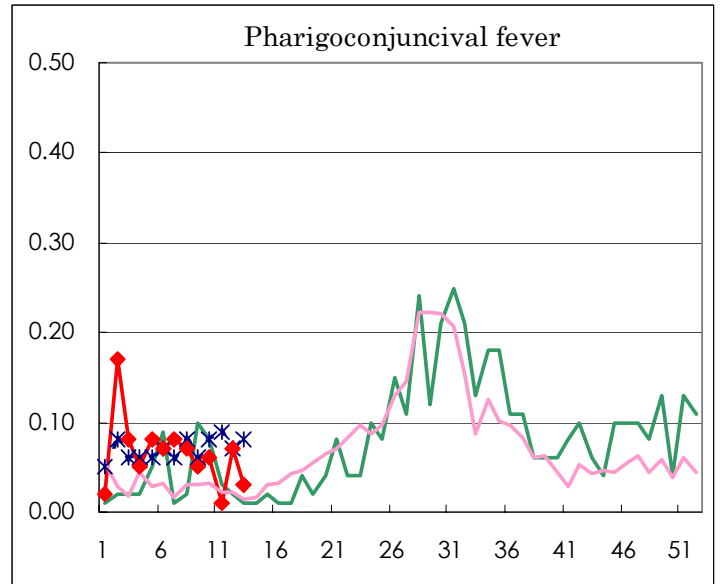
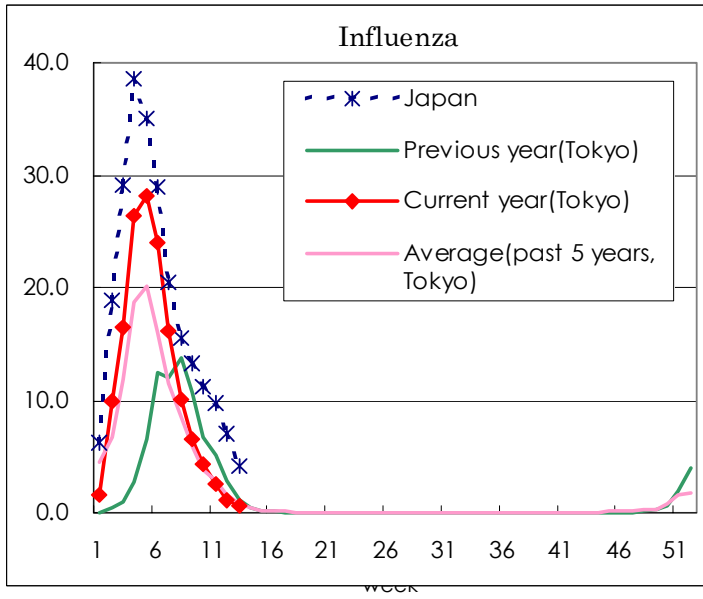
( Blank means 0. )

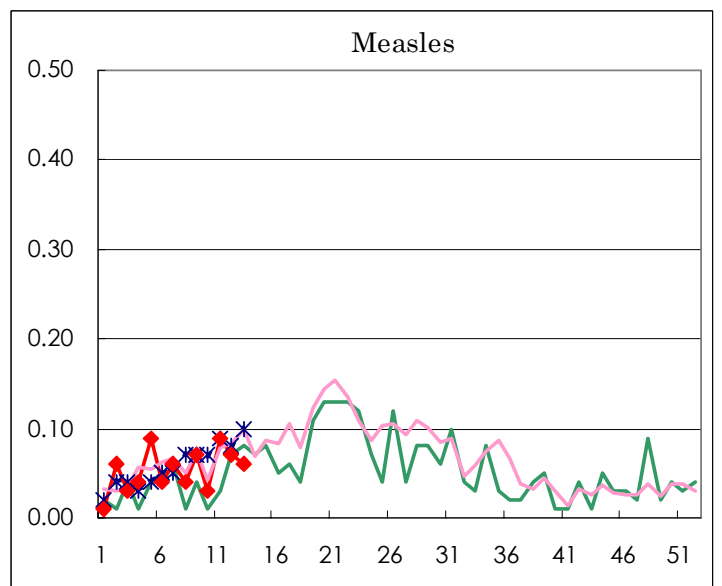
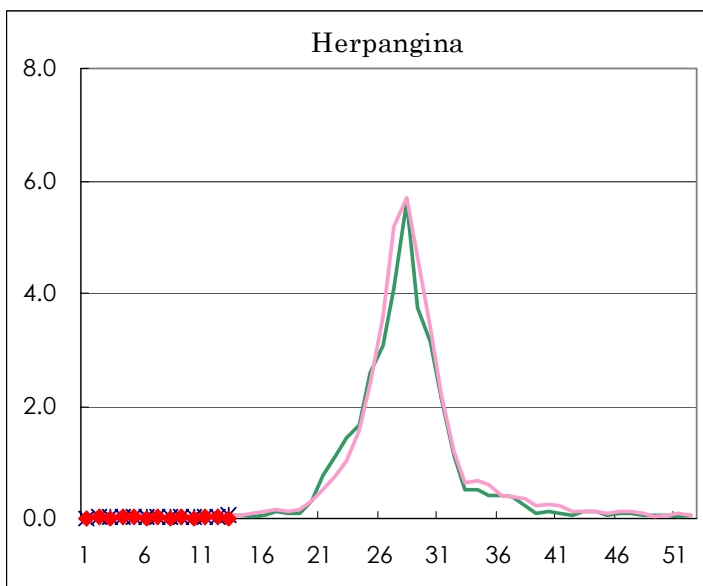
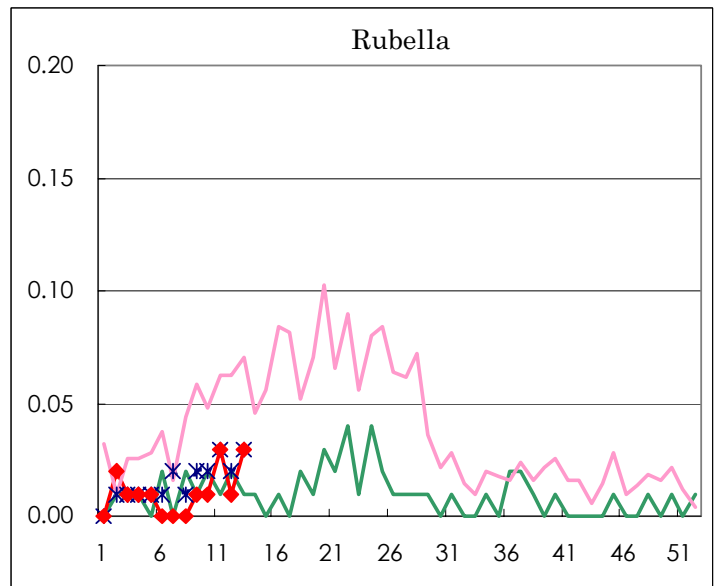
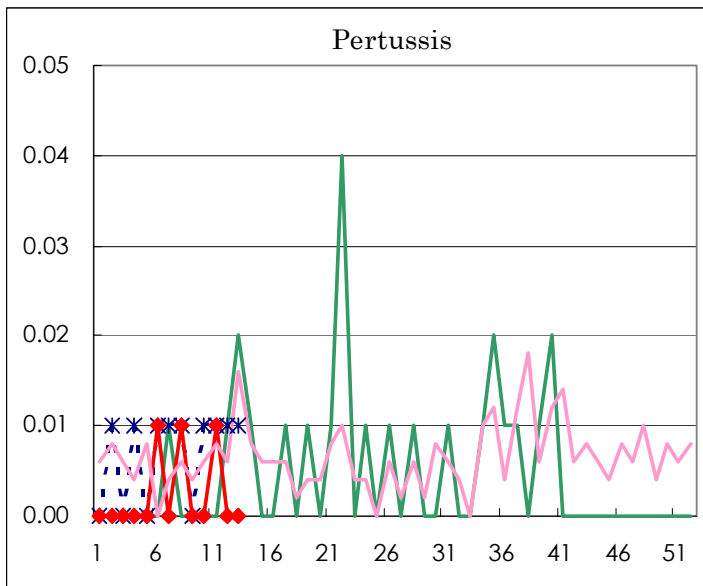
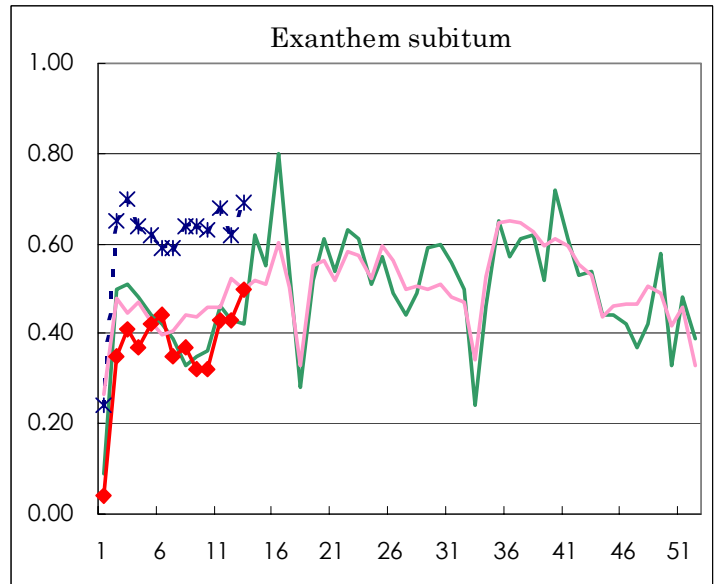
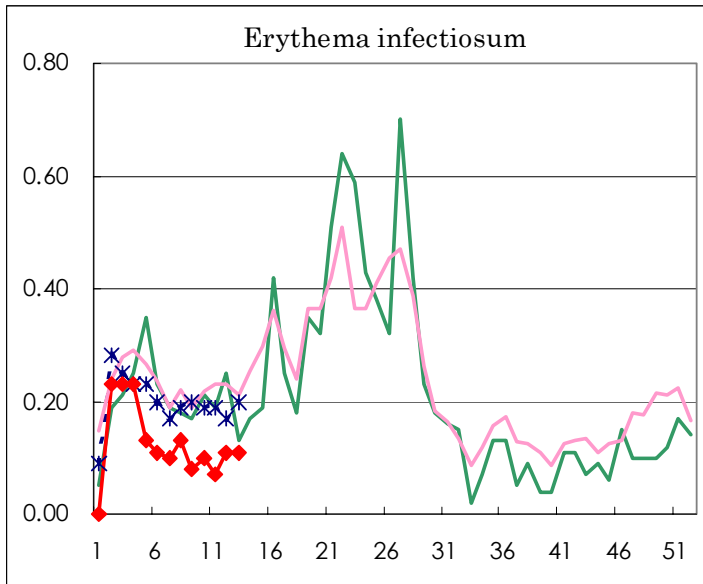
Number of patients with the diseases to be reported  
by the designated clinics and hospitals

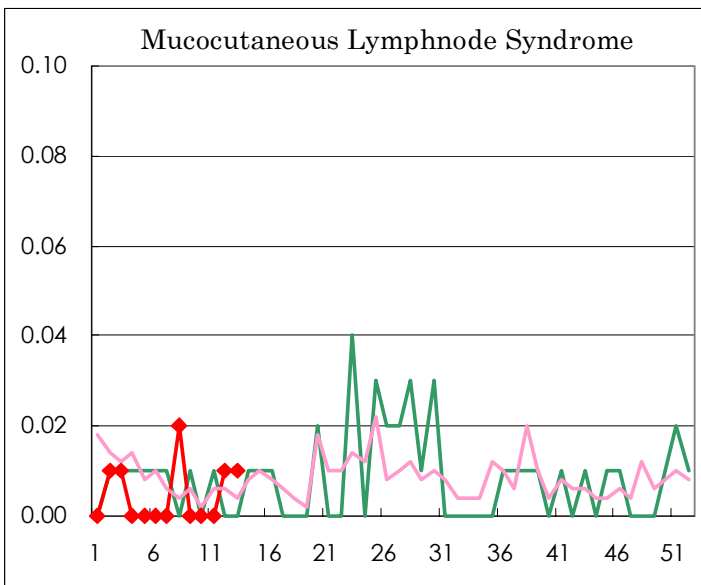
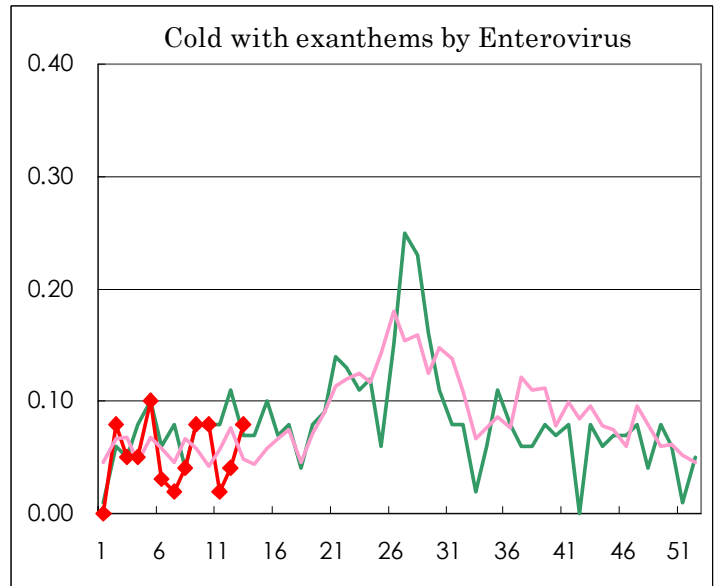
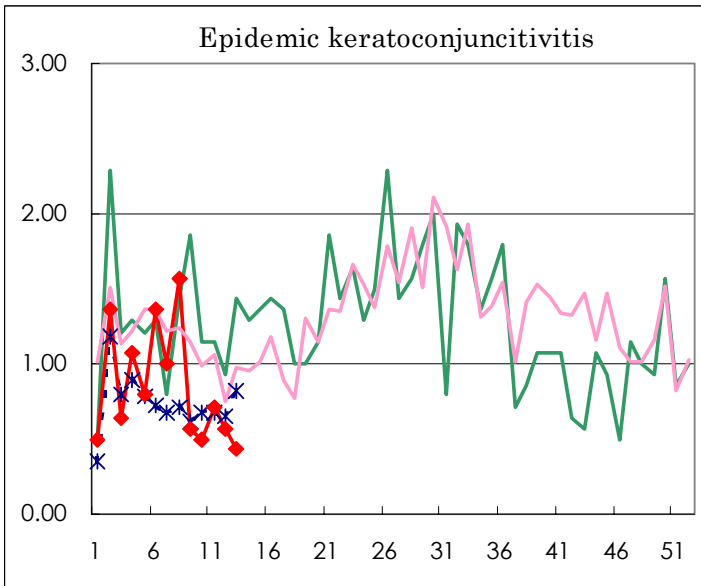
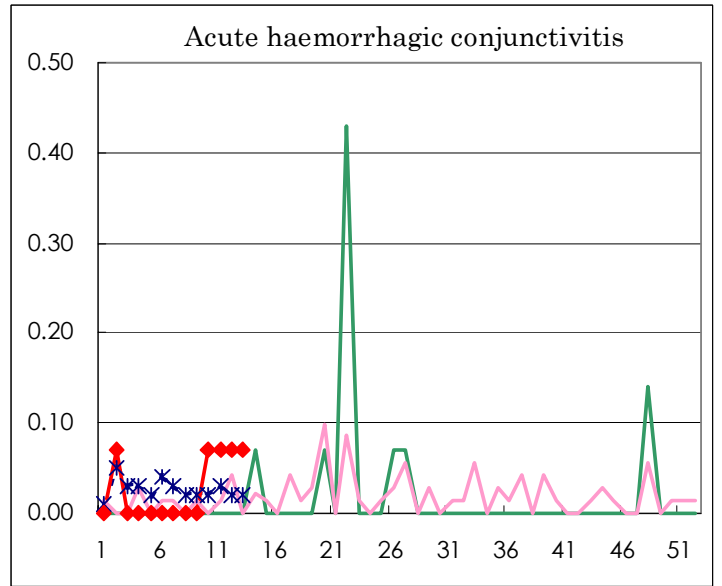
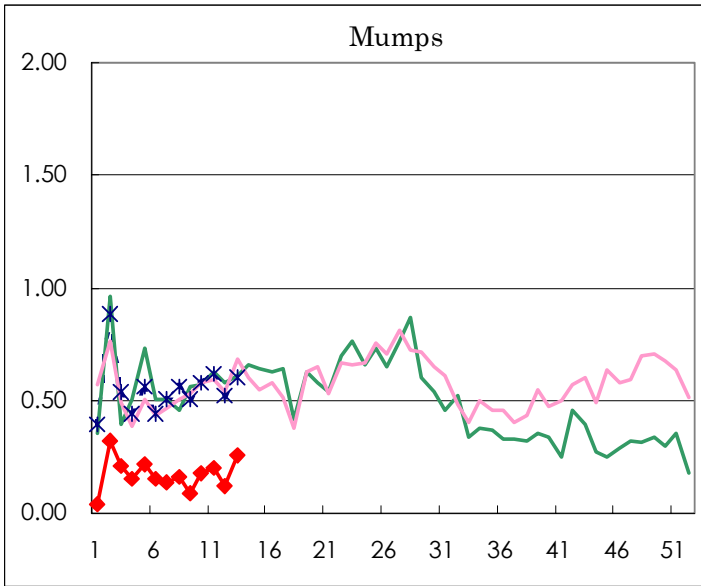
Diseases	Sex	Week(2002)				Total
		10th	11st	12nd	13rd	
Influenza	M	369	206	106	<b>62</b>	743
	F	391	248	90	<b>58</b>	787
Pharygoconjunctival fever	M	3	2	3	<b>1</b>	9
	F	5		7	<b>3</b>	15
Group A streptococcal pharyngitis	M	46	44	44	<b>34</b>	168
	F	43	34	42	<b>23</b>	142
Infectious gastroenteritis	M	454	457	478	<b>429</b>	1818
	F	419	448	426	<b>417</b>	1710
Chickenpox	M	61	57	73	<b>74</b>	265
	F	64	56	57	<b>54</b>	231
Hand, foot, and mouth disease	M	1		4	<b>4</b>	9
	F	1	1	2	<b>6</b>	10
Erythema infectiosum	M	5	5	11	<b>10</b>	31
	F	9	5	4	<b>5</b>	23
Exanthem subitum	M	20	24	30	<b>39</b>	113
	F	26	37	31	<b>32</b>	126
Pertussis	M		1			1
	F					
Rubella	M	1	3	1	<b>1</b>	6
	F		1	1	<b>3</b>	5
Herpangina	M		1	2	<b>1</b>	4
	F	2	2	1	<b>1</b>	6
Measles	M	2	5	4	<b>1</b>	12
	F	2	8	6	<b>8</b>	24
Mumps	M	16	16	11	<b>22</b>	65
	F	9	13	6	<b>15</b>	43
Cold with exanthems by Enterovirus	M	8		5	<b>5</b>	18
	F	4	3		<b>6</b>	13
Mucocutaneous Lymphnode Syndrome	M					
	F			1	<b>1</b>	2
Acute hemorrhagic conjunctivitis	M	1	1	1		3
	F				<b>1</b>	1
Epidemic keratoconjunctivitis	M	4	5	4	<b>6</b>	19
	F	3	5	4		12
Acute encephalitis (excluding Japanese encephalitis)	M					
	F					
Bacterial meningitis	M					
	F					
Aseptic meningitis	M					
	F			1	<b>1</b>	2
Mycoplasma pneumonia	M		1	4		5
	F			4		4
Chlamydial pneumonia (excluding psittacosis)	M					
	F					
Measles in adults	M	1	2	3		6
	F	1	3	4	<b>2</b>	10

( Blank means 0. )

# Disease Trend Graph (weekly reported cases per fixed-point in comparison)







Tokyo Metropolitan Government  
**Infectious Disease Surveillance Center**

