

INFECTIOUS DISEASES WEEKLY REPORT

TOKYO IDWR

Tokyo Metropolitan Research Laboratory of Public Health

6 May 2003 / Number 17

- Number of patients with the diseases required notifying all the cases
- Number of patients with the diseases to be reported by the designated clinics and hospitals
- Disease trend graph (weekly reported cases per fixed-point in comparison)

Surveillance System in Tokyo, Japan

The diseases which all physicians must report

All physicians must report to health centers the incidence of the diseases which are shown at page one. Health centers electronically report the individual case to Tokyo Metropolitan Infectious Disease Surveillance Center.

Fixed-point surveillance

The numbers of patients who visit designated clinics or hospitals during a week are reported to health centers (There are 37 in Tokyo). And they electronically report the numbers to Tokyo Metropolitan Infectious Disease Surveillance Center. We have about 200 fixed points (clinics and hospitals) in Tokyo.

1st Week is early January and 52nd Week is end of December.

Tokyo Metropolitan Infectious Disease Surveillance Center
Tokyo Metropolitan Research Laboratory of Public Health

TEL:81-3-3363-3213 FAX:81-3-5332-7365

e-mail: idsc@tokyo-eiken.go.jp

URL: idsc.tokyo-eiken.go.jp/

Number of patients with the diseases which all physicians must report

Category	Diseases	Tokyo					Japan	
		14th	15th	16th	17th	Total	17th	Total
I	Ebola hemorrhagic fever							
	Crimean-Congo hemorrhagic fever							
	Plague							
	Marburg disease							
	Lassa fever							
II	Cholera					2		8
	Shigellosis	1	1			27	3	156
	Typhoid fever			1		8	1	24
	Paratyphoid fever					2		10
	Acute poliomyelitis							
	Diphtheria							
III	Enterohemorrhagic <i>Escherichia coli</i> infection		2	1		12	6	147
IV	Amebiasis		2	5	2	34	6	155
	Echinococcosis							9
	Yellow fever							
	Psittacosis							17
	Relapsing fever							
	Acute viral hepatitis	2	2		1	35	4	295
	Q fever					1		3
	Rabies							
	Cryptosporidiosis							1
	Creutzfeldt-Jakob Disease			1		3	3	37
	Sever invasive streptococcal infections				1	3		27
	Acquired immunodeficiency syndrome	10	4	7	10	108	5	272
	Coccidioidomycosis							
	Giardiasis				3	9	5	20
	Hemorrhagic fever with renal syndrome							
	Meningococcal meningitis					2		10
	Congenital rubella syndrome							
	Anthrax							
	Scrub typhus (Tsutsugamushi disease)						3	38
	Dengue fever					3		11
	Japanese spotted fever							
	Japanese encephalitis							
	Infant botulism							
	Syphilis			3	1	24	8	149
	Tetanus					2		21
	Vancomycin-resistant <i>enterococcus</i> infection					1		21
	Hantavirus pulmonary syndrome							
	Helpes B virus infection							
	Brucellosis							
	Epidemic typhus							
Malaria	2		1		8	1	23	
Lyme disease								
Legionellosis					6	3	42	
West Nile fever								

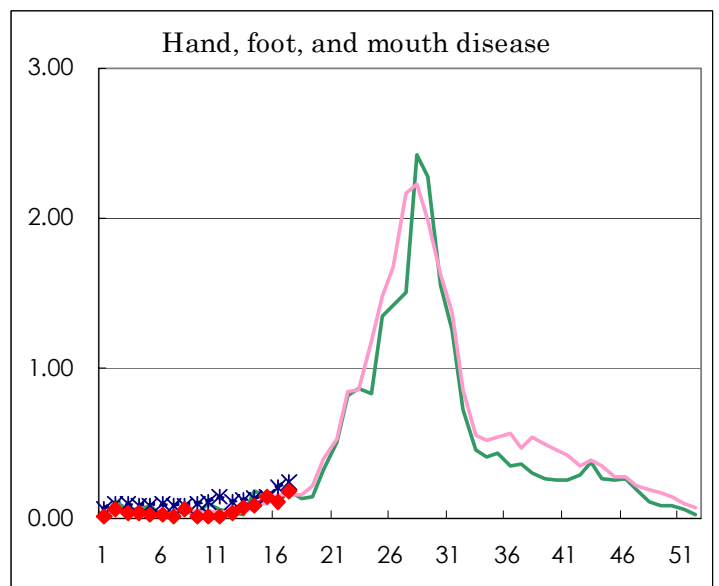
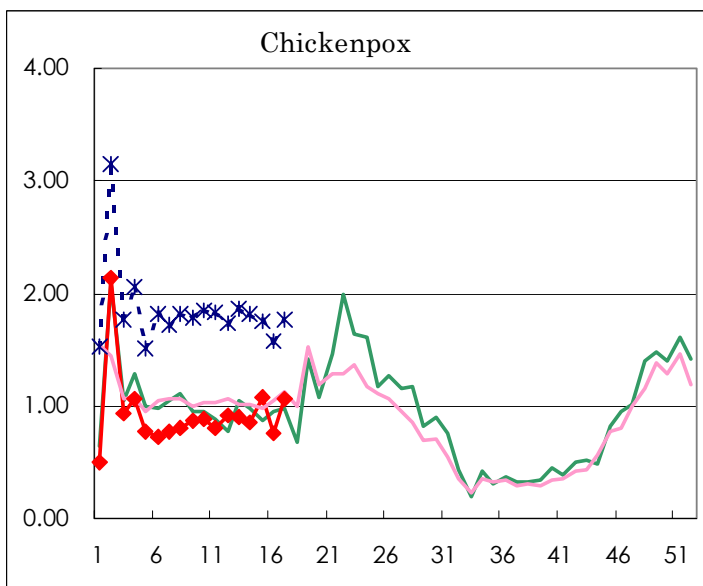
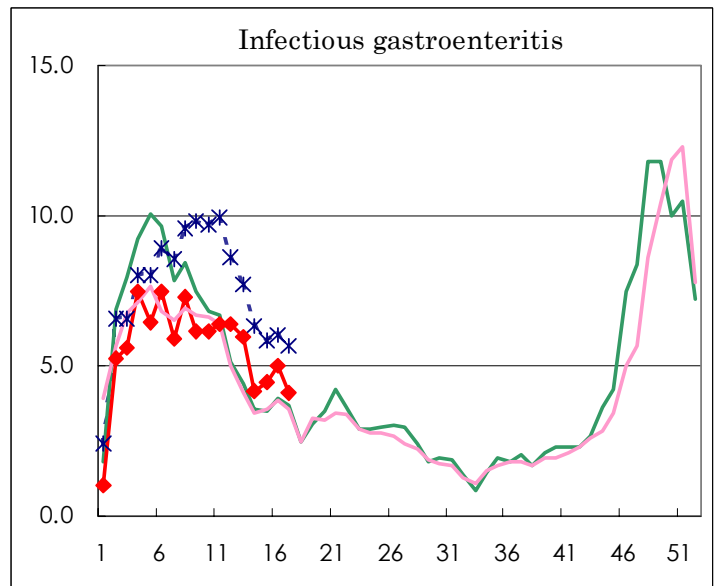
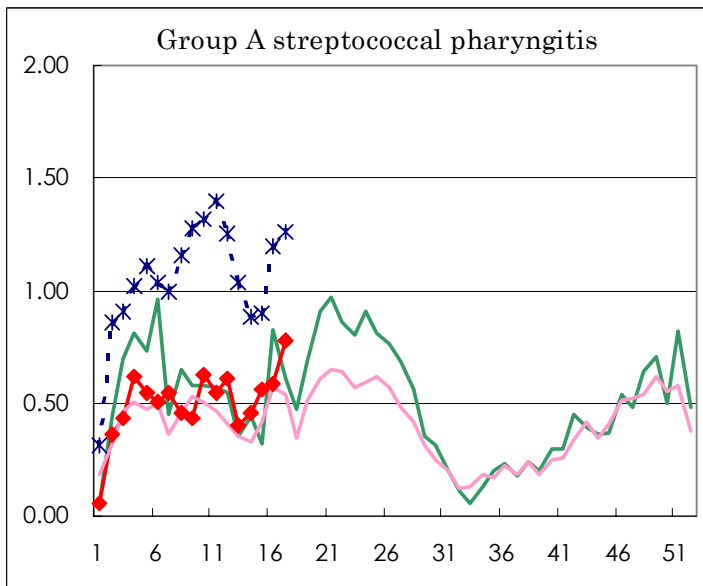
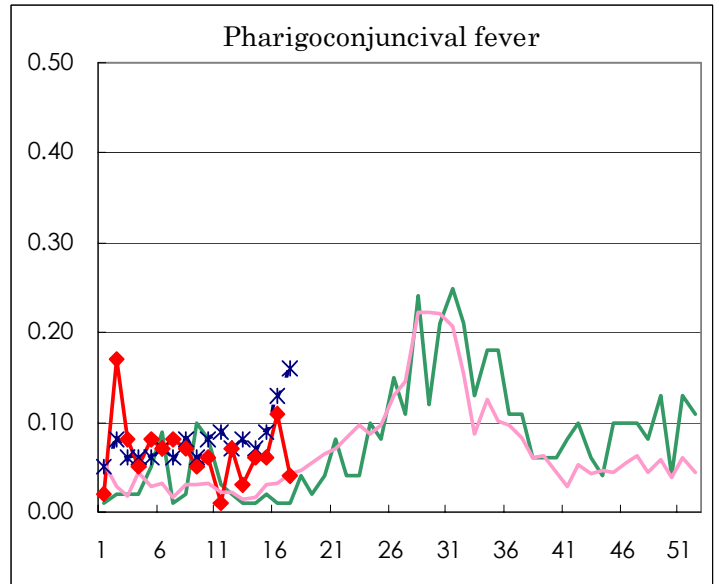
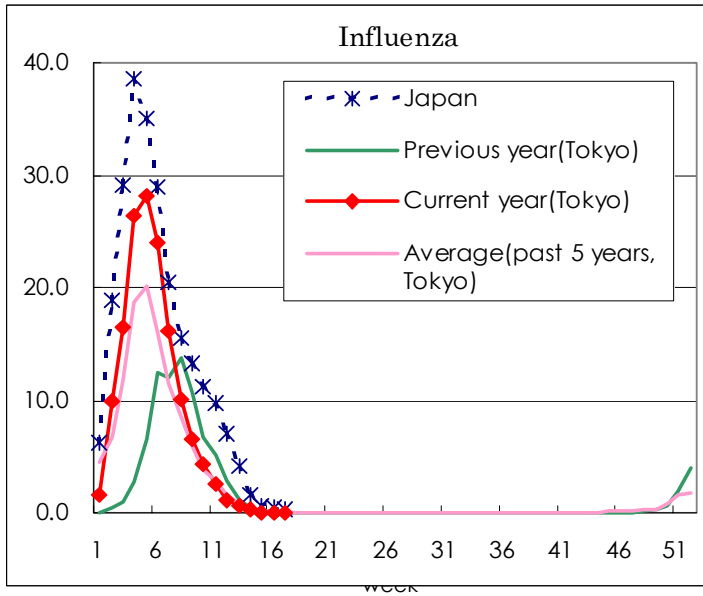
(Blank means 0.)

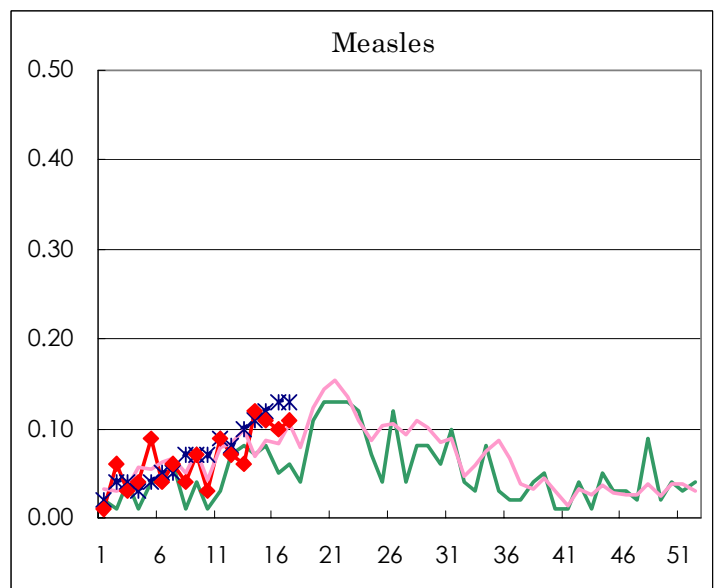
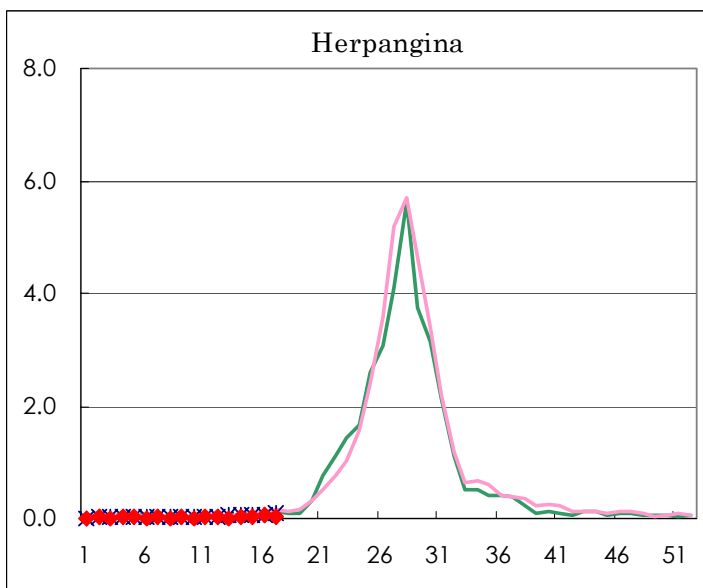
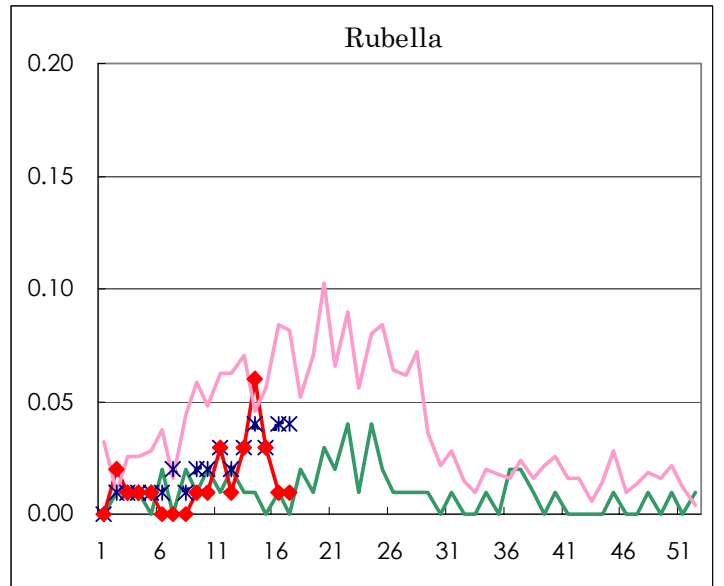
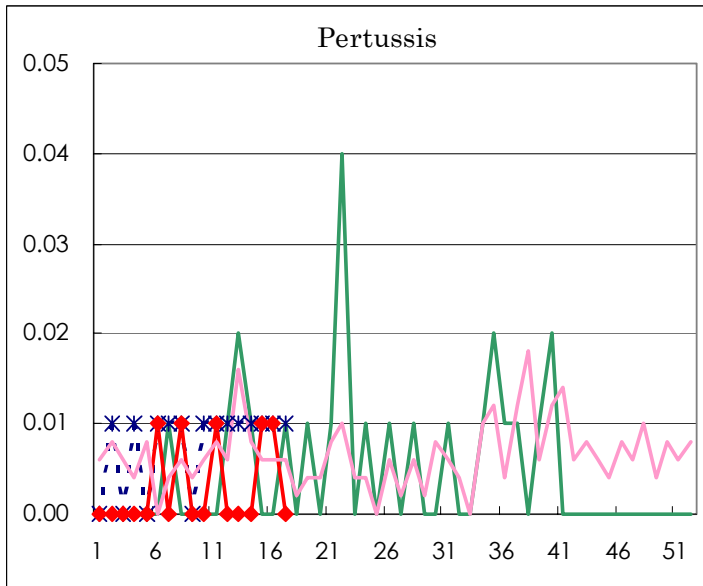
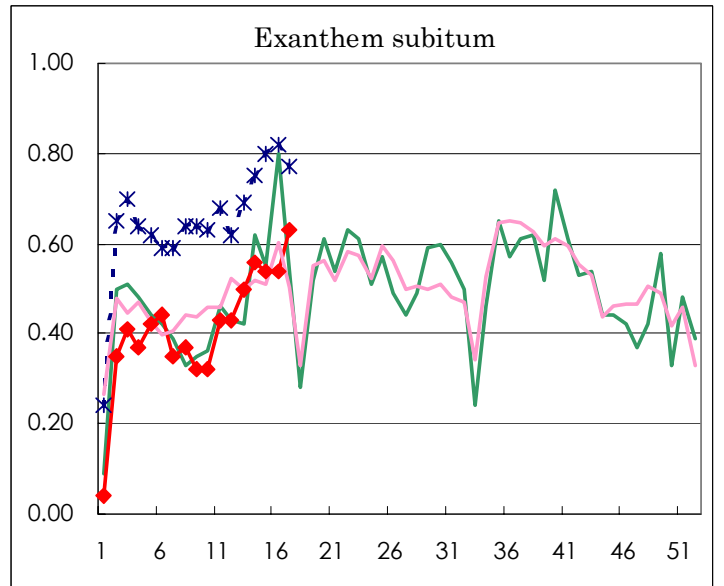
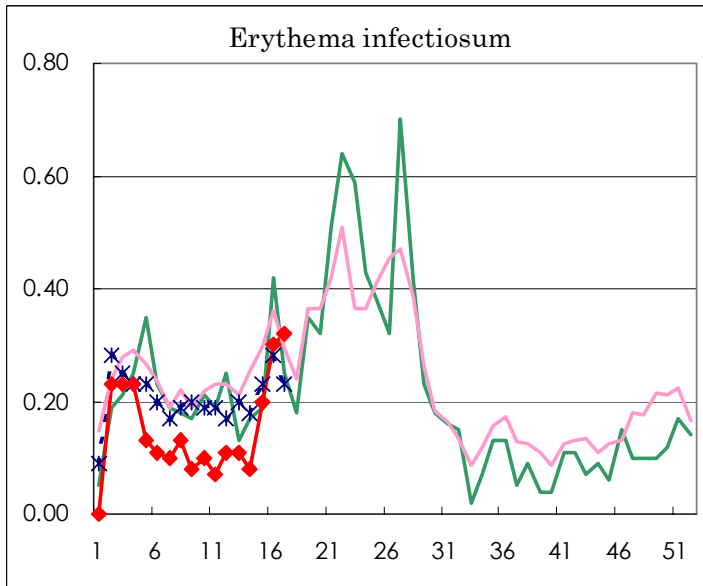
Number of patients with the diseases to be reported
by the designated clinics and hospitals

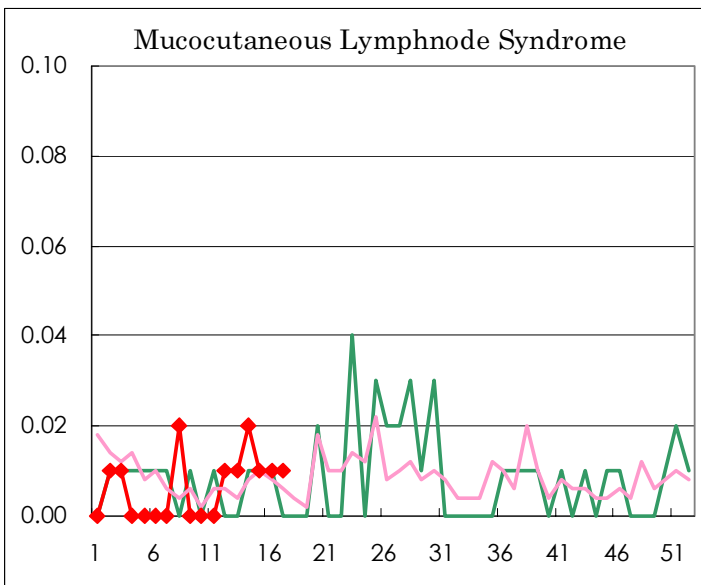
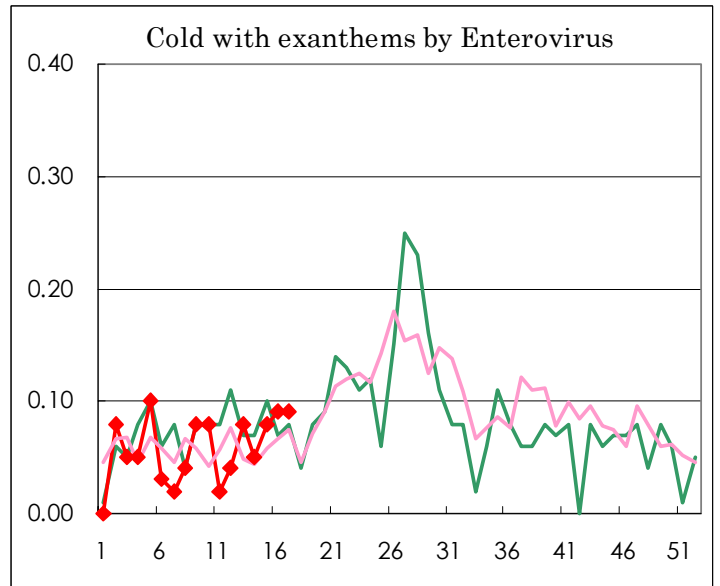
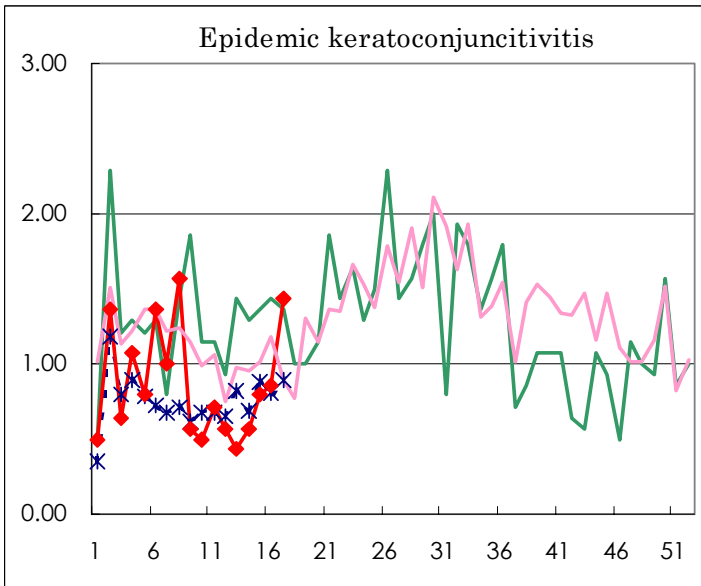
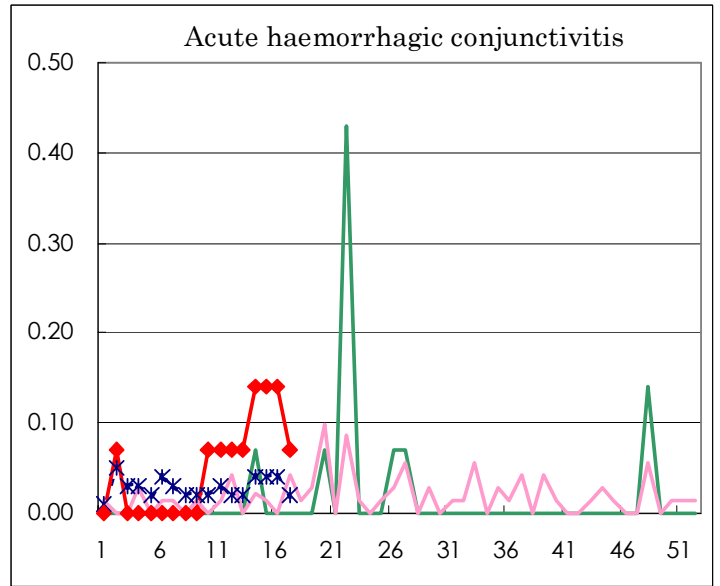
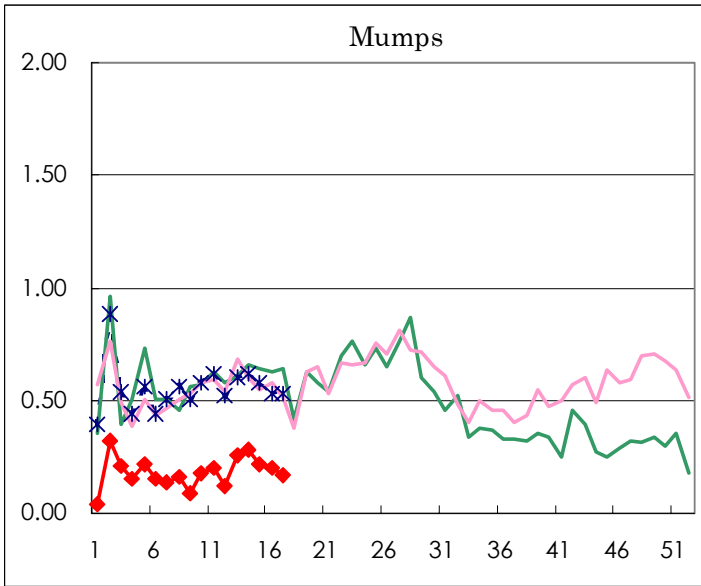
Diseases	Sex	Week(2003)				Total
		14th	15th	16th	17th	
Influenza	M	23	4	3	4	34
	F	37	7	4	3	51
Pharygoconjunctival fever	M	3	3	9	2	17
	F	5	5	7	4	21
Group A streptococcal pharyngitis	M	29	40	45	69	183
	F	36	40	39	42	157
Infectious gastroenteritis	M	319	319	344	324	1306
	F	273	311	368	260	1212
Chickenpox	M	59	82	45	95	281
	F	62	72	62	56	252
Hand, foot, and mouth disease	M	7	6	9	16	38
	F	5	14	6	9	34
Erythema infectiosum	M	5	16	17	24	62
	F	7	13	25	21	66
Exanthem subitum	M	39	38	43	37	157
	F	40	39	34	52	165
Pertussis	M		1	1		2
	F					
Rubella	M	3	3	1	1	8
	F	5	1	1		7
Herpangina	M	3	1	5	3	12
	F	1	5	5	2	13
Measles	M	10	7	6	6	29
	F	7	8	8	10	33
Mumps	M	27	22	18	15	82
	F	13	9	10	9	41
Cold with exanthems by Enterovirus	M	2	8	4	3	17
	F	5	4	9	10	28
Mucocutaneous Lymphnode Syndrome	M	1	1	1		3
	F	2			1	3
Acute hemorrhagic conjunctivitis	M	1	1	1	1	4
	F	1	1	1		3
Epidemic keratoconjunctivitis	M	5	9	7	12	33
	F	3	2	5	8	18
Acute encephalitis (excluding Japanese encephalitis)	M					
	F					
Bacterial meningitis	M	1				1
	F		2			2
Aseptic meningitis	M		1			1
	F		1			1
Mycoplasma pneumonia	M	1	2	2	1	6
	F	2	1	1		4
Chlamydial pneumonia (excluding psittacosis)	M					
	F					
Measles in adults	M	3	1	6	5	15
	F	5	3	4	3	15

(Blank means 0.)

Disease Trend Graph (weekly reported cases per fixed-point in comparison)







Tokyo Metropolitan Government
Infectious Disease Surveillance Center

