

INFECTIOUS DISEASES WEEKLY REPORT

TOKYO IDWR

Tokyo Metropolitan Research Laboratory of Public Health

3 June 2003 / Number 21

- Number of patients with the diseases required notifying all the cases
- Number of patients with the diseases to be reported by the designated clinics and hospitals
- Disease trend graph (weekly reported cases per fixed-point in comparison)

Surveillance System in Tokyo, Japan

The diseases which all physicians must report

All physicians must report to health centers the incidence of the diseases which are shown at page one. Health centers electronically report the individual case to Tokyo Metropolitan Infectious Disease Surveillance Center.

Fixed-point surveillance

The numbers of patients who visit designated clinics or hospitals during a week are reported to health centers (There are 37 in Tokyo). And they electronically report the numbers to Tokyo Metropolitan Infectious Disease Surveillance Center. We have about 200 fixed points (clinics and hospitals) in Tokyo.

1st Week is early January and 52nd Week is end of December.

Tokyo Metropolitan Infectious Disease Surveillance Center
Tokyo Metropolitan Research Laboratory of Public Health

TEL:81-3-3363-3213 FAX:81-3-5332-7365
e-mail: idsc@tokyo-eiken.go.jp
URL: idsc.tokyo-eiken.go.jp/

Number of patients with the diseases which all physicians must report

Category	Diseases	Tokyo					Japan	
		18th	19th	20th	21st	Total	21st	Total
I	Ebola hemorrhagic fever							
	Crimean-Congo hemorrhagic fever							
	Plague							
	Marburg disease							
	Lassa fever							
II	Cholera					2		8
	Shigellosis	3	4	2	2	38	5	183
	Typhoid fever	1				9		27
	Paratyphoid fever					2	1	13
	Acute poliomyelitis							
	Diphtheria							
III	Enterohemorrhagic <i>Escherichia coli</i> infection			2	3	15	65	282
IV	Amebiasis	2	1	3	2	42	4	190
	Echinococcosis							11
	Yellow fever							
	Psittacosis						2	20
	Relapsing fever							
	Acute viral hepatitis	2	1	2	3	43	5	383
	Q fever					1		3
	Rabies							
	Cryptosporidiosis							1
	Creutzfeldt-Jakob Disease				1	4	1	43
	Sever invasive streptococcal infections					3		28
	Acquired immunodeficiency syndrome	6	7	9	6	136	5	335
	Coccidioidomycosis							1
	Giardiasis		1	2	2	14	1	29
	Hemorrhagic fever with renal syndrome							
	Meningococcal meningitis					2		10
	Congenital rubella syndrome							1
	Anthrax							
	Scrub typhus (Tsutsugamushi disease)						15	75
	Dengue fever					3		11
	Japanese spotted fever						2	4
	Japanese encephalitis							
	Infant botulism							
	Syphilis	3	1	1	2	31	8	181
	Tetanus	1				3		24
	Vancomycin-resistant <i>enterococcus</i> infection					1		26
	Hantavirus pulmonary syndrome							
	Helpes B virus infection							
	Brucellosis							
	Epidemic typhus							
Malaria			1	3	12	3	33	
Lyme disease								
Legionellosis	1				7		47	
West Nile fever								

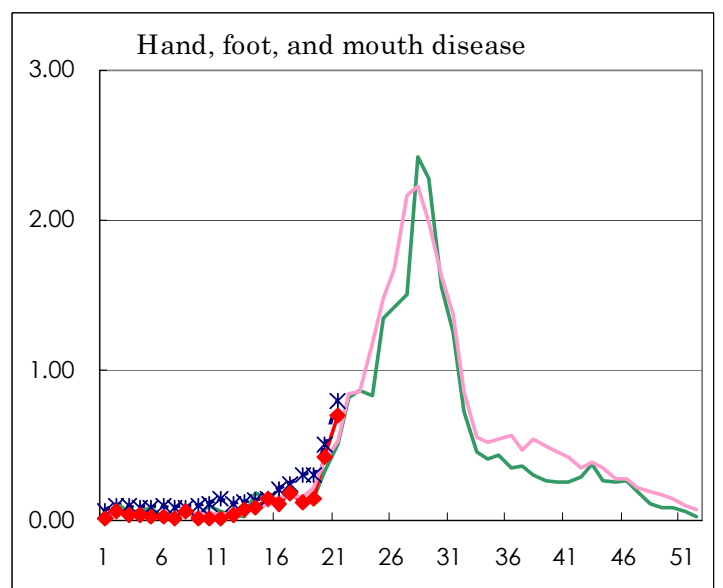
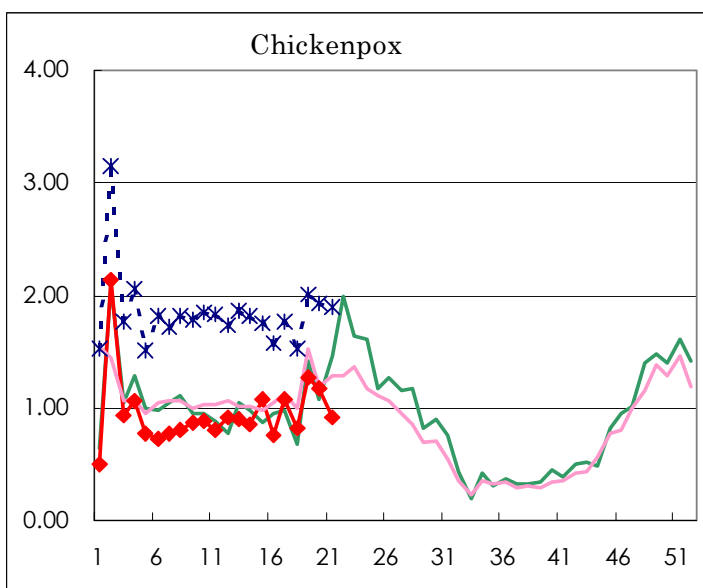
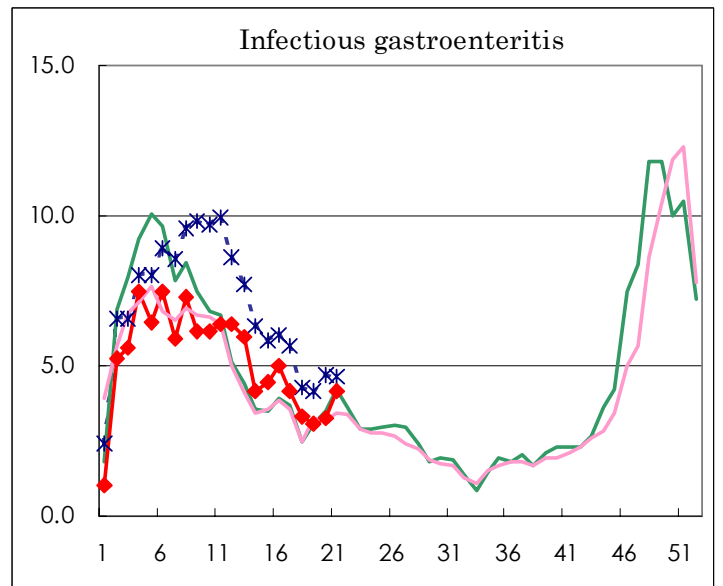
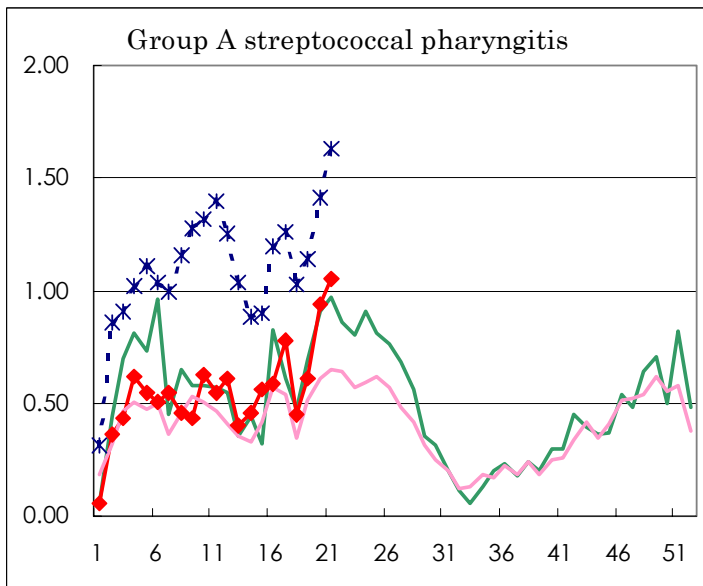
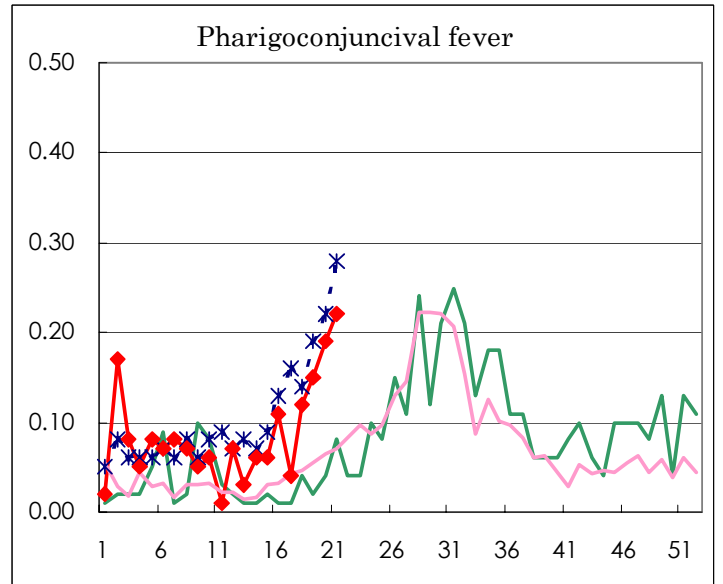
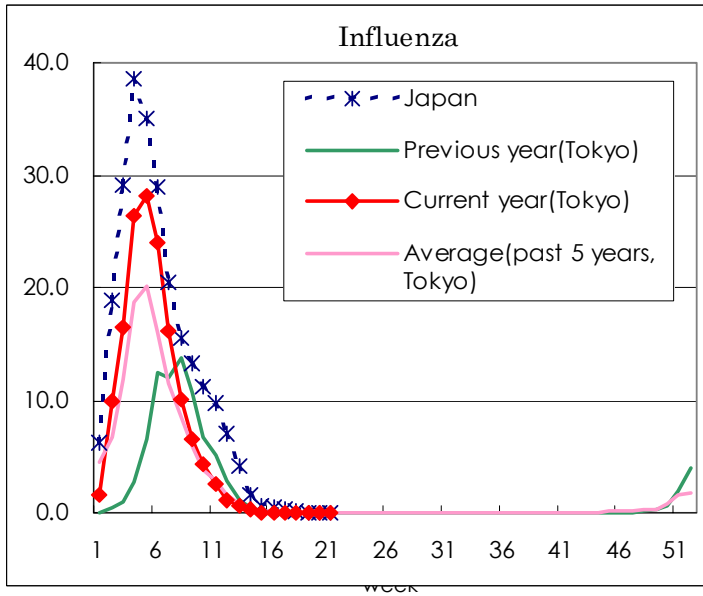
(Blank means 0.)

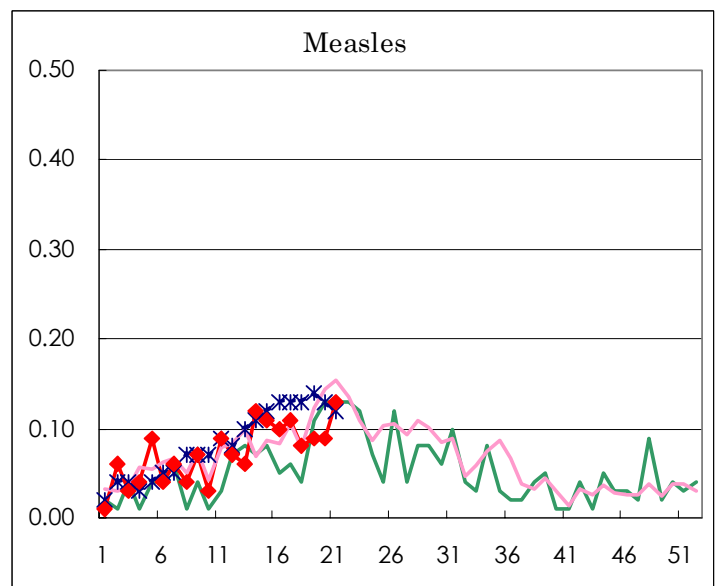
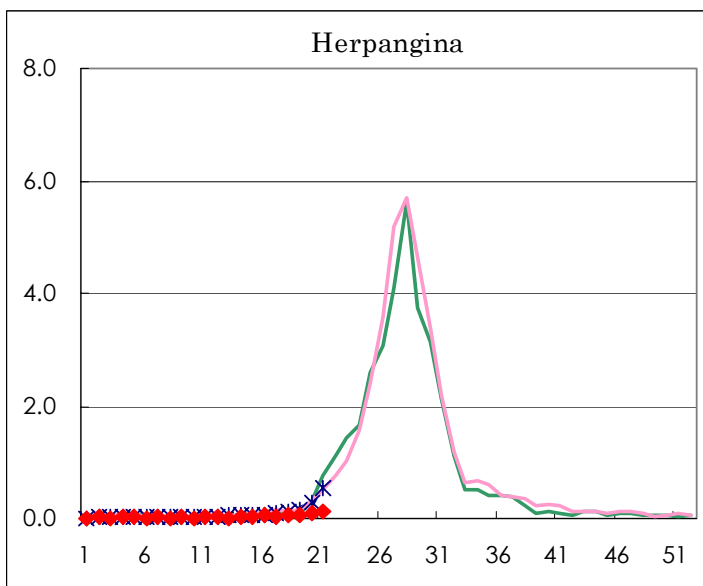
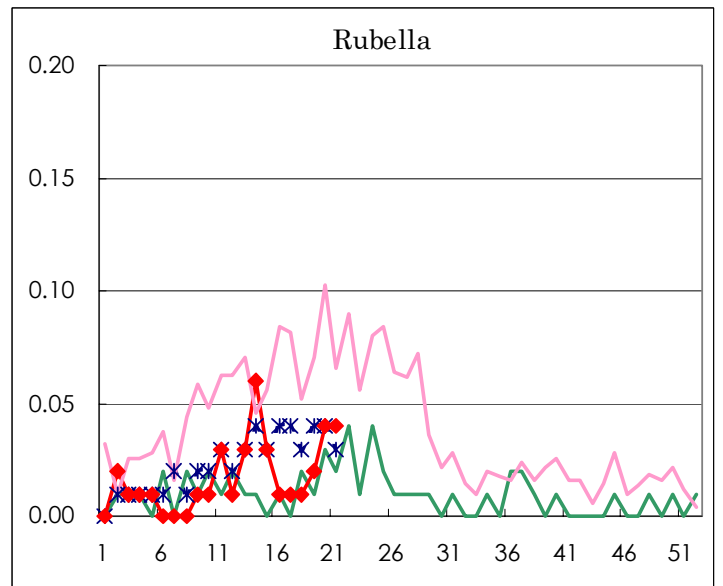
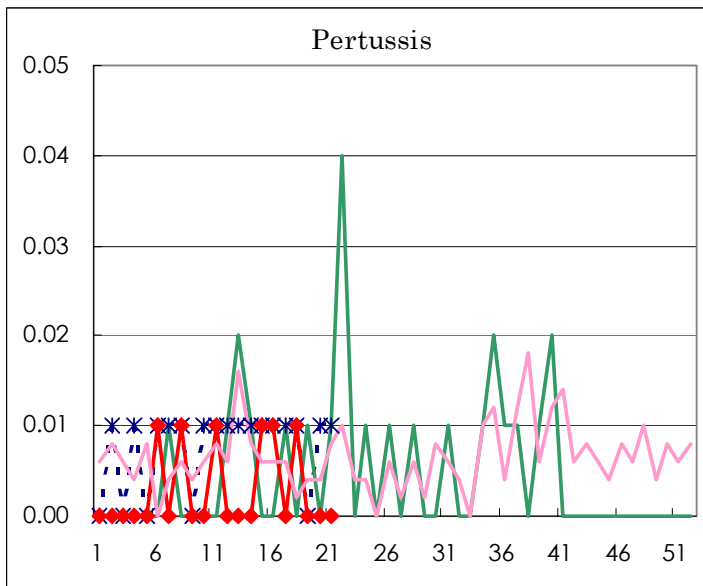
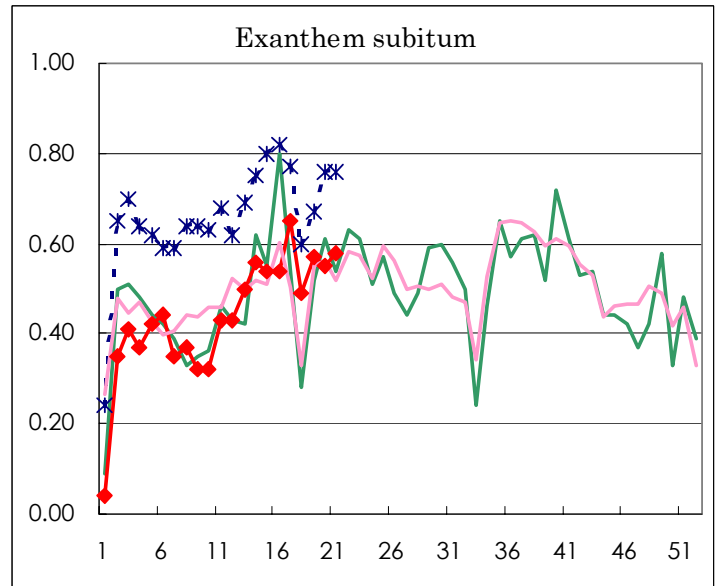
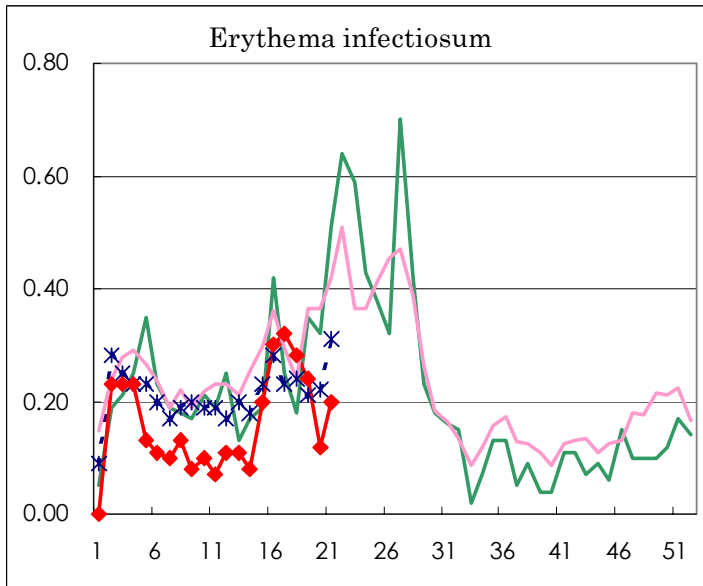
Number of patients with the diseases to be reported
by the designated clinics and hospitals

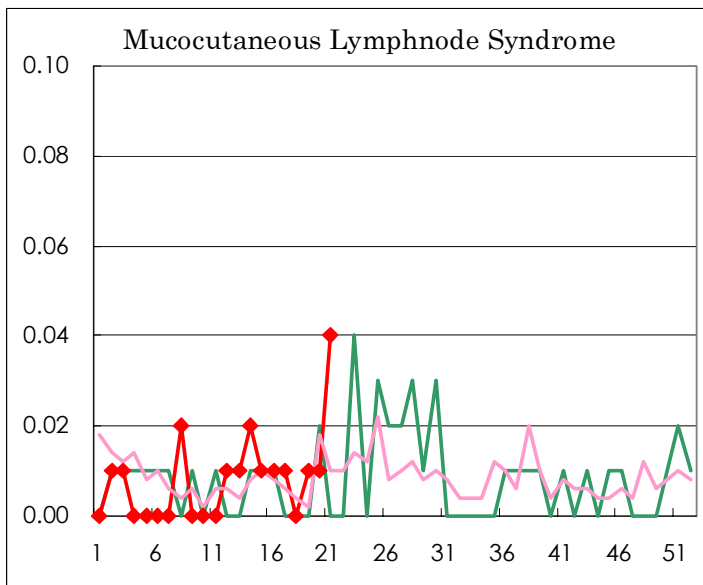
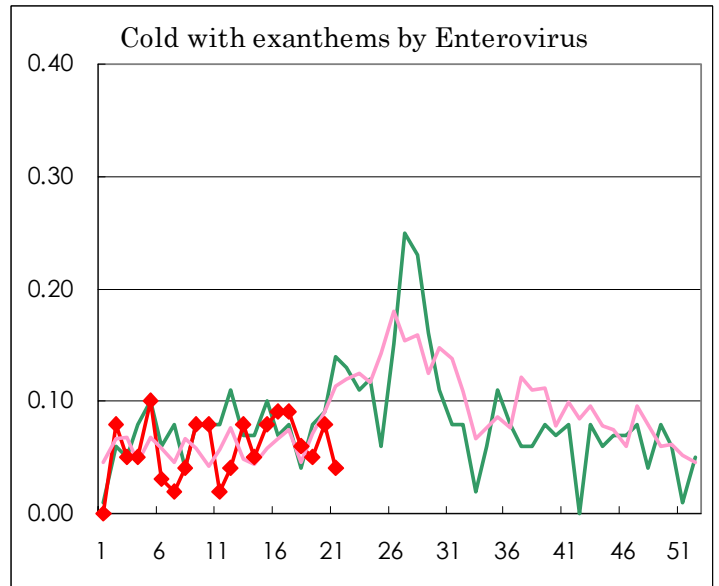
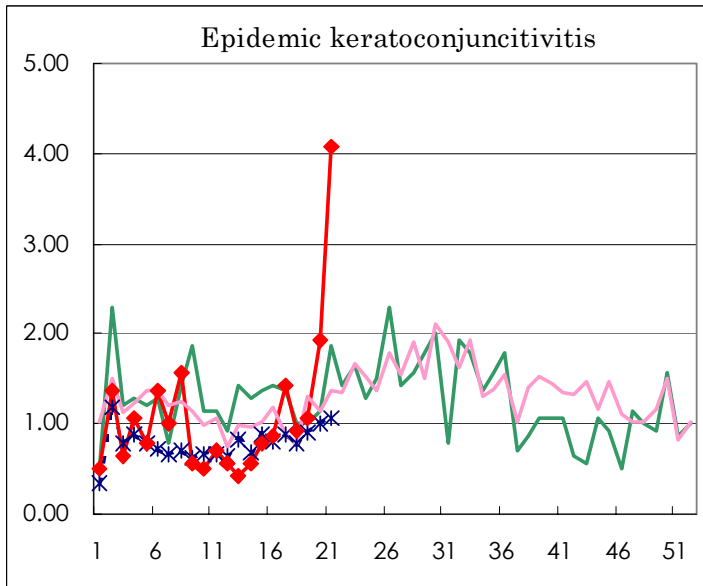
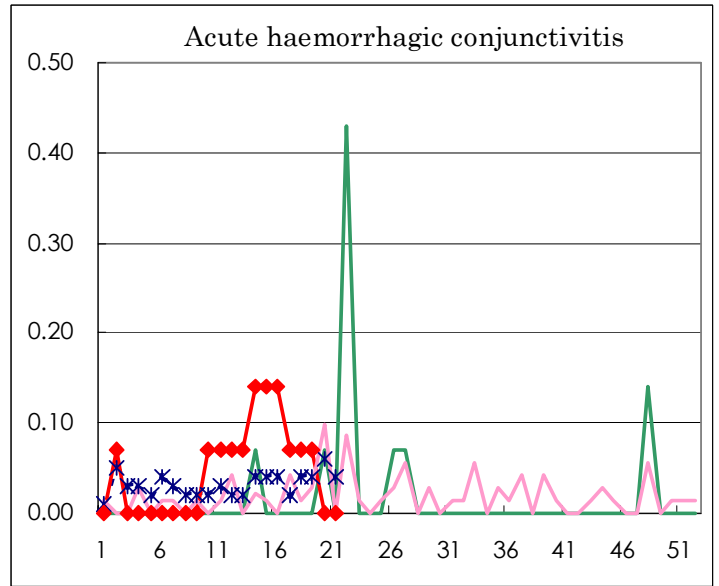
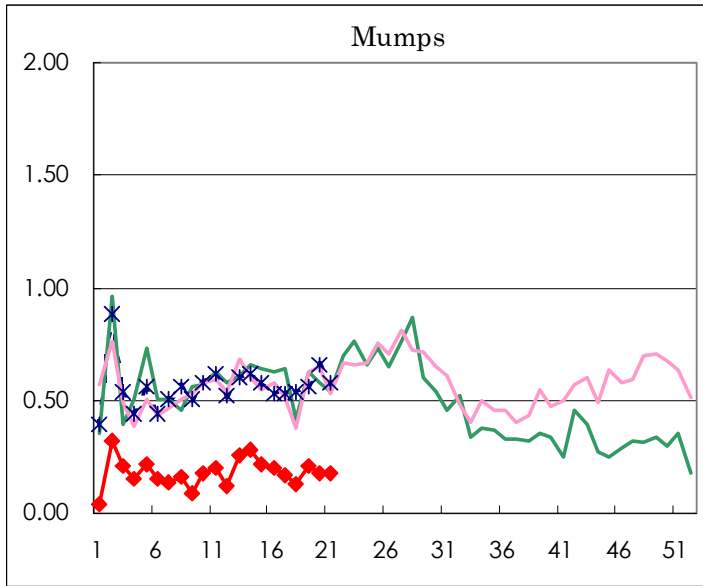
Diseases	Sex	Week(2003)				Total
		18th	19th	20th	21st	
Influenza	M					
	F					
Pharygoconjunctival fever	M	9	11	16	16	52
	F	8	10	11	15	44
Group A streptococcal pharyngitis	M	43	45	66	80	234
	F	32	42	67	69	210
Infectious gastroenteritis	M	255	251	216	319	1041
	F	212	186	243	267	908
Chickenpox	M	56	94	93	66	309
	F	61	86	73	65	285
Hand, foot, and mouth disease	M	10	8	32	49	99
	F	7	14	28	51	100
Erythema infectiosum	M	18	15	8	17	58
	F	22	19	9	12	62
Exanthem subitum	M	34	41	47	37	159
	F	37	40	31	46	154
Pertussis	M	1				1
	F					
Rubella	M	1	1	3	2	7
	F		2	3	3	8
Herpangina	M	4	6	9	11	30
	F	3	5	7	7	22
Measles	M	6	5	7	13	31
	F	4	8	6	6	24
Mumps	M	12	16	17	12	57
	F	9	14	8	14	45
Cold with exanthems by Enterovirus	M	6	4	9	1	20
	F	4	5	2	5	16
Mucocutaneous Lymphnode Syndrome	M			1	1	2
	F		1	1	4	6
Acute hemorrhagic conjunctivitis	M					
	F	1	1			2
Epidemic keratoconjunctivitis	M	8	10	15	27	60
	F	5	5	12	30	52
Acute encephalitis (excluding Japanese encephalitis)	M					
	F					
Bacterial meningitis	M	1			1	2
	F			1		1
Aseptic meningitis	M			1		1
	F	1				1
Mycoplasma pneumonia	M	2	1		1	4
	F	4	1	1	2	8
Chlamydial pneumonia (excluding psittacosis)	M					
	F					
Measles in adults	M	3		4		7
	F	1		3	4	8

(Blank means 0.)

Disease Trend Graph (weekly reported cases per fixed-point in comparison)







Tokyo Metropolitan Government
 Infectious Disease Surveillance Center

