

INFECTIOUS DISEASES WEEKLY REPORT

# TOKYO IDWR

Tokyo Metropolitan Research Laboratory of Public Health

1 July 2003 / Number 25

- Number of patients with the diseases required notifying all the cases
- Number of patients with the diseases to be reported by the designated clinics and hospitals
- Disease trend graph (weekly reported cases per fixed-point in comparison)

## Surveillance System in Tokyo, Japan

### The diseases which all physicians must report

All physicians must report to health centers the incidence of the diseases which are shown at page one. Health centers electronically report the individual case to Tokyo Metropolitan Infectious Disease Surveillance Center.

### Fixed-point surveillance

The numbers of patients who visit designated clinics or hospitals during a week are reported to health centers ( There are 37 in Tokyo). And they electronically report the numbers to Tokyo Metropolitan Infectious Disease Surveillance Center. We have about 200 fixed points (clinics and hospitals) in Tokyo.

1<sup>st</sup> Week is early January and 52<sup>nd</sup> Week is end of December.

Tokyo Metropolitan Infectious Disease Surveillance Center  
Tokyo Metropolitan Research Laboratory of Public Health

TEL:81-3-3363-3213 FAX:81-3-5332-7365

e-mail: [idsc@tokyo-eiken.go.jp](mailto:idsc@tokyo-eiken.go.jp)

URL: [idsc.tokyo-eiken.go.jp/](http://idsc.tokyo-eiken.go.jp/)

## Number of patients with the diseases which all physicians must report

Category	Diseases	Tokyo					Japan	
		22nd	23rd	24th	25th	Total	25th	Total
I	Ebola hemorrhagic fever							
	Crimean-Congo hemorrhagic fever							
	Plague							
	Marburg disease							
	Lassa fever							
II	Cholera					2		9
	Shigellosis	1	3	5		47	4	205
	Typhoid fever	1			1	11	2	31
	Paratyphoid fever		1			3	1	18
	Acute poliomyelitis							
	Diphtheria							
III	Enterohemorrhagic <i>Escherichia coli</i> infection	15	11	1	3	47	49	545
IV	Amebiasis	5	6	2	5	60	5	236
	Echinococcosis							11
	Yellow fever							
	Psittacosis							27
	Relapsing fever							
	Acute viral hepatitis				4	46	2	429
	Q fever					1		4
	Rabies							
	Cryptosporidiosis							1
	Creutzfeldt-Jakob Disease	1			1	6	4	54
	Sever invasive streptococcal infections				1	4		34
	Acquired immunodeficiency syndrome	3	3	5	2	149	6	391
	Coccidioidomycosis							1
	Giardiasis	2	1	1	2	20	6	47
	Hemorrhagic fever with renal syndrome							
	Meningococcal meningitis	1				3		12
	Congenital rubella syndrome							1
	Anthrax							
	Scrub typhus (Tsutsugamushi disease)						6	120
	Dengue fever	1		1	1	6	2	16
	Japanese spotted fever						1	9
	Japanese encephalitis							
	Infant botulism							
	Syphilis	2	2	2	1	38	5	222
	Tetanus					3		31
	Vancomycin-resistant <i>enterococcus</i> infection			1		2		34
	Hantavirus pulmonary syndrome							
	Helpes B virus infection							
	Brucellosis							
	Epidemic typhus							
Malaria				1	13	2	36	
Lyme disease							2	
Legionellosis					7	1	55	
West Nile fever								

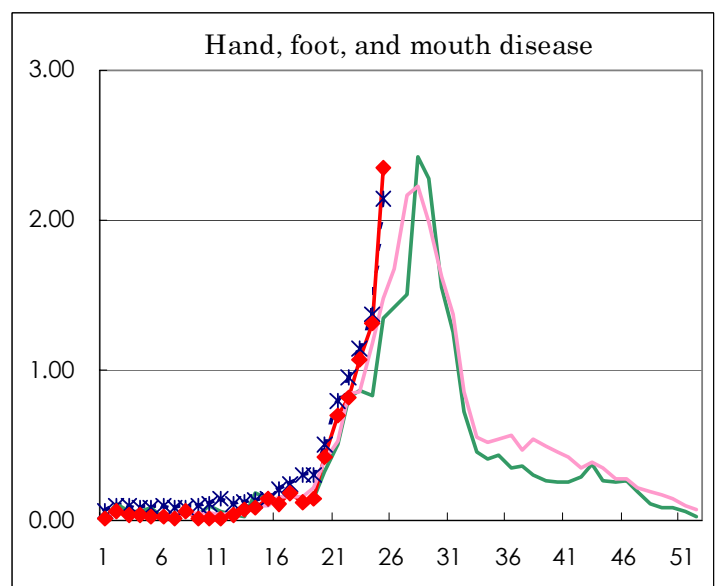
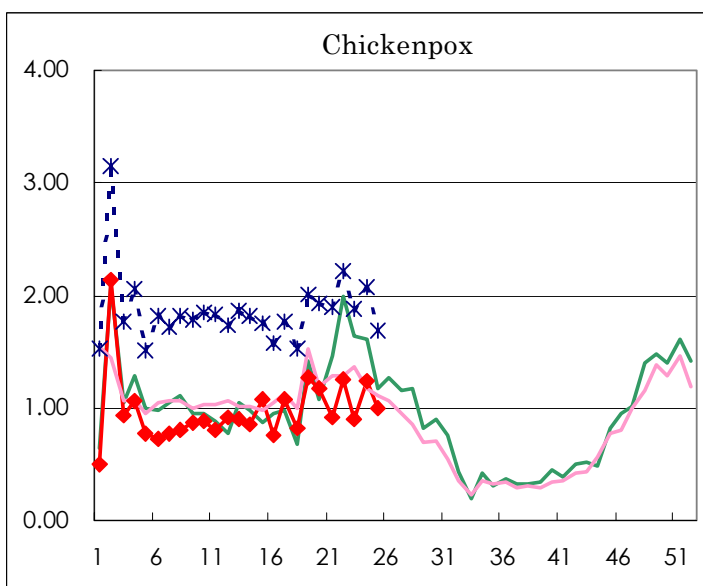
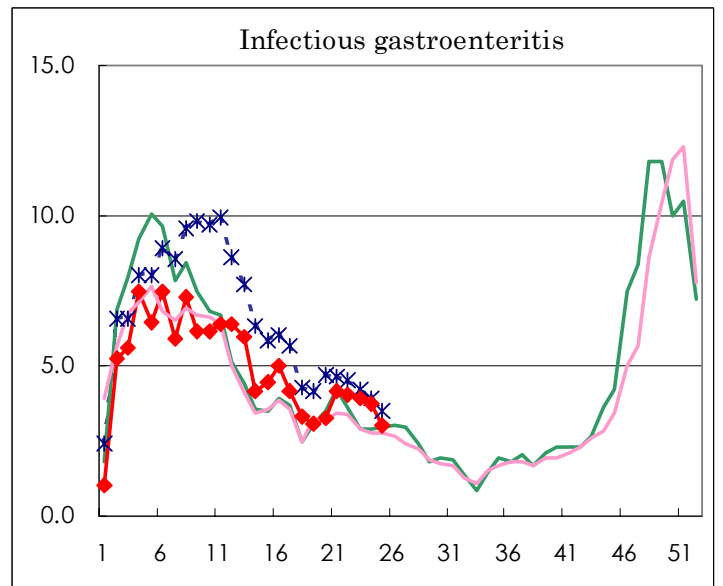
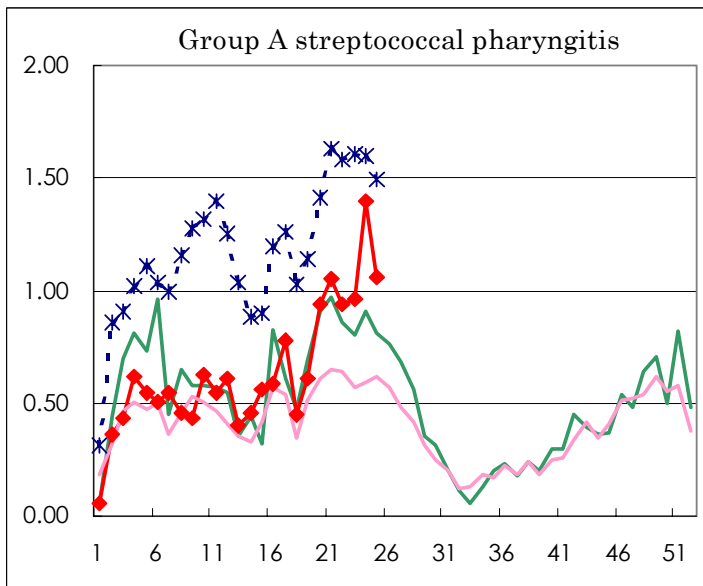
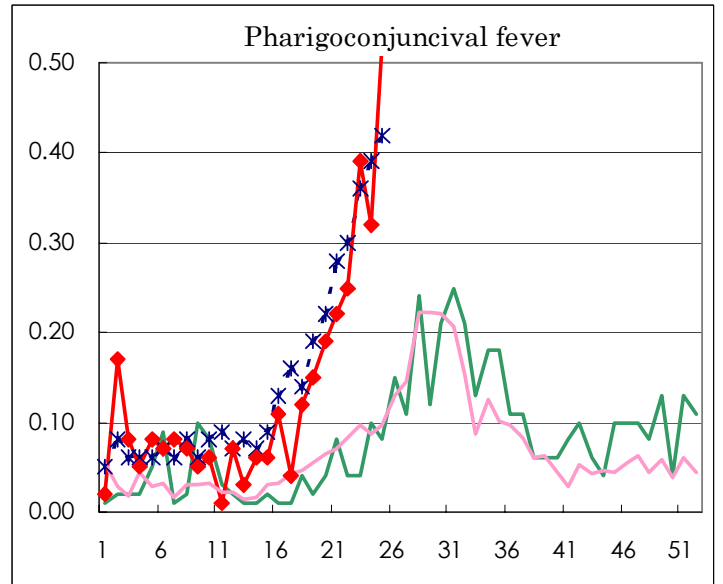
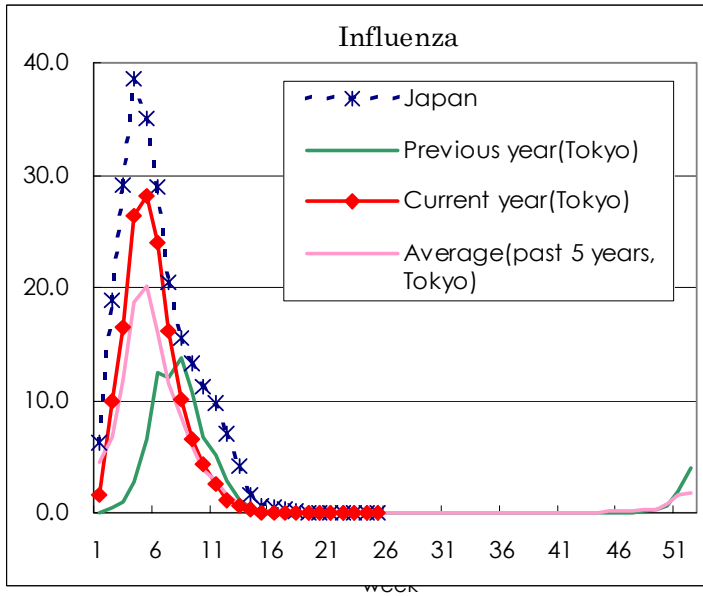
( Blank means 0. )

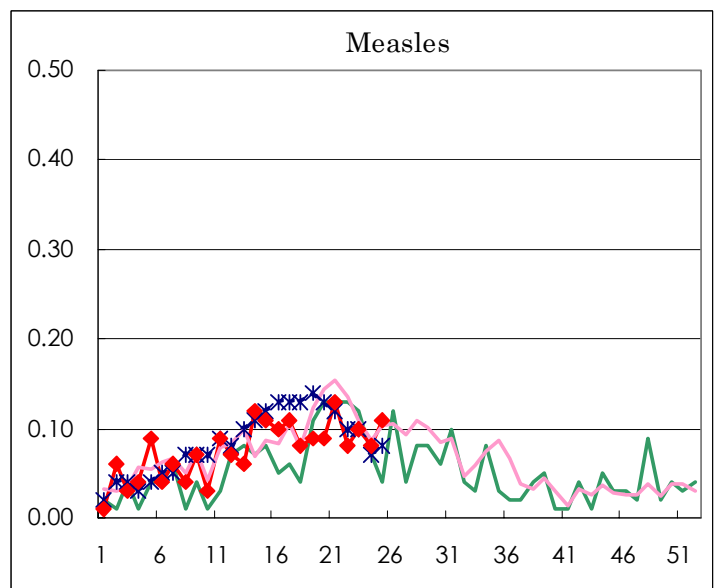
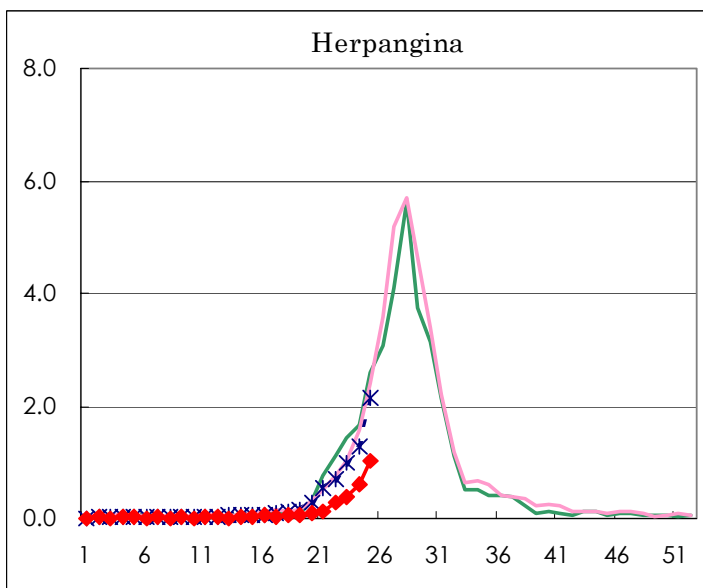
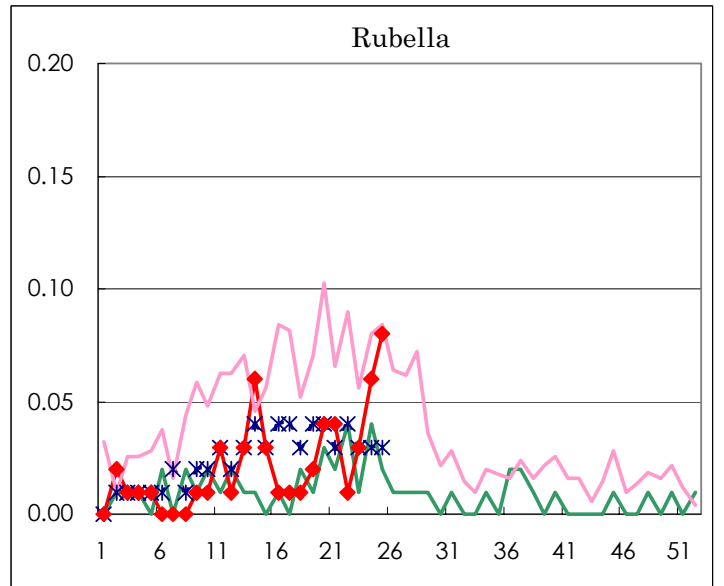
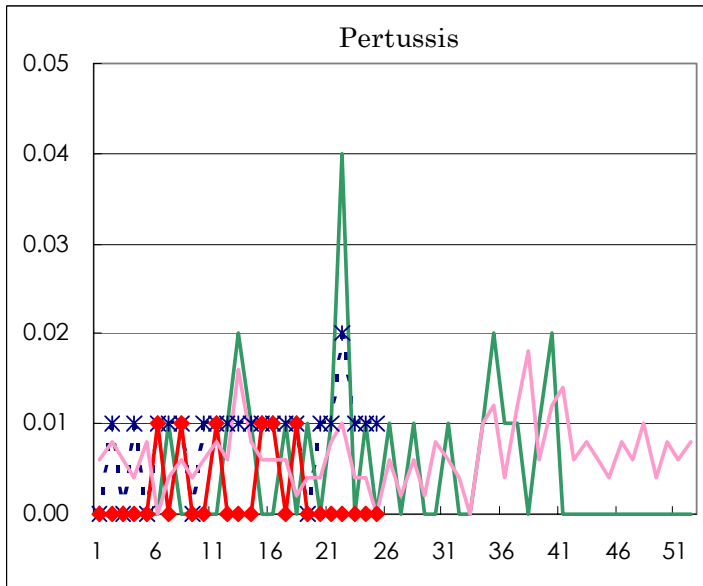
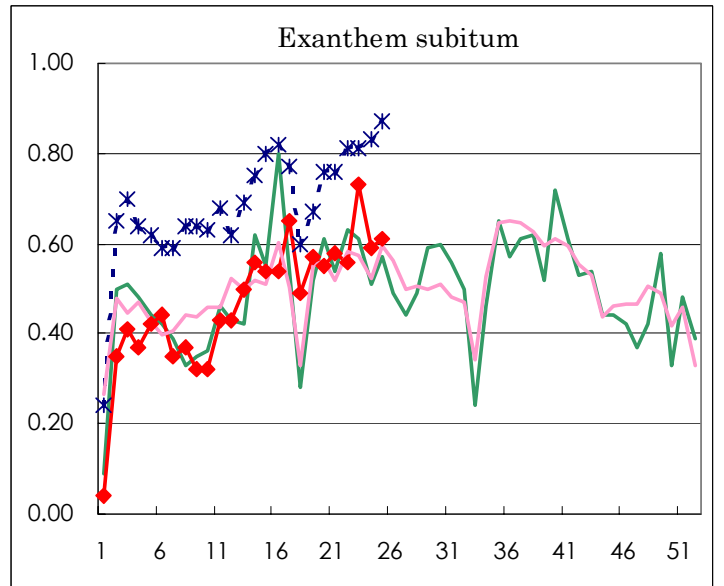
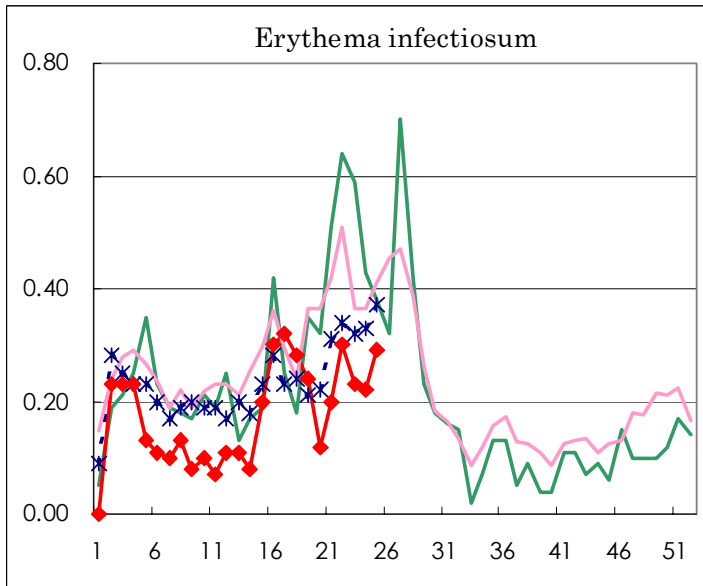
Number of patients with the diseases to be reported  
by the designated clinics and hospitals

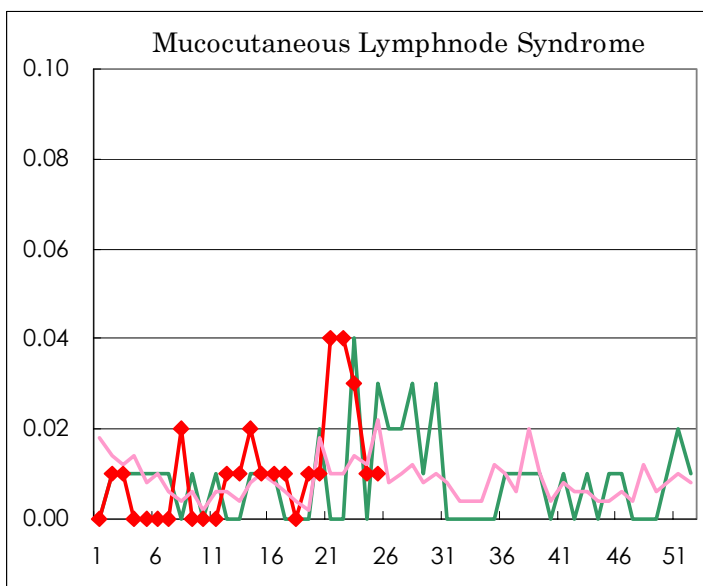
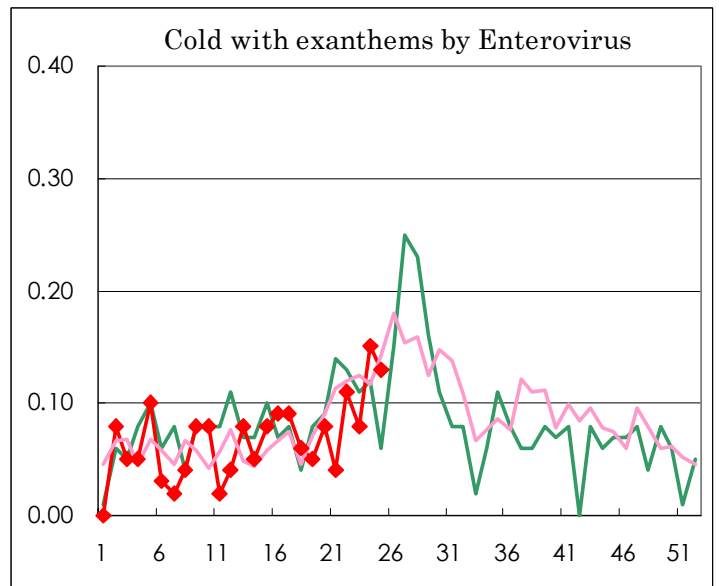
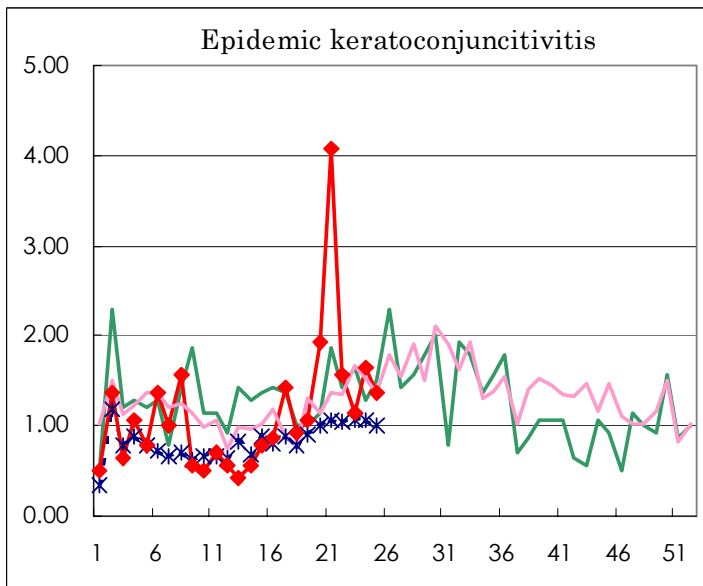
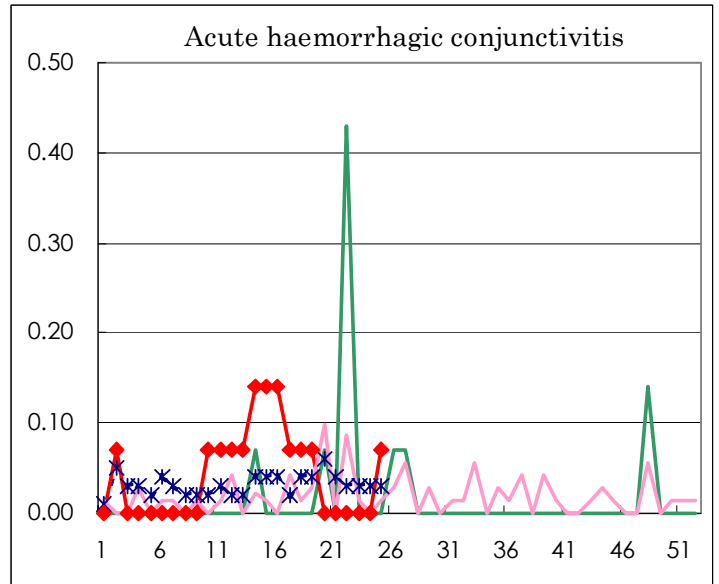
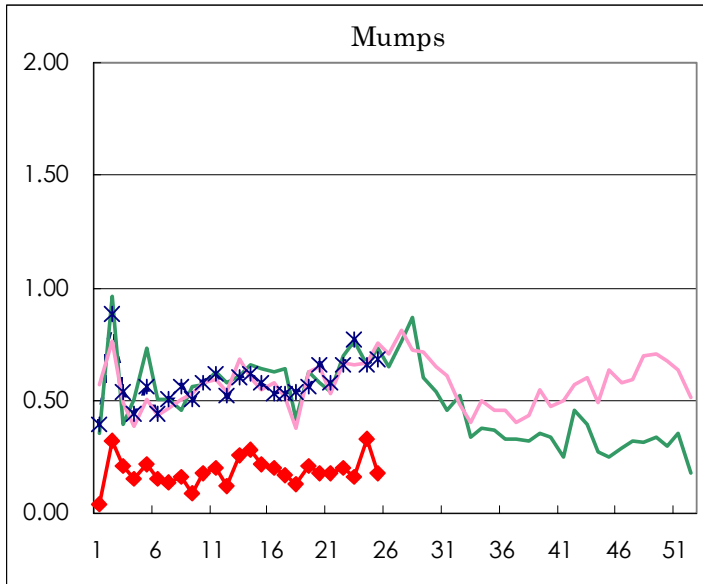
Diseases	Sex	Week(2003)				Total
		22nd	23rd	24th	25th	
Influenza	M			1		1
	F	1				1
Pharygoconjunctival fever	M	17	31	31	37	116
	F	19	25	15	37	96
Group A streptococcal pharyngitis	M	69	76	85	72	302
	F	65	60	63	79	267
Infectious gastroenteritis	M	308	278	290	229	1105
	F	267	274	242	196	979
Chickenpox	M	85	79	93	83	340
	F	92	49	83	59	283
Hand, foot, and mouth disease	M	55	85	105	201	446
	F	62	67	81	132	342
Erythema infectiosum	M	25	15	15	17	72
	F	18	18	16	24	76
Exanthem subitum	M	36	43	36	37	152
	F	43	60	48	50	201
Pertussis	M					
	F					
Rubella	M	1	2	6	6	15
	F		2	2	6	10
Herpangina	M	24	26	53	80	183
	F	19	30	35	66	150
Measles	M	6	7	6	6	25
	F	5	7	5	9	26
Mumps	M	14	15	23	13	65
	F	15	8	24	12	59
Cold with exanthems by Enterovirus	M	8	9	15	7	39
	F	8	3	7	11	29
Mucocutaneous Lymphnode Syndrome	M	3	2		2	7
	F	2	2	1		5
Acute hemorrhagic conjunctivitis	M				1	1
	F					
Epidemic keratoconjunctivitis	M	13	10	10	13	46
	F	9	6	13	6	34
Acute encephalitis (excluding Japanese encephalitis)	M					
	F					
Bacterial meningitis	M		1			1
	F					
Aseptic meningitis	M		1		1	2
	F					
Mycoplasma pneumonia	M	2		1	2	5
	F				1	1
Chlamydial pneumonia (excluding psittacosis)	M					
	F					
Measles in adults	M	1	1	6	4	12
	F	1			3	4

( Blank means 0. )

# Disease Trend Graph (weekly reported cases per fixed-point in comparison)







Tokyo Metropolitan Government  
**Infectious Disease Surveillance Center**

