

INFECTIOUS DISEASES WEEKLY REPORT

TOKYO IDWR

Tokyo Metropolitan Research Laboratory of Public Health

15 July 2003 / Number 27

- Number of patients with the diseases required notifying all the cases
- Number of patients with the diseases to be reported by the designated clinics and hospitals
- Disease trend graph (weekly reported cases per fixed-point in comparison)

Surveillance System in Tokyo, Japan

The diseases which all physicians must report

All physicians must report to health centers the incidence of the diseases which are shown at page one. Health centers electronically report the individual case to Tokyo Metropolitan Infectious Disease Surveillance Center.

Fixed-point surveillance

The numbers of patients who visit designated clinics or hospitals during a week are reported to health centers (There are 37 in Tokyo). And they electronically report the numbers to Tokyo Metropolitan Infectious Disease Surveillance Center. We have about 200 fixed points (clinics and hospitals) in Tokyo.

1st Week is early January and 52nd Week is end of December.

Tokyo Metropolitan Infectious Disease Surveillance Center
Tokyo Metropolitan Research Laboratory of Public Health

TEL:81-3-3363-3213 FAX:81-3-5332-7365

e-mail: idsc@tokyo-eiken.go.jp

URL: idsc.tokyo-eiken.go.jp/

Number of patients with the diseases which all physicians must report

Category	Diseases	Tokyo					Japan	
		24th	25th	26th	27th	Total	27th	Total
I	Ebola hemorrhagic fever							
	Crimean-Congo hemorrhagic fever							
	Plague							
	Marburg disease							
	Lassa fever							
II	Cholera					2		9
	Shigellosis	5				47	6	216
	Typhoid fever		1	2		13		33
	Paratyphoid fever					3		19
	Acute poliomyelitis							
	Diphtheria							
III	Enterohemorrhagic <i>Escherichia coli</i> infection	1	3	7	7	61	82	700
IV	Amebiasis	2	5	2	3	65	6	262
	Echinococcosis							11
	Yellow fever							
	Psittacosis						2	31
	Relapsing fever							
	Acute viral hepatitis		4	1	1	48	4	450
	Q fever					1	1	5
	Rabies							
	Cryptosporidiosis			1		1		2
	Creutzfeldt-Jakob Disease		1		1	7		58
	Sever invasive streptococcal infections		1			4	1	37
	Acquired immunodeficiency syndrome	5	2	6	7	162	9	427
	Coccidioidomycosis							1
	Giardiasis	1	2			20	1	50
	Hemorrhagic fever with renal syndrome							
	Meningococcal meningitis					3		12
	Congenital rubella syndrome							1
	Anthrax							
	Scrub typhus (Tsutsugamushi disease)						1	130
	Dengue fever	1	1		1	7	1	17
	Japanese spotted fever							11
	Japanese encephalitis							
	Infant botulism							
	Syphilis	2	1		1	39	9	243
	Tetanus					3		32
	Vancomycin-resistant <i>enterococcus</i> infection	1				2		36
	Hantavirus pulmonary syndrome							
	Helpes B virus infection							
	Brucellosis							1
	Epidemic typhus							
Malaria		1	1	1	15		40	
Lyme disease							2	
Legionellosis					7	2	58	
West Nile fever								

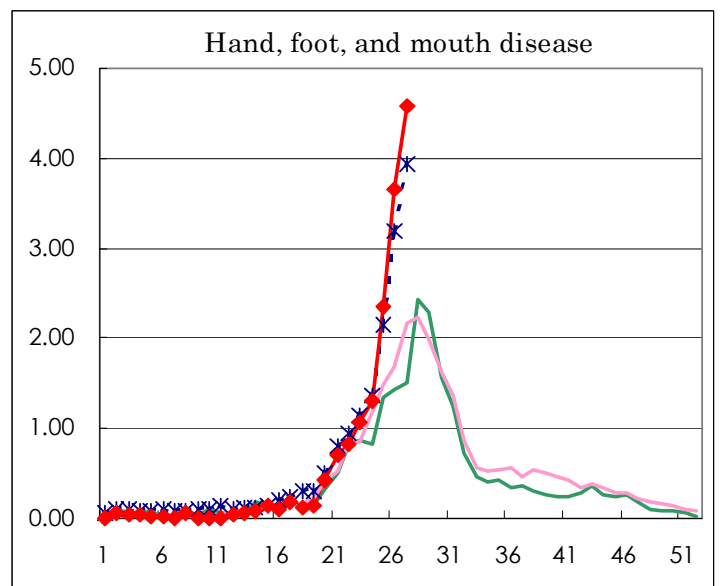
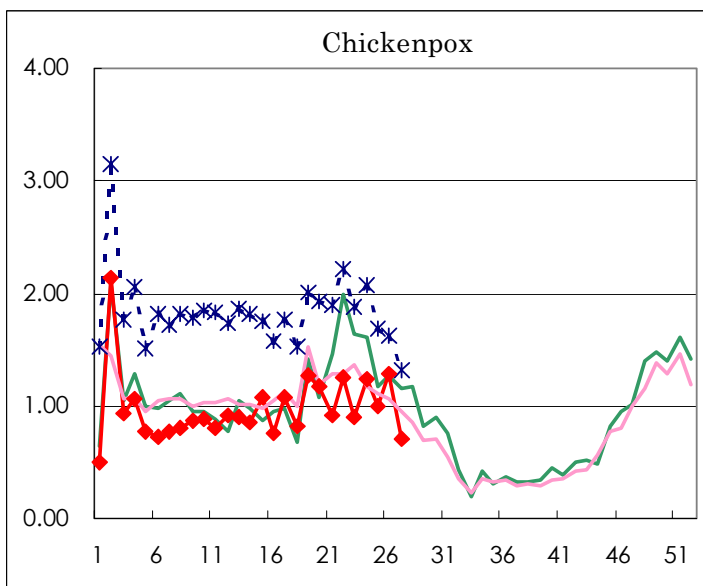
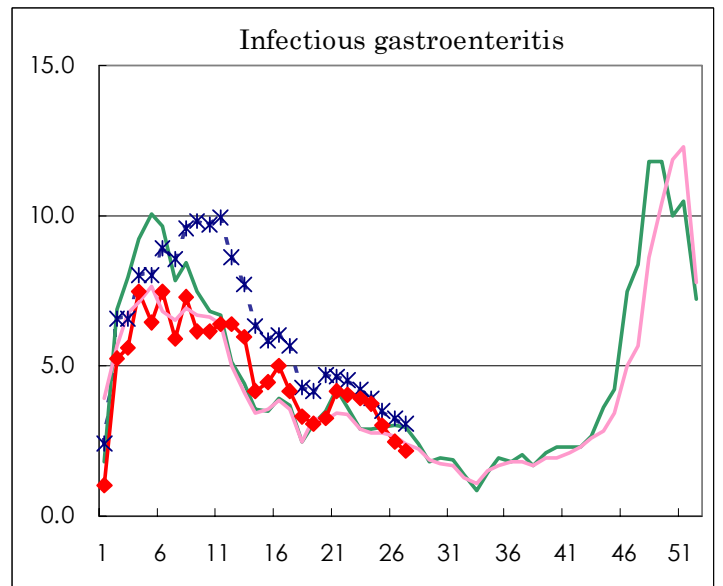
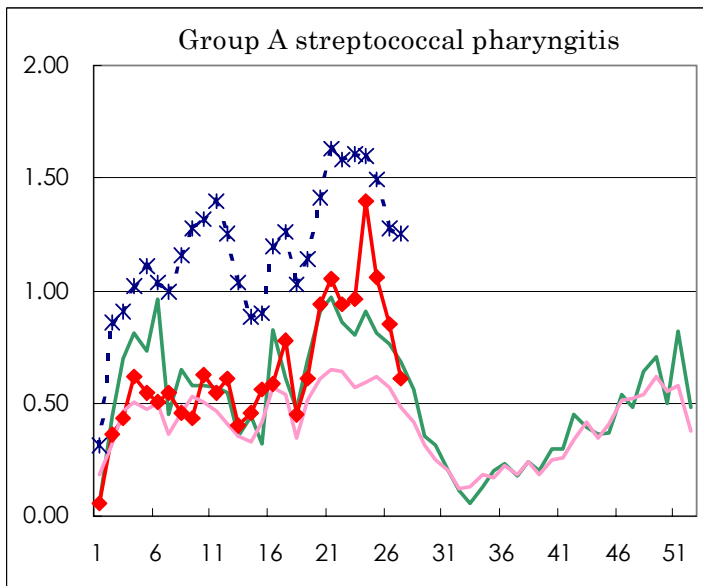
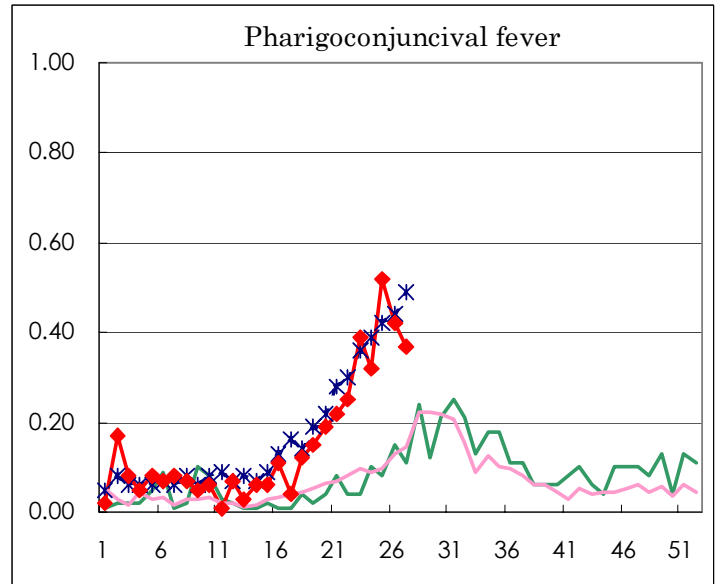
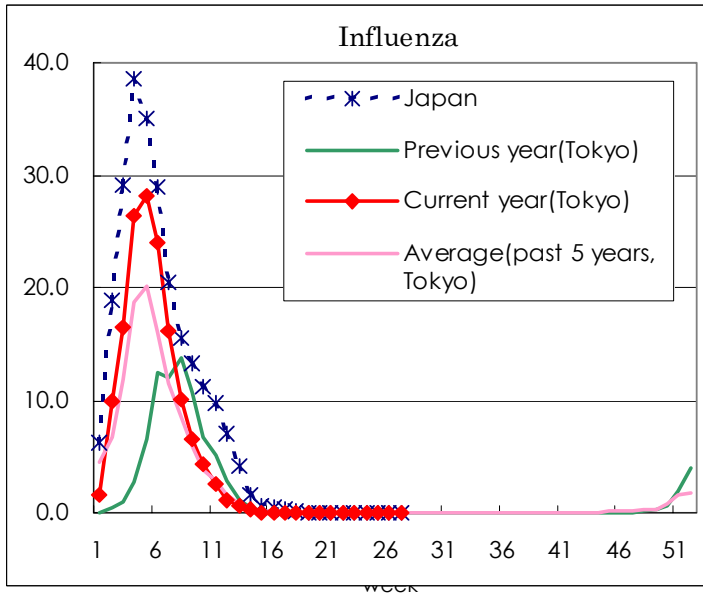
(Blank means 0.)

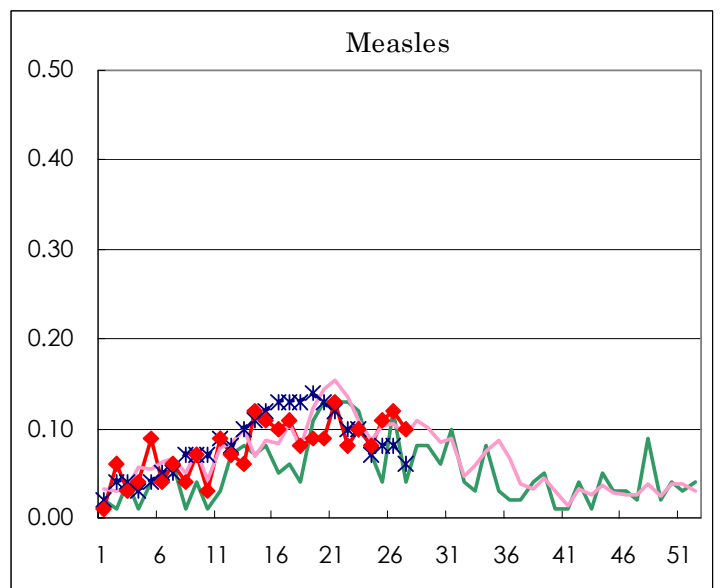
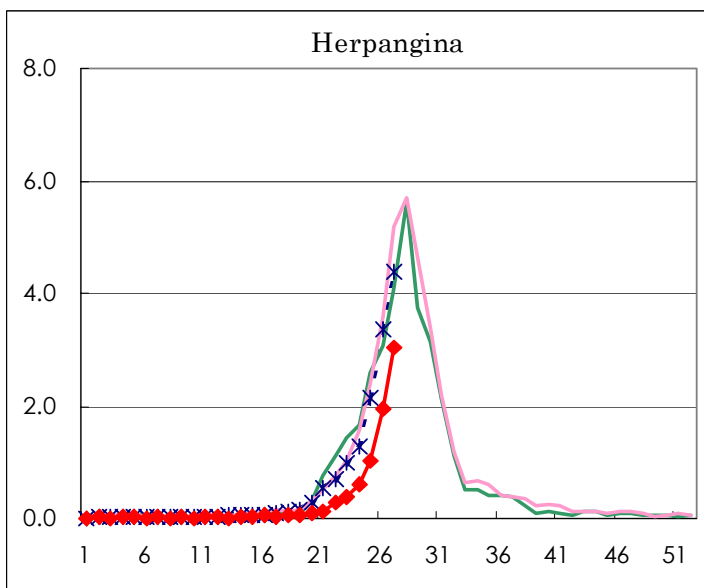
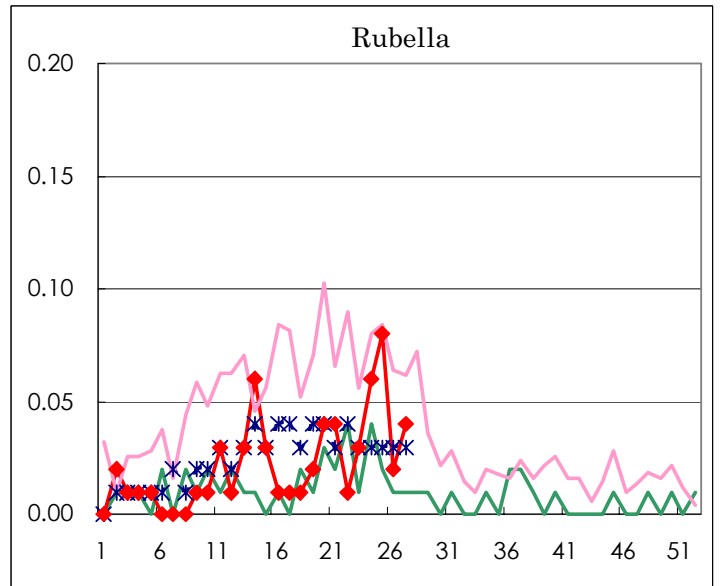
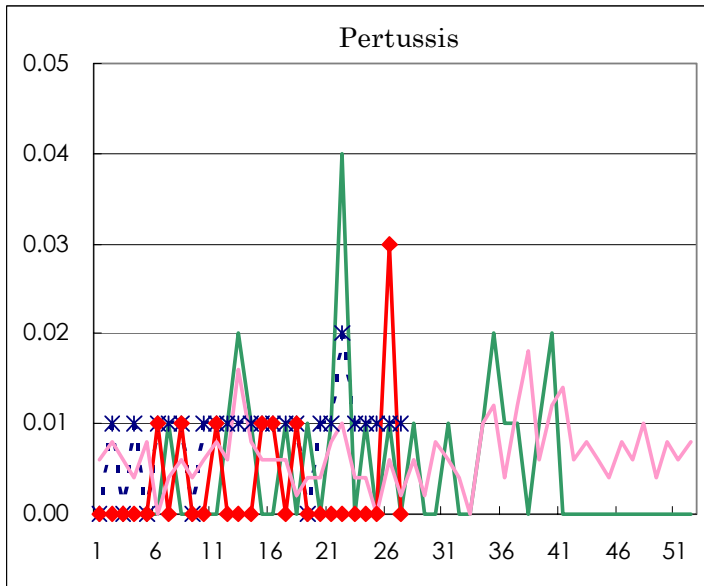
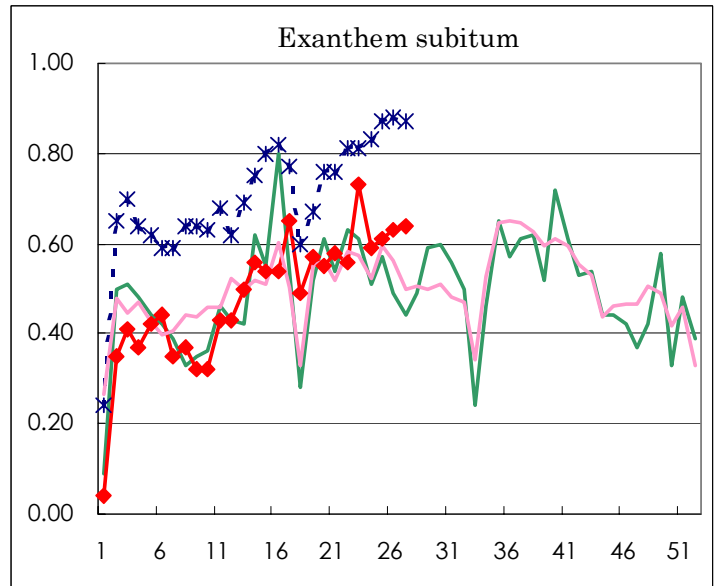
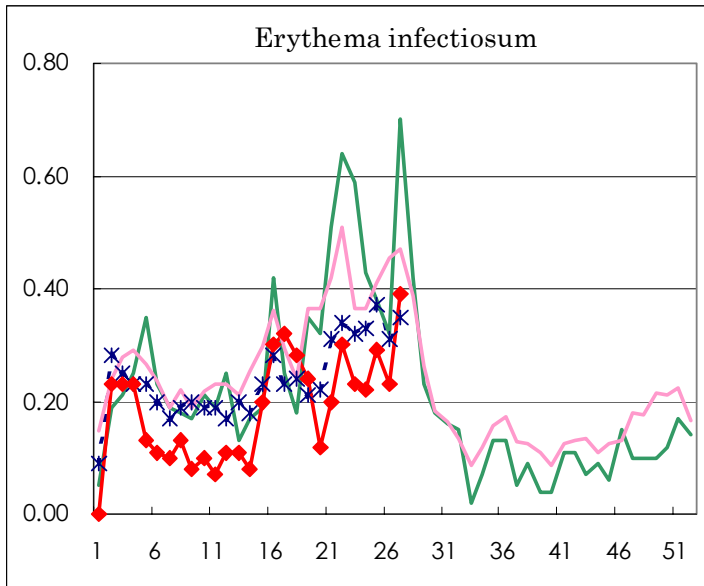
Number of patients with the diseases to be reported
by the designated clinics and hospitals

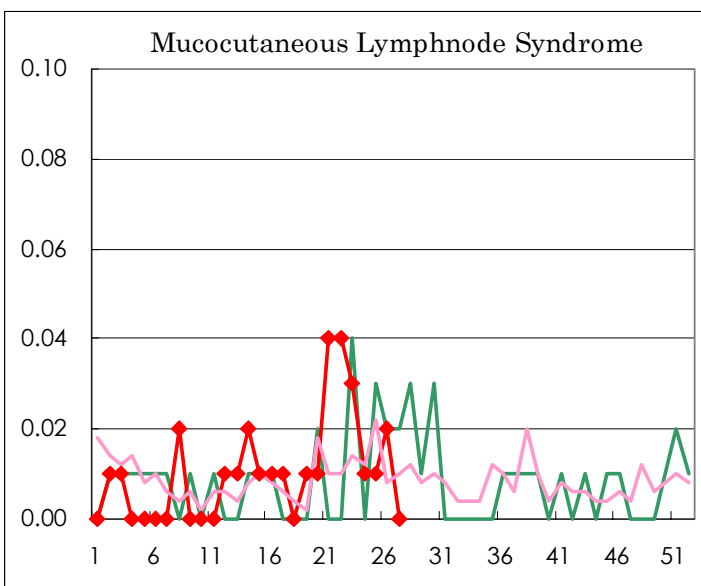
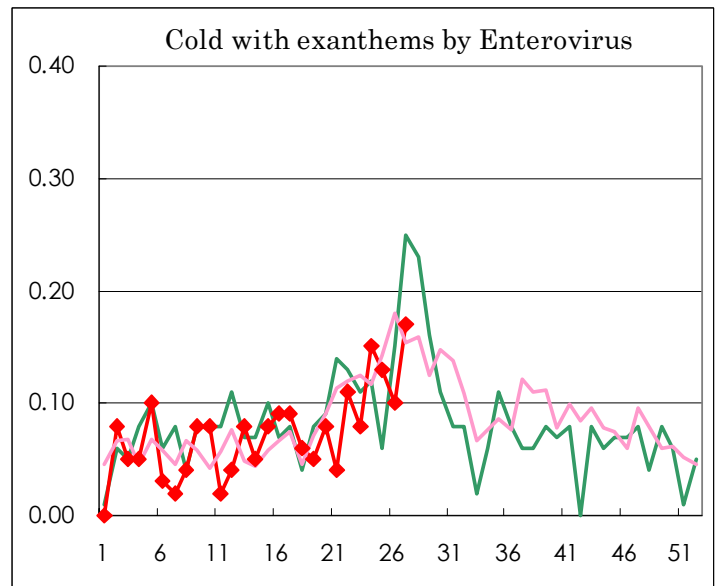
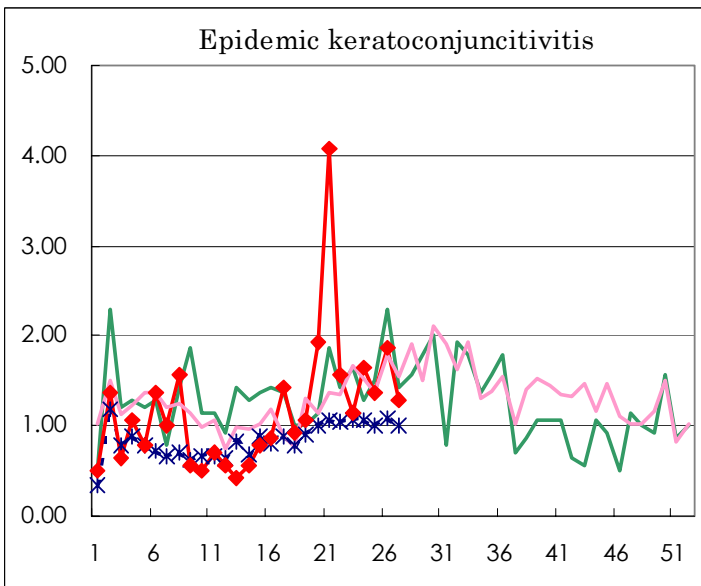
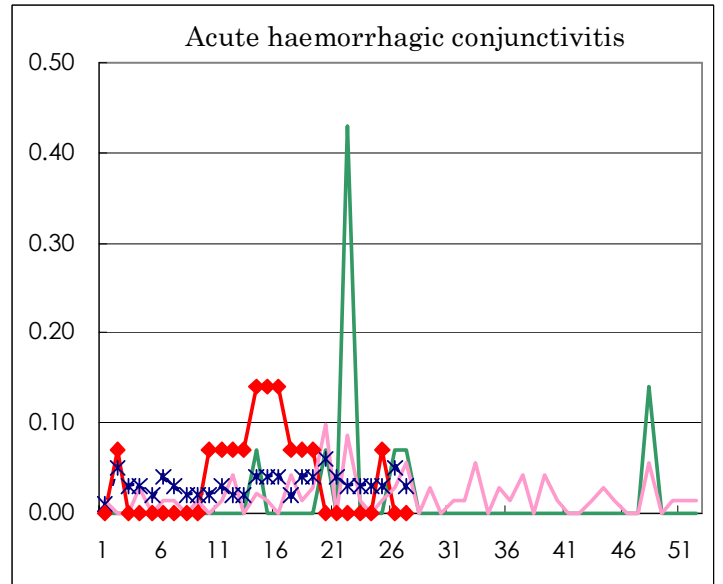
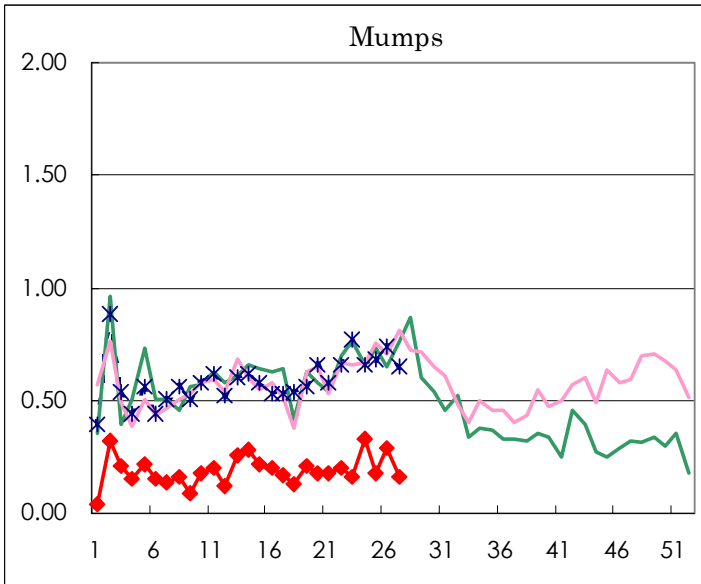
Diseases	Sex	Week(2003)				Total
		24th	25th	26th	27th	
Influenza	M	1				1
	F					
Pharygoconjunctival fever	M	31	37	35	34	137
	F	15	37	25	19	96
Group A streptococcal pharyngitis	M	85	72	59	44	260
	F	63	79	62	42	246
Infectious gastroenteritis	M	290	229	188	162	869
	F	242	196	166	146	750
Chickenpox	M	93	83	103	58	337
	F	83	59	80	43	265
Hand, foot, and mouth disease	M	105	201	283	364	953
	F	81	132	235	288	736
Erythema infectiosum	M	15	17	18	20	70
	F	16	24	14	35	89
Exanthem subitum	M	36	37	52	44	169
	F	48	50	38	50	186
Pertussis	M			1		1
	F			3		3
Rubella	M	6	6		3	15
	F	2	6	3	3	14
Herpangina	M	53	80	143	240	516
	F	35	66	136	205	442
Measles	M	6	6	11	8	31
	F	5	9	6	6	26
Mumps	M	23	13	18	12	66
	F	24	12	23	11	70
Cold with exanthems by Enterovirus	M	15	7	7	12	41
	F	7	11	7	12	37
Mucocutaneous Lymphnode Syndrome	M		2			2
	F	1		3		4
Acute hemorrhagic conjunctivitis	M		1			1
	F					
Epidemic keratoconjunctivitis	M	10	13	15	8	46
	F	13	6	11	10	40
Acute encephalitis (excluding Japanese encephalitis)	M					
	F					
Bacterial meningitis	M					
	F				1	1
Aseptic meningitis	M		2	3	2	7
	F			1	1	2
Mycoplasma pneumonia	M	1	2			3
	F		1			1
Chlamydial pneumonia (excluding psittacosis)	M					
	F					
Measles in adults	M	6	4	7	2	19
	F		3	1	2	6

(Blank means 0.)

Disease Trend Graph (weekly reported cases per fixed-point in comparison)







Tokyo Metropolitan Government
Infectious Disease Surveillance Center

