

INFECTIOUS DISEASES WEEKLY REPORT

TOKYO IDWR

Tokyo Metropolitan Research Laboratory of Public Health

22 July 2003 / Number 28

- Number of patients with the diseases required notifying all the cases
- Number of patients with the diseases to be reported by the designated clinics and hospitals
- Disease trend graph (weekly reported cases per fixed-point in comparison)

Surveillance System in Tokyo, Japan

The diseases which all physicians must report

All physicians must report to health centers the incidence of the diseases which are shown at page one. Health centers electronically report the individual case to Tokyo Metropolitan Infectious Disease Surveillance Center.

Fixed-point surveillance

The numbers of patients who visit designated clinics or hospitals during a week are reported to health centers (There are 37 in Tokyo). And they electronically report the numbers to Tokyo Metropolitan Infectious Disease Surveillance Center. We have about 200 fixed points (clinics and hospitals) in Tokyo.

1st Week is early January and 52nd Week is end of December.

Tokyo Metropolitan Infectious Disease Surveillance Center
Tokyo Metropolitan Research Laboratory of Public Health

TEL:81-3-3363-3213 FAX:81-3-5332-7365

e-mail: idsc@tokyo-eiken.go.jp

URL: idsc.tokyo-eiken.go.jp/

Number of patients with the diseases which all physicians must report

Category	Diseases	Tokyo					Japan	
		25th	26th	27th	28th	Total	28th	Total
I	Ebola hemorrhagic fever							
	Crimean-Congo hemorrhagic fever							
	Plague							
	Marburg disease							
	Lassa fever							
II	Cholera					2		9
	Shigellosis				2	49	4	221
	Typhoid fever	1	2	1		14		34
	Paratyphoid fever					3		19
	Acute poliomyelitis							
	Diphtheria							
III	Enterohemorrhagic <i>Escherichia coli</i> infection	3	7	7	6	67	89	804
IV	Amebiasis	5	2	3		65	4	269
	Echinococcosis							11
	Yellow fever							
	Psittacosis						1	32
	Relapsing fever							
	Acute viral hepatitis	4	1	1	3	51	4	458
	Q fever					1		5
	Rabies							
	Cryptosporidiosis		1		1	2		3
	Creutzfeldt-Jakob Disease	1		1		7		60
	Sever invasive streptococcal infections	1				4		37
	Acquired immunodeficiency syndrome	2	6	7	11	173	12	449
	Coccidioidomycosis							1
	Giardiasis	2			1	21	1	51
	Hemorrhagic fever with renal syndrome							
	Meningococcal meningitis					3		12
	Congenital rubella syndrome							1
	Anthrax							
	Scrub typhus (Tsutsugamushi disease)						1	131
	Dengue fever	1		1	1	8		18
	Japanese spotted fever						1	12
	Japanese encephalitis							
	Infant botulism							
	Syphilis	1		1	4	43	5	256
	Tetanus					3	1	33
	Vancomycin-resistant <i>enterococcus</i> infection				1	3	1	37
	Hantavirus pulmonary syndrome							
	Helpes B virus infection							
	Brucellosis							
	Epidemic typhus							
Malaria	1	1	1	2	17	1	42	
Lyme disease						1	3	
Legionellosis					7	3	62	
West Nile fever								

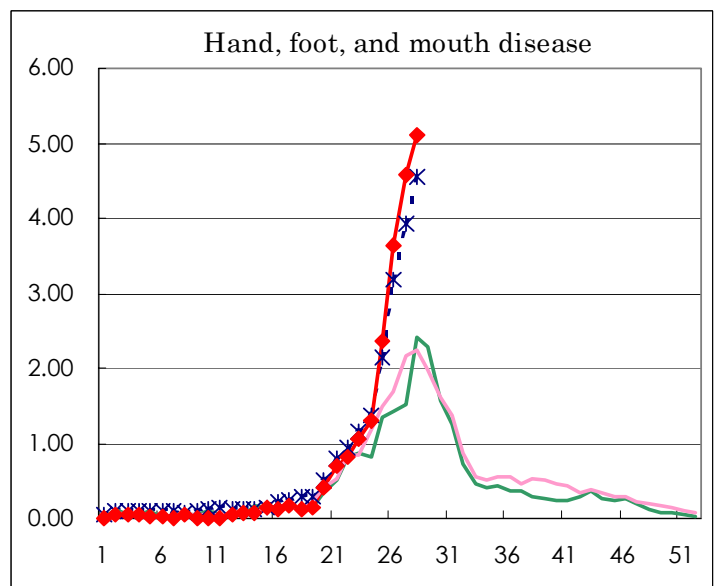
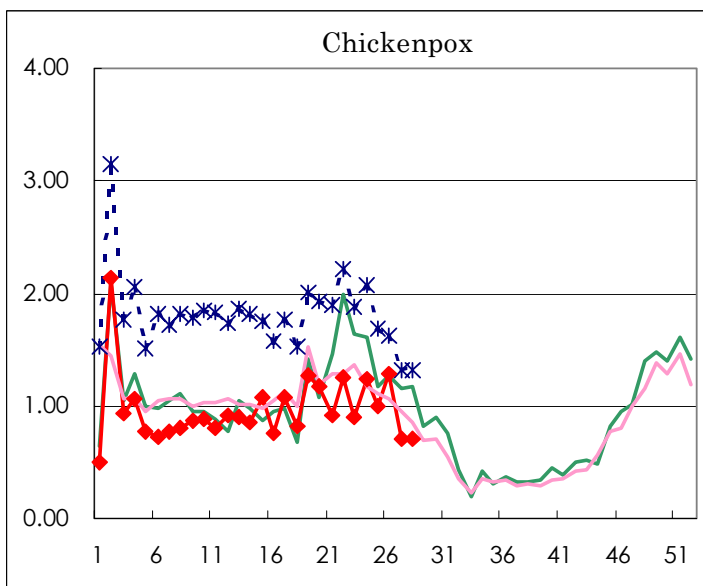
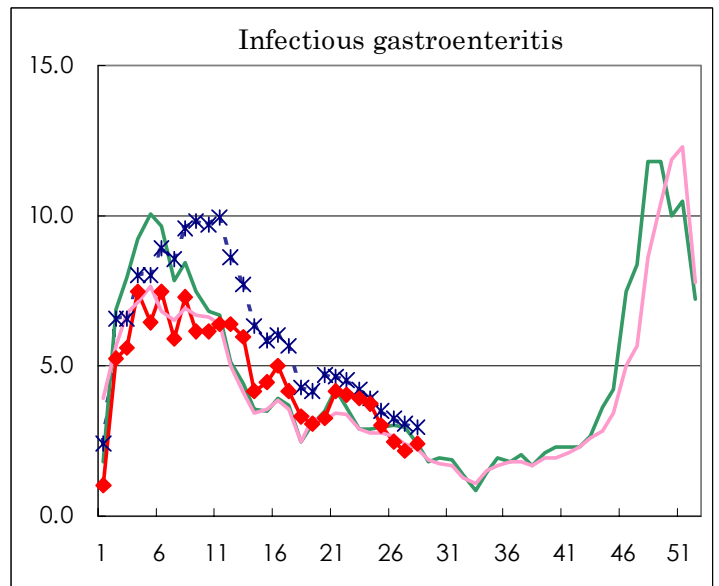
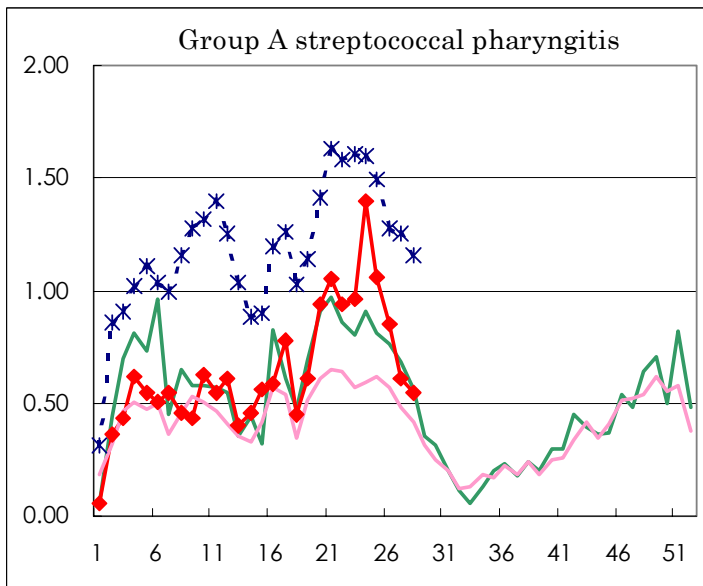
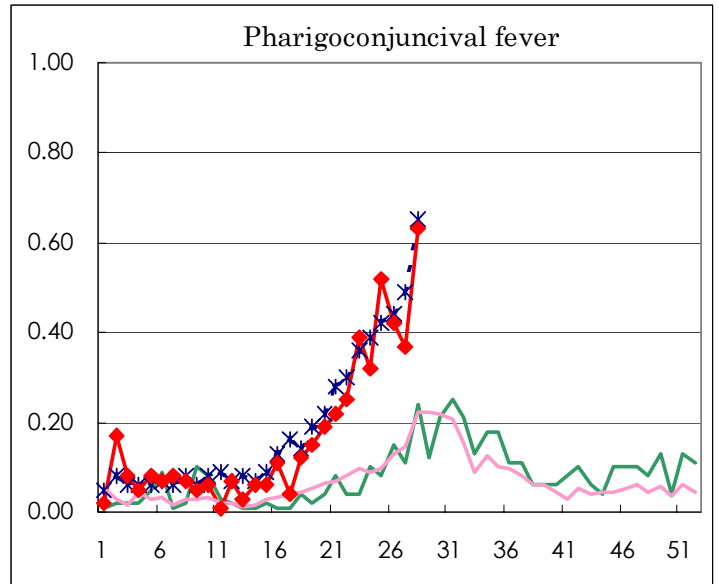
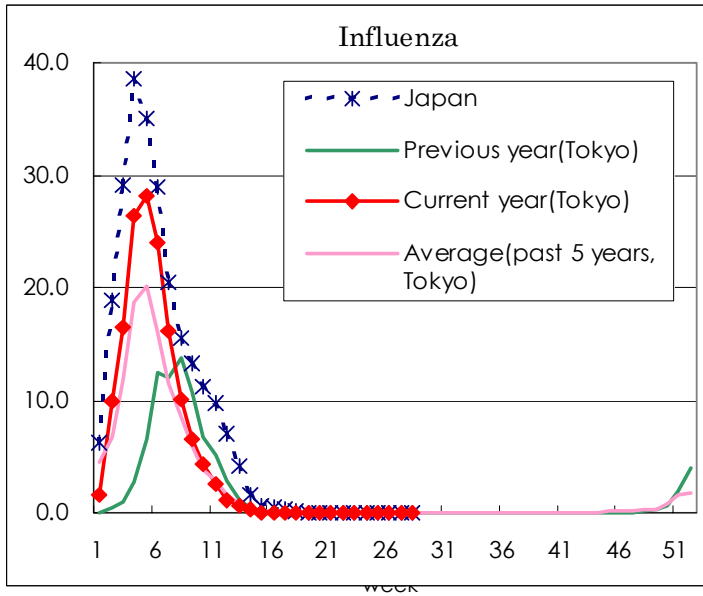
(Blank means 0.)

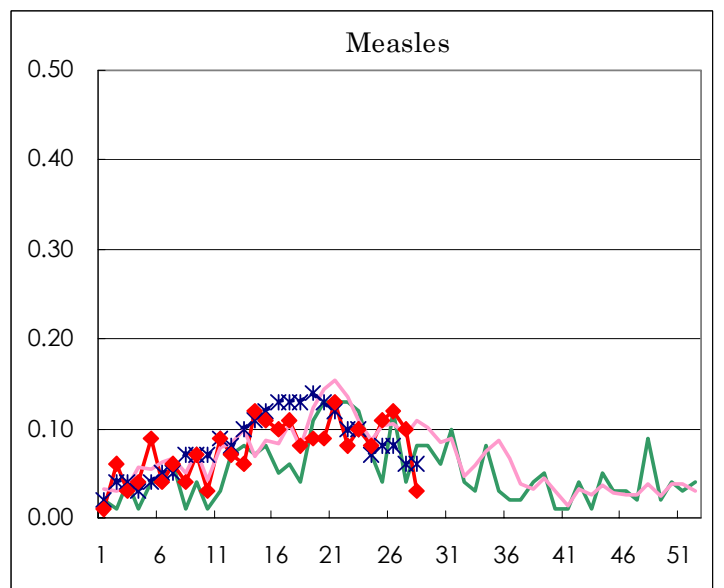
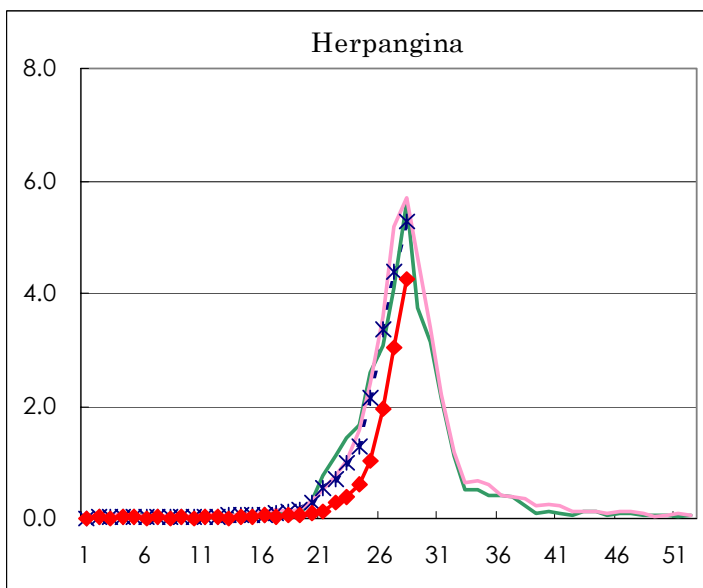
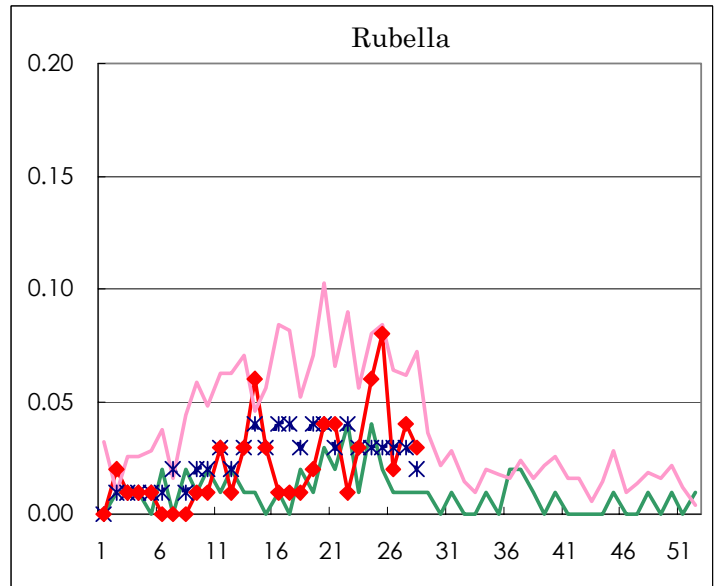
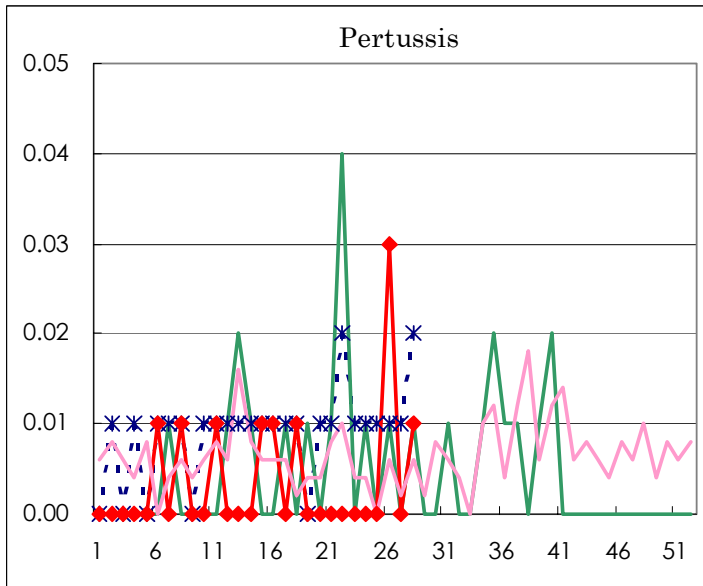
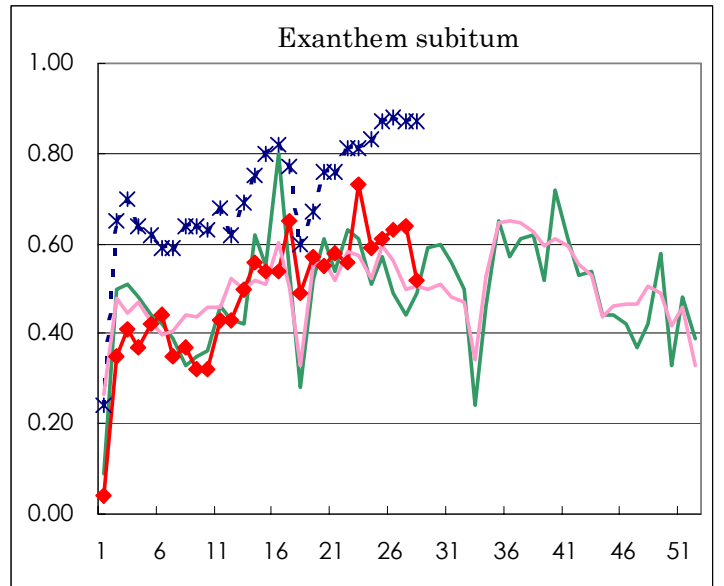
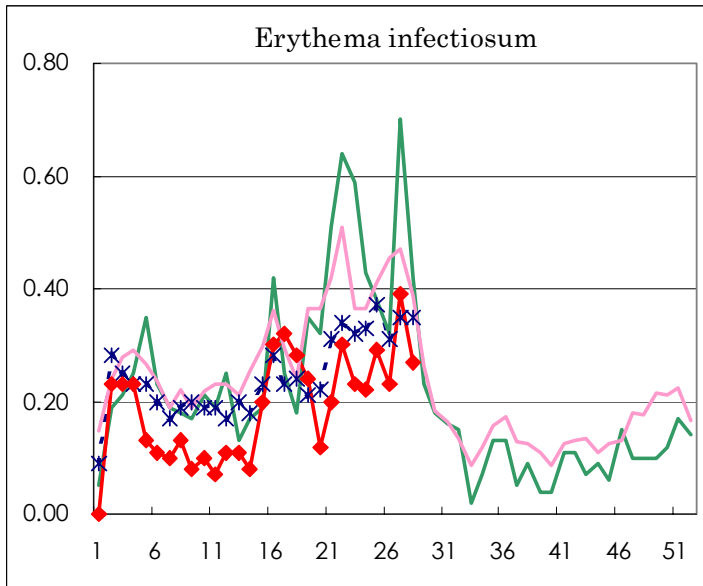
Number of patients with the diseases to be reported
by the designated clinics and hospitals

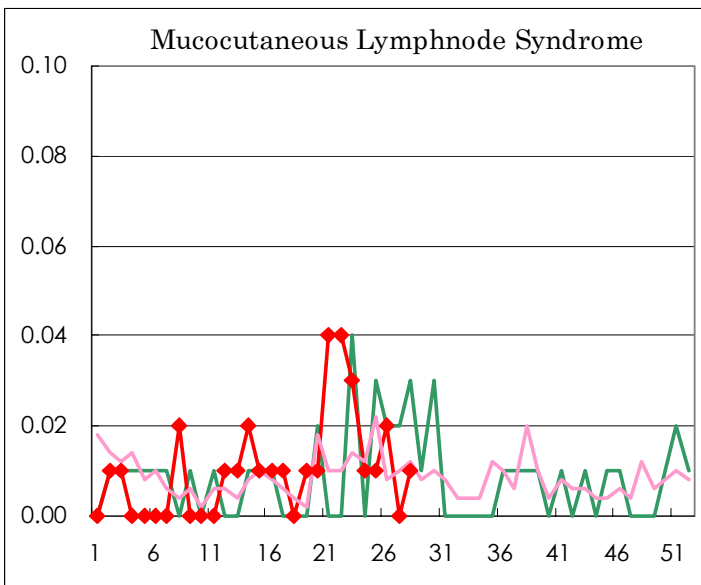
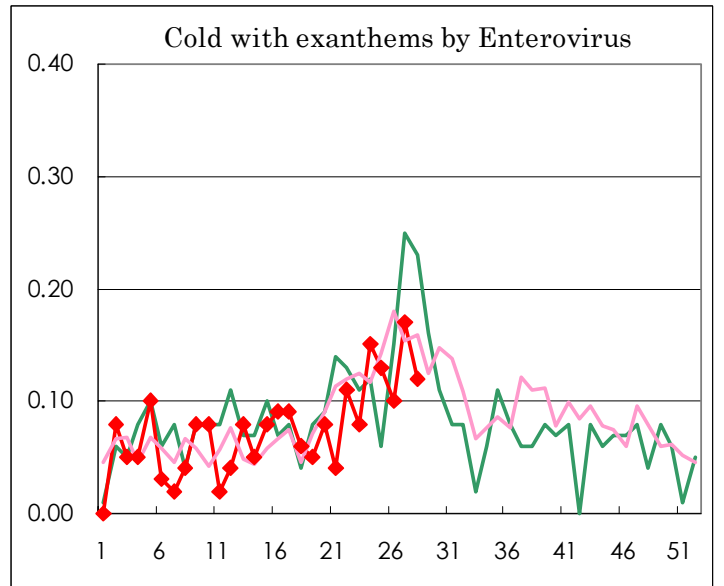
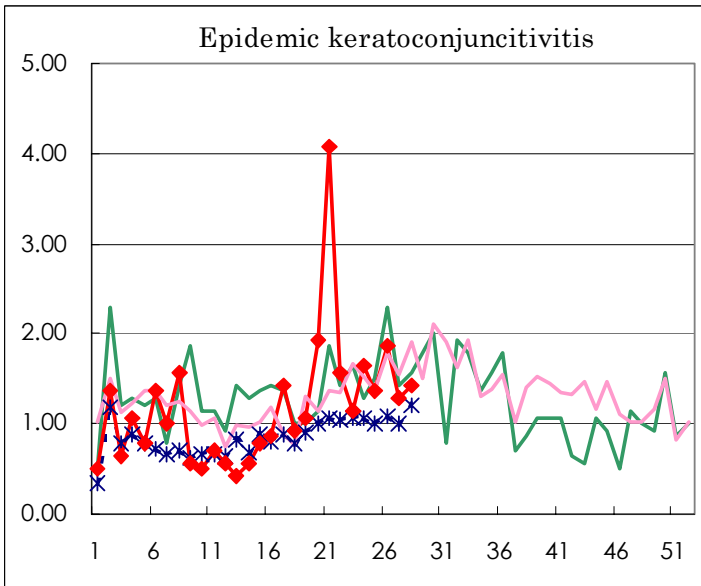
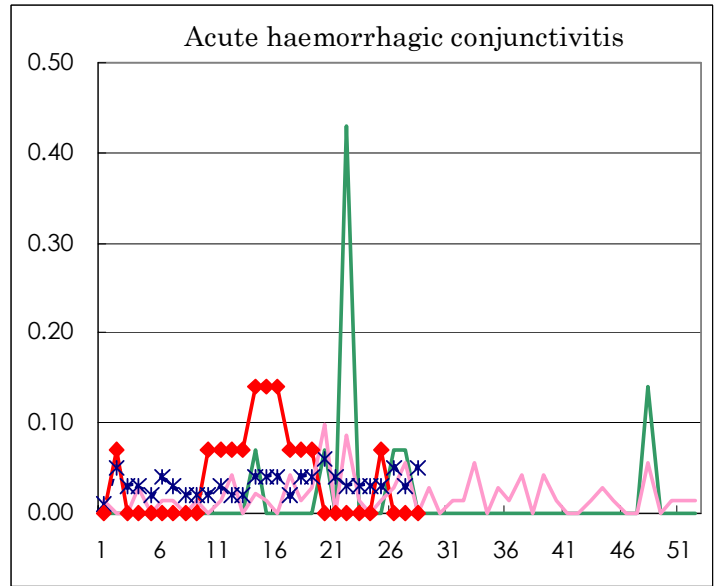
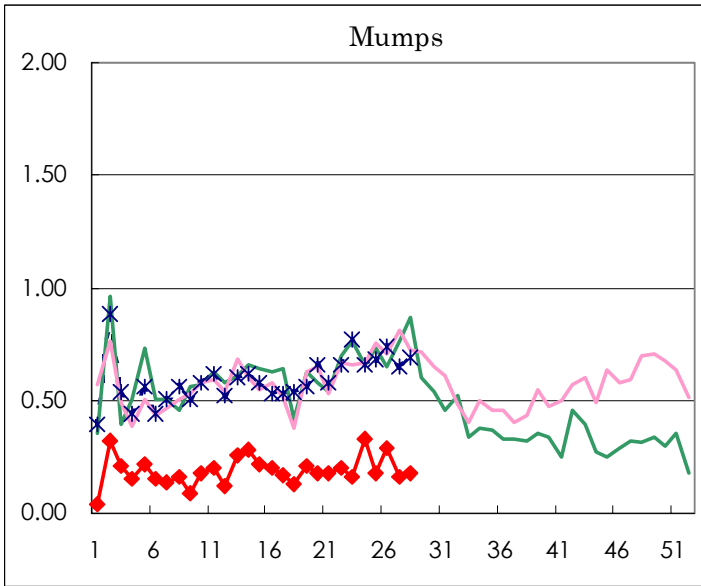
Diseases	Sex	Week(2003)				Total
		25th	26th	27th	28th	
Influenza	M					
	F					
Pharygoconjunctival fever	M	37	35	34	54	160
	F	37	25	19	35	116
Group A streptococcal pharyngitis	M	72	59	44	45	220
	F	79	62	42	33	216
Infectious gastroenteritis	M	229	188	162	181	760
	F	196	166	146	163	671
Chickenpox	M	83	103	58	53	297
	F	59	80	43	46	228
Hand, foot, and mouth disease	M	201	283	364	422	1270
	F	132	235	288	302	957
Erythema infectiosum	M	17	18	20	20	75
	F	24	14	35	19	92
Exanthem subitum	M	37	52	44	33	166
	F	50	38	50	41	179
Pertussis	M		1		1	2
	F		3			3
Rubella	M	6		3	3	12
	F	6	3	3	1	13
Herpangina	M	80	143	240	323	786
	F	66	136	205	284	691
Measles	M	6	11	8	2	27
	F	9	6	6	2	23
Mumps	M	13	18	12	15	58
	F	12	23	11	11	57
Cold with exanthems by Enterovirus	M	7	7	12	6	32
	F	11	7	12	11	41
Mucocutaneous Lymphnode Syndrome	M	2				2
	F		3		1	4
Acute hemorrhagic conjunctivitis	M	1				1
	F					
Epidemic keratoconjunctivitis	M	13	15	8	13	49
	F	6	11	10	7	34
Acute encephalitis (excluding Japanese encephalitis)	M					
	F					
Bacterial meningitis	M					
	F			1		1
Aseptic meningitis	M	2	3	2	1	8
	F		1	1		2
Mycoplasma pneumonia	M	2			1	3
	F	1				1
Chlamydial pneumonia (excluding psittacosis)	M					
	F					
Measles in adults	M	4	7	2	5	18
	F	3	1	2	1	7

(Blank means 0.)

Disease Trend Graph (weekly reported cases per fixed-point in comparison)







Tokyo Metropolitan Government
Infectious Disease Surveillance Center

