

INFECTIOUS DISEASES WEEKLY REPORT

TOKYO IDWR

Tokyo Metropolitan Public Health Research Institute

5 August 2003 / Number 30

- Number of patients with the diseases required notifying all the cases
- Number of patients with the diseases to be reported by the designated clinics and hospitals
- Disease trend graph (weekly reported cases per fixed-point in comparison)

Surveillance System in Tokyo, Japan

The diseases which all physicians must report

All physicians must report to health centers the incidence of the diseases which are shown at page one. Health centers electronically report the individual case to Tokyo Metropolitan Infectious Disease Surveillance Center.

Fixed-point surveillance

The numbers of patients who visit designated clinics or hospitals during a week are reported to health centers (There are 37 in Tokyo). And they electronically report the numbers to Tokyo Metropolitan Infectious Disease Surveillance Center. We have about 200 fixed points (clinics and hospitals) in Tokyo.

1st Week is early January and 52nd Week is end of December.

Tokyo Metropolitan Infectious Disease Surveillance Center
Tokyo Metropolitan Public Health Research Institute

TEL:81-3-3363-3213 FAX:81-3-5332-7365

e-mail: idsc@tokyo-eiken.go.jp

URL: idsc.tokyo-eiken.go.jp/

Number of patients with the diseases which all physicians must report

Category	Diseases	Tokyo					Japan	
		27th	28th	29th	30th	Total	30th	Total
I	Ebola hemorrhagic fever							
	Crimean-Congo hemorrhagic fever							
	Plague							
	Marburg disease							
	Lassa fever							
II	Cholera					2		9
	Shigellosis		2	1	2	52	7	232
	Typhoid fever	1				14	1	35
	Paratyphoid fever			1		4	1	21
	Acute poliomyelitis							
	Diphtheria							
III	Enterohemorrhagic <i>Escherichia coli</i> infection	7	6	15	9	91	80	1017
IV	Amebiasis	3		2	1	68	3	288
	Echinococcosis							11
	Yellow fever							
	Psittacosis							32
	Relapsing fever							
	Acute viral hepatitis	1	3		1	52	1	477
	Q fever					1		5
	Rabies							
	Cryptosporidiosis		1		1	3	1	4
	Creutzfeldt-Jakob Disease	1		1		8	2	65
	Sever invasive streptococcal infections					4		37
	Acquired immunodeficiency syndrome	7	11	7	9	189	13	484
	Coccidioidomycosis							1
	Giardiasis		1	1	1	23	1	56
	Hemorrhagic fever with renal syndrome							
	Meningococcal meningitis					3		12
	Congenital rubella syndrome							1
	Anthrax							
	Scrub typhus (Tsutsugamushi disease)						1	132
	Dengue fever	1	1			8		19
	Japanese spotted fever						1	14
	Japanese encephalitis							
	Infant botulism							
	Syphilis	1	4	1		44	6	281
	Tetanus					3	2	36
	Vancomycin-resistant <i>enterococcus</i> infection		1			3		40
	Hantavirus pulmonary syndrome							
	Helpes B virus infection							
	Brucellosis							
	Epidemic typhus							
Malaria	1	2			17		42	
Lyme disease							2	
Legionellosis					7	1	72	
West Nile fever								

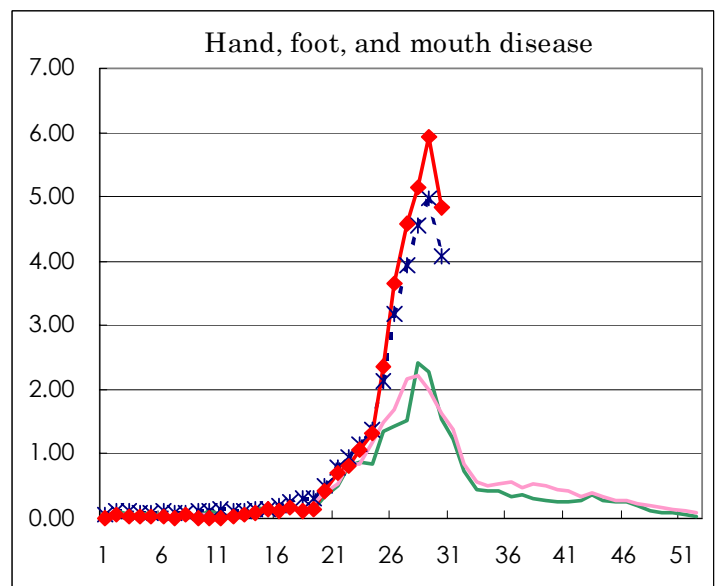
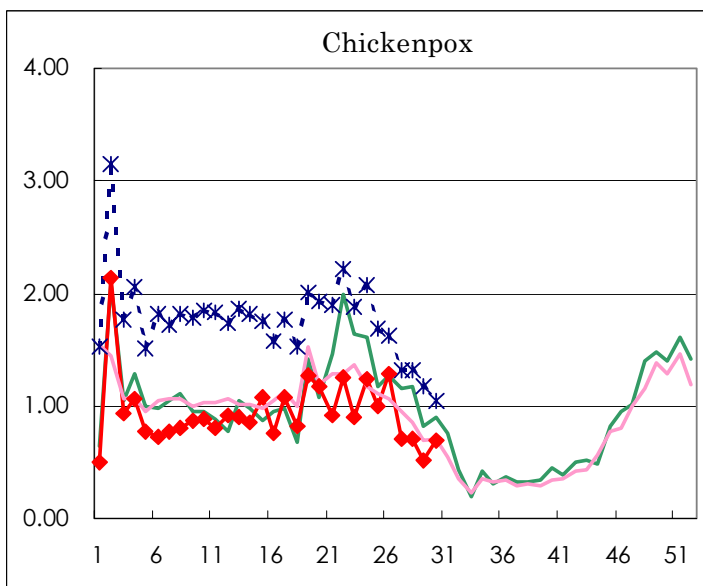
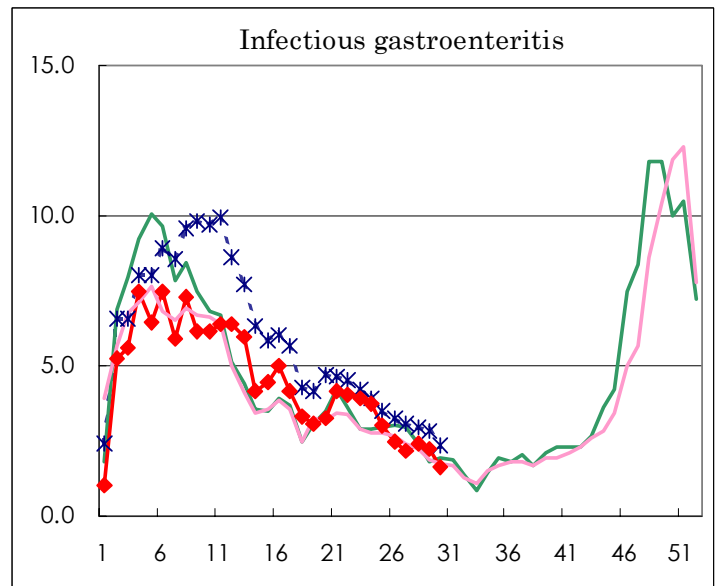
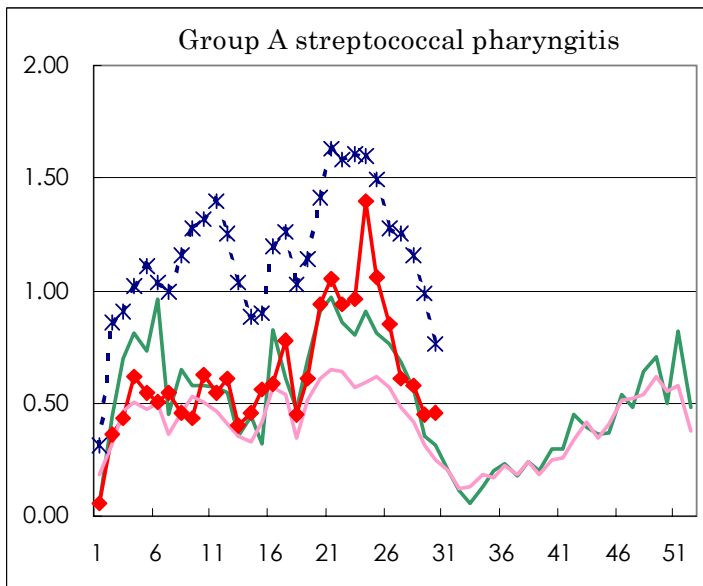
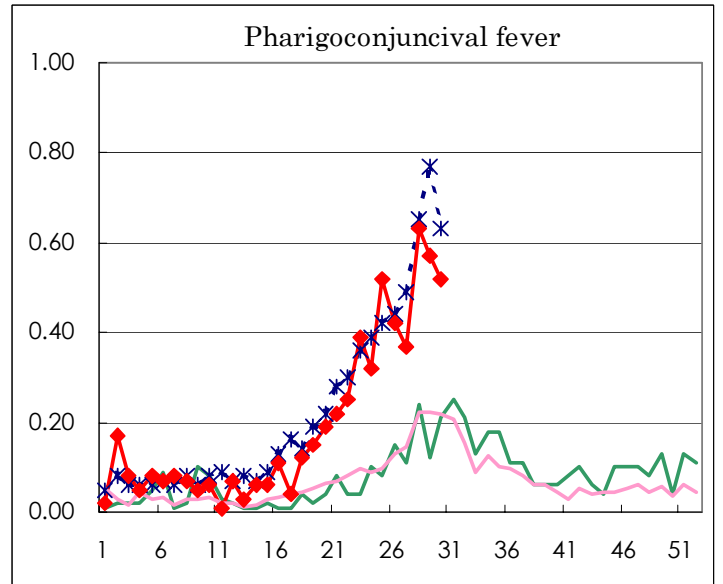
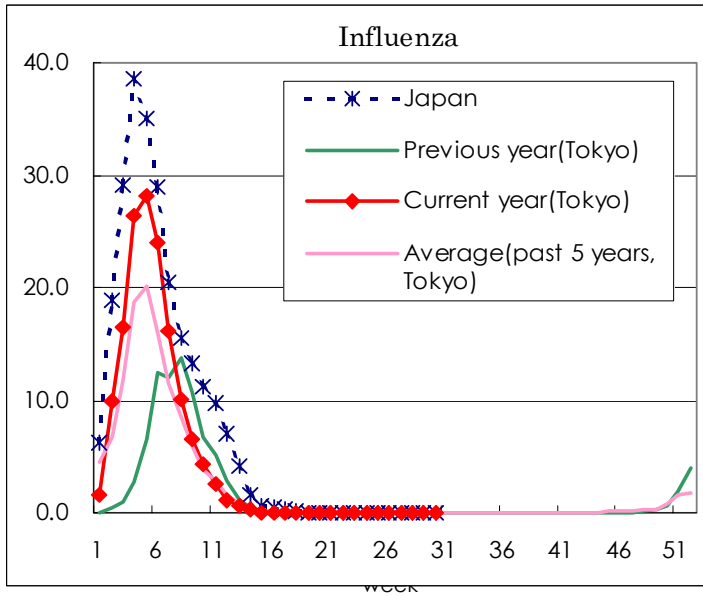
(Blank means 0.)

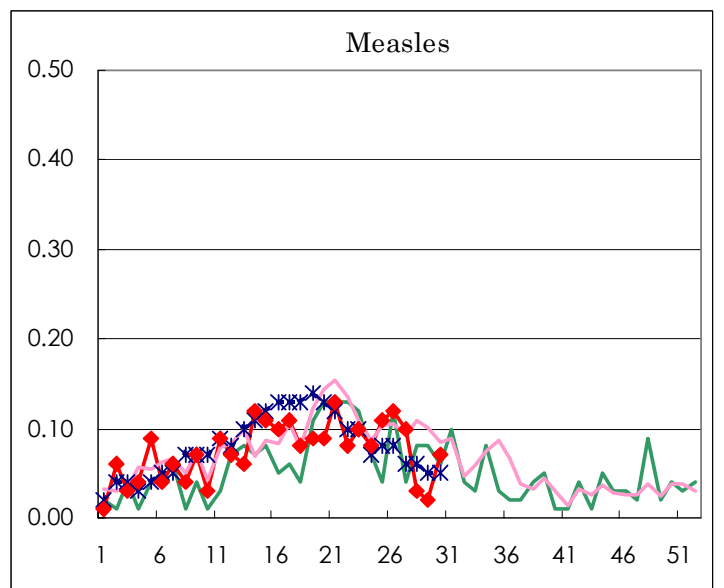
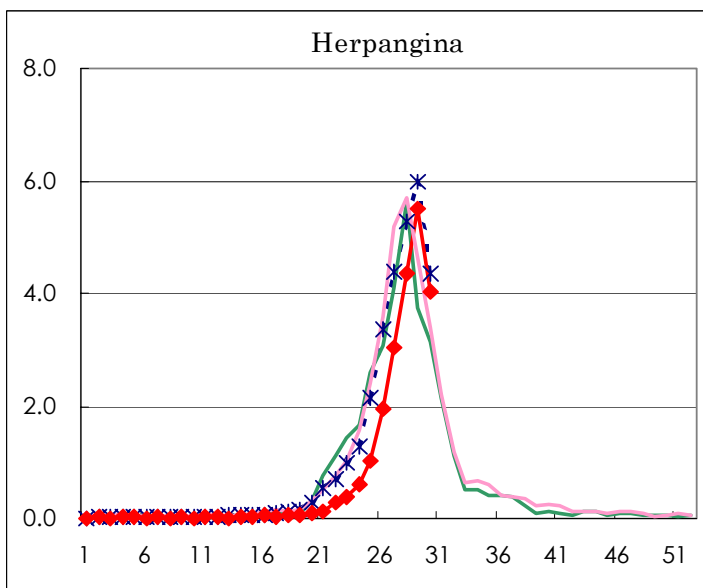
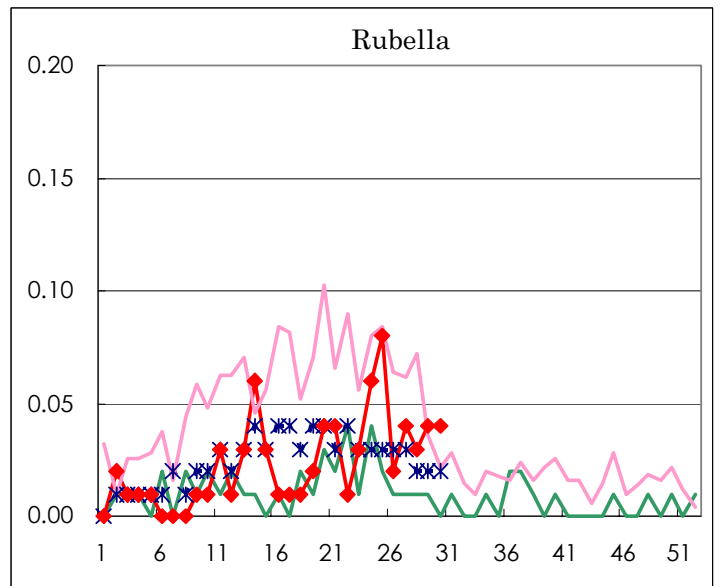
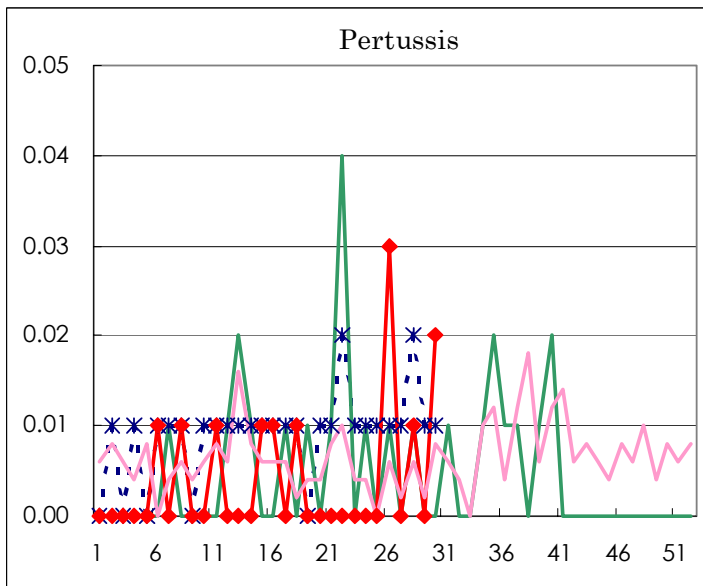
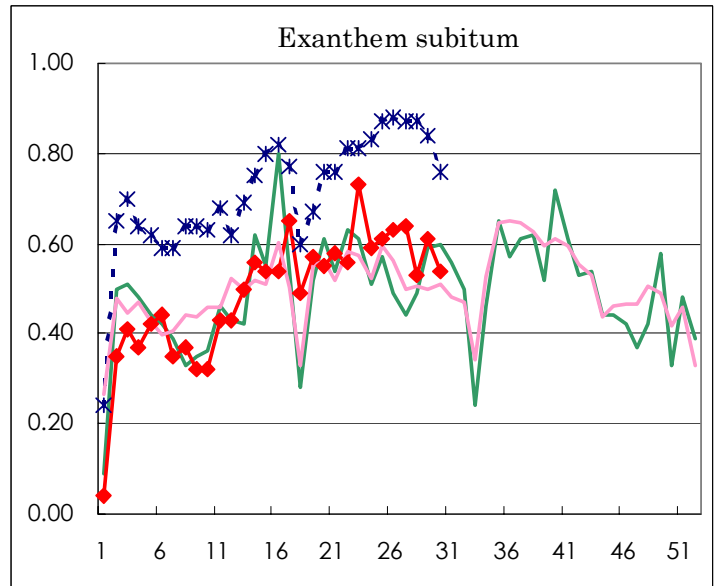
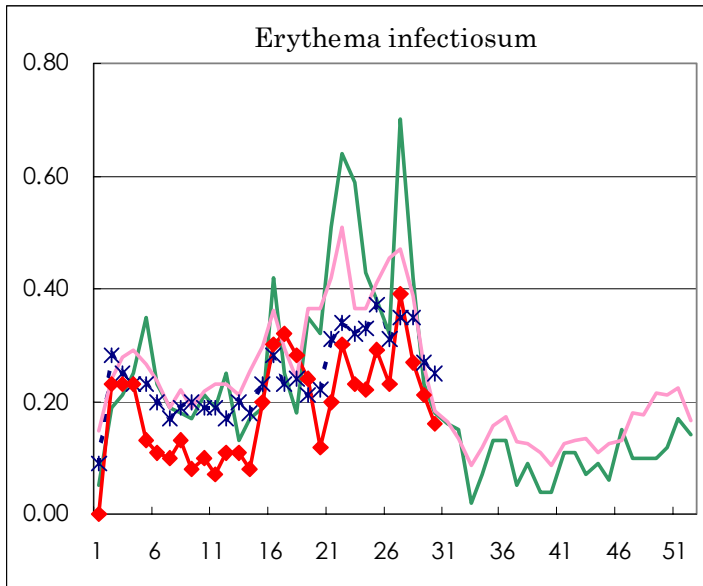
Number of patients with the diseases to be reported
by the designated clinics and hospitals

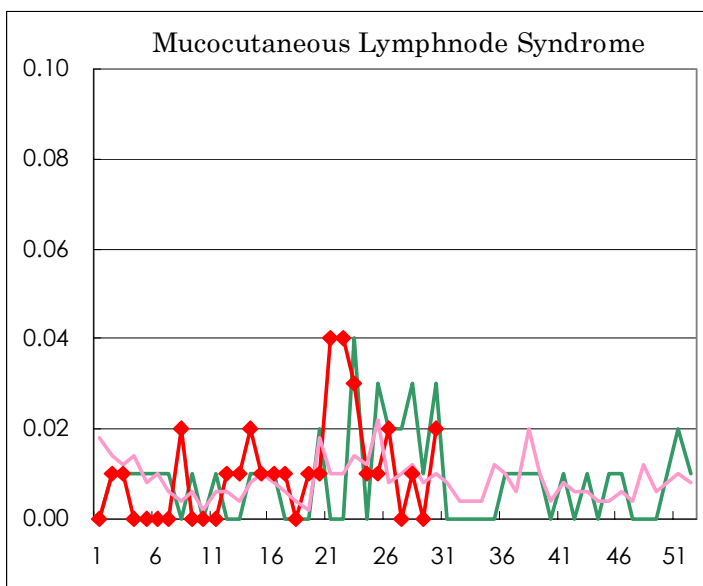
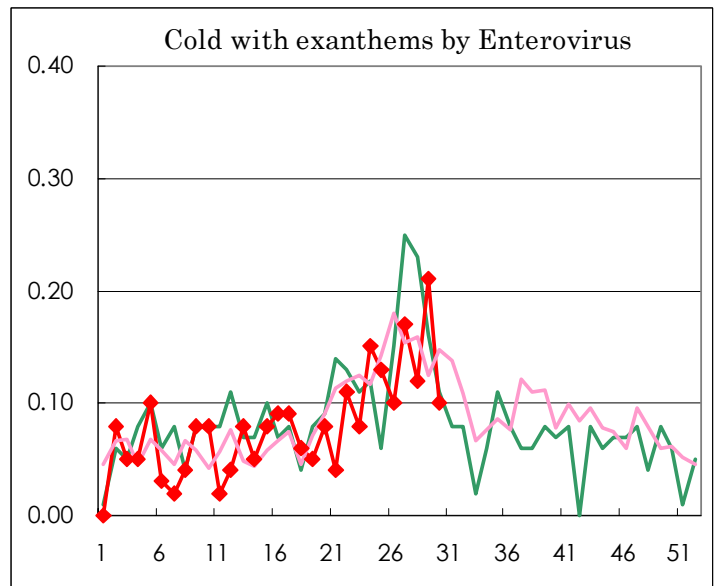
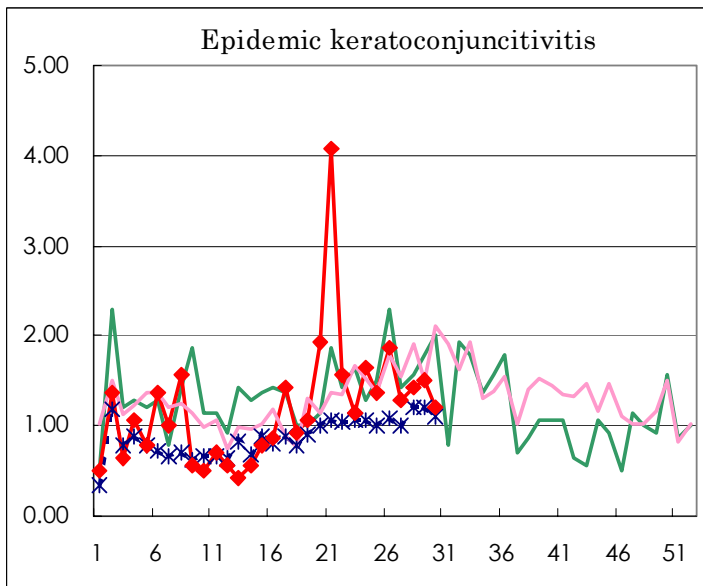
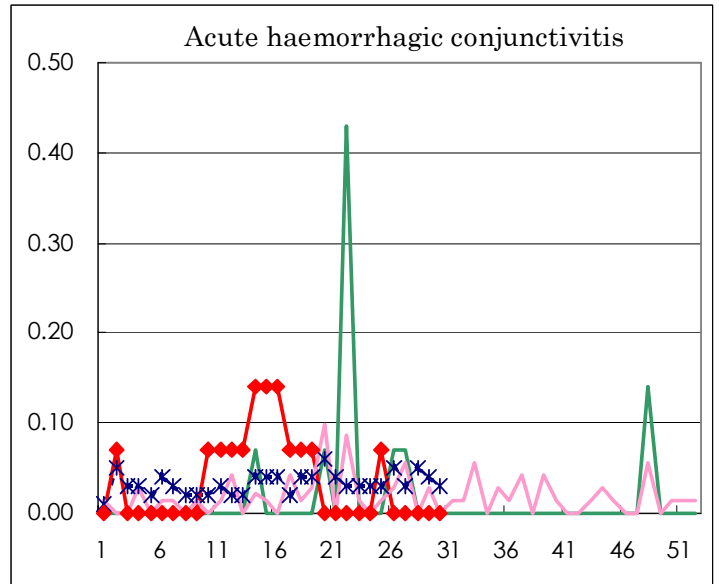
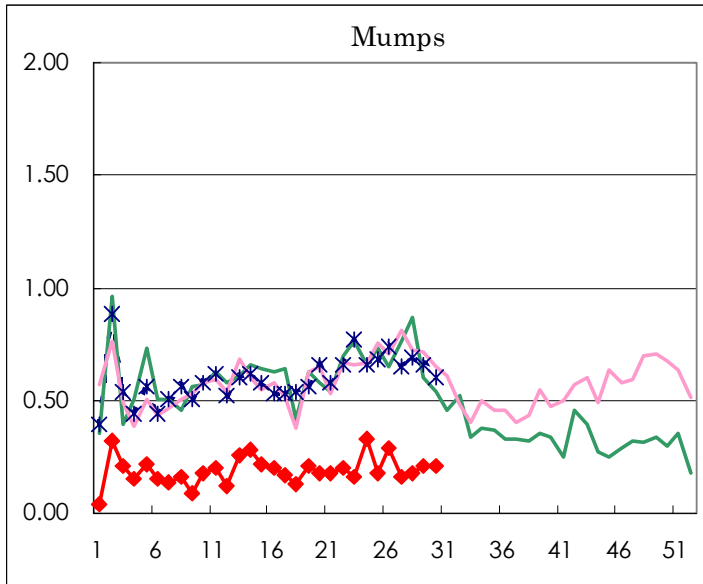
Diseases	Sex	Week(2003)				Total
		27th	28th	29th	30th	
Influenza	M					13,398
	F					13,078
Pharygoconjunctival fever	M	34	55	43	39	394
	F	19	35	38	35	338
Group A streptococcal pharyngitis	M	44	47	26	38	1,347
	F	42	35	38	28	1,215
Infectious gastroenteritis	M	162	181	180	127	9,705
	F	146	163	137	102	9,053
Chickenpox	M	58	53	34	45	2,099
	F	43	46	38	53	1,815
Hand, foot, and mouth disease	M	364	426	467	353	2,082
	F	288	304	375	334	1,736
Erythema infectiosum	M	20	20	18	7	381
	F	35	19	12	16	385
Exanthem subitum	M	44	33	51	40	990
	F	50	42	36	36	1,018
Pertussis	M		1		3	10
	F					4
Rubella	M	3	3	2	1	46
	F	3	1	3	5	48
Herpangina	M	240	329	387	312	1,322
	F	205	290	393	259	1,203
Measles	M	8	2	1	3	157
	F	6	2	2	7	155
Mumps	M	12	15	21	15	459
	F	11	11	9	15	333
Cold with exanthems by Enterovirus	M	12	6	17	6	168
	F	12	11	13	8	156
Mucocutaneous Lymphnode Syndrome	M				2	18
	F		1		1	22
Acute hemorrhagic conjunctivitis	M					8
	F					7
Epidemic keratoconjunctivitis	M	8	13	16	12	279
	F	10	7	5	5	201
Acute encephalitis (excluding Japanese encephalitis)	M					2
	F					1
Bacterial meningitis	M					5
	F	1				6
Aseptic meningitis	M	2	2	6		16
	F	1		1		7
Mycoplasma pneumonia	M		1	2		33
	F		4	1		31
Chlamydial pneumonia (excluding psittacosis)	M			1		1
	F					
Measles in adults	M	2	5	6		69
	F	2	2	3		57

(Blank means 0.)

Disease Trend Graph (weekly reported cases per fixed-point in comparison)







Tokyo Metropolitan Government
Infectious Disease Surveillance Center

