

INFECTIOUS DISEASES WEEKLY REPORT

# TOKYO IDWR

Tokyo Metropolitan Public Health Research Institute

19 August 2003 / Number 32

- Number of patients with the diseases required notifying all the cases
- Number of patients with the diseases to be reported by the designated clinics and hospitals
- Disease trend graph (weekly reported cases per fixed-point in comparison)

## Surveillance System in Tokyo, Japan

### The diseases which all physicians must report

All physicians must report to health centers the incidence of the diseases which are shown at page one. Health centers electronically report the individual case to Tokyo Metropolitan Infectious Disease Surveillance Center.

### Fixed-point surveillance

The numbers of patients who visit designated clinics or hospitals during a week are reported to health centers ( There are 37 in Tokyo). And they electronically report the numbers to Tokyo Metropolitan Infectious Disease Surveillance Center. We have about 200 fixed points (clinics and hospitals) in Tokyo.

1<sup>st</sup> Week is early January and 52<sup>nd</sup> Week is end of December.

Tokyo Metropolitan Infectious Disease Surveillance Center  
Tokyo Metropolitan Public Health Research Institute

TEL:81-3-3363-3213 FAX:81-3-5332-7365  
e-mail: [idsc@tokyo-eiken.go.jp](mailto:idsc@tokyo-eiken.go.jp)  
URL: [idsc.tokyo-eiken.go.jp/](http://idsc.tokyo-eiken.go.jp/)

## Number of patients with the diseases which all physicians must report

Category	Diseases	Tokyo					Japan	
		29th	30th	31st	32nd	Total	32nd	Total
I	Ebola hemorrhagic fever							
	Crimean-Congo hemorrhagic fever							
	Plague							
	Marburg disease							
	Lassa fever							
II	Cholera					2		9
	Shigellosis	1	2	2	2	56	19	258
	Typhoid fever					14		35
	Paratyphoid fever	1				4		21
	Acute poliomyelitis							
	Diphtheria							
III	Enterohemorrhagic <i>Escherichia coli</i> infection	15	9	4	1	96	66	1189
IV	Amebiasis	2	1	2	2	72	6	309
	Echinococcosis							12
	Yellow fever							
	Psittacosis							33
	Relapsing fever							
	Acute viral hepatitis		1		1	53	4	491
	Q fever					1		6
	Rabies							
	Cryptosporidiosis		1	1		4		5
	Creutzfeldt-Jakob Disease	1		2		10	1	73
	Sever invasive streptococcal infections					4		38
	Acquired immunodeficiency syndrome	7	9	6	11	206	10	522
	Coccidioidomycosis							1
	Giardiasis	1	1		1	24	2	64
	Hemorrhagic fever with renal syndrome							
	Meningococcal meningitis					3		12
	Congenital rubella syndrome							1
	Anthrax							
	Scrub typhus (Tsutsugamushi disease)						1	134
	Dengue fever			1	1	10	1	21
	Japanese spotted fever						1	19
	Japanese encephalitis							
	Infant botulism							
	Syphilis	1		4		48	2	304
	Tetanus					3	1	40
	Vancomycin-resistant <i>enterococcus</i> infection					3		42
	Hantavirus pulmonary syndrome							
	Helpes B virus infection							
	Brucellosis							
	Epidemic typhus							
Malaria			1	2	20	1	47	
Lyme disease							4	
Legionellosis				1	8		79	
West Nile fever								

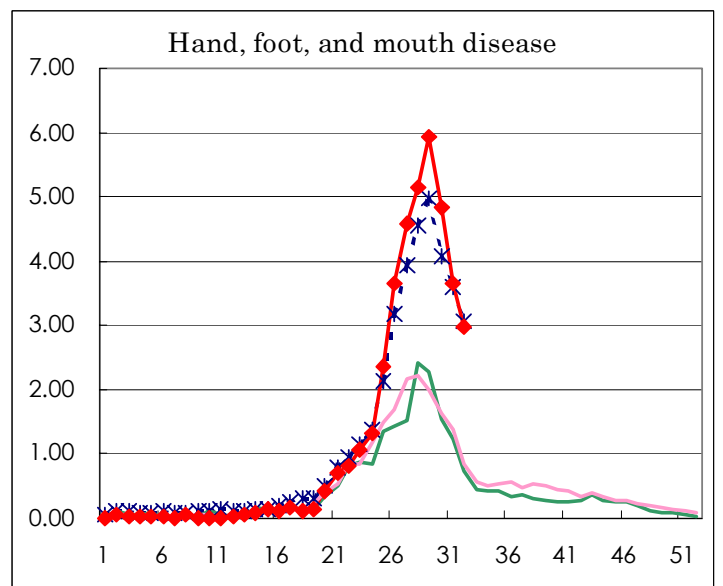
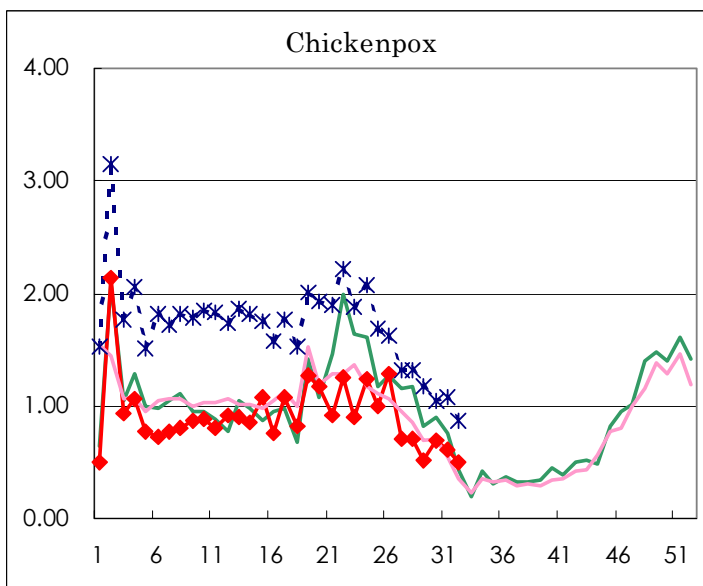
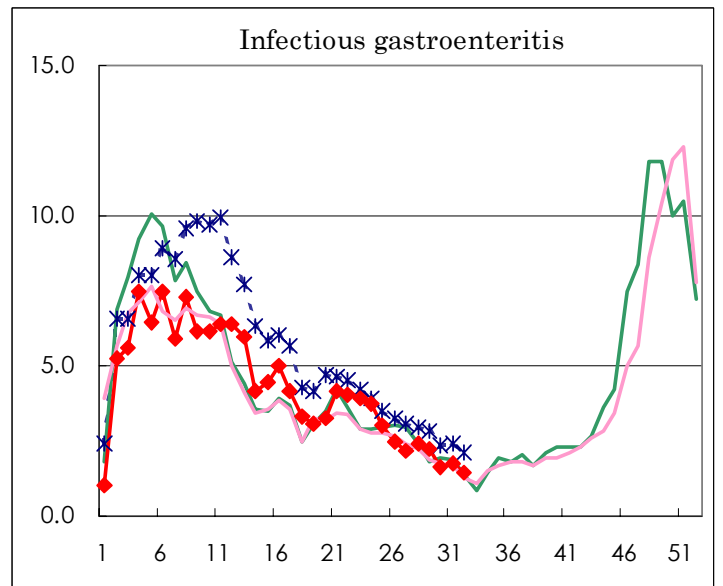
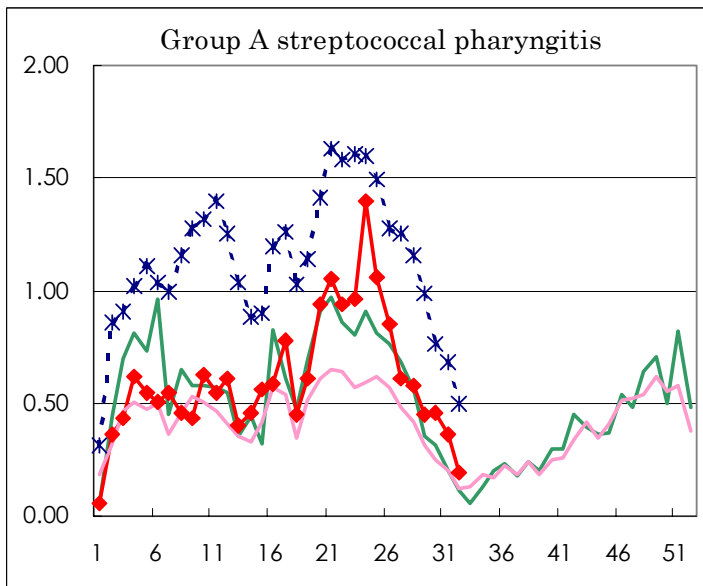
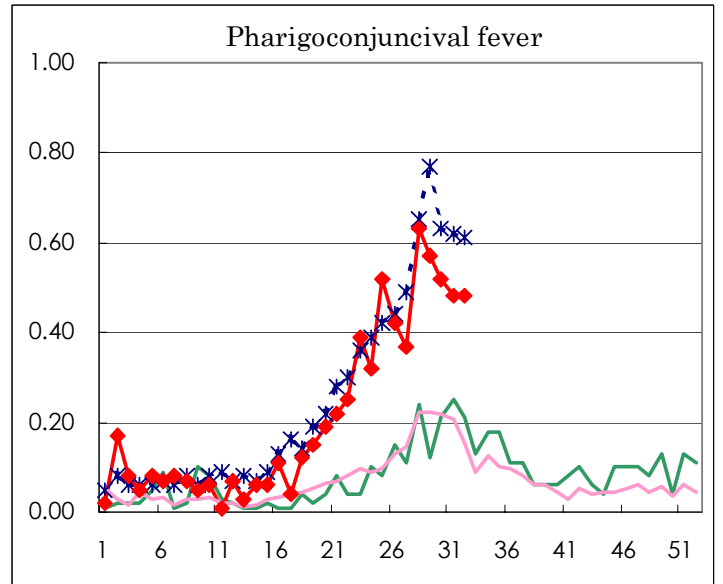
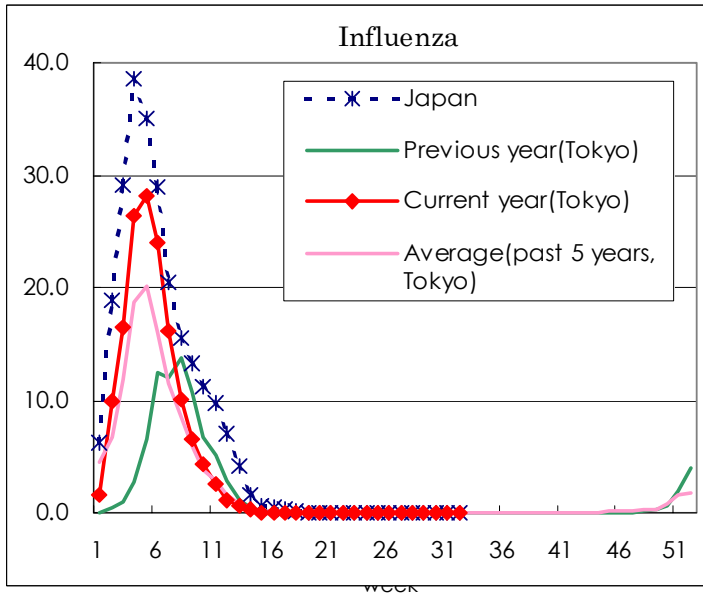
( Blank means 0. )

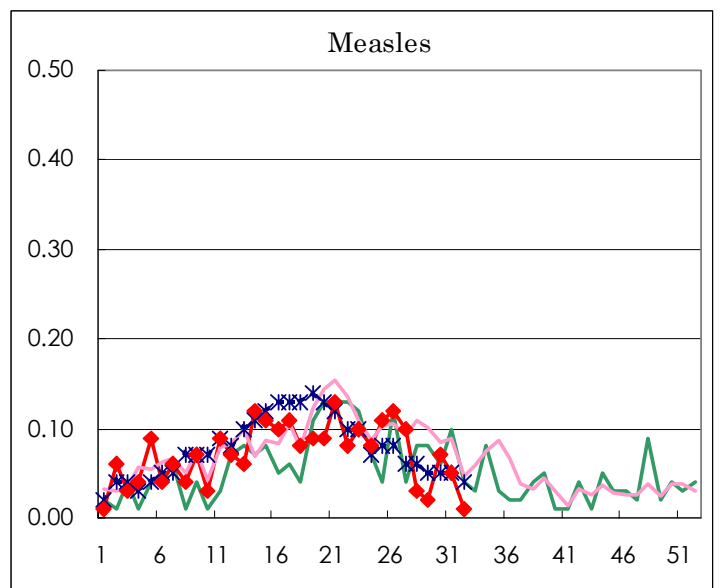
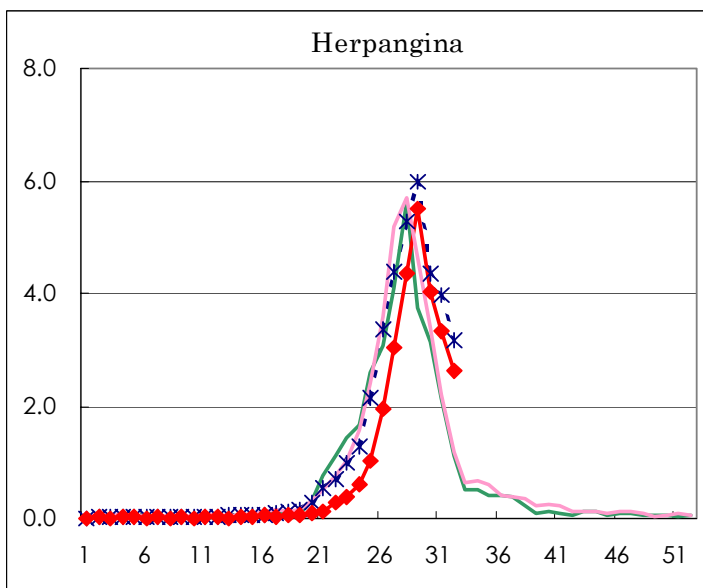
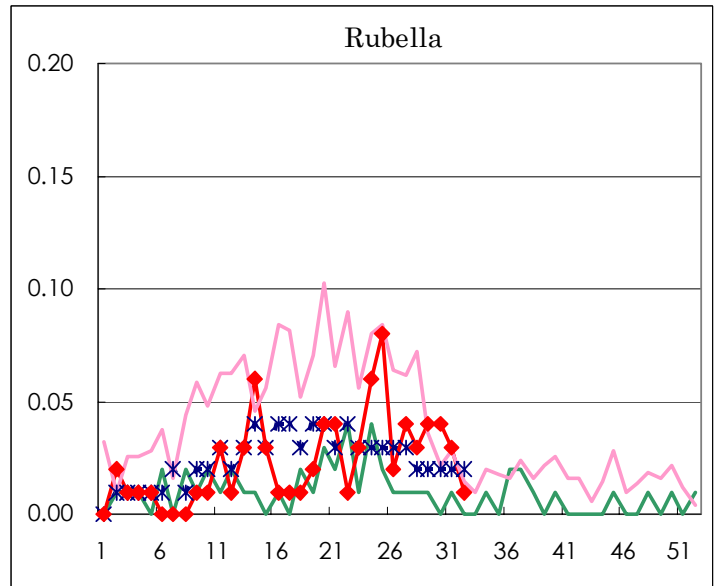
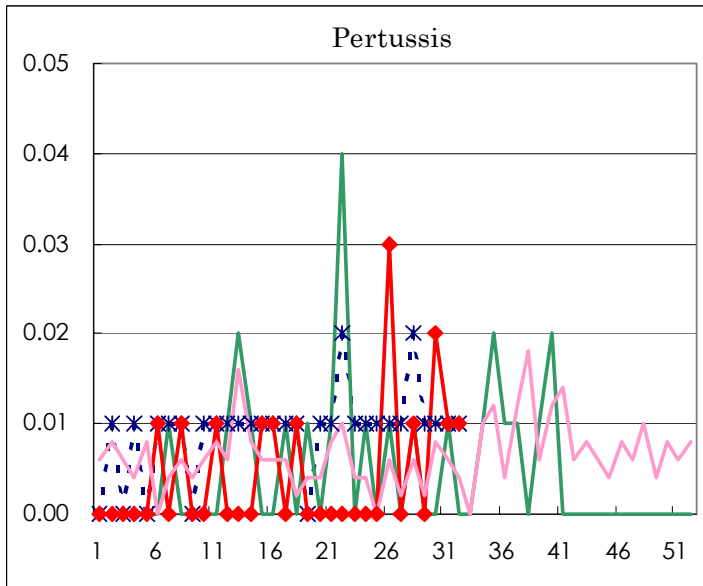
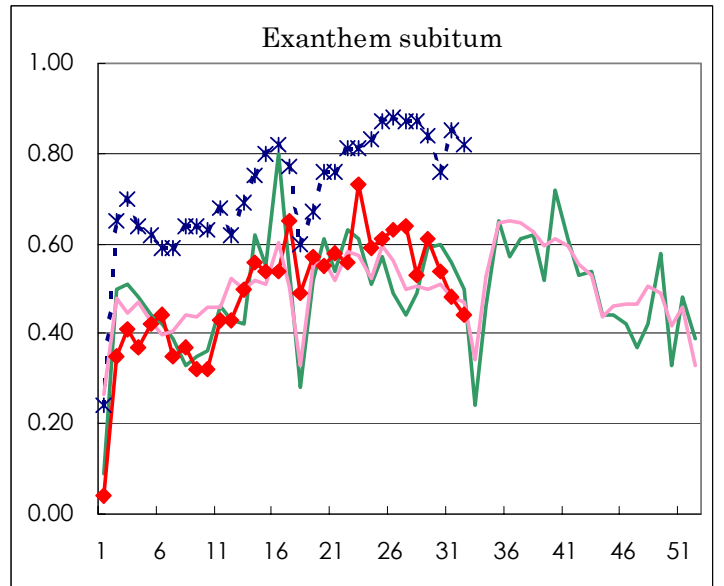
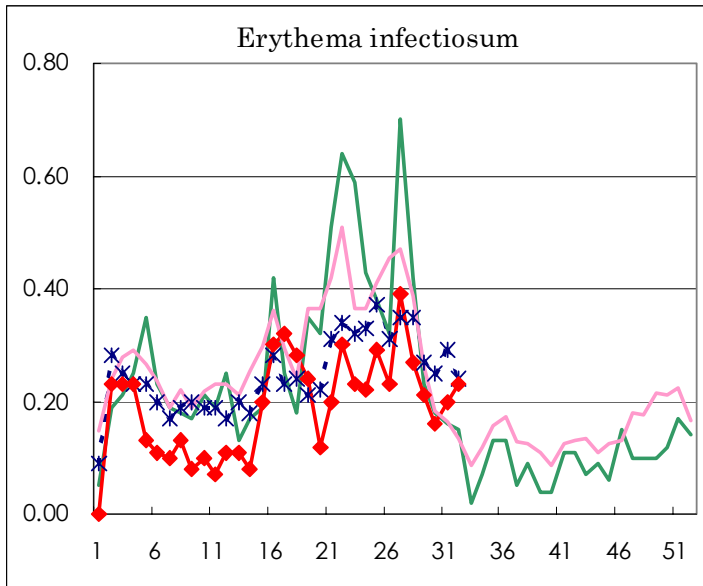
Number of patients with the diseases to be reported  
by the designated clinics and hospitals

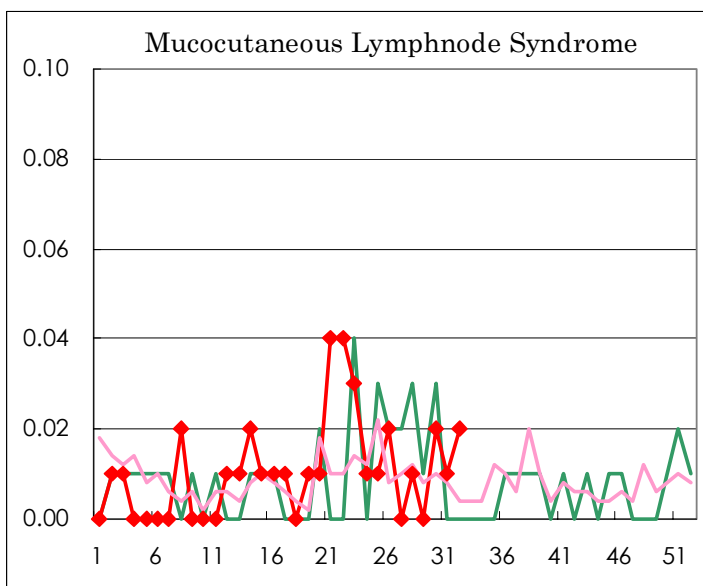
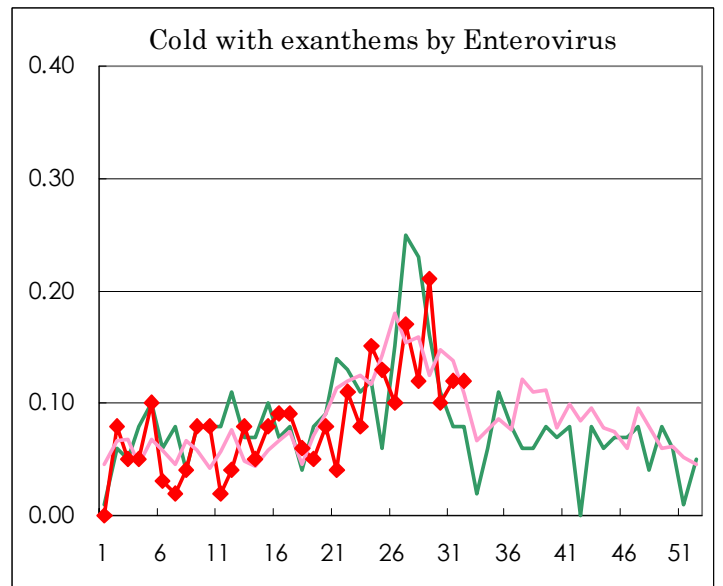
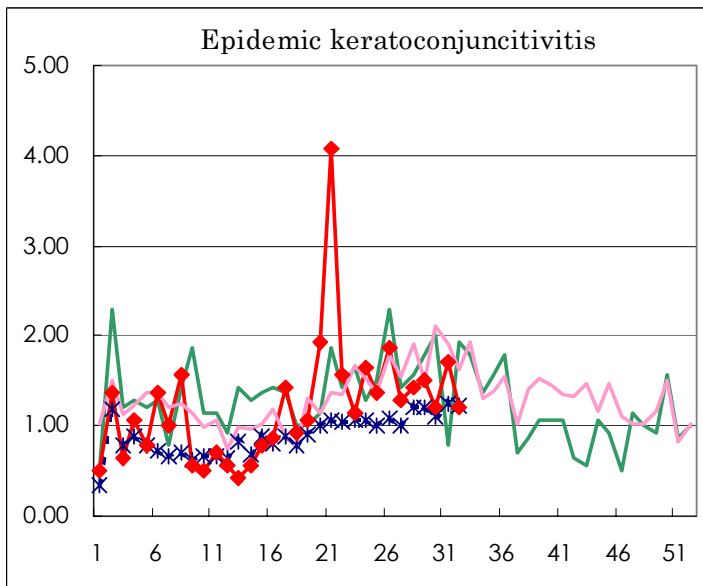
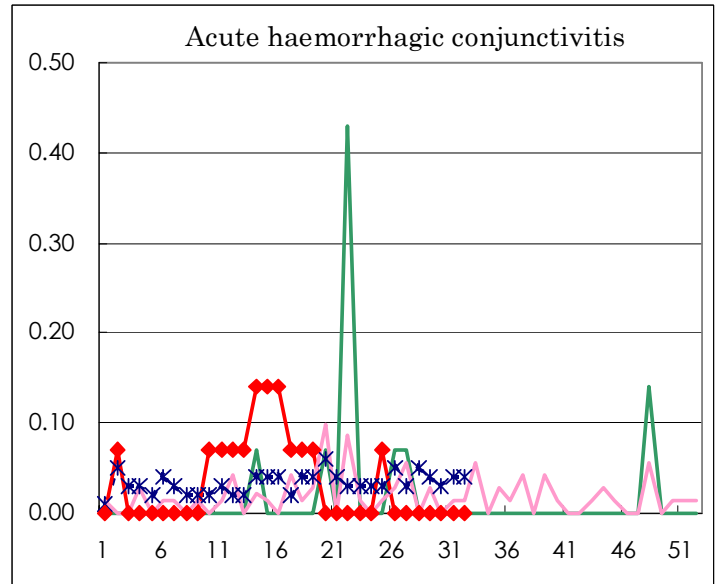
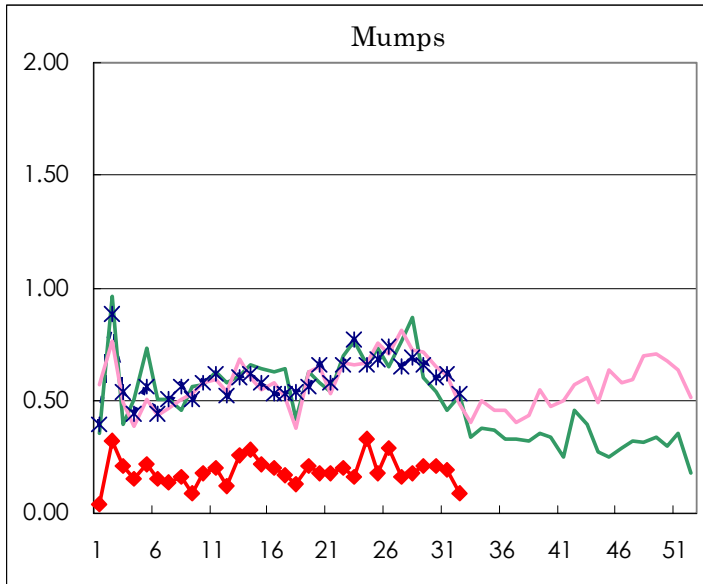
Diseases	Sex	Week(2003)				Total
		29th	30th	31st	32nd	
Influenza	M					13,398
	F					13,078
Pharygoconjunctival fever	M	43	39	38	<b>45</b>	532
	F	38	35	30	<b>23</b>	426
Group A streptococcal pharyngitis	M	26	38	24	<b>15</b>	1,433
	F	38	28	27	<b>12</b>	1,289
Infectious gastroenteritis	M	180	127	128	<b>101</b>	10,115
	F	137	102	116	<b>104</b>	9,436
Chickenpox	M	34	45	52	<b>46</b>	2,250
	F	38	53	34	<b>23</b>	1,918
Hand, foot, and mouth disease	M	467	353	264	<b>225</b>	2,997
	F	375	334	256	<b>198</b>	2,494
Erythema infectiosum	M	18	7	13	<b>20</b>	434
	F	12	16	15	<b>12</b>	431
Exanthem subitum	M	51	40	39	<b>39</b>	1,101
	F	36	36	29	<b>23</b>	1,112
Pertussis	M		3	1	<b>2</b>	14
	F			1		5
Rubella	M	2	1	2		51
	F	3	5	2	<b>1</b>	52
Herpangina	M	387	312	250	<b>196</b>	2,097
	F	393	259	223	<b>178</b>	1,894
Measles	M	1	3	4	<b>2</b>	165
	F	2	7	3		160
Mumps	M	21	15	15	<b>7</b>	496
	F	9	15	12	<b>6</b>	362
Cold with exanthems by Enterovirus	M	17	6	8	<b>9</b>	191
	F	13	8	9	<b>8</b>	184
Mucocutaneous Lymphnode Syndrome	M		2	1	<b>3</b>	22
	F		1			23
Acute hemorrhagic conjunctivitis	M					8
	F					7
Epidemic keratoconjunctivitis	M	16	12	17	<b>12</b>	321
	F	5	5	7	<b>5</b>	220
Acute encephalitis (excluding Japanese encephalitis)	M					2
	F					1
Bacterial meningitis	M					5
	F					6
Aseptic meningitis	M	6			<b>2</b>	20
	F	1		2	<b>2</b>	11
Mycoplasma pneumonia	M	2	1	3	<b>2</b>	40
	F	1		5	<b>1</b>	41
Chlamydial pneumonia (excluding psittacosis)	M	1		1		2
	F					
Measles in adults	M	6		1		75
	F	3		1		60

( Blank means 0. )

# Disease Trend Graph (weekly reported cases per fixed-point in comparison)







Tokyo Metropolitan Government  
**Infectious Disease Surveillance Center**

