

INFECTIOUS DISEASES WEEKLY REPORT

TOKYO IDWR

Tokyo Metropolitan Public Health Research Institute

26 August 2003 / Number 33

- Number of patients with the diseases required notifying all the cases
- Number of patients with the diseases to be reported by the designated clinics and hospitals
- Disease trend graph (weekly reported cases per fixed-point in comparison)

Surveillance System in Tokyo, Japan

The diseases which all physicians must report

All physicians must report to health centers the incidence of the diseases which are shown at page one. Health centers electronically report the individual case to Tokyo Metropolitan Infectious Disease Surveillance Center.

Fixed-point surveillance

The numbers of patients who visit designated clinics or hospitals during a week are reported to health centers (There are 37 in Tokyo). And they electronically report the numbers to Tokyo Metropolitan Infectious Disease Surveillance Center. We have about 200 fixed points (clinics and hospitals) in Tokyo.

1st Week is early January and 52nd Week is end of December.

Tokyo Metropolitan Infectious Disease Surveillance Center
Tokyo Metropolitan Public Health Research Institute

TEL:81-3-3363-3213 FAX:81-3-5332-7365

e-mail: idsc@tokyo-eiken.go.jp

URL: idsc.tokyo-eiken.go.jp/

Number of patients with the diseases which all physicians must report

Category	Diseases	Tokyo					Japan		
		30th	31st	32nd	33rd	Total	33rd	Total	
I	Ebola hemorrhagic fever								
	Crimean-Congo hemorrhagic fever								
	Plague								
	Marburg disease								
	Lassa fever								
II	Cholera					2	2	11	
	Shigellosis	2	2	2	1	57	13	272	
	Typhoid fever					14		35	
	Paratyphoid fever					4	1	22	
	Acute poliomyelitis								
	Diphtheria								
III	Enterohemorrhagic <i>Escherichia coli</i> infection	9	4	1	9	105	69	1266	
IV	Amebiasis	1	2	2	4	76	7	318	
	Echinococcosis							13	
	Yellow fever								
	Psittacosis							33	
	Relapsing fever								
	Acute viral hepatitis	1		1	1	54	6	499	
	Q fever					1		6	
	Rabies								
	Cryptosporidiosis	1	1			4		5	
	Creutzfeldt-Jakob Disease		2		1	11	1	74	
	Sever invasive streptococcal infections					4		38	
	Acquired immunodeficiency syndrome	9	6	11	10	216	15	541	
	Coccidioidomycosis							1	
	Giardiasis	1		1		24	1	65	
	Hemorrhagic fever with renal syndrome								
	Meningococcal meningitis					3		13	
	Congenital rubella syndrome							1	
	Anthrax								
	Scrub typhus (Tsutsugamushi disease)							134	
	Dengue fever		1	1		10		21	
	Japanese spotted fever							19	
	Japanese encephalitis								
	Infant botulism								
	Syphilis		4				48		307
	Tetanus						3	1	41
	Vancomycin-resistant <i>enterococcus</i> infection						3		42
	Hantavirus pulmonary syndrome								
	Helpes B virus infection								
	Brucellosis								
	Epidemic typhus								
Malaria		1	2	1	21	1	49		
Lyme disease								4	
Legionellosis			1	1	9	7	86		
West Nile fever									

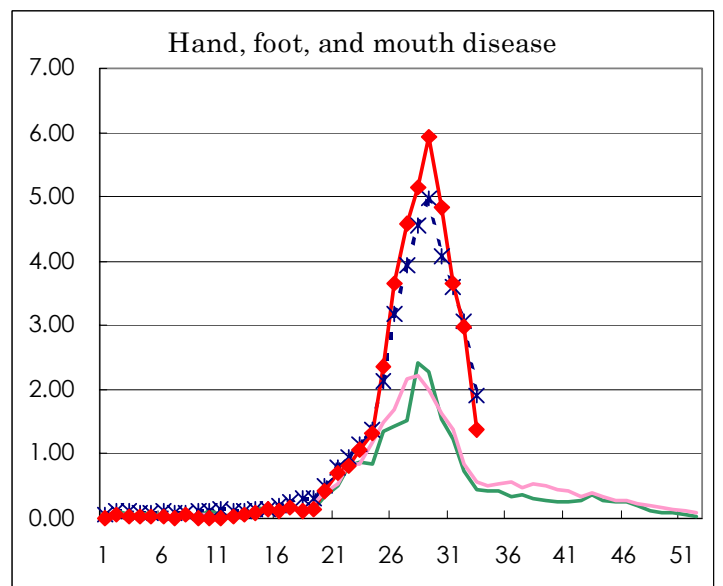
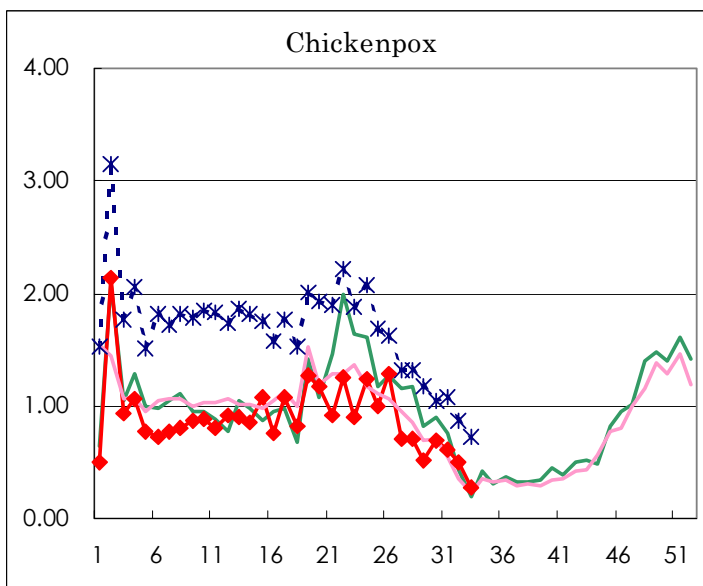
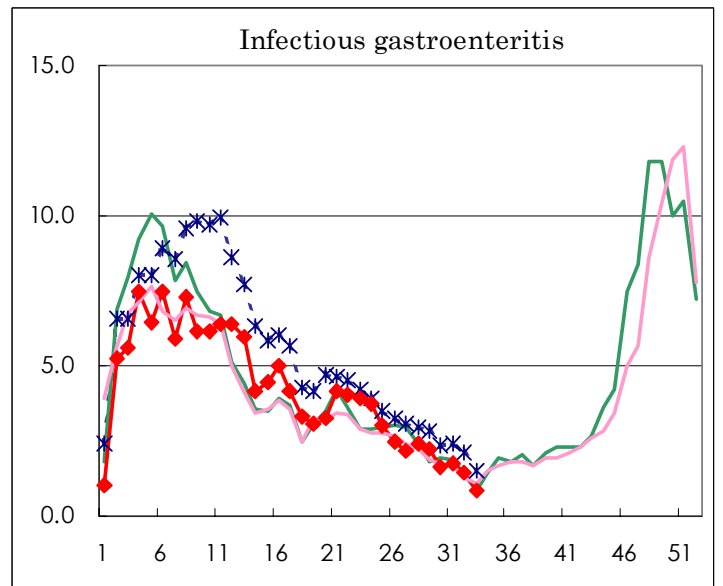
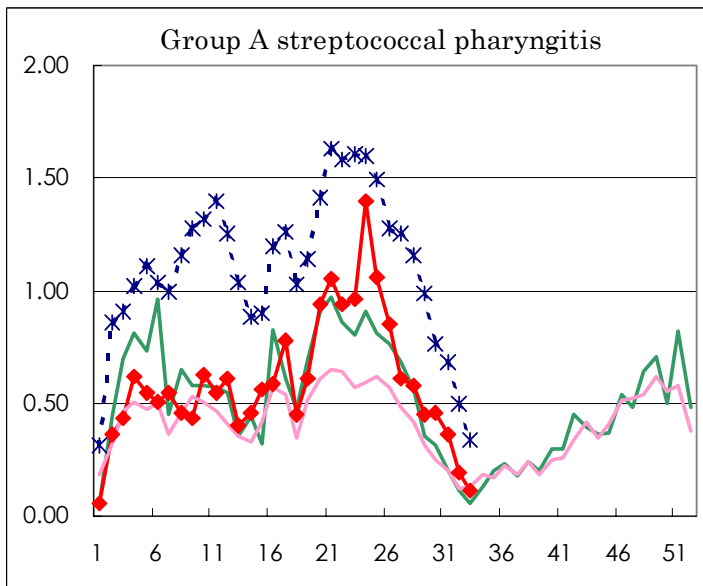
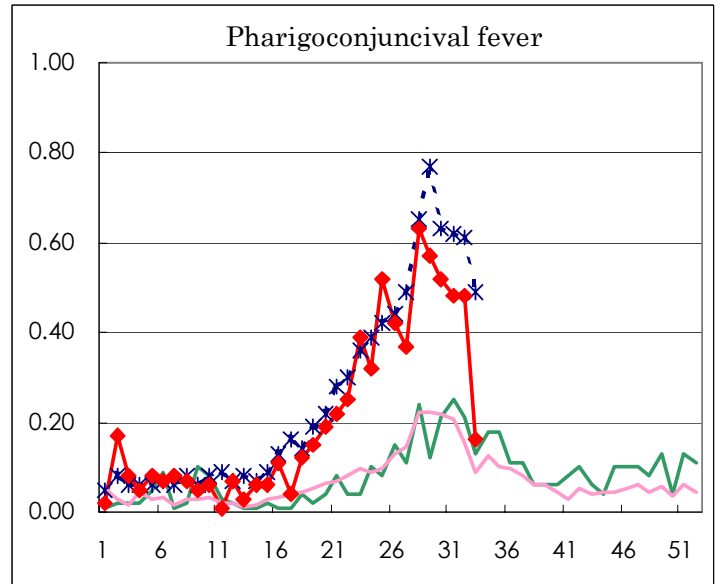
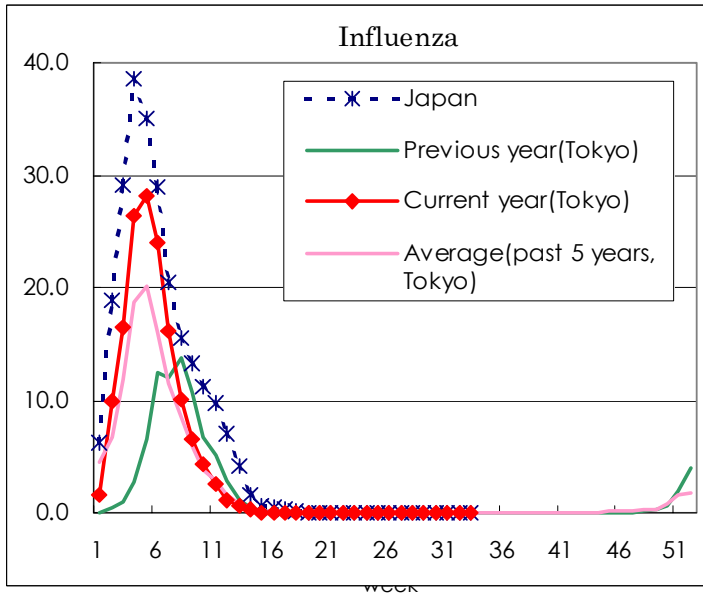
(Blank means 0.)

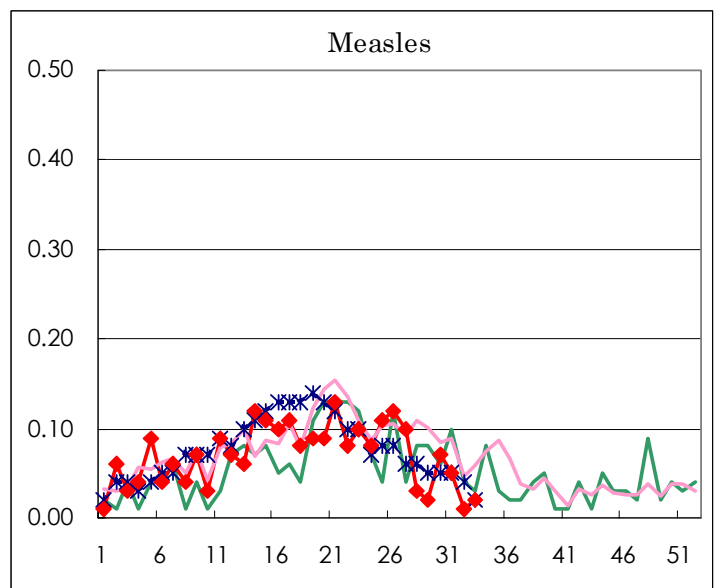
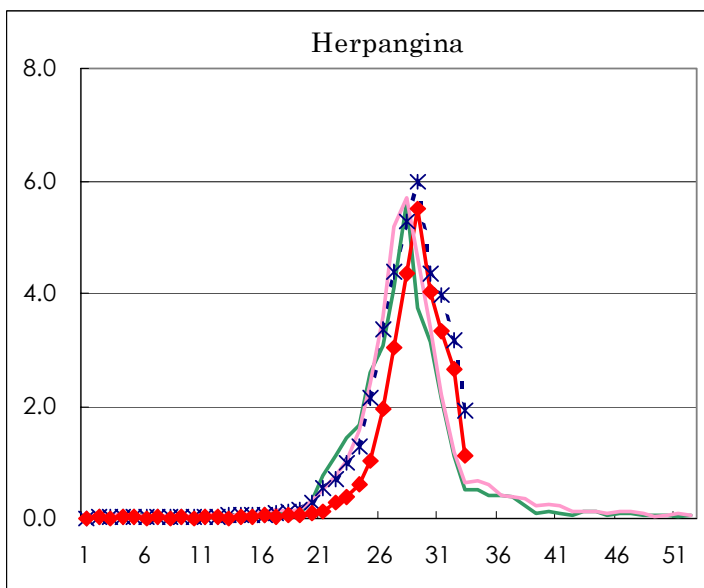
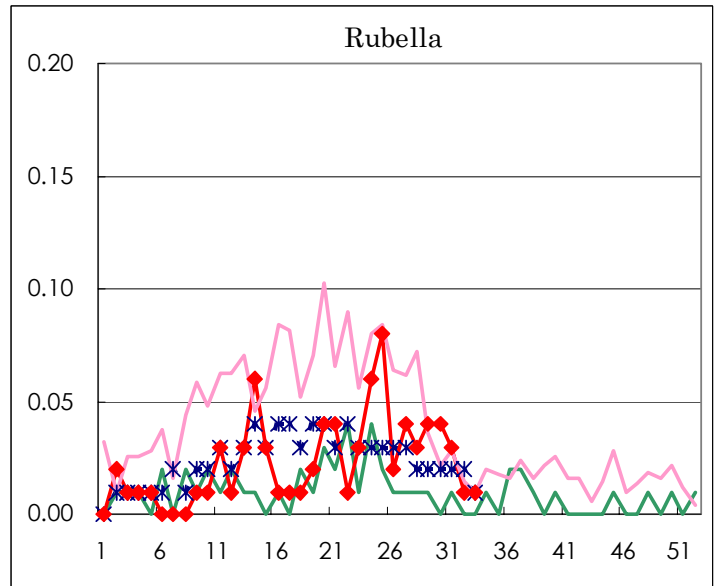
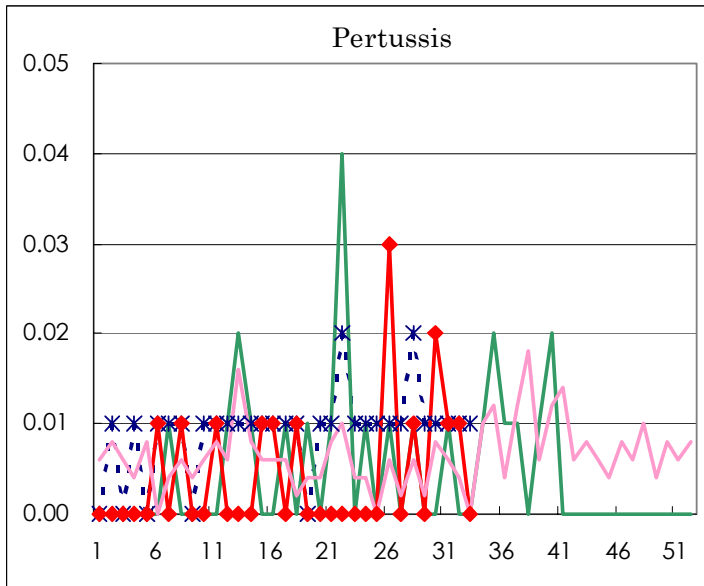
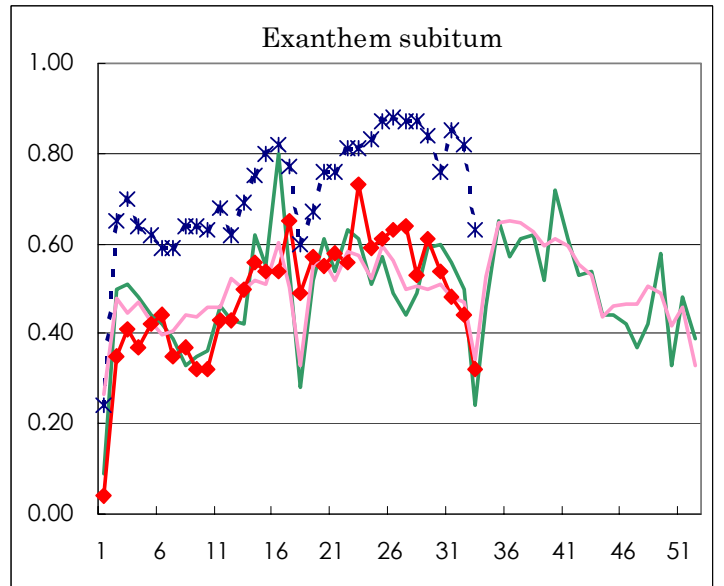
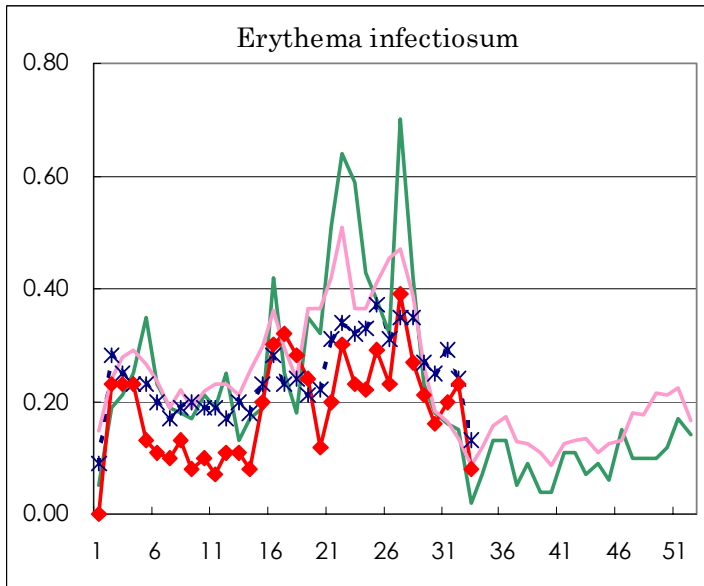
Number of patients with the diseases to be reported
by the designated clinics and hospitals

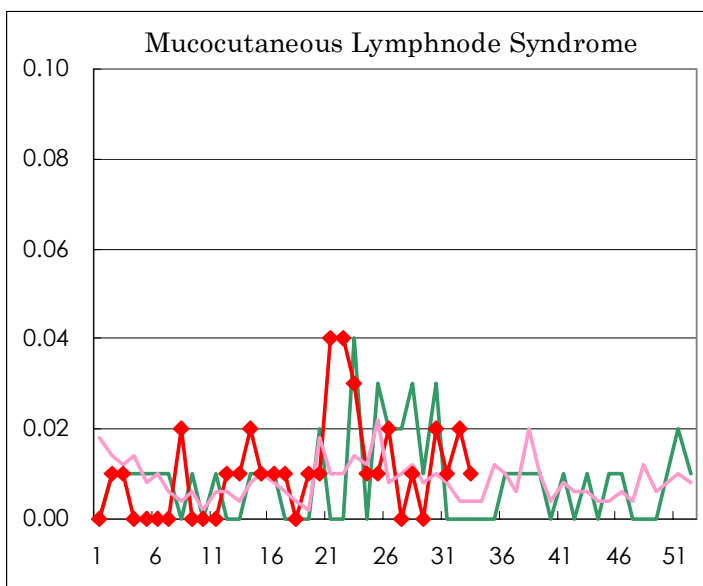
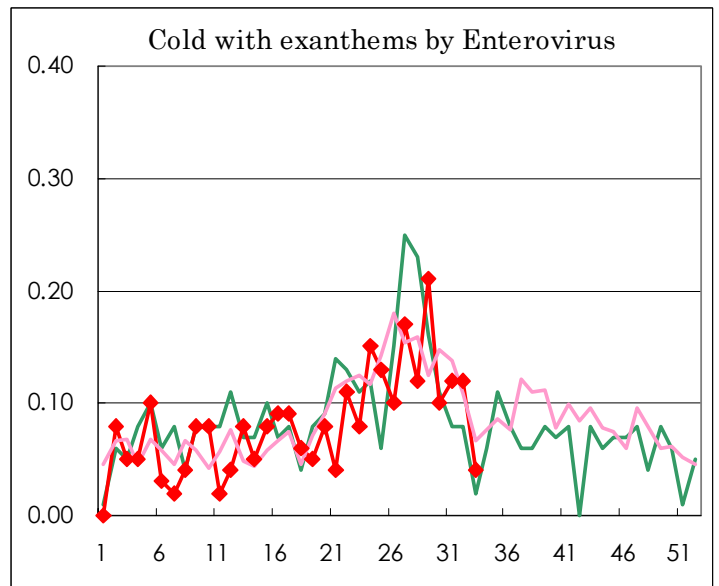
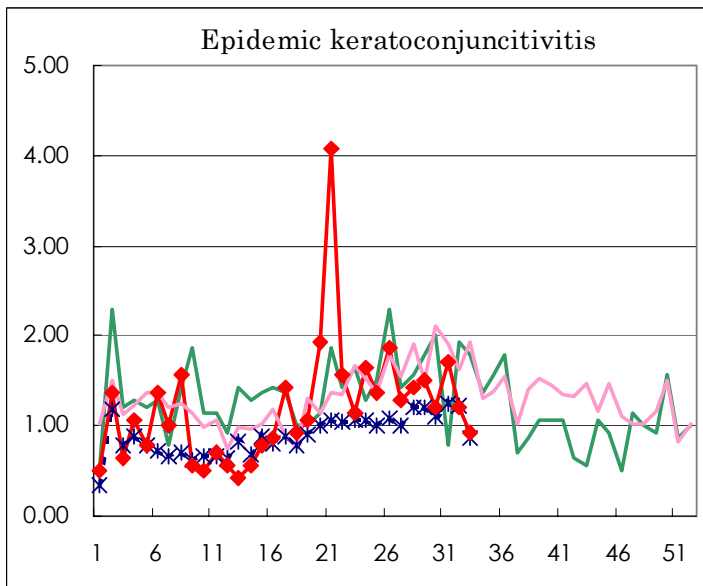
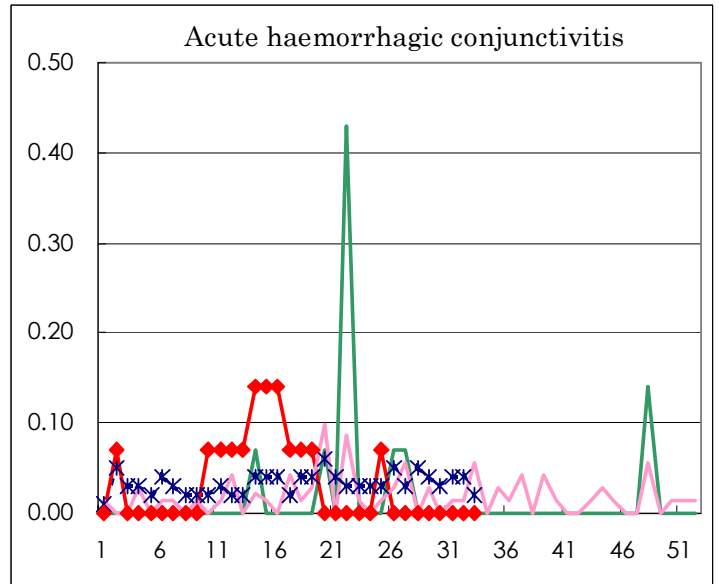
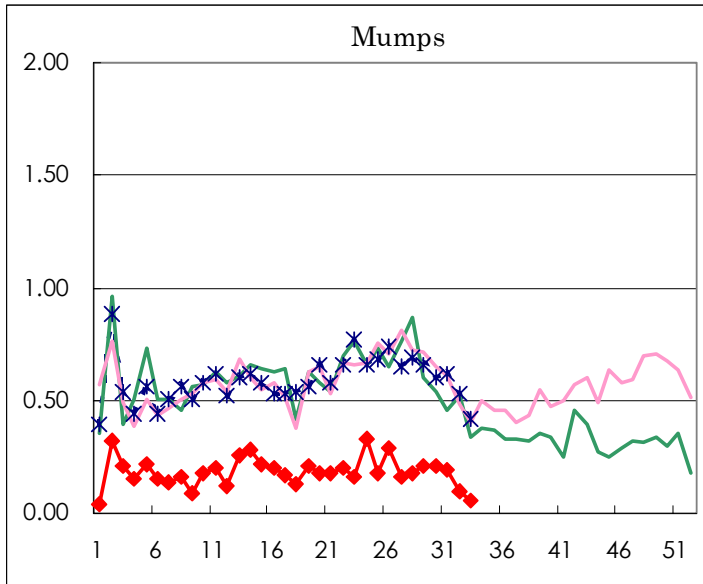
Diseases	Sex	Week(2003)				Total
		30th	31st	32nd	33rd	
Influenza	M					13,398
	F					13,078
Pharygoconjunctival fever	M	39	38	45	16	548
	F	35	30	23	7	433
Group A streptococcal pharyngitis	M	38	24	15	9	1,442
	F	28	27	12	6	1,295
Infectious gastroenteritis	M	127	128	101	66	10,181
	F	102	116	104	55	9,491
Chickenpox	M	45	52	46	22	2,272
	F	53	34	23	18	1,936
Hand, foot, and mouth disease	M	353	264	225	104	3,101
	F	334	256	198	93	2,587
Erythema infectiosum	M	7	13	20	4	438
	F	16	15	13	8	440
Exanthem subitum	M	40	39	39	22	1,123
	F	36	29	23	24	1,136
Pertussis	M	3	1	2		14
	F		1			5
Rubella	M	1	2		1	52
	F	5	2	1		52
Herpangina	M	312	250	196	75	2,172
	F	259	223	180	85	1,981
Measles	M	3	4	2	3	168
	F	7	3			160
Mumps	M	15	15	8	4	501
	F	15	12	6	4	366
Cold with exanthems by Enterovirus	M	6	8	9	2	193
	F	8	9	8	4	188
Mucocutaneous Lymphnode Syndrome	M	2	1	3	1	23
	F	1			1	24
Acute hemorrhagic conjunctivitis	M					8
	F					7
Epidemic keratoconjunctivitis	M	12	17	12	6	327
	F	5	7	5	7	227
Acute encephalitis (excluding Japanese encephalitis)	M					2
	F					1
Bacterial meningitis	M					5
	F					6
Aseptic meningitis	M			2	2	22
	F		2	2	1	12
Mycoplasma pneumonia	M	1	3	2		40
	F		5	1		42
Chlamydial pneumonia (excluding psittacosis)	M		1			2
	F					
Measles in adults	M		1			75
	F		1			60

(Blank means 0.)

Disease Trend Graph (weekly reported cases per fixed-point in comparison)







Tokyo Metropolitan Government
Infectious Disease Surveillance Center

