

INFECTIOUS DISEASES WEEKLY REPORT

TOKYO IDWR

Tokyo Metropolitan Public Health Research Institute

2 September 2003 / Number 34

- Number of patients with the diseases required notifying all the cases
- Number of patients with the diseases to be reported by the designated clinics and hospitals
- Disease trend graph (weekly reported cases per fixed-point in comparison)

Surveillance System in Tokyo, Japan

The diseases which all physicians must report

All physicians must report to health centers the incidence of the diseases which are shown at page one. Health centers electronically report the individual case to Tokyo Metropolitan Infectious Disease Surveillance Center.

Fixed-point surveillance

The numbers of patients who visit designated clinics or hospitals during a week are reported to health centers (There are 37 in Tokyo). And they electronically report the numbers to Tokyo Metropolitan Infectious Disease Surveillance Center. We have about 200 fixed points (clinics and hospitals) in Tokyo.

1st Week is early January and 52nd Week is end of December.

Tokyo Metropolitan Infectious Disease Surveillance Center
Tokyo Metropolitan Public Health Research Institute

TEL:81-3-3363-3213 FAX:81-3-5332-7365

e-mail: idsc@tokyo-eiken.go.jp

URL: idsc.tokyo-eiken.go.jp/

Number of patients with the diseases which all physicians must report

Category	Diseases	Tokyo					Japan	
		31st	32nd	33rd	34th	Total	34th	Total
I	Ebola hemorrhagic fever							
	Crimean-Congo hemorrhagic fever							
	Plague							
	Marburg disease							
	Lassa fever							
II	Cholera					2	1	12
	Shigellosis	2	2	1	7	64	17	292
	Typhoid fever				1	15		36
	Paratyphoid fever					4		22
	Acute poliomyelitis							
	Diphtheria							
III	Enterohemorrhagic <i>Escherichia coli</i> infection	4	1	9	8	113	149	1483
IV	Amebiasis	2	2	4		76	2	322
	Echinococcosis							13
	Yellow fever							
	Psittacosis				1	1	1	34
	Relapsing fever							
	Acute viral hepatitis		1	1		54		501
	Q fever					1		6
	Rabies							
	Cryptosporidiosis	1				4		5
	Creutzfeldt-Jakob Disease	2		1		11		74
	Sever invasive streptococcal infections				1	5		40
	Acquired immunodeficiency syndrome	6	11	10	10	226	8	559
	Coccidioidomycosis							1
	Giardiasis		1			24	1	66
	Hemorrhagic fever with renal syndrome							
	Meningococcal meningitis					3	1	15
	Congenital rubella syndrome							1
	Anthrax							
	Scrub typhus (Tsutsugamushi disease)							134
	Dengue fever	1	1			10		21
	Japanese spotted fever						1	22
	Japanese encephalitis							
	Infant botulism							
	Syphilis	4				48	1	309
	Tetanus					3	2	43
	Vancomycin-resistant <i>enterococcus</i> infection					3		42
	Hantavirus pulmonary syndrome							
	Helpes B virus infection							
	Brucellosis							
	Epidemic typhus							
Malaria	1	2	1	1	22	3	52	
Lyme disease							4	
Legionellosis		1	1	1	10		87	
West Nile fever								

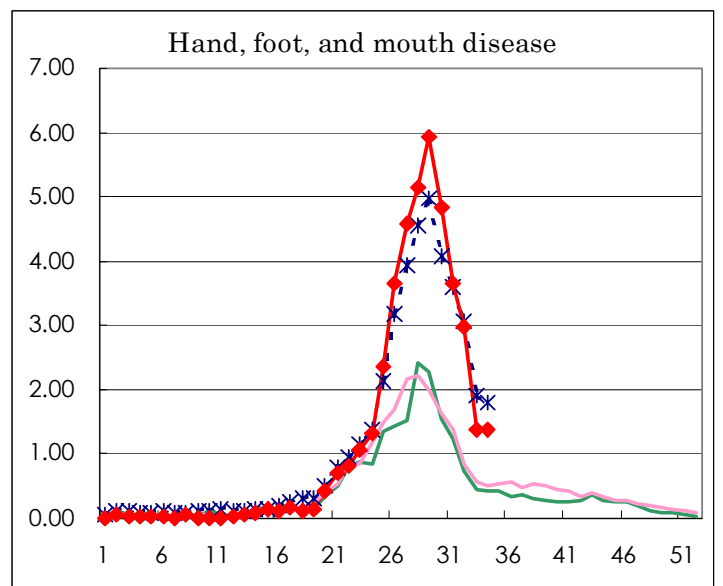
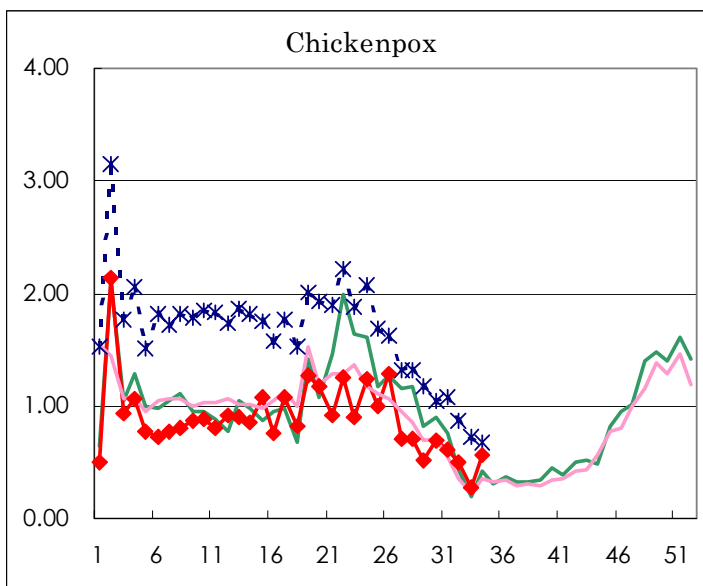
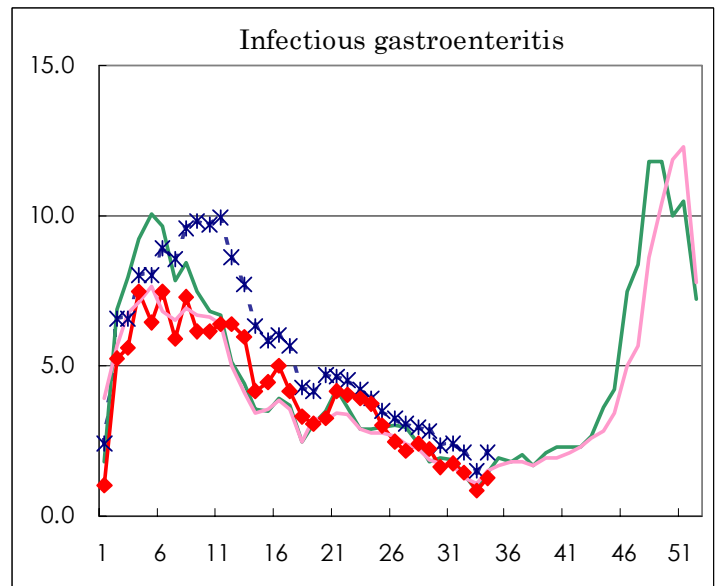
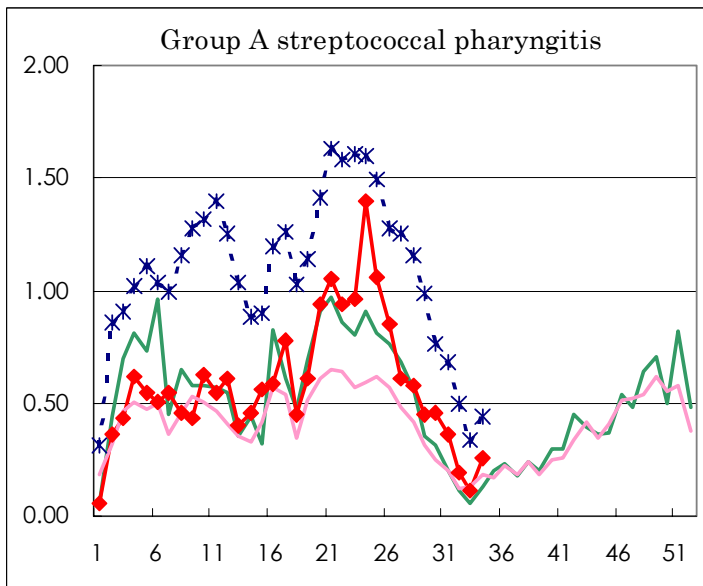
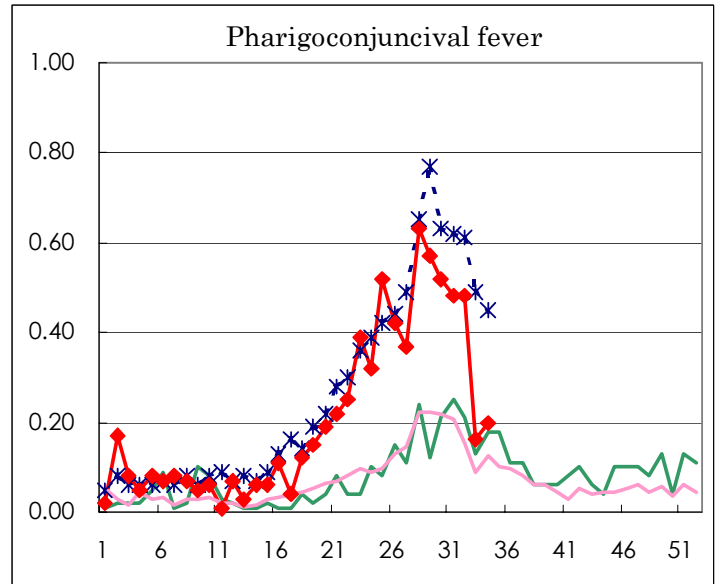
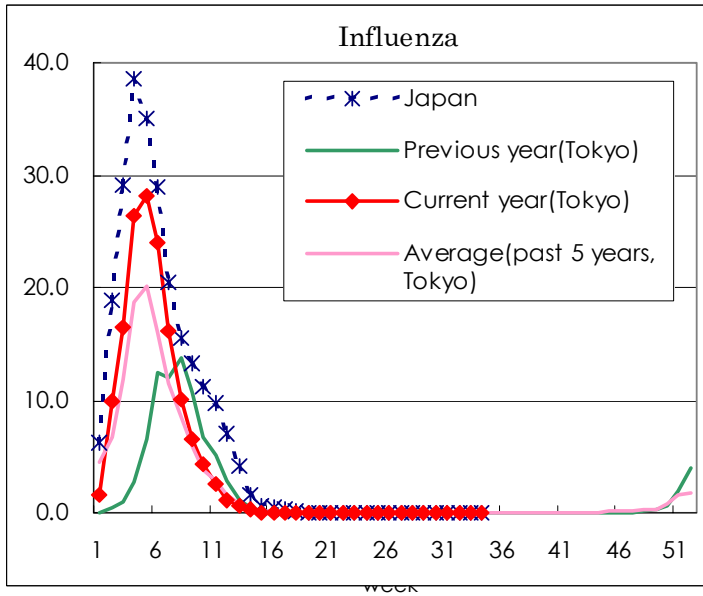
(Blank means 0.)

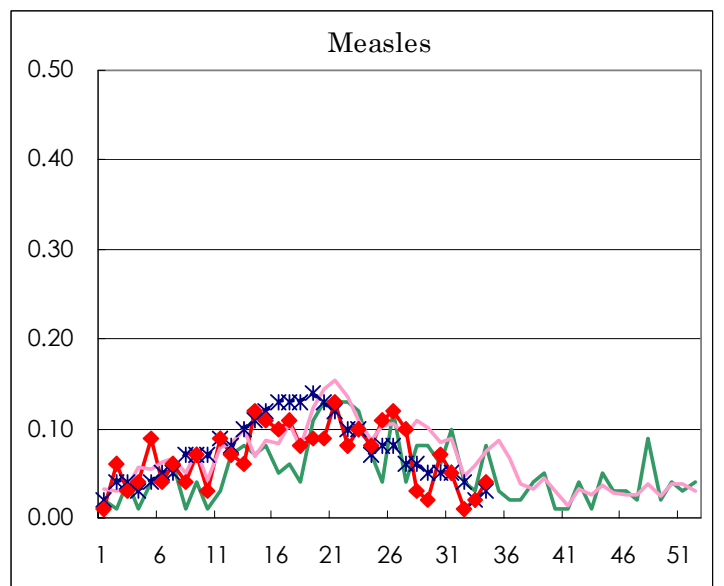
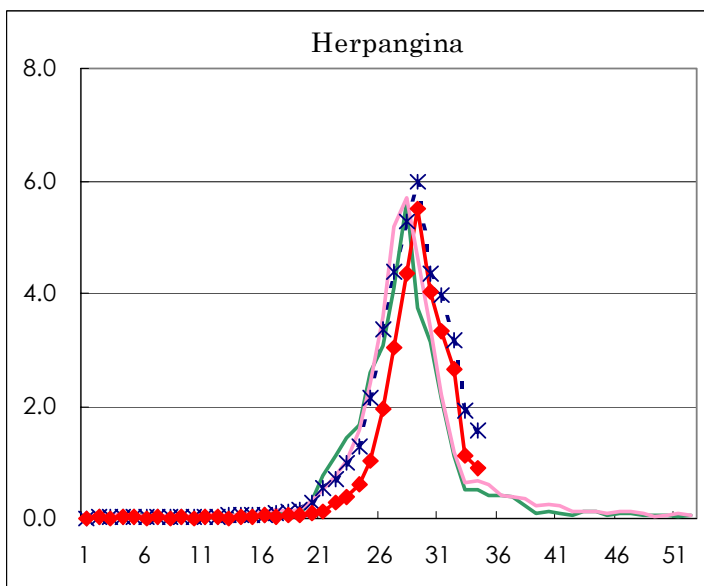
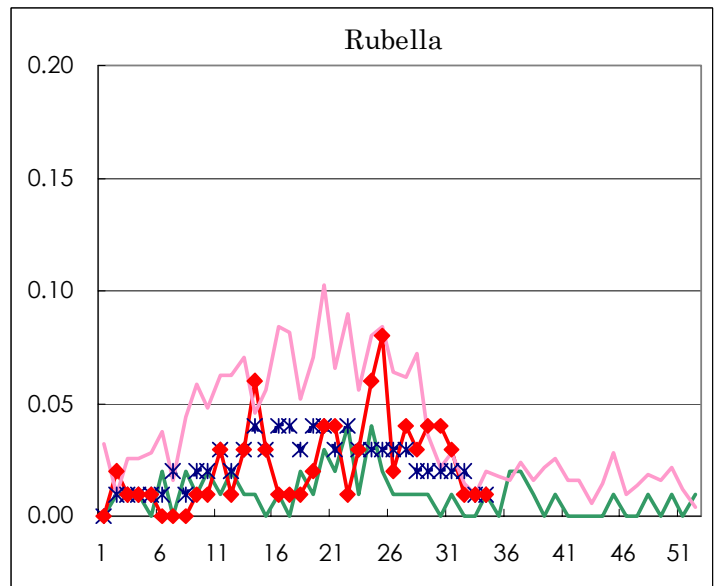
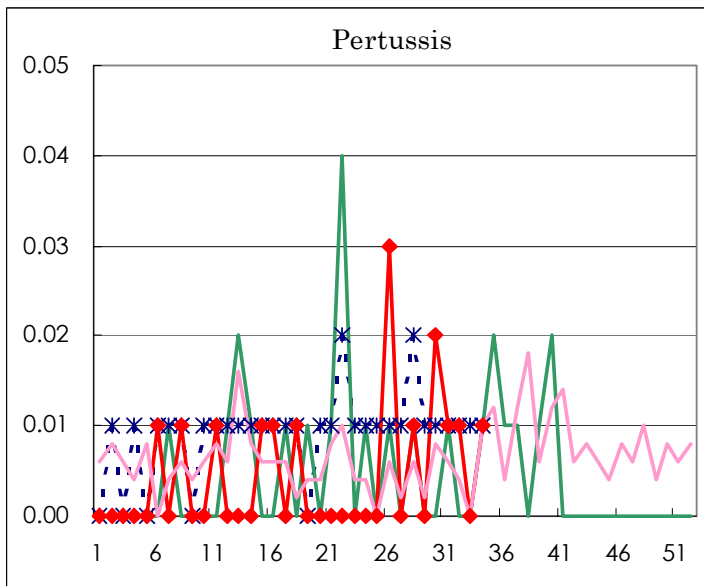
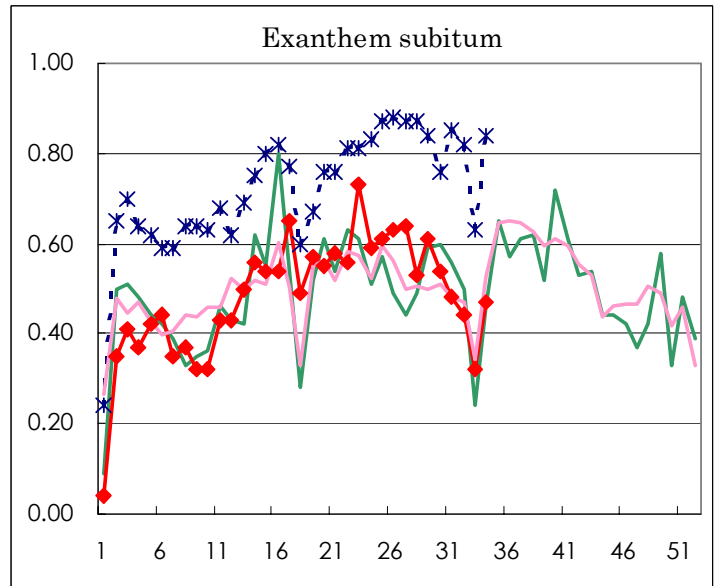
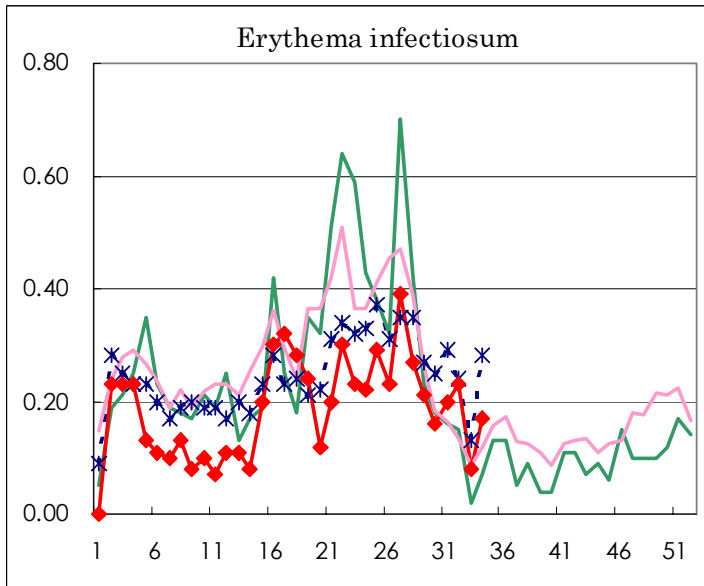
Number of patients with the diseases to be reported
by the designated clinics and hospitals

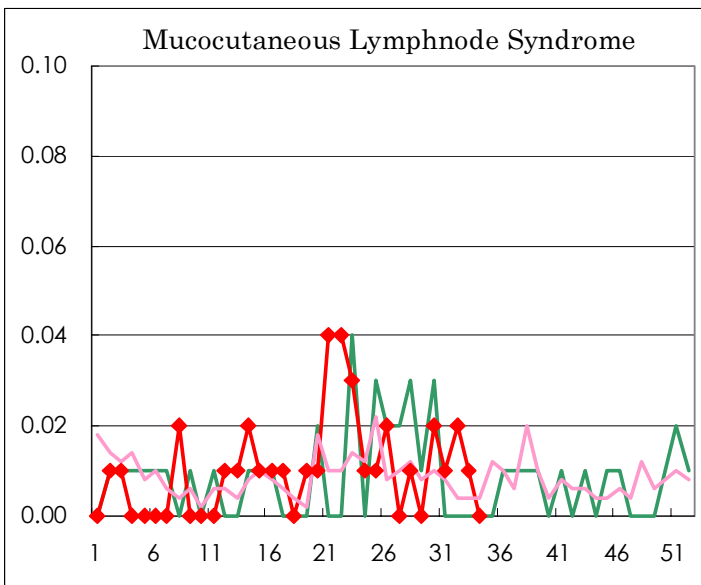
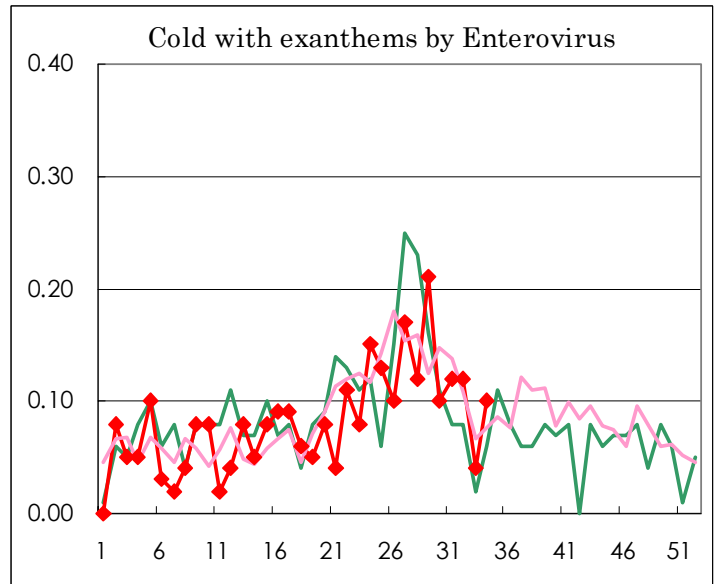
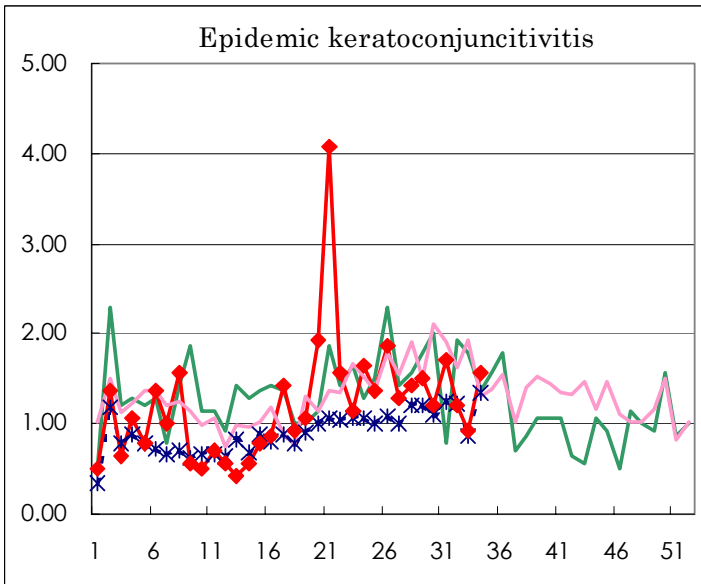
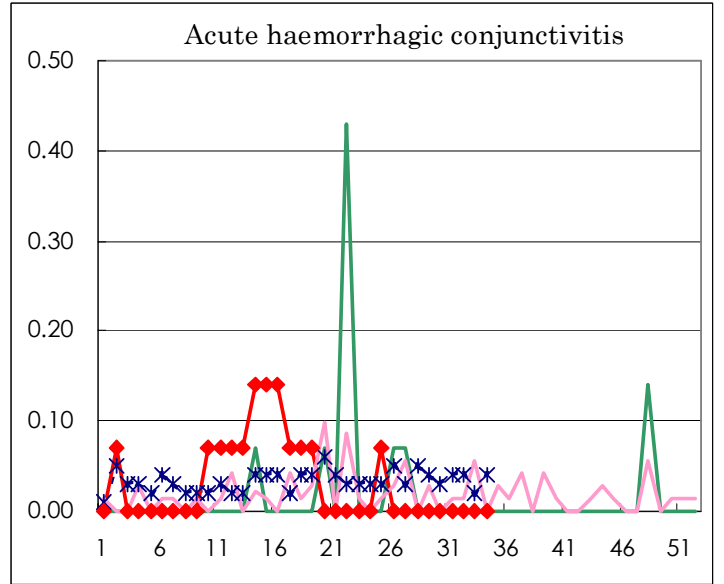
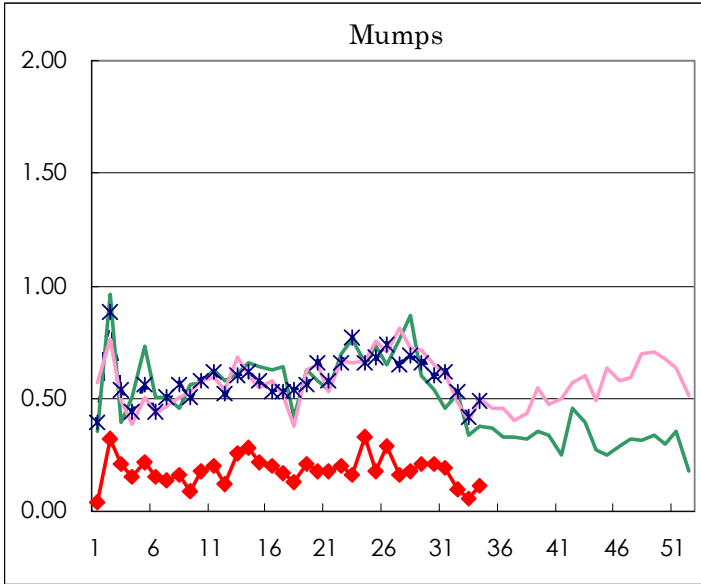
Diseases	Sex	Week(2003)				Total
		31st	32nd	33rd	34th	
Influenza	M					13,398
	F					13,078
Pharygoconjunctival fever	M	38	45	16	15	563
	F	30	23	7	14	447
Group A streptococcal pharyngitis	M	24	15	9	19	1,461
	F	27	12	6	18	1,313
Infectious gastroenteritis	M	128	101	66	92	10,273
	F	116	104	55	90	9,581
Chickenpox	M	52	46	22	49	2,321
	F	34	23	18	32	1,968
Hand, foot, and mouth disease	M	264	225	104	109	3,210
	F	256	198	93	85	2,672
Erythema infectiosum	M	13	20	4	13	451
	F	15	13	8	11	451
Exanthem subitum	M	39	39	22	39	1,162
	F	29	23	24	28	1,164
Pertussis	M	1	2		1	15
	F	1				5
Rubella	M	2		1	1	53
	F	2	1		1	53
Herpangina	M	250	196	75	63	2,235
	F	223	180	85	66	2,047
Measles	M	4	2	3	4	172
	F	3			2	162
Mumps	M	15	8	4	8	509
	F	12	6	4	7	373
Cold with exanthems by Enterovirus	M	8	9	2	4	197
	F	9	8	4	10	198
Mucocutaneous Lymphnode Syndrome	M	1	3	1		23
	F			1		24
Acute hemorrhagic conjunctivitis	M					8
	F					7
Epidemic keratoconjunctivitis	M	17	12	6	14	341
	F	7	5	7	8	235
Acute encephalitis (excluding Japanese encephalitis)	M					2
	F					1
Bacterial meningitis	M					5
	F					6
Aseptic meningitis	M		2	2	6	28
	F	2	2	1	3	15
Mycoplasma pneumonia	M	3	2		2	42
	F	5	1		1	43
Chlamydial pneumonia (excluding psittacosis)	M	1				2
	F					
Measles in adults	M	1				75
	F	1				60

(Blank means 0.)

Disease Trend Graph (weekly reported cases per fixed-point in comparison)







Tokyo Metropolitan Government
Infectious Disease Surveillance Center

