

INFECTIOUS DISEASES WEEKLY REPORT

TOKYO IDWR

Tokyo Metropolitan Public Health Research Institute

16 September 2003 / Number 36

- Number of patients with the diseases required notifying all the cases
- Number of patients with the diseases to be reported by the designated clinics and hospitals
- Disease trend graph (weekly reported cases per fixed-point in comparison)

Surveillance System in Tokyo, Japan

The diseases which all physicians must report

All physicians must report to health centers the incidence of the diseases which are shown at page one. Health centers electronically report the individual case to Tokyo Metropolitan Infectious Disease Surveillance Center.

Fixed-point surveillance

The numbers of patients who visit designated clinics or hospitals during a week are reported to health centers (There are 37 in Tokyo). And they electronically report the numbers to Tokyo Metropolitan Infectious Disease Surveillance Center. We have about 200 fixed points (clinics and hospitals) in Tokyo.

1st Week is early January and 52nd Week is end of December.

Tokyo Metropolitan Infectious Disease Surveillance Center
Tokyo Metropolitan Public Health Research Institute

TEL:81-3-3363-3213 FAX:81-3-5332-7365

e-mail: idsc@tokyo-eiken.go.jp

URL: idsc.tokyo-eiken.go.jp/

Number of patients with the diseases which all physicians must report

Category	Diseases	Tokyo					Japan	
		33rd	34th	35th	36th	Total	36th	Total
I	Ebola hemorrhagic fever							
	Crimean-Congo hemorrhagic fever							
	Plague							
	Marburg disease							
	Lassa fever							
II	Cholera					2		13
	Shigellosis	1	7		4	68	8	312
	Typhoid fever		1			15	1	39
	Paratyphoid fever					4		22
	Acute poliomyelitis							
	Diphtheria							
III	Enterohemorrhagic <i>Escherichia coli</i> infection	9	8	4	6	123	120	1785
IV	Amebiasis	4		3	5	84	5	343
	Echinococcosis							14
	Yellow fever							
	Psittacosis		1			1		34
	Relapsing fever							
	Acute viral hepatitis	1				54	3	516
	Q fever					1		6
	Rabies							
	Cryptosporidiosis					4		5
	Creutzfeldt-Jakob Disease	1				11		77
	Sever invasive streptococcal infections		1			5		42
	Acquired immunodeficiency syndrome	10	10	9	11	245	8	595
	Coccidioidomycosis							1
	Giardiasis			1		25	1	70
	Hemorrhagic fever with renal syndrome							
	Meningococcal meningitis				1	4	1	16
	Congenital rubella syndrome							1
	Anthrax							
	Scrub typhus (Tsutsugamushi disease)							135
	Dengue fever				1	11	1	22
	Japanese spotted fever						2	32
	Japanese encephalitis							
	Infant botulism							
	Syphilis			1	2	51	7	334
	Tetanus					3	1	45
	Vancomycin-resistant <i>enterococcus</i> infection					3		43
	Hantavirus pulmonary syndrome							
	Helpes B virus infection							
	Brucellosis							
	Epidemic typhus							
Malaria	1	1			22		52	
Lyme disease							4	
Legionellosis	1	1		1	11	3	99	
West Nile fever								

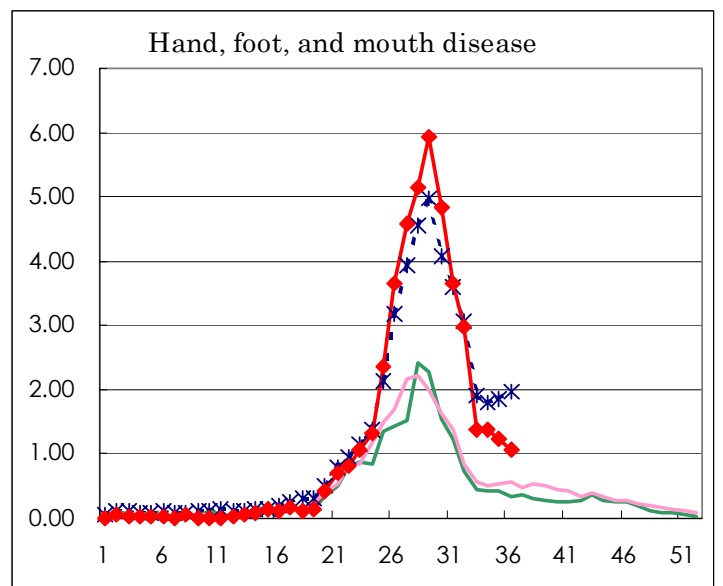
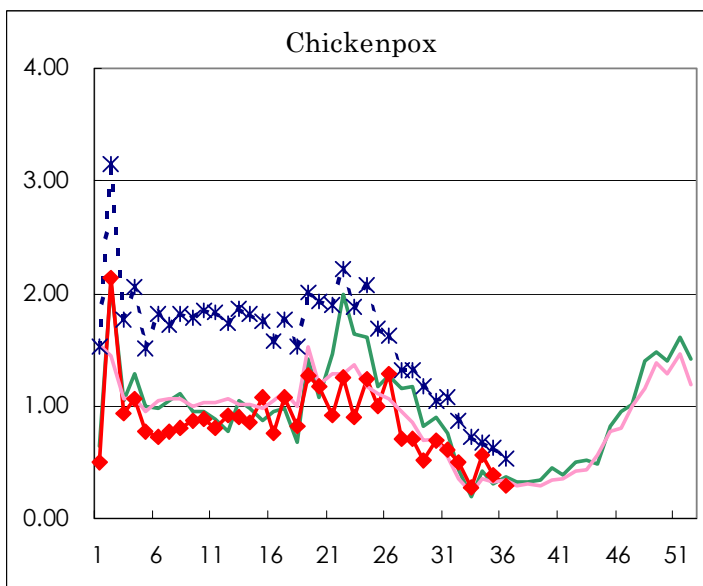
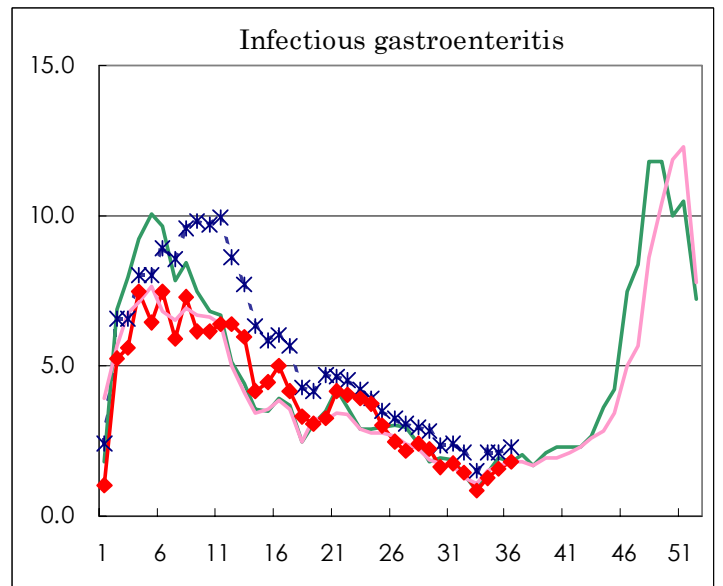
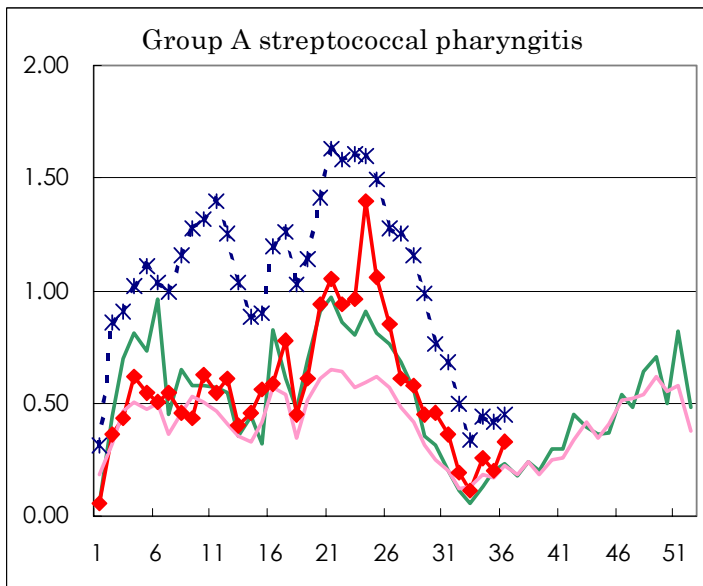
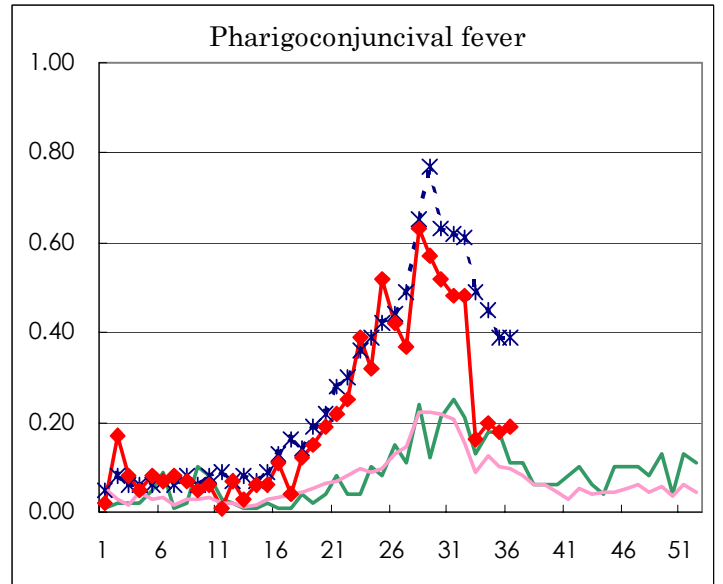
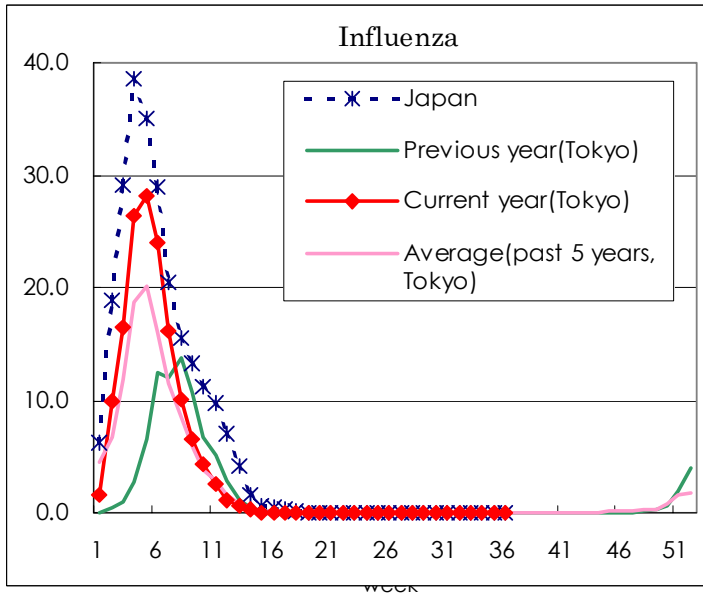
(Blank means 0.)

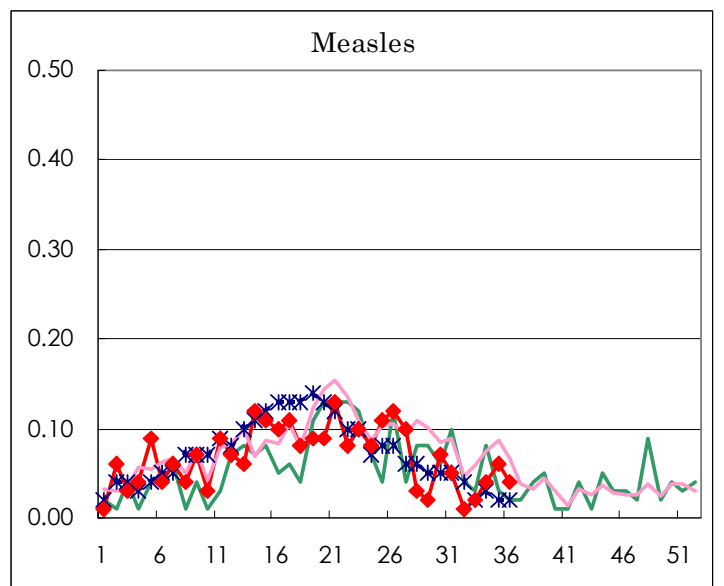
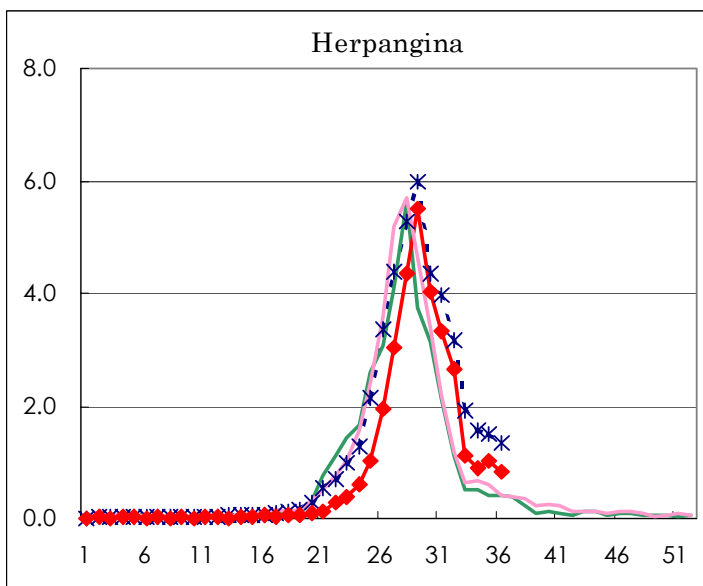
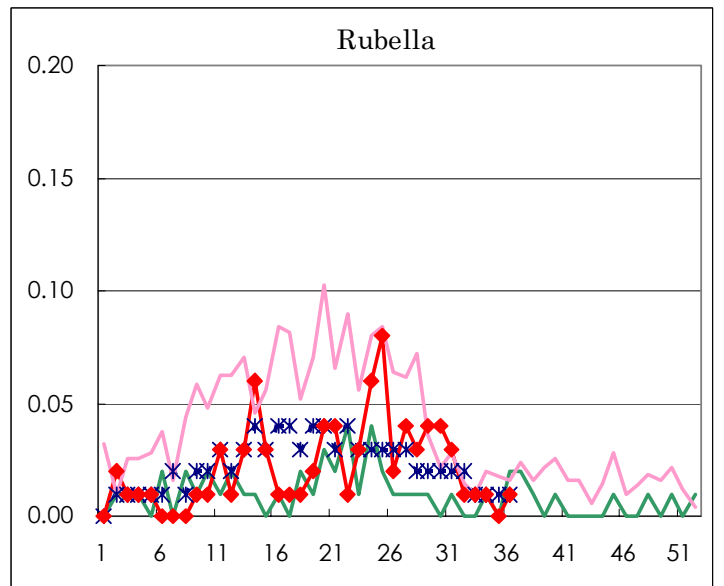
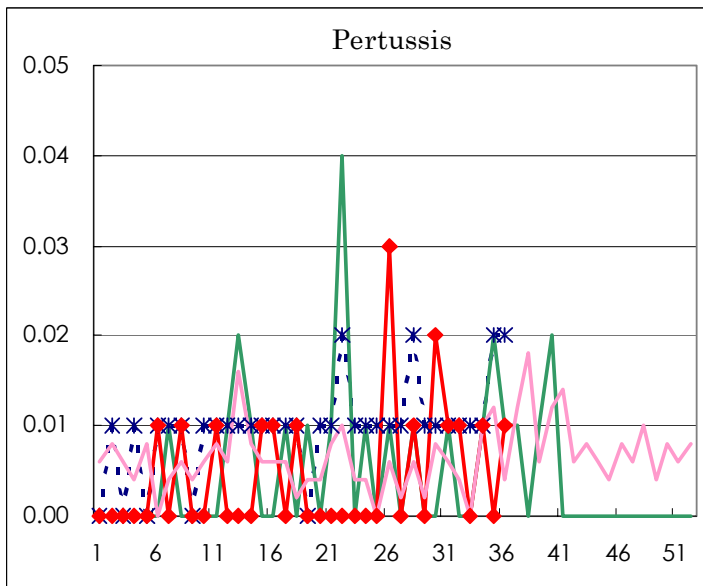
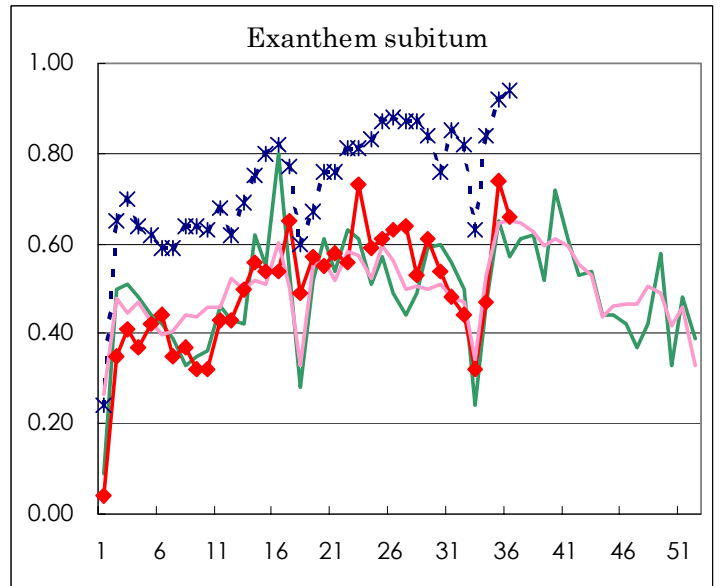
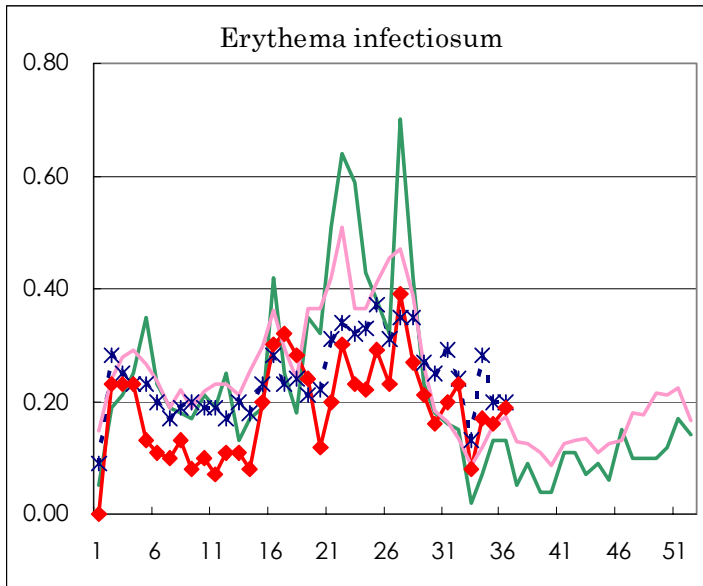
Number of patients with the diseases to be reported
by the designated clinics and hospitals

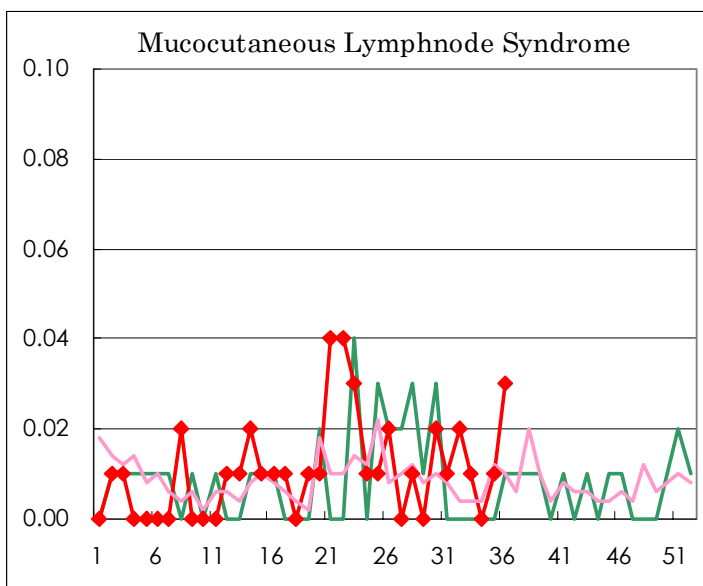
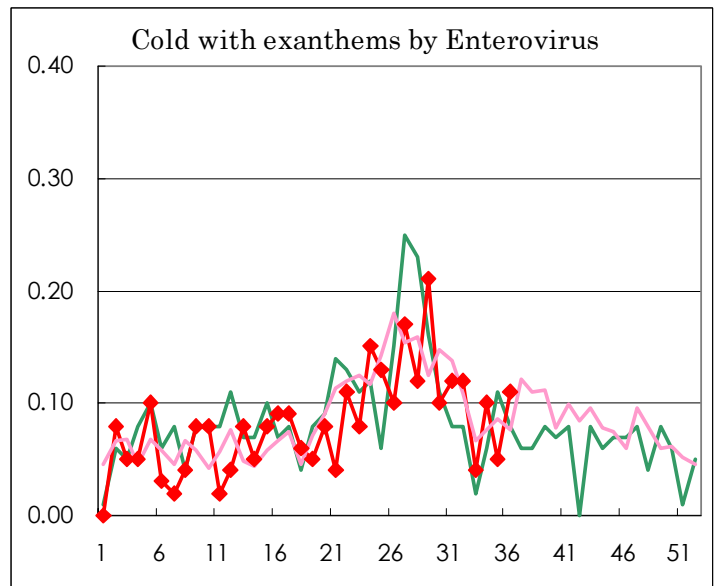
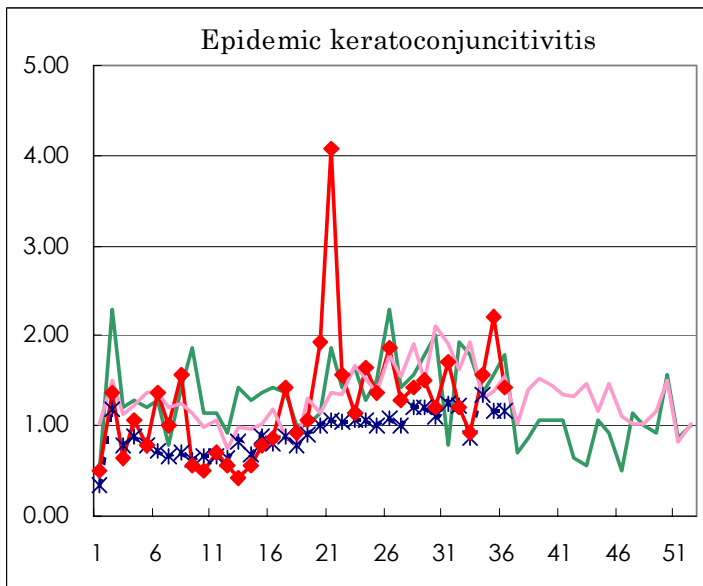
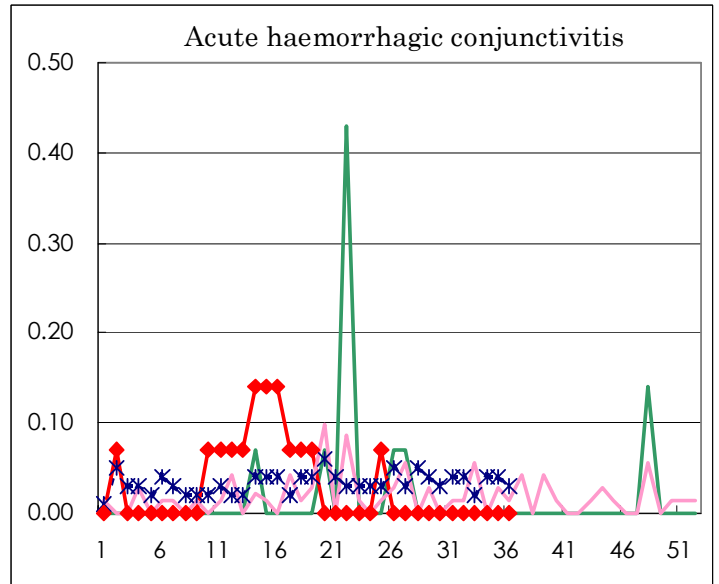
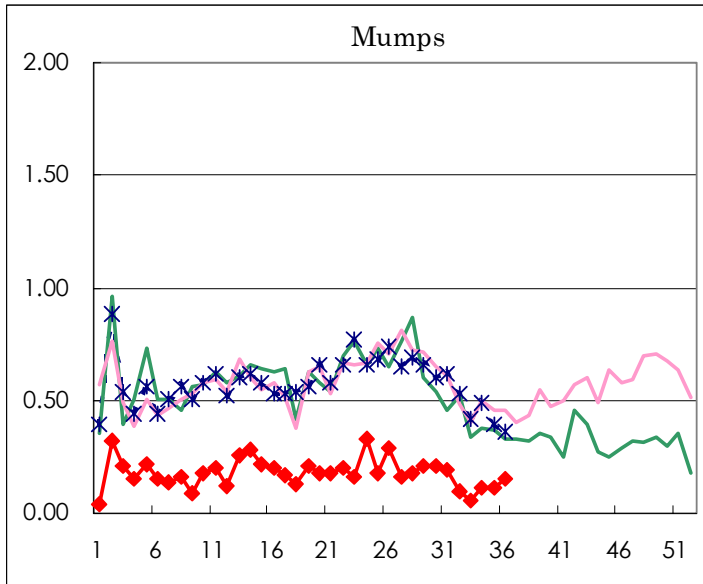
Diseases	Sex	Week(2003)				Total
		33rd	34th	35th	36th	
Influenza	M					13,398
	F					13,078
Pharygoconjunctival fever	M	16	15	18	13	594
	F	7	14	8	14	469
Group A streptococcal pharyngitis	M	9	19	14	24	1,499
	F	6	18	14	23	1,350
Infectious gastroenteritis	M	66	92	110	133	10,516
	F	55	90	112	121	9,814
Chickenpox	M	22	49	32	28	2,381
	F	18	32	22	13	2,003
Hand, foot, and mouth disease	M	104	109	93	81	3,384
	F	93	85	85	70	2,827
Erythema infectiosum	M	4	13	13	15	479
	F	8	11	10	12	473
Exanthem subitum	M	22	39	52	43	1,257
	F	24	28	53	51	1,268
Pertussis	M		1		1	16
	F				1	6
Rubella	M	1	1		2	55
	F		1			53
Herpangina	M	75	63	75	67	2,377
	F	85	66	70	51	2,168
Measles	M	3	4	4	3	179
	F		2	4	2	168
Mumps	M	4	8	12	12	533
	F	4	7	3	9	385
Cold with exanthems by Enterovirus	M	2	4	3	9	209
	F	4	10	4	7	209
Mucocutaneous Lymphnode Syndrome	M	1			3	26
	F	1		1	1	26
Acute hemorrhagic conjunctivitis	M					8
	F					7
Epidemic keratoconjunctivitis	M	6	14	22	11	374
	F	7	8	9	9	253
Acute encephalitis (excluding Japanese encephalitis)	M					2
	F					1
Bacterial meningitis	M					5
	F					6
Aseptic meningitis	M	2	6	1		29
	F	1	3	4		19
Mycoplasma pneumonia	M		2	2	1	45
	F		1	2	2	47
Chlamydial pneumonia (excluding psittacosis)	M					2
	F					
Measles in adults	M			1		76
	F					60

(Blank means 0.)

Disease Trend Graph (weekly reported cases per fixed-point in comparison)







Tokyo Metropolitan Government
Infectious Disease Surveillance Center

