

INFECTIOUS DISEASES WEEKLY REPORT

# TOKYO IDWR

Tokyo Metropolitan Public Health Research Institute

22 September 2003 / Number 37

- Number of patients with the diseases required notifying all the cases
- Number of patients with the diseases to be reported by the designated clinics and hospitals
- Disease trend graph (weekly reported cases per fixed-point in comparison)

## Surveillance System in Tokyo, Japan

### The diseases which all physicians must report

All physicians must report to health centers the incidence of the diseases which are shown at page one. Health centers electronically report the individual case to Tokyo Metropolitan Infectious Disease Surveillance Center.

### Fixed-point surveillance

The numbers of patients who visit designated clinics or hospitals during a week are reported to health centers ( There are 37 in Tokyo). And they electronically report the numbers to Tokyo Metropolitan Infectious Disease Surveillance Center. We have about 200 fixed points (clinics and hospitals) in Tokyo.

1<sup>st</sup> Week is early January and 52<sup>nd</sup> Week is end of December.

Tokyo Metropolitan Infectious Disease Surveillance Center  
Tokyo Metropolitan Public Health Research Institute

TEL:81-3-3363-3213 FAX:81-3-5332-7365

e-mail: [idsc@tokyo-eiken.go.jp](mailto:idsc@tokyo-eiken.go.jp)

URL: [idsc.tokyo-eiken.go.jp/](http://idsc.tokyo-eiken.go.jp/)

## Number of patients with the diseases which all physicians must report

Category	Diseases	Tokyo					Japan	
		34th	35th	36th	37th	Total	37th	Total
I	Ebola hemorrhagic fever							
	Crimean-Congo hemorrhagic fever							
	Plague							
	Marburg disease							
	Lassa fever							
II	Cholera					2		13
	Shigellosis	7		4	1	69	18	330
	Typhoid fever	1				15	3	42
	Paratyphoid fever					4	1	23
	Acute poliomyelitis							
	Diphtheria							
III	Enterohemorrhagic <i>Escherichia coli</i> infection	8	4	6	12	135	79	1879
IV	Amebiasis		3	5	1	85	2	347
	Echinococcosis						1	15
	Yellow fever							
	Psittacosis	1			1	2	1	35
	Relapsing fever							
	Acute viral hepatitis					54	1	520
	Q fever					1		6
	Rabies							
	Cryptosporidiosis					4		5
	Creutzfeldt-Jakob Disease					11	1	80
	Sever invasive streptococcal infections	1				5		43
	Acquired immunodeficiency syndrome	10	9	11	8	253	10	611
	Coccidioidomycosis							1
	Giardiasis		1			25	1	71
	Hemorrhagic fever with renal syndrome							
	Meningococcal meningitis			1		4		16
	Congenital rubella syndrome							1
	Anthrax							
	Scrub typhus (Tsutsugamushi disease)							136
	Dengue fever			1		11		22
	Japanese spotted fever							33
	Japanese encephalitis							
	Infant botulism							
	Syphilis		1	2	1	52	4	341
	Tetanus					3	2	48
	Vancomycin-resistant <i>enterococcus</i> infection					3		43
	Hantavirus pulmonary syndrome							
	Helpes B virus infection							
	Brucellosis							
	Epidemic typhus							
	Malaria	1				22		52
Lyme disease							4	
Legionellosis	1		1	2	13	4	106	
West Nile fever								

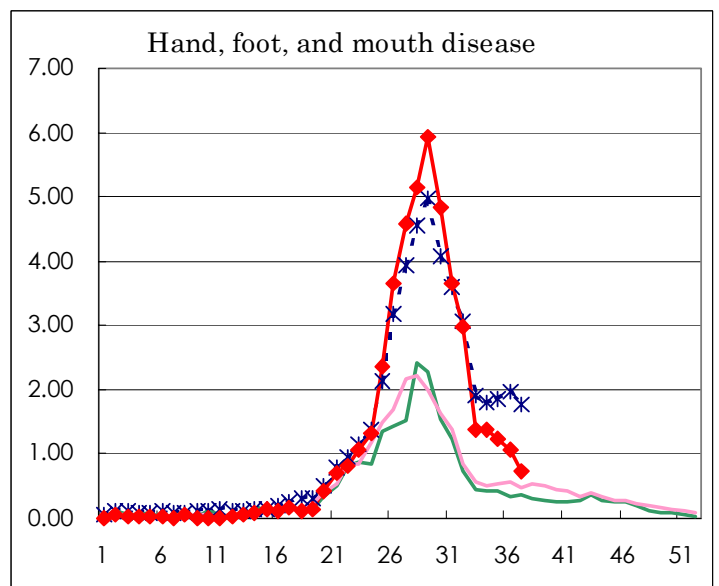
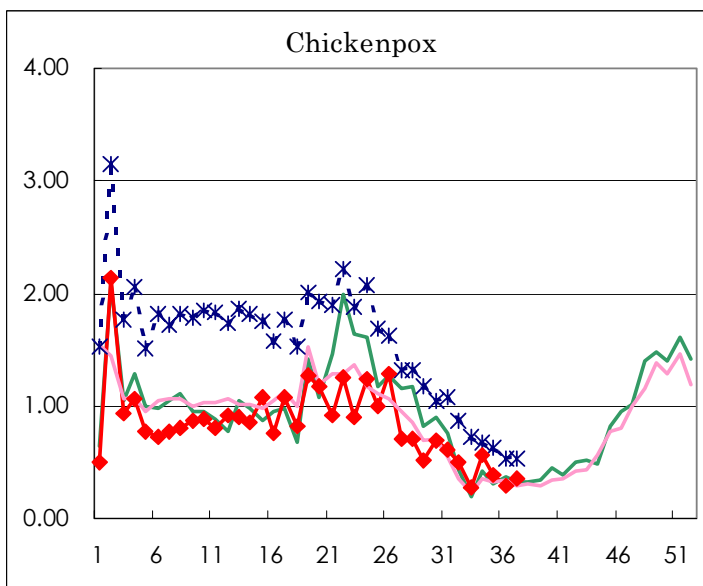
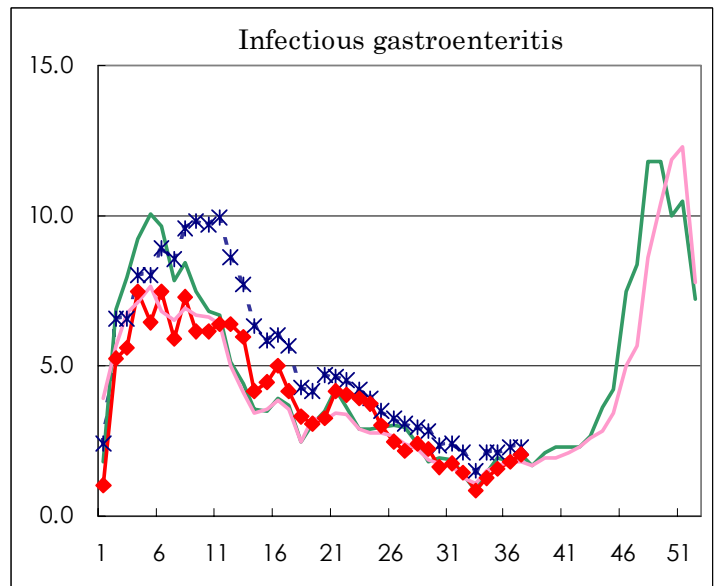
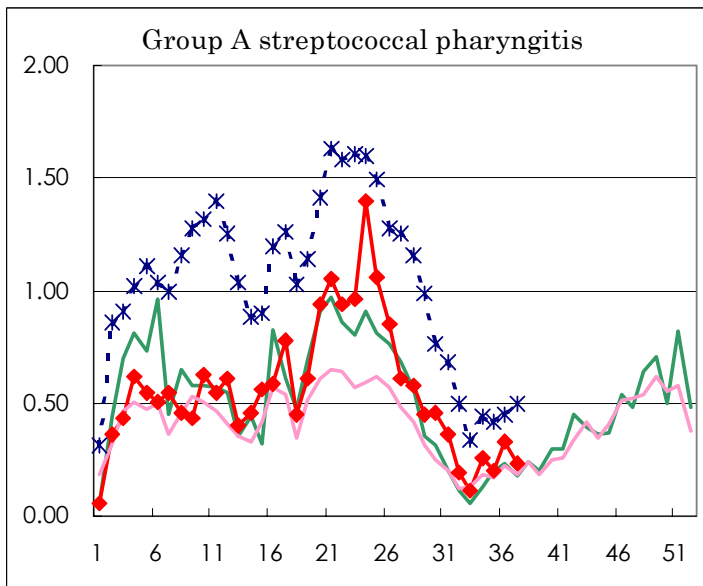
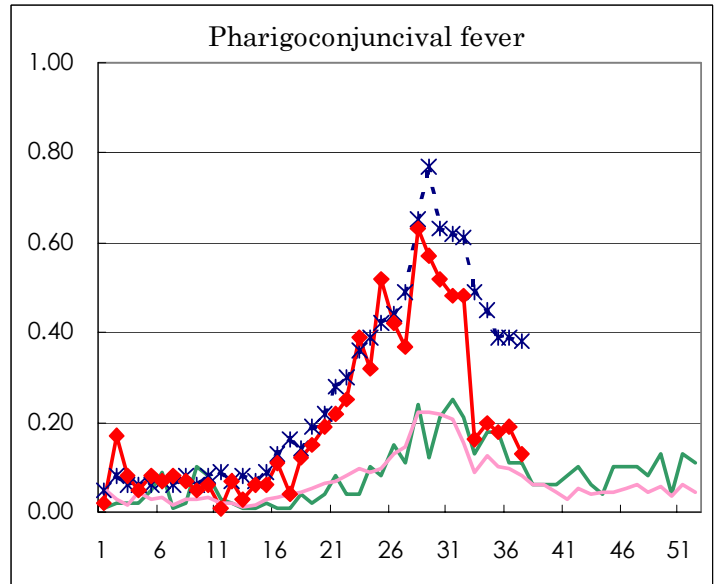
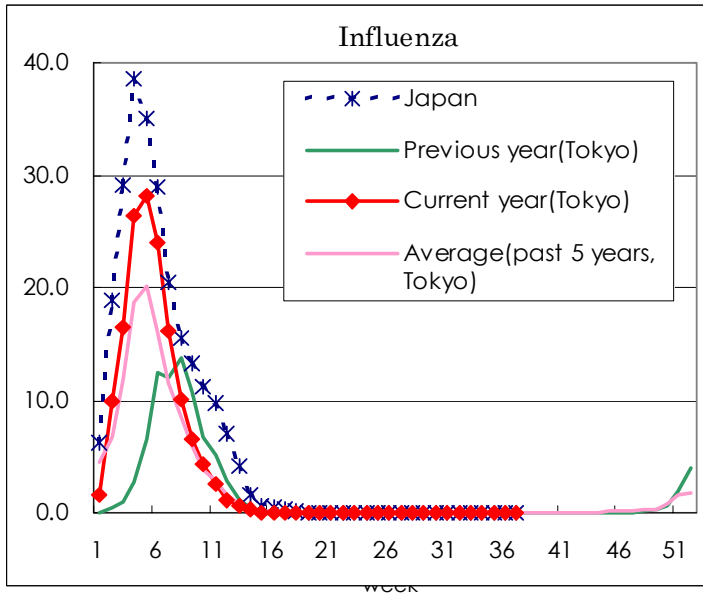
( Blank means 0. )

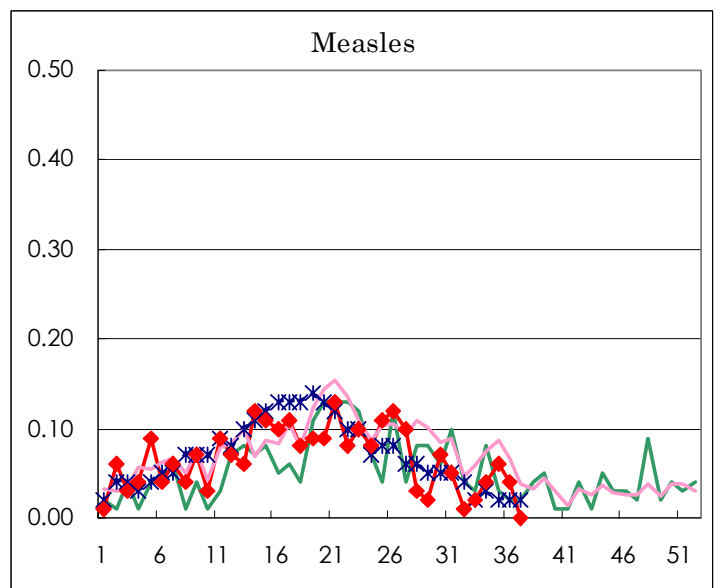
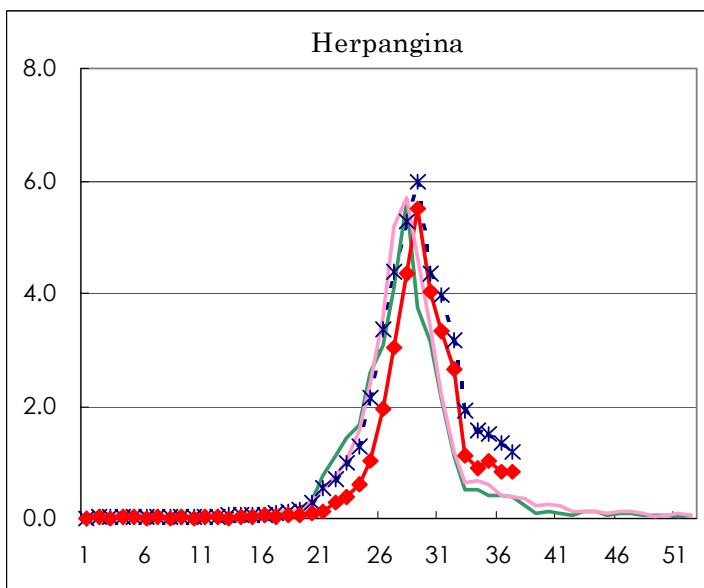
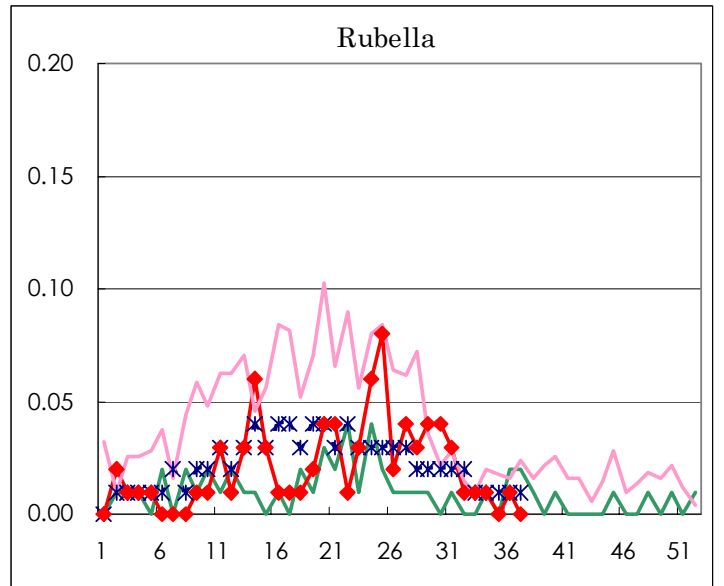
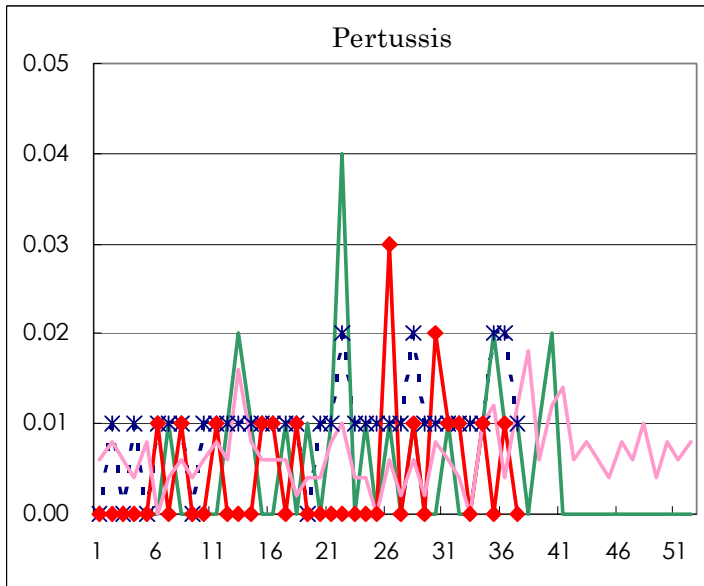
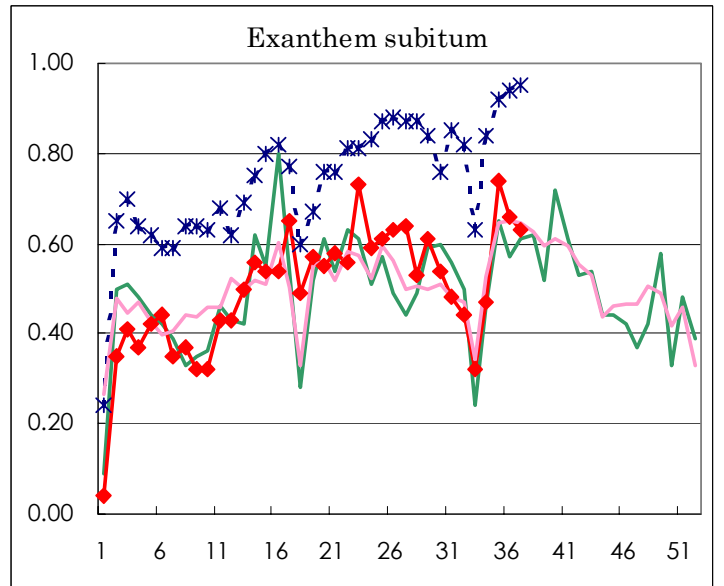
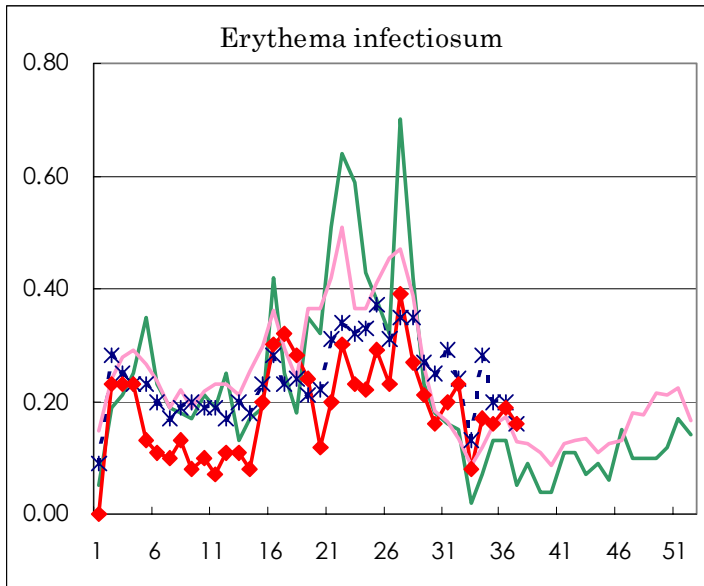
Number of patients with the diseases to be reported  
by the designated clinics and hospitals

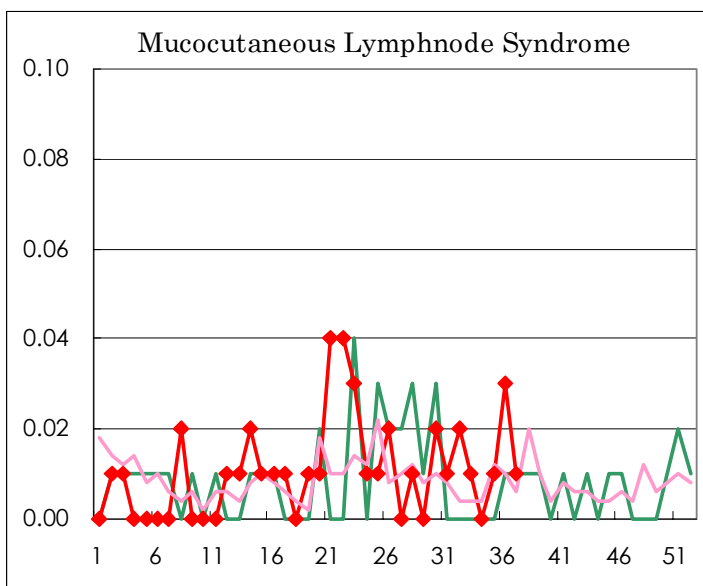
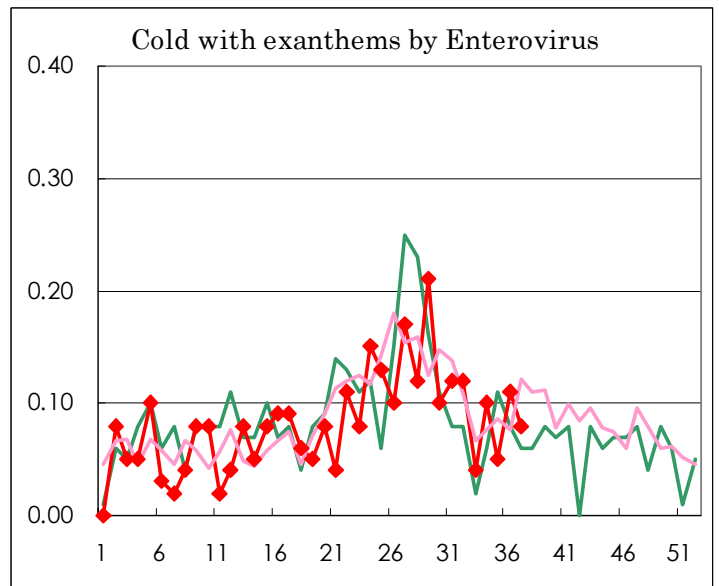
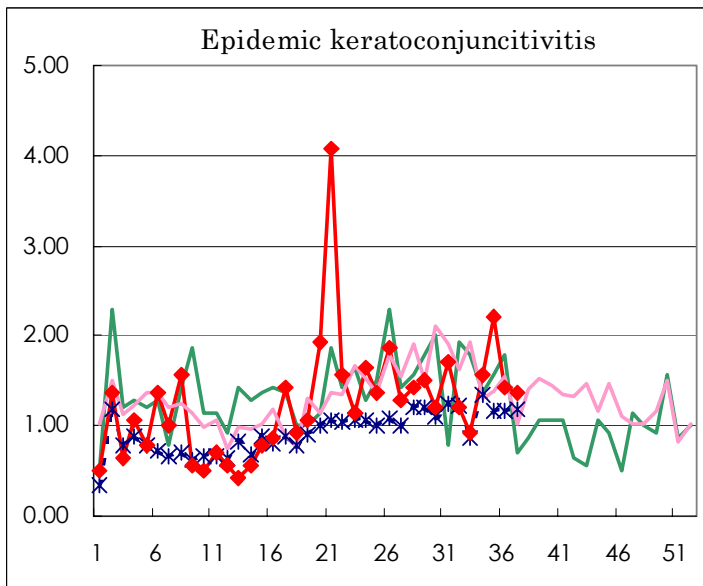
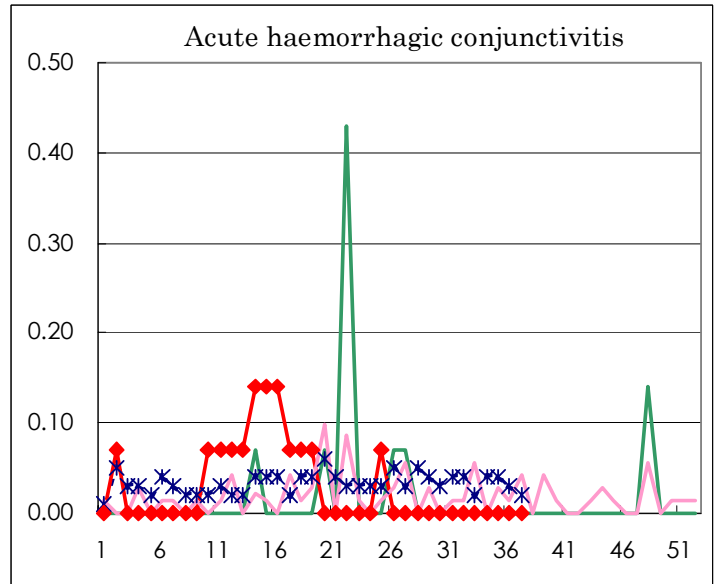
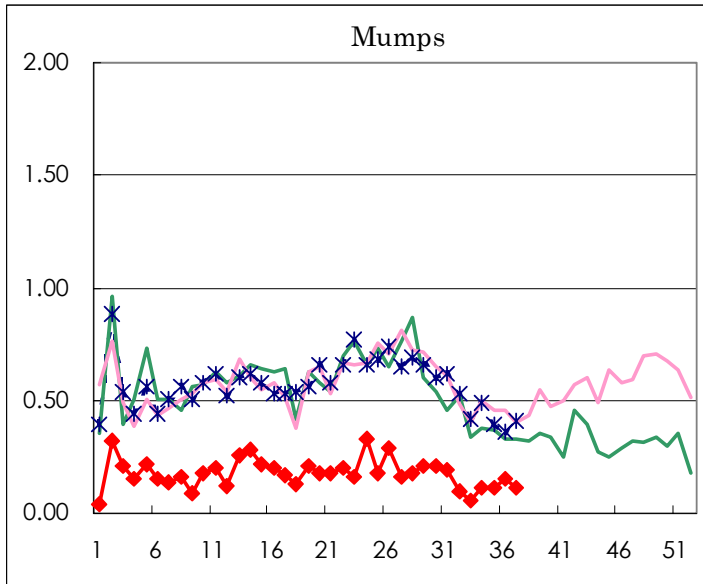
Diseases	Sex	Week(2003)				Total
		34th	35th	36th	37th	
Influenza	M					13,398
	F					13,078
Pharygoconjunctival fever	M	15	18	13	8	602
	F	14	8	14	11	480
Group A streptococcal pharyngitis	M	19	14	24	13	1,512
	F	18	14	23	19	1,369
Infectious gastroenteritis	M	92	110	133	170	10,686
	F	90	112	121	120	9,934
Chickenpox	M	49	32	28	30	2,411
	F	32	22	13	21	2,024
Hand, foot, and mouth disease	M	109	93	81	54	3,438
	F	85	85	70	51	2,878
Erythema infectiosum	M	13	13	15	9	488
	F	11	10	12	14	487
Exanthem subitum	M	39	52	43	46	1,303
	F	28	53	51	44	1,312
Pertussis	M	1		1		16
	F			1		6
Rubella	M	1		2		55
	F	1				53
Herpangina	M	63	75	67	62	2,439
	F	66	70	51	54	2,222
Measles	M	4	4	3		179
	F	2	4	2		168
Mumps	M	8	12	12	7	540
	F	7	3	9	9	394
Cold with exanthems by Enterovirus	M	4	3	9	5	214
	F	10	4	7	6	215
Mucocutaneous Lymphnode Syndrome	M			3		26
	F		1	1	1	27
Acute hemorrhagic conjunctivitis	M					8
	F					7
Epidemic keratoconjunctivitis	M	14	22	11	10	384
	F	8	9	9	9	262
Acute encephalitis (excluding Japanese encephalitis)	M					2
	F					1
Bacterial meningitis	M					5
	F					6
Aseptic meningitis	M	6	1		1	30
	F	3	4			19
Mycoplasma pneumonia	M	2	2	1		45
	F	1	2	2		47
Chlamydial pneumonia (excluding psittacosis)	M					2
	F					
Measles in adults	M		1			76
	F					60

( Blank means 0. )

# Disease Trend Graph (weekly reported cases per fixed-point in comparison)







Tokyo Metropolitan Government  
**Infectious Disease Surveillance Center**

