

INFECTIOUS DISEASES WEEKLY REPORT

# TOKYO IDWR

Tokyo Metropolitan Public Health Research Institute

30 September 2003 / Number 38

- Number of patients with the diseases required notifying all the cases
- Number of patients with the diseases to be reported by the designated clinics and hospitals
- Disease trend graph (weekly reported cases per fixed-point in comparison)

## Surveillance System in Tokyo, Japan

### The diseases which all physicians must report

All physicians must report to health centers the incidence of the diseases which are shown at page one. Health centers electronically report the individual case to Tokyo Metropolitan Infectious Disease Surveillance Center.

### Fixed-point surveillance

The numbers of patients who visit designated clinics or hospitals during a week are reported to health centers ( There are 37 in Tokyo). And they electronically report the numbers to Tokyo Metropolitan Infectious Disease Surveillance Center. We have about 200 fixed points (clinics and hospitals) in Tokyo.

1<sup>st</sup> Week is early January and 52<sup>nd</sup> Week is end of December.

Tokyo Metropolitan Infectious Disease Surveillance Center  
Tokyo Metropolitan Public Health Research Institute

TEL:81-3-3363-3213 FAX:81-3-5332-7365

e-mail: [idsc@tokyo-eiken.go.jp](mailto:idsc@tokyo-eiken.go.jp)

URL: [idsc.tokyo-eiken.go.jp/](http://idsc.tokyo-eiken.go.jp/)

## Number of patients with the diseases which all physicians must report

Category	Diseases	Tokyo					Japan		
		35th	36th	37th	38th	Total	38th	Total	
I	Ebola hemorrhagic fever								
	Crimean-Congo hemorrhagic fever								
	Plague								
	Marburg disease								
	Lassa fever								
II	Cholera				2	4	2	15	
	Shigellosis		4	1	3	72	10	343	
	Typhoid fever					15	1	43	
	Paratyphoid fever				1	5	2	25	
	Acute poliomyelitis								
	Diphtheria								
III	Enterohemorrhagic <i>Escherichia coli</i> infection	4	6	12	3	138	45	1934	
IV	Amebiasis	3	5	1	3	88	5	362	
	Echinococcosis							15	
	Yellow fever								
	Psittacosis			1		2		35	
	Relapsing fever								
	Acute viral hepatitis				6	60	1	529	
	Q fever					1		6	
	Rabies								
	Cryptosporidiosis					4		5	
	Creutzfeldt-Jakob Disease					11	1	81	
	Sever invasive streptococcal infections					5		43	
	Acquired immunodeficiency syndrome	9	11	8	7	260	4	624	
	Coccidioidomycosis							1	
	Giardiasis	1				25		71	
	Hemorrhagic fever with renal syndrome								
	Meningococcal meningitis		1				4		16
	Congenital rubella syndrome								1
	Anthrax								
	Scrub typhus (Tsutsugamushi disease)								136
	Dengue fever		1				11		22
	Japanese spotted fever							2	35
	Japanese encephalitis								
	Infant botulism								
	Syphilis	1	2	1	2	54	5	348	
	Tetanus						3	1	50
	Vancomycin-resistant <i>enterococcus</i> infection						3		45
	Hantavirus pulmonary syndrome								
	Helpes B virus infection								
	Brucellosis								
	Epidemic typhus								
	Malaria						22	1	53
	Lyme disease								4
Legionellosis		1	2			13	1	109	
West Nile fever									

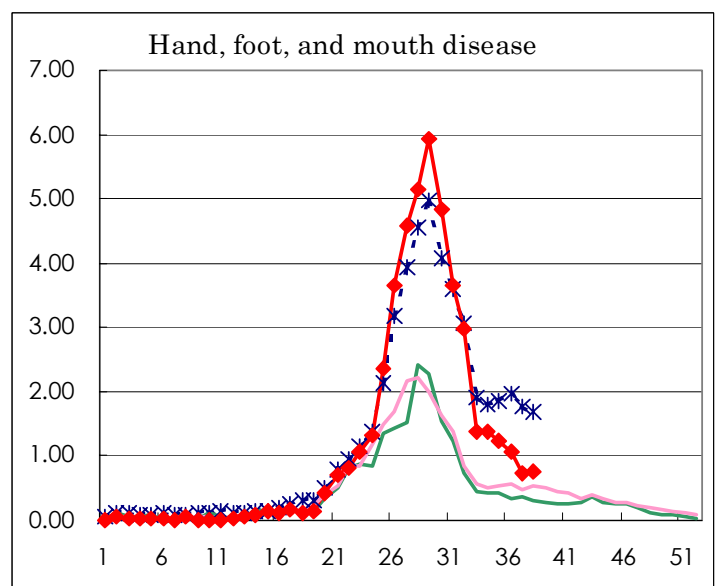
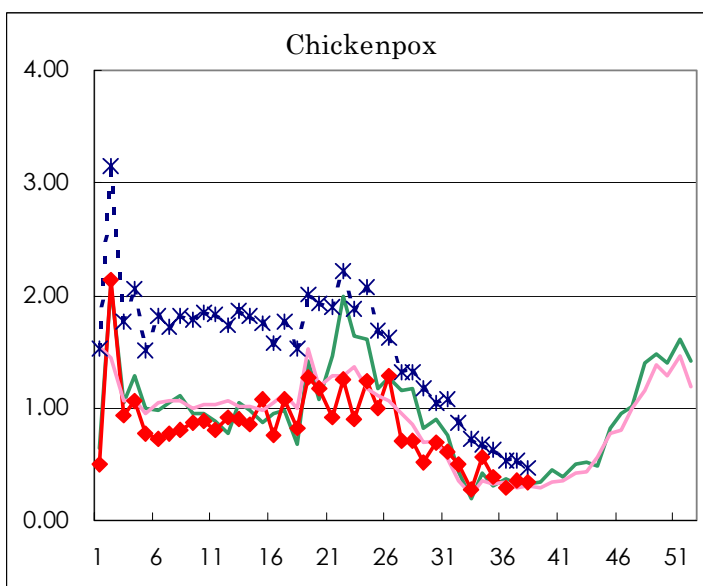
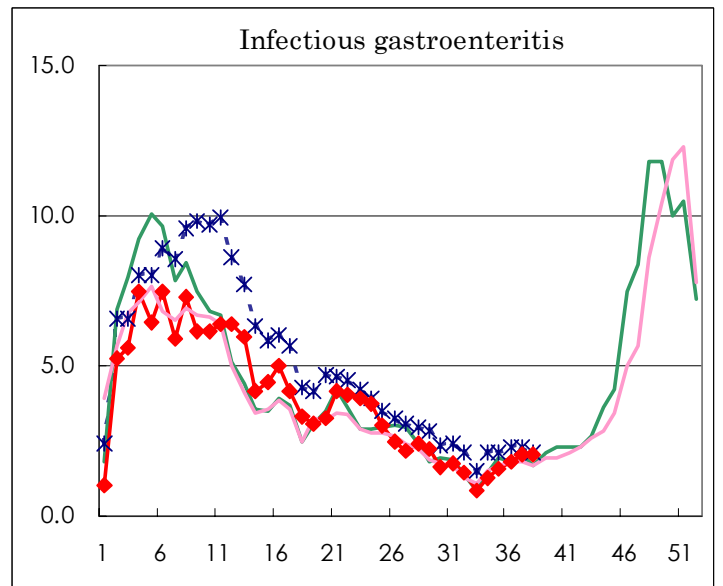
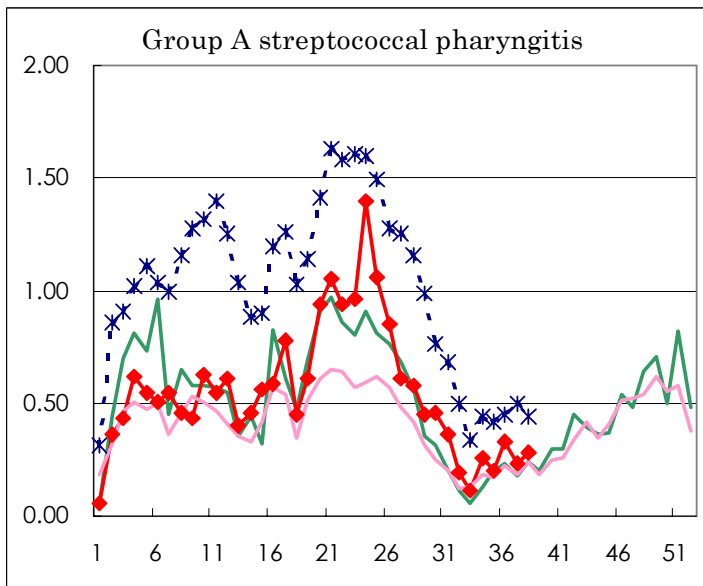
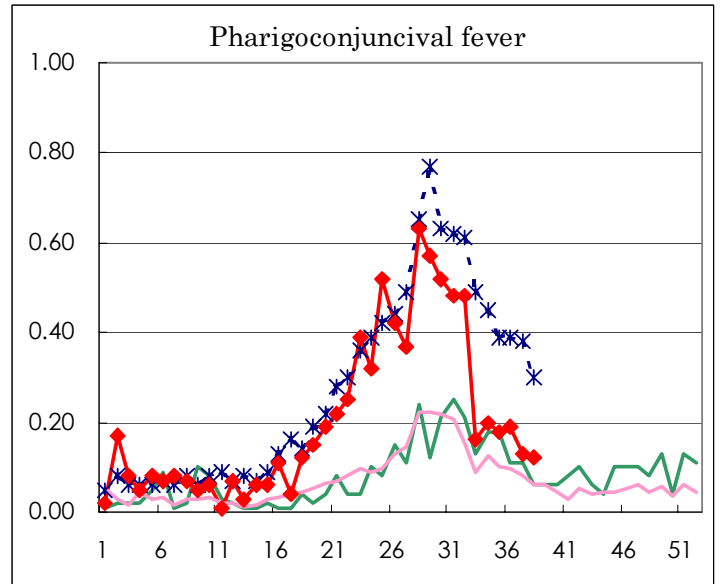
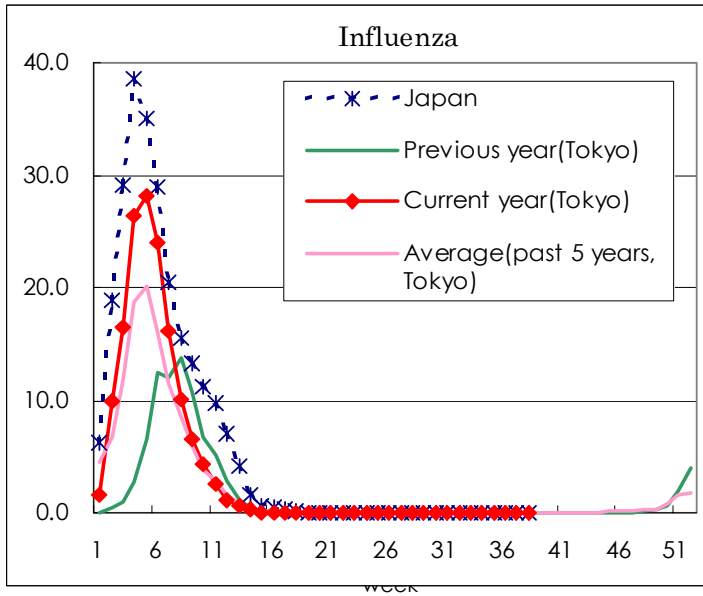
( Blank means 0. )

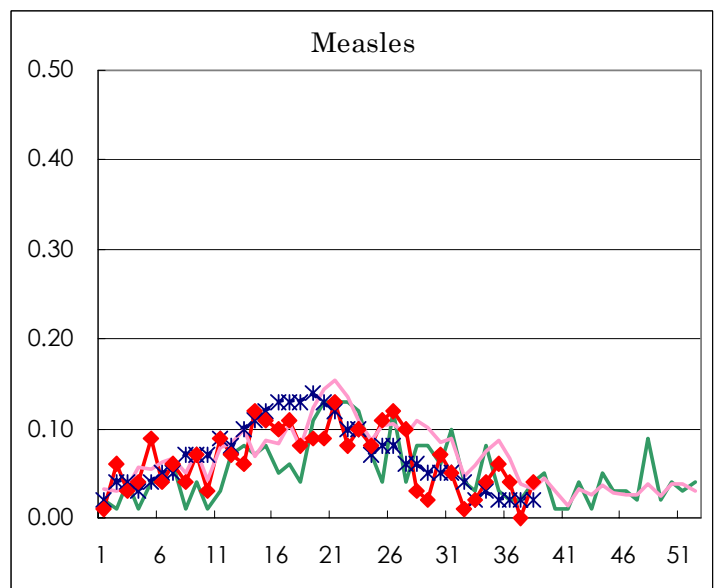
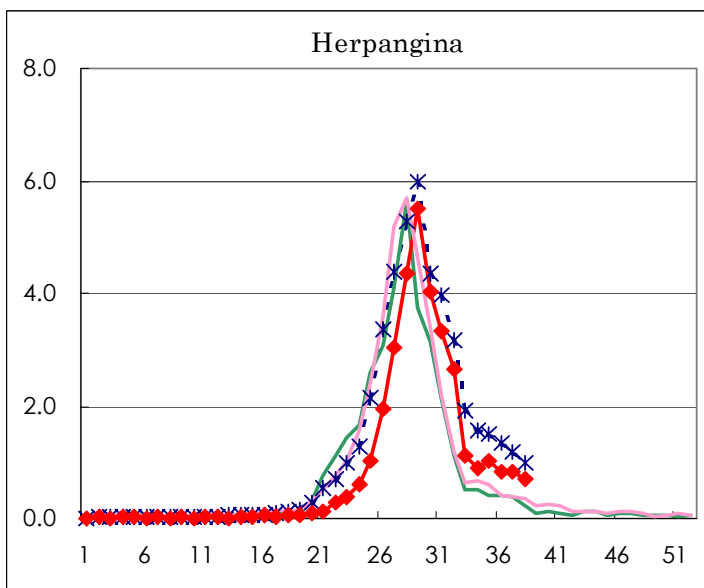
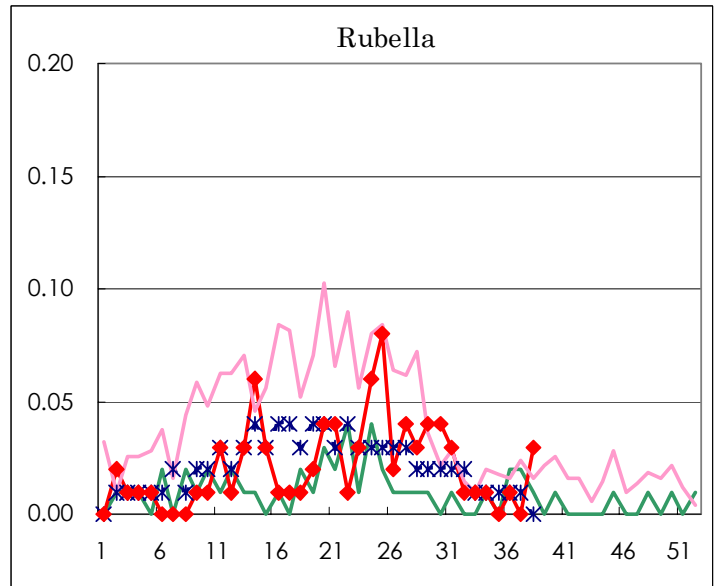
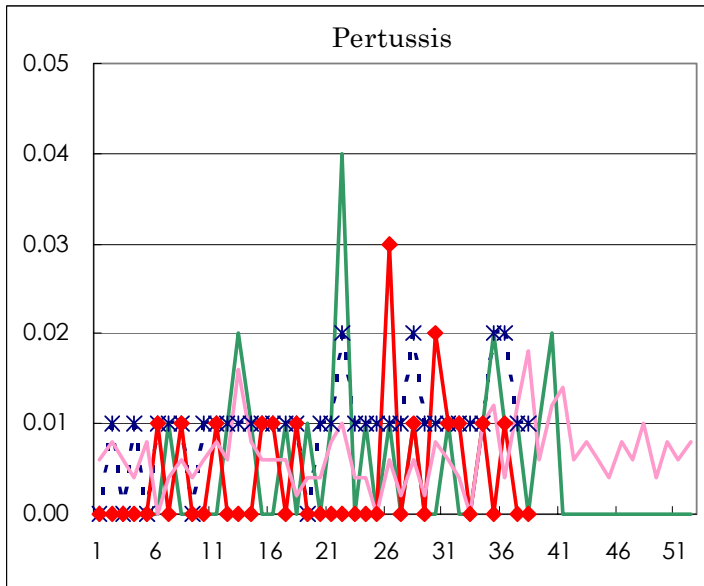
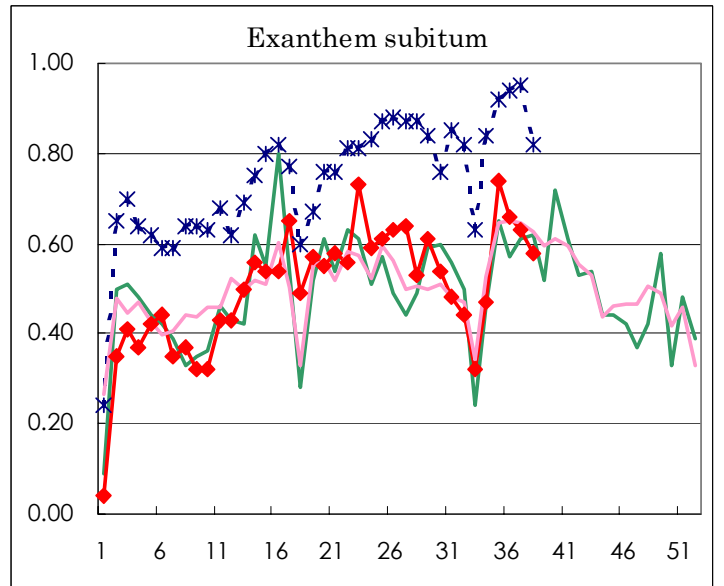
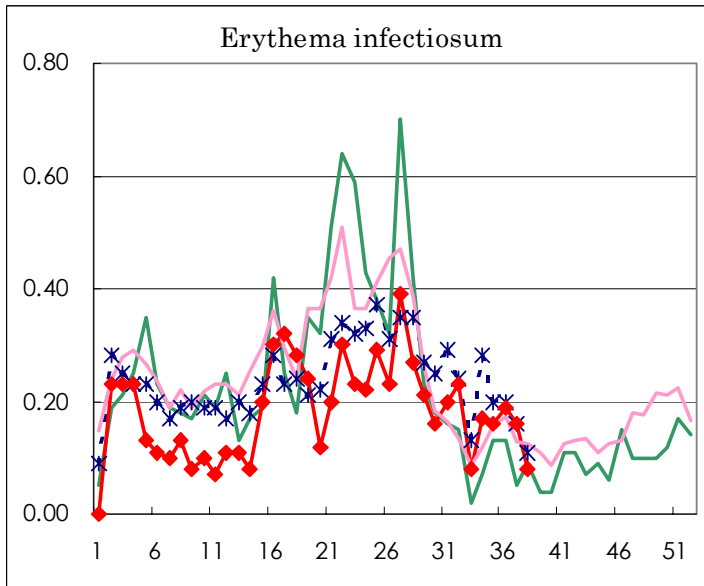
Number of patients with the diseases to be reported  
by the designated clinics and hospitals

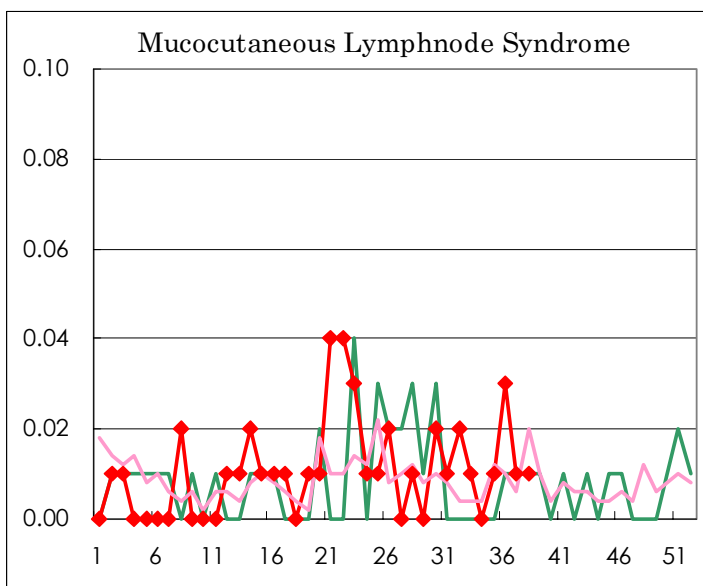
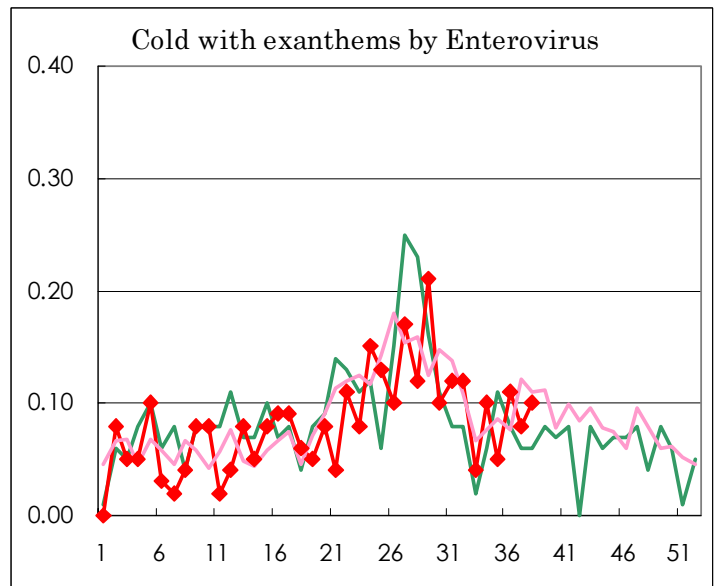
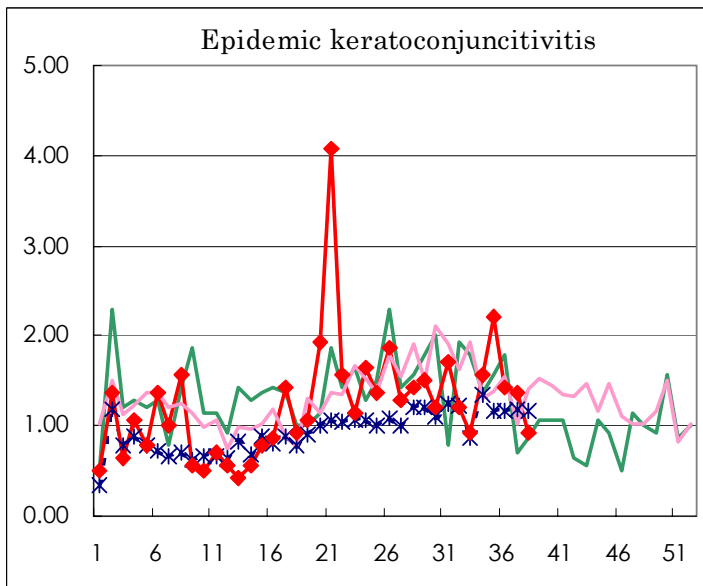
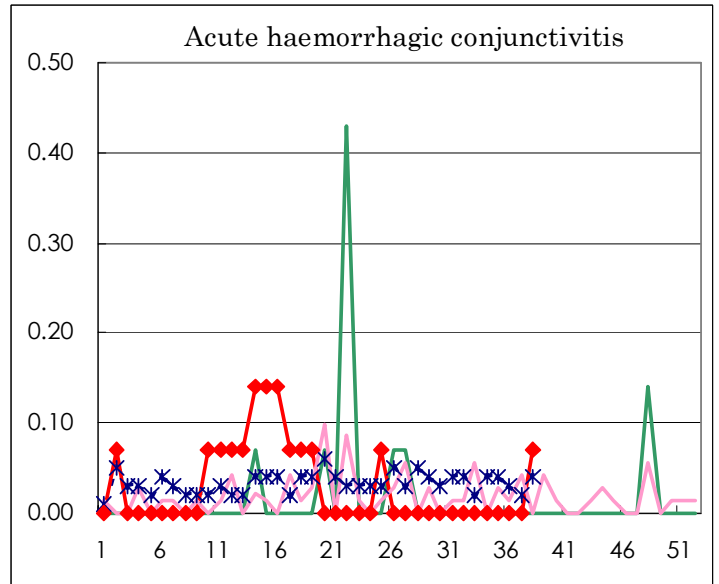
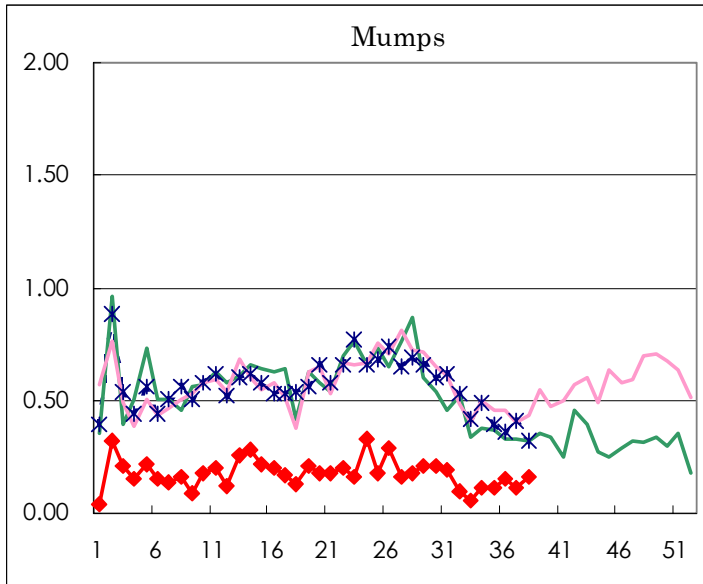
Diseases	Sex	Week(2003)				Total
		35th	36th	37th	38th	
Influenza	M					13,398
	F					13,078
Pharygoconjunctival fever	M	18	13	8	10	612
	F	8	14	11	7	487
Group A streptococcal pharyngitis	M	14	24	13	21	1,533
	F	14	23	19	19	1,388
Infectious gastroenteritis	M	110	133	170	154	10,840
	F	112	121	120	135	10,069
Chickenpox	M	32	28	30	28	2,439
	F	22	13	21	19	2,043
Hand, foot, and mouth disease	M	93	81	54	64	3,502
	F	85	70	51	45	2,923
Erythema infectiosum	M	13	15	9	6	494
	F	10	12	14	5	492
Exanthem subitum	M	52	43	46	45	1,348
	F	53	51	44	38	1,350
Pertussis	M		1			16
	F		1			6
Rubella	M		2		2	57
	F				2	55
Herpangina	M	75	67	62	54	2,493
	F	70	51	54	48	2,270
Measles	M	4	3		2	181
	F	4	2		3	171
Mumps	M	12	12	7	16	556
	F	3	9	9	7	401
Cold with exanthems by Enterovirus	M	3	9	5	11	225
	F	4	7	6	3	218
Mucocutaneous Lymphnode Syndrome	M		3			26
	F	1	1	1	2	29
Acute hemorrhagic conjunctivitis	M					8
	F				1	8
Epidemic keratoconjunctivitis	M	22	11	10	8	392
	F	9	9	9	5	267
Acute encephalitis (excluding Japanese encephalitis)	M					2
	F					1
Bacterial meningitis	M					5
	F					6
Aseptic meningitis	M	1		1	1	31
	F	4			3	22
Mycoplasma pneumonia	M	2	1		3	48
	F	2	2		6	53
Chlamydial pneumonia (excluding psittacosis)	M					2
	F					
Measles in adults	M	1			4	80
	F					60

( Blank means 0. )

# Disease Trend Graph (weekly reported cases per fixed-point in comparison)







Tokyo Metropolitan Government  
**Infectious Disease Surveillance Center**

