

INFECTIOUS DISEASES WEEKLY REPORT

TOKYO IDWR

Tokyo Metropolitan Public Health Research Institute

28 October 2003 / Number 42

- Number of patients with the diseases required notifying all the cases
- Number of patients with the diseases to be reported by the designated clinics and hospitals
- Disease trend graph (weekly reported cases per fixed-point in comparison)

Surveillance System in Tokyo, Japan

The diseases which all physicians must report

All physicians must report to health centers the incidence of the diseases which are shown at page one. Health centers electronically report the individual case to Tokyo Metropolitan Infectious Disease Surveillance Center.

Fixed-point surveillance

The numbers of patients who visit designated clinics or hospitals during a week are reported to health centers (There are 37 in Tokyo). And they electronically report the numbers to Tokyo Metropolitan Infectious Disease Surveillance Center. We have about 200 fixed points (clinics and hospitals) in Tokyo.

1st Week is early January and 52nd Week is end of December.

Tokyo Metropolitan Infectious Disease Surveillance Center
Tokyo Metropolitan Institute of Public Health

TEL:81-3-3363-3213 FAX:81-3-5332-7365

e-mail: idsc@tokyo-eiken.go.jp

URL: idsc.tokyo-eiken.go.jp/

Number of patients with the diseases which all physicians must report

Category	Diseases	Tokyo					Japan	
		39th	40th	41st	42nd	Total	42nd	Total
I	Ebola hemorrhagic fever							
	Crimean-Congo hemorrhagic fever							
	Plague							
	Marburg disease							
	Lassa fever							
II	Cholera					4		19
	Shigellosis	2	2	4	6	86	11	400
	Typhoid fever		2			17	2	51
	Paratyphoid fever					5	1	29
	Acute poliomyelitis							
	Diphtheria							
III	Enterohemorrhagic <i>Escherichia coli</i> infection	9	5	7	2	161	50	2152
IV	Amebiasis	1	3	1	3	96	5	407
	Echinococcosis							16
	Yellow fever							
	Psittacosis					2	1	37
	Relapsing fever							
	Acute viral hepatitis		1	1	1	63	3	561
	Q fever					1		7
	Rabies							
	Cryptosporidiosis				1	5	1	7
	Creutzfeldt-Jakob Disease					11		92
	Sever invasive streptococcal infections					5		45
	Acquired immunodeficiency syndrome	4	6	15	4	289	7	717
	Coccidioidomycosis							1
	Giardiasis	1		1		27	2	81
	Hemorrhagic fever with renal syndrome							
	Meningococcal meningitis					4		16
	Congenital rubella syndrome							1
	Anthrax							
	Scrub typhus (Tsutsugamushi disease)		1			1	3	145
	Dengue fever				2	13		24
	Japanese spotted fever						1	42
	Japanese encephalitis							
	Infant botulism							
	Syphilis				1	55	3	386
	Tetanus					3		53
	Vancomycin-resistant <i>enterococcus</i> infection					3		48
	Hantavirus pulmonary syndrome							
	Helpes B virus infection							
	Brucellosis							
	Epidemic typhus							
	Malaria	1		3	3	29	3	67
Lyme disease							4	
Legionellosis				2	15	2	121	
West Nile fever								

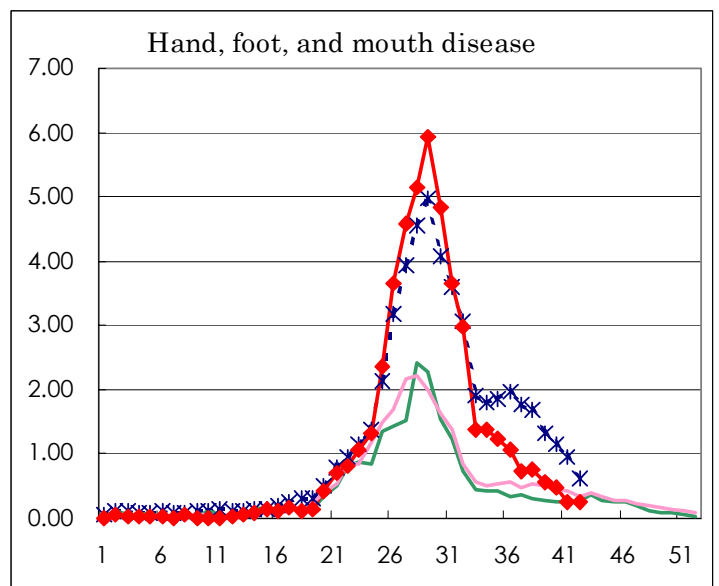
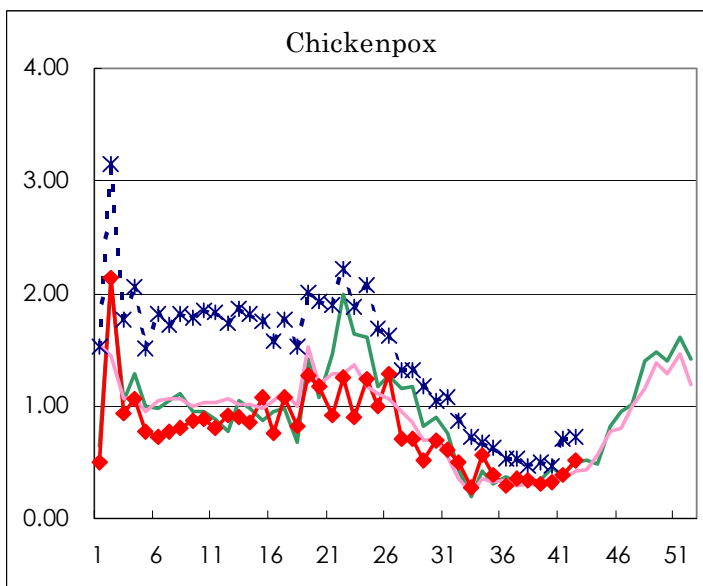
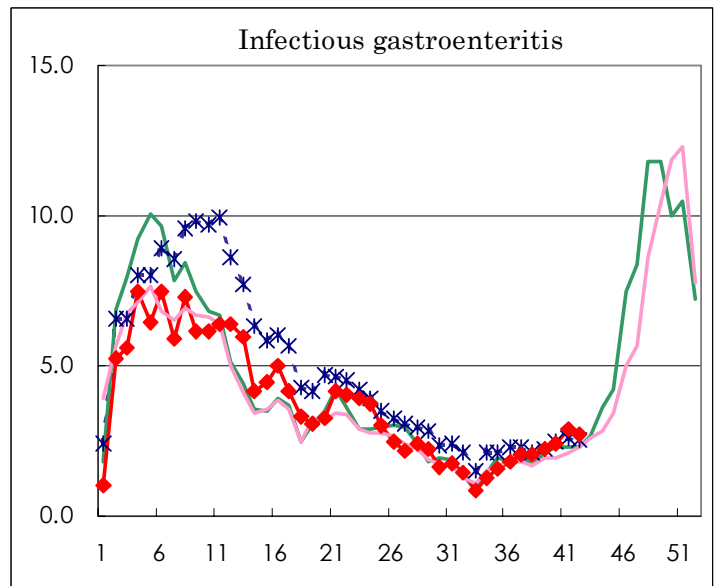
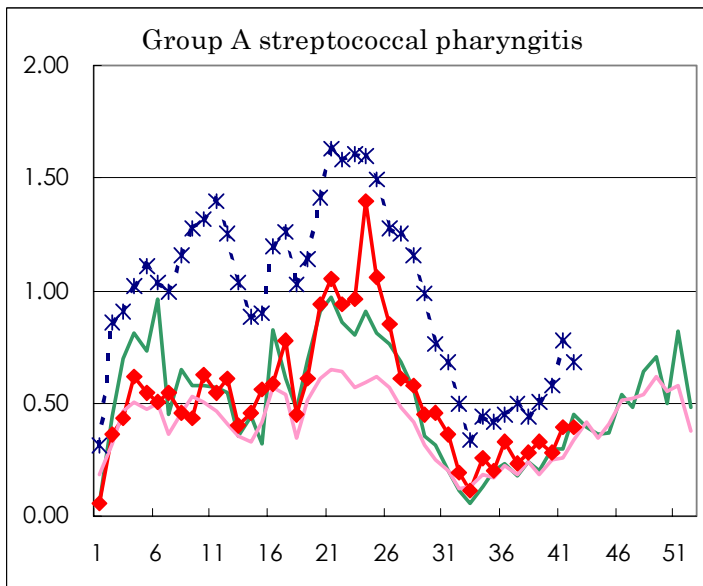
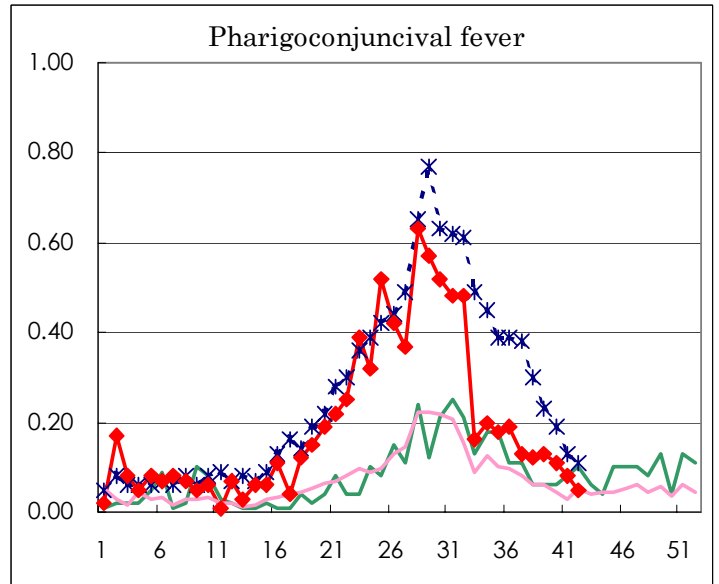
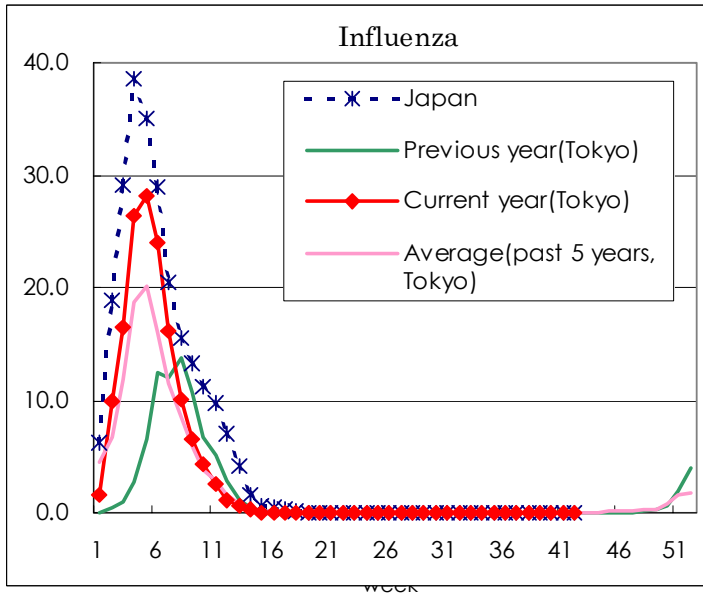
(Blank means 0.)

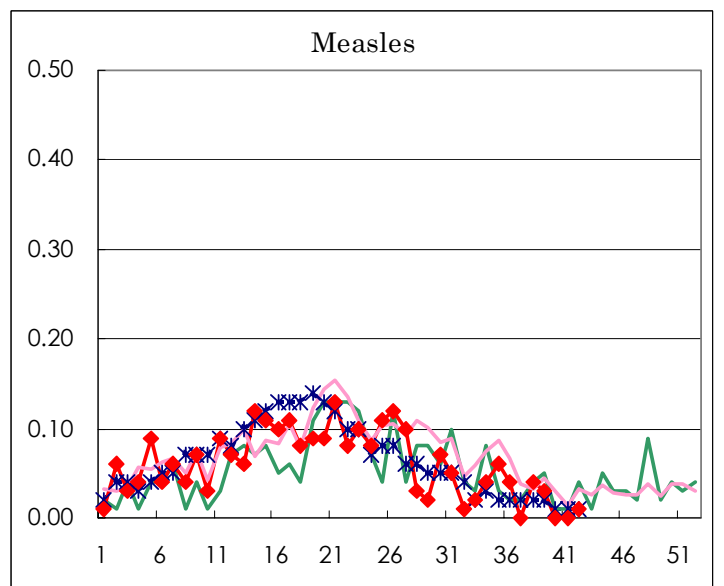
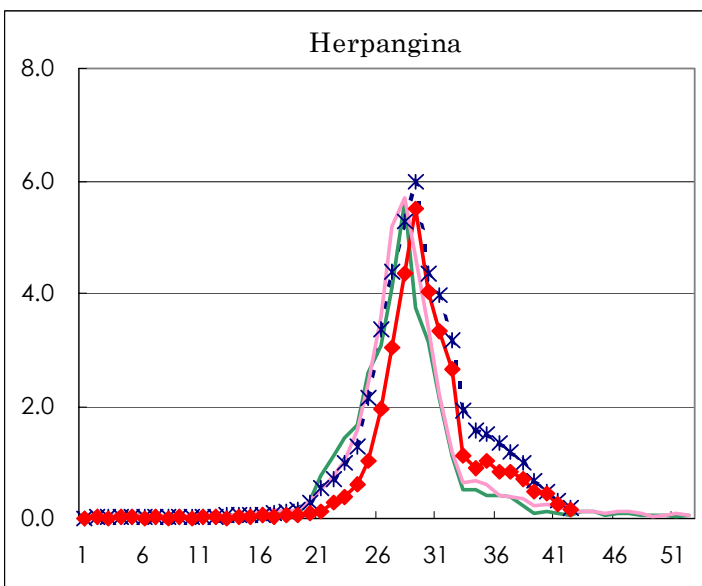
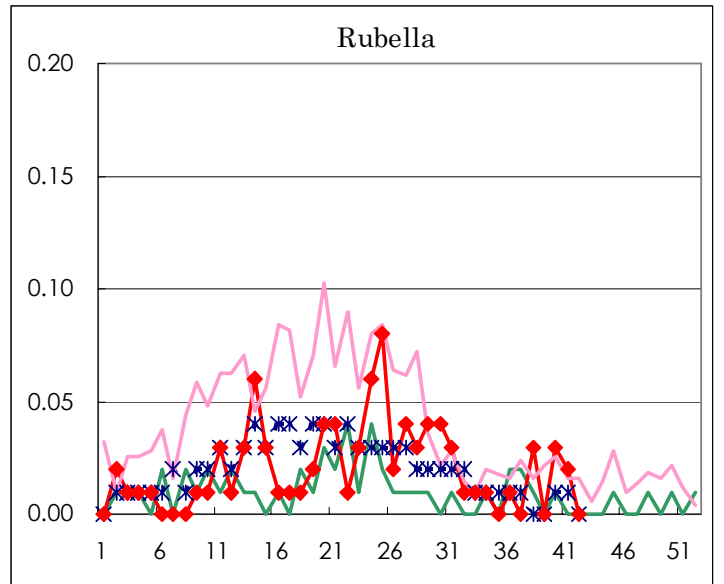
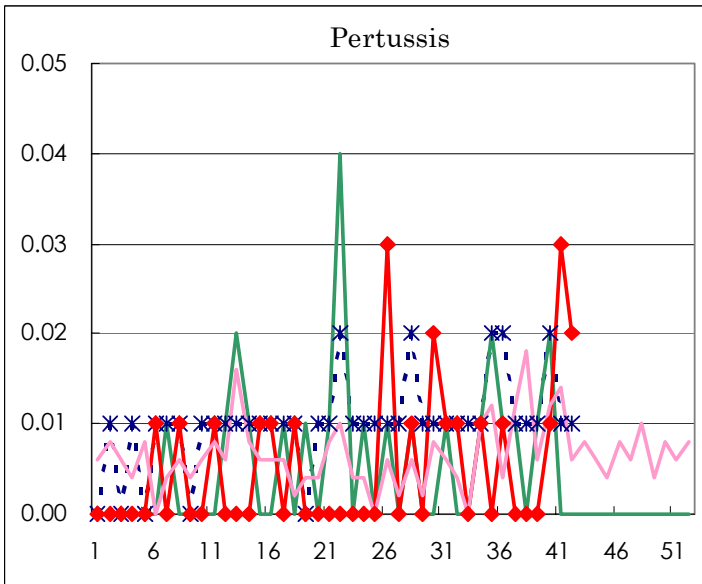
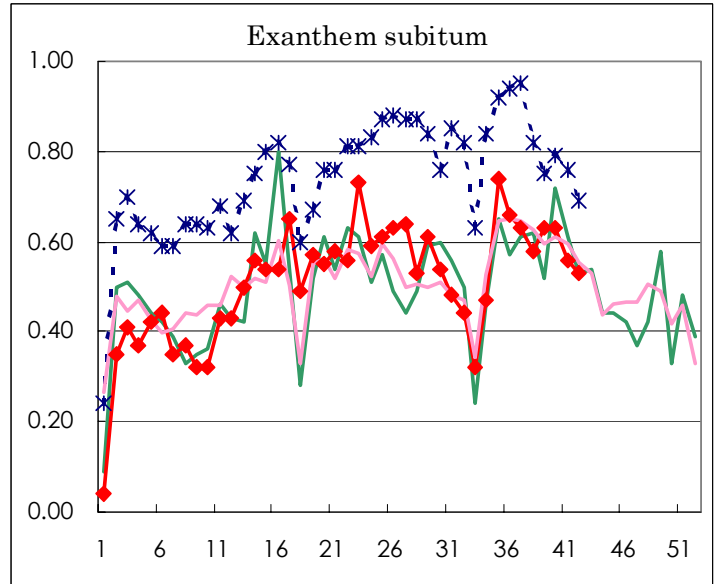
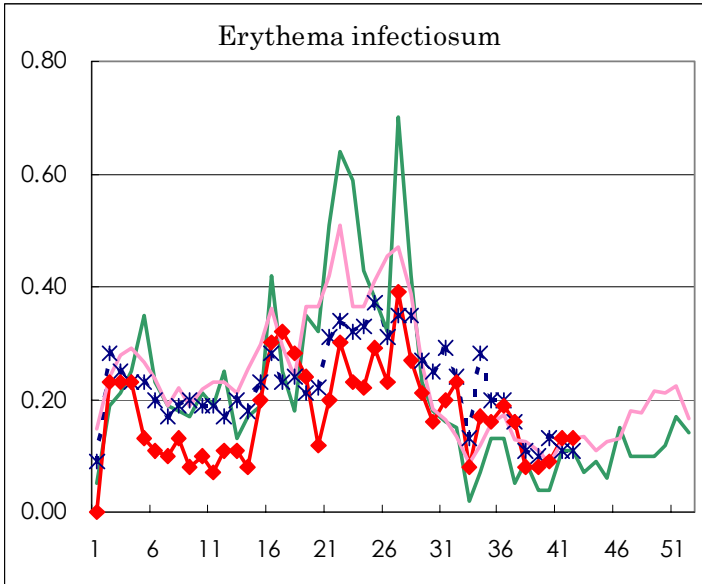
Number of patients with the diseases to be reported
by the designated clinics and hospitals

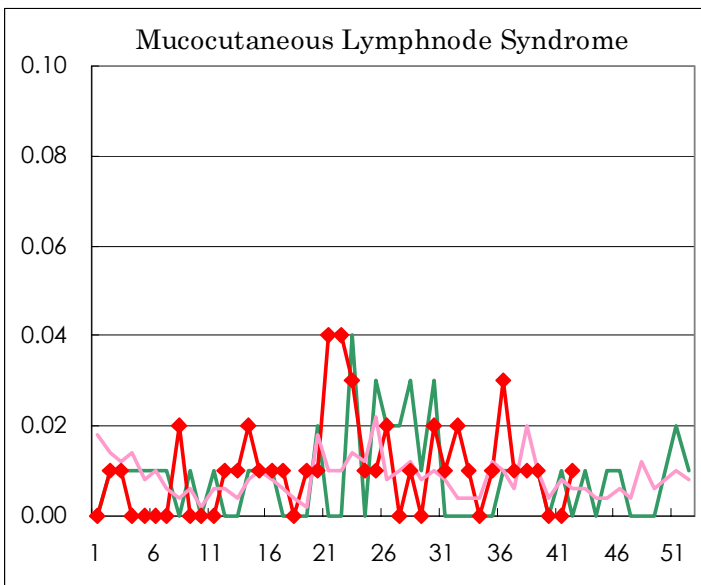
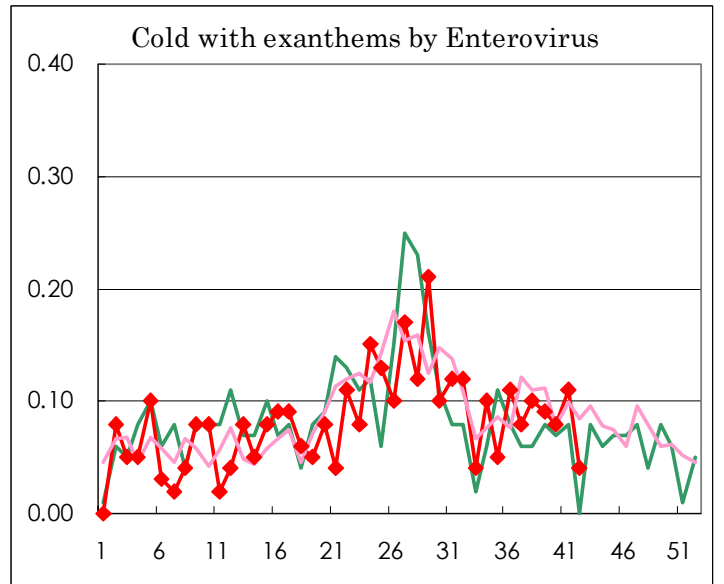
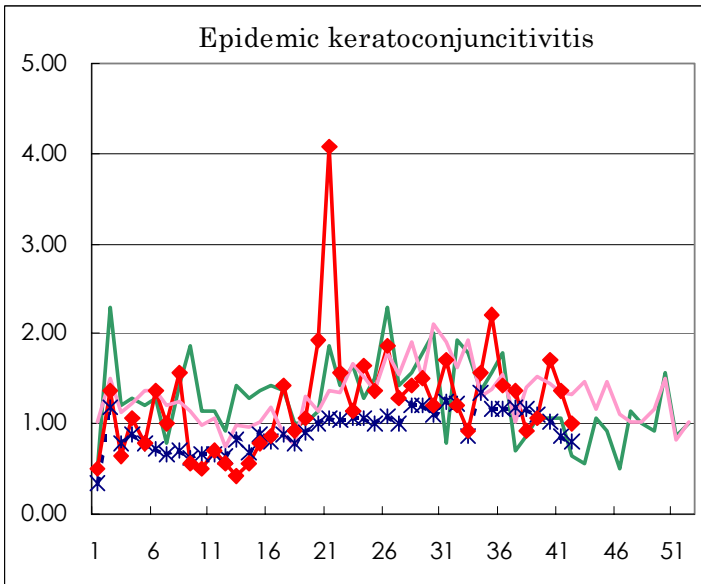
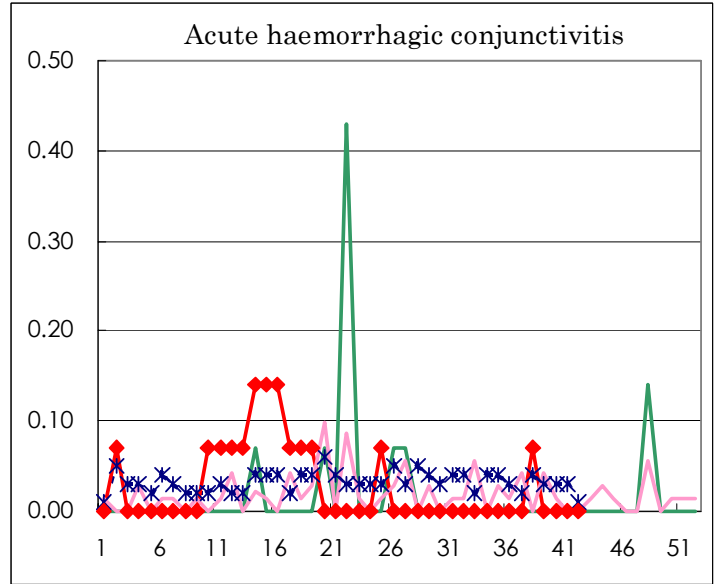
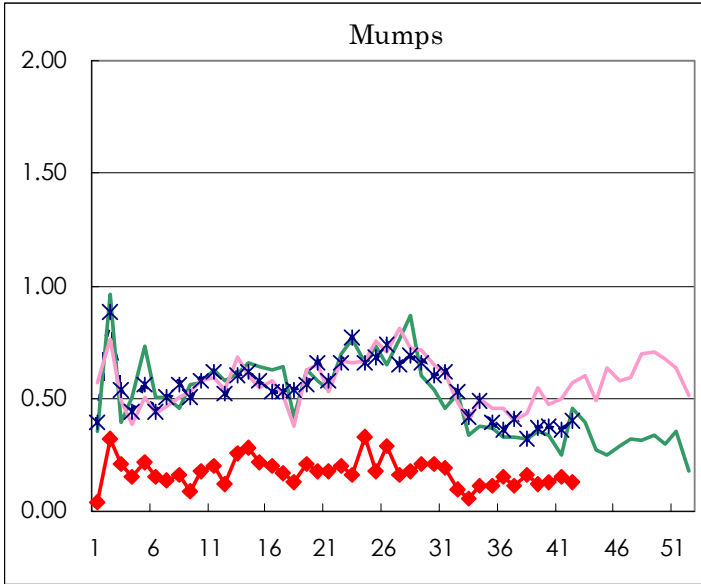
Diseases	Sex	Week(2003)				Total
		39th	40th	41st	42nd	
Influenza	M					13,398
	F					13,078
Pharygoconjunctival fever	M	11	11	7	4	645
	F	7	5	4	3	506
Group A streptococcal pharyngitis	M	30	22	33	25	1,643
	F	17	18	23	30	1,476
Infectious gastroenteritis	M	161	175	221	194	11,591
	F	154	170	187	189	10,769
Chickenpox	M	26	21	29	38	2,553
	F	16	24	26	35	2,144
Hand, foot, and mouth disease	M	50	43	16	18	3,629
	F	31	27	19	16	3,016
Erythema infectiosum	M	7	6	10	9	526
	F	5	7	9	10	523
Exanthem subitum	M	43	48	49	45	1,533
	F	47	42	30	30	1,499
Pertussis	M		1	1	1	19
	F		1	3	2	12
Rubella	M		2	2		61
	F		2	1		58
Herpangina	M	38	36	24	12	2,603
	F	31	27	12	10	2,350
Measles	M	3				184
	F	1			1	173
Mumps	M	9	8	13	12	598
	F	8	11	9	6	435
Cold with exanthems by Enterovirus	M	9	6	11	2	253
	F	4	6	4	4	236
Mucocutaneous Lymphnode Syndrome	M	1			2	29
	F					29
Acute hemorrhagic conjunctivitis	M					8
	F					8
Epidemic keratoconjunctivitis	M	10	20	7	6	435
	F	5	4	12	8	296
Acute encephalitis (excluding Japanese encephalitis)	M					2
	F					1
Bacterial meningitis	M					5
	F					6
Aseptic meningitis	M		1		1	33
	F	3	1			26
Mycoplasma pneumonia	M		1	5	7	60
	F	3	3	4	4	65
Chlamydial pneumonia (excluding psittacosis)	M					2
	F					
Measles in adults	M					80
	F				1	61

(Blank means 0.)

Disease Trend Graph (weekly reported cases per fixed-point in comparison)







Tokyo Metropolitan Government
Infectious Disease Surveillance Center

