

INFECTIOUS DISEASES WEEKLY REPORT

TOKYO IDWR

Tokyo Metropolitan Public Health Research Institute

4 November 2003 / Number 43

- Number of patients with the diseases required notifying all the cases
- Number of patients with the diseases to be reported by the designated clinics and hospitals
- Disease trend graph (weekly reported cases per fixed-point in comparison)

Surveillance System in Tokyo, Japan

The diseases which all physicians must report

All physicians must report to health centers the incidence of the diseases which are shown at page one. Health centers electronically report the individual case to Tokyo Metropolitan Infectious Disease Surveillance Center.

Fixed-point surveillance

The numbers of patients who visit designated clinics or hospitals during a week are reported to health centers (There are 37 in Tokyo). And they electronically report the numbers to Tokyo Metropolitan Infectious Disease Surveillance Center. We have about 200 fixed points (clinics and hospitals) in Tokyo.

1st Week is early January and 52nd Week is end of December.

Tokyo Metropolitan Infectious Disease Surveillance Center
Tokyo Metropolitan Institute of Public Health

TEL:81-3-3363-3213 FAX:81-3-5332-7365

e-mail: idsc@tokyo-eiken.go.jp

URL: idsc.tokyo-eiken.go.jp/

Number of patients with the diseases which all physicians must report

Category	Diseases	Tokyo					Japan	
		40th	41st	42nd	43rd	Total	43rd	Total
I	Ebola hemorrhagic fever							
	Crimean-Congo hemorrhagic fever							
	Plague							
	Marburg disease							
	Lassa fever							
II	Cholera					4	1	20
	Shigellosis	2	4	6	5	91	10	411
	Typhoid fever	2				17		51
	Paratyphoid fever					5		29
	Acute poliomyelitis							
	Diphtheria							
III	Enterohemorrhagic <i>Escherichia coli</i> infection	5	7	2	3	164	52	2209
IV	Amebiasis	3	1	3	2	98	1	414
	Echinococcosis							16
	Yellow fever							
	Psittacosis					2	1	38
	Relapsing fever							
	Acute viral hepatitis	1	1			62	3	566
	Q fever					1		7
	Rabies							
	Cryptosporidiosis			1		5		7
	Creutzfeldt-Jakob Disease					11	1	94
	Sever invasive streptococcal infections					5		45
	Acquired immunodeficiency syndrome	6	15	4	8	297	6	734
	Coccidioidomycosis							1
	Giardiasis		1			27		81
	Hemorrhagic fever with renal syndrome							
	Meningococcal meningitis					4		16
	Congenital rubella syndrome							1
	Anthrax							
	Scrub typhus (Tsutsugamushi disease)	1				1	3	152
	Dengue fever			2		13	1	26
	Japanese spotted fever						1	45
	Japanese encephalitis							
	Infant botulism							
	Syphilis			1		55	4	393
	Tetanus					3		55
	Vancomycin-resistant <i>enterococcus</i> infection					3	1	49
	Hantavirus pulmonary syndrome							
	Helpes B virus infection							
	Brucellosis							
	Epidemic typhus							
Malaria		3	3		29		67	
Lyme disease							4	
Legionellosis			2		15	1	123	
West Nile fever								

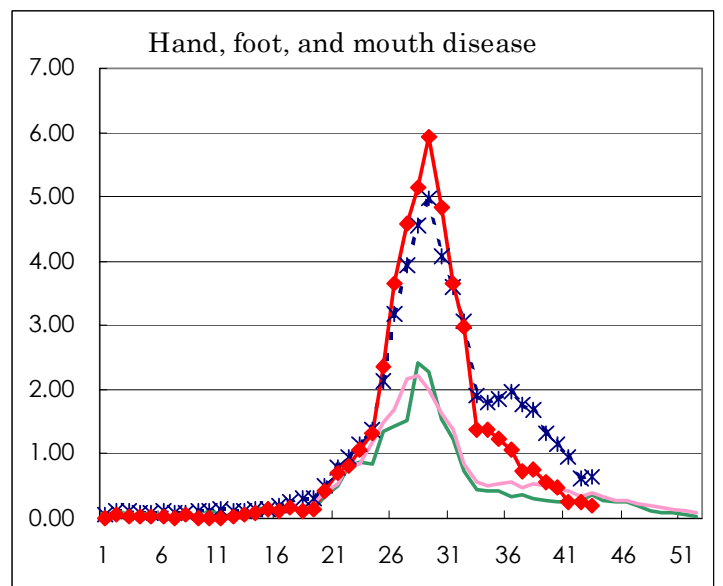
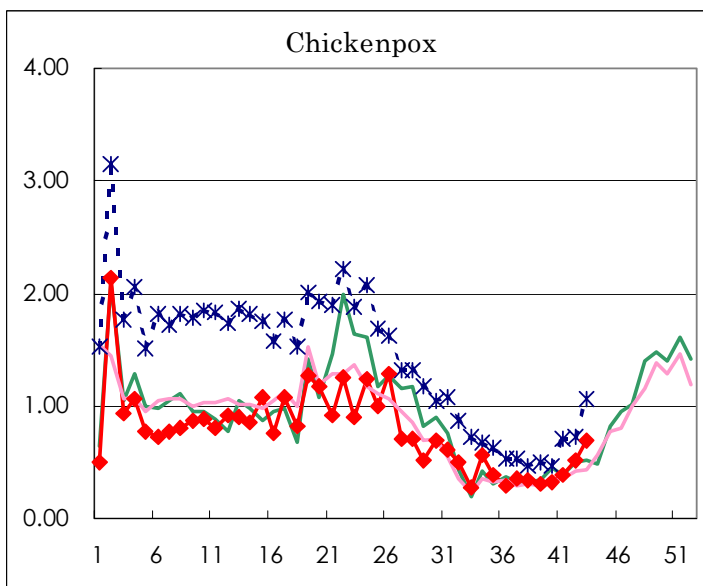
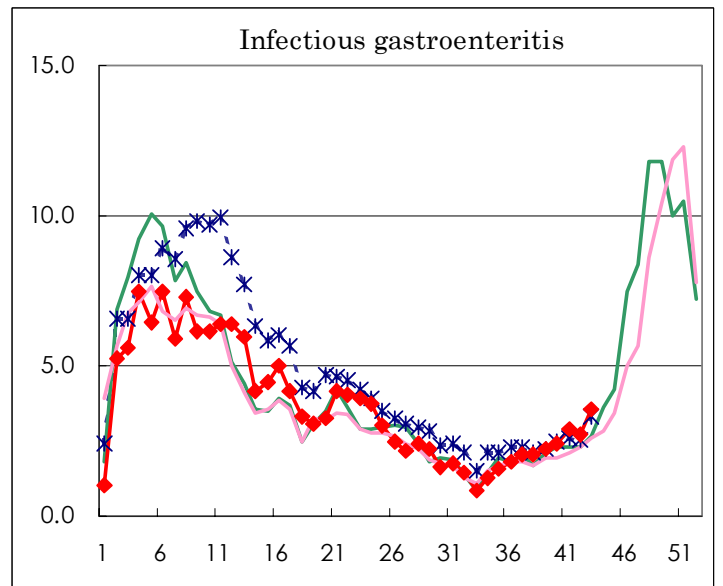
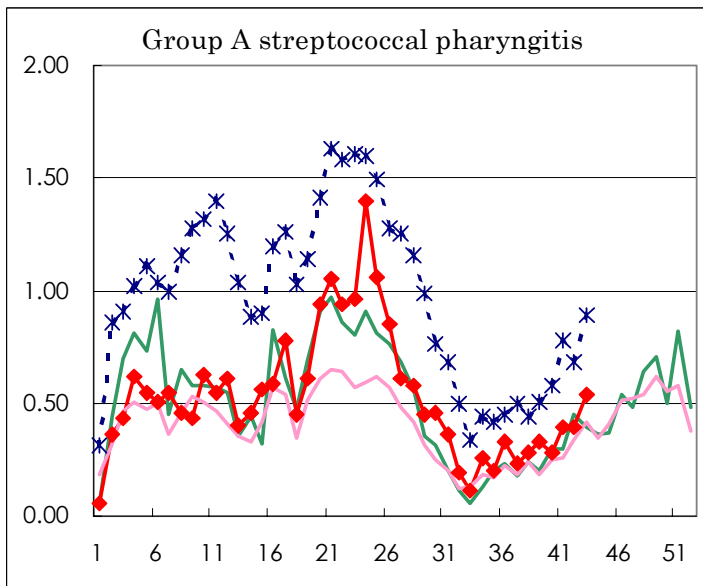
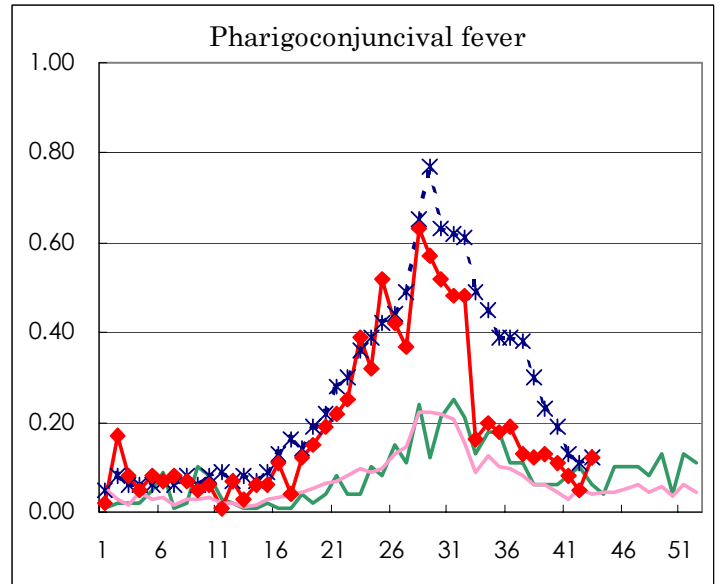
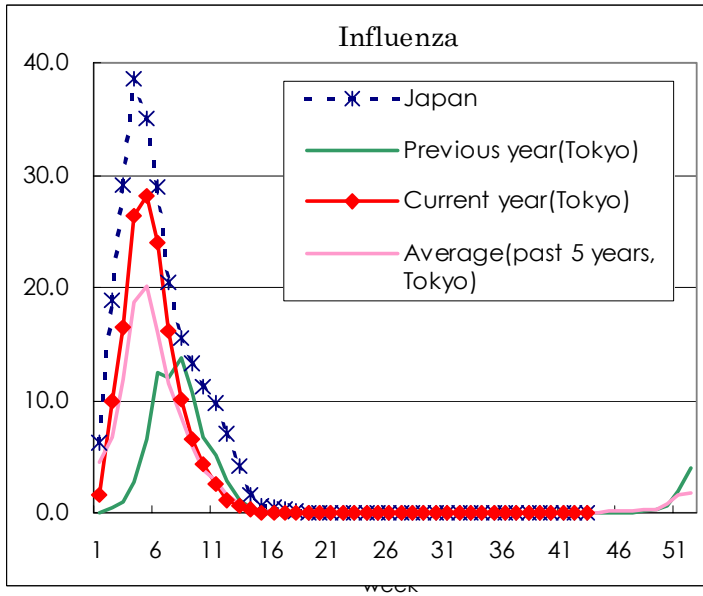
(Blank means 0.)

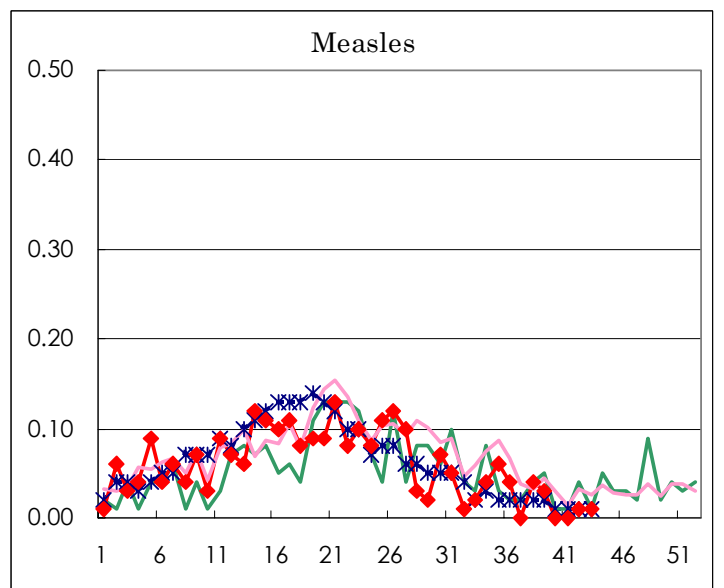
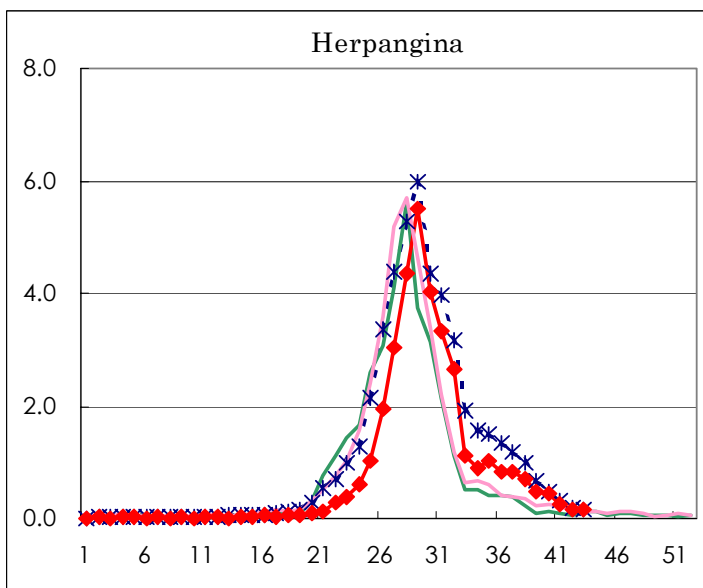
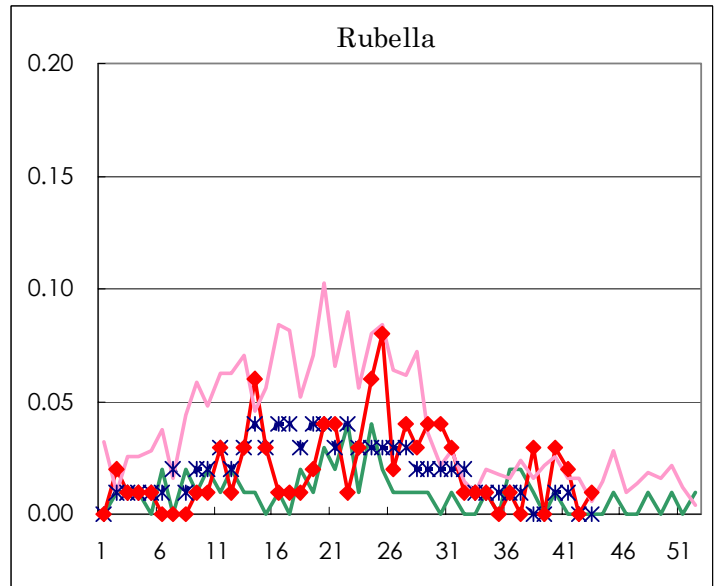
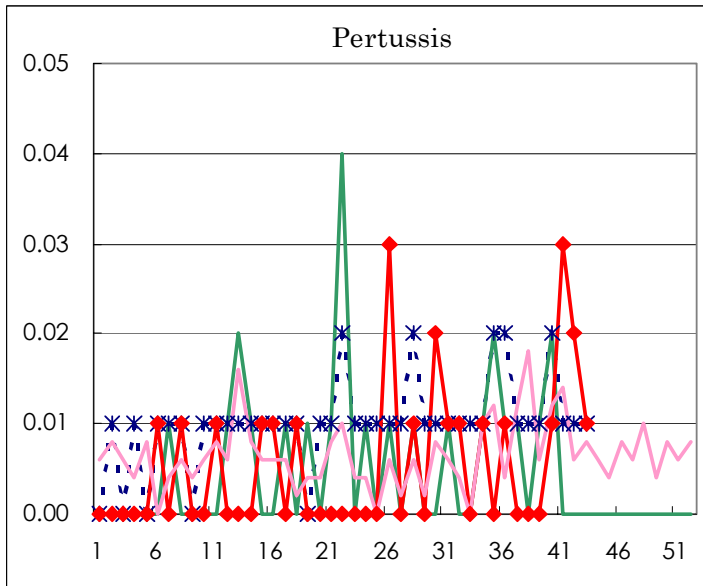
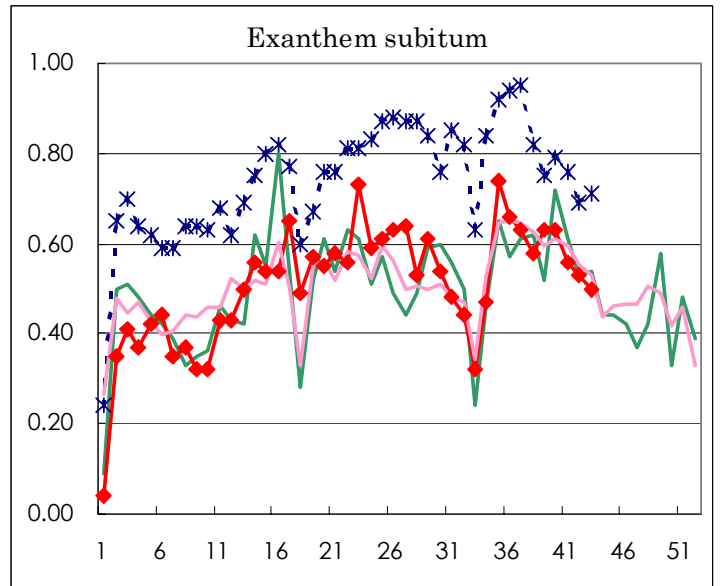
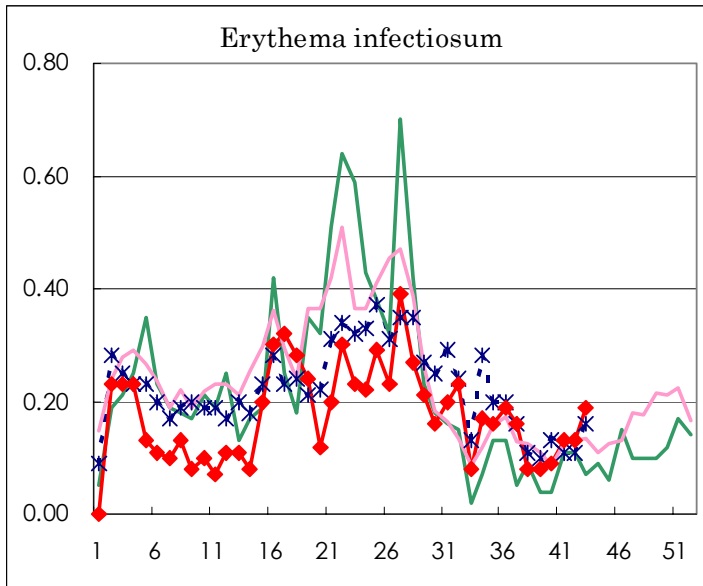
Number of patients with the diseases to be reported
by the designated clinics and hospitals

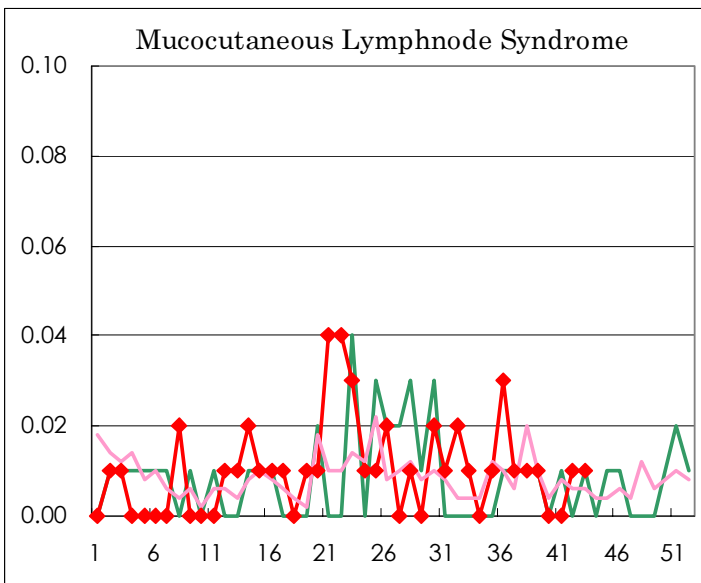
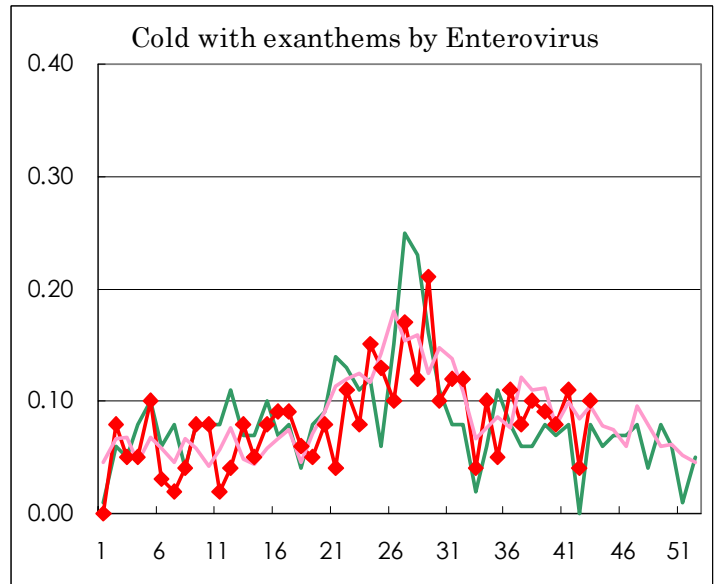
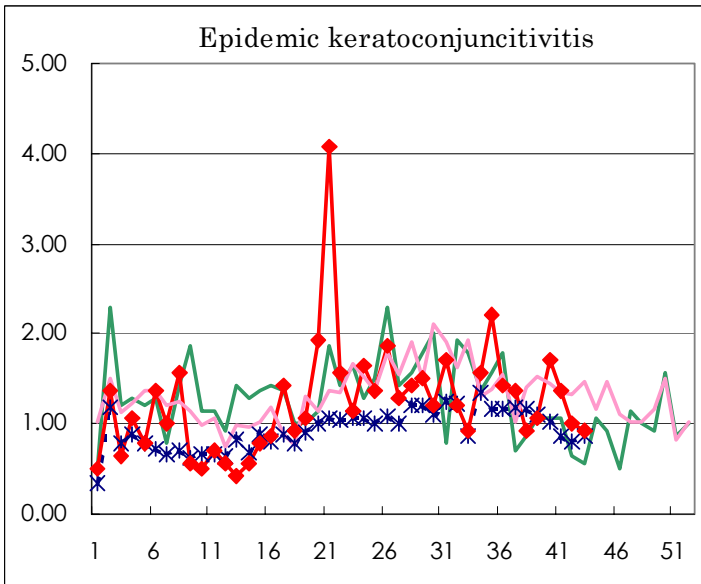
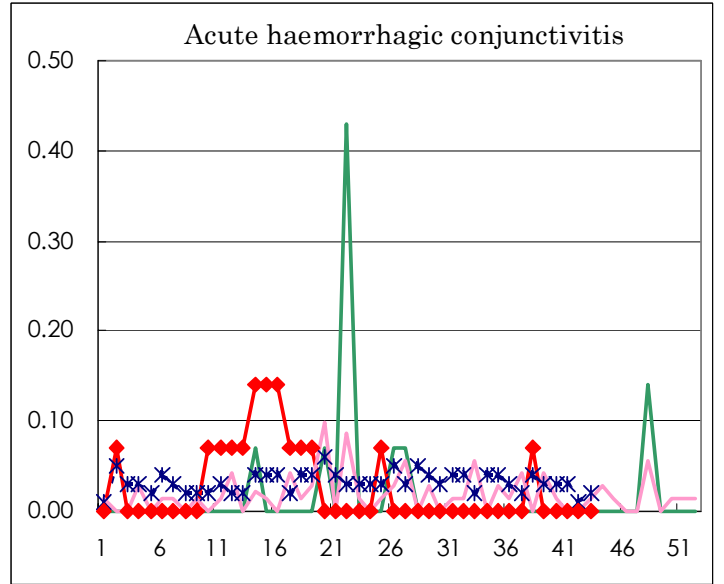
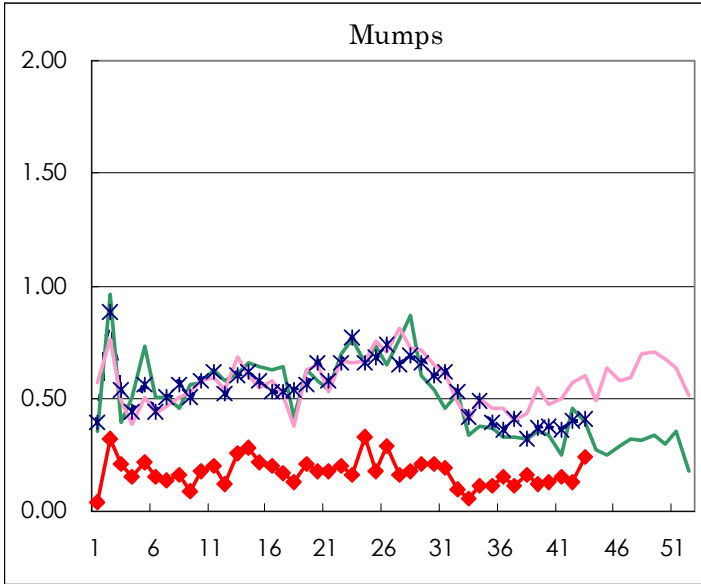
Diseases	Sex	Week(2003)				Total
		40th	41st	42nd	43rd	
Influenza	M				1	13,399
	F					13,078
Pharygoconjunctival fever	M	11	7	4	9	654
	F	5	4	3	8	514
Group A streptococcal pharyngitis	M	22	33	25	38	1,681
	F	18	23	30	39	1,515
Infectious gastroenteritis	M	175	221	194	267	11,858
	F	170	187	189	241	11,010
Chickenpox	M	21	29	38	50	2,604
	F	24	26	35	48	2,192
Hand, foot, and mouth disease	M	43	16	18	17	3,646
	F	27	19	16	12	3,028
Erythema infectiosum	M	6	10	9	11	537
	F	7	9	10	16	539
Exanthem subitum	M	48	49	45	37	1,570
	F	42	30	30	35	1,537
Pertussis	M	1	1	1		19
	F	1	3	2	1	13
Rubella	M	2	2		2	63
	F	2	1			58
Herpangina	M	36	24	12	11	2,614
	F	27	12	10	10	2,361
Measles	M				1	185
	F			1	1	174
Mumps	M	8	13	12	19	617
	F	11	9	6	15	450
Cold with exanthems by Enterovirus	M	6	11	2	8	262
	F	6	4	4	6	242
Mucocutaneous Lymphnode Syndrome	M			2	1	30
	F					29
Acute hemorrhagic conjunctivitis	M					8
	F					8
Epidemic keratoconjunctivitis	M	20	7	6	10	445
	F	4	12	8	3	299
Acute encephalitis (excluding Japanese encephalitis)	M					2
	F					1
Bacterial meningitis	M					5
	F				1	7
Aseptic meningitis	M	1		1		33
	F	1				26
Mycoplasma pneumonia	M	1	5	7	5	65
	F	3	4	4	2	67
Chlamydial pneumonia (excluding psittacosis)	M				1	3
	F					
Measles in adults	M					80
	F			1		61

(Blank means 0.)

Disease Trend Graph (weekly reported cases per fixed-point in comparison)







Tokyo Metropolitan Government
Infectious Disease Surveillance Center

