

INFECTIOUS DISEASES WEEKLY REPORT

TOKYO IDWR

Tokyo Metropolitan Public Health Research Institute

18 November 2003 / Number 45

- Number of patients with the diseases required notifying all the cases
- Number of patients with the diseases to be reported by the designated clinics and hospitals
- Disease trend graph (weekly reported cases per fixed-point in comparison)

Surveillance System in Tokyo, Japan

The diseases which all physicians must report

All physicians must report to health centers the incidence of the diseases which are shown at page one. Health centers electronically report the individual case to Tokyo Metropolitan Infectious Disease Surveillance Center.

Fixed-point surveillance

The numbers of patients who visit designated clinics or hospitals during a week are reported to health centers (There are 37 in Tokyo). And they electronically report the numbers to Tokyo Metropolitan Infectious Disease Surveillance Center. We have about 200 fixed points (clinics and hospitals) in Tokyo.

1st Week is early January and 52nd Week is end of December.

Tokyo Metropolitan Infectious Disease Surveillance Center
Tokyo Metropolitan Institute of Public Health

TEL:81-3-3363-3213 FAX:81-3-5332-7365

e-mail: idsc@tokyo-eiken.go.jp

URL: idsc.tokyo-eiken.go.jp/

Number of patients with the diseases which all physicians must report

Category	Diseases	Tokyo				Japan		
		42nd	43rd	44th	45th	Total	45th	Total
I	Ebola hemorrhagic fever							
	Crimean-Congo hemorrhagic fever							
	Severe acute respiratory syndrome							
	Smallpox							
	Plague							
	Marburg disease							
	Lassa fever							
II	Acute poliomyelitis							
	Cholera					4	1	21
	Shigellosis	6	5	2	2	95	8	423
	Diphtheria							
	Typhoid fever				1	18	1	53
	Paratyphoid fever					5	2	31
III	Enterohemorrhagic <i>Escherichia coli</i> infection	2	3	4	1	169	24	2274
IV	Hepatitis E					(1)		
	West Nile fever							
	Hepatitis A				1	(31)		
	Echinococcosis							17
	Yellow fever							
	Psittacosis					2	1	39
	Relapsing fever							
	Q fever					1		7
	Rabies							
	High pathogenic avian influenza							
	Coccidioidomycosis							1
	Monkeypox							
	Hemorrhagic fever with renal syndrome							
	Anthrax							
	Scrub typhus (Tsutsugamushi disease)					1	8	168
	Dengue fever	2		1		14		28
	Nipah virus infection							
	Japanese spotted fever						1	49
	Japanese encephalitis						1	1
	Hantavirus pulmonary syndrome							
	B virus disease							
	Brucellosis							
	Epidemic typhus							
Botulism								
Malaria	3				29		67	
Tularemia								
Lyme disease							5	
Lyssavirus infection								
Legionellosis	2		1		16	1	128	
Leptospirosis								

(Blank means 0.)

Number of patients with the diseases which all physicians must report

Category	Diseases	Tokyo					Japan	
		42nd	43rd	44th	45th	Total	45th	Total
V	Amebiasis	3	2	3	2	103	4	432
	Acute viral hepatitis(excluding Hepatitis A,Hepatitis E)					(31)		573
	Acute encephalitis							
	Cryptosporidiosis	1		1		6		8
	Creutzfeldt-Jakob Disease				1	12		101
	Sever invasive streptococcal infections					5	1	48
	Acquired immunodeficiency syndrome	4	8	6	4	307	8	765
	Giardiasis			1		28		86
	Meningococcal meningitis					4		16
	Congenital rubella syndrome							1
	Syphilis	1		1		56	3	410
	Tetanus					3	1	63
	Vancomycin-resistant <i>Staphylococcus aureus</i> infection							
	Vancomycin-resistant <i>enterococcus</i> infection					3		51

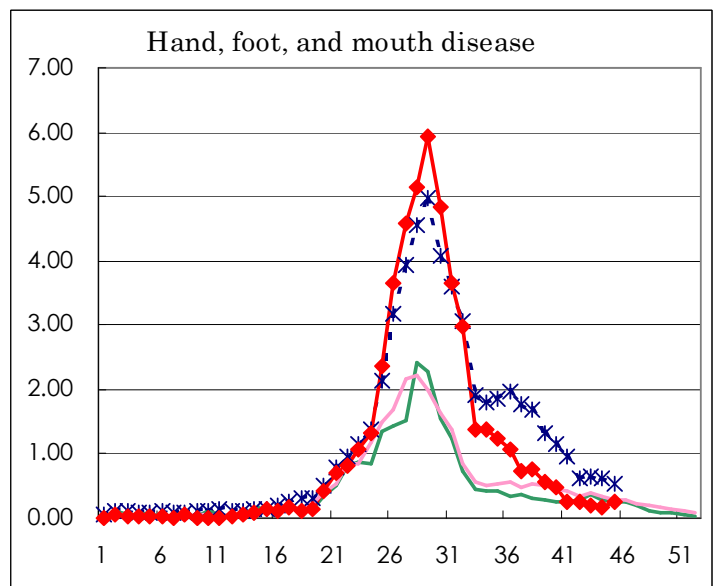
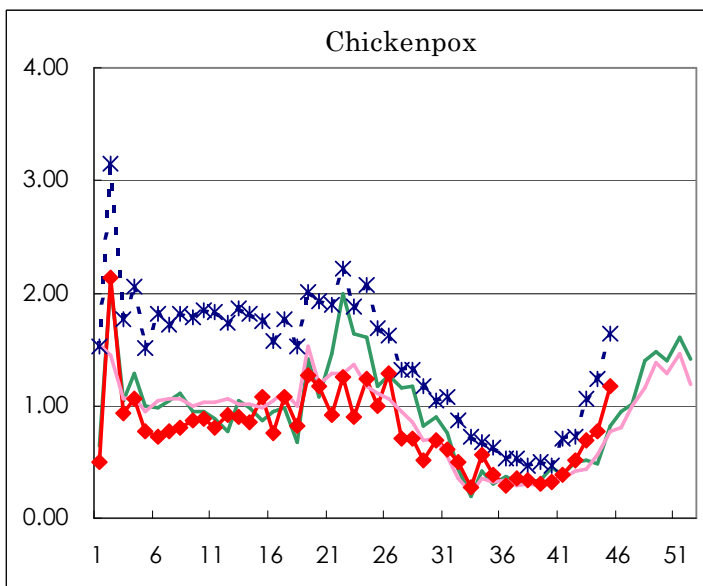
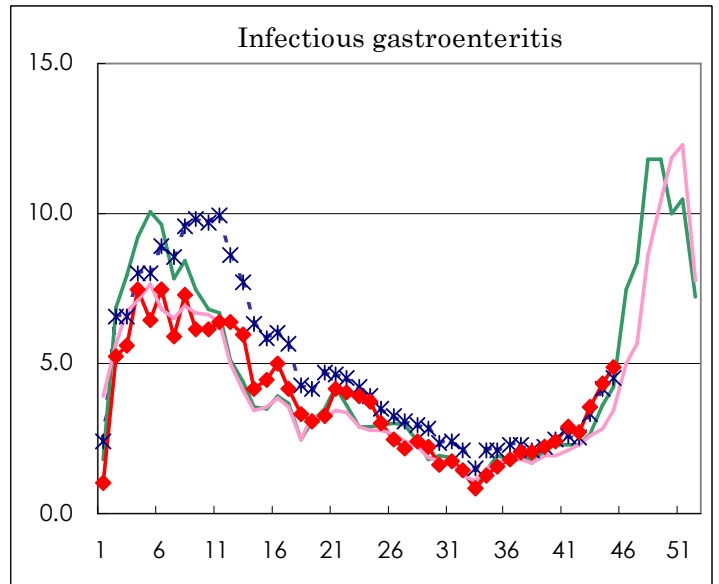
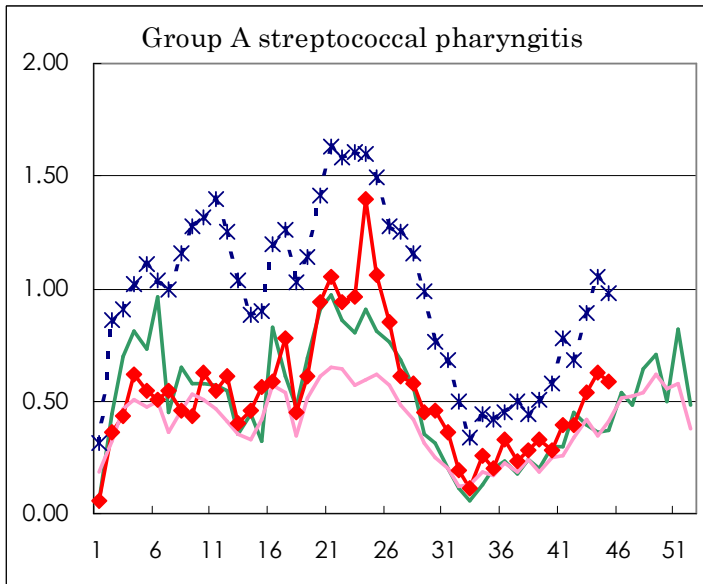
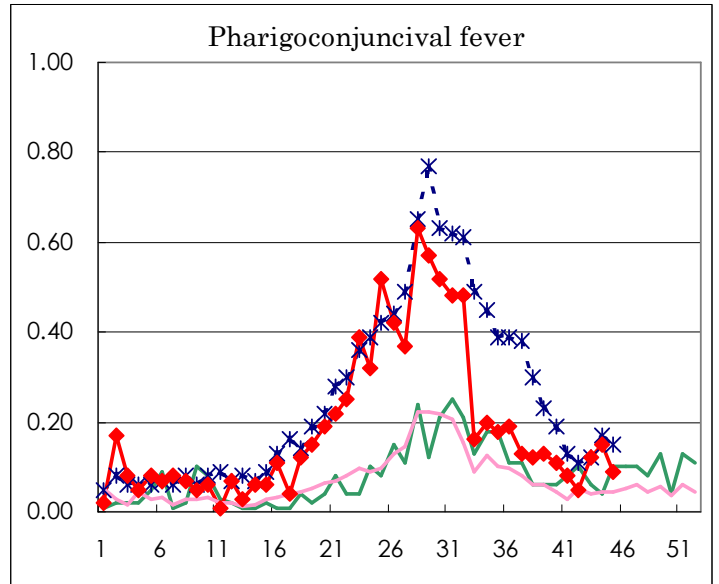
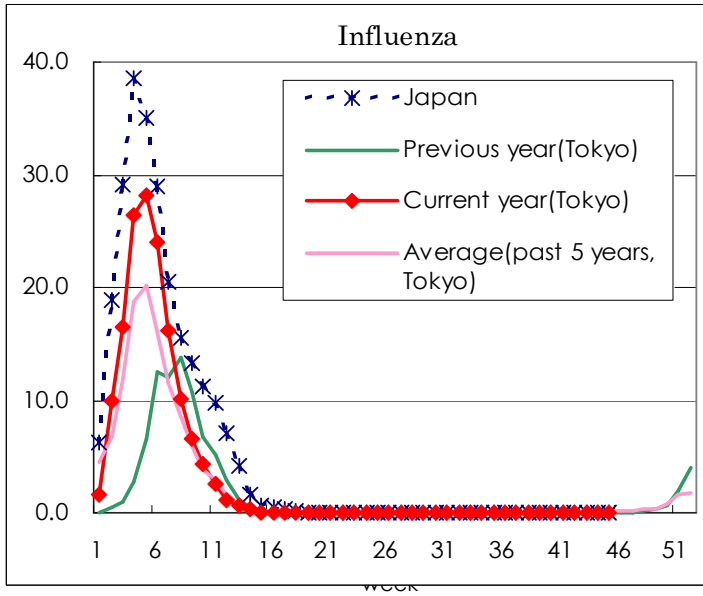
(Blank means 0.)

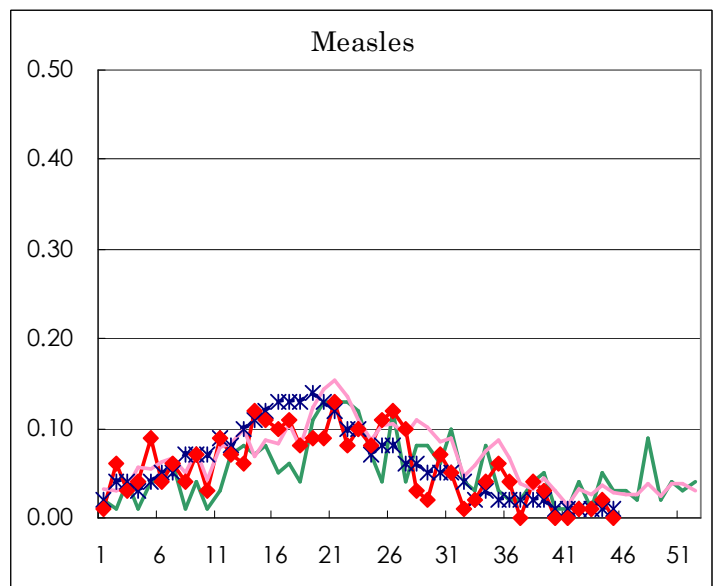
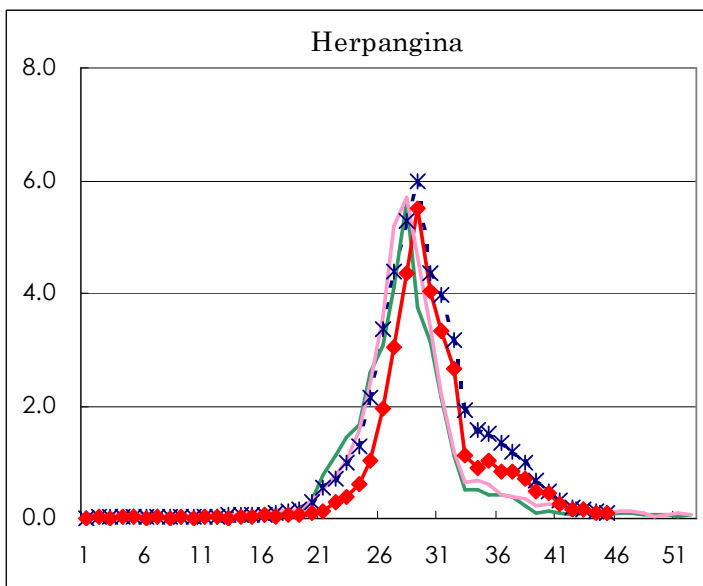
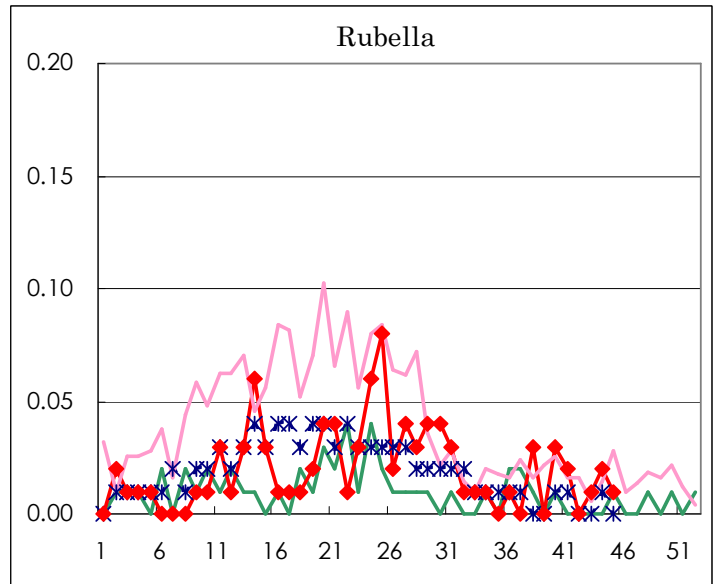
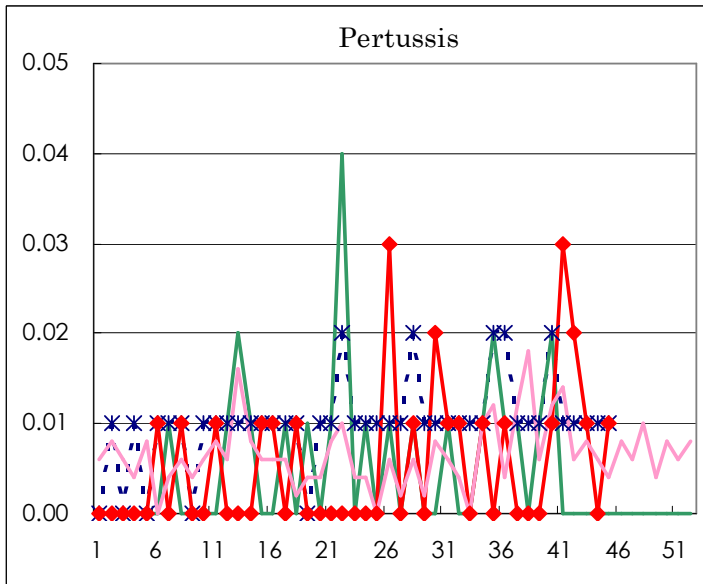
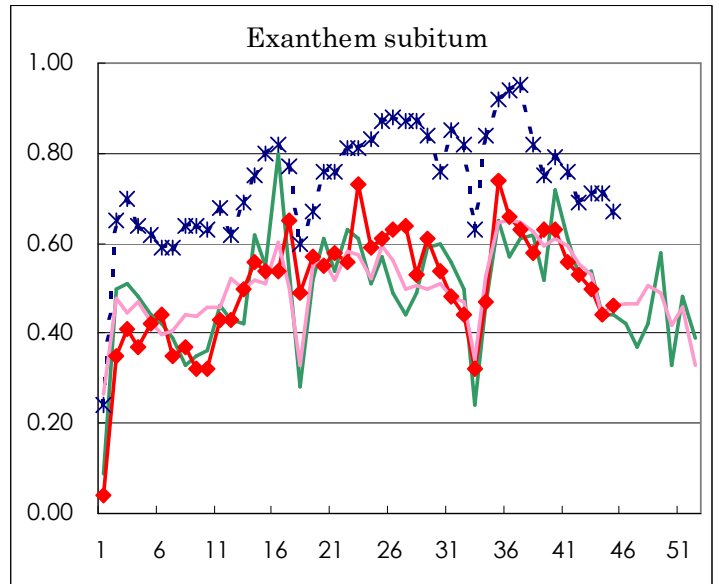
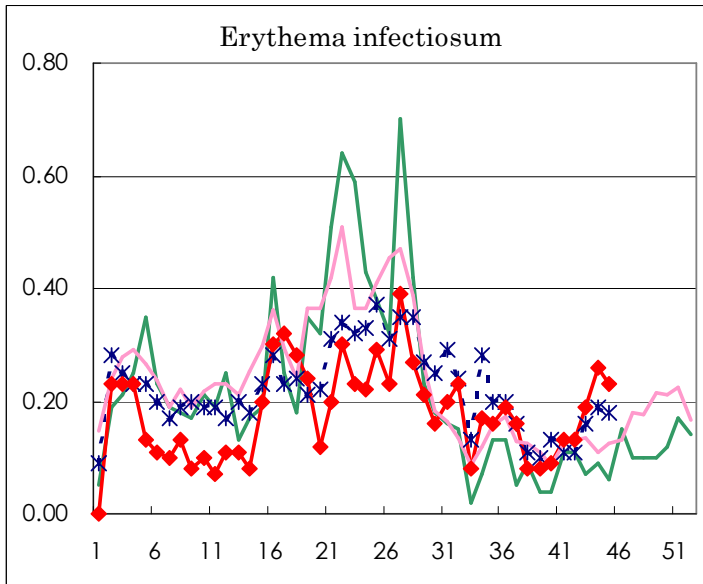
Number of patients with the diseases to be reported
by the designated clinics and hospitals

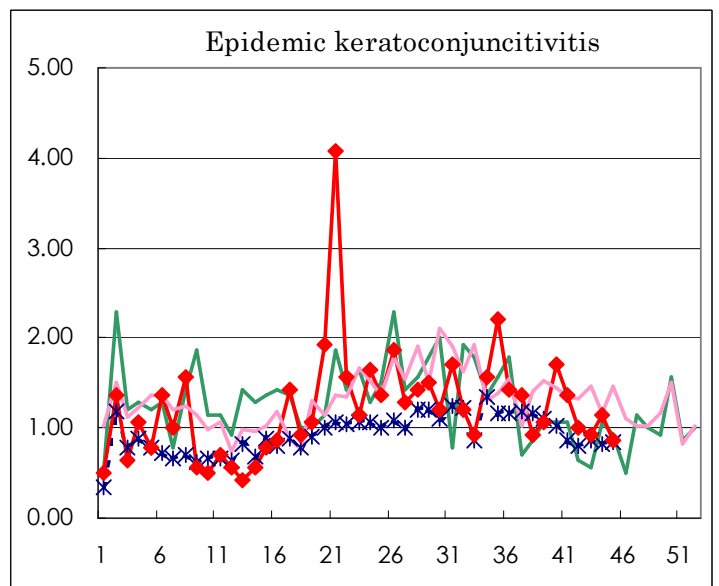
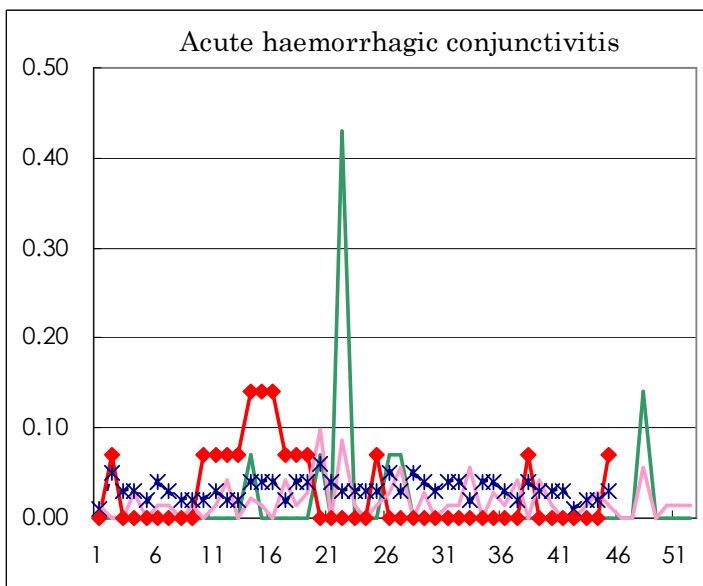
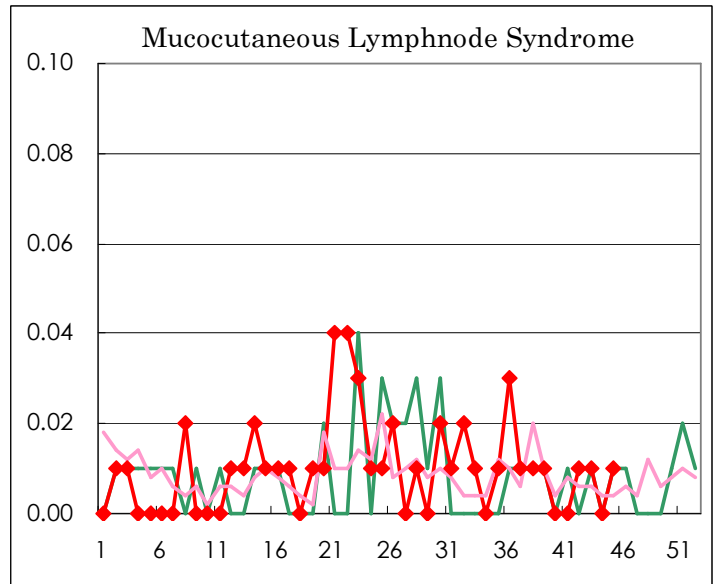
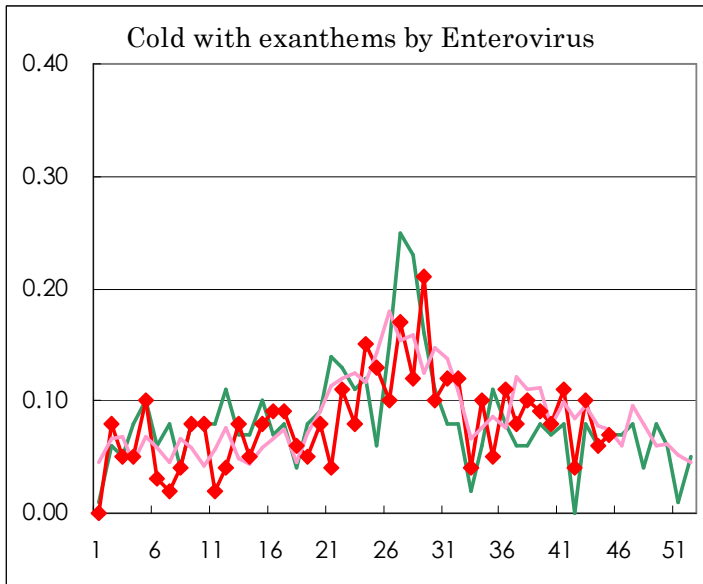
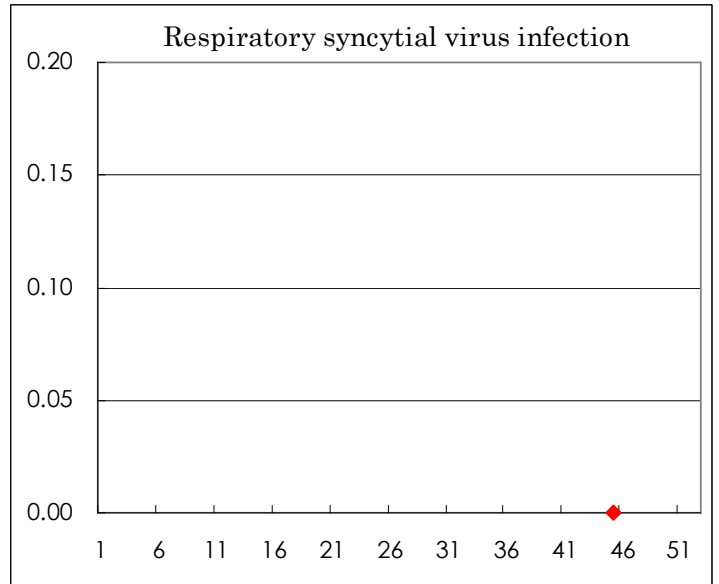
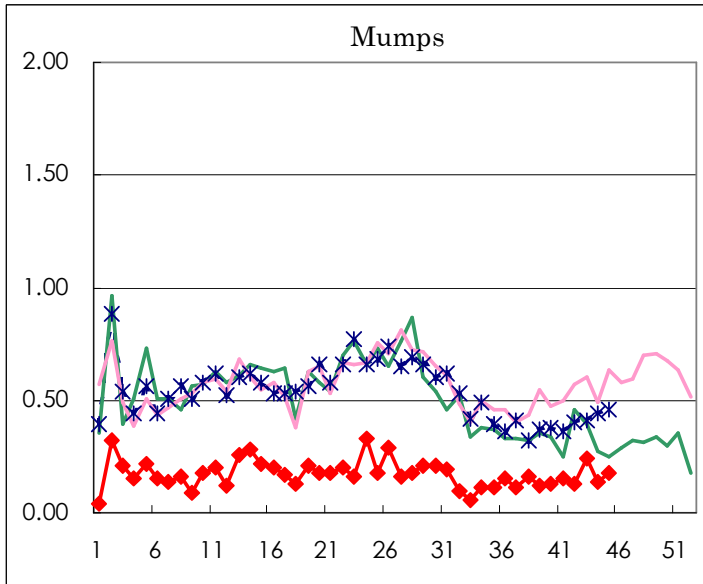
Diseases	Sex	Week(2003)				Total
		42nd	43rd	44th	45th	
Respiratory syncytial virus infection	M					
	F					
Influenza	M		1	1		13,400
	F			2	1	13,080
Pharygoconjunctival fever	M	4	9	11	6	665
	F	3	8	11	7	525
Group A streptococcal pharyngitis	M	25	38	47	43	1,728
	F	30	39	43	41	1,558
Infectious gastroenteritis	M	194	267	315	366	12,173
	F	189	241	298	327	11,308
Chickenpox	M	38	50	64	84	2,668
	F	35	48	46	83	2,238
Hand, foot, and mouth disease	M	18	17	12	20	3,658
	F	16	12	13	14	3,041
Erythema infectiosum	M	9	11	19	16	556
	F	10	16	18	16	557
Exanthem subitum	M	45	37	32	31	1,602
	F	30	35	31	35	1,568
Pertussis	M	1			1	19
	F	2	1			13
Rubella	M		2	1		64
	F			2	1	60
Herpangina	M	12	11	8	5	2,622
	F	10	10	8	9	2,369
Measles	M		1			185
	F	1	1	3		177
Mumps	M	12	19	15	15	632
	F	6	15	5	10	455
Cold with exanthems by Enterovirus	M	2	8	3	4	265
	F	4	6	6	6	248
Mucocutaneous Lymphnode Syndrome	M	2	1			30
	F				1	29
Acute hemorrhagic conjunctivitis	M					8
	F				1	8
Epidemic keratoconjunctivitis	M	6	10	10	7	455
	F	8	3	6	5	305
Bacterial meningitis	M				2	5
	F		1			7
Aseptic meningitis	M	1		1		34
	F					26
Mycoplasma pneumonia	M	7	5		4	66
	F	4	2	3	1	73
Chlamydial pneumonia (excluding psittacosis)	M		1			3
	F					
Measles in adults	M				1	80
	F	1				61

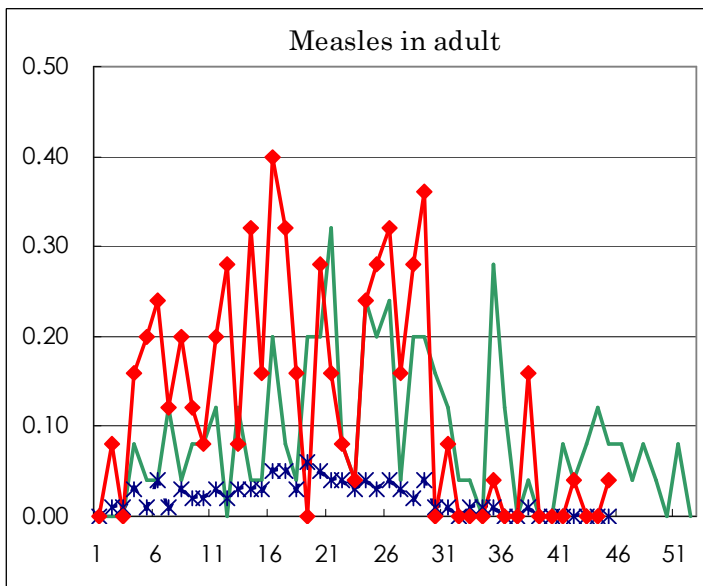
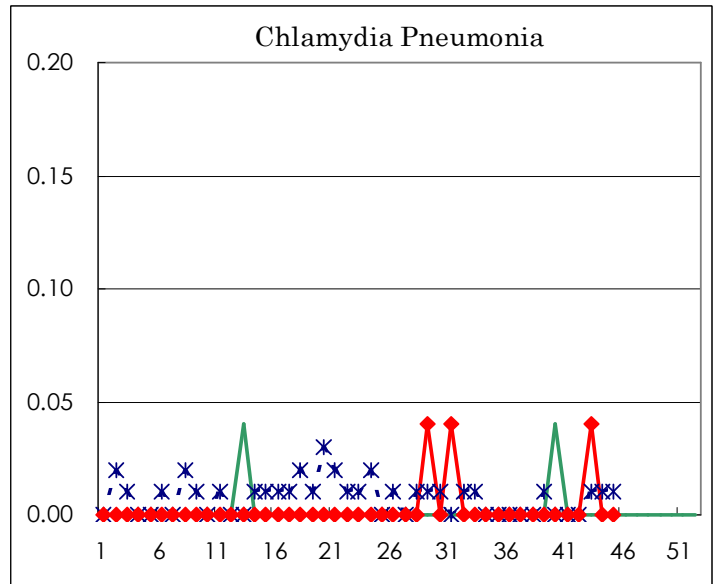
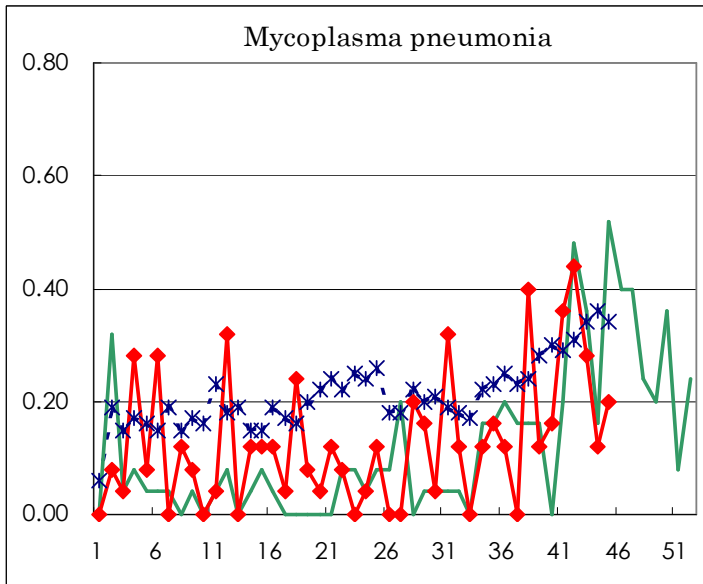
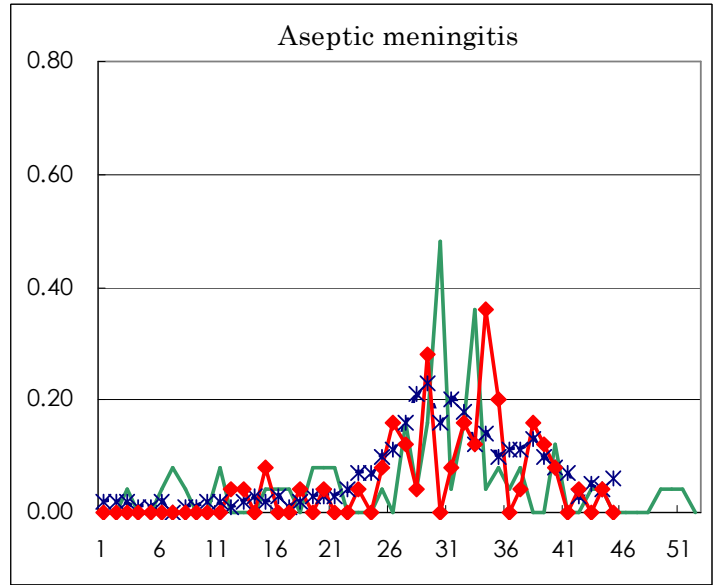
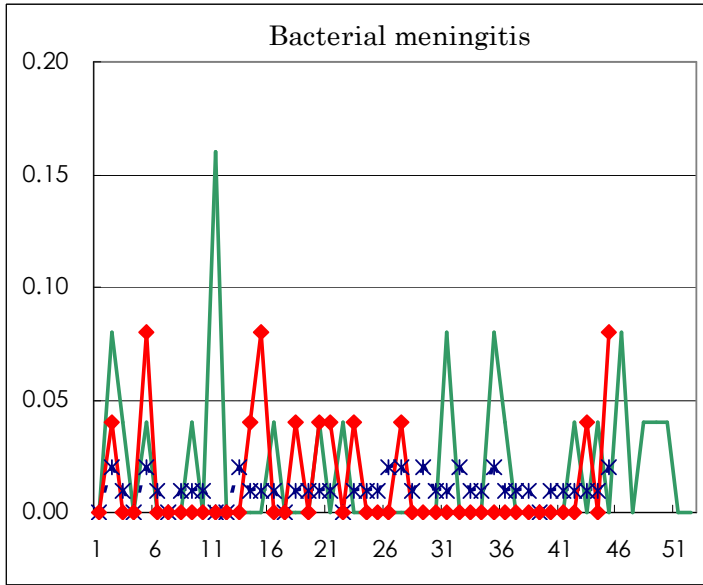
(Blank means 0.)

Disease Trend Graph (weekly reported cases per fixed-point in comparison)









Tokyo Metropolitan Government
Infectious Disease Surveillance Center