

INFECTIOUS DISEASES WEEKLY REPORT

TOKYO IDWR

Tokyo Metropolitan Public Health Research Institute

2 December 2003 / Number 47

- Number of patients with the diseases required notifying all the cases
- Number of patients with the diseases to be reported by the designated clinics and hospitals
- Disease trend graph (weekly reported cases per fixed-point in comparison)

Surveillance System in Tokyo, Japan

The diseases which all physicians must report

All physicians must report to health centers the incidence of the diseases which are shown at page one. Health centers electronically report the individual case to Tokyo Metropolitan Infectious Disease Surveillance Center.

Fixed-point surveillance

The numbers of patients who visit designated clinics or hospitals during a week are reported to health centers (There are 37 in Tokyo). And they electronically report the numbers to Tokyo Metropolitan Infectious Disease Surveillance Center. We have about 200 fixed points (clinics and hospitals) in Tokyo.

1st Week is early January and 52nd Week is end of December.

Tokyo Metropolitan Infectious Disease Surveillance Center
Tokyo Metropolitan Institute of Public Health

TEL:81-3-3363-3213 FAX:81-3-5332-7365

e-mail: idsc@tokyo-eiken.go.jp

URL: idsc.tokyo-eiken.go.jp/

Number of patients with the diseases which all physicians must report

Category	Diseases	Tokyo					Japan	
		44th	45th	46th	47th	Total	47th	Total
I	Ebola hemorrhagic fever							
	Crimean-Congo hemorrhagic fever							
	Severe acute respiratory syndrome							
	Smallpox							
	Plague							
	Marburg disease							
	Lassa fever							
II	Acute poliomyelitis							
	Cholera					4		22
	Shigellosis	2	2		1	96	4	430
	Diphtheria							
	Typhoid fever		1			18	1	56
	Paratyphoid fever				1	6	5	36
III	Enterohemorrhagic <i>Escherichia coli</i> infection	4	1	1	4	174	75	2384
IV	Hepatitis E						1	1
	West Nile fever							
	Hepatitis A		1			(1)	2	3
	Echinococcosis							17
	Yellow fever							
	Psittacosis					2		40
	Relapsing fever							
	Q fever					1		8
	Rabies							
	High pathogenic avian influenza							
	Coccidioidomycosis							1
	Monkeypox							
	Hemorrhagic fever with renal syndrome							
	Anthrax							
	Scrub typhus (Tsutsugamushi disease)					1	10	195
	Dengue fever	1		1		15		31
	Nipah virus infection							
	Japanese spotted fever							49
	Japanese encephalitis							1
	Hantavirus pulmonary syndrome							
	B virus disease							
	Brucellosis							
	Epidemic typhus							
Botulism								
Malaria					29	1	70	
Tularemia								
Lyme disease							5	
Lyssavirus infection								
Legionellosis	1				16	2	132	
Leptospirosis								

(Blank means 0.)

Number of patients with the diseases which all physicians must report

Category	Diseases	Tokyo					Japan	
		44th	45th	46th	47th	Total	47th	Total
V	Amebiasis	3	2	3	2	108	5	448
	Acute viral hepatitis(excluding Hepatitis A,Hepatitis E)			2	2	(66)	3	598
	Acute encephalitis							
	Cryptosporidiosis	1				6		8
	Creutzfeldt-Jakob Disease		1		1	13	1	103
	Sever invasive streptococcal infections					5	1	49
	Acquired immunodeficiency syndrome	6	4	9	11	327	13	823
	Giardiasis	1				28	2	90
	Meningococcal meningitis					4	1	17
	Congenital rubella syndrome							1
	Syphilis	1	1	1	1	59	2	420
	Tetanus					3		64
	Vancomycin-resistant <i>Staphylococcus aureus</i> infection							
	Vancomycin-resistant <i>enterococcus</i> infection					3		54

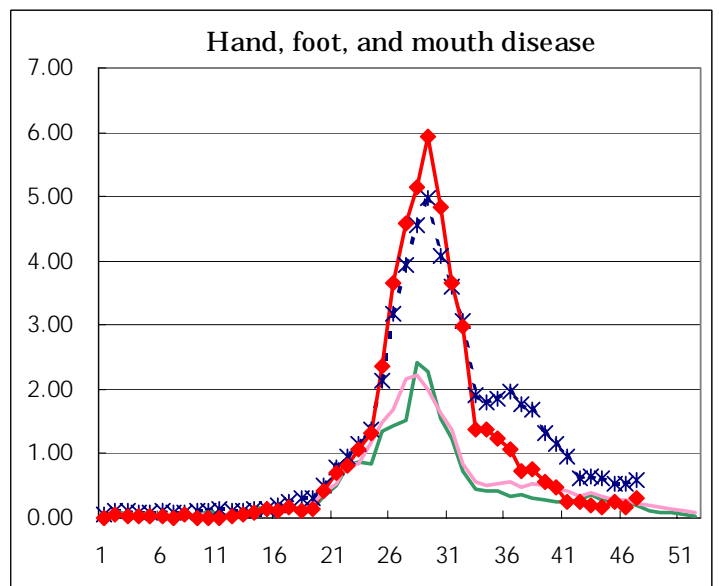
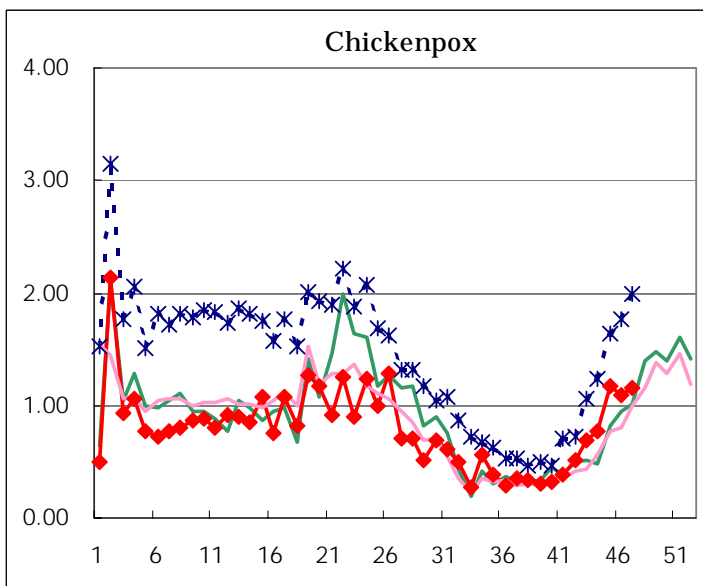
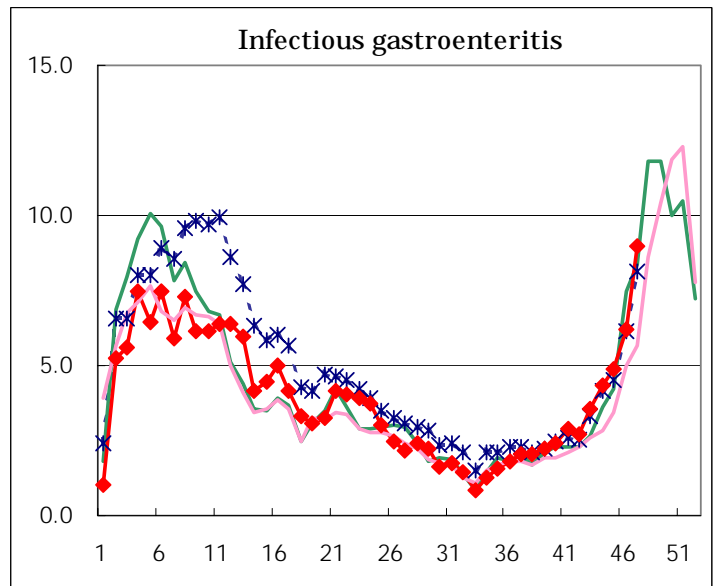
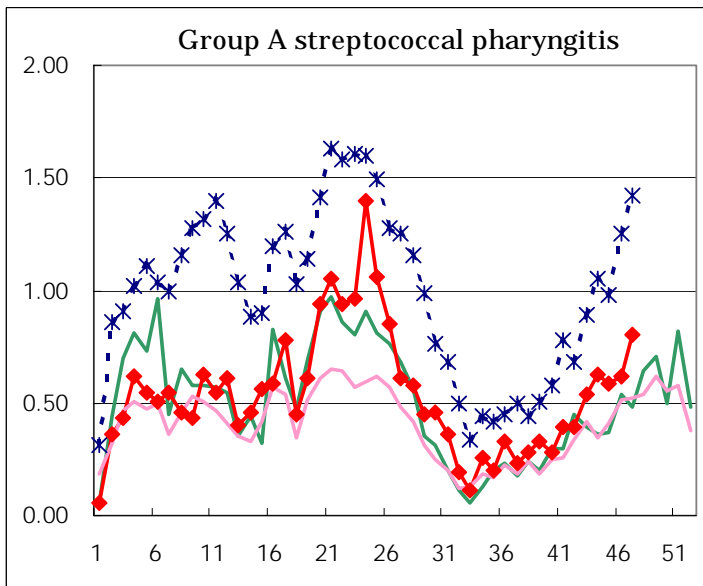
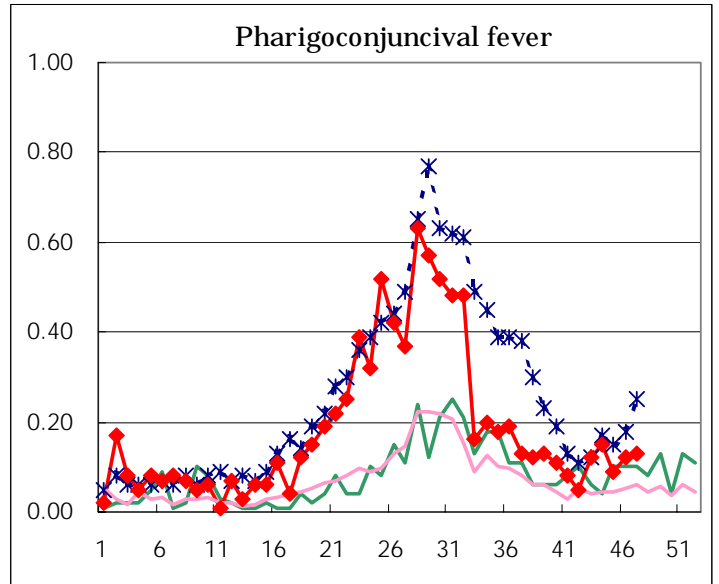
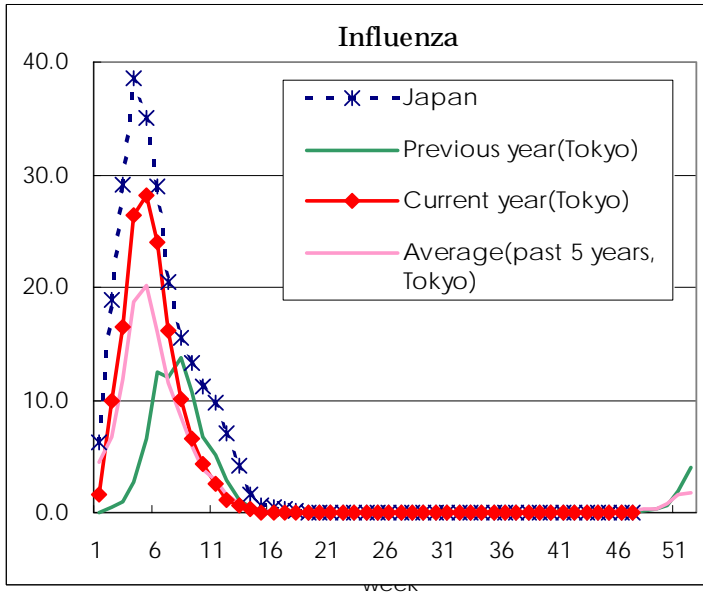
(Blank means 0.)

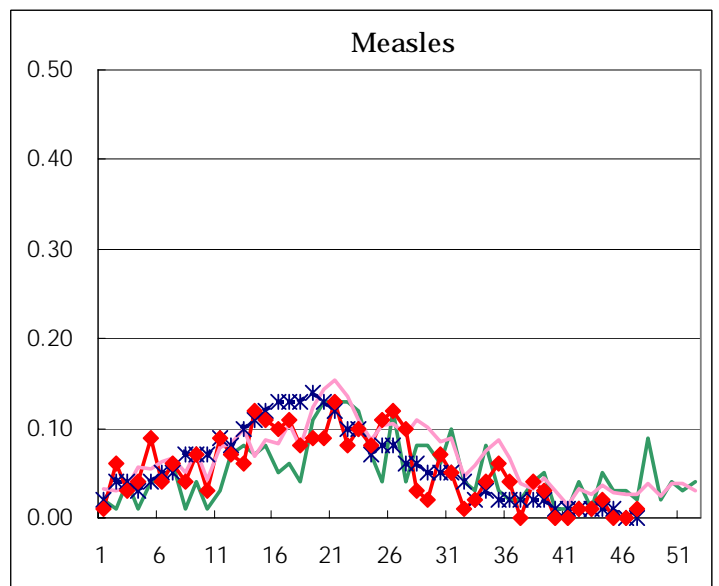
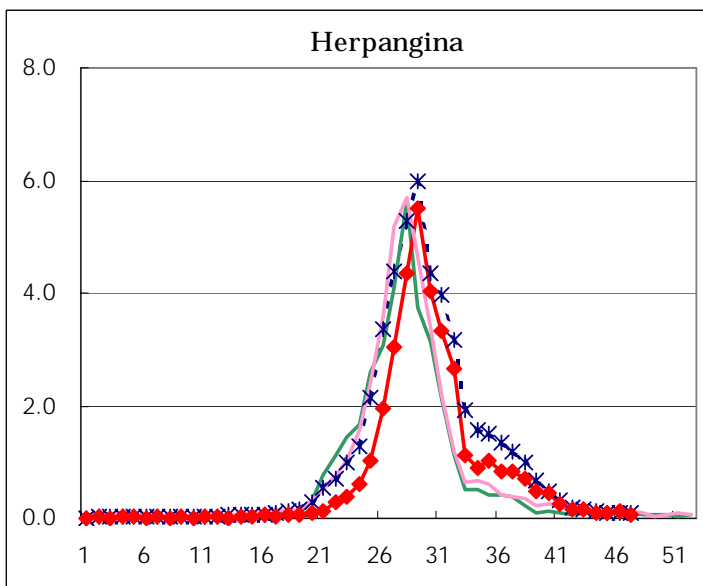
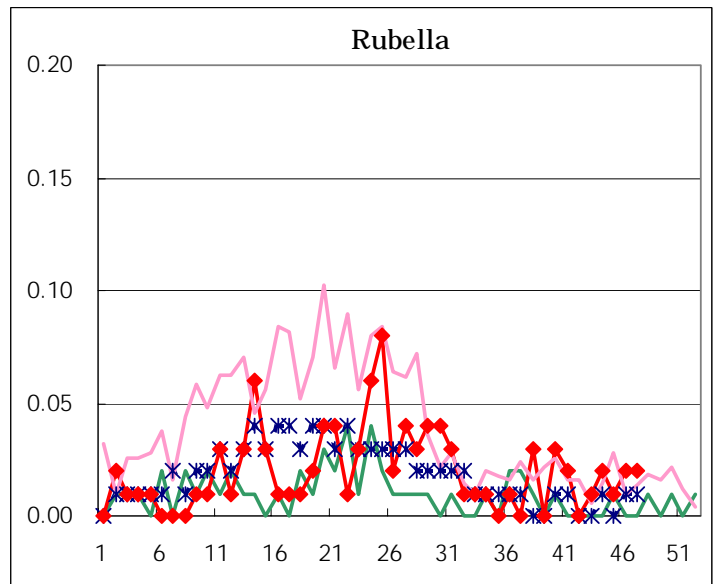
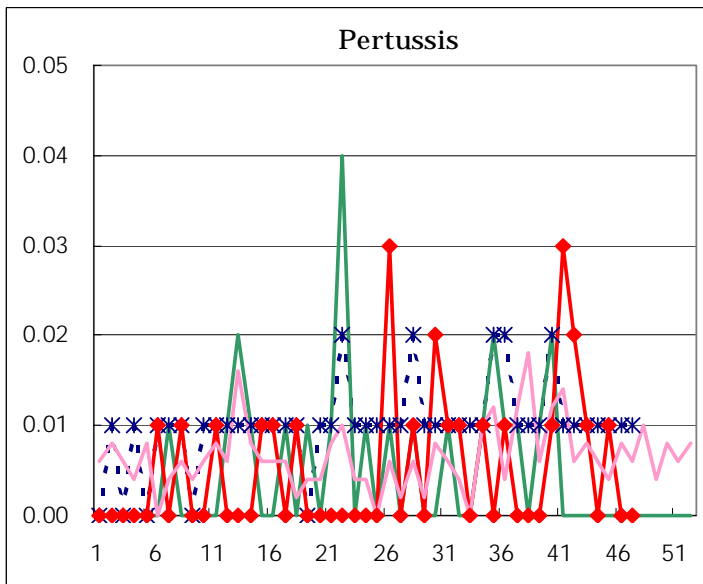
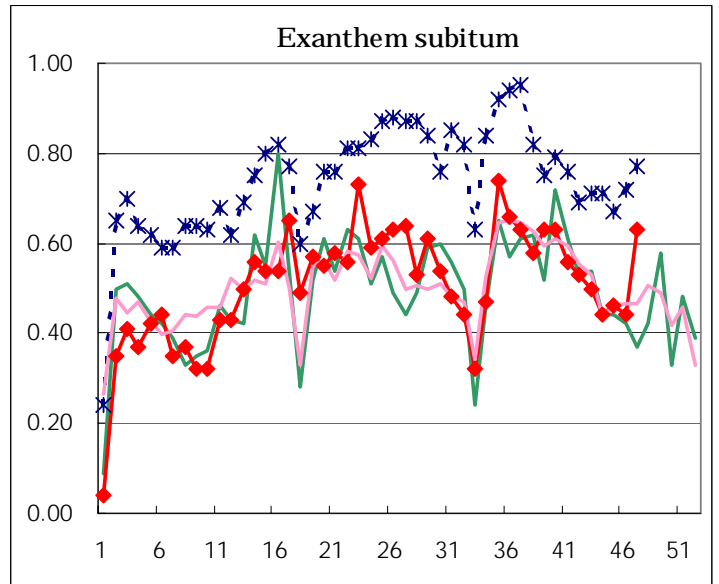
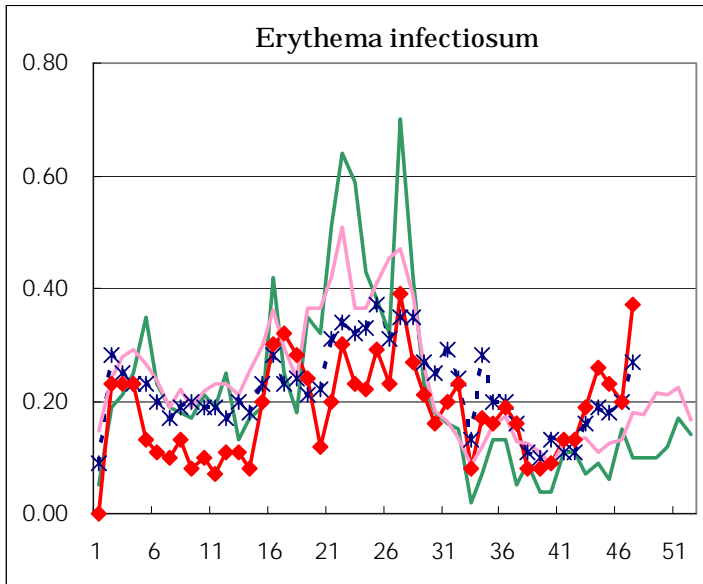
**Number of patients with the diseases to be reported
by the designated clinics and hospitals**

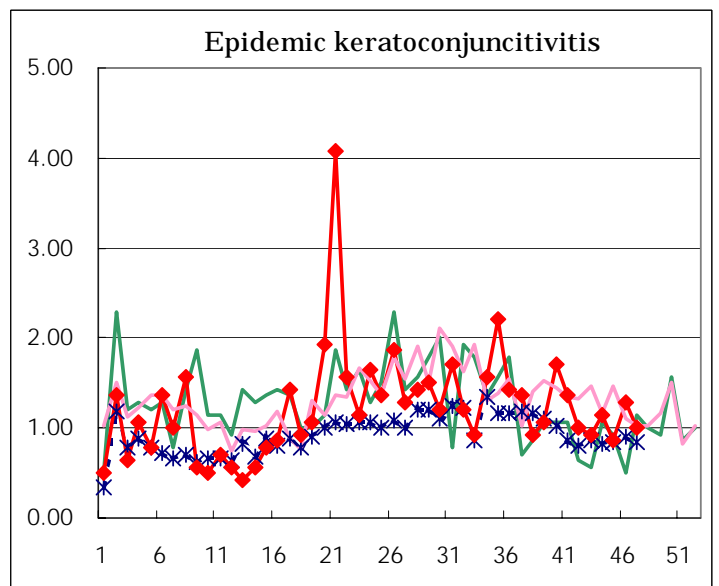
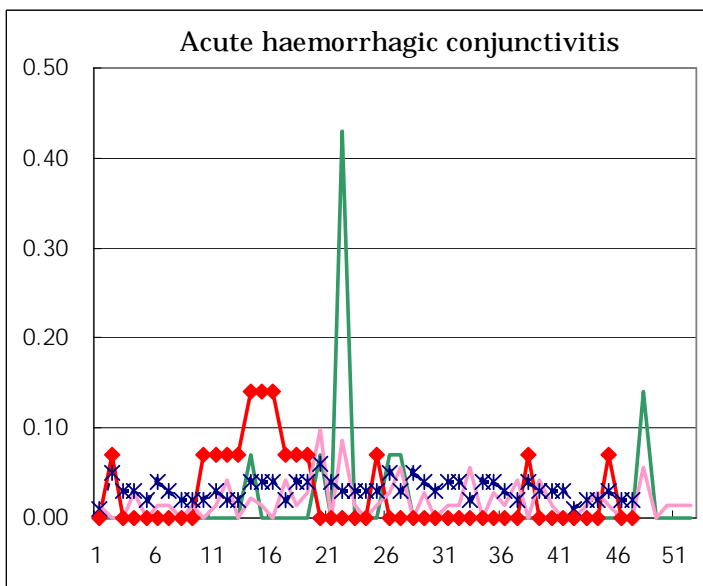
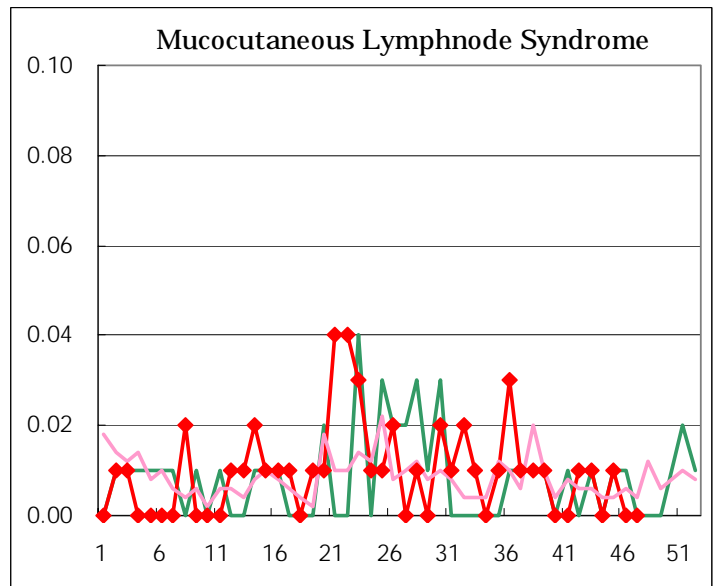
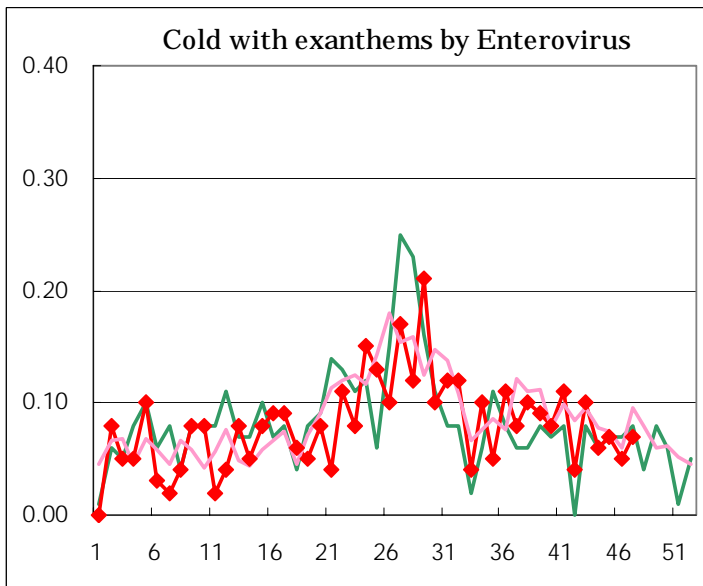
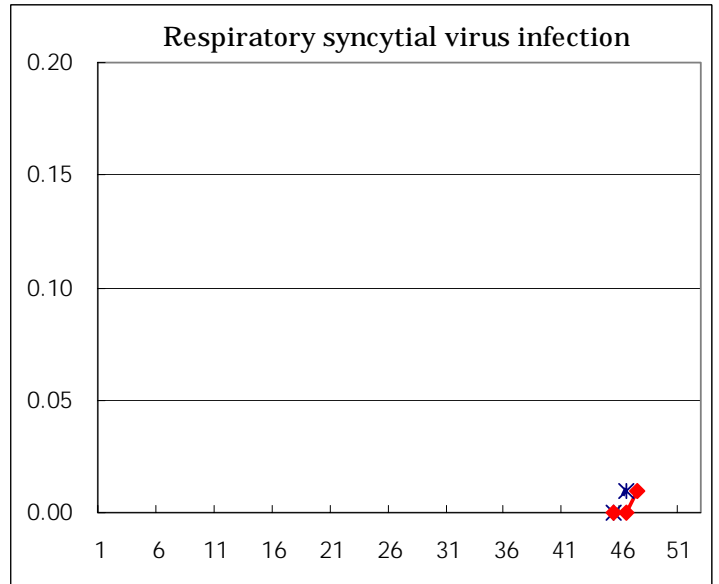
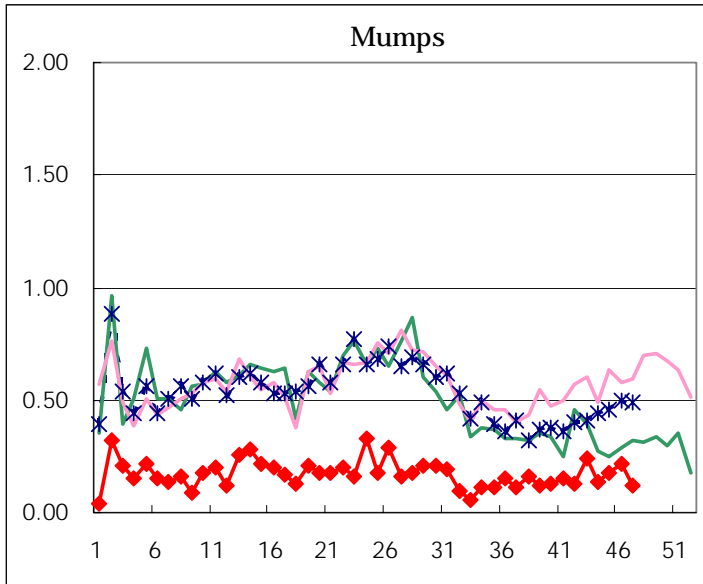
Diseases	Sex	Week(2003)				Total
		44th	45th	46th	47th	
Respiratory syncytial virus infection	M				1	1
	F				1	1
Influenza	M	1		1	6	13,407
	F	2	1		6	13,087
Pharygoconjunctival fever	M	11	6	8	9	688
	F	11	7	9	9	550
Group A streptococcal pharyngitis	M	47	43	59	64	1,894
	F	43	41	29	49	1,677
Infectious gastroenteritis	M	315	366	443	662	13,644
	F	298	327	439	609	12,683
Chickenpox	M	64	84	97	73	2,922
	F	46	83	58	90	2,469
Hand, foot, and mouth disease	M	12	20	15	22	3,715
	F	13	14	11	20	3,086
Erythema infectiosum	M	19	16	16	30	618
	F	18	16	12	23	608
Exanthem subitum	M	32	31	23	41	1,697
	F	31	35	39	49	1,691
Pertussis	M		1			20
	F					13
Rubella	M	1		2	1	67
	F	2	1	1	2	64
Herpangina	M	8	5	7	5	2,639
	F	8	9	10	6	2,394
Measles	M					185
	F	3			1	178
Mumps	M	15	15	16	9	672
	F	5	10	15	8	488
Cold with exanthems by Enterovirus	M	3	4	3	2	274
	F	6	6	4	8	266
Mucocutaneous Lymphnode Syndrome	M					30
	F		1			30
Acute hemorrhagic conjunctivitis	M					8
	F		1			9
Epidemic keratoconjunctivitis	M	10	7	11	7	480
	F	6	5	7	7	324
Bacterial meningitis	M		2	1		8
	F					7
Aseptic meningitis	M	1				34
	F				1	27
Mycoplasma pneumonia	M		4	1	4	75
	F	4	2	3	6	85
Chlamydial pneumonia (excluding psittacosis)	M					3
	F					
Measles in adults	M		1			81
	F				1	62

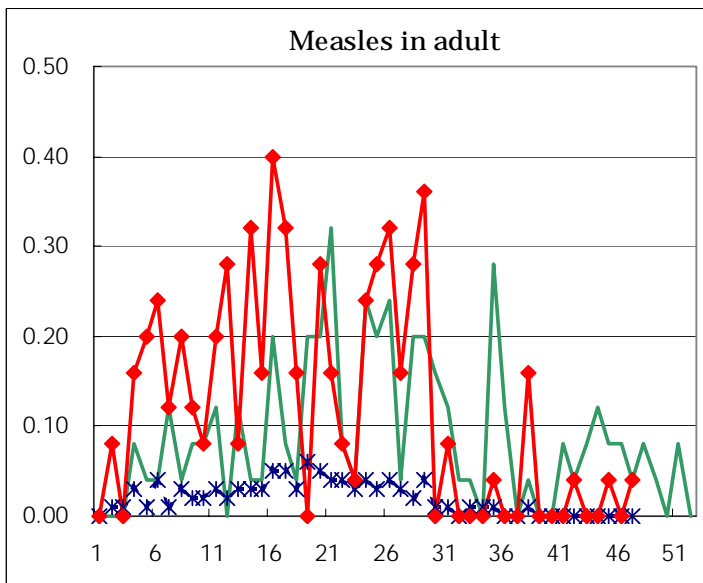
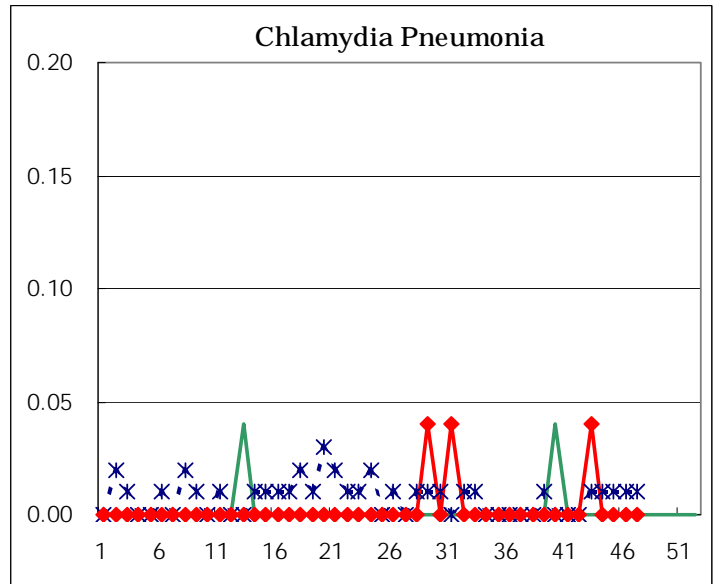
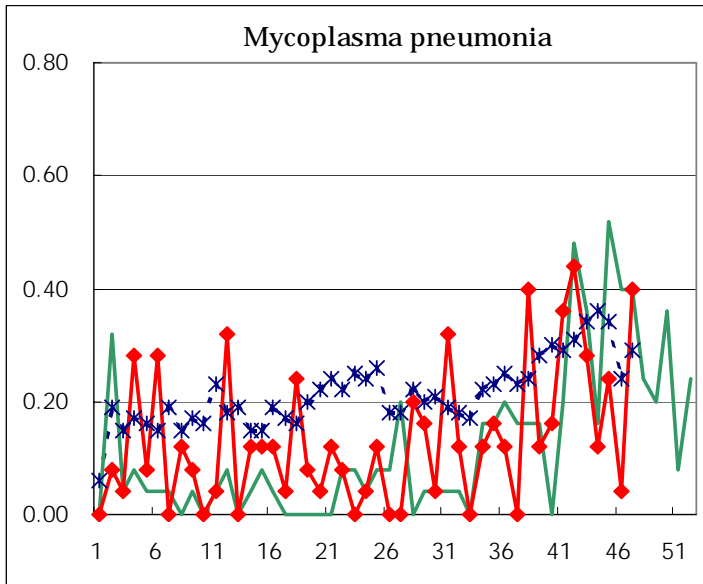
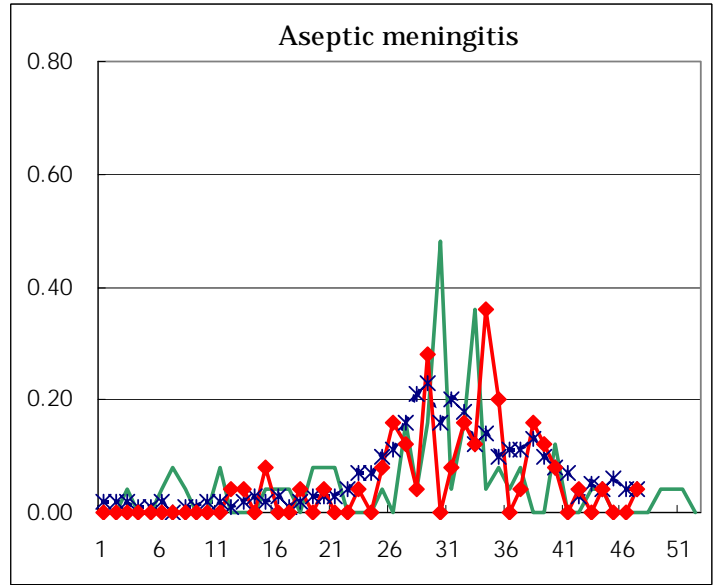
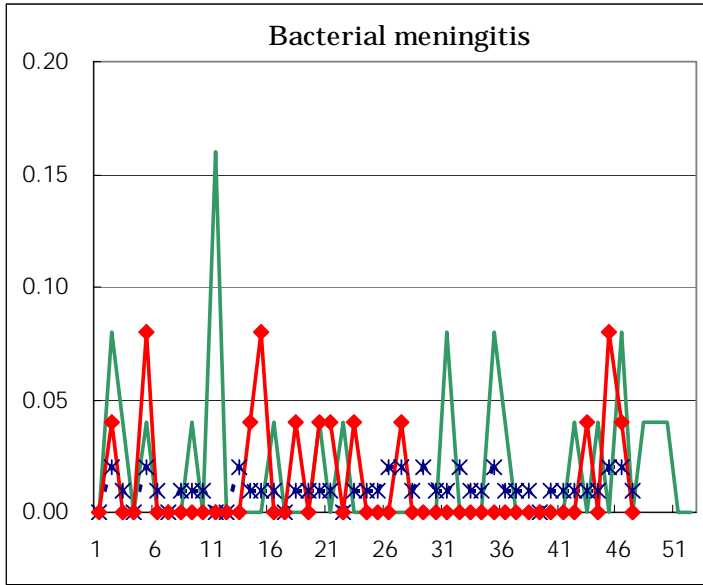
(Blank means 0.)

Disease Trend Graph (weekly reported cases per fixed-point in comparison)









Tokyo Metropolitan Government
Infectious Disease Surveillance Center