

INFECTIOUS DISEASES WEEKLY REPORT

# TOKYO IDWR

Tokyo Metropolitan Public Health Research Institute

9 December 2003 / Number 48

- Number of patients with the diseases required notifying all the cases
- Number of patients with the diseases to be reported by the designated clinics and hospitals
- Disease trend graph (weekly reported cases per fixed-point in comparison)

## Surveillance System in Tokyo, Japan

### The diseases which all physicians must report

All physicians must report to health centers the incidence of the diseases which are shown at page one. Health centers electronically report the individual case to Tokyo Metropolitan Infectious Disease Surveillance Center.

### Fixed-point surveillance

The numbers of patients who visit designated clinics or hospitals during a week are reported to health centers ( There are 37 in Tokyo). And they electronically report the numbers to Tokyo Metropolitan Infectious Disease Surveillance Center. We have about 200 fixed points (clinics and hospitals) in Tokyo.

1<sup>st</sup> Week is early January and 52<sup>nd</sup> Week is end of December.

Tokyo Metropolitan Infectious Disease Surveillance Center  
Tokyo Metropolitan Institute of Public Health

TEL:81-3-3363-3213 FAX:81-3-5332-7365  
e-mail: [idsc@tokyo-eiken.go.jp](mailto:idsc@tokyo-eiken.go.jp)  
URL: [idsc.tokyo-eiken.go.jp/](http://idsc.tokyo-eiken.go.jp/)

## Number of patients with the diseases which all physicians must report

Category	Diseases	Tokyo				Japan		
		45th	46th	47th	48th	Total	48th	Total
I	Ebola hemorrhagic fever							
	Crimean-Congo hemorrhagic fever							
	Severe acute respiratory syndrome							
	Smallpox							
	Plague							
	Marburg disease							
	Lassa fever							
II	Acute poliomyelitis							
	Cholera					4		22
	Shigellosis	2		1		96	3	433
	Diphtheria							
	Typhoid fever	1			1	19	2	58
	Paratyphoid fever			1		6		36
III	Enterohemorrhagic <i>Escherichia coli</i> infection	1	1	4	1	175	76	2473
IV	Hepatitis E							1
	West Nile fever							
	Hepatitis A	1			1	(2)		3
	Echinococcosis							17
	Yellow fever							
	Psittacosis					2		41
	Relapsing fever							
	Q fever					1		8
	Rabies							
	High pathogenic avian influenza							
	Coccidioidomycosis							1
	Monkeypox							
	Hemorrhagic fever with renal syndrome							
	Anthrax							
	Scrub typhus (Tsutsugamushi disease)				1	2	14	220
	Dengue fever		1			15		31
	Nipah virus infection							
	Japanese spotted fever							49
	Japanese encephalitis							1
	Hantavirus pulmonary syndrome							
	B virus disease							
	Brucellosis							
	Epidemic typhus							
Botulism								
Malaria				1	30	1	72	
Tularemia								
Lyme disease							5	
Lyssavirus infection								
Legionellosis					16		132	
Leptospirosis								

( Blank means 0. )

## Number of patients with the diseases which all physicians must report

Category	Diseases	Tokyo					Japan	
		45th	46th	47th	48th	Total	48th	Total
V	Amebiasis	2	3	2	3	111	6	460
	Acute viral hepatitis(excluding Hepatitis A,Hepatitis E)		2	2		(66)	2	609
	Acute encephalitis						1	1
	Cryptosporidiosis					6		8
	Creutzfeldt-Jakob Disease	1		1		13	1	104
	Sever invasive streptococcal infections				1	6		50
	Acquired immunodeficiency syndrome	4	9	11	2	329	9	844
	Giardiasis					28	1	94
	Meningococcal meningitis					4		17
	Congenital rubella syndrome							1
	Syphilis	1	1	1	2	61	3	428
	Tetanus					3		65
	Vancomycin-resistant <i>Staphylococcus aureus</i> infection							
	Vancomycin-resistant <i>enterococcus</i> infection					3	1	57

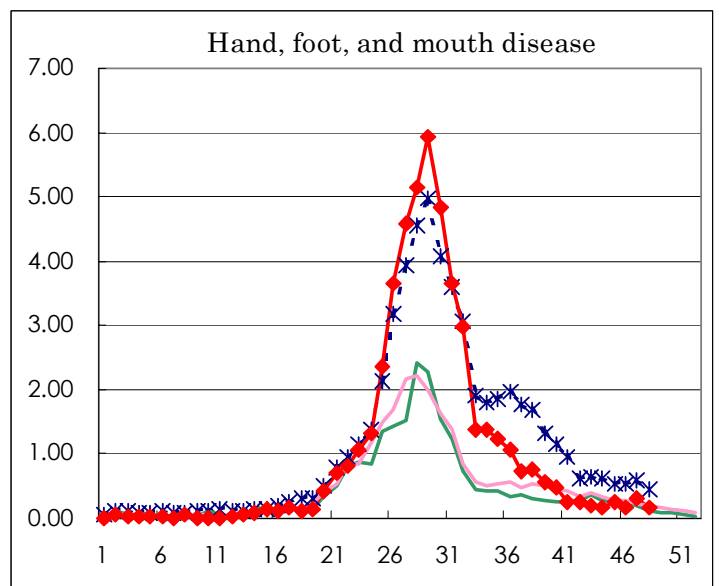
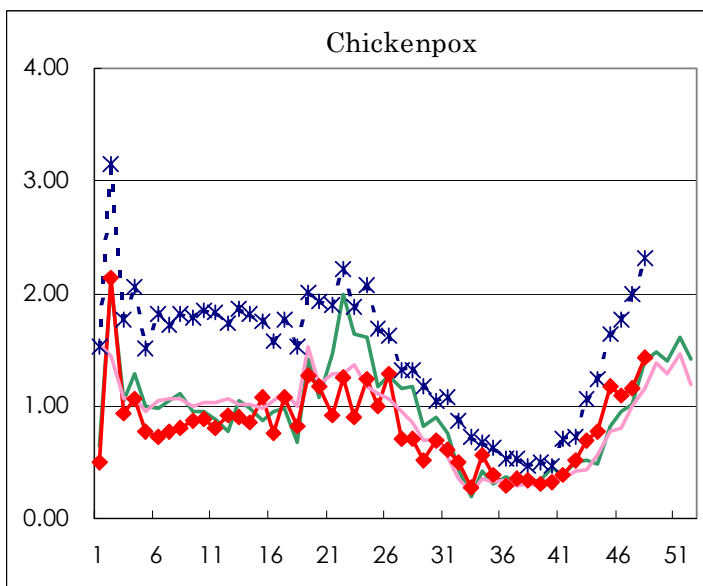
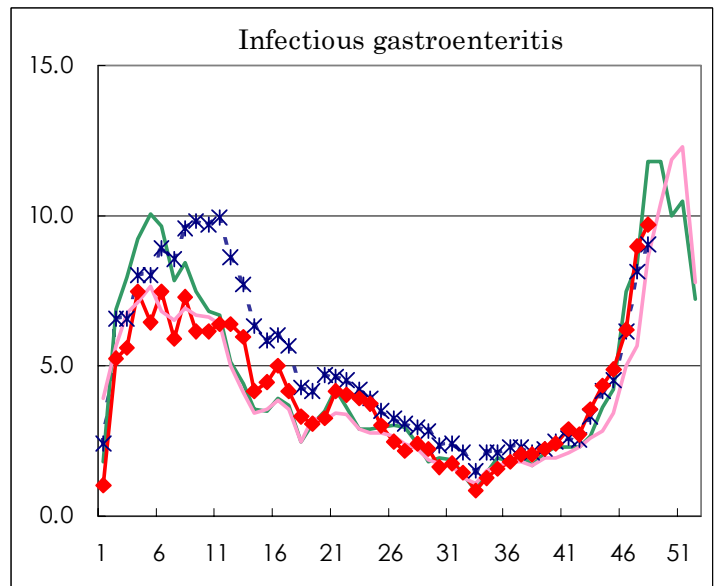
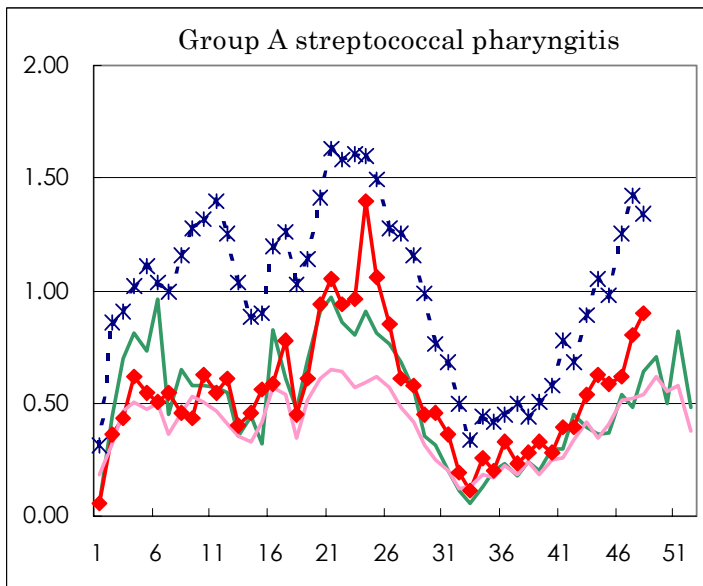
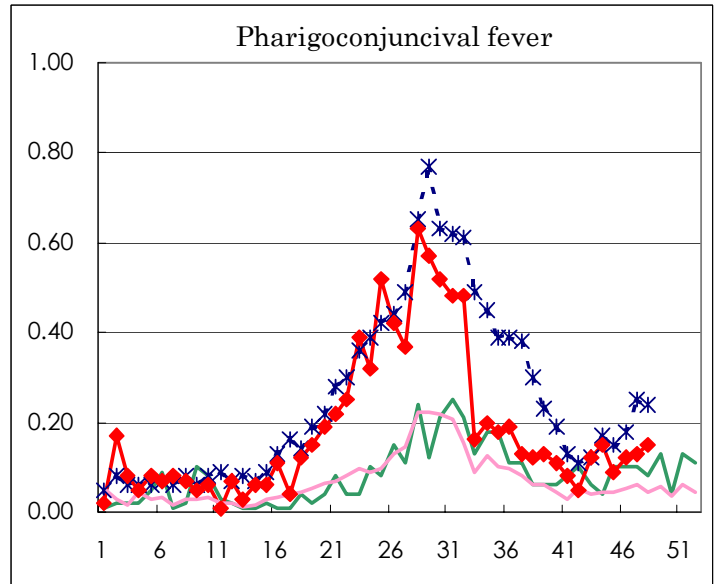
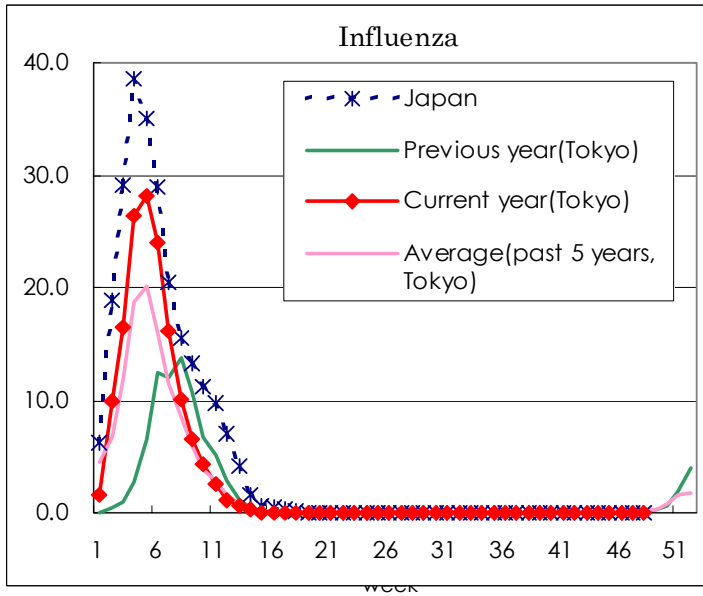
( Blank means 0. )

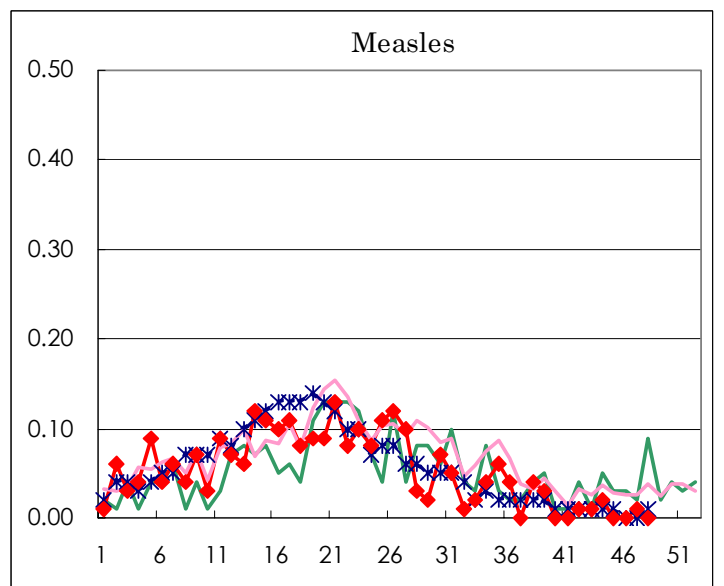
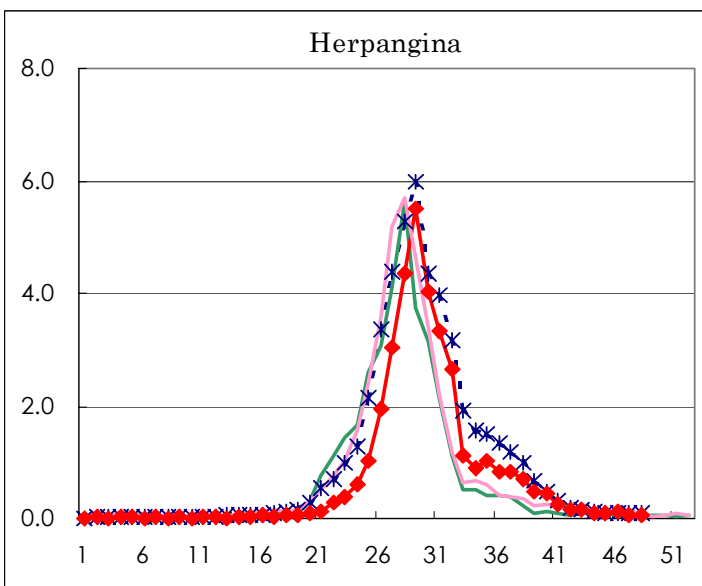
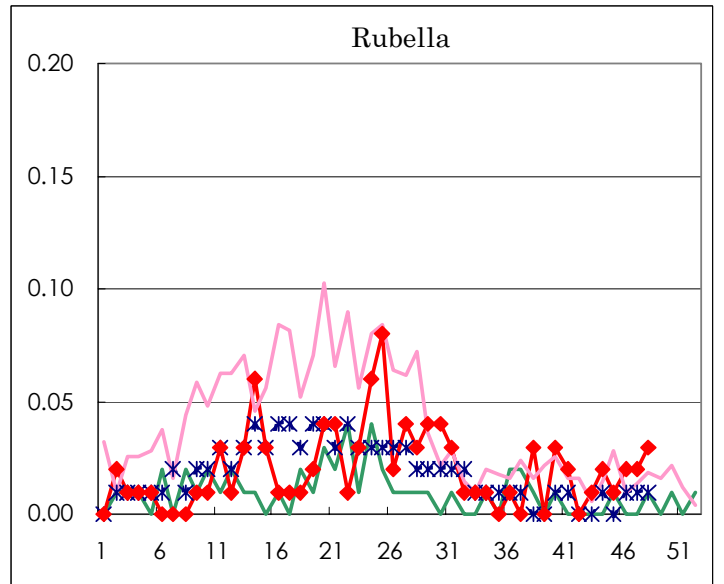
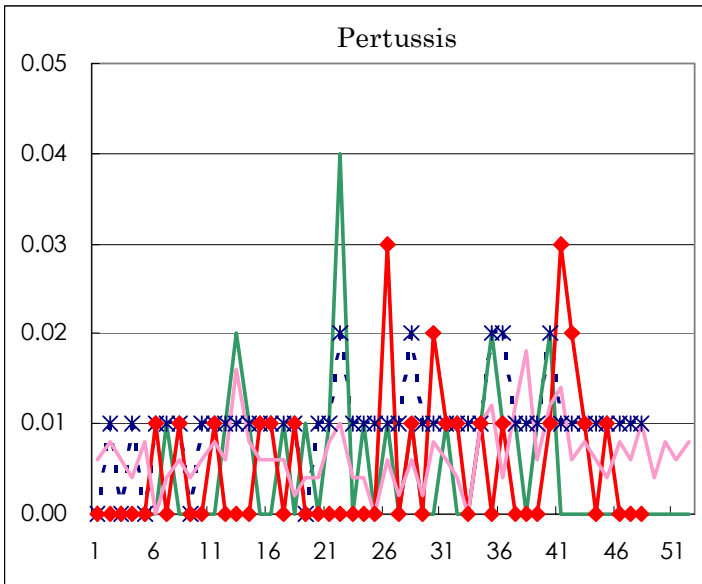
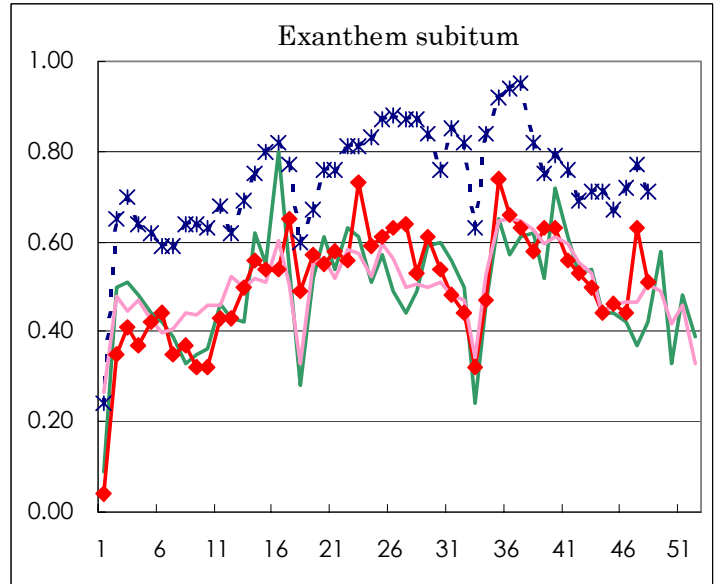
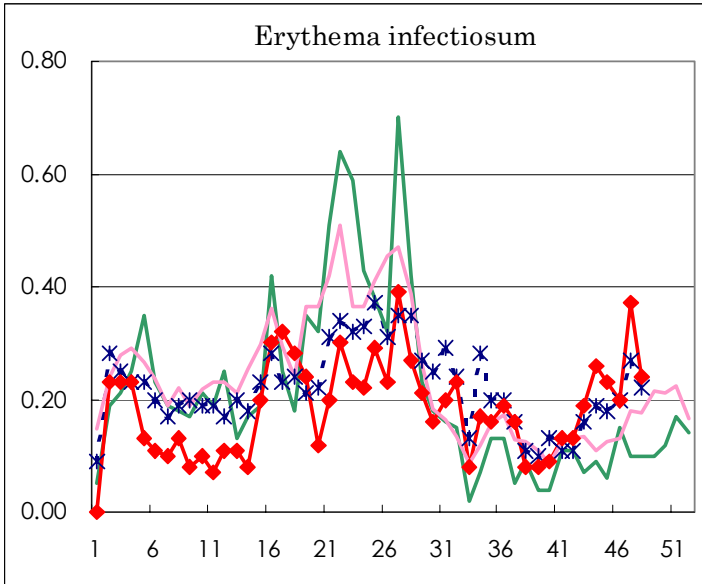
**Number of patients with the diseases to be reported  
by the designated clinics and hospitals**

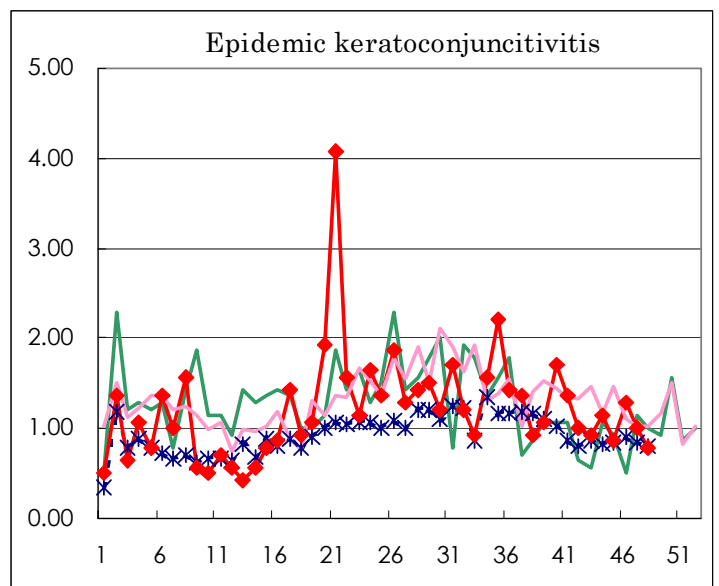
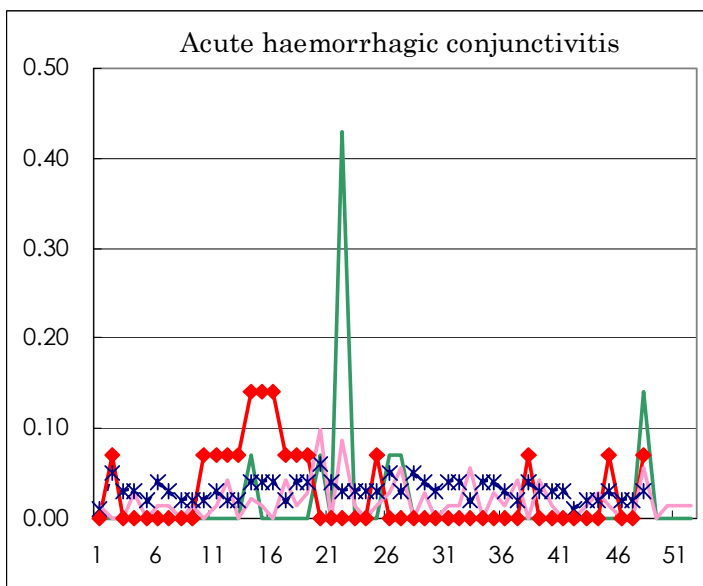
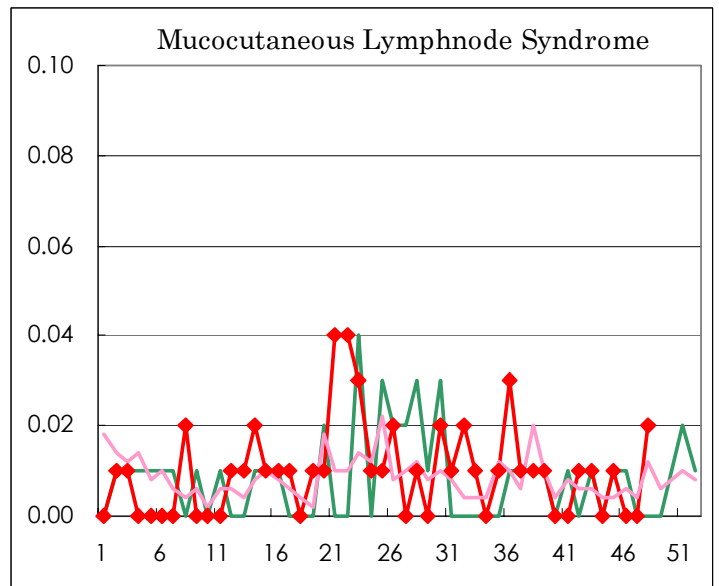
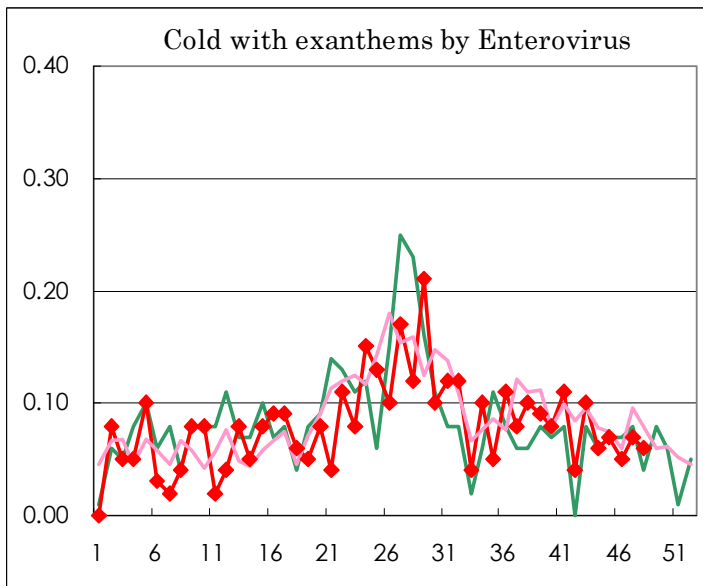
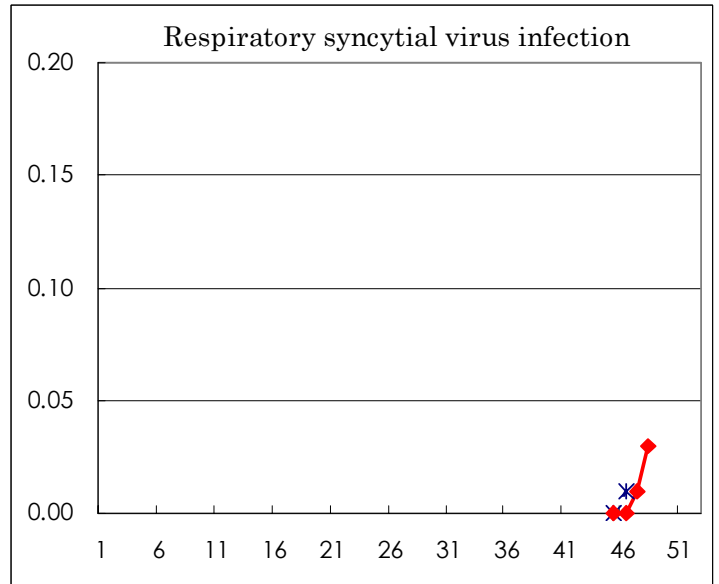
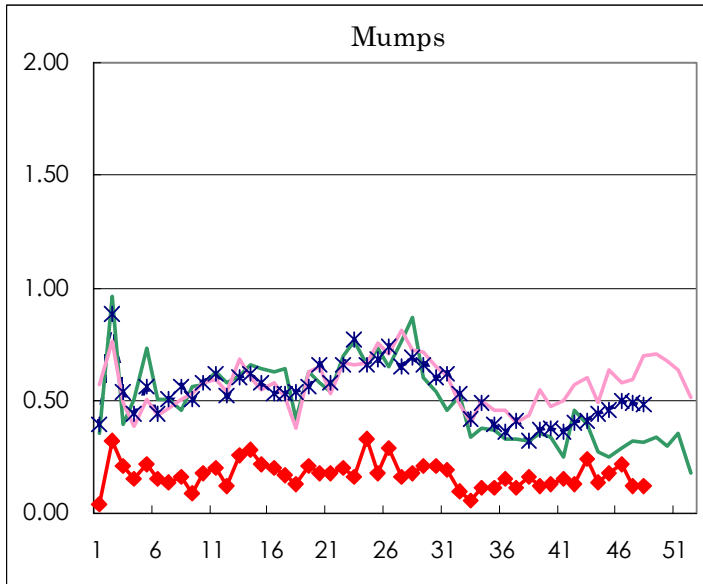
Diseases	Sex	Week(2003)				Total
		45th	46th	47th	48th	
Respiratory syncytial virus infection	M			1	2	3
	F			1	2	3
Influenza	M		1	6	5	13,412
	F	1		6	2	13,089
Pharygoconjunctival fever	M	6	8	9	11	699
	F	7	9	9	11	561
Group A streptococcal pharyngitis	M	43	59	65	76	1,971
	F	41	29	49	52	1,729
Infectious gastroenteritis	M	366	443	666	734	14,382
	F	327	439	612	646	13,332
Chickenpox	M	84	97	73	109	3,031
	F	83	58	90	94	2,563
Hand, foot, and mouth disease	M	20	15	22	15	3,730
	F	14	11	20	9	3,095
Erythema infectiosum	M	16	16	30	23	641
	F	16	12	23	11	619
Exanthem subitum	M	31	23	41	37	1,734
	F	35	39	49	36	1,727
Pertussis	M	1				20
	F					13
Rubella	M		2	1	4	71
	F	1	1	2		64
Herpangina	M	5	7	5	4	2,643
	F	9	10	6	6	2,400
Measles	M					185
	F			1		178
Mumps	M	15	16	9	12	684
	F	10	15	8	5	493
Cold with exanthems by Enterovirus	M	4	3	2	4	278
	F	6	4	8	5	271
Mucocutaneous Lymphnode Syndrome	M				2	32
	F	1			1	31
Acute hemorrhagic conjunctivitis	M				1	9
	F	1				9
Epidemic keratoconjunctivitis	M	7	11	7	5	485
	F	5	7	7	6	330
Bacterial meningitis	M	2	1			8
	F					7
Aseptic meningitis	M				1	35
	F			1		27
Mycoplasma pneumonia	M	4	1	4	1	77
	F	2	3	6	1	86
Chlamydial pneumonia (excluding psittacosis)	M					3
	F					
Measles in adults	M	1				81
	F			1		62

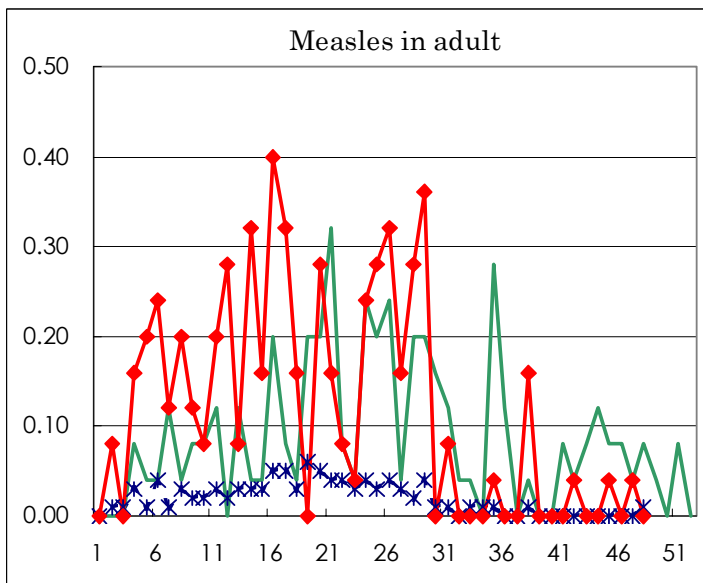
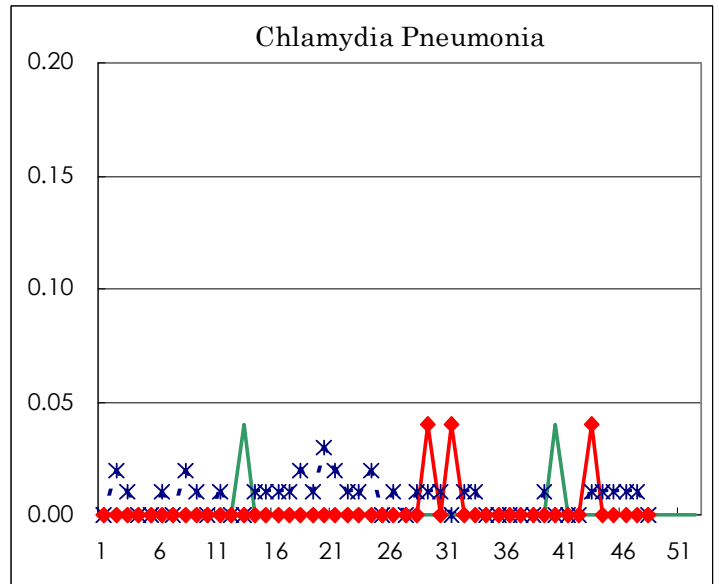
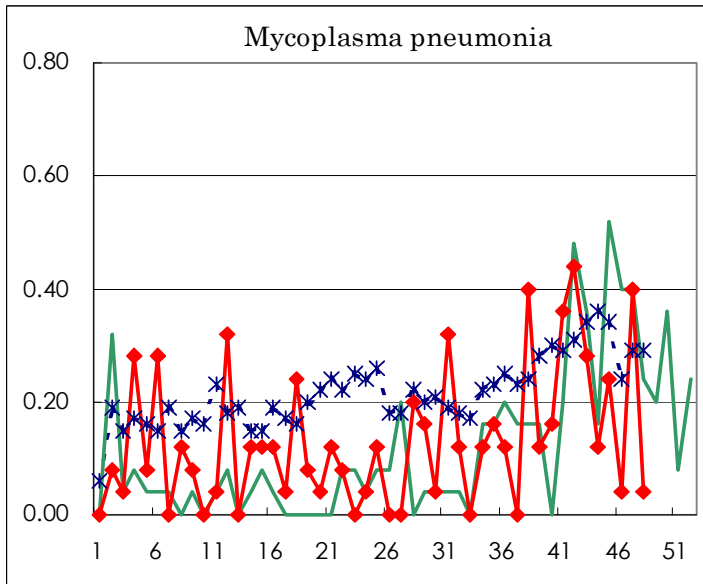
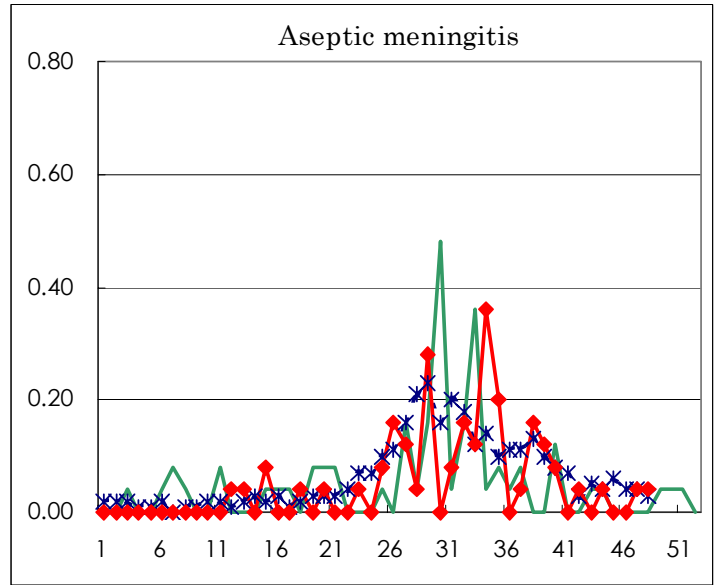
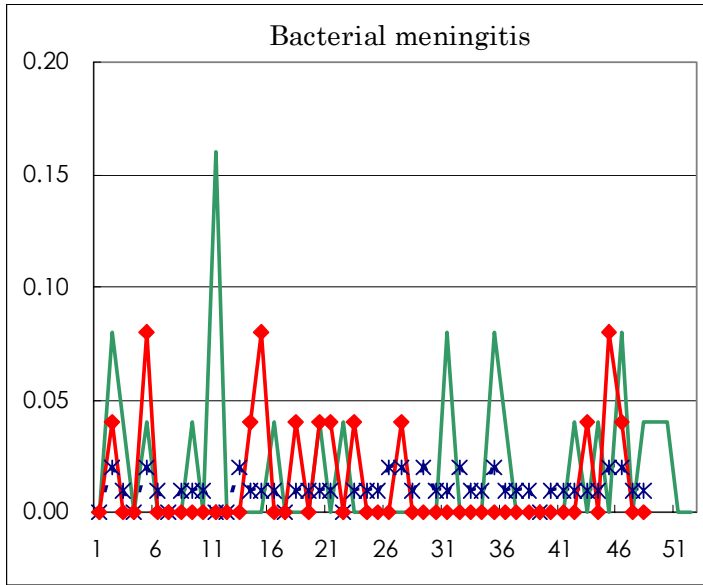
( Blank means 0. )

# Disease Trend Graph (weekly reported cases per fixed-point in comparison)









Tokyo Metropolitan Government  
**Infectious Disease Surveillance Center**