

INFECTIOUS DISEASES WEEKLY REPORT

# TOKYO IDWR

Tokyo Metropolitan Public Health Research Institute

5 January 2004 / Number 51

- Number of patients with the diseases required notifying all the cases
- Number of patients with the diseases to be reported by the designated clinics and hospitals
- Disease trend graph (weekly reported cases per fixed-point in comparison)

## Surveillance System in Tokyo, Japan

### The diseases which all physicians must report

All physicians must report to health centers the incidence of the diseases which are shown at page one. Health centers electronically report the individual case to Tokyo Metropolitan Infectious Disease Surveillance Center.

### Fixed-point surveillance

The numbers of patients who visit designated clinics or hospitals during a week are reported to health centers ( There are 37 in Tokyo). And they electronically report the numbers to Tokyo Metropolitan Infectious Disease Surveillance Center. We have about 200 fixed points (clinics and hospitals) in Tokyo.

1<sup>st</sup> Week is early January and 52<sup>nd</sup> Week is end of December.

Tokyo Metropolitan Infectious Disease Surveillance Center  
Tokyo Metropolitan Institute of Public Health

TEL:81-3-3363-3213 FAX:81-3-5332-7365

e-mail: [idsc@tokyo-eiken.go.jp](mailto:idsc@tokyo-eiken.go.jp)

URL: [idsc.tokyo-eiken.go.jp/](http://idsc.tokyo-eiken.go.jp/)

## Number of patients with the diseases which all physicians must report

Category	Diseases	Tokyo				Japan		
		48th	49th	50th	51st	Total	51st	Total
I	Ebola hemorrhagic fever							
	Crimean-Congo hemorrhagic fever							
	Severe acute respiratory syndrome							
	Smallpox							
	Plague							
	Marburg disease							
	Lassa fever							
II	Acute poliomyelitis							
	Cholera		1			5	1	24
	Shigellosis		3		3	102	3	448
	Diphtheria							
	Typhoid fever	1		1		21		60
	Paratyphoid fever			1		7		38
III	Enterohemorrhagic <i>Escherichia coli</i> infection	1	2		2	179	73	2606
IV	Hepatitis E							1
	West Nile fever							
	Hepatitis A	1			1	(3)	2	9
	Echinococcosis							17
	Yellow fever							
	Psittacosis					2		42
	Relapsing fever							
	Q fever					1		9
	Rabies							
	High pathogenic avian influenza							
	Coccidioidomycosis							1
	Monkeypox							
	Hemorrhagic fever with renal syndrome							
	Anthrax							
	Scrub typhus (Tsutsugamushi disease)	1	1			3	25	333
	Dengue fever					15		31
	Nipah virus infection							
	Japanese spotted fever						1	51
	Japanese encephalitis							1
	Hantavirus pulmonary syndrome							
	B virus disease							
	Brucellosis							
Epidemic typhus								
Botulism								
Malaria	1		1	2	33	4	77	
Tularemia								
Lyme disease							5	
Lyssavirus infection								
Legionellosis					16		140	
Leptospirosis								

( Blank means 0. )

## Number of patients with the diseases which all physicians must report

Category	Diseases	Tokyo					Japan	
		48th	49th	50th	51st	Total	51st	Total
V	Amebiasis	3	1	1	5	118	7	494
	Acute viral hepatitis(excluding Hepatitis A,Hepatitis E)		1			67	2	629
	Acute encephalitis				1	1	(1)	(6)
	Cryptosporidiosis					6		8
	Creutzfeldt-Jakob Disease		1			13	1	109
	Sever invasive streptococcal infections	1				6		51
	Acquired immunodeficiency syndrome	2	7	5	9	350	15	918
	Giardiasis		1			29		99
	Meningococcal meningitis					4		17
	Congenital rubella syndrome							1
	Syphilis	2	1	1	1	64	9	480
	Tetanus					3		68
	Vancomycin-resistant <i>Staphylococcus aureus</i> infection							
	Vancomycin-resistant <i>enterococcus</i> infection		1			4		59

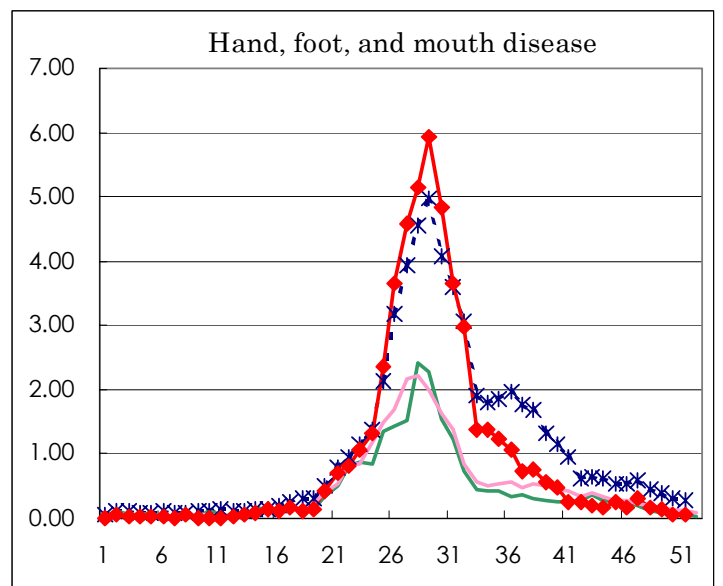
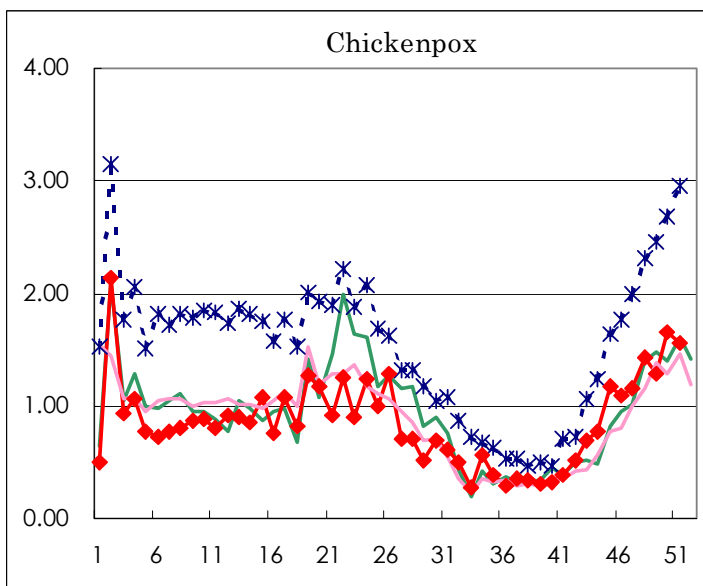
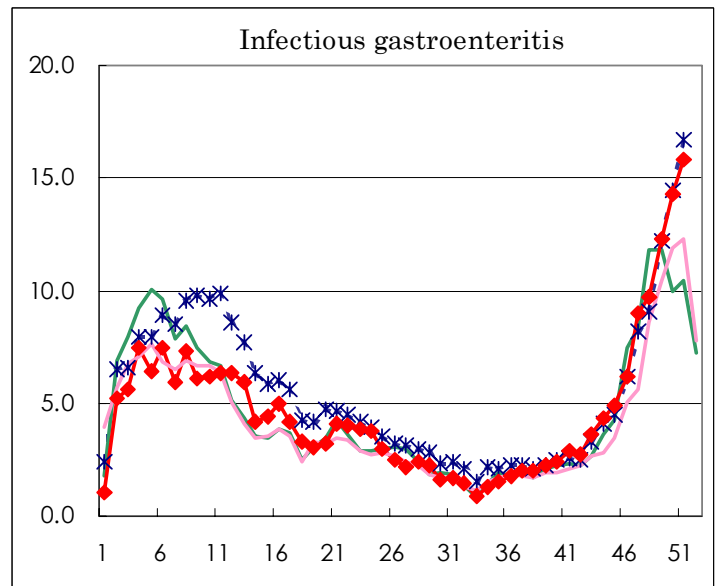
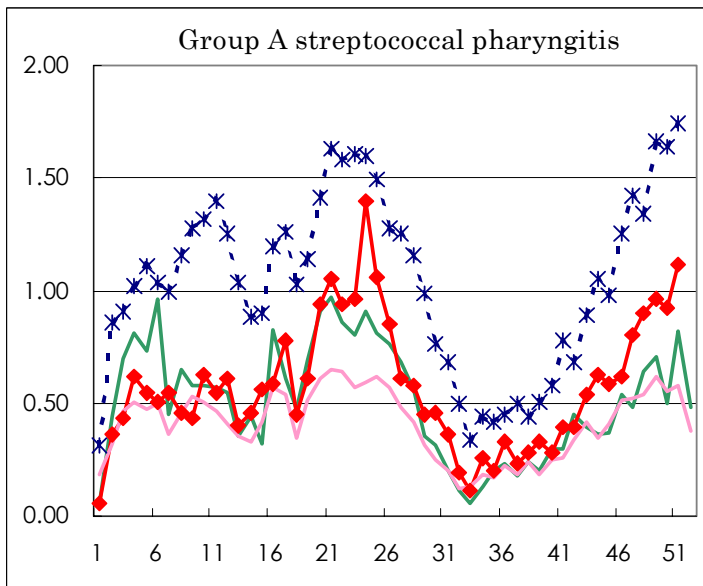
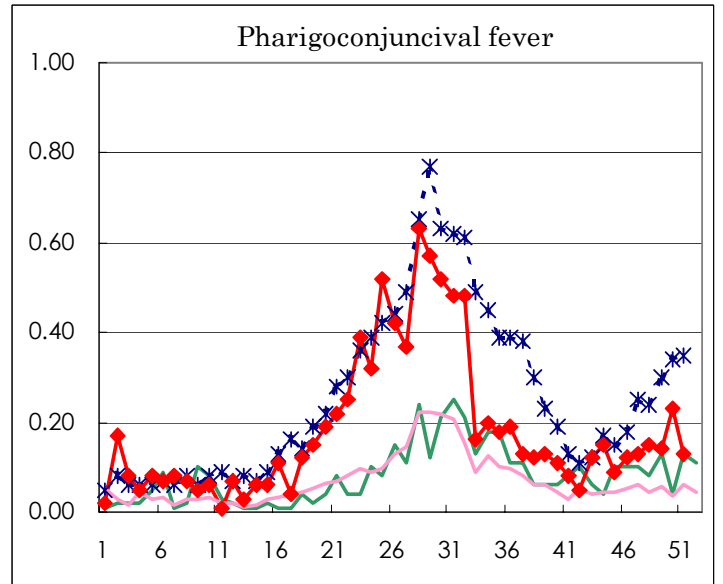
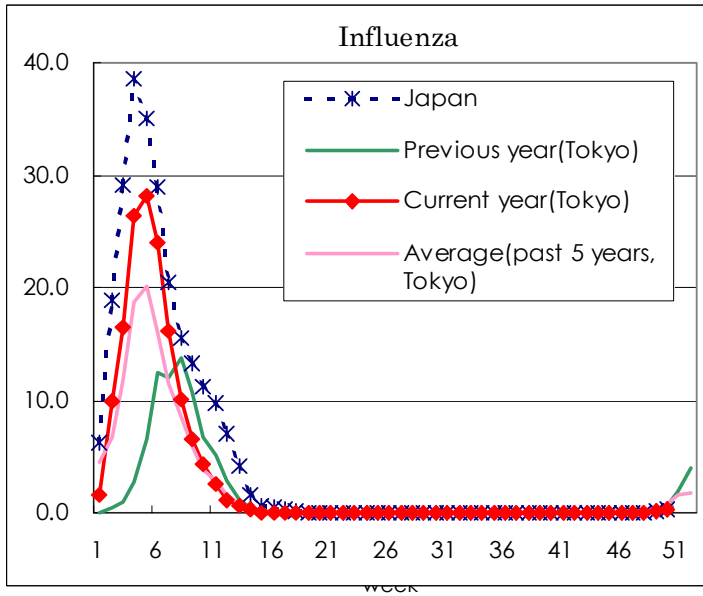
( Blank means 0. )

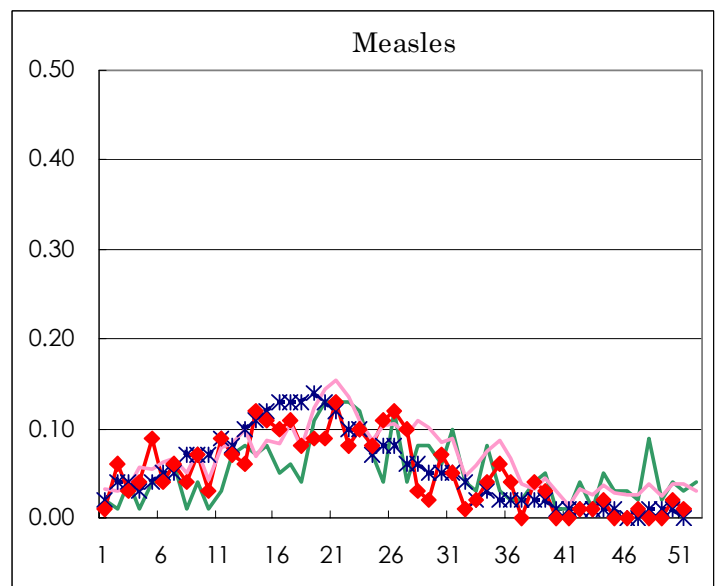
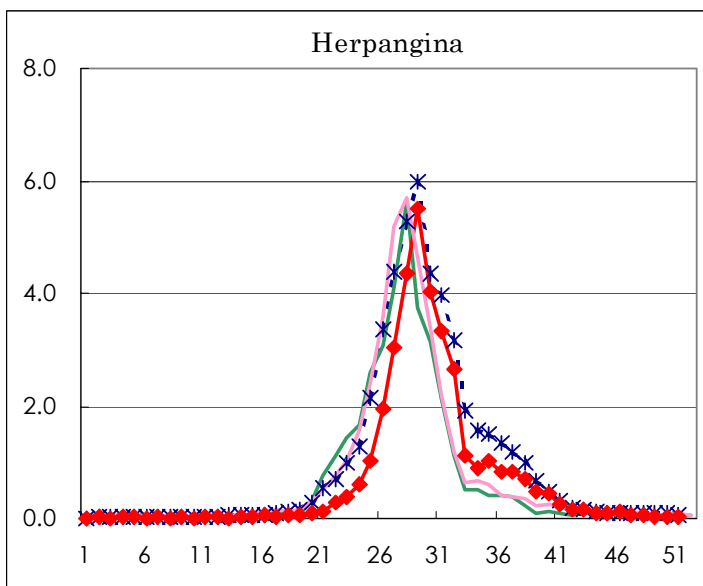
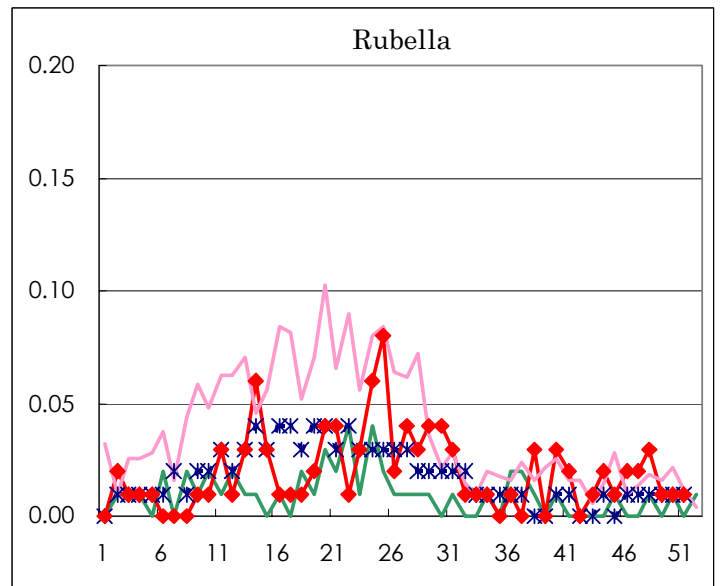
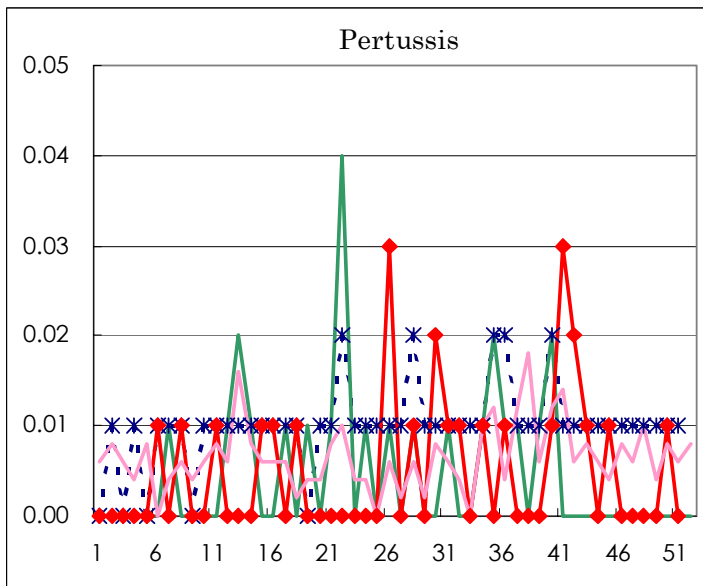
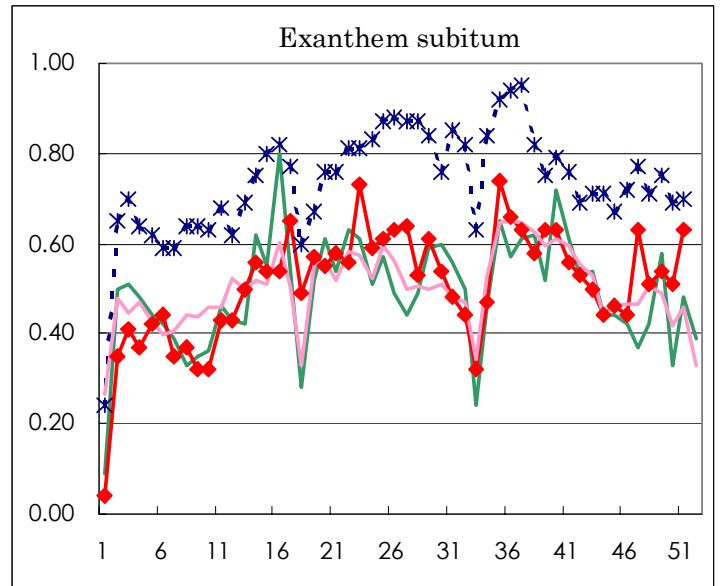
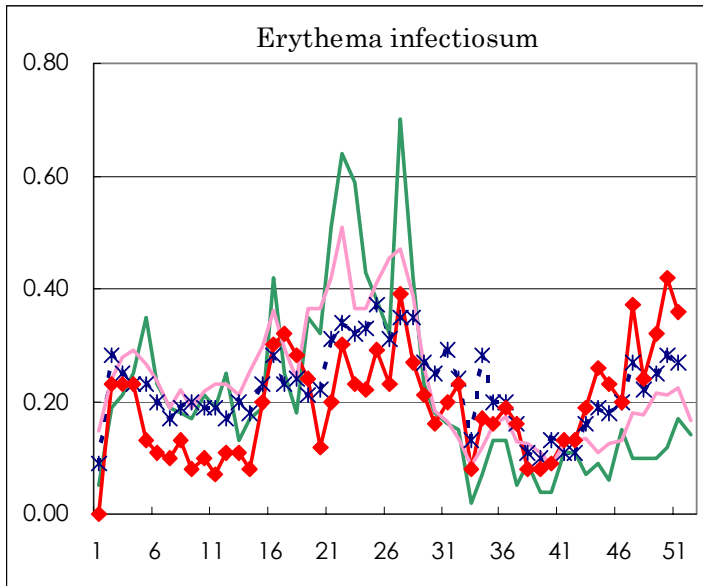
Number of patients with the diseases to be reported  
by the designated clinics and hospitals

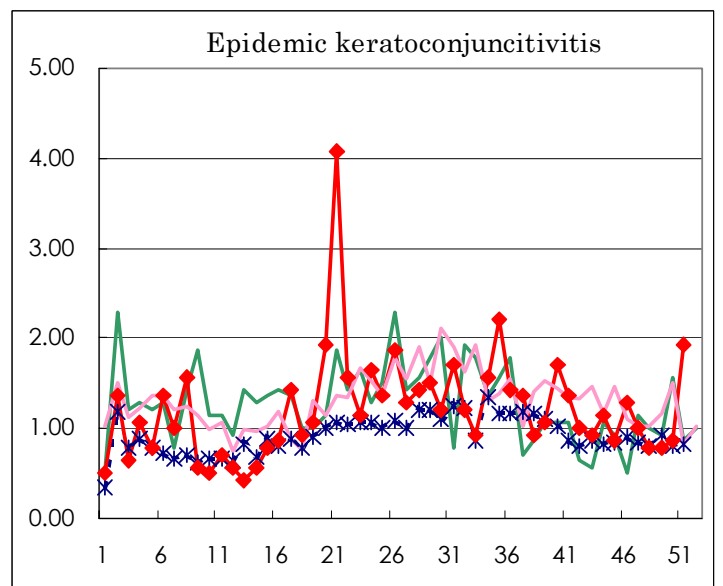
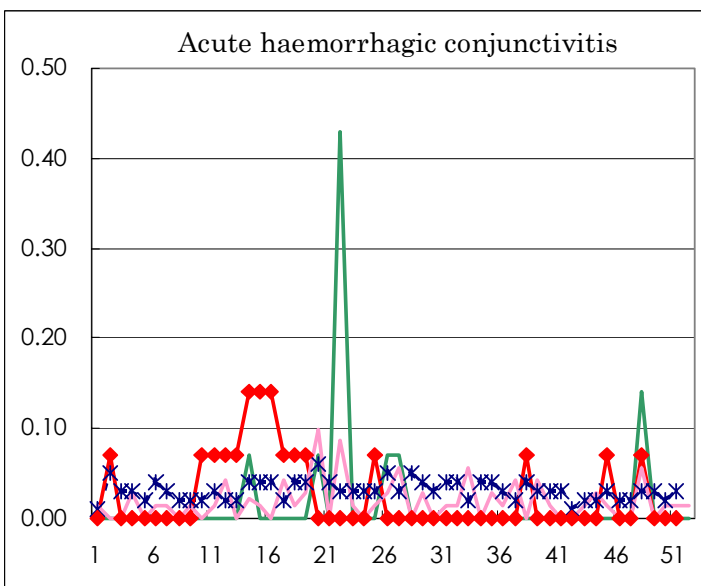
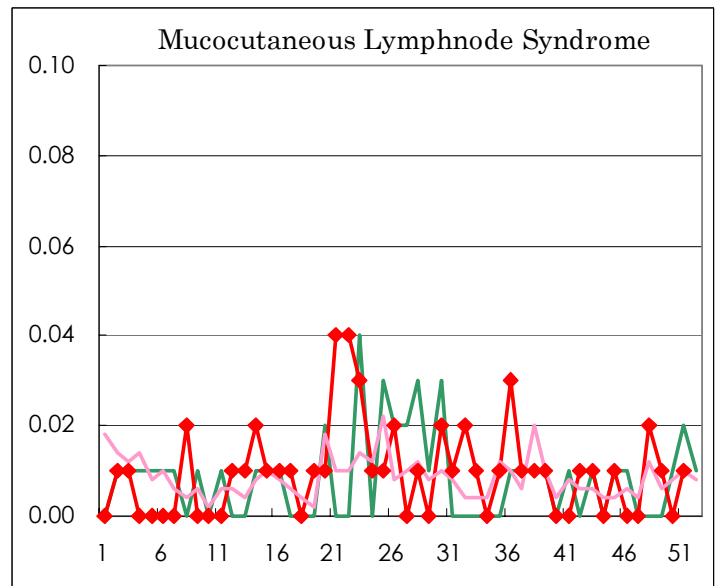
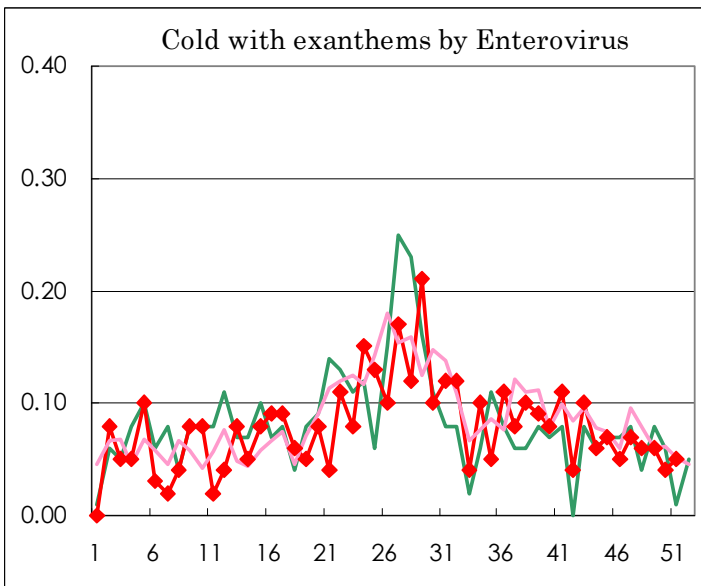
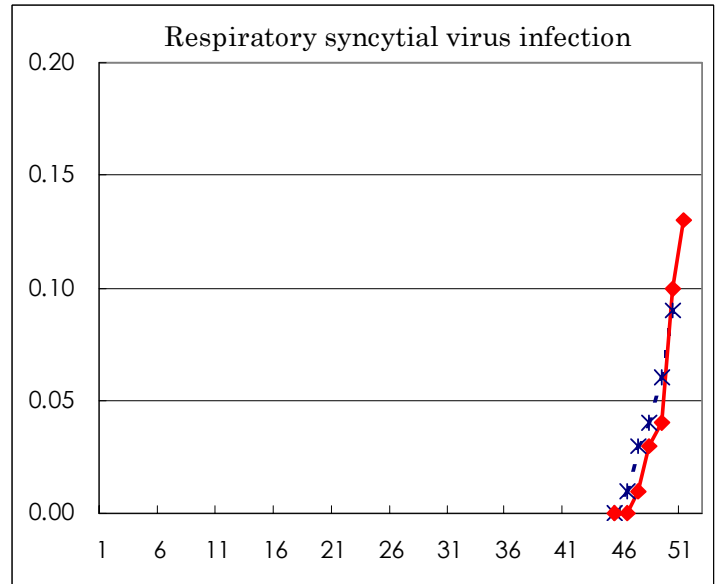
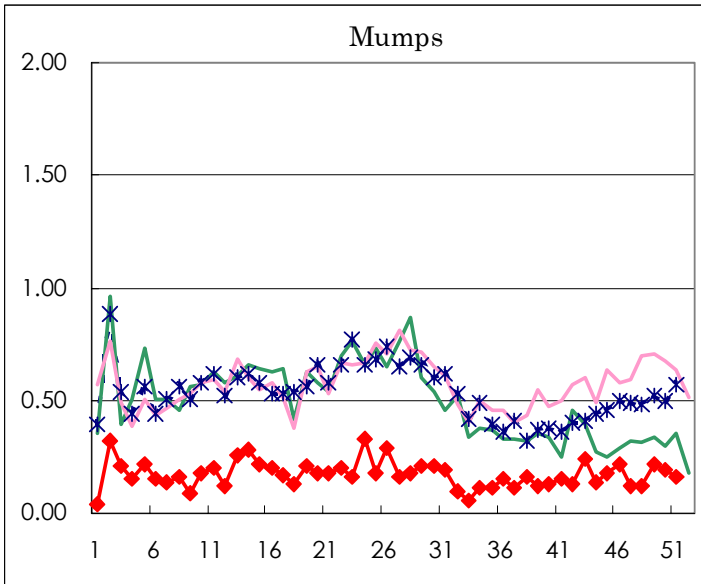
Diseases	Sex	Week(2003)				Total
		48th	49th	50th	51st	
Respiratory syncytial virus infection	M	2	7	4	10	24
	F	2	3	10	8	24
Influenza	M	5	13	28	57	13,510
	F	2	11	28	70	13,198
Pharygoconjunctival fever	M	11	14	20	12	745
	F	11	6	12	6	585
Group A streptococcal pharyngitis	M	76	77	68	70	2,186
	F	52	60	63	89	1,941
Infectious gastroenteritis	M	734	864	1023	1154	17,423
	F	646	881	1012	1090	16,315
Chickenpox	M	109	95	105	117	3,348
	F	94	87	130	105	2,885
Hand, foot, and mouth disease	M	15	13	7	5	3,755
	F	9	5	3	4	3,107
Erythema infectiosum	M	23	30	27	26	724
	F	11	16	32	25	692
Exanthem subitum	M	37	37	35	44	1,850
	F	36	40	38	45	1,850
Pertussis	M			1		21
	F					13
Rubella	M	4				71
	F		1	1	1	67
Herpangina	M	4	2	3	3	2,651
	F	6	2	2	2	2,406
Measles	M				2	187
	F			3		181
Mumps	M	12	17	15	16	732
	F	5	14	12	7	526
Cold with exanthems by Enterovirus	M	4	6	2	5	291
	F	5	2	3	2	278
Mucocutaneous Lymphnode Syndrome	M	2	1		1	34
	F	1			1	32
Acute hemorrhagic conjunctivitis	M	1				9
	F					9
Epidemic keratoconjunctivitis	M	5	6	6	14	511
	F	6	5	6	13	354
Bacterial meningitis	M			1	1	10
	F		1			8
Aseptic meningitis	M	1	1			36
	F				1	28
Mycoplasma pneumonia	M	1	1	1	3	82
	F	1			1	87
Chlamydial pneumonia (excluding psittacosis)	M					3
	F					
Measles in adults	M		1			82
	F					62

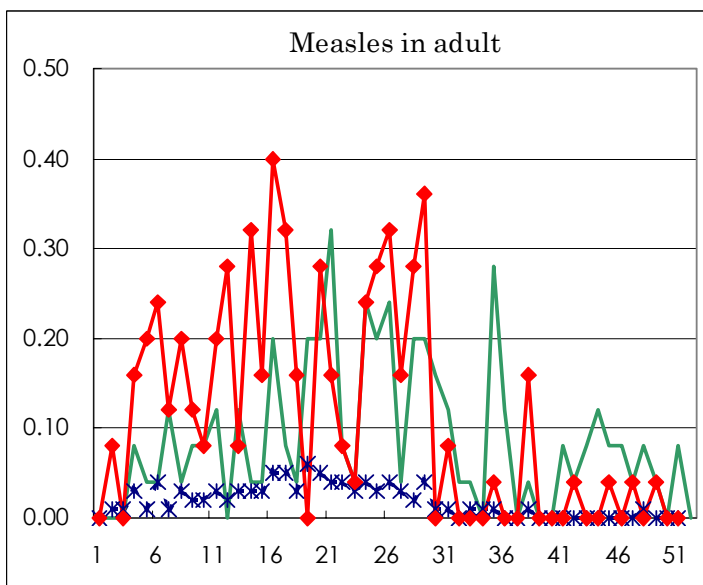
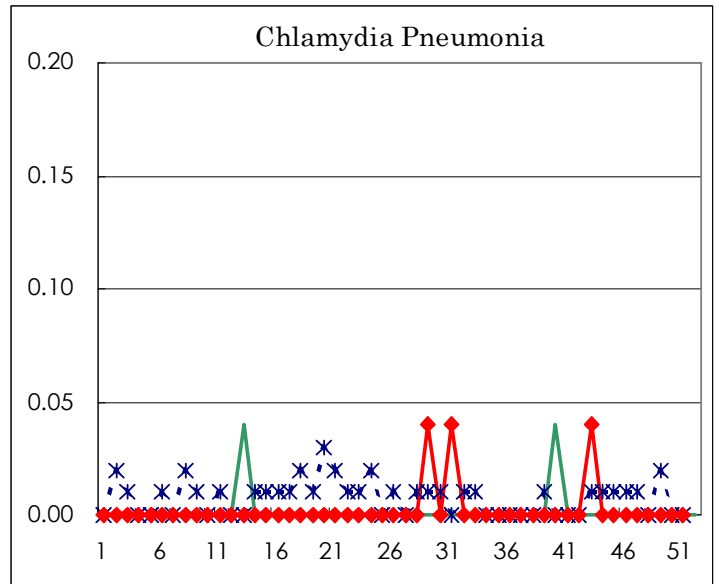
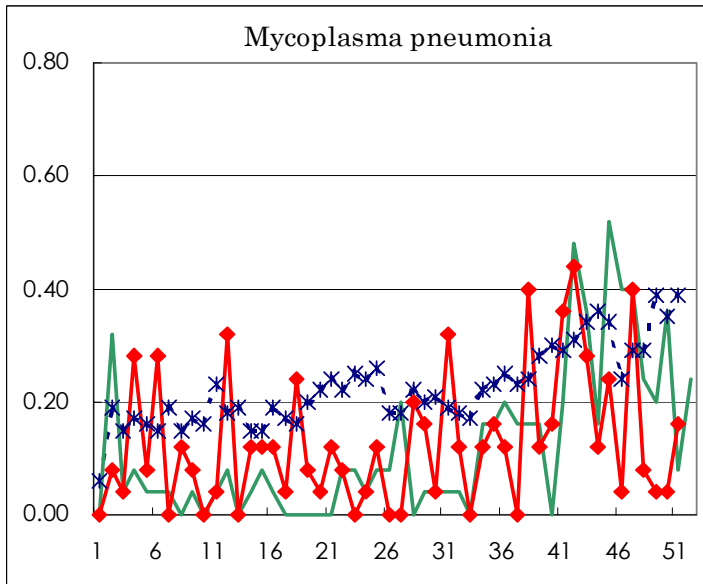
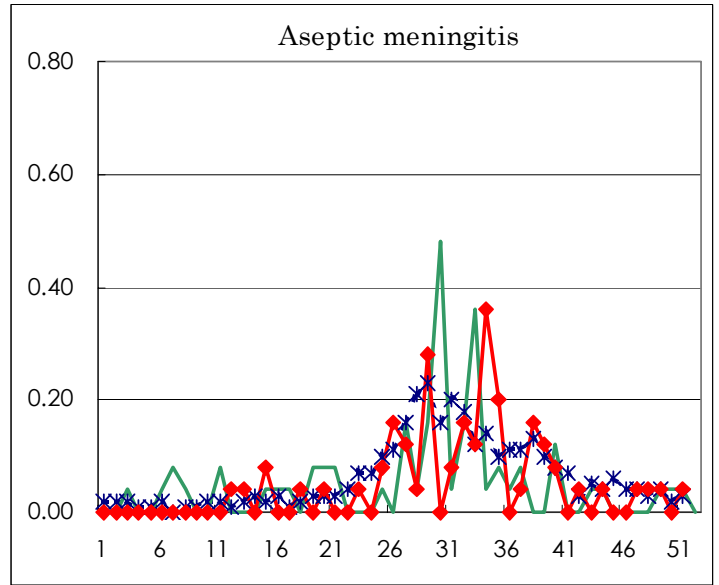
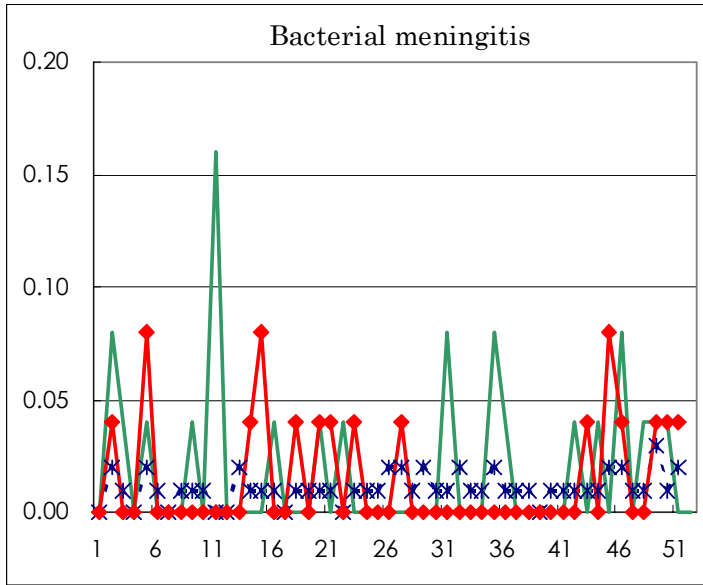
( Blank means 0. )

# Disease Trend Graph (weekly reported cases per fixed-point in comparison)









Tokyo Metropolitan Government  
Infectious Disease Surveillance Center