

INFECTIOUS DISEASES WEEKLY REPORT

# TOKYO IDWR

Tokyo Metropolitan Institute of Public Health

2 March 2004 / Number 8

- Number of patients with the diseases required notifying all the cases
- Number of patients with the diseases to be reported by the designated clinics and hospitals
- Disease trend graph (weekly reported cases per fixed-point in comparison)

## Surveillance System in Tokyo, Japan

### The diseases which all physicians must report

All physicians must report to health centers the incidence of the diseases which are shown at page one. Health centers electronically report the individual case to Tokyo Metropolitan Infectious Disease Surveillance Center.

### Fixed-point surveillance

The numbers of patients who visit designated clinics or hospitals during a week are reported to health centers ( There are 37 in Tokyo). And they electronically report the numbers to Tokyo Metropolitan Infectious Disease Surveillance Center. We have about 200 fixed points (clinics and hospitals) in Tokyo.

1<sup>st</sup> Week is early January and 52<sup>nd</sup> Week is end of December.

Tokyo Metropolitan Infectious Disease Surveillance Center  
Tokyo Metropolitan Institute of Public Health

TEL:81-3-3363-3213 FAX:81-3-5332-7365

e-mail: [idsc@tokyo-eiken.go.jp](mailto:idsc@tokyo-eiken.go.jp)

URL: [idsc.tokyo-eiken.go.jp/](http://idsc.tokyo-eiken.go.jp/)

## Number of patients with the diseases which all physicians must report

| Category   | Diseases  | Tokyo |     |     |     | Total | Japan |       |
|--|---|-------|-----|-----|-----|-------|-------|-------|
|  |   | 5th   | 6th | 7th | 8th |       | 8th   | Total |
| I  | Ebola hemorrhagic fever                                     |       |     |     |     |       |       |       |
|  | Crimean-Congo hemorrhagic fever                             |       |     |     |     |       |       |       |
|  | Severe acute respiratory syndrome                           |       |     |     |     |       |       |       |
|  | Smallpox  |       |     |     |     |       |       |       |
|  | Plague  |       |     |     |     |       |       |       |
|  | Marburg disease   |       |     |     |     |       |       |       |
|  | Lassa fever   |       |     |     |     |       |       |       |
| II   | Acute poliomyelitis   |       |     |     |     |       |       |       |
|  | Cholera   |       |     |     |     |       |       | 4     |
|  | Shigellosis   |       | 1   | 1   | 2   | 12    | 7     | 44    |
|  | Diphtheria  |       |     |     |     |       |       | 1     |
|  | Typhoid fever   |       |     | 1   |     | 1     | 1     | 3     |
| III  | Enterohemorrhagic <i>Escherichia coli</i> infection         |       | 2   | 3   | 3   | 12    | 3     | 48    |
| IV   | Hepatitis E   |       |     |     |     |       |       | (2)   |
|  | West Nile fever   |       |     |     |     |       |       |       |
|  | Hepatitis A   | 1     | 1   | 1   | 2   | 6     | (2)   | (18)  |
|  | Echinococcosis  |       |     |     |     |       |       | 7     |
|  | Yellow fever  |       |     |     |     |       |       |       |
|  | Psittacosis   |       |     |     |     |       |       | 4     |
|  | Relapsing fever   |       |     |     |     |       |       |       |
|  | Q fever   |       |     |     |     |       |       |       |
|  | Rabies  |       |     |     |     |       |       |       |
|  | High pathogenic avian influenza                             |       |     |     |     |       |       |       |
|  | Coccidioidomycosis  |       |     |     |     |       | 1     | 1     |
|  | Monkeypox   |       |     |     |     |       |       |       |
|  | Hemorrhagic fever with renal syndrome                       |       |     |     |     |       |       |       |
|  | Anthrax   |       |     |     |     |       |       |       |
|  | Scrub typhus (Tsumugamushi disease)                         |       | 1   |     | 2   | 5     | 3     | 43    |
|  | Dengue fever  |       |     |     |     | 1     |       | 1     |
|  | Nipah virus infection                                       |       |     |     |     |       |       |       |
|  | Japanese spotted fever                                      |       |     |     |     |       |       |       |
|  | Japanese encephalitis                                       |       |     |     |     |       |       |       |
|  | Hantavirus pulmonary syndrome                               |       |     |     |     |       |       |       |
| B virus disease                                    |   |       |     |     |     |       |       |       |
| Brucellosis  |   |       |     |     |     |       |       |       |
| Epidemic typhus                                    |   |       |     |     |     |       |       |       |
| Botulism   |   |       |     |     |     |       |       |       |
| Malaria  |   | 2     |     |     | 3   |       | 5     |       |
| Tularemia  |   |       |     |     |     |       |       |       |
| Lyme disease                                       |   |       |     |     |     |       |       |       |
| Lyssavirus infection                               |   |       |     |     |     |       |       |       |
| Legionellosis                                      |   |       | 1   |     | 2   | 2     | 15    |       |
| Leptospirosis                                      |   |       |     |     |     |       |       |       |
| V  | Amebiasis   | 2     | 2   | 2   | 1   | 20    | 4     | 63    |
|  | Acute viral hepatitis(excluding Hepatitis A,Hepatitis E)    | 2     |     |     |     | 4     | 3     | 34    |
|  | Acute encephalitis  |       |     |     | 1   | 1     |       | 1     |
|  | Cryptosporidiosis   |       |     |     |     | 1     |       | 1     |
|  | Creutzfeldt-Jakob Disease                                   |       |     |     | 2   | 2     | 1     | 24    |
|  | Sever invasive streptococcal infections                     |       |     |     | 1   | 2     |       | 5     |
|  | Acquired immunodeficiency syndrome                          | 6     | 4   | 7   | 3   | 39    | 11    | 107   |
|  | Giardiasis  |       |     | 1   |     | 2     | 2     | 7     |
|  | Meningococcal meningitis                                    |       |     |     |     | 1     | 1     | 4     |
|  | Congenital rubella syndrome                                 |       |     |     |     |       |       |       |
|  | Syphilis  | 1     | 2   | 2   | 1   | 11    | 3     | 66    |
|  | Tetanus   |       |     |     |     |       |       | 6     |
|  | Vancomycin-resistant <i>Staphylococcus aureus</i> infection |       |     |     |     |       |       |       |
| Vancomycin-resistant <i>enterococcus</i> infection |   |       |     | 1   | 1   | 1     | 6     |       |

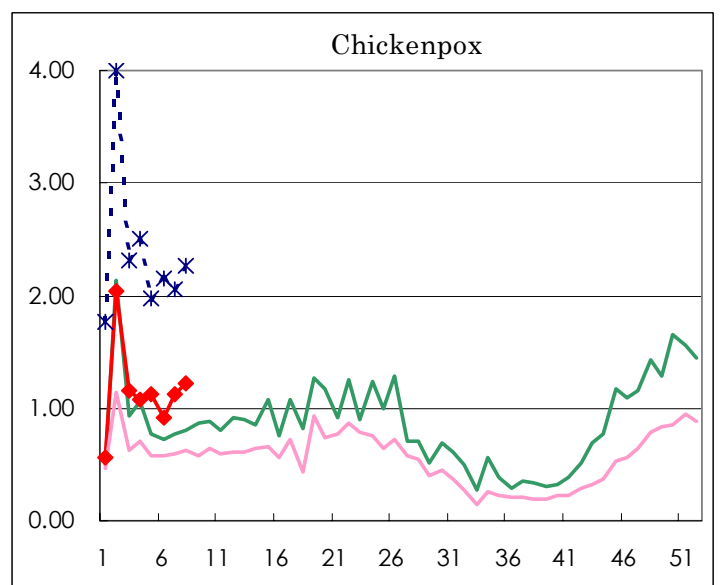
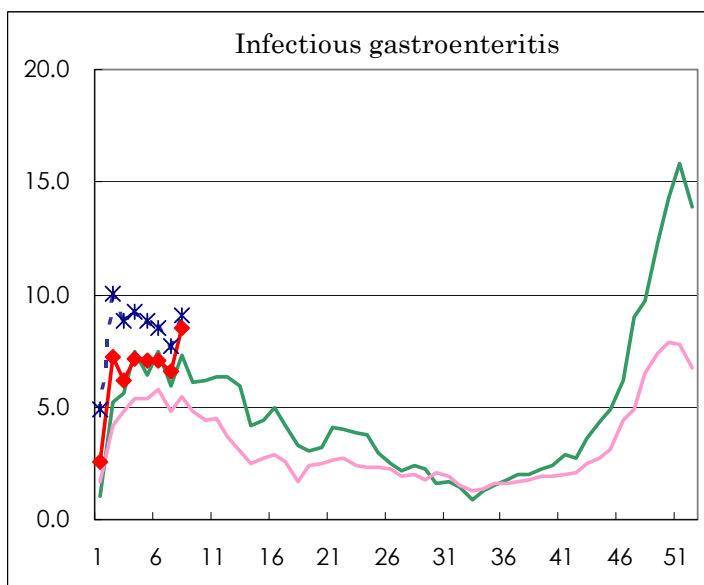
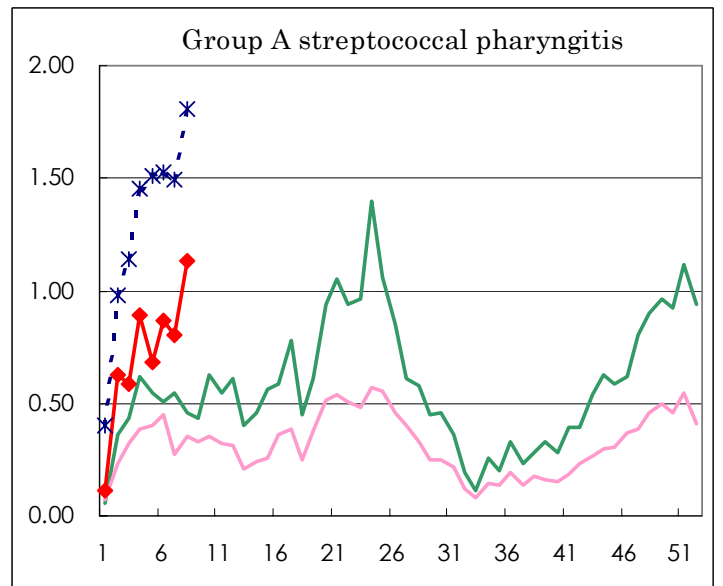
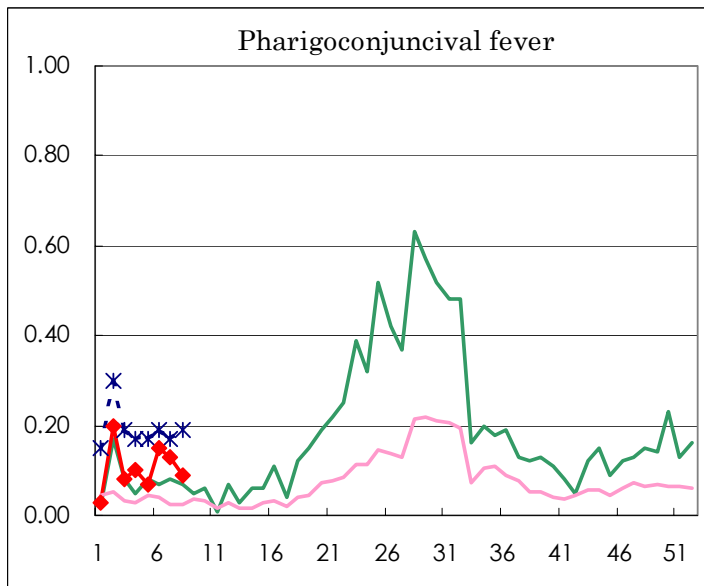
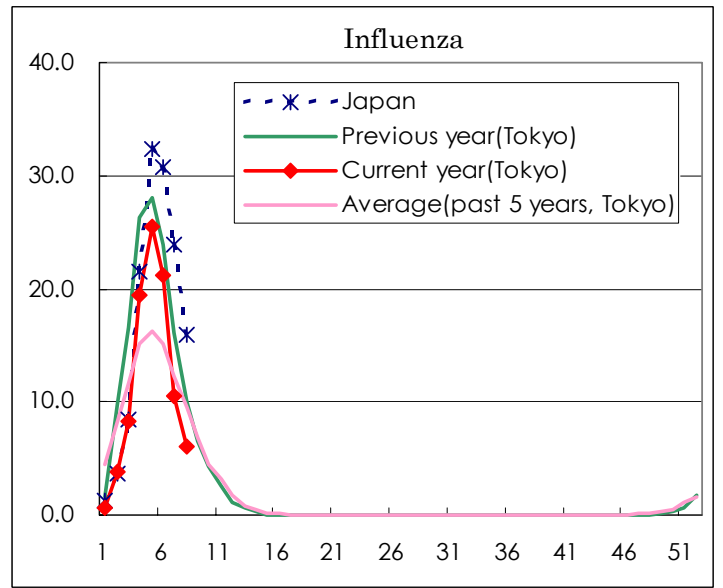
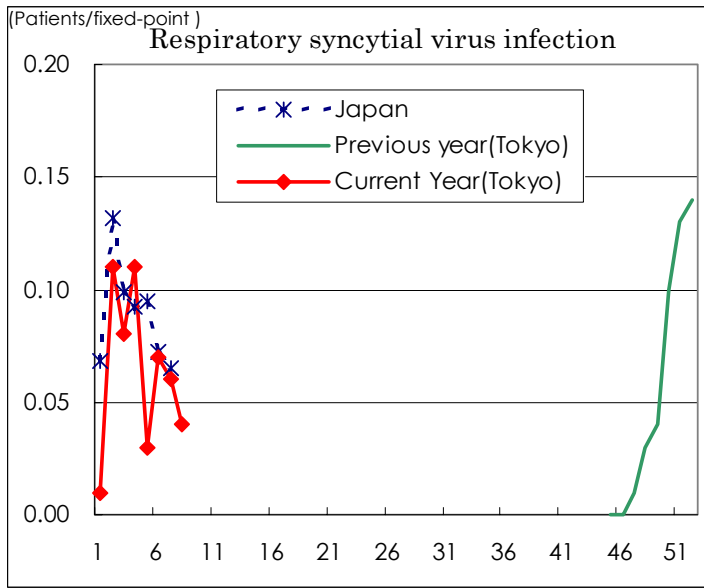
( Blank means 0. )

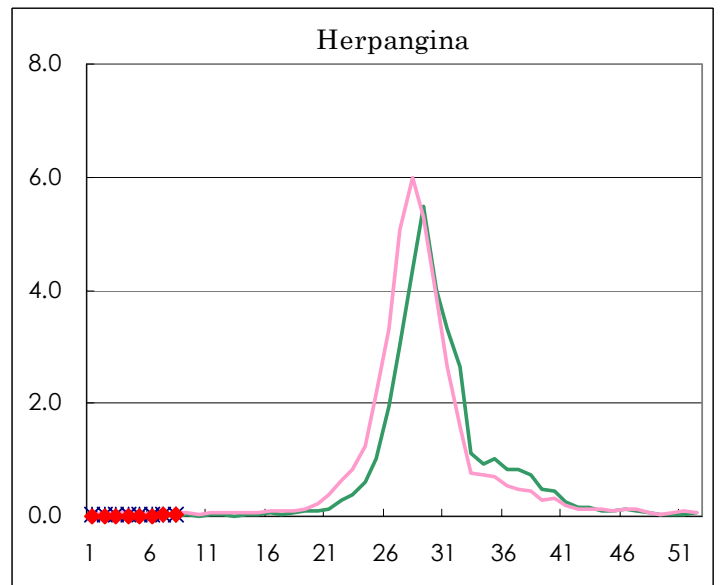
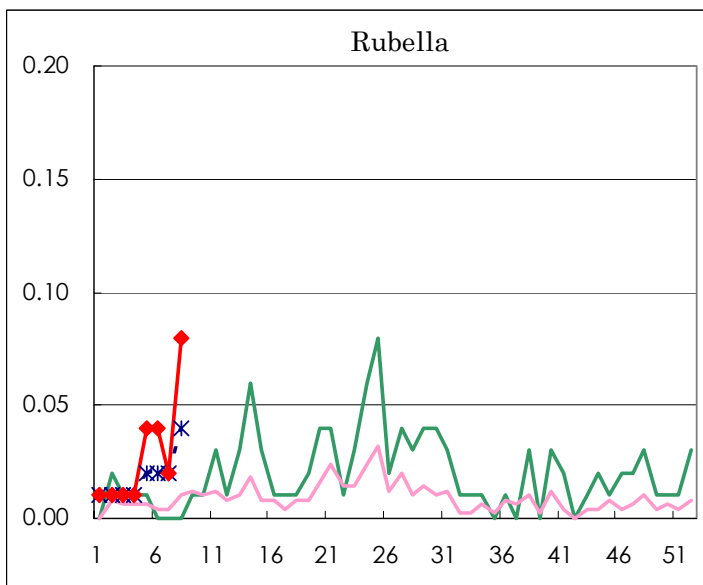
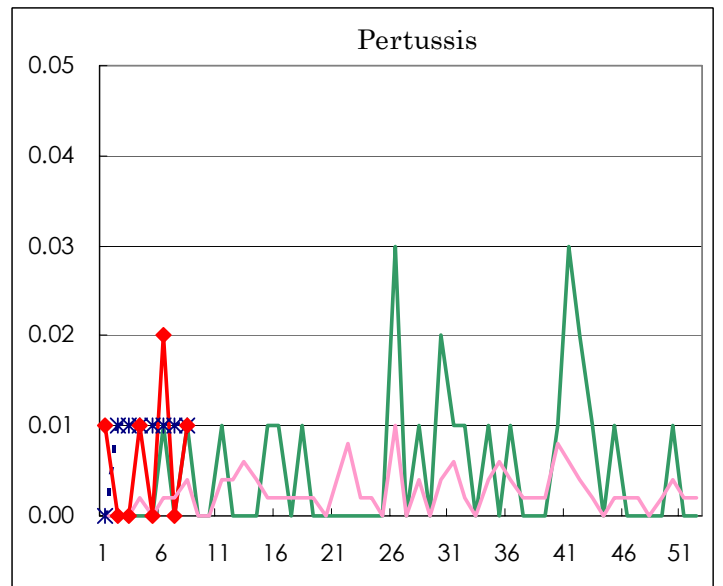
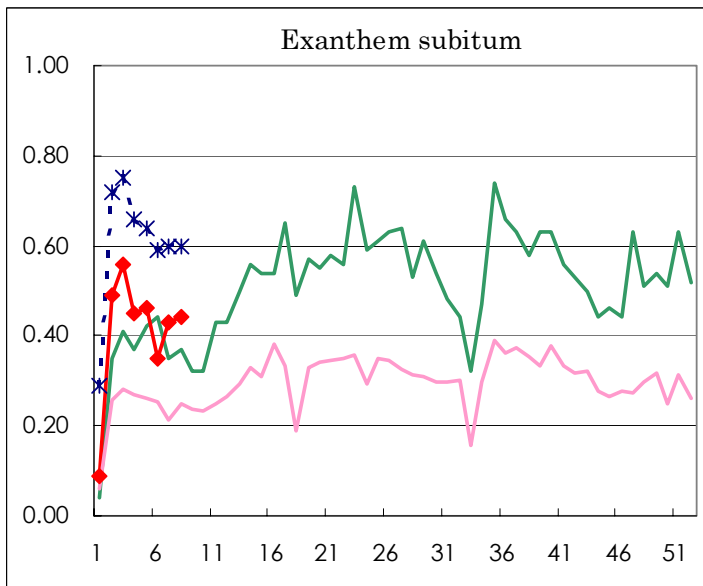
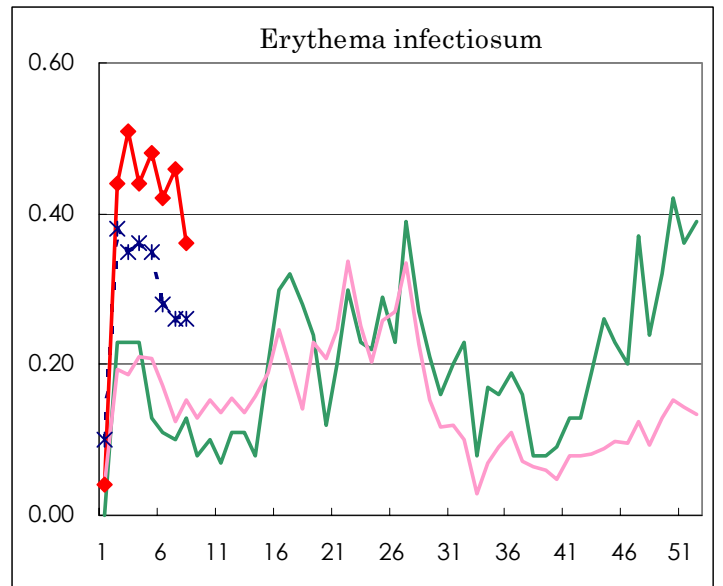
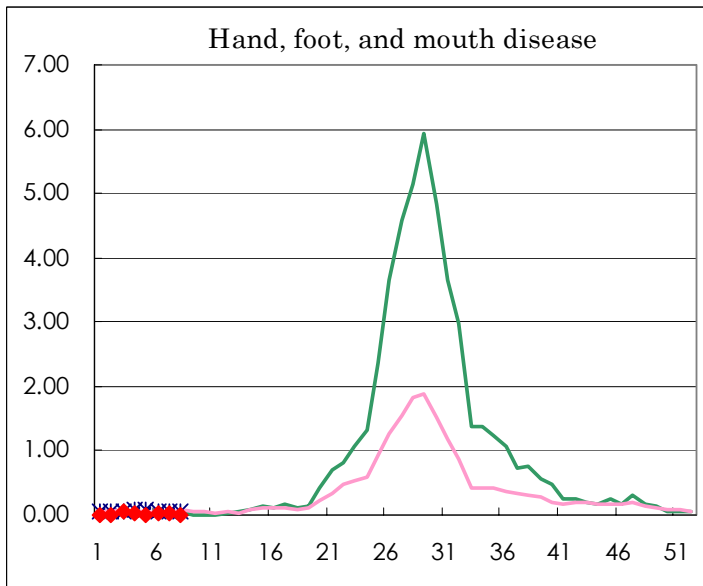
Number of patients with the diseases to be reported  
by the designated clinics and hospitals

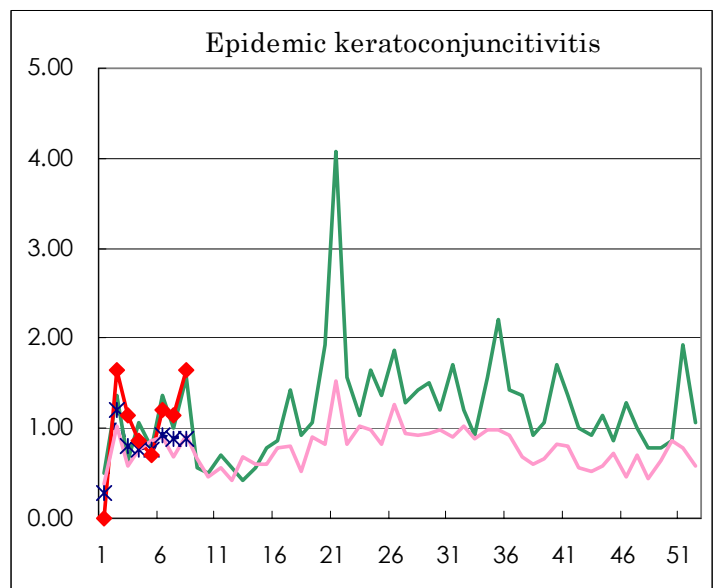
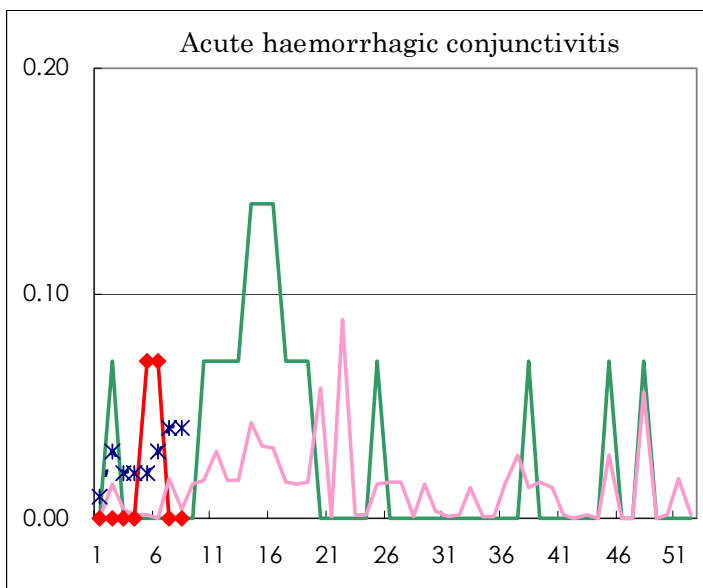
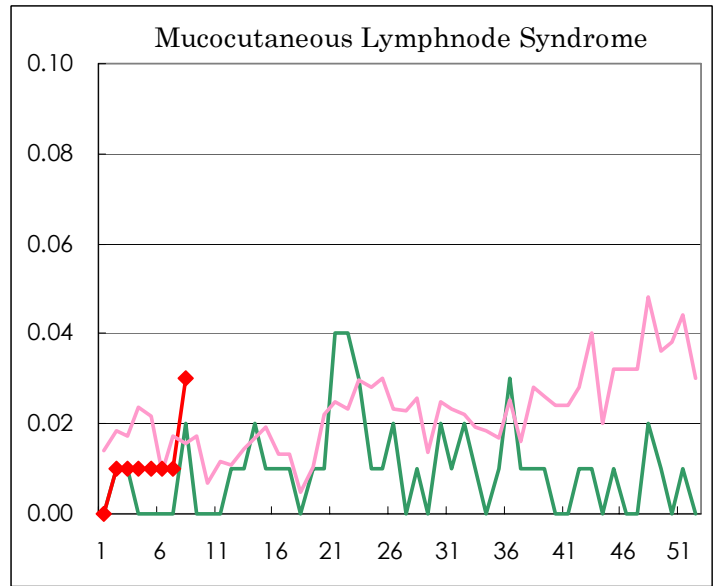
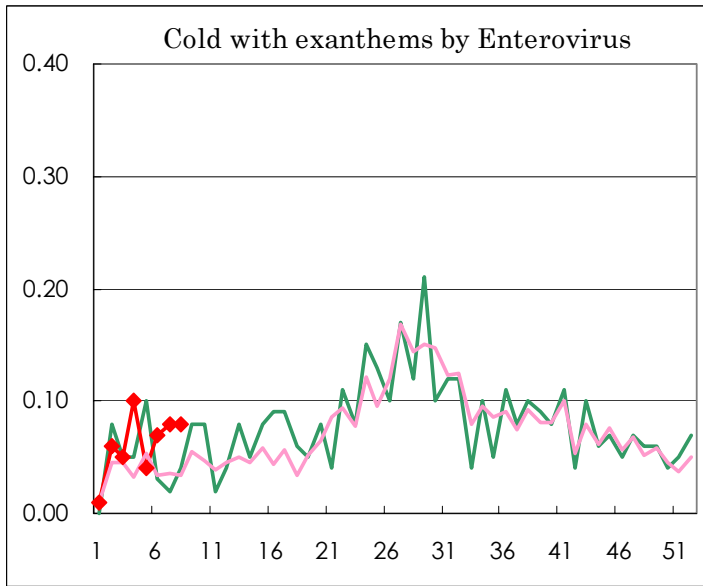
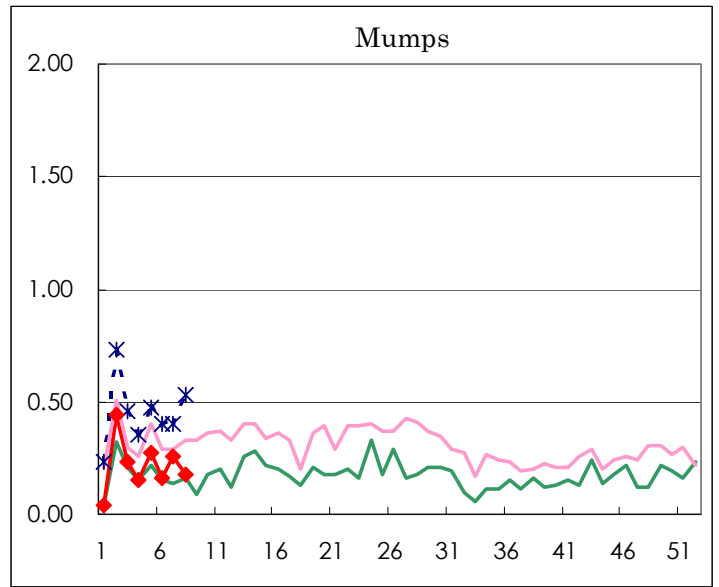
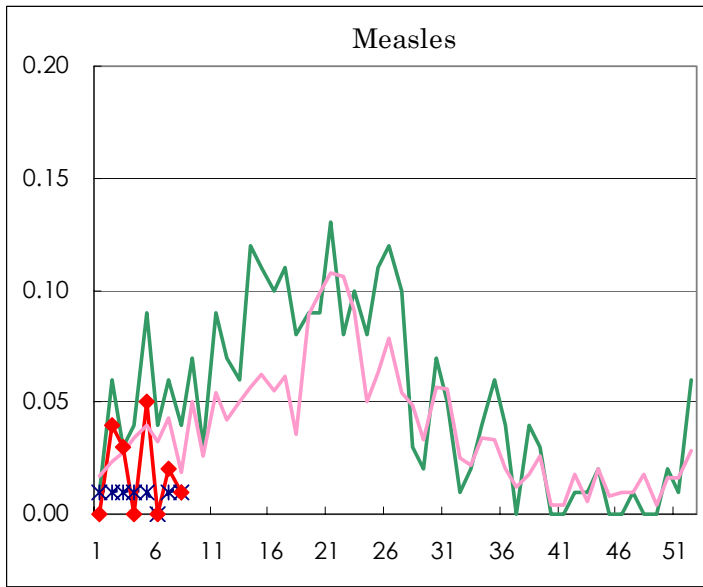
| Diseases  | Sex | 2004  |       |     |     | Total |
|---|-----|-------|-------|-----|-----|-------|
|   |     | 5th   | 6th   | 7th | 8th |       |
| Respiratory syncytial virus infection           | M   | 4     | 6     | 2   | 4   | 39    |
|   | F   |       | 4     | 6   | 2   | 25    |
| Influenza                                       | M   | 2,312 | 1,884 | 873 | 515 | 8,595 |
|   | F   | 2,240 | 1,831 | 998 | 568 | 8,433 |
| Pharyngoconjunctival fever                      | M   | 6     | 15    | 12  | 6   | 72    |
|   | F   | 4     | 6     | 6   | 7   | 49    |
| Group A streptococcal pharyngitis               | M   | 46    | 60    | 70  | 92  | 447   |
|   | F   | 51    | 64    | 44  | 69  | 367   |
| Infectious gastroenteritis                      | M   | 511   | 511   | 487 | 662 | 3,819 |
|   | F   | 493   | 514   | 453 | 550 | 3,662 |
| Chickenpox                                      | M   | 97    | 67    | 83  | 110 | 719   |
|   | F   | 63    | 65    | 77  | 63  | 593   |
| Hand, foot, and mouth disease                   | M   | 2     |       | 3   | 1   | 12    |
|   | F   |       | 3     | 2   |     | 14    |
| Erythema infectiosum                            | M   | 29    | 27    | 39  | 28  | 229   |
|   | F   | 39    | 32    | 27  | 23  | 220   |
| Exanthem subitum                                | M   | 40    | 27    | 35  | 37  | 247   |
|   | F   | 26    | 24    | 26  | 25  | 222   |
| Pertussis                                       | M   |       | 1     |     |     | 2     |
|   | F   |       | 2     |     | 1   | 4     |
| Rubella   | M   | 2     | 5     | 1   | 6   | 18    |
|   | F   | 3     | 1     | 2   | 5   | 13    |
| Herpangina                                      | M   |       |       | 3   | 2   | 7     |
|   | F   | 2     |       | 1   | 2   | 6     |
| Measles   | M   | 5     |       | 1   | 1   | 13    |
|   | F   | 2     |       | 2   | 1   | 8     |
| Mumps   | M   | 21    | 8     | 18  | 15  | 128   |
|   | F   | 17    | 15    | 19  | 10  | 116   |
| Cold with exanthems by Enterovirus              | M   | 2     | 7     | 2   | 4   | 35    |
|   | F   | 4     | 3     | 9   | 7   | 34    |
| Mucocutaneous Lymphnode Syndrome                | M   |       | 1     | 1   | 3   | 8     |
|   | F   | 1     |       |     | 1   | 3     |
| Acute hemorrhagic conjunctivitis                | M   | 1     | 1     |     |     | 2     |
|   | F   |       |       |     |     |       |
| Epidemic keratoconjunctivitis                   | M   | 7     | 7     | 9   | 14  | 66    |
|   | F   | 3     | 10    | 7   | 9   | 51    |
| Bacterial meningitis                            | M   |       |       |     |     |       |
|   | F   |       |       |     |     | 1     |
| Aseptic meningitis                              | M   | 1     |       | 2   |     | 4     |
|   | F   | 1     |       | 2   | 2   | 5     |
| Mycoplasma pneumonia                            | M   | 2     | 2     | 3   |     | 8     |
|   | F   | 1     | 1     |     |     | 3     |
| Chlamydial pneumonia<br>(excluding psittacosis) | M   |       |       |     |     |       |
|   | F   |       |       | 2   |     | 2     |
| Measles in adults                               | M   |       | 1     |     |     | 1     |
|   | F   |       |       |     |     |       |

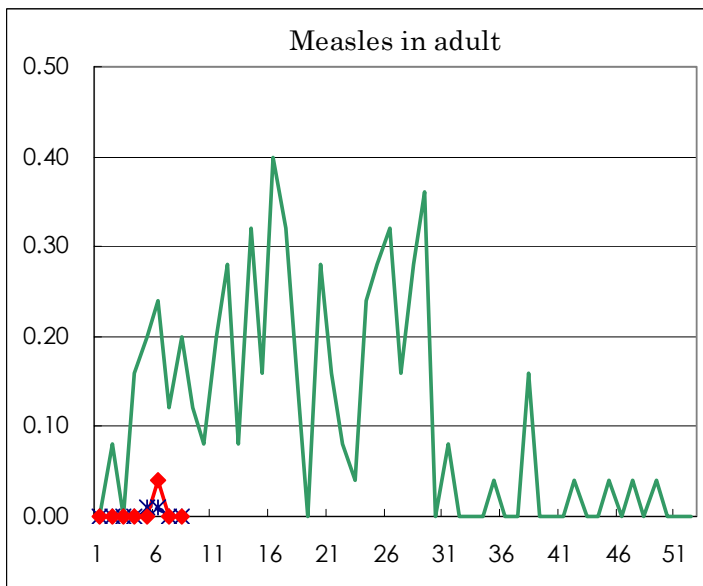
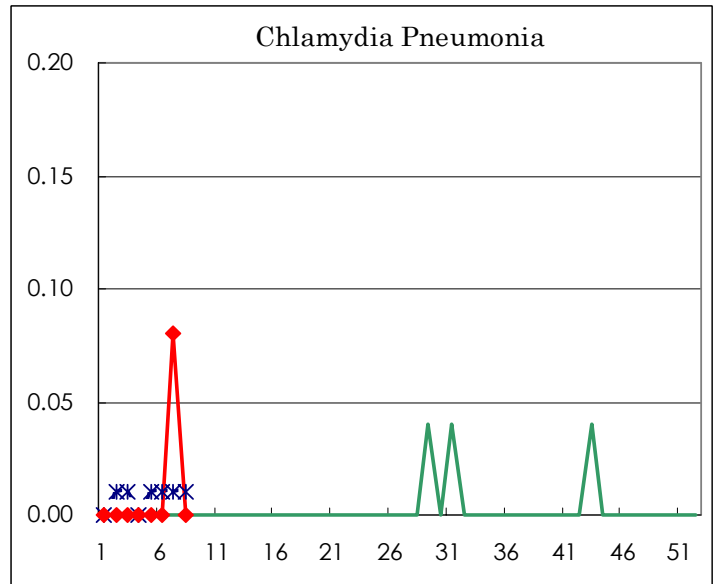
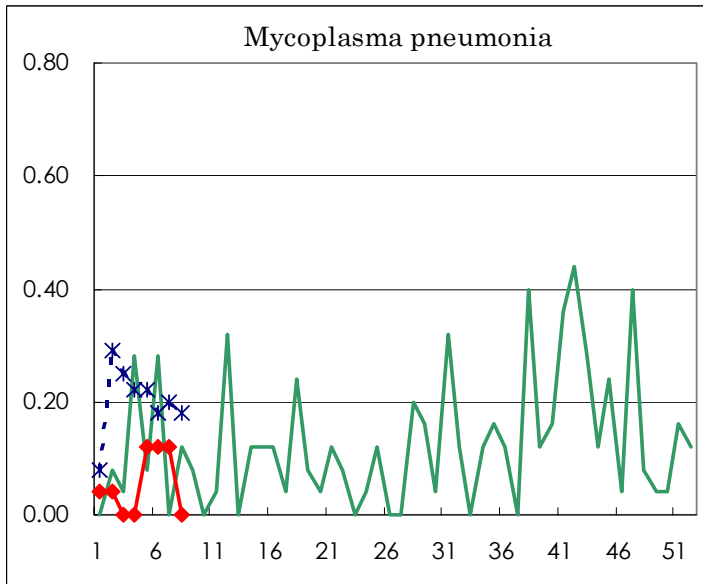
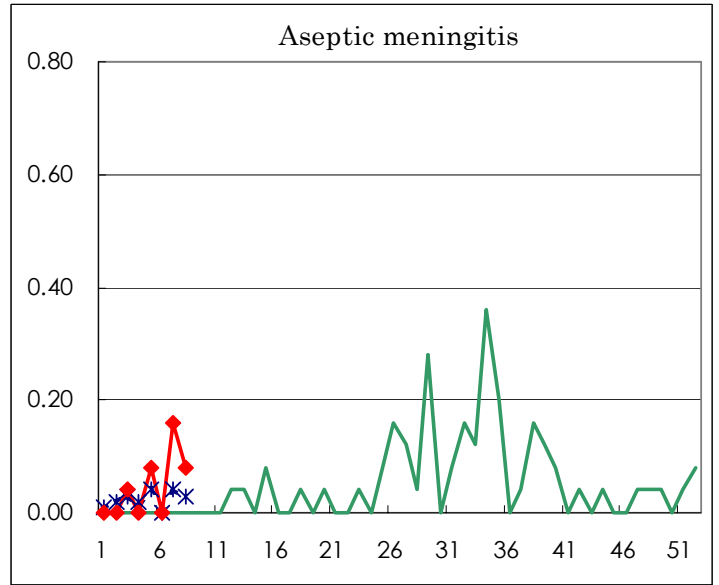
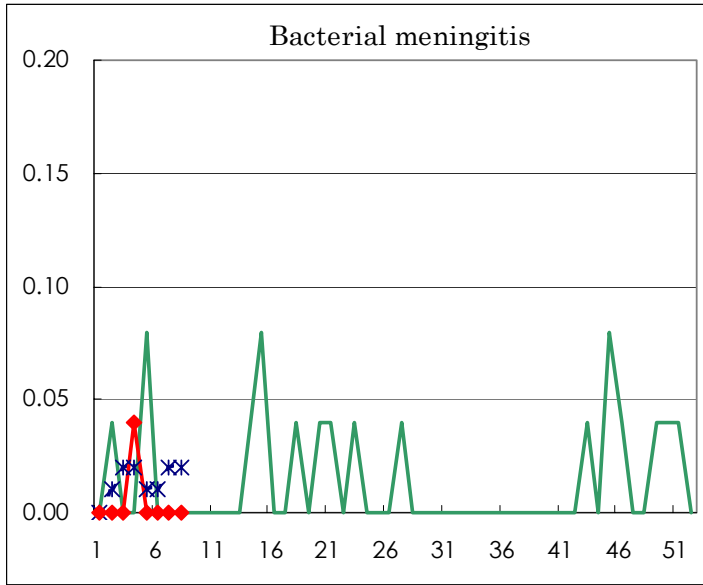
( Blank means 0. )

# Disease Trend Graph (weekly reported cases per fixed-point in comparison)









Tokyo Metropolitan Government  
**Infectious Disease Surveillance Center**