

INFECTIOUS DISEASES WEEKLY REPORT

TOKYO IDWR

Tokyo Metropolitan Institute of Public Health

16 March 2004 / Number 10

- Number of patients with the diseases required notifying all the cases
- Number of patients with the diseases to be reported by the designated clinics and hospitals
- Disease trend graph (weekly reported cases per fixed-point in comparison)

Surveillance System in Tokyo, Japan

The diseases which all physicians must report

All physicians must report to health centers the incidence of the diseases which are shown at page one. Health centers electronically report the individual case to Tokyo Metropolitan Infectious Disease Surveillance Center.

Fixed-point surveillance

The numbers of patients who visit designated clinics or hospitals during a week are reported to health centers (There are 37 in Tokyo). And they electronically report the numbers to Tokyo Metropolitan Infectious Disease Surveillance Center. We have about 200 fixed points (clinics and hospitals) in Tokyo.

1st Week is early January and 52nd Week is end of December.

Tokyo Metropolitan Infectious Disease Surveillance Center
Tokyo Metropolitan Institute of Public Health

TEL:81-3-3363-3213 FAX:81-3-5332-7365
e-mail: idsc@tokyo-eiken.go.jp
URL: idsc.tokyo-eiken.go.jp/

Number of patients with the diseases which all physicians must report

Category	Diseases	Tokyo					Japan	
		7th	8th	9th	10th	Total	10th	Total
I	Ebola hemorrhagic fever							
	Crimean-Congo hemorrhagic fever							
	Severe acute respiratory syndrome							
	Smallpox							
	Plague							
	Marburg disease							
	Lassa fever							
II	Acute poliomyelitis							
	Cholera							5
	Shigellosis	1	2	2	5	19	8	58
	Diphtheria							
	Typhoid fever							1
	Paratyphoid fever	1				1		3
III	Enterohemorrhagic <i>Escherichia coli</i> infection	3	3	3		15	3	62
IV	Hepatitis E							(2)
	West Nile fever							
	Hepatitis A	1	2	1		7	(3)	(34)
	Echinococcosis						1	9
	Yellow fever							
	Psittacosis							5
	Relapsing fever							
	Q fever						2	3
	Rabies							
	High pathogenic avian influenza							
	Coccidioidomycosis							1
	Monkeypox							
	Hemorrhagic fever with renal syndrome							
	Anthrax							
	Scrub typhus (Tsumugamushi disease)		2			5		43
	Dengue fever					1		2
	Nipah virus infection							
	Japanese spotted fever							
	Japanese encephalitis							
	Hantavirus pulmonary syndrome							
	B virus disease							
	Brucellosis							
	Epidemic typhus							
Botulism								
Malaria			1	1	5	3	9	
Tularemia								
Lyme disease								
Lyssavirus infection								
Legionellosis	1				2	1	18	
Leptospirosis								
V	Amebiasis	2	1	4	2	26	3	90
	Acute viral hepatitis(excluding Hepatitis A,Hepatitis E)					4	2	43
	Acute encephalitis		1			1	1	4
	Cryptosporidiosis					1		1
	Creutzfeldt-Jakob Disease		2			2	3	30
	Sever invasive streptococcal infections		1	1		3	1	12
	Acquired immunodeficiency syndrome	7	3	15	6	60	7	151
	Giardiasis	1				2		11
	Meningococcal meningitis					1		5
	Congenital rubella syndrome				1	1	1	2
	Syphilis	2	1	1	1	13	6	83
	Tetanus						1	7
	Vancomycin-resistant <i>Staphylococcus aureus</i> infection							
	Vancomycin-resistant <i>enterococcus</i> infection		1			1	1	7

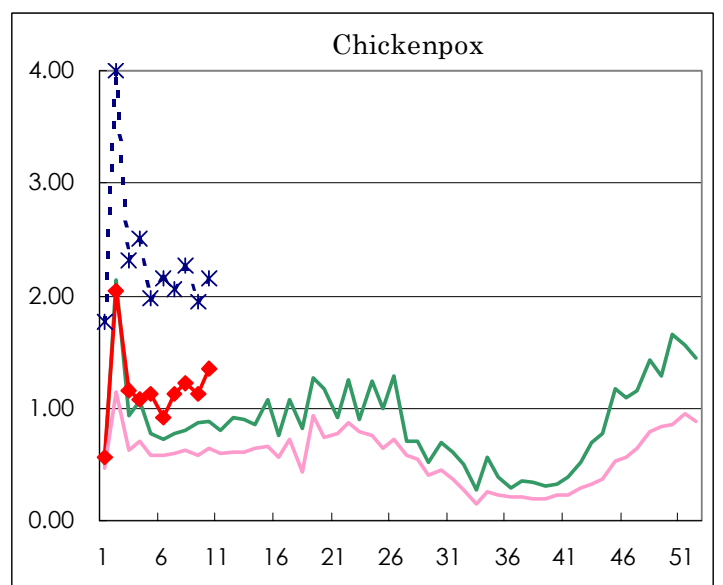
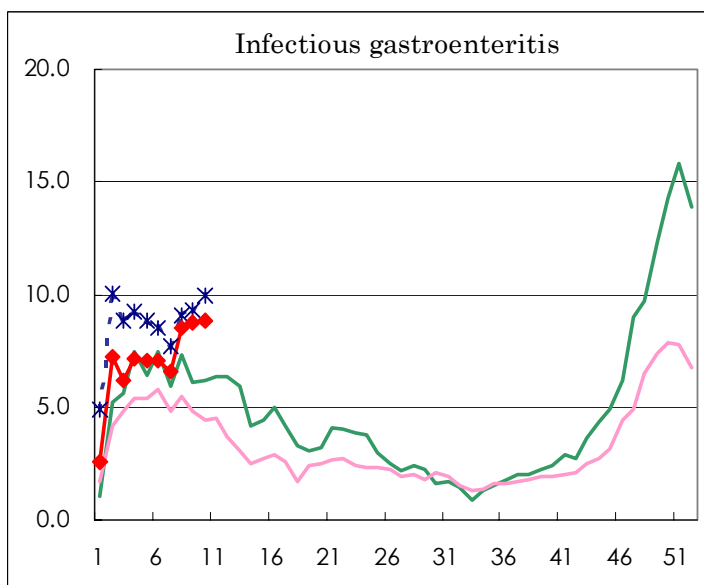
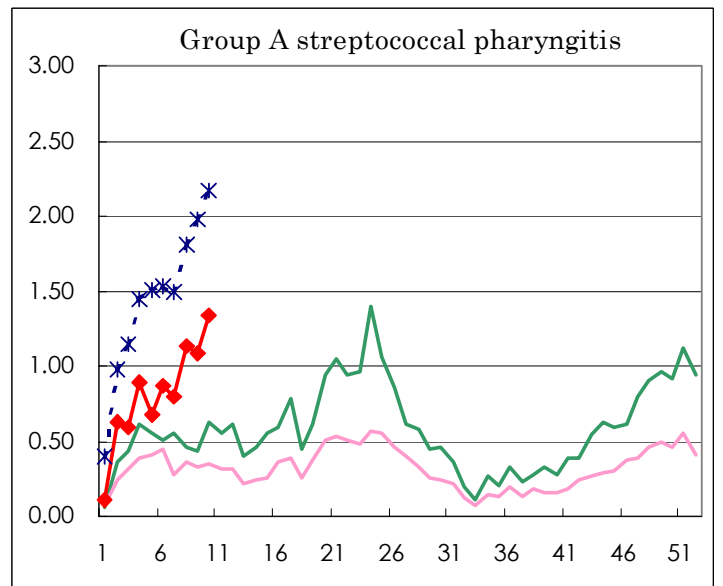
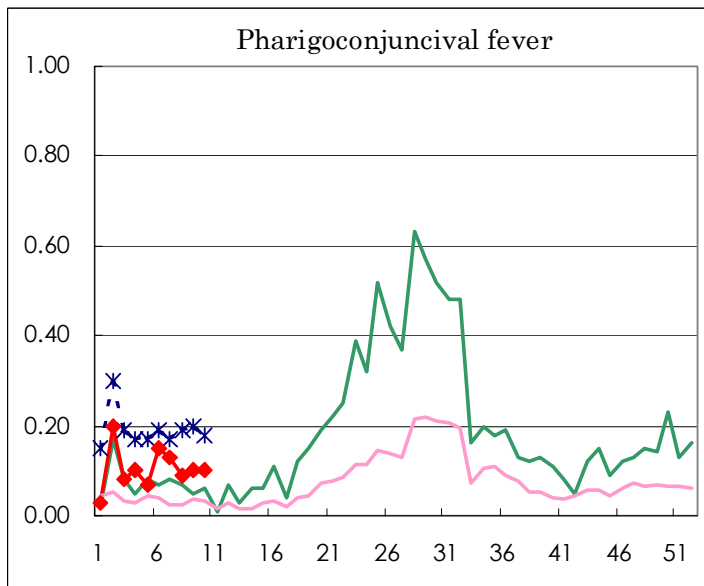
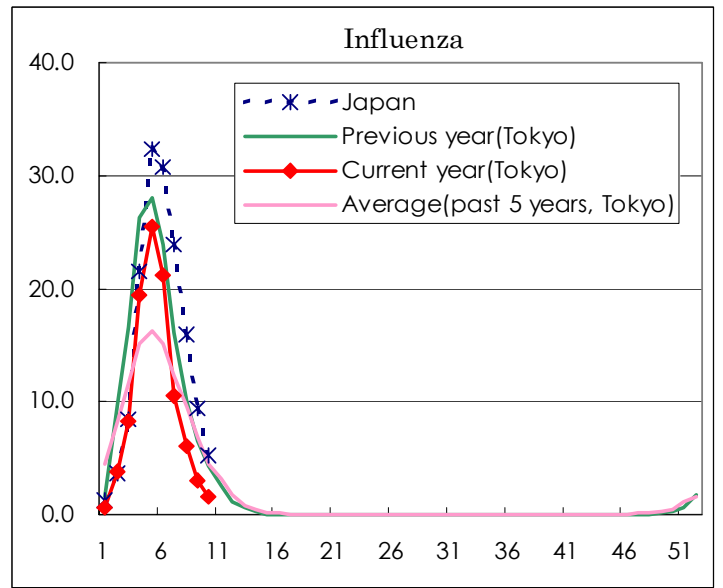
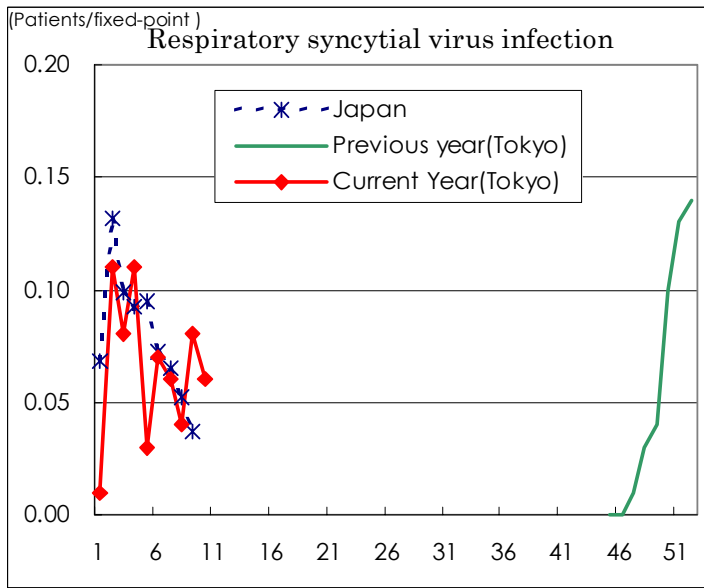
(Blank means 0.)

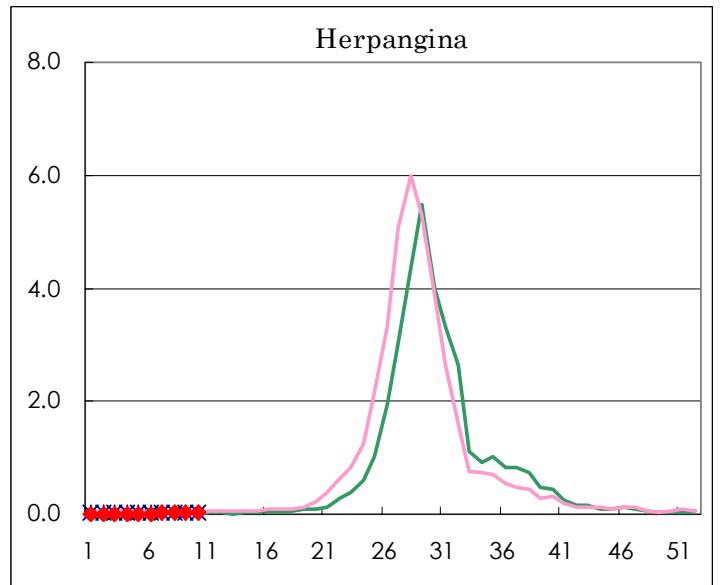
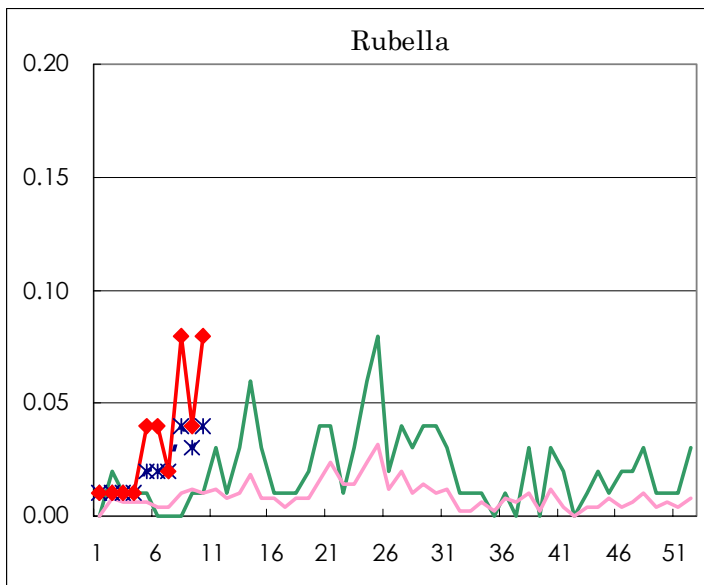
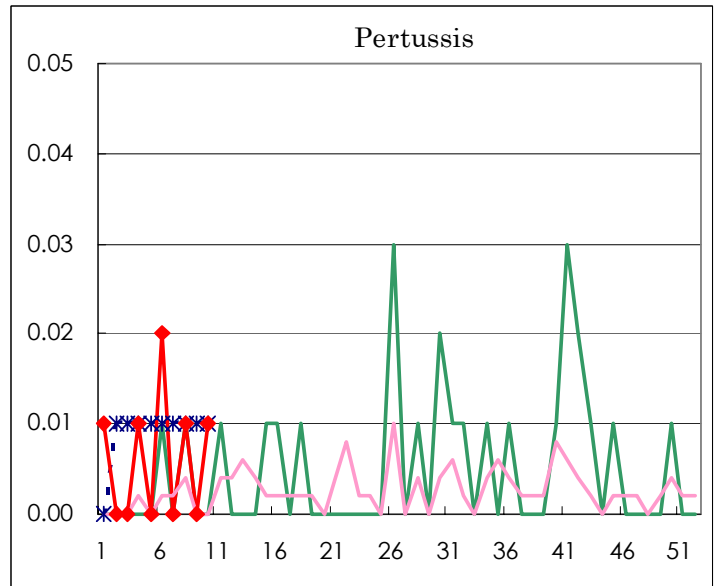
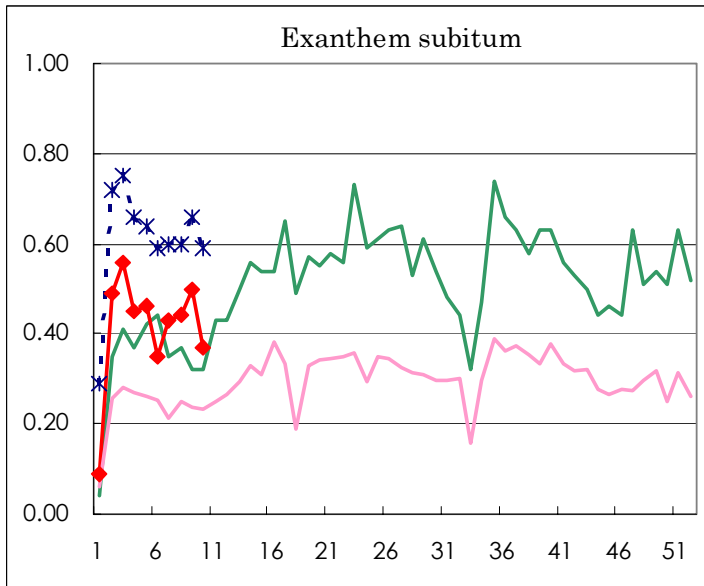
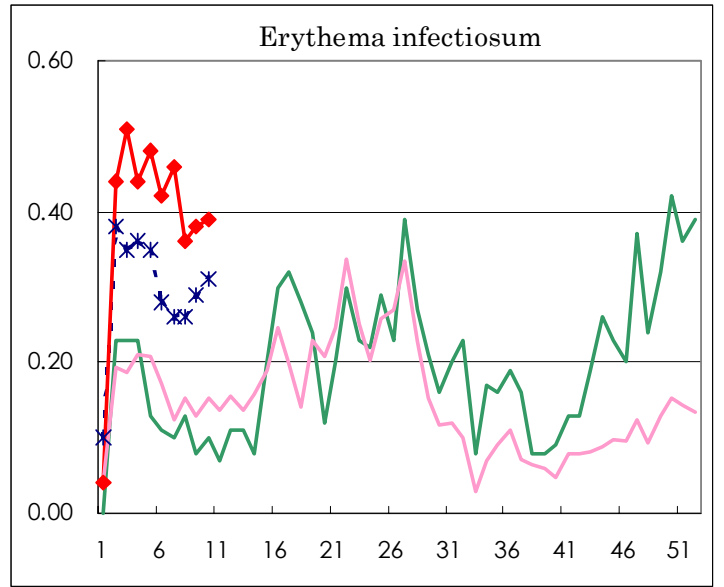
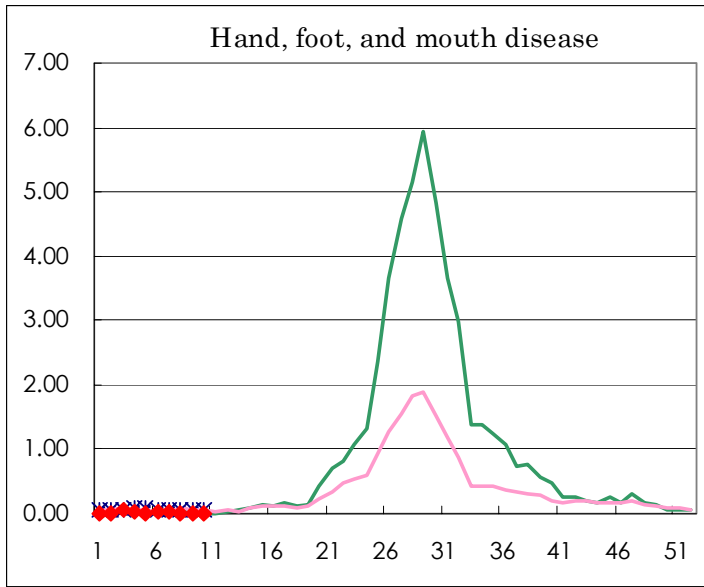
Number of patients with the diseases to be reported
by the designated clinics and hospitals

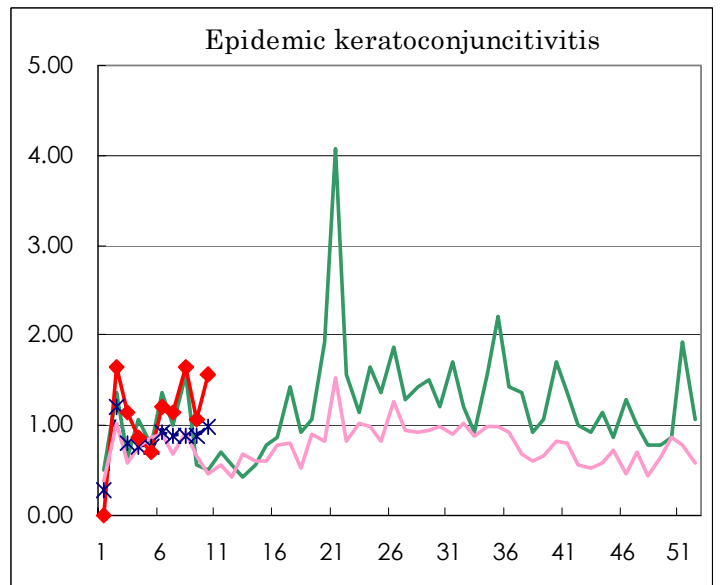
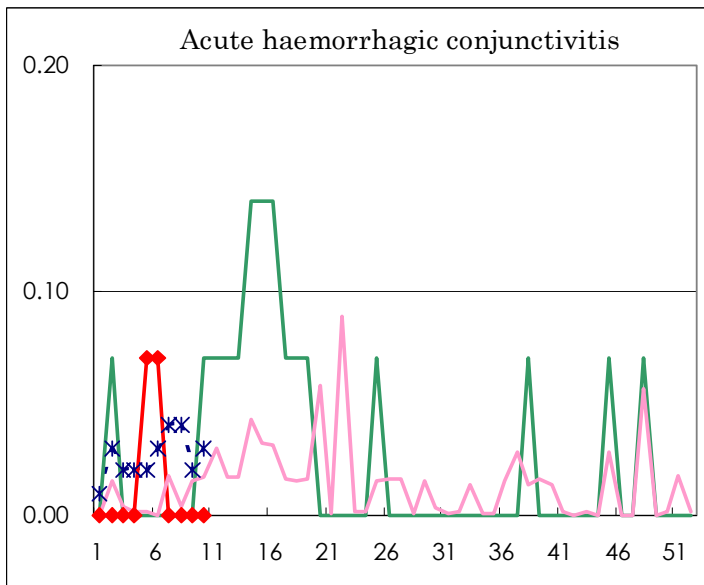
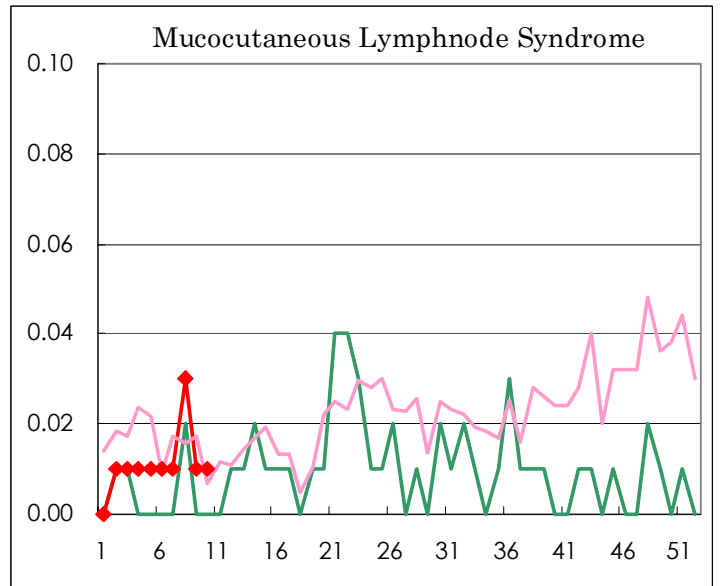
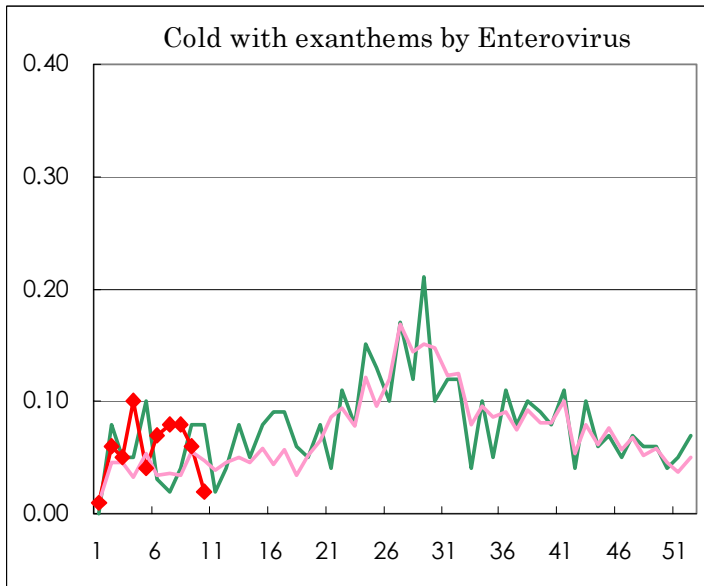
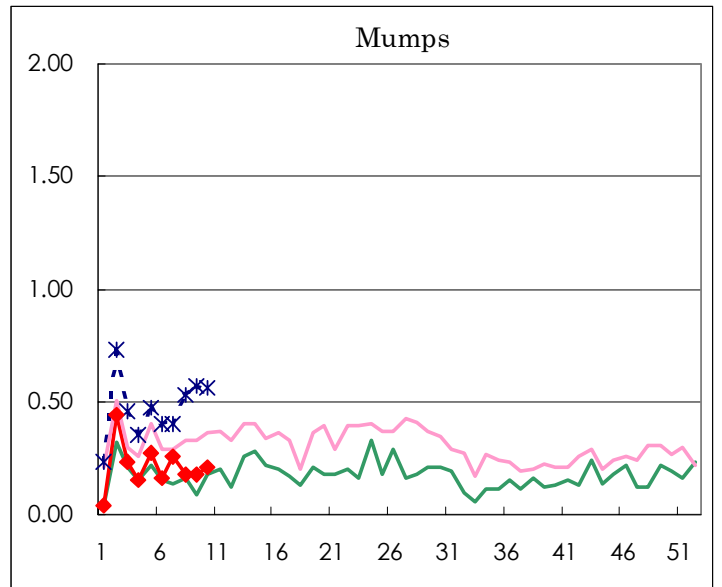
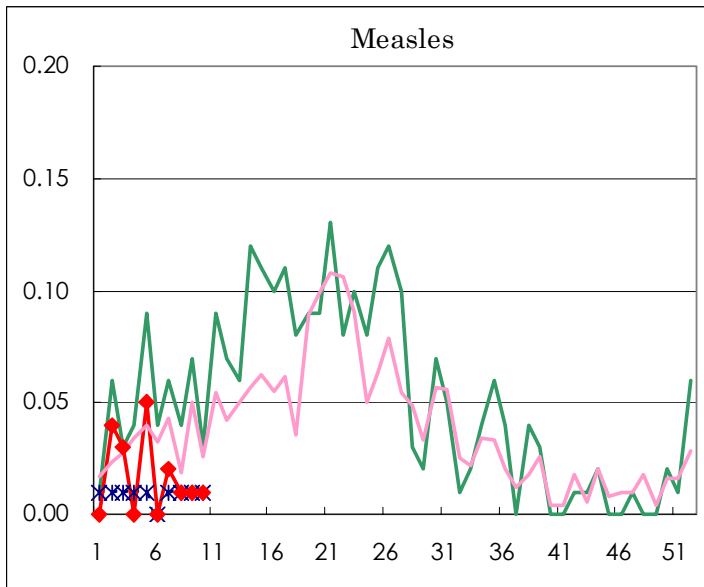
Diseases	Sex	2004				Total
		7th	8th	9th	10th	
Respiratory syncytial virus infection	M	2	4	7	3	49
	F	6	2	4	5	34
Influenza	M	873	515	264	130	8,989
	F	998	568	288	152	8,873
Pharygoconjunctival fever	M	12	6	11	9	92
	F	6	7	3	5	57
Group A streptococcal pharyngitis	M	70	92	90	101	638
	F	44	69	63	89	519
Infectious gastroenteritis	M	487	662	591	623	5,033
	F	453	550	650	631	4,943
Chickenpox	M	83	110	91	107	917
	F	77	63	70	85	748
Hand, foot, and mouth disease	M	3	1			12
	F	2		1	1	16
Erythema infectiosum	M	39	28	32	23	284
	F	27	23	22	33	275
Exanthem subitum	M	35	37	39	30	316
	F	26	25	32	22	276
Pertussis	M					2
	F		1		1	5
Rubella	M	1	6	6	8	32
	F	2	5		4	17
Herpangina	M	3	2	2	2	11
	F	1	2	1	1	8
Measles	M	1	1	1	1	15
	F	2	1		1	9
Mumps	M	18	15	14	20	162
	F	19	10	11	10	137
Cold with exanthems by Enterovirus	M	2	4	4	2	41
	F	9	7	4	1	39
Mucocutaneous Lymphnode Syndrome	M	1	3			8
	F		1	1	1	5
Acute hemorrhagic conjunctivitis	M					2
	F					
Epidemic keratoconjunctivitis	M	9	14	6	8	80
	F	7	9	9	14	74
Bacterial meningitis	M					
	F					1
Aseptic meningitis	M	2				4
	F	2	2		1	6
Mycoplasma pneumonia	M	3				8
	F					3
Chlamydial pneumonia (excluding psittacosis)	M			1		1
	F	2				2
Measles in adults	M					1
	F					

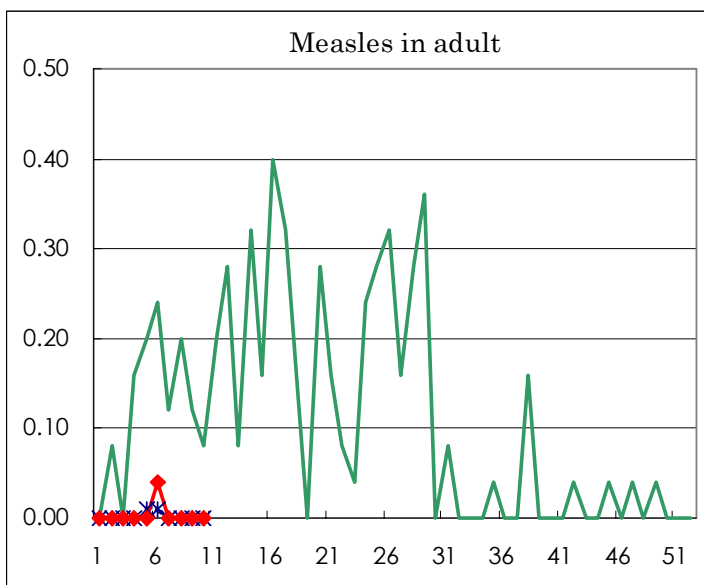
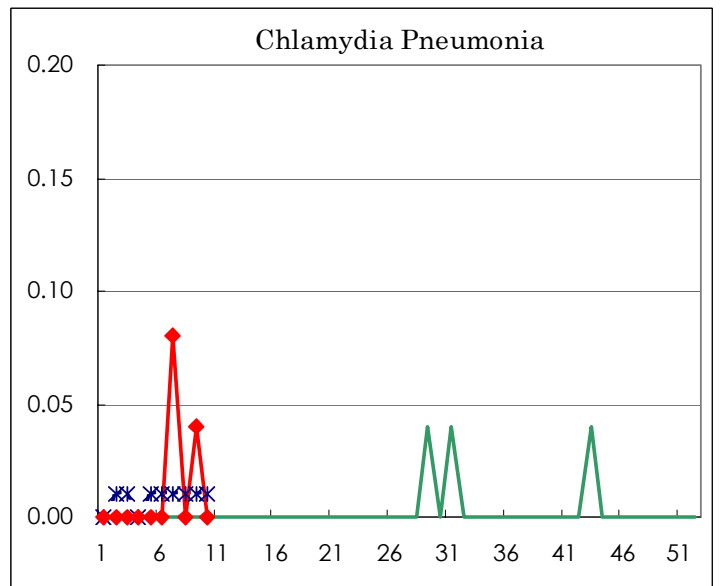
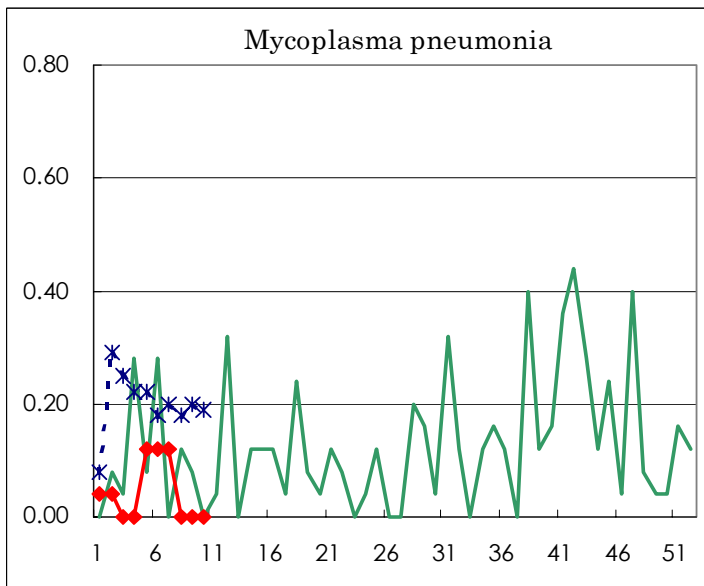
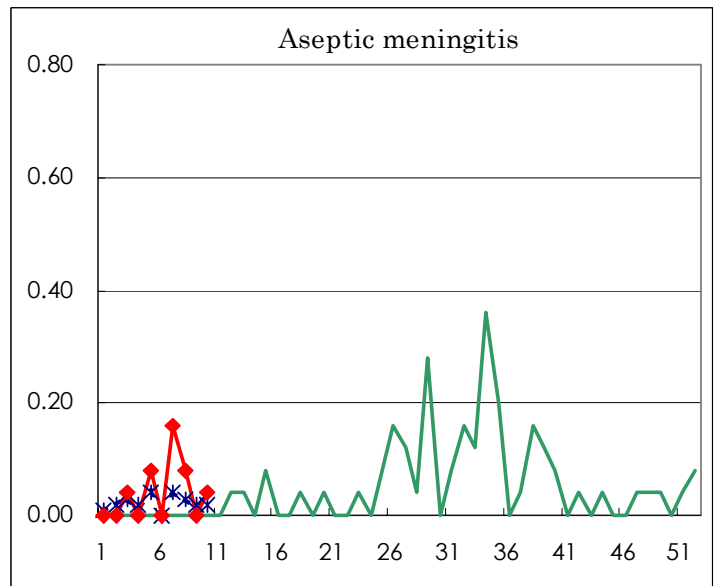
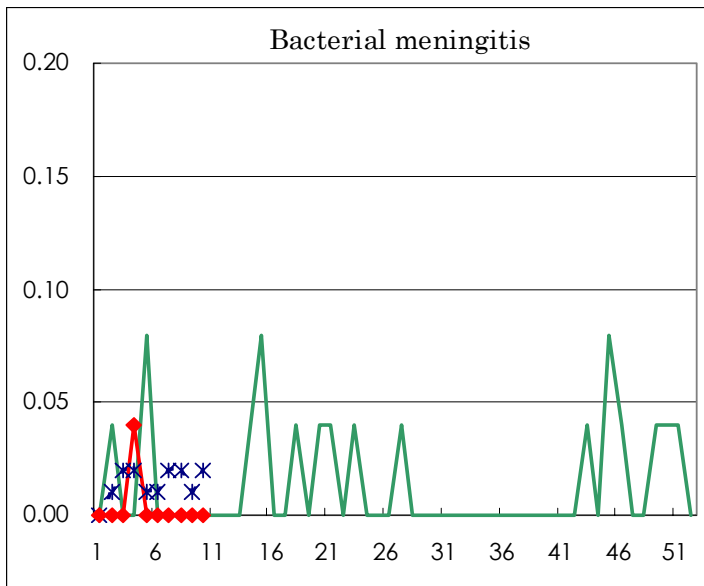
(Blank means 0.)

Disease Trend Graph (weekly reported cases per fixed-point in comparison)









Tokyo Metropolitan Government
Infectious Disease Surveillance Center