

INFECTIOUS DISEASES WEEKLY REPORT

# TOKYO IDWR

Tokyo Metropolitan Institute of Public Health

22 March 2004 / Number 11

- Number of patients with the diseases required notifying all the cases
- Number of patients with the diseases to be reported by the designated clinics and hospitals
- Disease trend graph (weekly reported cases per fixed-point in comparison)

## Surveillance System in Tokyo, Japan

### The diseases which all physicians must report

All physicians must report to health centers the incidence of the diseases which are shown at page one. Health centers electronically report the individual case to Tokyo Metropolitan Infectious Disease Surveillance Center.

### Fixed-point surveillance

The numbers of patients who visit designated clinics or hospitals during a week are reported to health centers ( There are 37 in Tokyo). And they electronically report the numbers to Tokyo Metropolitan Infectious Disease Surveillance Center. We have about 200 fixed points (clinics and hospitals) in Tokyo.

1<sup>st</sup> Week is early January and 52<sup>nd</sup> Week is end of December.

Tokyo Metropolitan Infectious Disease Surveillance Center  
Tokyo Metropolitan Institute of Public Health

TEL:81-3-3363-3213 FAX:81-3-5332-7365

e-mail: [idsc@tokyo-eiken.go.jp](mailto:idsc@tokyo-eiken.go.jp)

URL: [idsc.tokyo-eiken.go.jp/](http://idsc.tokyo-eiken.go.jp/)

## Number of patients with the diseases which all physicians must report

Category	Diseases	Tokyo				Japan		
		8th	9th	10th	11st	Total	11st	Total
I	Ebola hemorrhagic fever							
	Crimean-Congo hemorrhagic fever							
	Severe acute respiratory syndrome							
	Smallpox							
	Plague							
	Marburg disease							
	Lassa fever							
II	Acute poliomyelitis							
	Cholera						1	6
	Shigellosis	2	2	5	1	20	8	67
	Diphtheria							
	Typhoid fever				1	1	1	2
	Paratyphoid fever					1		3
III	Enterohemorrhagic <i>Escherichia coli</i> infection	3	3			15	9	72
IV	Hepatitis E							(3)
	West Nile fever							
	Hepatitis A	2	1			7	(3)	(38)
	Echinococcosis							9
	Yellow fever							
	Psittacosis							6
	Relapsing fever							
	Q fever							2
	Rabies							
	High pathogenic avian influenza							
	Coccidioidomycosis							1
	Monkeypox							
	Hemorrhagic fever with renal syndrome							
	Anthrax							
	Scrub typhus (Tsumugamushi disease)	2				5	1	45
	Dengue fever					1		2
	Nipah virus infection							
	Japanese spotted fever							
	Japanese encephalitis							
	Hantavirus pulmonary syndrome							
	B virus disease							
	Brucellosis							
Epidemic typhus								
Botulism								
Malaria		1	1		5	2	11	
Tularemia								
Lyme disease								
Lyssavirus infection								
Legionellosis					2		19	
Leptospirosis								
V	Amebiasis	1	4	2	4	30	4	100
	Acute viral hepatitis(excluding Hepatitis A,Hepatitis E)				3	7	2	49
	Acute encephalitis	1				1		4
	Cryptosporidiosis					1		1
	Creutzfeldt-Jakob Disease	2				2	3	33
	Sever invasive streptococcal infections	1	1			3		12
	Acquired immunodeficiency syndrome	3	15	6	11	71	13	175
	Giardiasis					2		9
	Meningococcal meningitis				1	2	2	7
	Congenital rubella syndrome			1		1		2
	Syphilis	1	1	1		13	4	90
	Tetanus							7
	Vancomycin-resistant <i>Staphylococcus aureus</i> infection							
	Vancomycin-resistant <i>enterococcus</i> infection	1				1	1	9

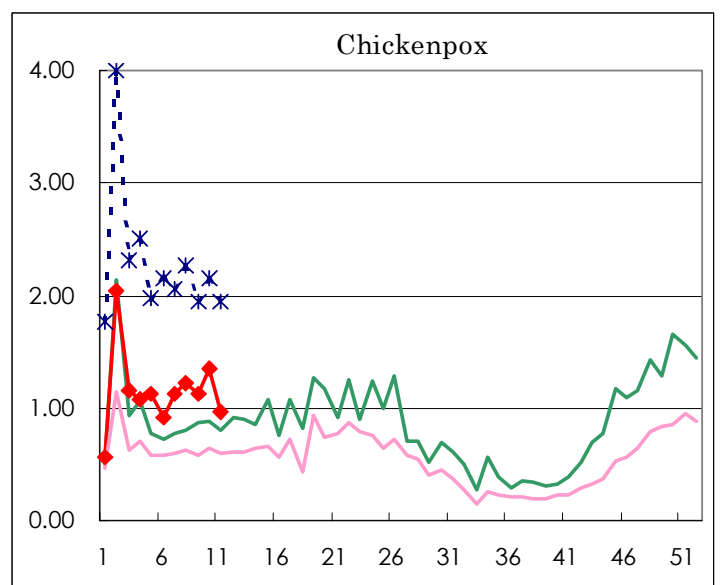
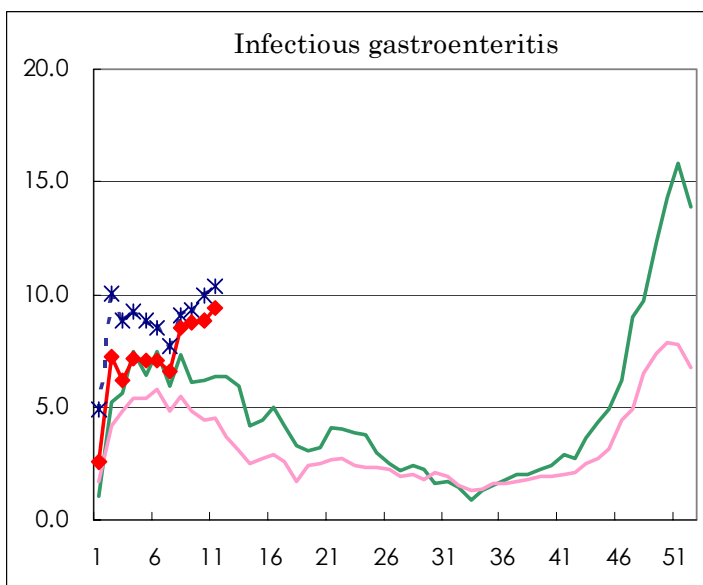
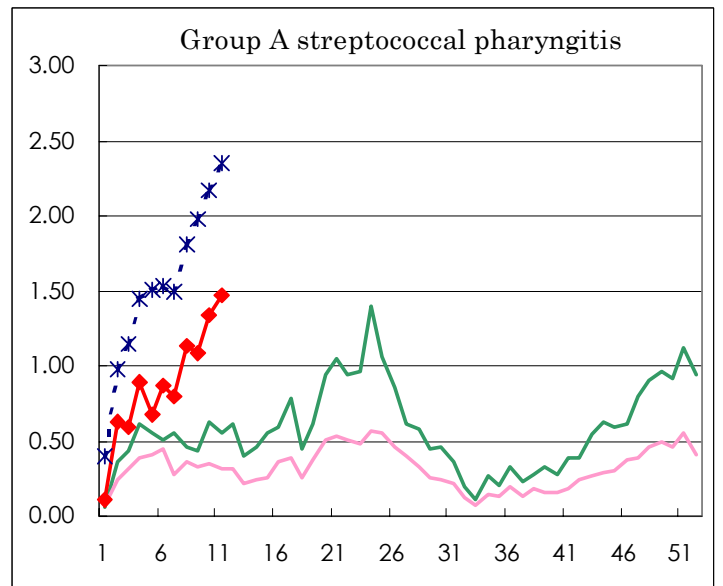
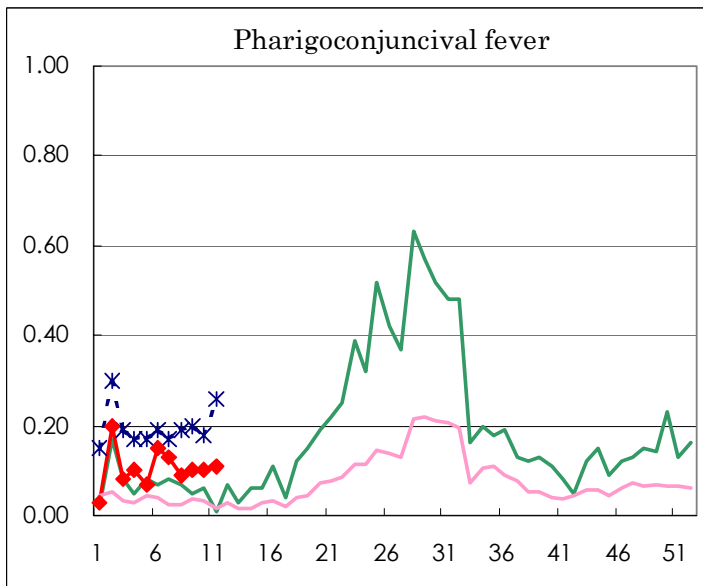
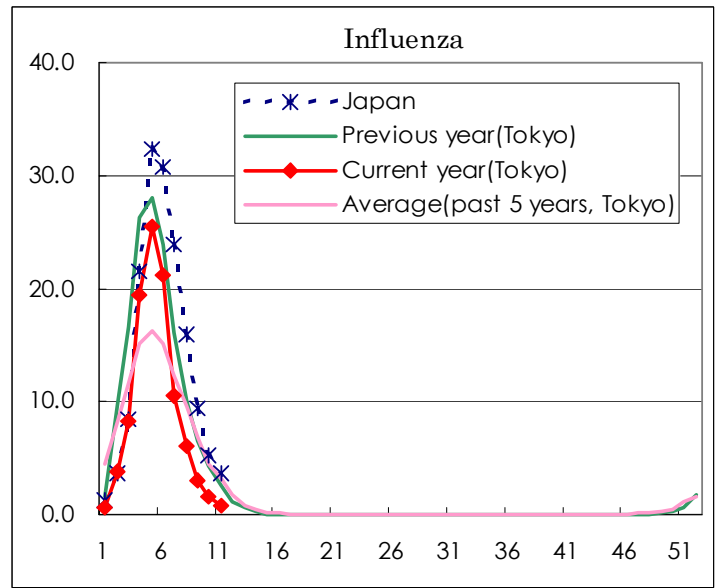
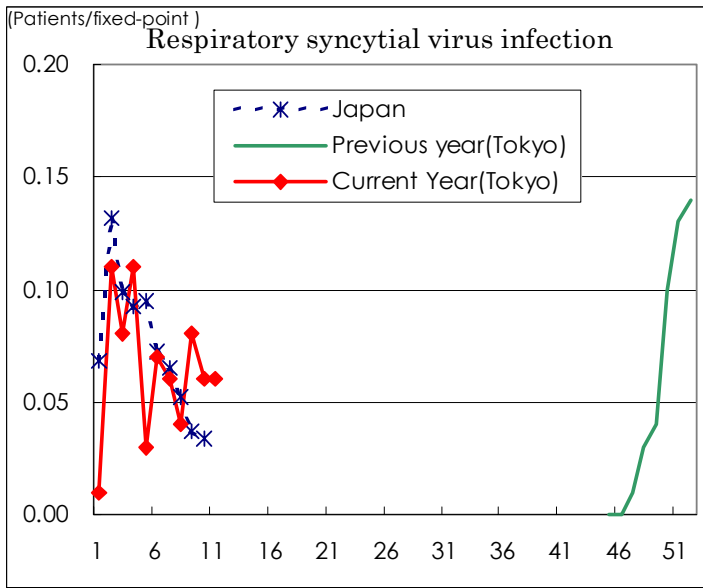
( Blank means 0. )

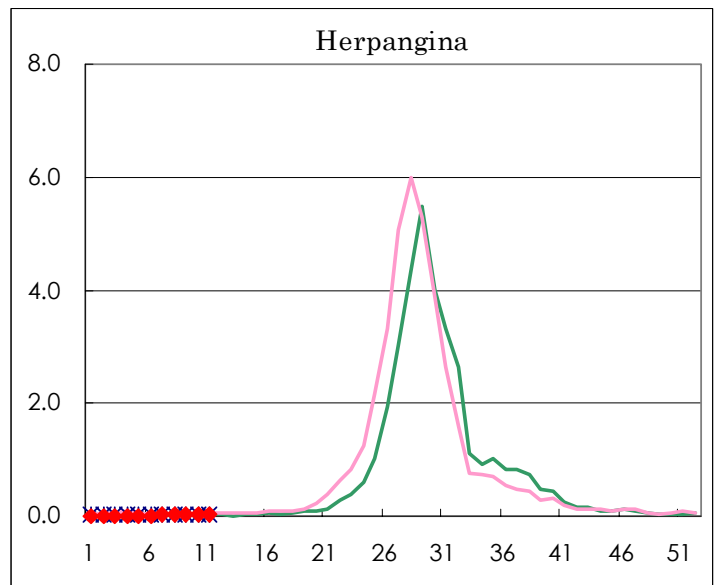
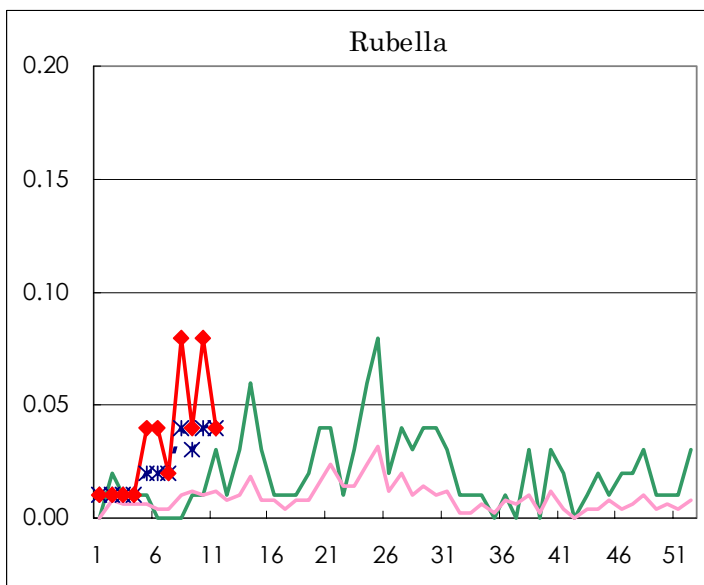
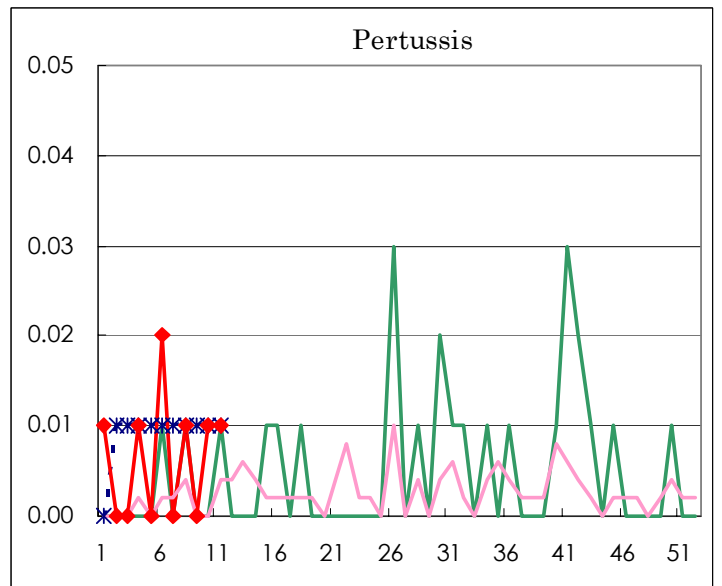
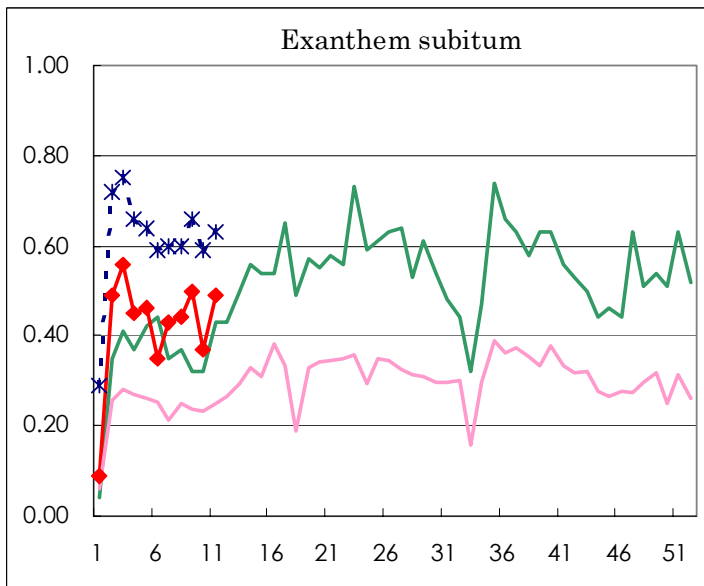
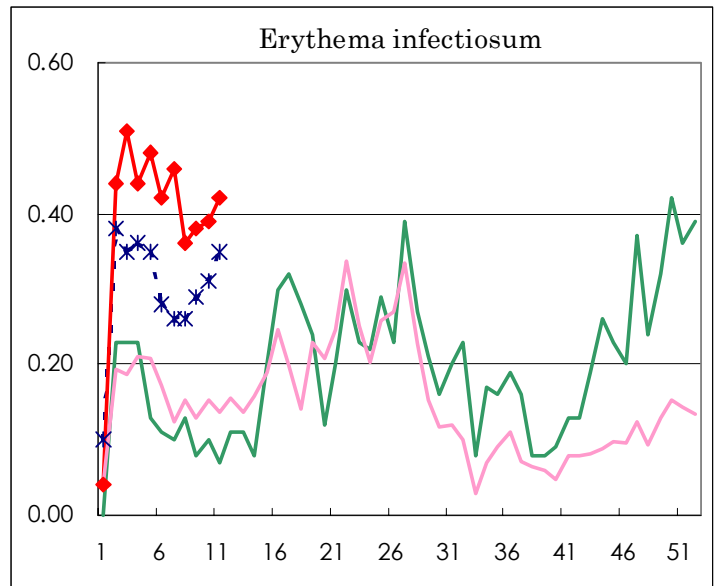
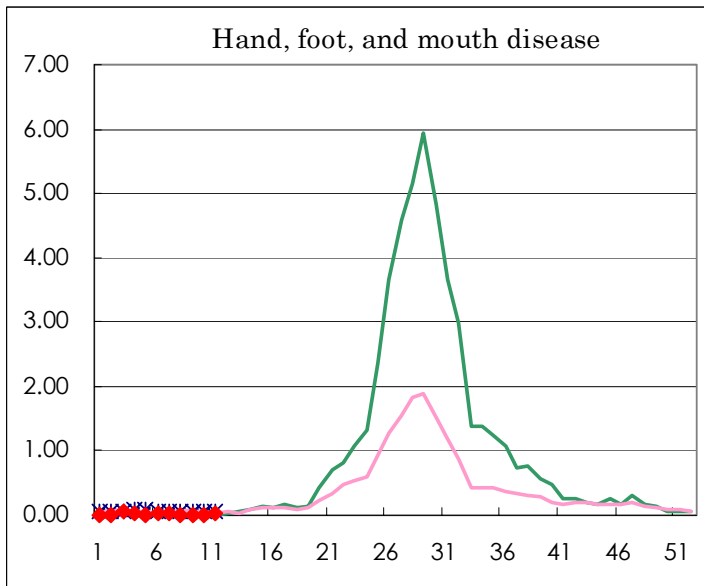
Number of patients with the diseases to be reported  
by the designated clinics and hospitals

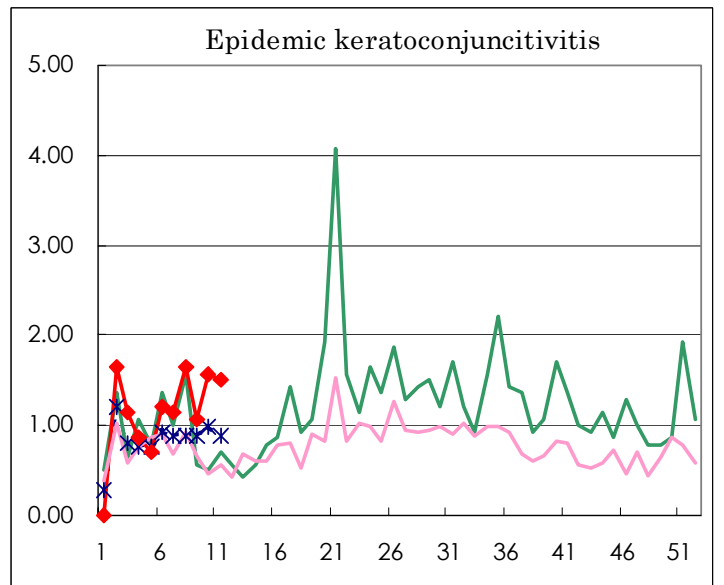
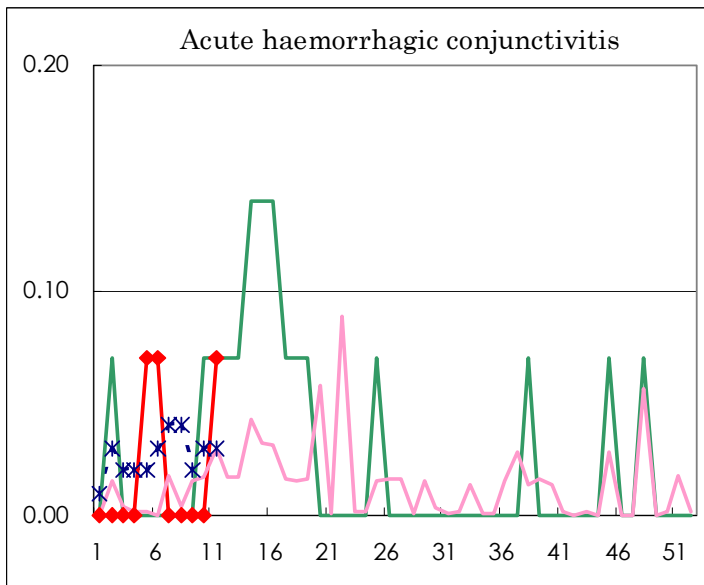
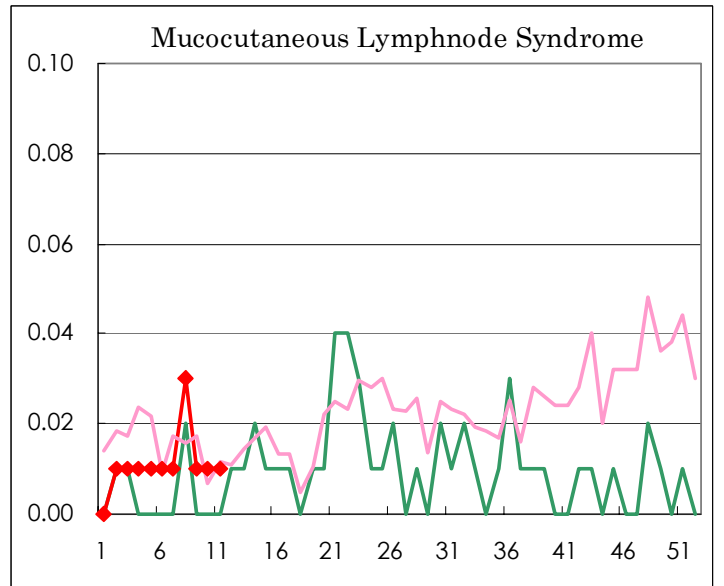
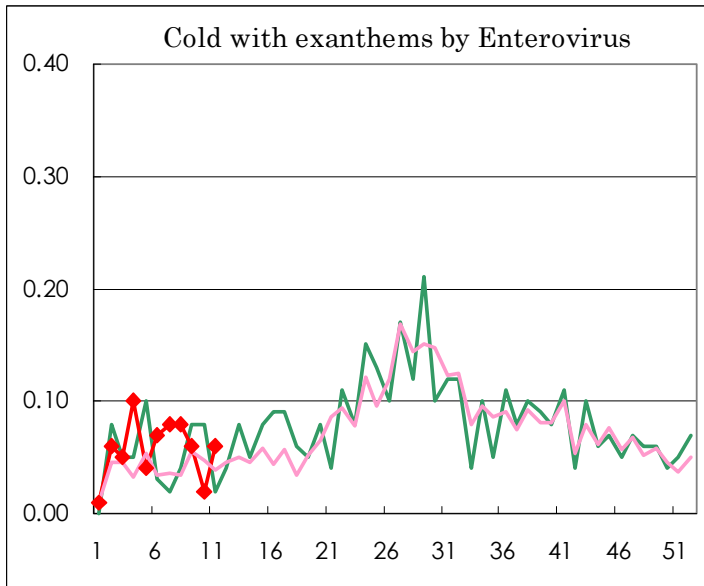
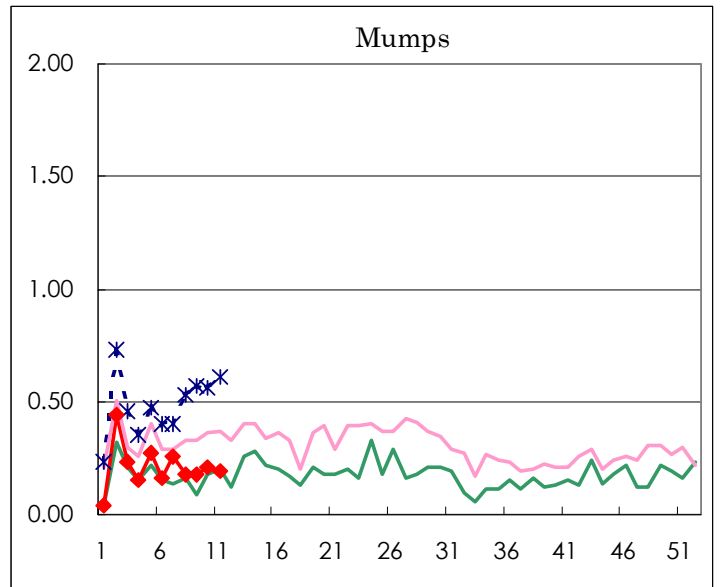
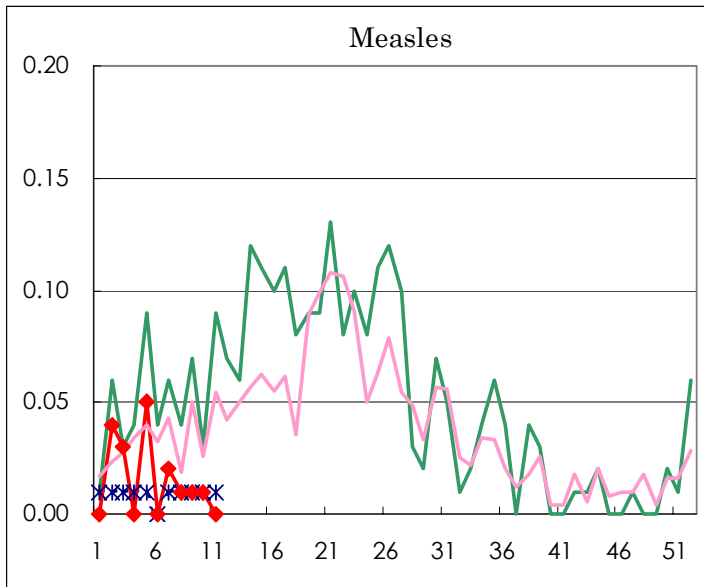
Diseases	Sex	2004				Total
		8th	9th	10th	11st	
Respiratory syncytial virus infection	M	4	7	3	5	54
	F	2	4	5	4	38
Influenza	M	515	264	130	78	9,067
	F	568	288	152	60	8,933
Pharygoconjunctival fever	M	6	11	9	9	101
	F	7	3	5	7	64
Group A streptococcal pharyngitis	M	92	90	101	108	746
	F	69	63	89	101	620
Infectious gastroenteritis	M	662	591	623	714	5,747
	F	550	650	631	617	5,560
Chickenpox	M	110	91	107	67	984
	F	63	70	85	69	817
Hand, foot, and mouth disease	M	1			2	14
	F		1	1	2	18
Erythema infectiosum	M	28	32	23	28	312
	F	23	22	33	31	306
Exanthem subitum	M	37	39	30	39	355
	F	25	32	22	31	307
Pertussis	M				1	3
	F	1		1		5
Rubella	M	6	6	8	2	34
	F	5		4	4	21
Herpangina	M	2	2	2	4	15
	F	2	1	1	1	9
Measles	M	1	1	1		15
	F	1		1		9
Mumps	M	15	14	20	18	180
	F	10	11	10	9	146
Cold with exanthems by Enterovirus	M	4	4	2	4	45
	F	7	4	1	4	43
Mucocutaneous Lymphnode Syndrome	M	3				8
	F	1	1	1	2	7
Acute hemorrhagic conjunctivitis	M					2
	F				1	1
Epidemic keratoconjunctivitis	M	14	6	8	10	90
	F	9	9	14	11	85
Bacterial meningitis	M			1	1	2
	F					1
Aseptic meningitis	M					4
	F	2		1		6
Mycoplasma pneumonia	M				2	10
	F				2	5
Chlamydial pneumonia (excluding psittacosis)	M		1			1
	F					2
Measles in adults	M					1
	F					

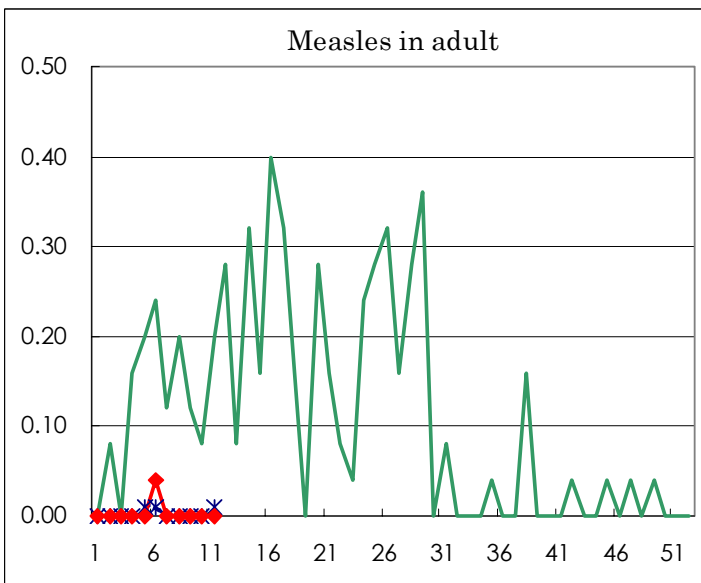
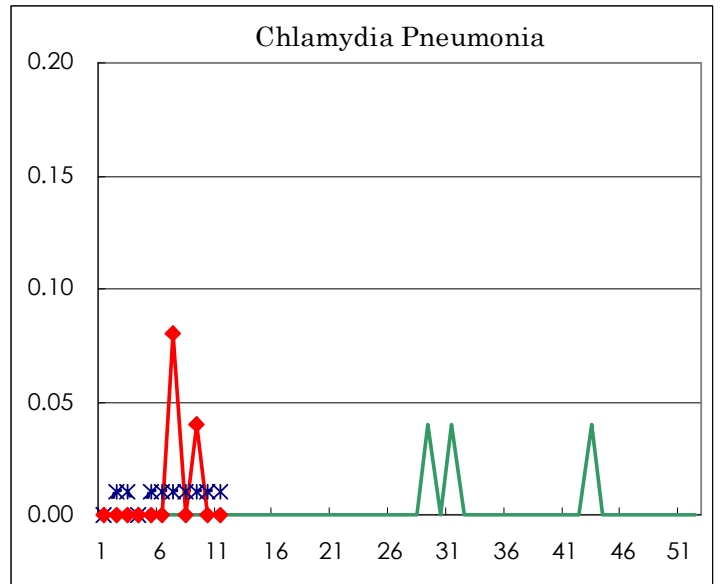
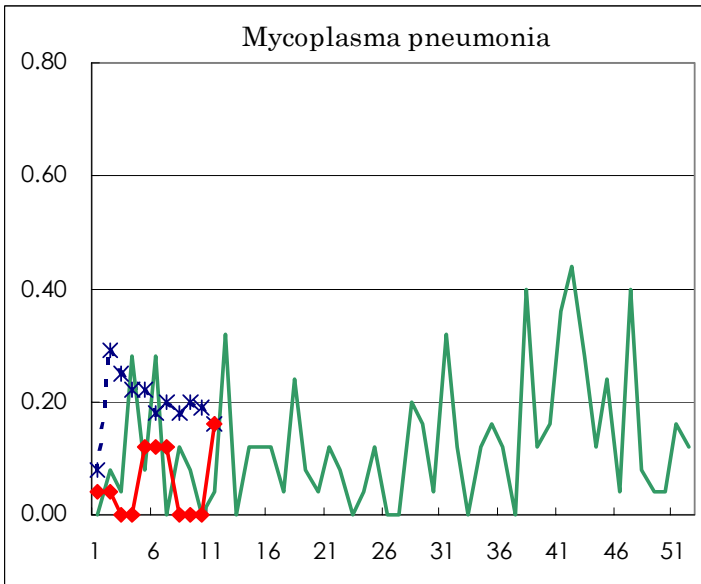
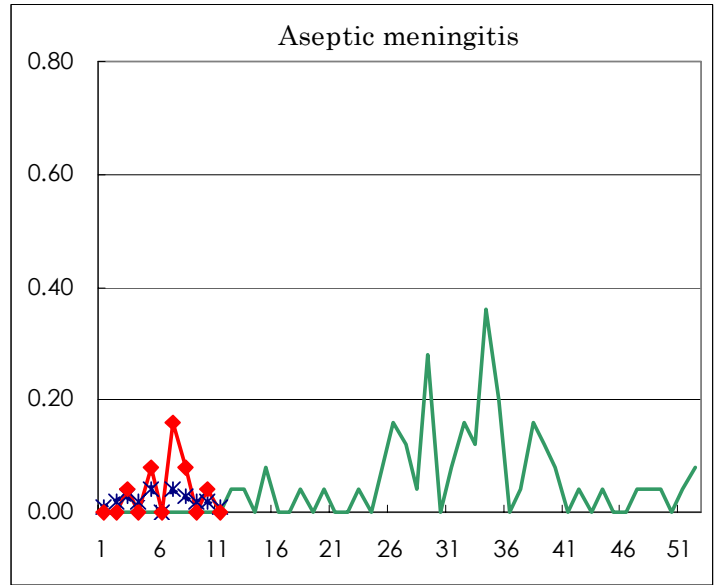
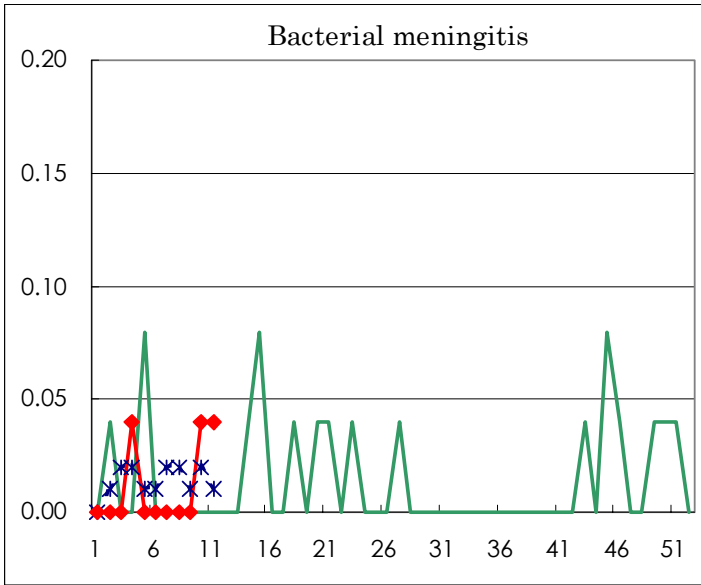
( Blank means 0. )

# Disease Trend Graph (weekly reported cases per fixed-point in comparison)









Tokyo Metropolitan Government  
**Infectious Disease Surveillance Center**