

INFECTIOUS DISEASES WEEKLY REPORT

TOKYO IDWR

Tokyo Metropolitan Institute of Public Health

11 May 2004 / Number 18

- Number of patients with the diseases required notifying all the cases
- Number of patients with the diseases to be reported by the designated clinics and hospitals
- Disease trend graph (weekly reported cases per fixed-point in comparison)

Surveillance System in Tokyo, Japan

The diseases which all physicians must report

All physicians must report to health centers the incidence of the diseases which are shown at page one. Health centers electronically report the individual case to Tokyo Metropolitan Infectious Disease Surveillance Center.

Fixed-point surveillance

The numbers of patients who visit designated clinics or hospitals during a week are reported to health centers (There are 37 in Tokyo). And they electronically report the numbers to Tokyo Metropolitan Infectious Disease Surveillance Center. We have about 200 fixed points (clinics and hospitals) in Tokyo.

1st Week is early January and 52nd Week is end of December.

Tokyo Metropolitan Infectious Disease Surveillance Center
Tokyo Metropolitan Institute of Public Health

TEL:81-3-3363-3213 FAX:81-3-5332-7365

e-mail: idsc@tokyo-eiken.go.jp

URL: idsc.tokyo-eiken.go.jp/

Number of patients with the diseases which all physicians must report

Category	Diseases	Tokyo				Japan		
		15th	16th	17th	18th	Total	18th	Total
I	Ebola hemorrhagic fever							
	Crimean-Congo hemorrhagic fever							
	Severe acute respiratory syndrome							
	Smallpox							
	Plague							
	Marburg disease							
	Lassa fever							
II	Acute poliomyelitis							
	Cholera					1		7
	Shigellosis	4	3	1	3	39	6	131
	Diphtheria							
	Typhoid fever			1	6	8	9	21
	Paratyphoid fever		1			2	2	18
III	Enterohemorrhagic <i>Escherichia coli</i> infection	1	1	3	11	34	38	245
IV	Hepatitis E							(7)
	West Nile fever							
	Hepatitis A				2	11		(52)
	Echinococcosis							12
	Yellow fever							
	Psittacosis							11
	Relapsing fever							
	Q fever							2
	Rabies							
	High pathogenic avian influenza							
	Coccidioidomycosis							1
	Monkeypox							
	Hemorrhagic fever with renal syndrome							
	Anthrax							
	Scrub typhus (Tsutsugamushi disease)					5	1	61
	Dengue fever				1	4	1	6
	Nipah virus infection							
	Japanese spotted fever							2
	Japanese encephalitis							1
	Hantavirus pulmonary syndrome							
	B virus disease							
	Brucellosis							
	Epidemic typhus							
Botulism								
Malaria					6		16	
Tularemia								
Lyme disease							2	
Lyssavirus infection								
Legionellosis					2		31	
Leptospirosis					1		(1)	
V	Amebiasis	1	5	3	2	51	6	184
	Acute viral hepatitis(excluding Hepatitis A,Hepatitis E)				5	13	3	97
	Acute encephalitis		1			2		(19)
	Cryptosporidiosis					1		1
	Creutzfeldt-Jakob Disease			1	1	4	2	56
	Sever invasive streptococcal infections					4	2	21
	Acquired immunodeficiency syndrome	12	13	11	4	138	11	314
	Giardiasis			1		8		24
	Meningococcal meningitis					2	1	11
	Congenital rubella syndrome					1		3
	Syphilis	1	2	1	2	23	4	155
	Tetanus					1	1	17
	Vancomycin-resistant <i>Staphylococcus aureus</i> infection							
	Vancomycin-resistant <i>enterococcus</i> infection		1	1		3		18

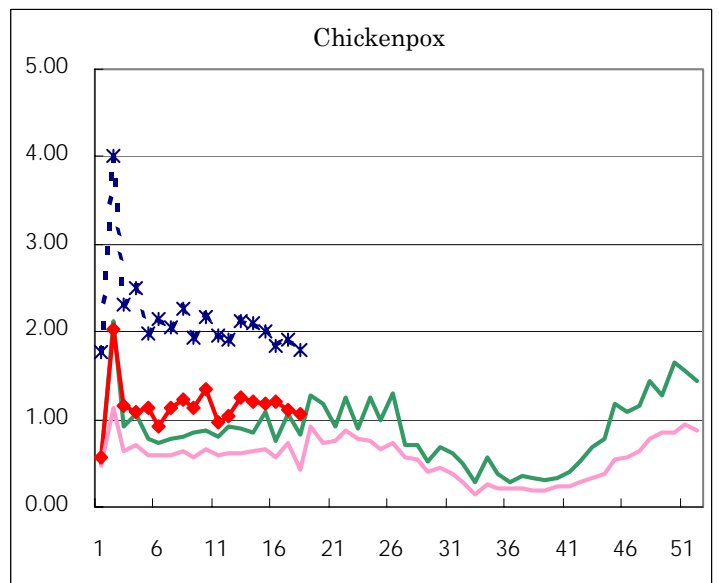
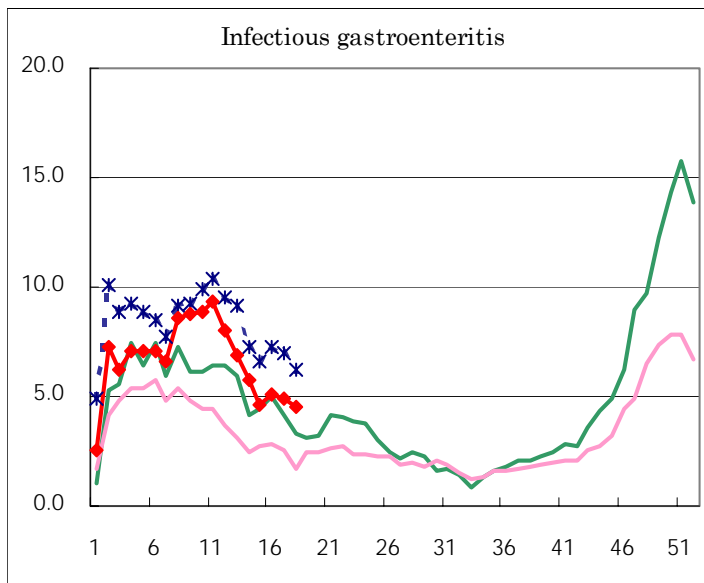
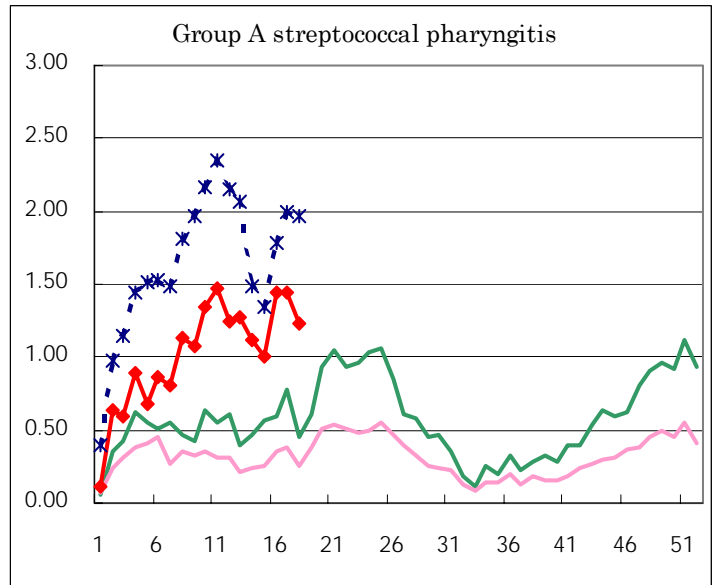
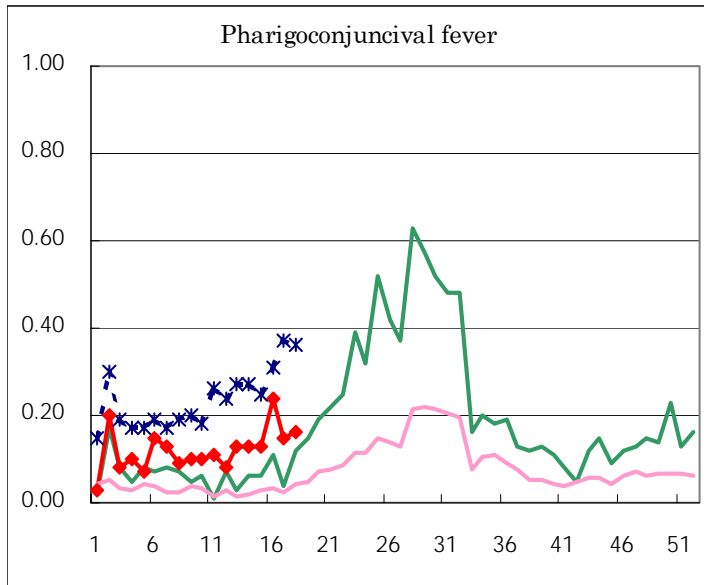
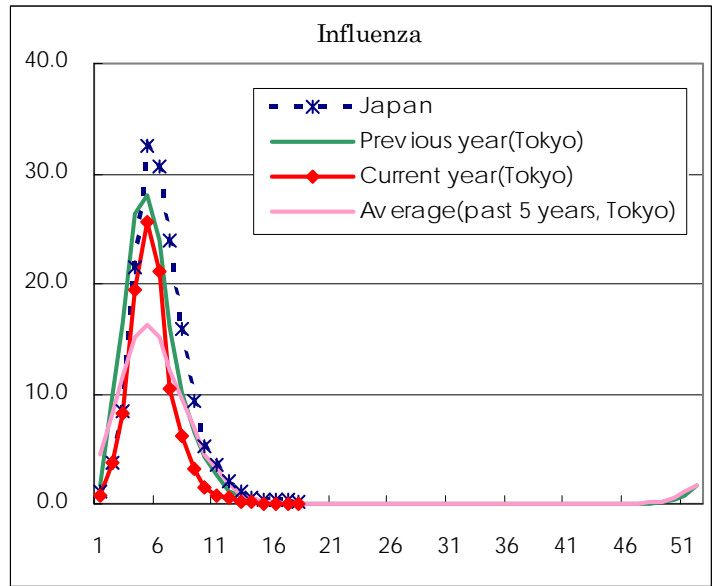
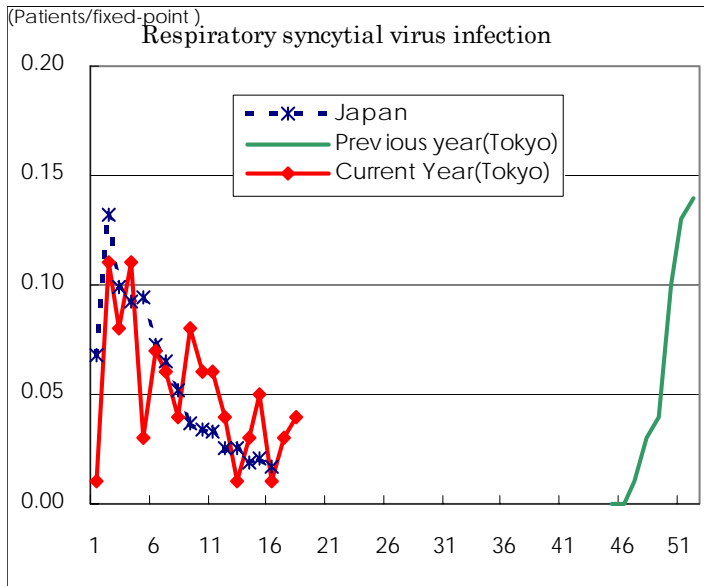
(Blank means 0.)

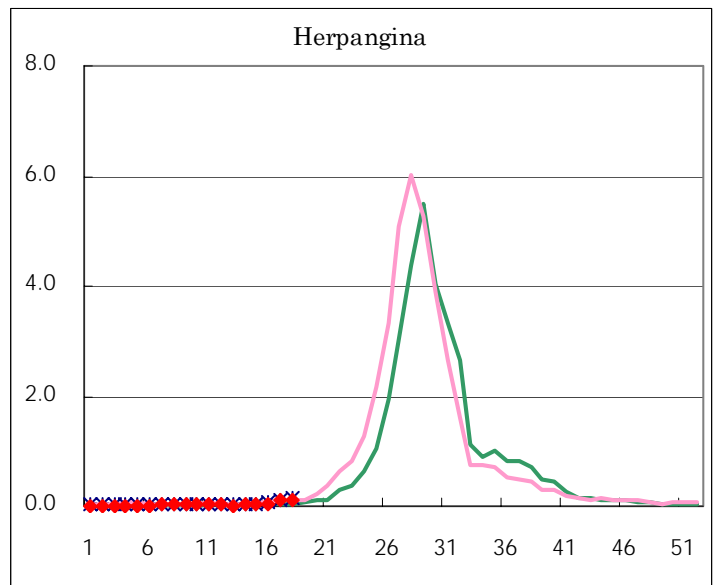
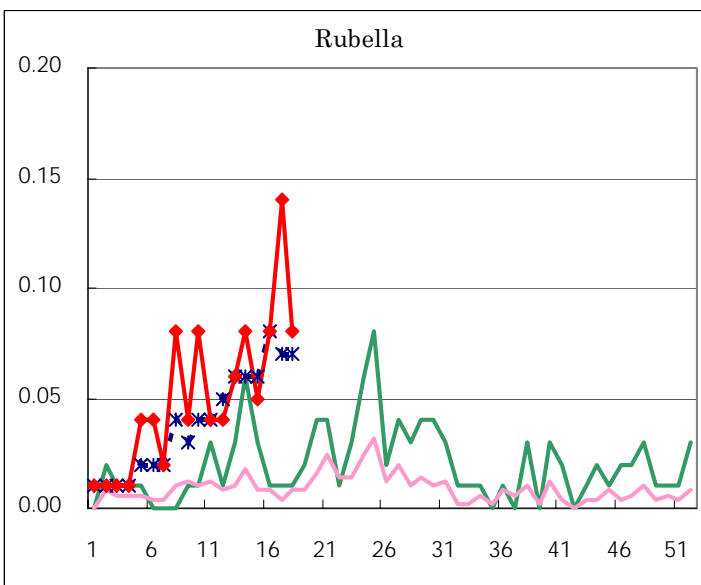
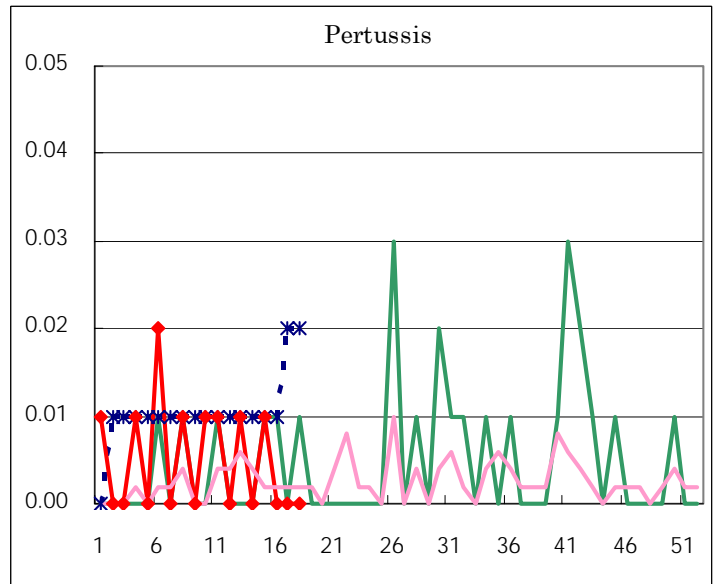
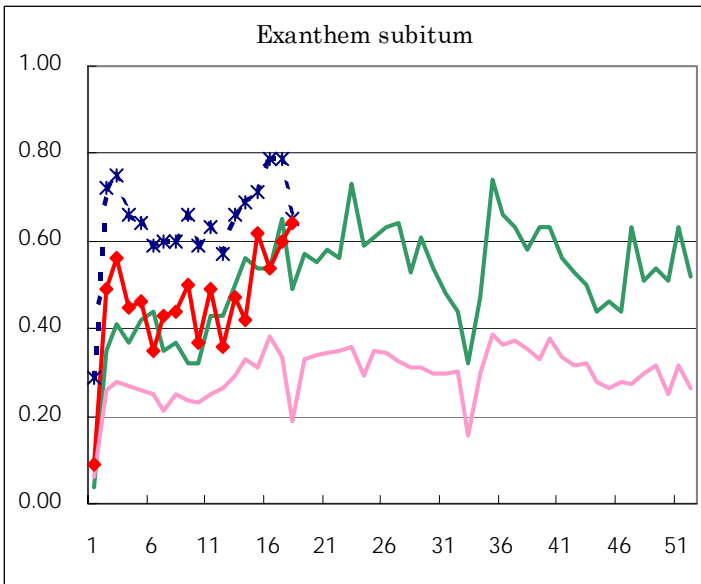
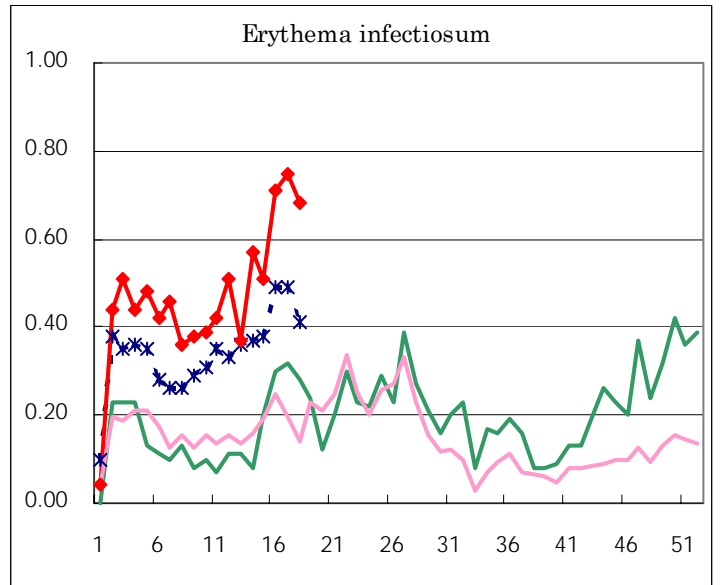
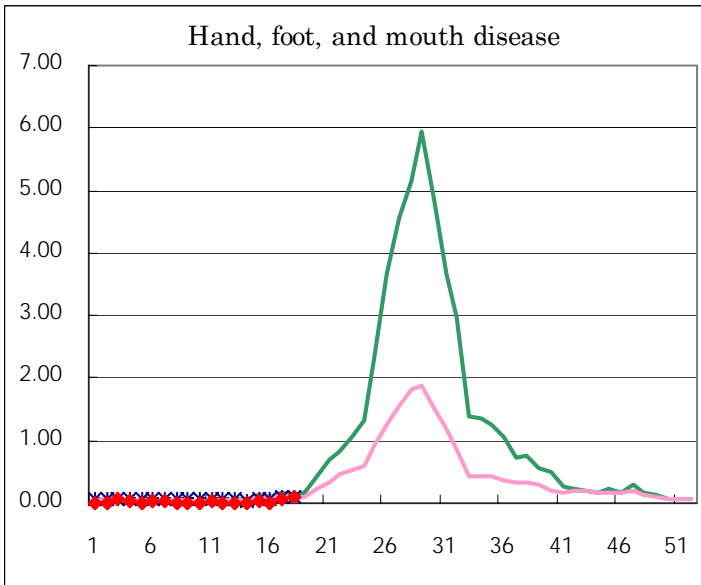
Number of patients with the diseases to be reported
by the designated clinics and hospitals

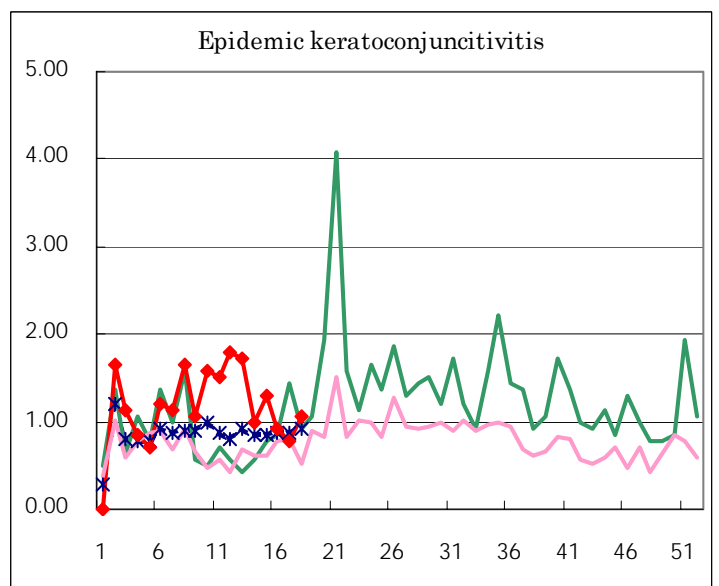
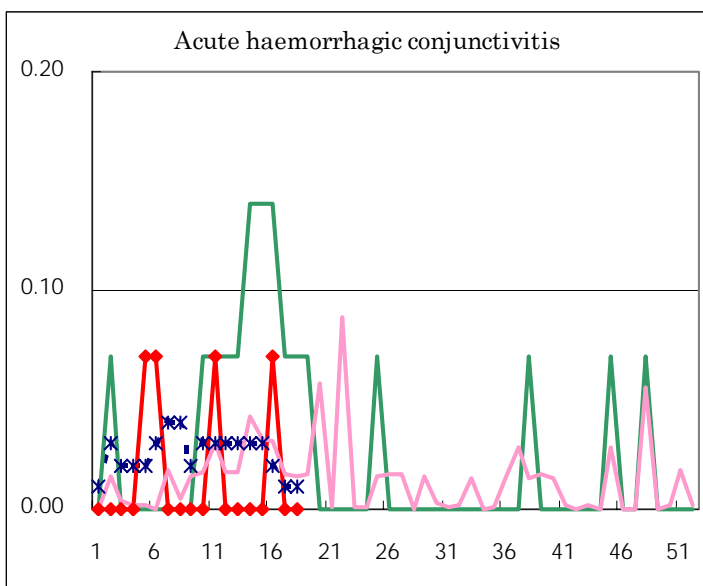
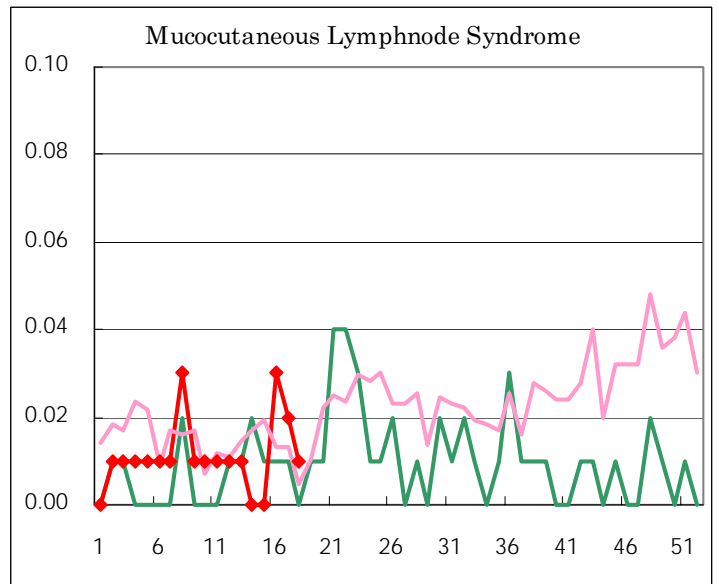
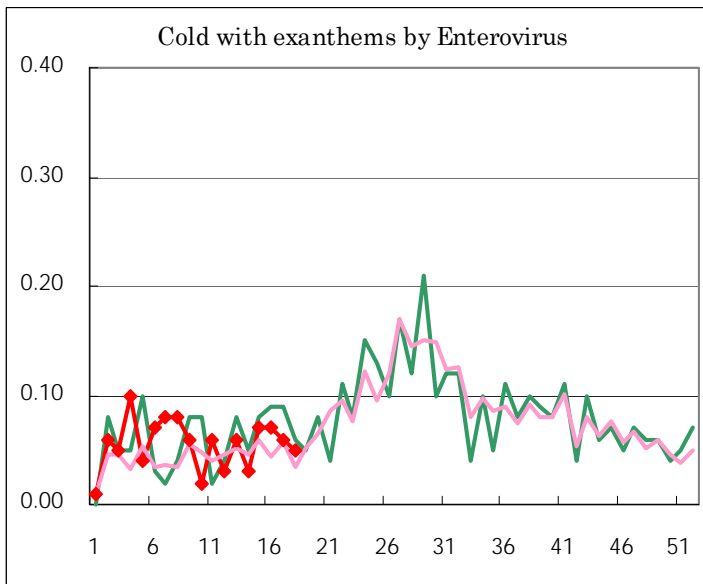
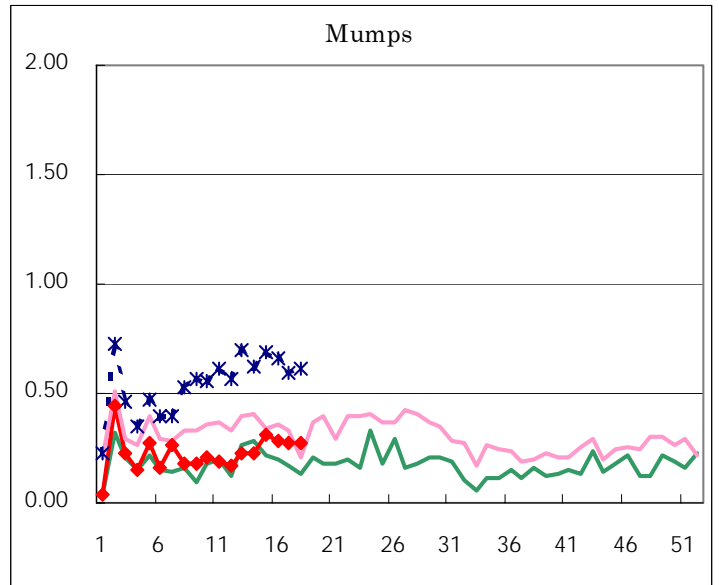
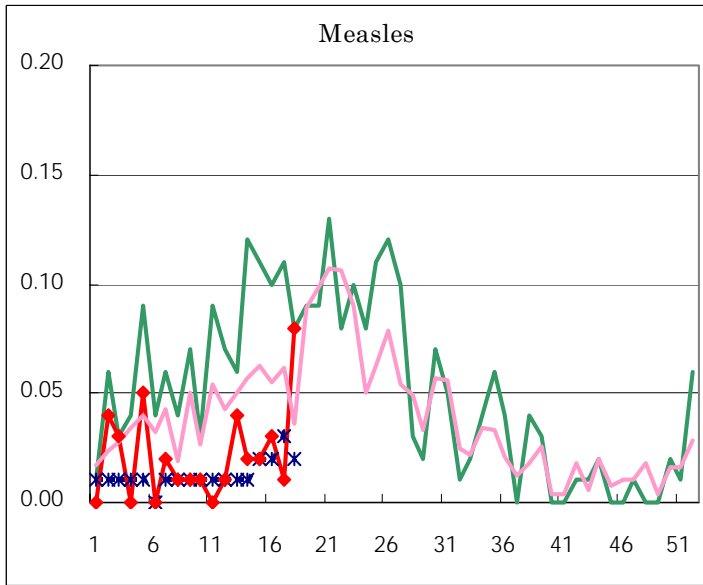
Diseases	Sex	2004				Total
		15th	16th	17th	18th	
Respiratory syncytial virus infection	M	4	1	2	3	10
	F	3		2	3	8
Influenza	M	6	1	4	1	12
	F	4	3	4		11
Pharyngoconjunctival fever	M	10	20	9	15	54
	F	9	14	13	8	44
Group A streptococcal pharyngitis	M	80	86	97	97	360
	F	62	118	107	78	365
Infectious gastroenteritis	M	340	374	353	342	1,409
	F	315	348	349	306	1,318
Chickenpox	M	77	88	80	90	335
	F	91	84	77	59	311
Hand, foot, and mouth disease	M	2	1	6	7	16
	F	2	1	3	6	12
Erythema infectiosum	M	32	53	39	41	165
	F	41	48	68	55	212
Exanthem subitum	M	46	36	46	47	175
	F	42	41	39	44	166
Pertussis	M	1				1
	F					
Rubella	M	4	5	13	6	28
	F	3	6	7	6	22
Herpangina	M	1	3	6	8	18
	F	3	3	8	11	25
Measles	M	1	2	1	2	6
	F	2	2		9	13
Mumps	M	27	19	25	26	97
	F	17	21	13	13	64
Cold with exanthems by Enterovirus	M	6	4	3	5	18
	F	4	6	6	2	18
Mucocutaneous Lymphnode Syndrome	M		3		1	4
	F		1	3		4
Acute hemorrhagic conjunctivitis	M					
	F		1			1
Epidemic keratoconjunctivitis	M	10	6	5	8	29
	F	8	7	6	7	28
Bacterial meningitis	M	1				1
	F					
Aseptic meningitis	M					
	F	1				1
Mycoplasma pneumonia	M	3		1		4
	F	2	2	3	1	8
Chlamydial pneumonia (excluding psittacosis)	M					
	F					
Measles in adults	M		1			1
	F				1	1

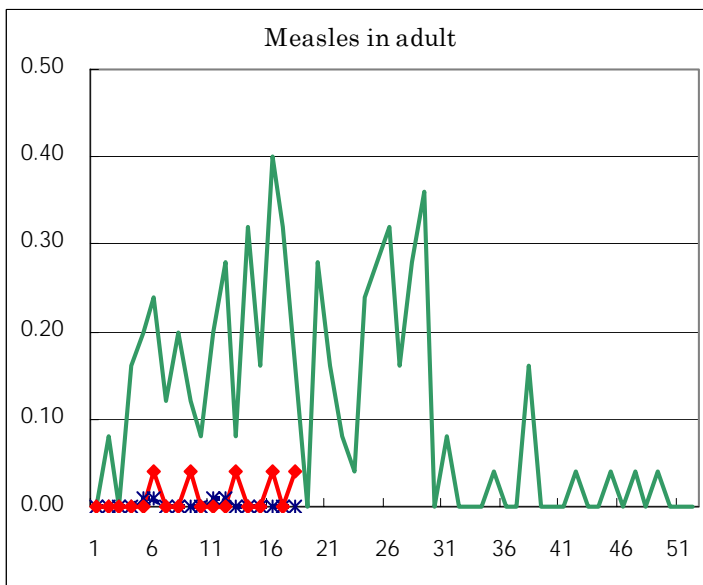
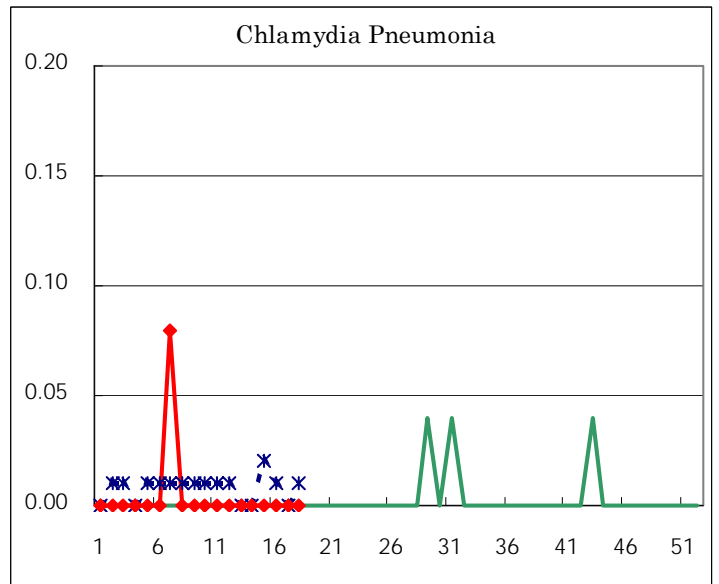
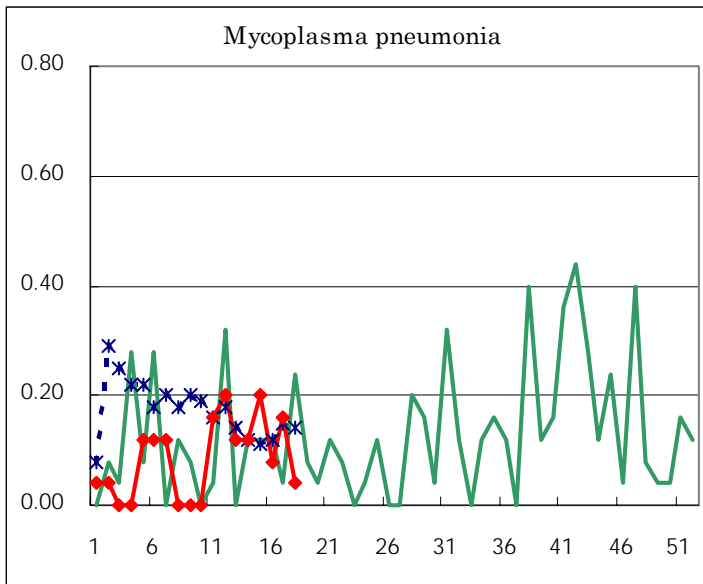
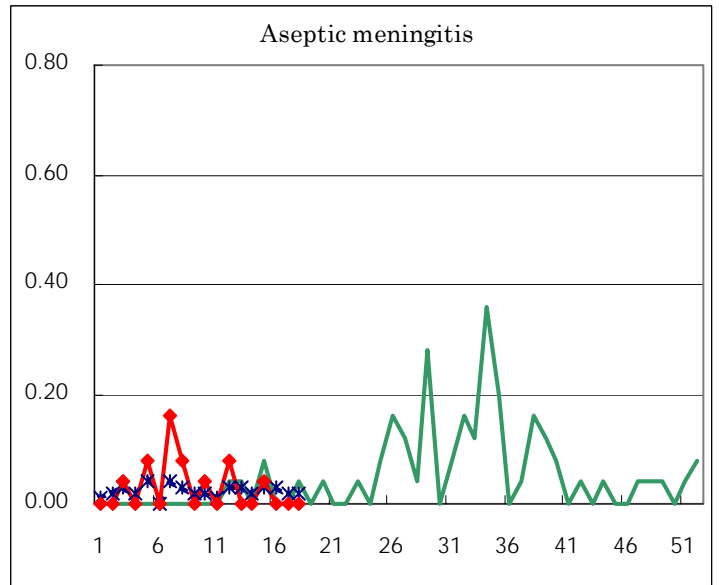
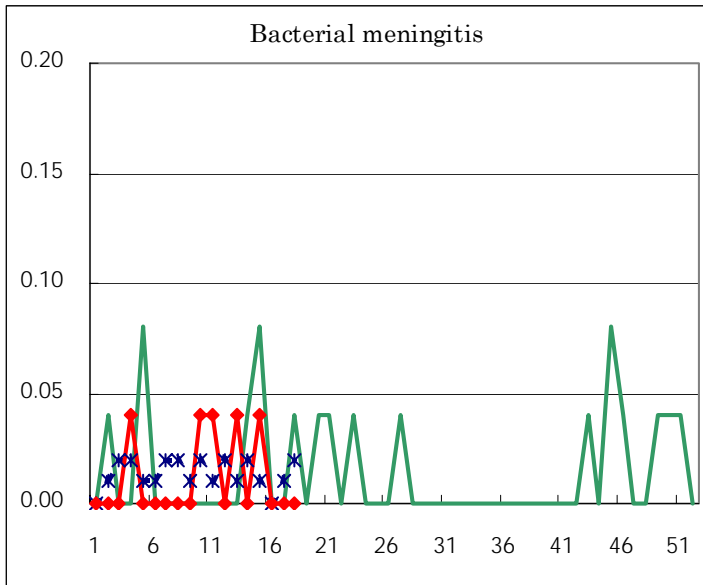
(Blank means 0.)

Disease Trend Graph (weekly reported cases per fixed-point in comparison)









Tokyo Metropolitan Government
Infectious Disease Surveillance Center