

INFECTIOUS DISEASES WEEKLY REPORT

# TOKYO IDWR

Tokyo Metropolitan Institute of Public Health

2 November 2004 / Number 43

- Number of patients with the diseases required notifying all the cases
- Number of patients with the diseases to be reported by the designated clinics and hospitals
- Disease trend graph (weekly reported cases per fixed-point in comparison)

## Surveillance System in Tokyo, Japan

### The diseases which all physicians must report

All physicians must report to health centers the incidence of the diseases which are shown at page one. Health centers electronically report the individual case to Tokyo Metropolitan Infectious Disease Surveillance Center.

### Fixed-point surveillance

The numbers of patients who visit designated clinics or hospitals during a week are reported to health centers ( There are 37 in Tokyo). And they electronically report the numbers to Tokyo Metropolitan Infectious Disease Surveillance Center. We have about 200 fixed points (clinics and hospitals) in Tokyo.

1<sup>st</sup> Week is early January and 52<sup>nd</sup> Week is end of December.

Tokyo Metropolitan Infectious Disease Surveillance Center  
Tokyo Metropolitan Institute of Public Health

TEL:81-3-3363-3213 FAX:81-3-5332-7365  
e-mail: [idsc@tokyo-eiken.go.jp](mailto:idsc@tokyo-eiken.go.jp)  
URL: [idsc.tokyo-eiken.go.jp/](http://idsc.tokyo-eiken.go.jp/)

## Number of patients with the diseases which all physicians must report

Category	Diseases	Tokyo				Japan		
		40th	41st	42nd	43rd	Total	43rd	Total
I	Ebola hemorrhagic fever							
	Crimean-Congo hemorrhagic fever							
	Severe acute respiratory syndrome							
	Smallpox							
	Plague							
	Marburg disease							
	Lassa fever							
II	Acute poliomyelitis							
	Cholera		1			10	1	73
	Shigellosis	4	4	4	4	113	7	500
	Diphtheria							
	Typhoid fever			1		14	3	59
	Paratyphoid fever		1			15	3	74
III	Enterohemorrhagic <i>Escherichia coli</i> infection	5	9	3	4	248	46	3304
IV	Hepatitis E	1				4		(26)
	West Nile fever							
	Hepatitis A		1	1	1	21	(1)	(118)
	Echinococcosis							23
	Yellow fever							
	Psittacosis					3		37
	Relapsing fever							
	Q fever					1		7
	Rabies							
	High pathogenic avian influenza							
	Coccidioidomycosis			1		1		6
	Monkeypox							
	Hemorrhagic fever with renal syndrome							
	Anthrax							
	Scrub typhus (Tsutsugamushi disease)		1			6	3	106
	Dengue fever			1	1	24	2	40
	Nipah virus infection							
	Japanese spotted fever						2	57
	Japanese encephalitis							5
	Hantavirus pulmonary syndrome							
	B virus disease							
	Brucellosis							
Epidemic typhus								
Botulism								
Malaria					18		61	
Tularemia								
Lyme disease							3	
Lyssavirus infection								
Legionellosis	1		2		16	1	118	
Leptospirosis					3	(3)	(10)	
V	Amebiasis	4	5	2	2	115	4	479
	Acute viral hepatitis(excluding Hepatitis A,Hepatitis E)		2	2	2	50	4	242
	Acute encephalitis			1	1	7	(3)	(65)
	Cryptosporidiosis			1		8	1	91
	Creutzfeldt-Jakob Disease			2	1	17	3	136
	Sever invasive streptococcal infections					5	1	48
	Acquired immunodeficiency syndrome	9	3	5	8	348	21	930
	Giardiasis					17		70
	Meningococcal meningitis		1			6		20
	Congenital rubella syndrome					3		8
	Syphilis		4	1	1	55	5	414
	Tetanus			1		2		82
	Vancomycin-resistant <i>Staphylococcus aureus</i> infection							
	Vancomycin-resistant <i>enterococcus</i> infection					9	1	42

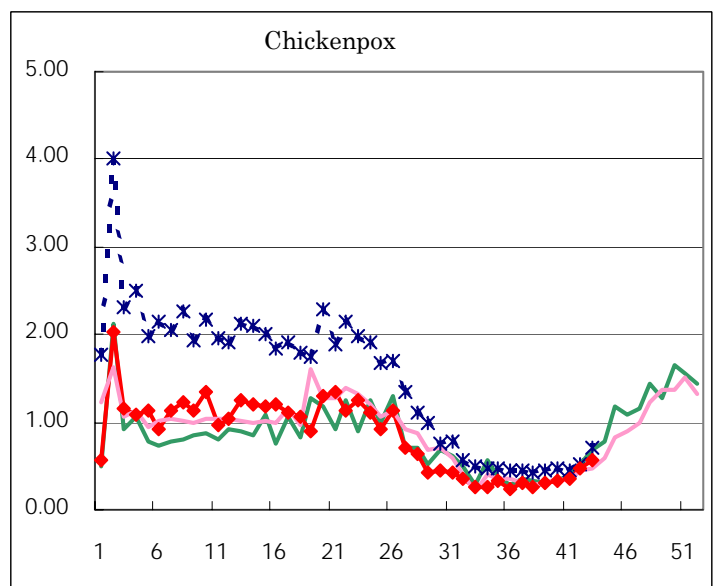
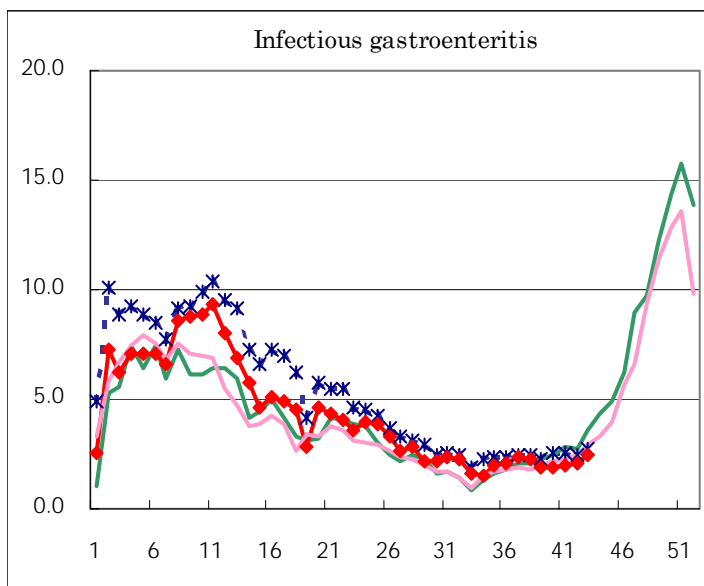
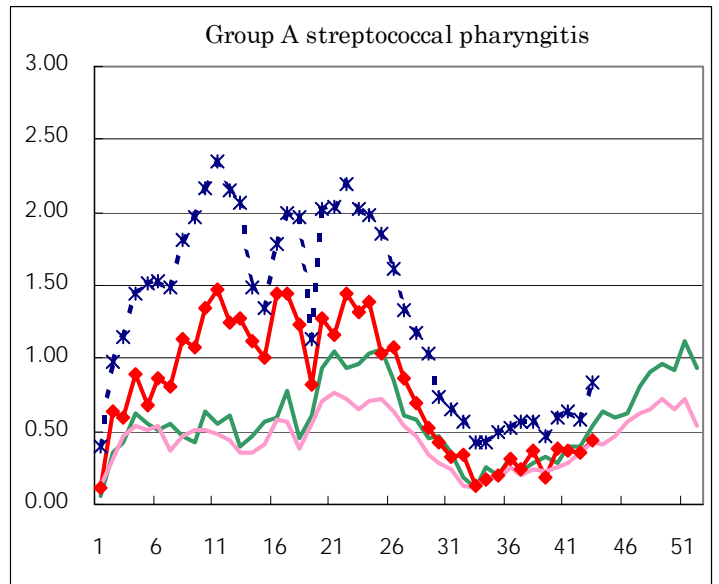
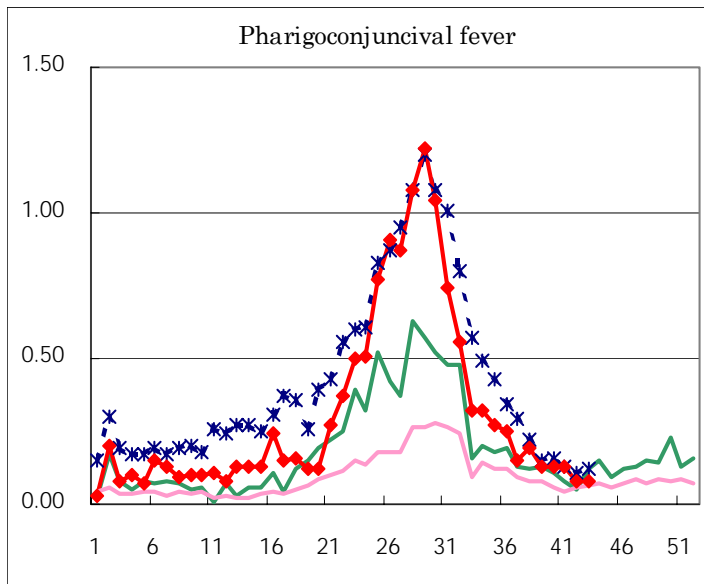
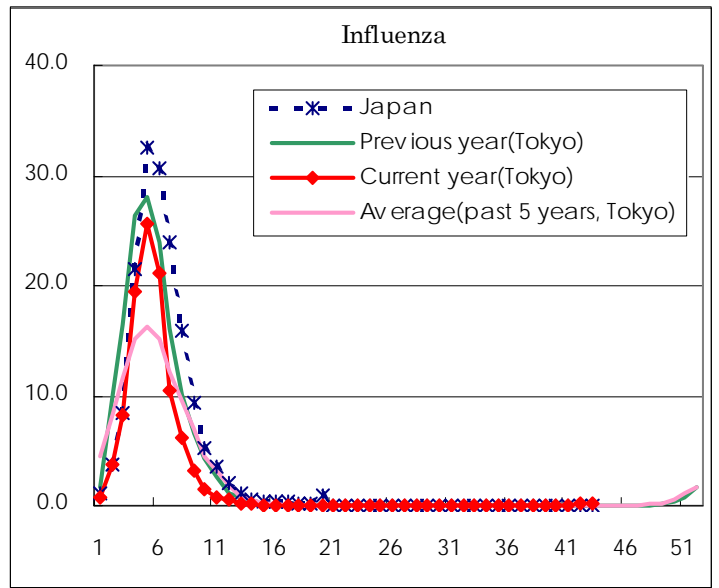
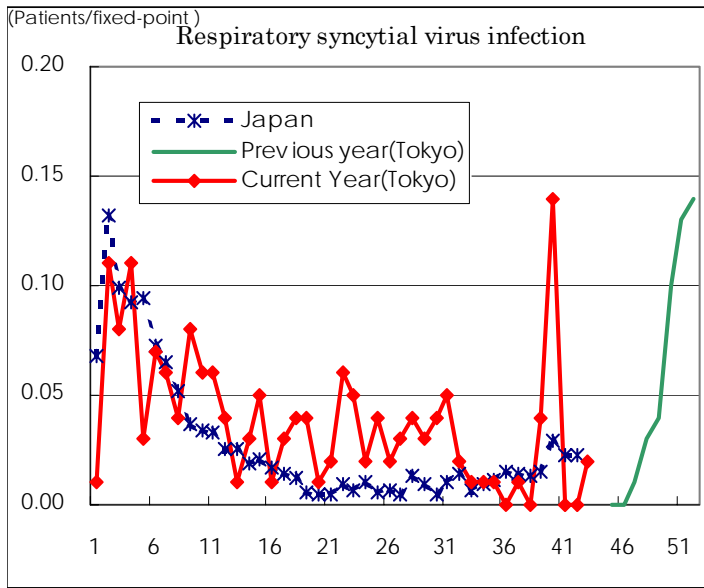
( Blank means 0. )

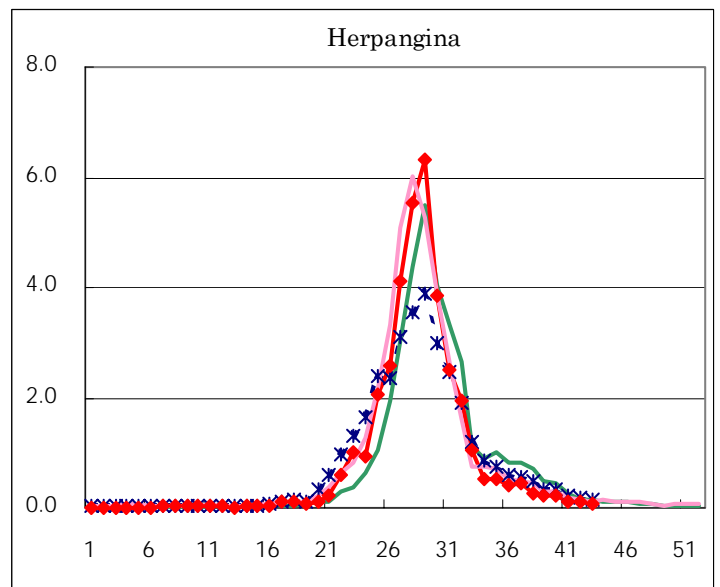
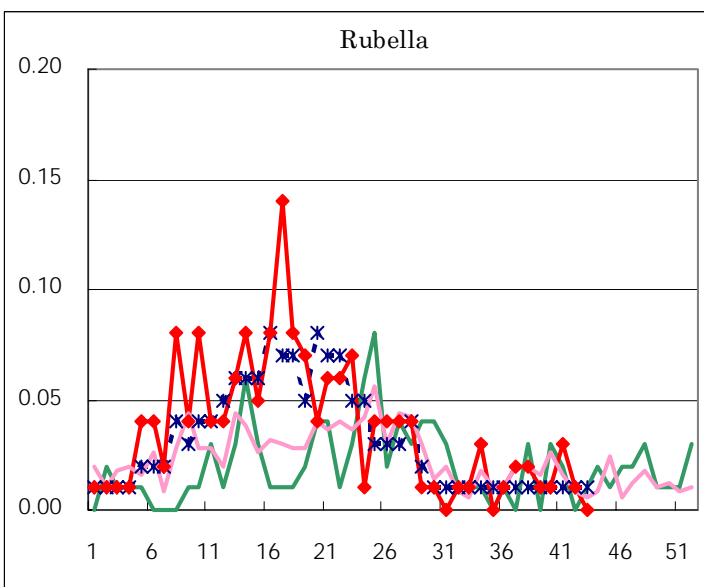
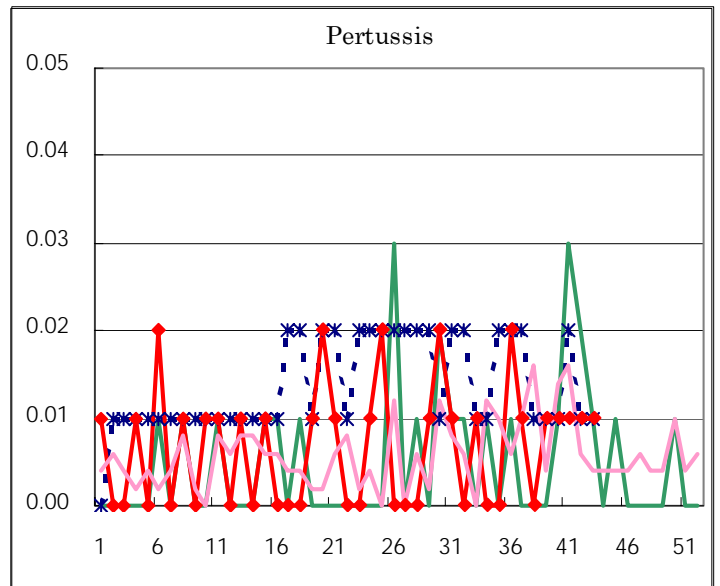
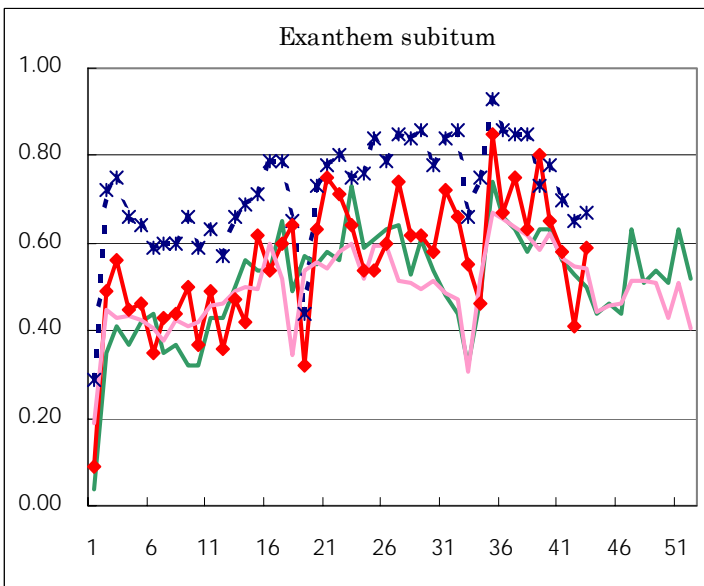
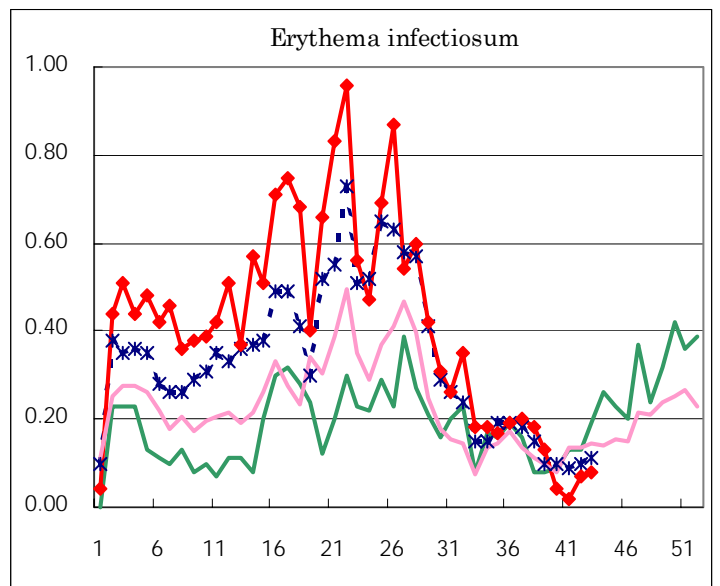
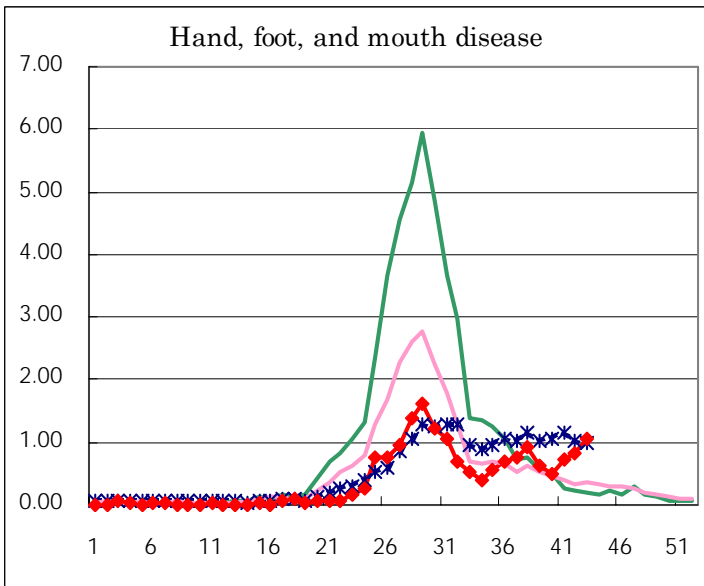
Number of patients with the diseases to be reported  
by the designated clinics and hospitals

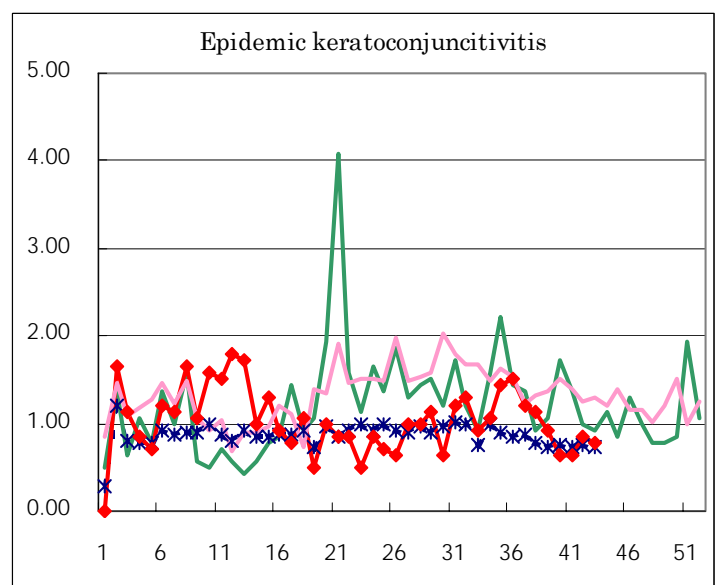
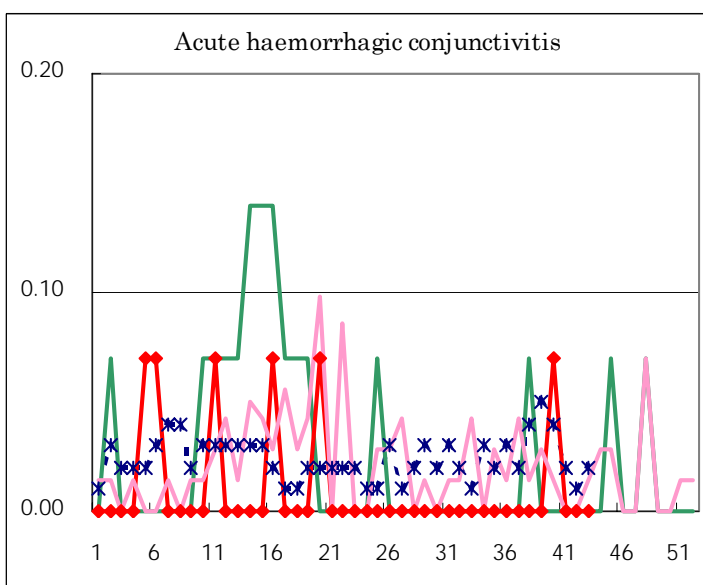
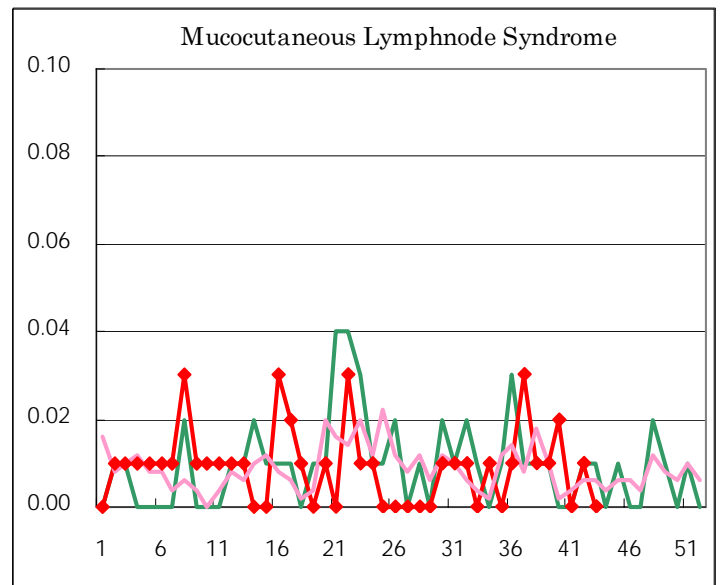
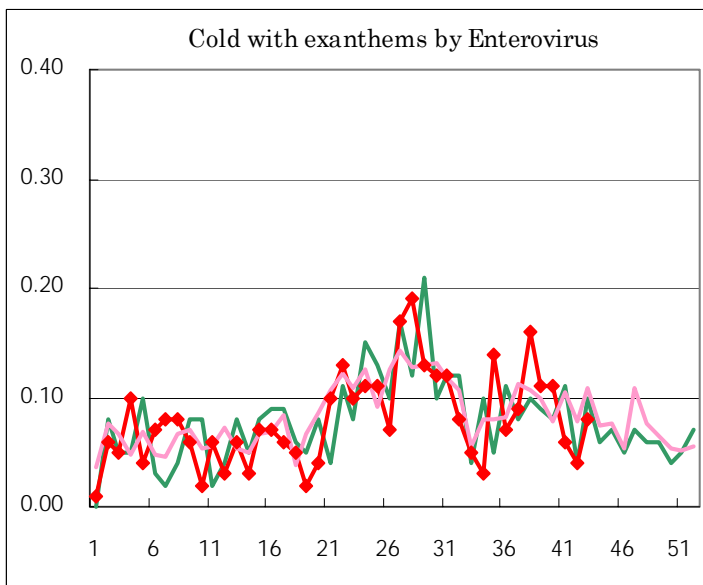
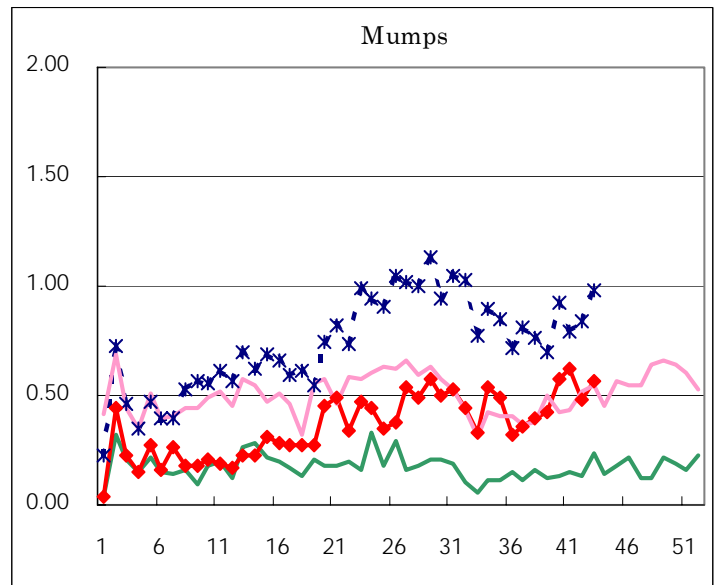
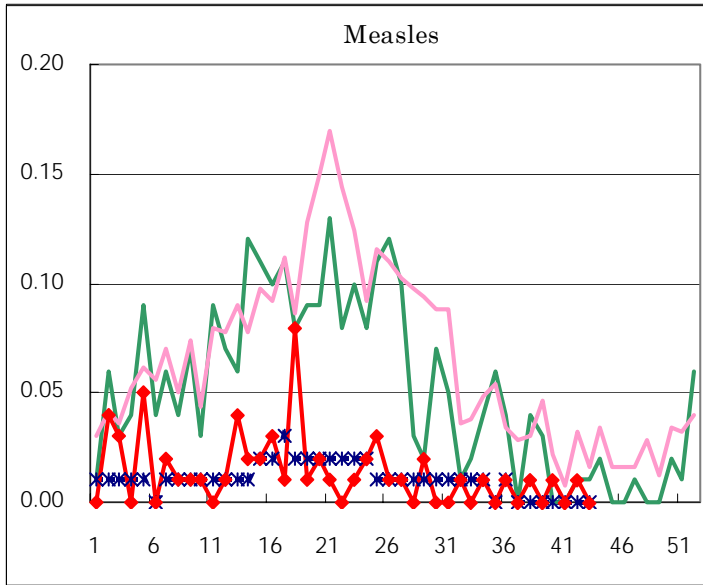
Diseases	Sex	2004				Total
		40th	41st	42nd	43rd	
Respiratory syncytial virus infection	M	10			1	11
	F	10			2	12
Influenza	M		3	13	13	29
	F		2	17	11	30
Pharyngoconjunctival fever	M	8	9	6	7	30
	F	11	10	5	5	31
Group A streptococcal pharyngitis	M	34	28	25	32	119
	F	20	24	25	30	99
Infectious gastroenteritis	M	140	152	173	185	650
	F	131	127	127	157	542
Chickenpox	M	25	24	38	42	129
	F	20	27	29	40	116
Hand, foot, and mouth disease	M	40	48	67	83	238
	F	31	54	52	68	205
Erythema infectiosum	M	5	2	6	6	19
	F	1	1	4	7	13
Exanthem subitum	M	55	40	26	38	159
	F	37	42	32	46	157
Pertussis	M		1	1	1	3
	F	2				2
Rubella	M		3	1		4
	F	1	1			2
Herpangina	M	15	12	7	7	41
	F	16	7	11	5	39
Measles	M	1		1		2
	F			1		1
Mumps	M	45	60	43	43	191
	F	38	28	25	38	129
Cold with exanthems by Enterovirus	M	13	3	5	5	26
	F	3	5	1	7	16
Mucocutaneous Lymphnode Syndrome	M	2				2
	F	1		2		3
Acute hemorrhagic conjunctivitis	M	1				1
	F					
Epidemic keratoconjunctivitis	M	7	6	5	5	23
	F	2	3	7	6	18
Bacterial meningitis	M	1				1
	F					
Aseptic meningitis	M	1	1			2
	F			1		1
Mycoplasma pneumonia	M			2	4	6
	F	3	1		2	6
Chlamydial pneumonia (excluding psittacosis)	M		1			1
	F					
Measles in adults	M					
	F					

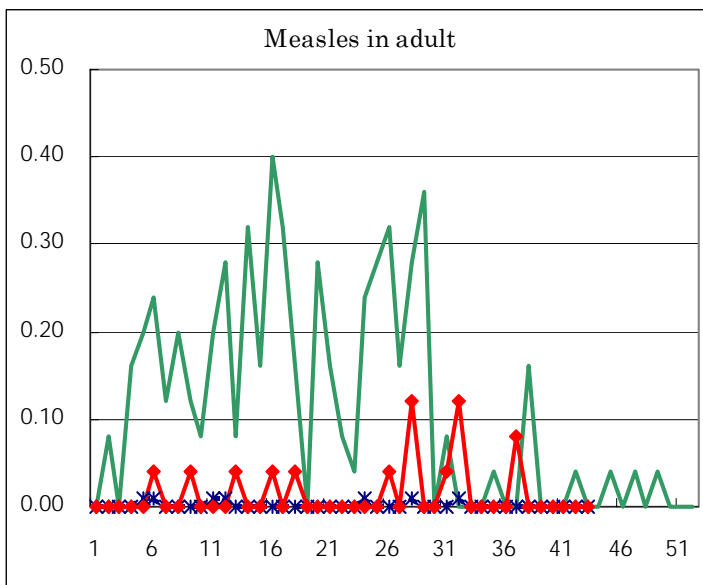
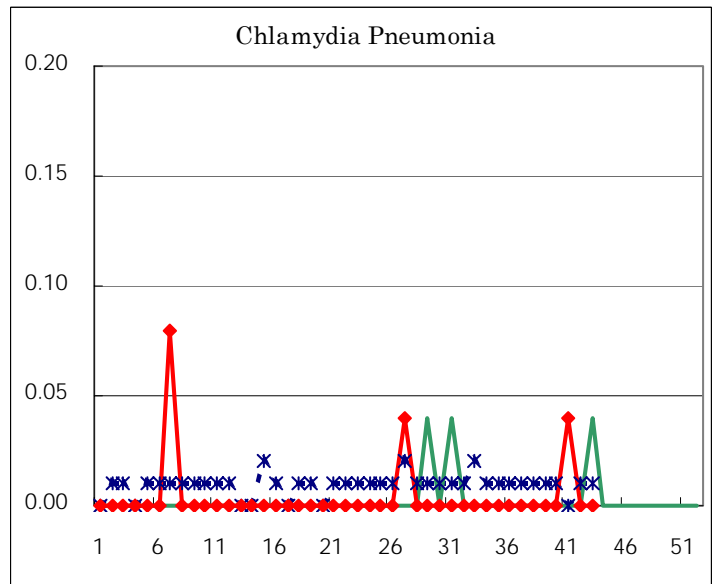
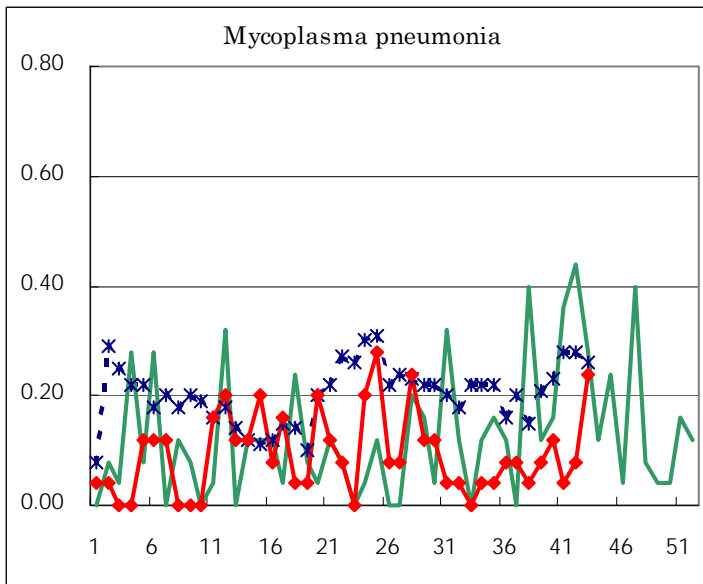
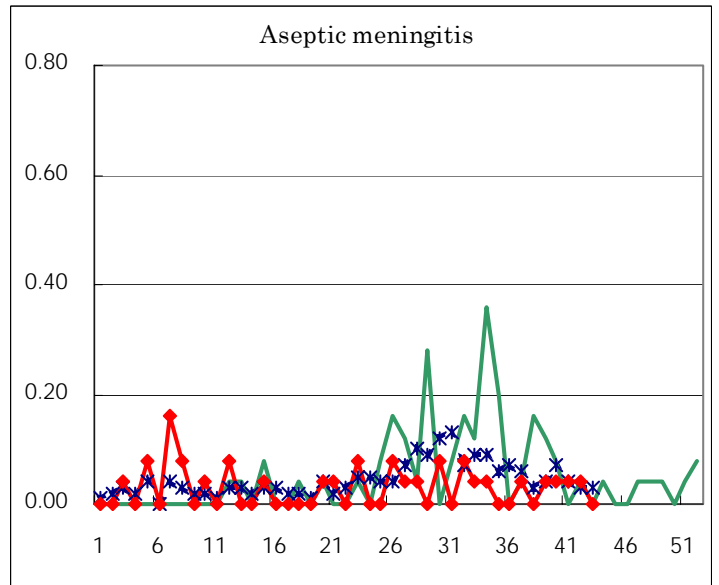
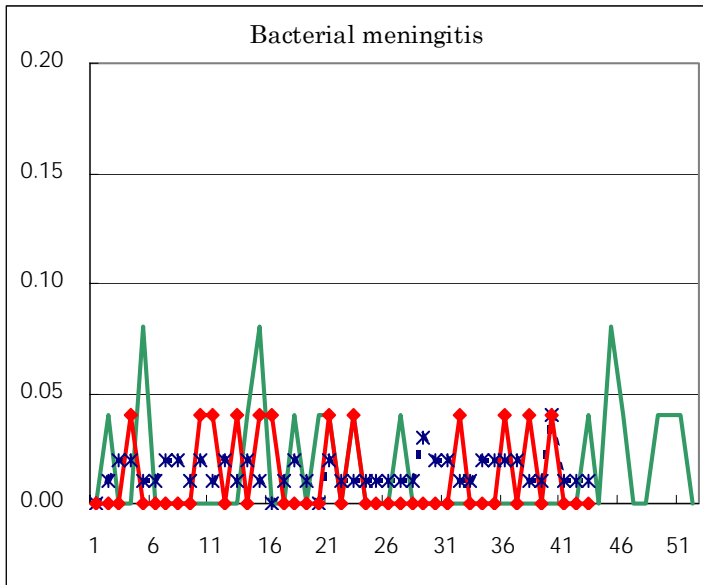
( Blank means 0. )

# Disease Trend Graph (weekly reported cases per fixed-point in comparison)









Tokyo Metropolitan Government  
**Infectious Disease Surveillance Center**