

INFECTIOUS DISEASES WEEKLY REPORT

TOKYO IDWR

Tokyo Metropolitan Institute of Public Health

9 November 2004 / Number 44

- Number of patients with the diseases required notifying all the cases
- Number of patients with the diseases to be reported by the designated clinics and hospitals
- Disease trend graph (weekly reported cases per fixed-point in comparison)

Surveillance System in Tokyo, Japan

The diseases which all physicians must report

All physicians must report to health centers the incidence of the diseases which are shown at page one. Health centers electronically report the individual case to Tokyo Metropolitan Infectious Disease Surveillance Center.

Fixed-point surveillance

The numbers of patients who visit designated clinics or hospitals during a week are reported to health centers (There are 37 in Tokyo). And they electronically report the numbers to Tokyo Metropolitan Infectious Disease Surveillance Center. We have about 200 fixed points (clinics and hospitals) in Tokyo.

1st Week is early January and 52nd Week is end of December.

Tokyo Metropolitan Infectious Disease Surveillance Center
Tokyo Metropolitan Institute of Public Health

TEL:81-3-3363-3213 FAX:81-3-5332-7365
e-mail: idsc@tokyo-eiken.go.jp
URL: idsc.tokyo-eiken.go.jp/

Number of patients with the diseases which all physicians must report

Category	Diseases	Tokyo					Japan	
		41st	42nd	43rd	44th	Total	44th	Total
I	Ebola hemorrhagic fever							
	Crimean-Congo hemorrhagic fever							
	Severe acute respiratory syndrome							
	Smallpox							
	Plague							
	Marburg disease							
	Lassa fever							
II	Acute poliomyelitis							
	Cholera	1			2	12	4	78
	Shigellosis	4	4	4	3	116	5	509
	Diphtheria							
	Typhoid fever		1		1	15	1	60
	Paratyphoid fever	1				15	1	75
III	Enterohemorrhagic <i>Escherichia coli</i> infection	9	3	4	9	257	33	3348
IV	Hepatitis E					4		(26)
	West Nile fever							
	Hepatitis A	1	1	1		21		(121)
	Echinococcosis							23
	Yellow fever							
	Psittacosis					3	2	39
	Relapsing fever							
	Q fever					1		7
	Rabies							
	High pathogenic avian influenza							
	Coccidioidomycosis		1			1		6
	Monkeypox							
	Hemorrhagic fever with renal syndrome							
	Anthrax							
	Scrub typhus (Tsutsugamushi disease)	1				6	3	110
	Dengue fever		1	1	1	25	1	41
	Nipah virus infection							
	Japanese spotted fever							58
	Japanese encephalitis							5
	Hantavirus pulmonary syndrome							
	B virus disease							
Brucellosis								
Epidemic typhus								
Botulism								
Malaria					18		62	
Tularemia								
Lyme disease							4	
Lyssavirus infection								
Legionellosis		2		1	17	2	121	
Leptospirosis					3	(2)	(13)	
V	Amebiasis	5	2	2	3	118	6	492
	Acute viral hepatitis(excluding Hepatitis A,Hepatitis E)	2	2	2	4	54	1	250
	Acute encephalitis		1	1		7	(13)	(95)
	Cryptosporidiosis		1			8		91
	Creutzfeldt-Jakob Disease		2	1		17	2	140
	Sever invasive streptococcal infections					5	1	49
	Acquired immunodeficiency syndrome	3	5	8	4	352	9	955
	Giardiasis					17	3	74
	Meningococcal meningitis	1				6		20
	Congenital rubella syndrome					3		8
	Syphilis	4	1		1	55	4	419
	Tetanus		1			2	1	85
	Vancomycin-resistant <i>Staphylococcus aureus</i> infection							
	Vancomycin-resistant <i>enterococcus</i> infection					9		42

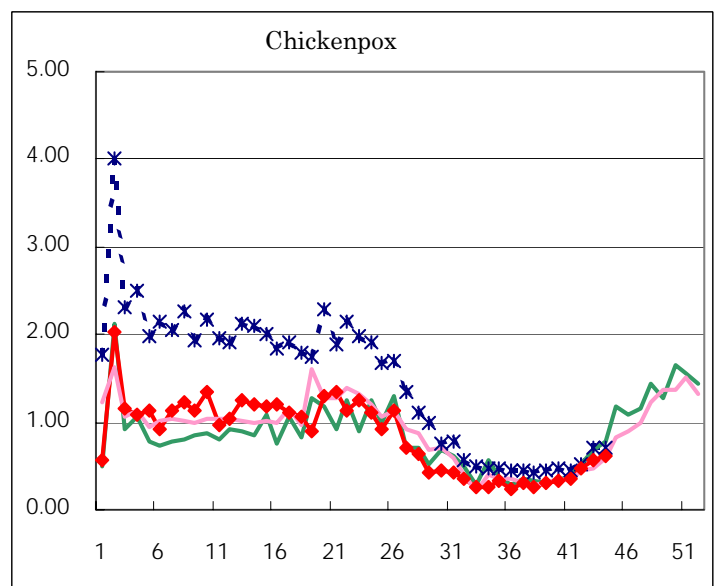
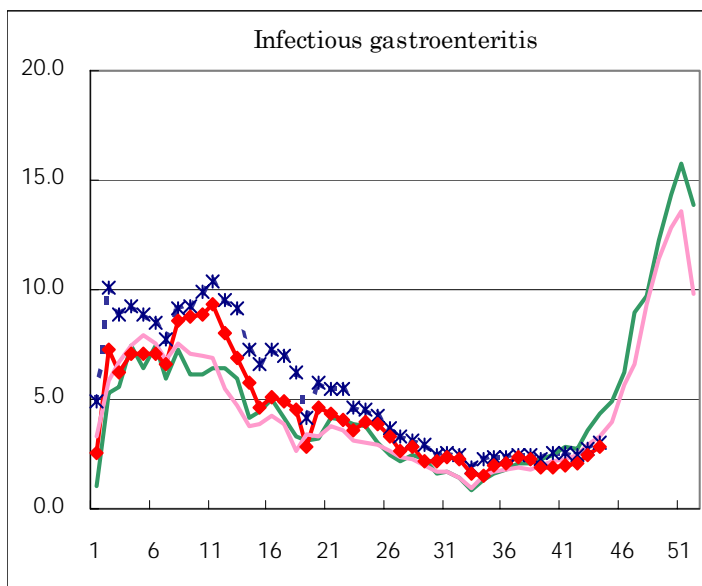
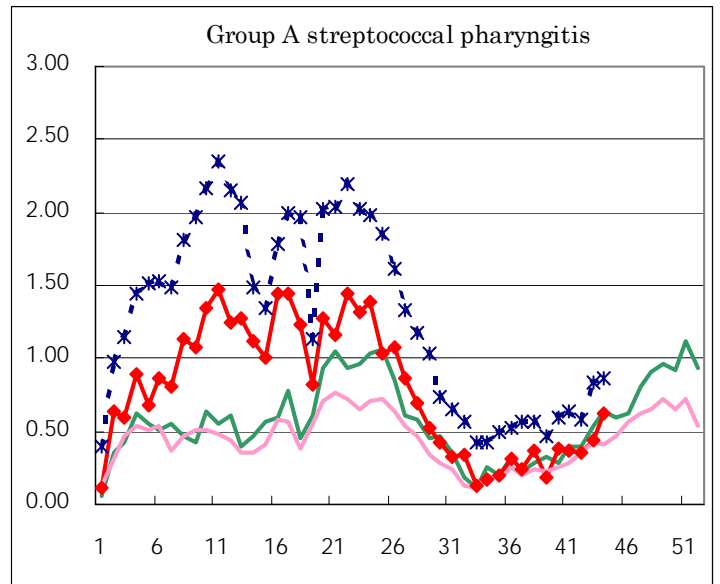
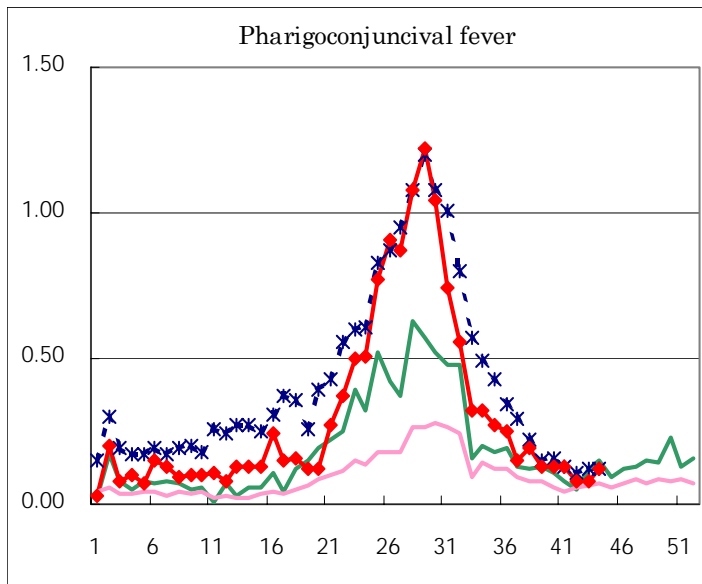
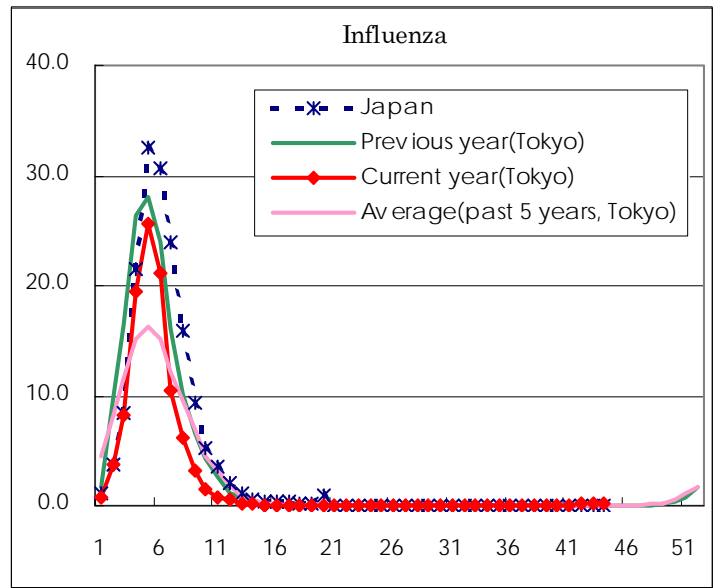
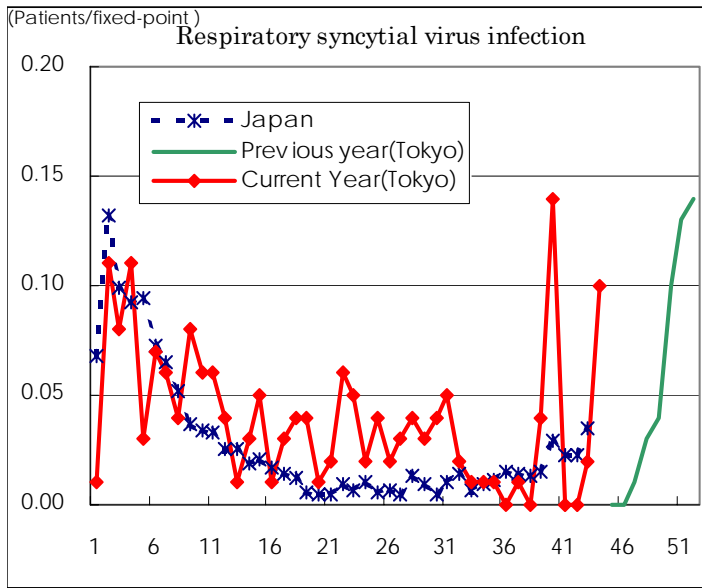
(Blank means 0.)

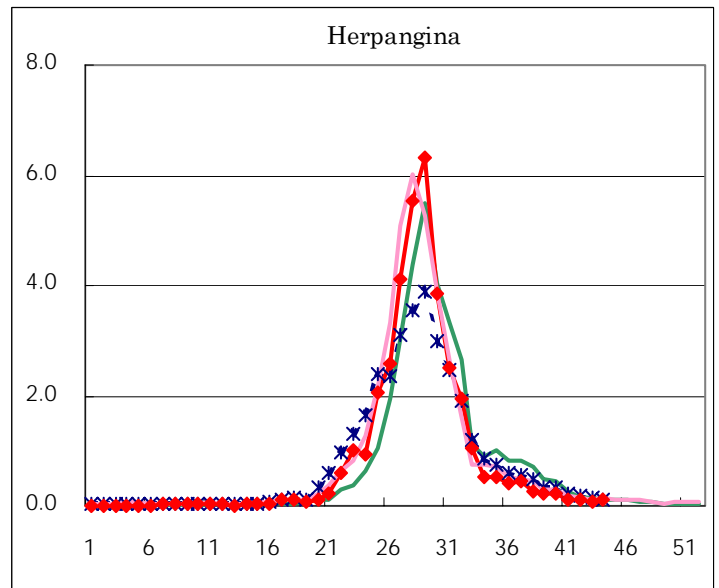
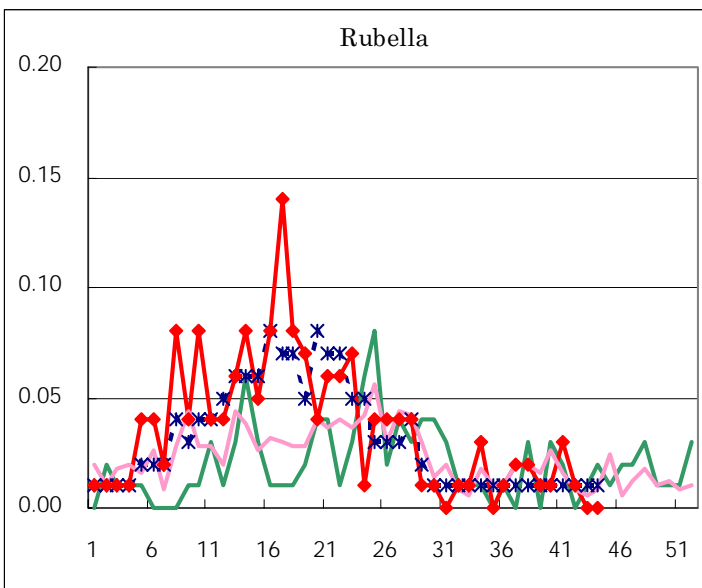
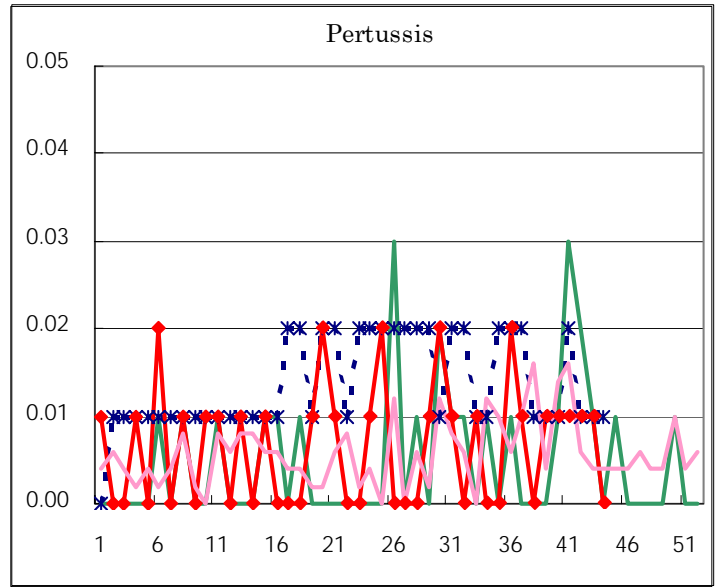
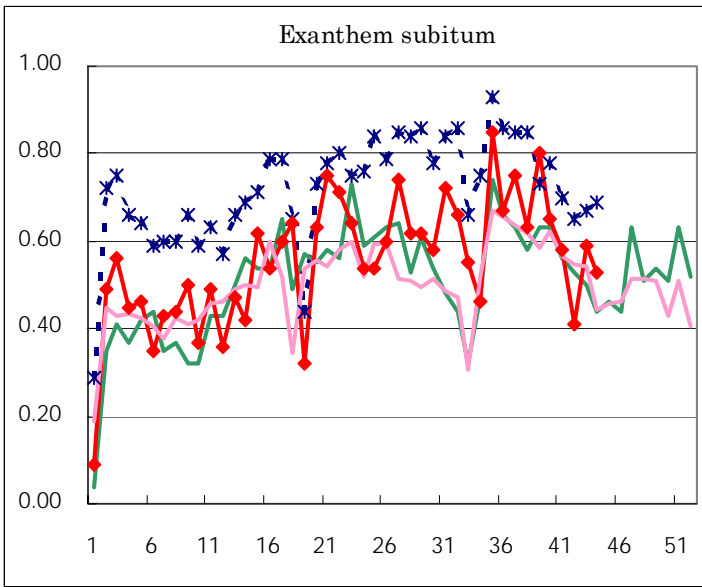
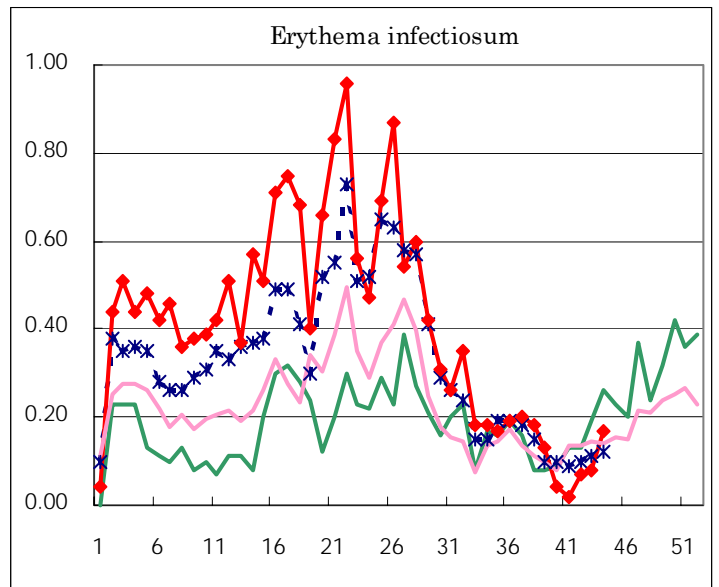
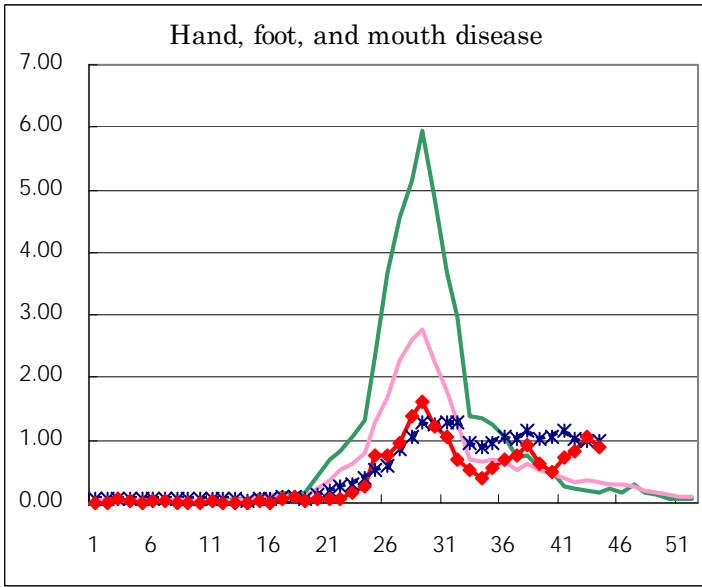
Number of patients with the diseases to be reported
by the designated clinics and hospitals

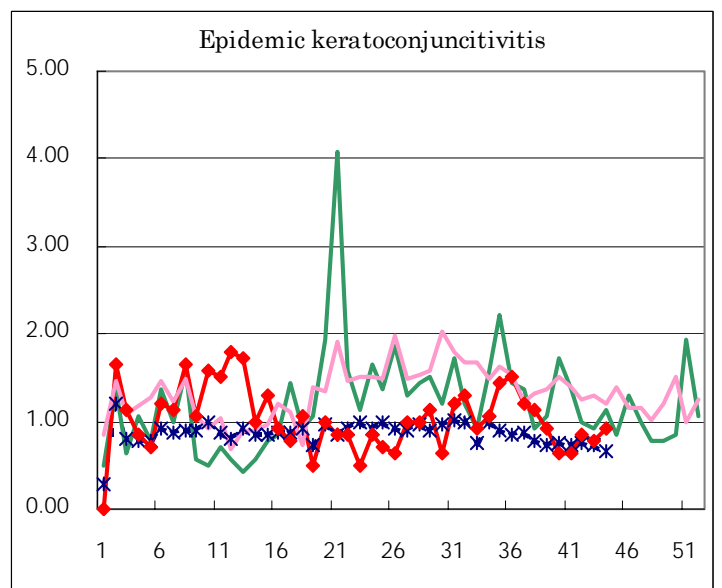
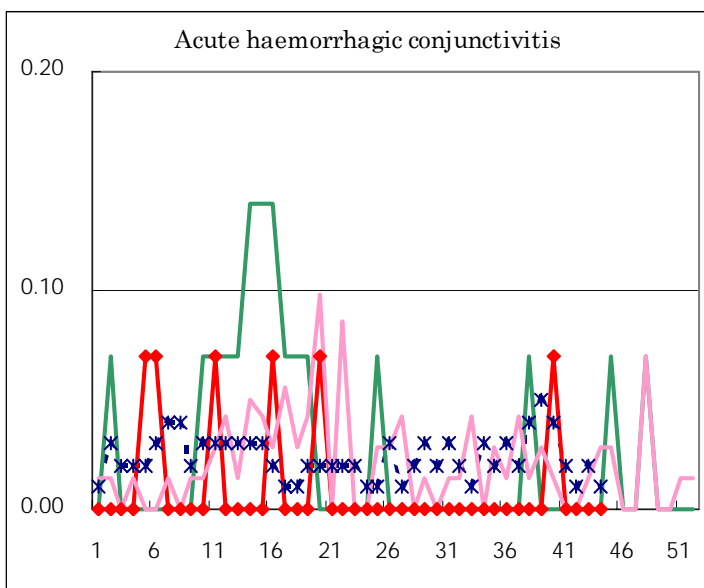
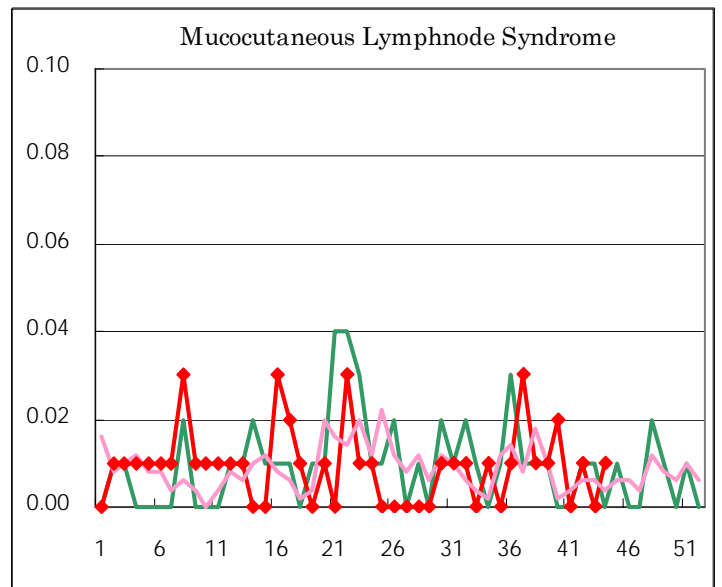
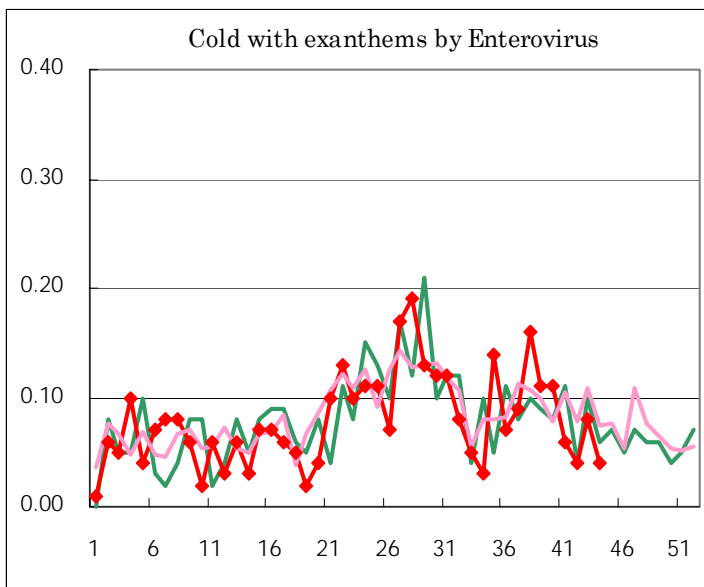
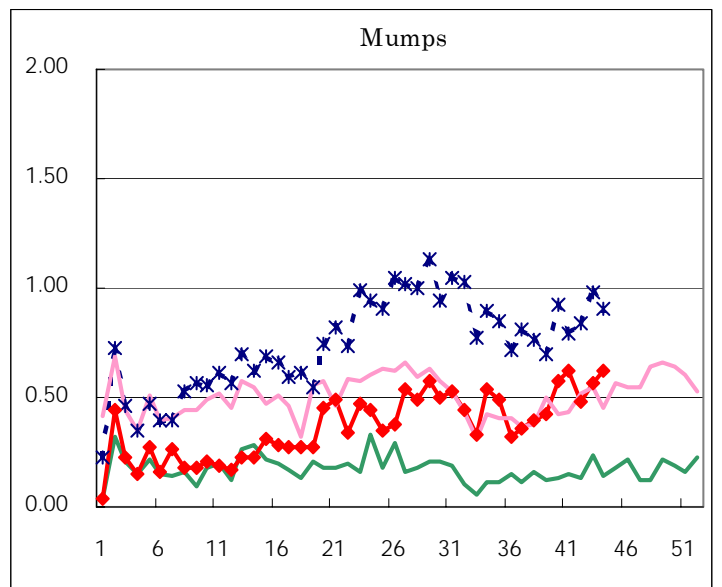
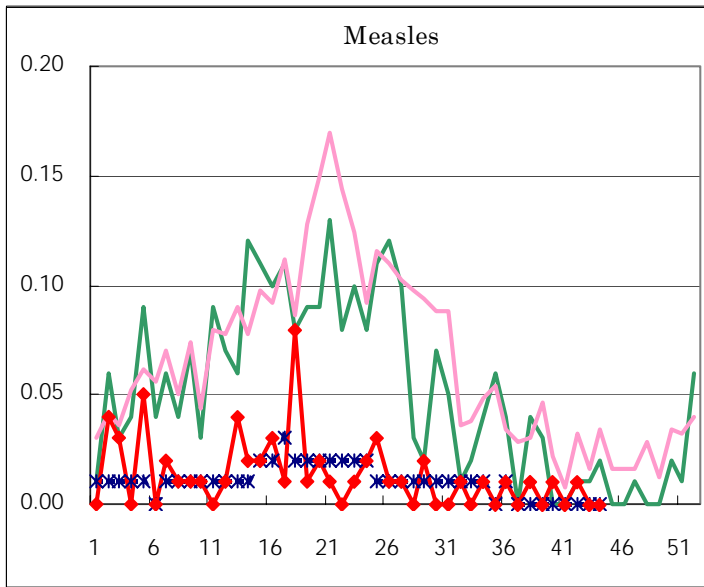
Diseases	Sex	2004				Total
		41st	42nd	43rd	44th	
Respiratory syncytial virus infection	M			1	6	7
	F			2	8	10
Influenza	M	3	13	13	13	42
	F	2	17	11	23	53
Pharyngoconjunctival fever	M	9	6	7	11	33
	F	10	5	5	6	26
Group A streptococcal pharyngitis	M	28	25	32	51	136
	F	24	25	30	37	116
Infectious gastroenteritis	M	152	173	185	211	721
	F	127	127	157	195	606
Chickenpox	M	24	38	42	48	152
	F	27	29	40	40	136
Hand, foot, and mouth disease	M	48	67	83	63	261
	F	54	52	68	65	239
Erythema infectiosum	M	2	6	6	14	28
	F	1	4	7	10	22
Exanthem subitum	M	40	26	38	35	139
	F	42	32	46	40	160
Pertussis	M	1	1	1		3
	F					
Rubella	M	3	1			4
	F	1				1
Herpangina	M	12	7	7	12	38
	F	7	11	5	7	30
Measles	M		1			1
	F		1			1
Mumps	M	60	43	43	42	188
	F	28	25	38	46	137
Cold with exanthems by Enterovirus	M	3	5	5	5	18
	F	5	1	7	1	14
Mucocutaneous Lymphnode Syndrome	M				1	1
	F		2		1	3
Acute hemorrhagic conjunctivitis	M					
	F					
Epidemic keratoconjunctivitis	M	6	5	5	7	23
	F	3	7	6	6	22
Bacterial meningitis	M					
	F				1	1
Aseptic meningitis	M	1				1
	F		1			1
Mycoplasma pneumonia	M		2	4	2	8
	F	1		2	5	8
Chlamydial pneumonia (excluding psittacosis)	M	1				1
	F					
Measles in adults	M					
	F					

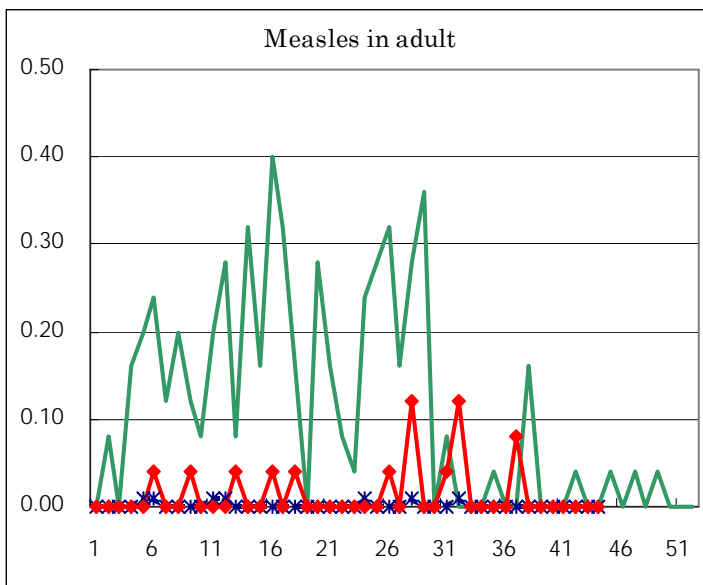
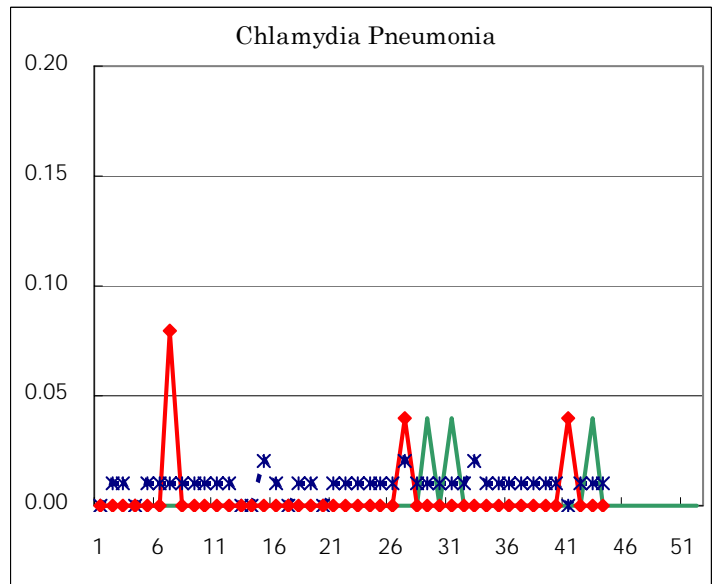
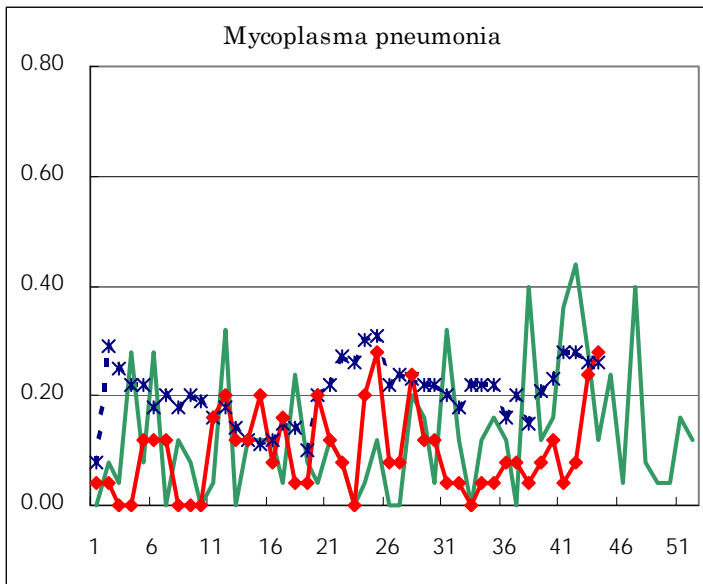
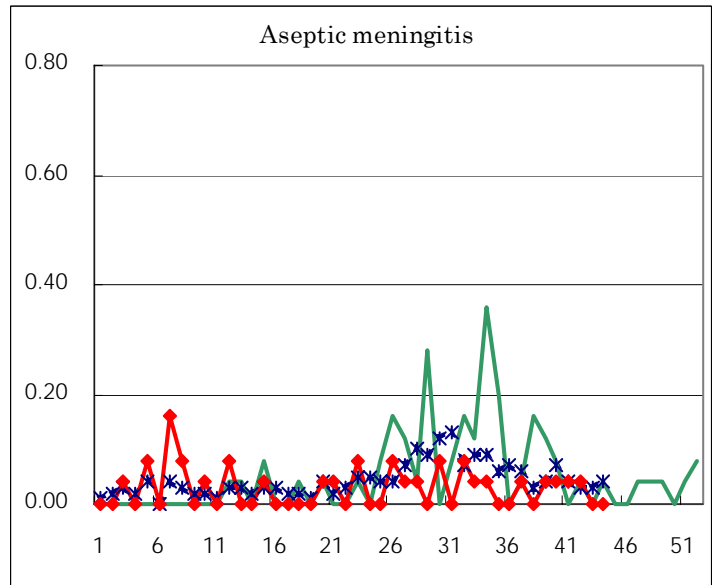
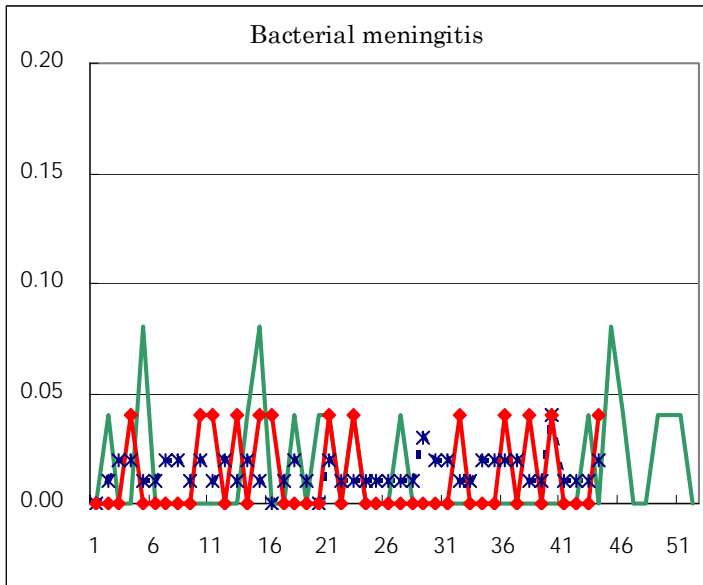
(Blank means 0.)

Disease Trend Graph (weekly reported cases per fixed-point in comparison)









Tokyo Metropolitan Government
Infectious Disease Surveillance Center