

INFECTIOUS DISEASES WEEKLY REPORT

# TOKYO IDWR

Tokyo Metropolitan Institute of Public Health

16 November 2004 / Number 45

- Number of patients with the diseases required notifying all the cases
- Number of patients with the diseases to be reported by the designated clinics and hospitals
- Disease trend graph (weekly reported cases per fixed-point in comparison)

## Surveillance System in Tokyo, Japan

### The diseases which all physicians must report

All physicians must report to health centers the incidence of the diseases which are shown at page one. Health centers electronically report the individual case to Tokyo Metropolitan Infectious Disease Surveillance Center.

### Fixed-point surveillance

The numbers of patients who visit designated clinics or hospitals during a week are reported to health centers ( There are 37 in Tokyo). And they electronically report the numbers to Tokyo Metropolitan Infectious Disease Surveillance Center. We have about 200 fixed points (clinics and hospitals) in Tokyo.

1<sup>st</sup> Week is early January and 52<sup>nd</sup> Week is end of December.

Tokyo Metropolitan Infectious Disease Surveillance Center  
Tokyo Metropolitan Institute of Public Health

TEL:81-3-3363-3213 FAX:81-3-5332-7365  
e-mail: [idsc@tokyo-eiken.go.jp](mailto:idsc@tokyo-eiken.go.jp)  
URL: [idsc.tokyo-eiken.go.jp/](http://idsc.tokyo-eiken.go.jp/)

## Number of patients with the diseases which all physicians must report

Category	Diseases	Tokyo				Japan		
		42nd	43rd	44th	45th	Total	45th	Total
I	Ebola hemorrhagic fever							
	Crimean-Congo hemorrhagic fever							
	Severe acute respiratory syndrome							
	Smallpox							
	Plague							
	Marburg disease							
	Lassa fever							
II	Acute poliomyelitis							
	Cholera			2		12	1	79
	Shigellosis	4	4	3	2	118	5	514
	Diphtheria							
	Typhoid fever	1		1		15		60
	Paratyphoid fever					15	2	77
III	Enterohemorrhagic <i>Escherichia coli</i> infection	3	4	9	1	258	35	3388
IV	Hepatitis E					4	(1)	(27)
	West Nile fever							
	Hepatitis A	1	1			21		(121)
	Echinococcosis							24
	Yellow fever							
	Psittacosis					3		39
	Relapsing fever							
	Q fever					1		7
	Rabies							
	High pathogenic avian influenza							
	Coccidioidomycosis	1				1		6
	Monkeypox							
	Hemorrhagic fever with renal syndrome							
	Anthrax							
	Scrub typhus (Tsumugamushi disease)					6	1	114
	Dengue fever	1	1	1	2	27	2	43
	Nipah virus infection							
	Japanese spotted fever							59
	Japanese encephalitis							5
	Hantavirus pulmonary syndrome							
B virus disease								
Brucellosis								
Epidemic typhus								
Botulism								
Malaria					18		62	
Tularemia								
Lyme disease							4	
Lyssavirus infection								
Legionellosis	2		1	1	18	6	130	
Leptospirosis					3	(2)	(15)	
V	Amebiasis	2	2	3	3	121	6	500
	Acute viral hepatitis(excluding Hepatitis A,Hepatitis E)	2	2	4	2	56	3	256
	Acute encephalitis	1	1			7	(11)	(111)
	Cryptosporidiosis	1				8		91
	Creutzfeldt-Jakob Disease	2	1			17		142
	Sever invasive streptococcal infections					5		49
	Acquired immunodeficiency syndrome	5	8	4	6	358	9	971
	Giardiasis					17	1	75
	Meningococcal meningitis					6		20
	Congenital rubella syndrome					3		8
	Syphilis	1		1		55	6	429
	Tetanus	1				2	1	88
	Vancomycin-resistant <i>Staphylococcus aureus</i> infection							
	Vancomycin-resistant <i>enterococcus</i> infection					9		44

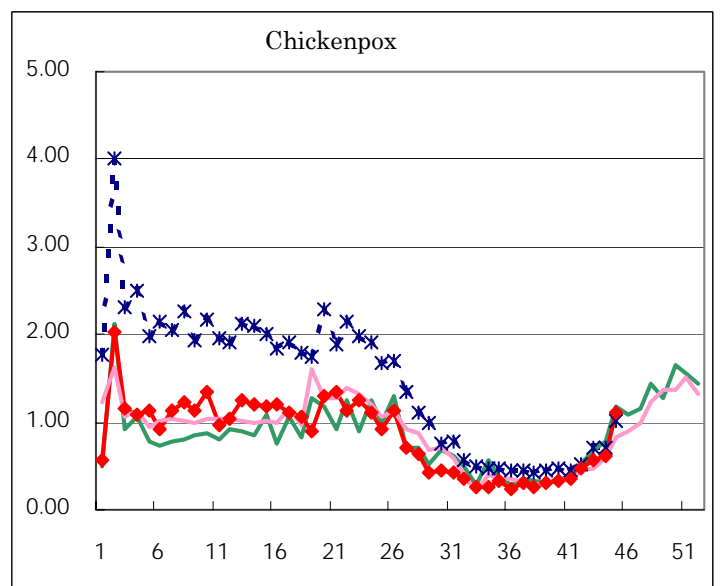
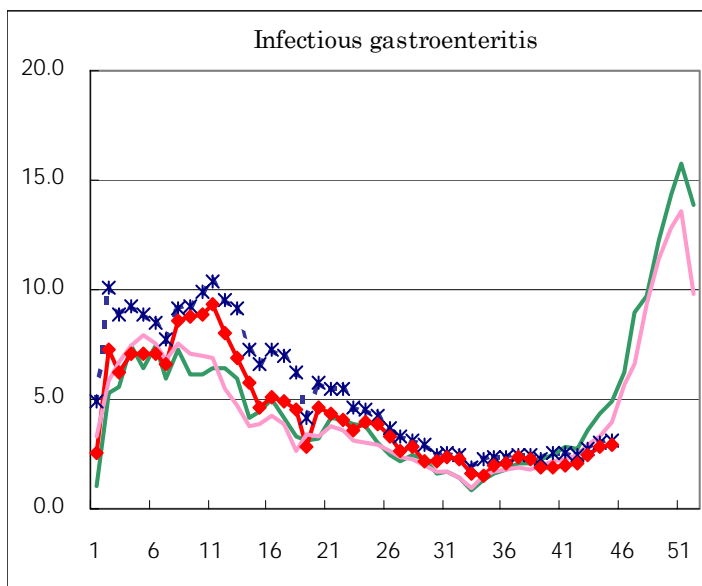
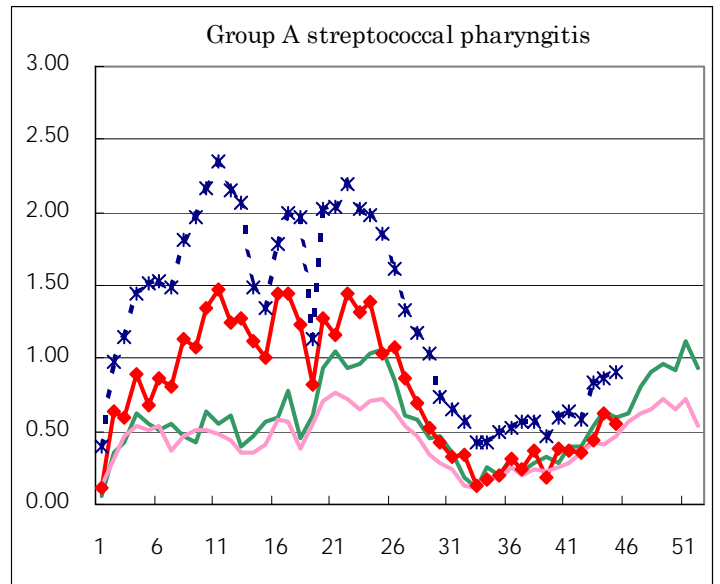
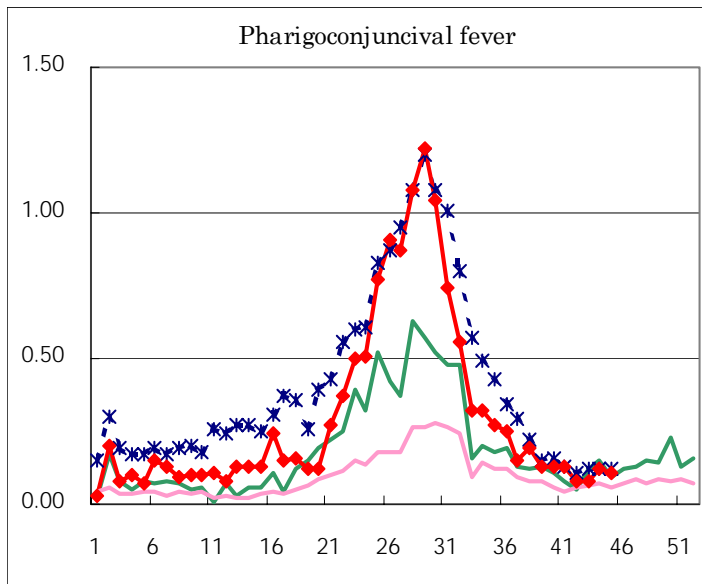
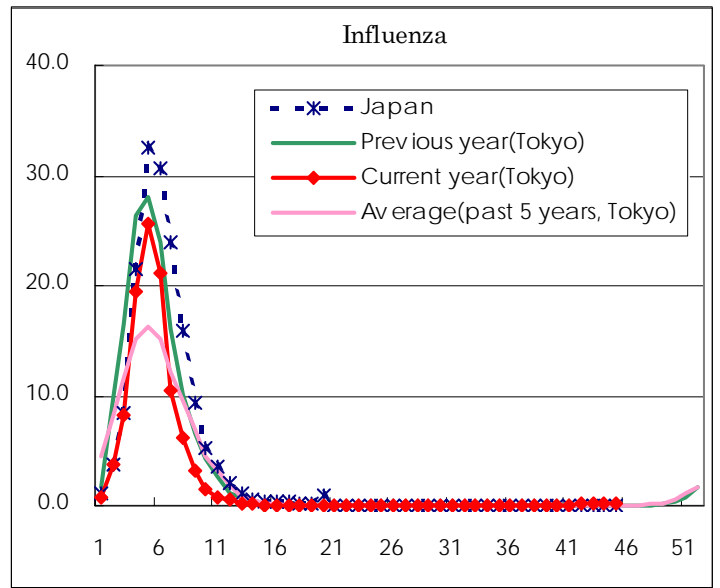
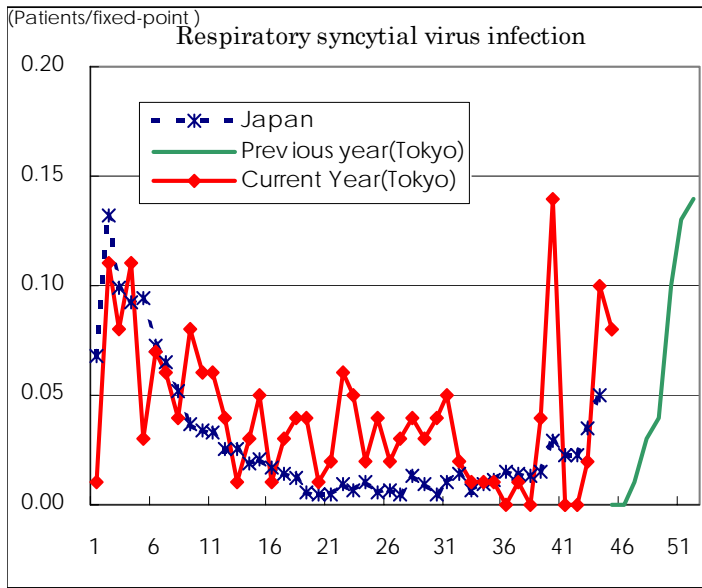
( Blank means 0. )

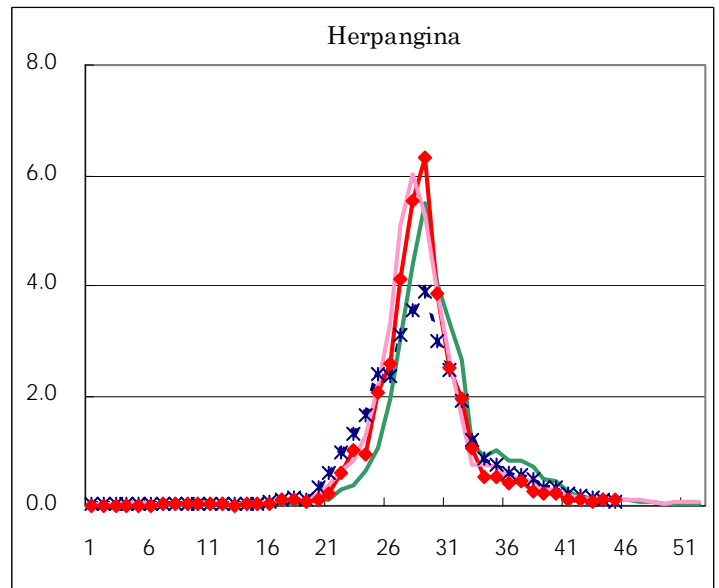
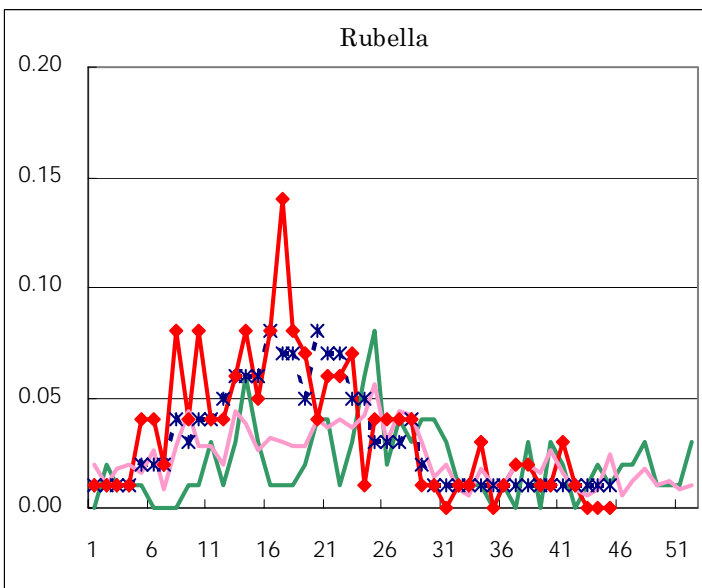
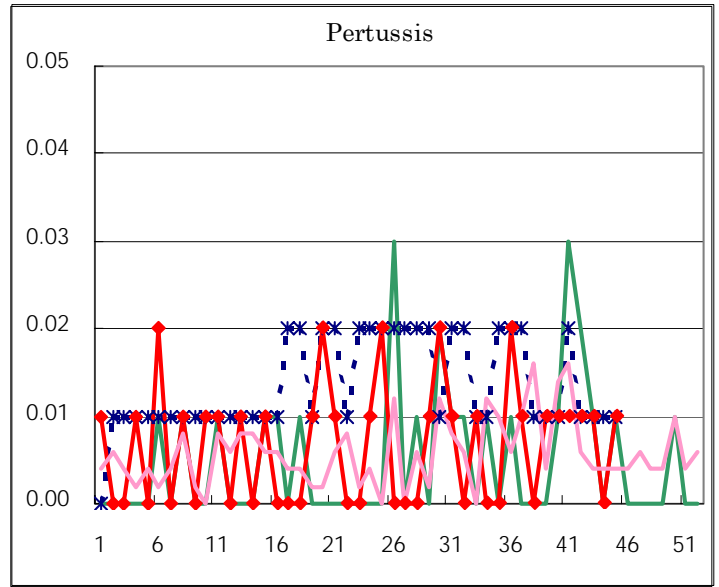
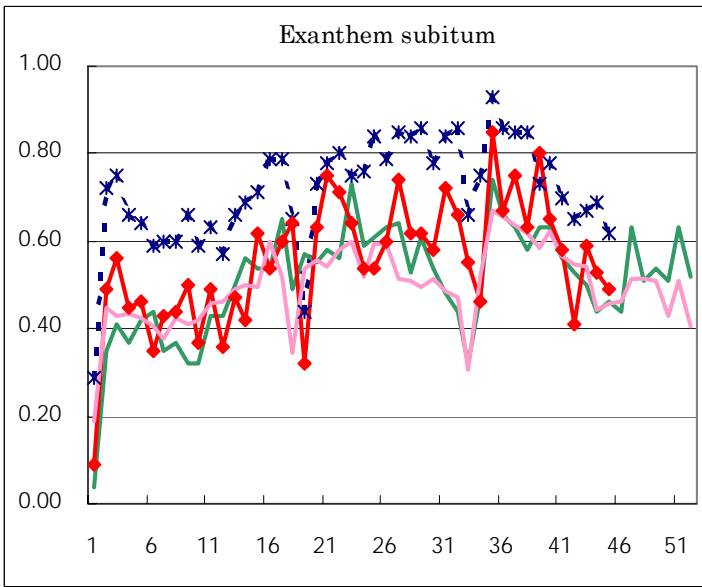
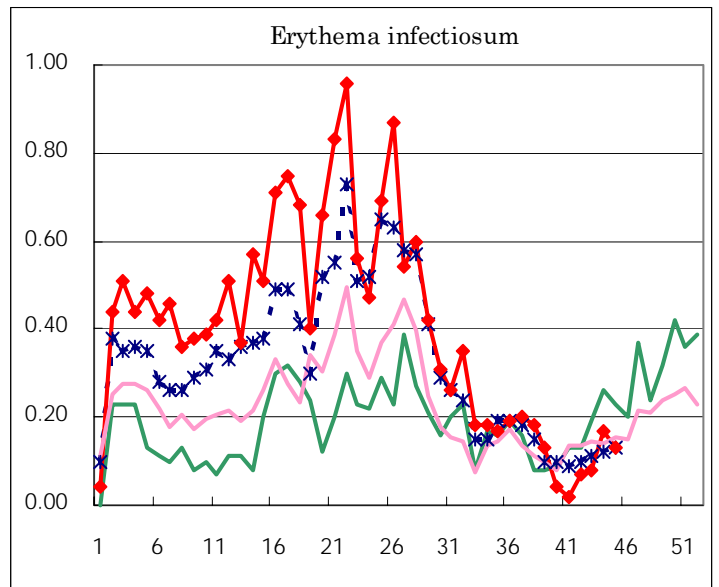
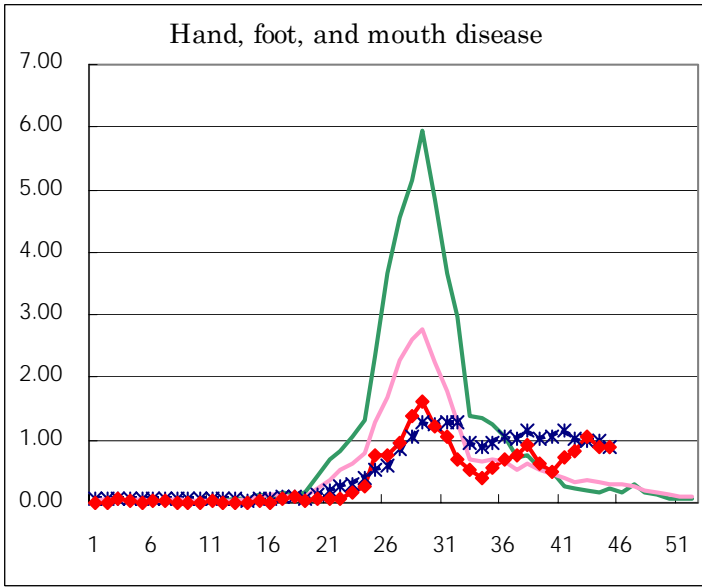
Number of patients with the diseases to be reported  
by the designated clinics and hospitals

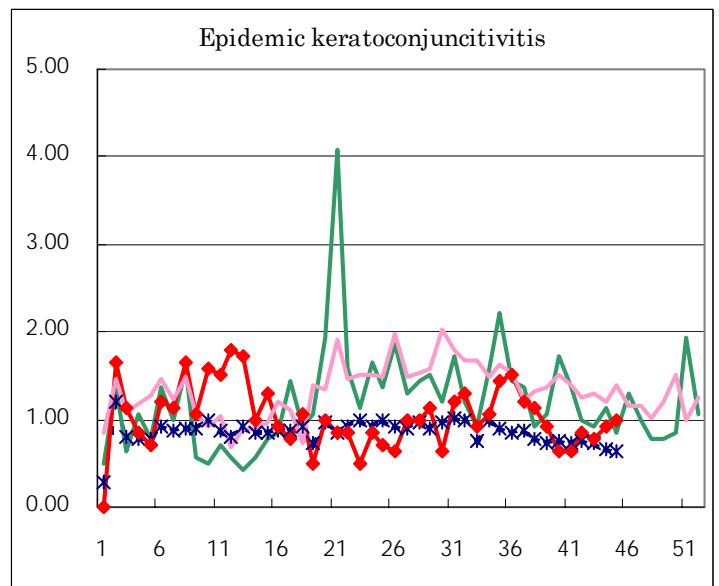
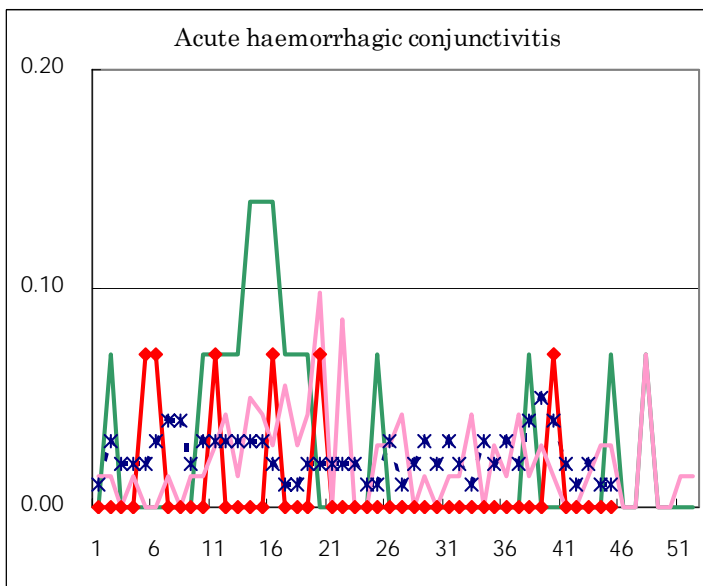
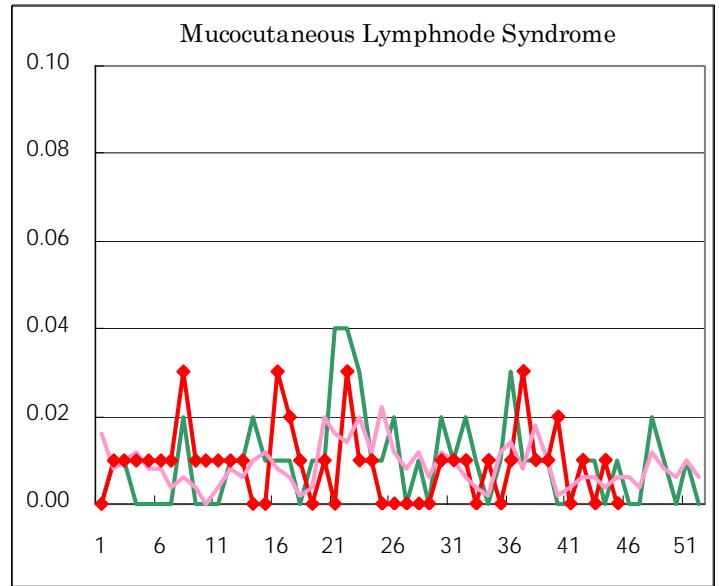
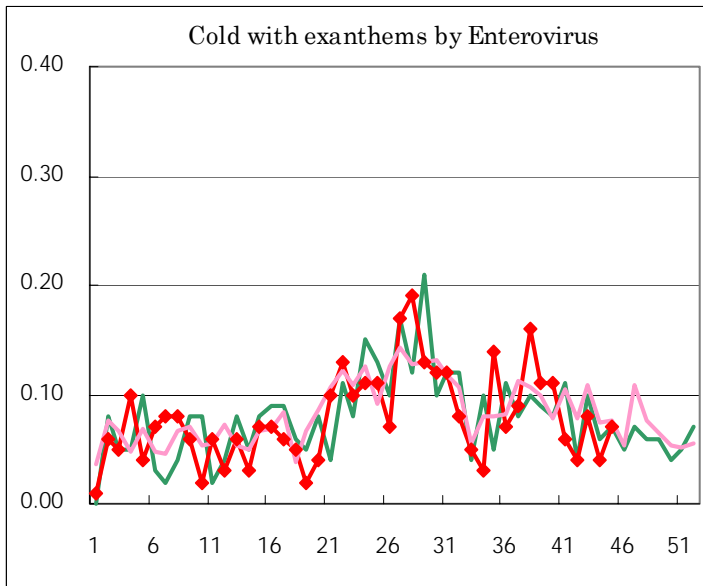
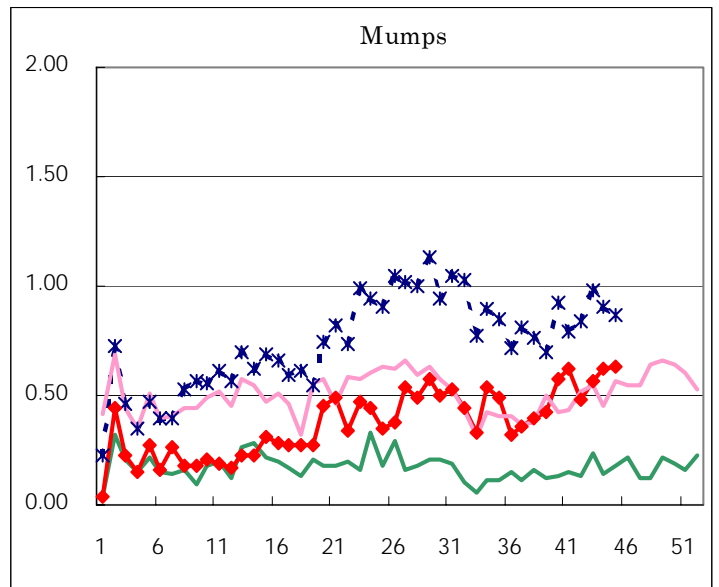
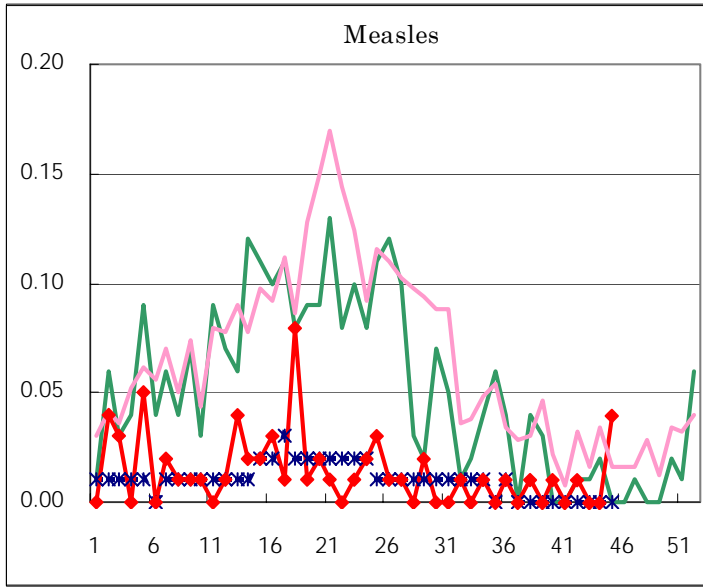
Diseases	Sex	2004				Total
		42nd	43rd	44th	45th	
Respiratory syncytial virus infection	M		1	6	5	12
	F		2	8	7	17
Influenza	M	13	13	13	25	64
	F	17	11	23	24	75
Pharyngoconjunctival fever	M	6	7	11	7	31
	F	5	5	6	8	24
Group A streptococcal pharyngitis	M	25	32	51	49	157
	F	25	30	37	29	121
Infectious gastroenteritis	M	173	185	211	245	814
	F	127	157	195	177	656
Chickenpox	M	38	42	48	80	208
	F	29	40	40	76	185
Hand, foot, and mouth disease	M	67	83	63	67	280
	F	52	68	65	58	243
Erythema infectiosum	M	6	6	14	10	36
	F	4	7	10	9	30
Exanthem subitum	M	26	38	35	36	135
	F	32	46	40	33	151
Pertussis	M	1	1			2
	F				2	2
Rubella	M	1				1
	F					
Herpangina	M	7	7	12	11	37
	F	11	5	7	6	29
Measles	M	1			4	5
	F	1			1	2
Mumps	M	43	43	42	43	171
	F	25	38	46	47	156
Cold with exanthems by Enterovirus	M	5	5	5	6	21
	F	1	7	1	4	13
Mucocutaneous Lymphnode Syndrome	M			1		1
	F	2		1		3
Acute hemorrhagic conjunctivitis	M					
	F					
Epidemic keratoconjunctivitis	M	5	5	7	9	26
	F	7	6	6	5	24
Bacterial meningitis	M				2	2
	F			1	1	2
Aseptic meningitis	M				3	3
	F	1			4	5
Mycoplasma pneumonia	M	2	4	2	5	13
	F		2	5	2	9
Chlamydial pneumonia (excluding psittacosis)	M					
	F					
Measles in adults	M					
	F					

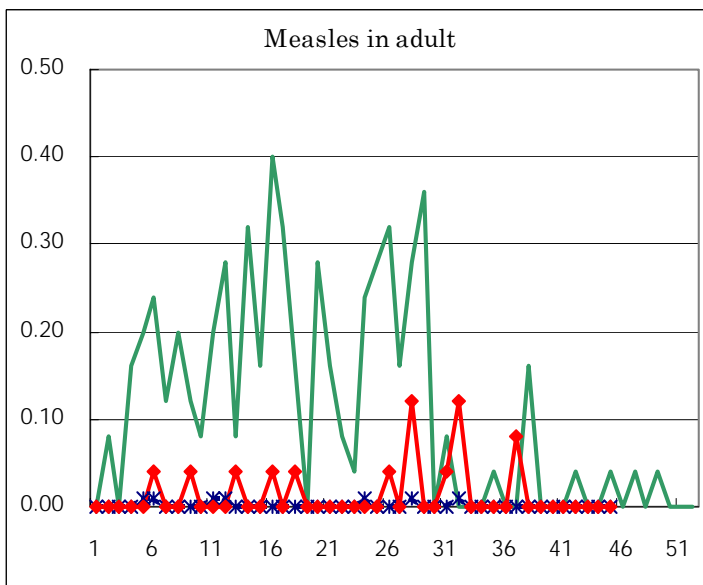
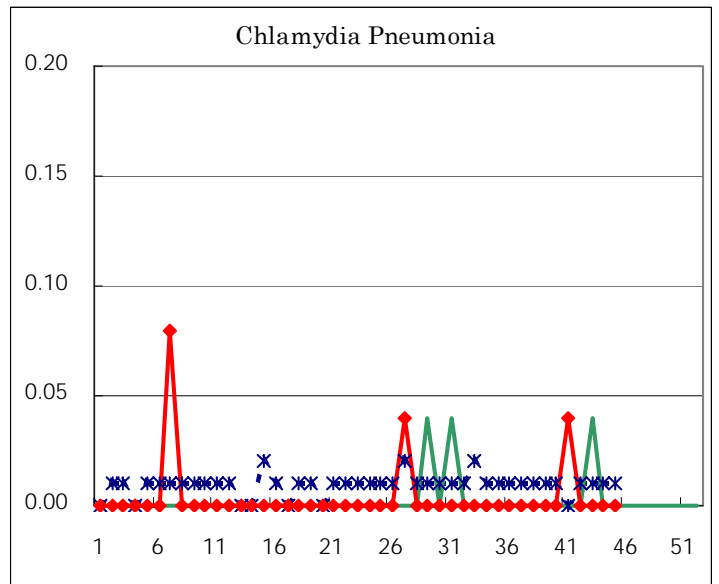
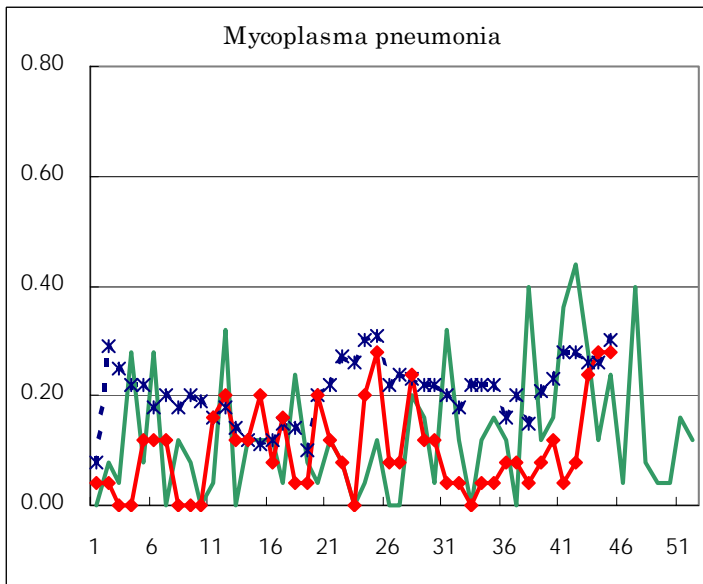
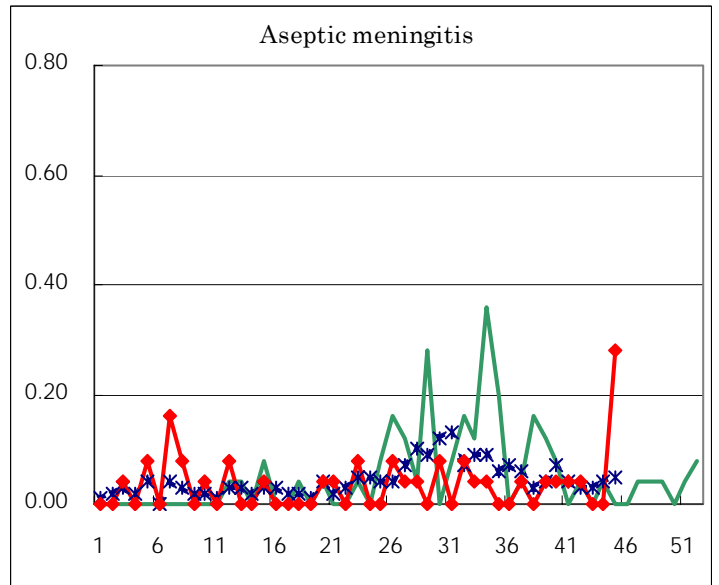
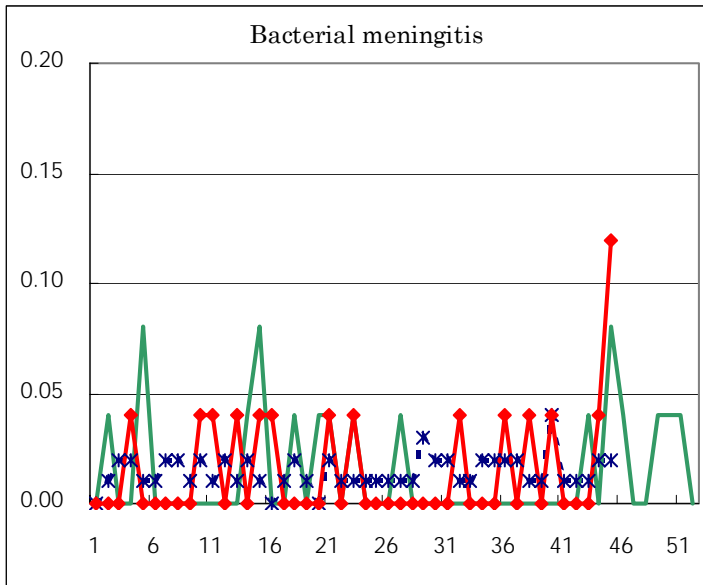
( Blank means 0. )

# Disease Trend Graph (weekly reported cases per fixed-point in comparison)









Tokyo Metropolitan Government  
**Infectious Disease Surveillance Center**