

INFECTIOUS DISEASES WEEKLY REPORT

TOKYO IDWR

Tokyo Metropolitan Institute of Public Health

30 November 2004 / Number 47

- Number of patients with the diseases required notifying all the cases
- Number of patients with the diseases to be reported by the designated clinics and hospitals
- Disease trend graph (weekly reported cases per fixed-point in comparison)

Surveillance System in Tokyo, Japan

The diseases which all physicians must report

All physicians must report to health centers the incidence of the diseases which are shown at page one. Health centers electronically report the individual case to Tokyo Metropolitan Infectious Disease Surveillance Center.

Fixed-point surveillance

The numbers of patients who visit designated clinics or hospitals during a week are reported to health centers (There are 37 in Tokyo). And they electronically report the numbers to Tokyo Metropolitan Infectious Disease Surveillance Center. We have about 200 fixed points (clinics and hospitals) in Tokyo.

1st Week is early January and 52nd Week is end of December.

Tokyo Metropolitan Infectious Disease Surveillance Center
Tokyo Metropolitan Institute of Public Health

TEL:81-3-3363-3213 FAX:81-3-5332-7365
e-mail: idsc@tokyo-eiken.go.jp
URL: idsc.tokyo-eiken.go.jp/

Number of patients with the diseases which all physicians must report

Category	Diseases	Tokyo				Japan		
		44th	45th	46th	47th	Total	47th	Total
I	Ebola hemorrhagic fever							
	Crimean-Congo hemorrhagic fever							
	Severe acute respiratory syndrome							
	Smallpox							
	Plague							
	Marburg disease							
	Lassa fever							
II	Acute poliomyelitis							
	Cholera	2				12		79
	Shigellosis	3	2	1	4	123	10	533
	Diphtheria							
	Typhoid fever	1		2		17		62
	Paratyphoid fever					15	1	78
III	Enterohemorrhagic <i>Escherichia coli</i> infection	9	1	5	4	267	35	3482
IV	Hepatitis E					4		(28)
	West Nile fever							
	Hepatitis A					21	(3)	(126)
	Echinococcosis							24
	Yellow fever							
	Psittacosis					3		38
	Relapsing fever							
	Q fever					1		7
	Rabies							
	High pathogenic avian influenza							
	Coccidioidomycosis					1		6
	Monkeypox							
	Hemorrhagic fever with renal syndrome							
	Anthrax							
	Scrub typhus (Tsumugamushi disease)					6	14	160
	Dengue fever	1	2			27		43
	Nipah virus infection							
	Japanese spotted fever						1	61
	Japanese encephalitis							5
	Hantavirus pulmonary syndrome							
	B virus disease							
Brucellosis								
Epidemic typhus								
Botulism								
Malaria					18	2	65	
Tularemia								
Lyme disease							4	
Lyssavirus infection								
Legionellosis	1	1			18	4	140	
Leptospirosis					3		(16)	
V	Amebiasis	3	3	4	3	128	4	519
	Acute viral hepatitis(excluding Hepatitis A,Hepatitis E)	4	2		1	57	3	270
	Acute encephalitis					7	(6)	(126)
	Cryptosporidiosis					8		91
	Creutzfeldt-Jakob Disease				1	18	3	151
	Sever invasive streptococcal infections					5		50
	Acquired immunodeficiency syndrome	4	6	10	4	372	7	1008
	Giardiasis				1	18	1	80
	Meningococcal meningitis			1		7		21
	Congenital rubella syndrome					3		8
	Syphilis	1			3	58	8	451
	Tetanus					2	1	91
	Vancomycin-resistant <i>Staphylococcus aureus</i> infection							
	Vancomycin-resistant <i>enterococcus</i> infection					9		45

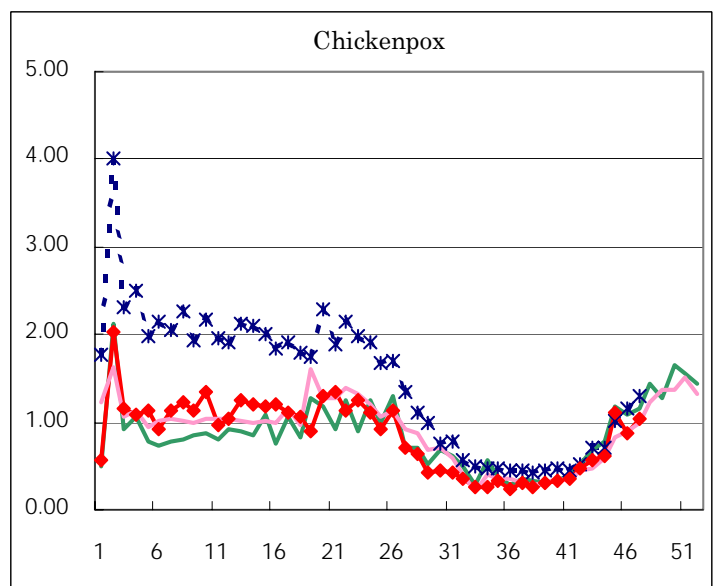
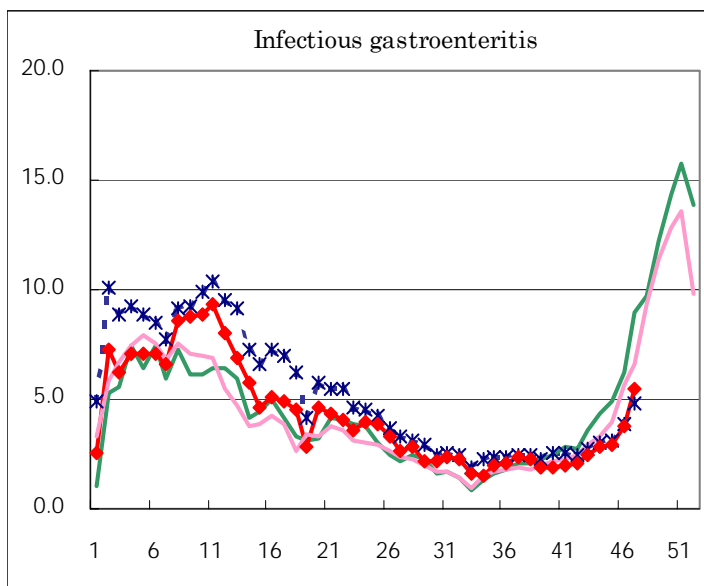
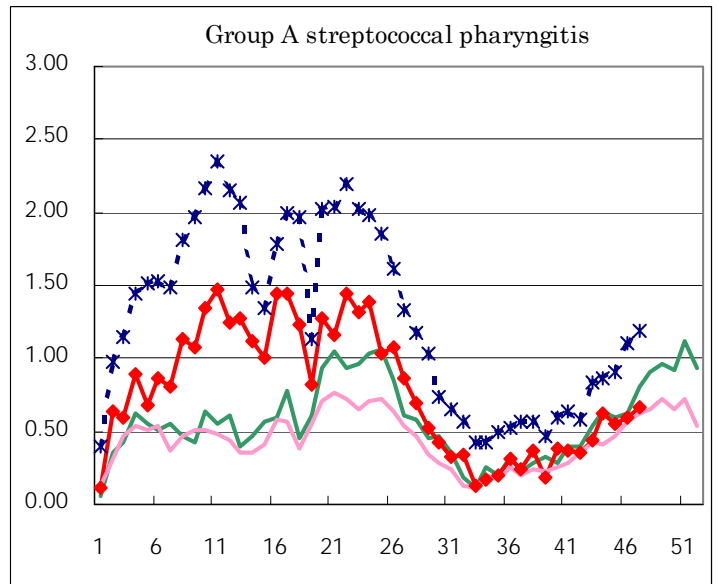
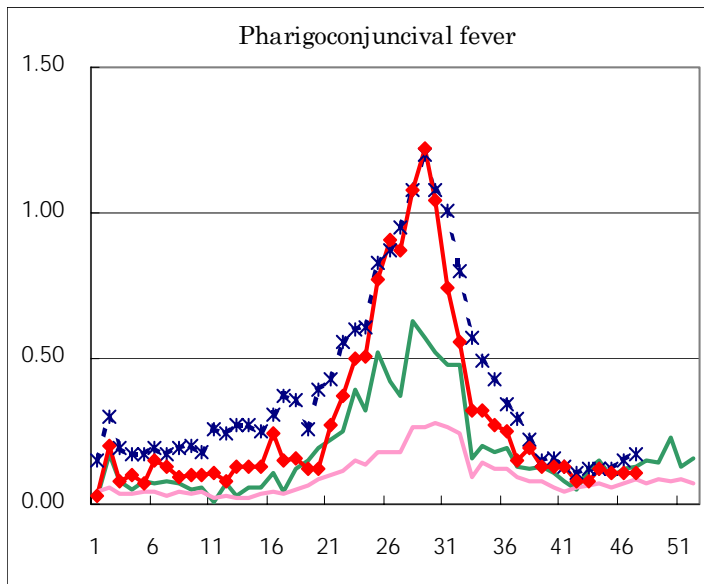
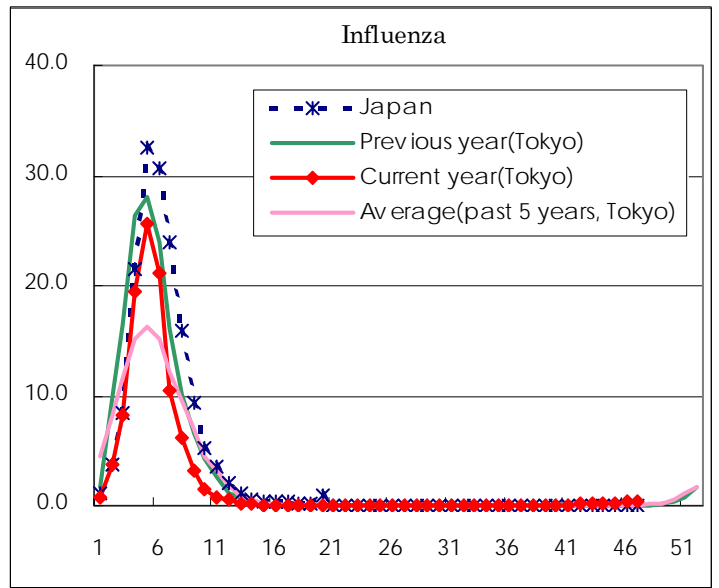
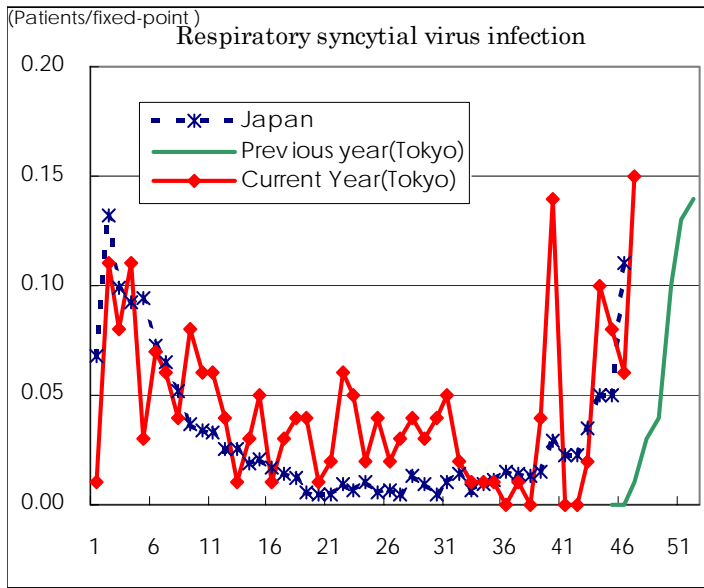
(Blank means 0.)

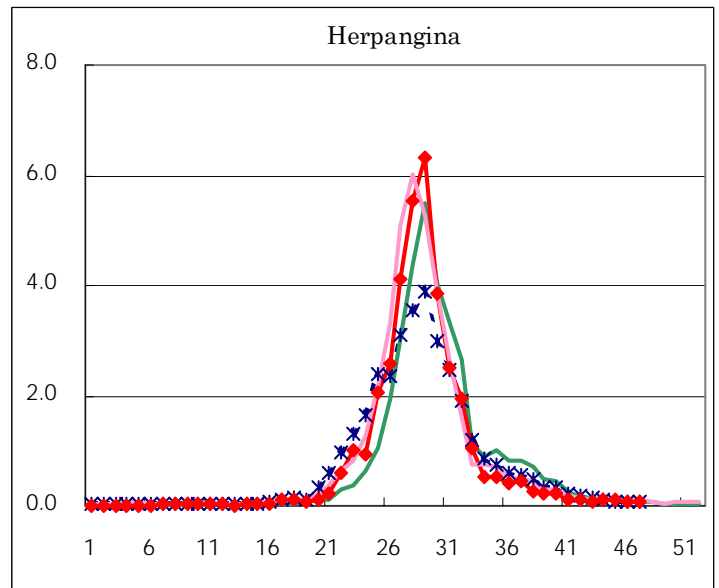
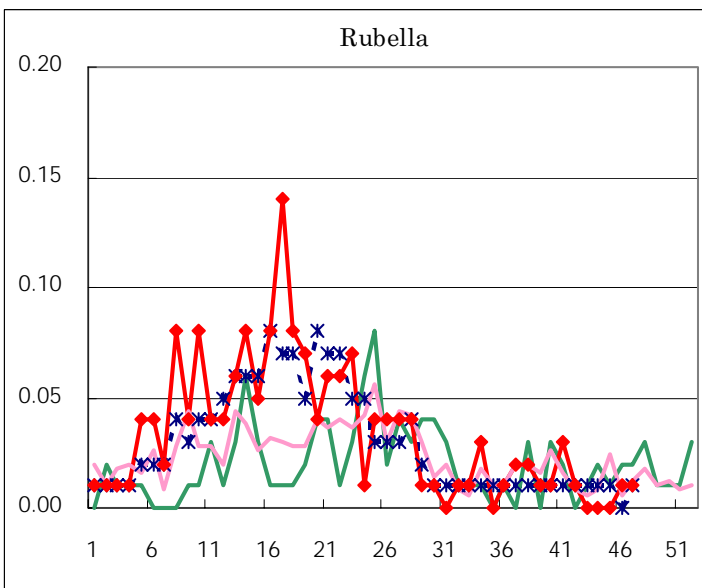
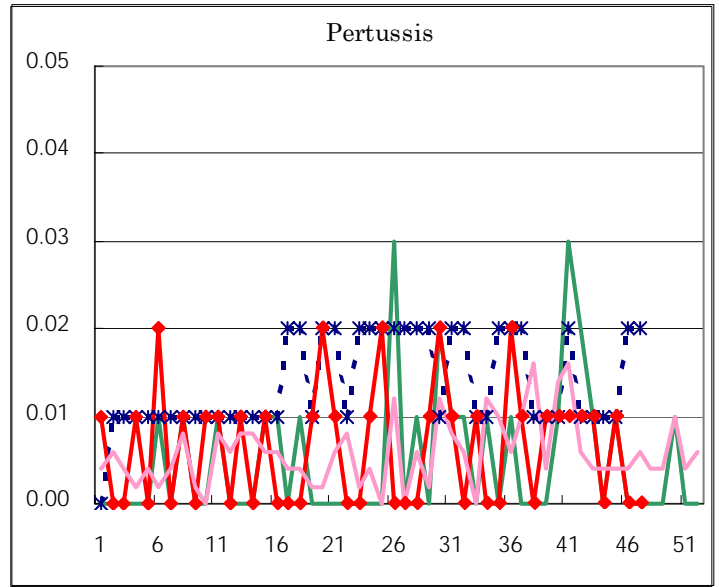
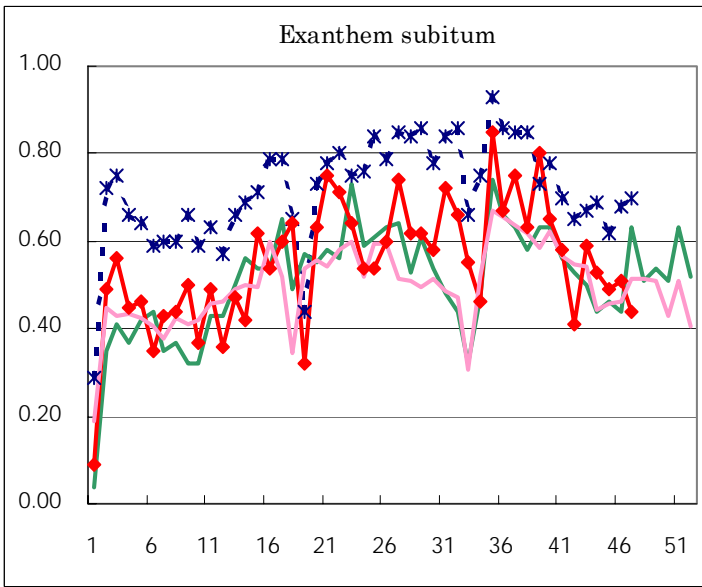
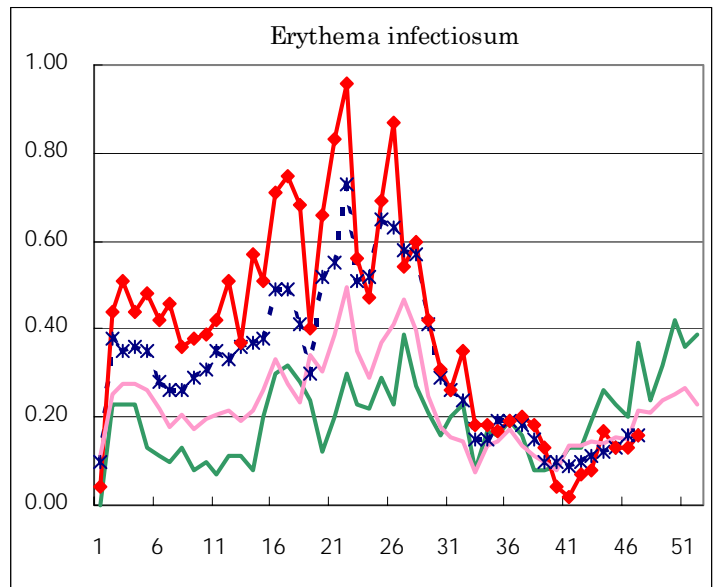
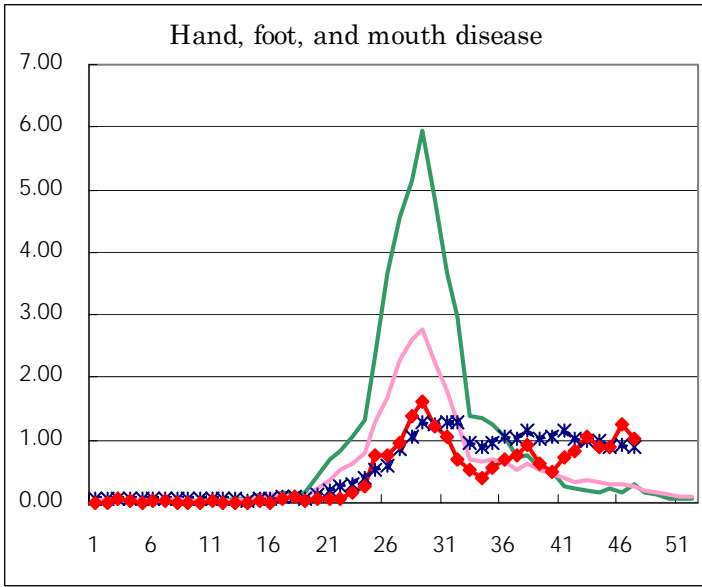
Number of patients with the diseases to be reported
by the designated clinics and hospitals

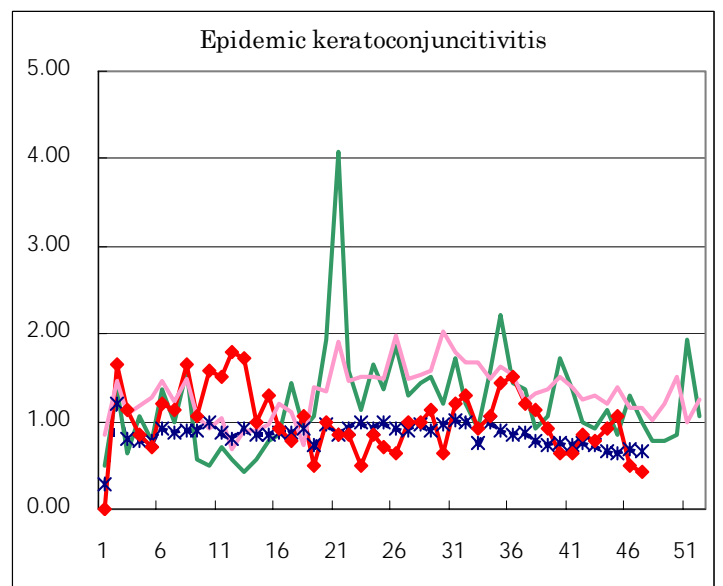
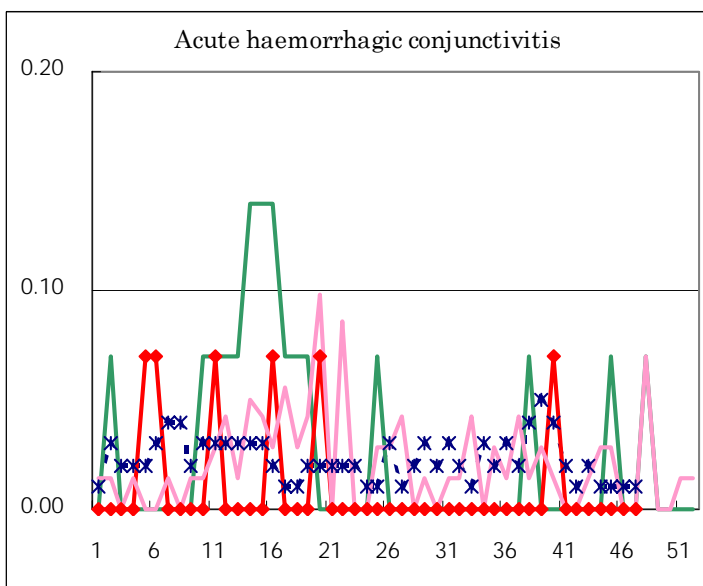
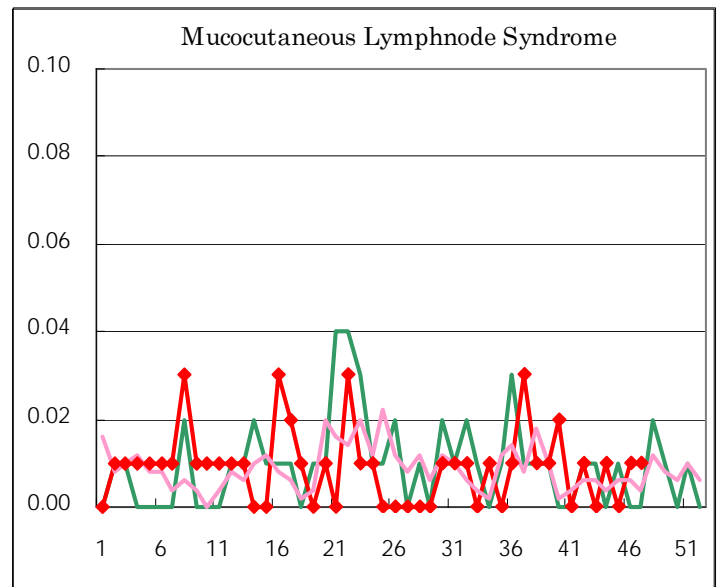
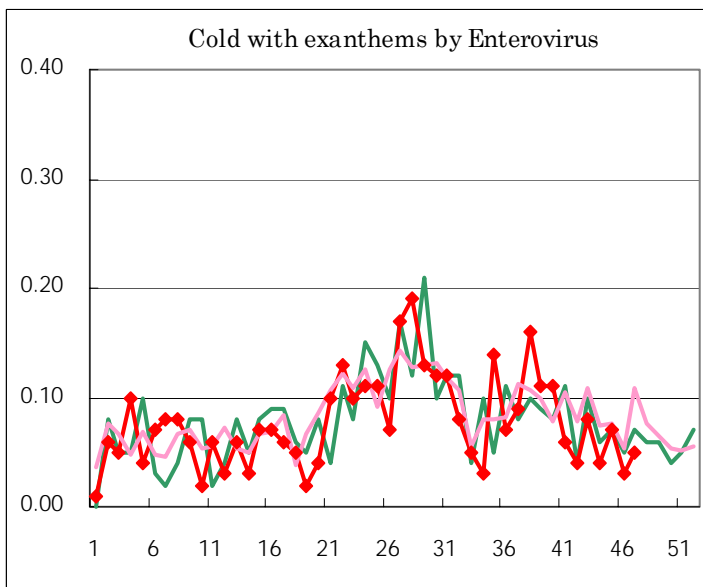
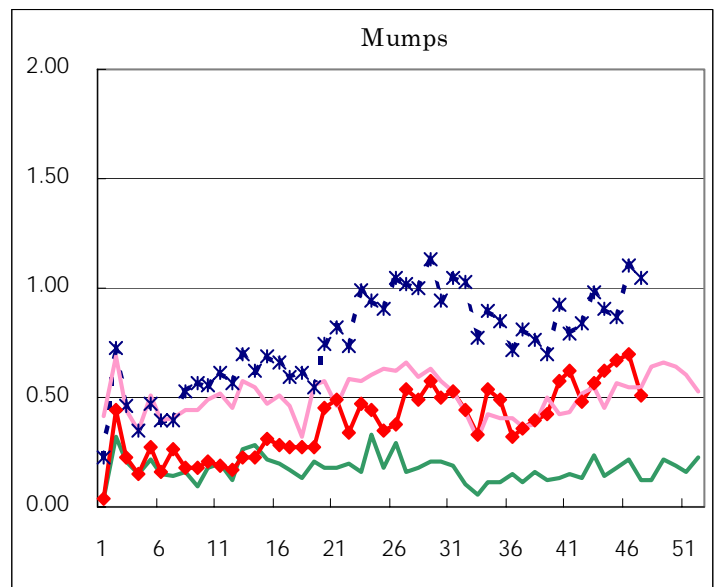
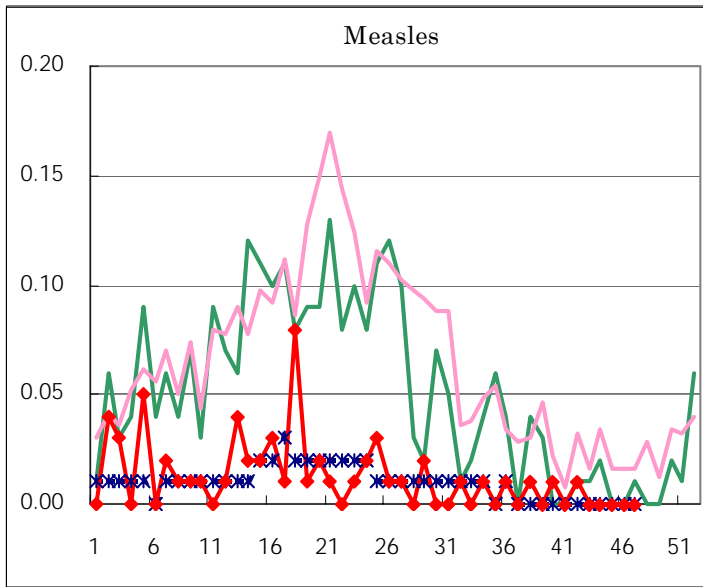
Diseases	Sex	2004				Total
		44th	45th	46th	47th	
Respiratory syncytial virus infection	M	6	5	5	14	30
	F	8	7	4	7	26
Influenza	M	13	25	25	30	93
	F	23	24	26	28	101
Pharygoconjunctival fever	M	11	7	6	9	33
	F	6	8	10	7	31
Group A streptococcal pharyngitis	M	51	49	45	59	204
	F	37	29	40	35	141
Infectious gastroenteritis	M	211	245	289	397	1,142
	F	195	177	249	384	1,005
Chickenpox	M	48	80	65	85	278
	F	40	76	59	63	238
Hand, foot, and mouth disease	M	63	67	94	73	297
	F	65	58	84	75	282
Erythema infectiosum	M	14	10	12	11	47
	F	10	9	6	12	37
Exanthem subitum	M	35	36	38	31	140
	F	40	33	34	32	139
Pertussis	M					
	F		2			2
Rubella	M				1	1
	F			1	1	2
Herpangina	M	12	11	7	5	35
	F	7	6	3	6	22
Measles	M					
	F					
Mumps	M	42	47	54	34	177
	F	46	48	46	38	178
Cold with exanthems by Enterovirus	M	5	6	1	2	14
	F	1	4	3	5	13
Mucocutaneous Lymphnode Syndrome	M	1		1	1	3
	F	1				1
Acute hemorrhagic conjunctivitis	M					
	F					
Epidemic keratoconjunctivitis	M	7	9	5	5	26
	F	6	6	2	1	15
Bacterial meningitis	M		2	1		3
	F	1	1	2	1	5
Aseptic meningitis	M		3			3
	F		4	1		5
Mycoplasma pneumonia	M	2	5	2	5	14
	F	5	2	5	2	14
Chlamydial pneumonia (excluding psittacosis)	M					
	F					
Measles in adults	M					
	F					

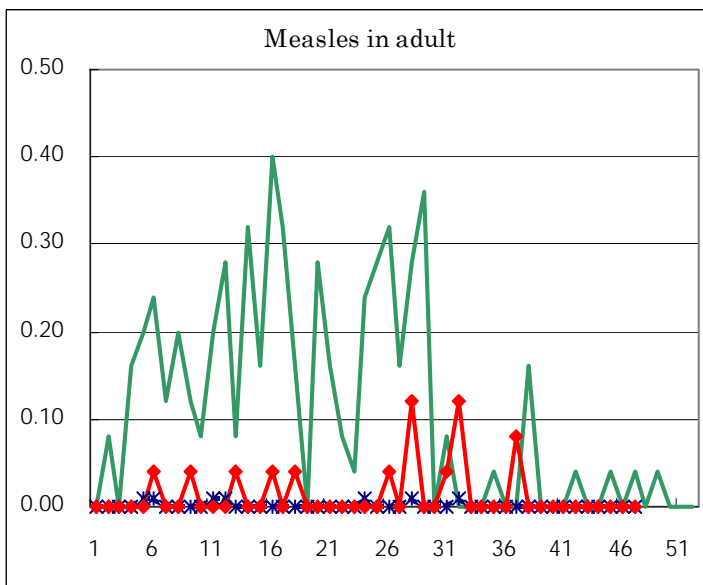
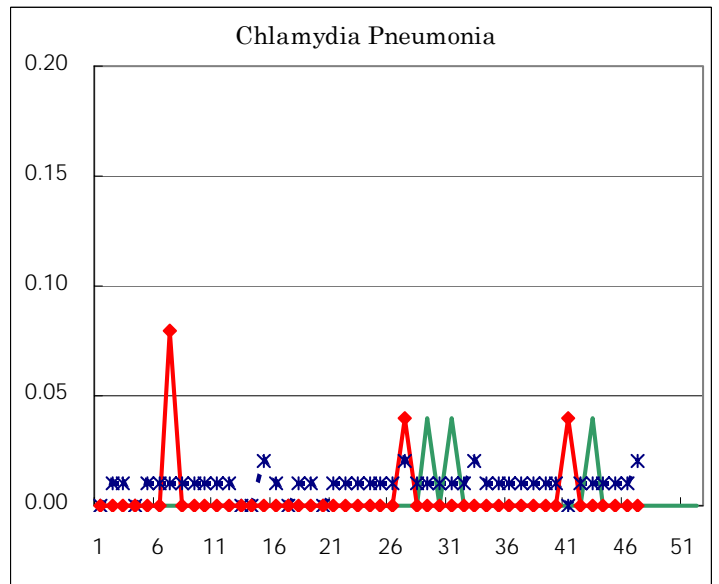
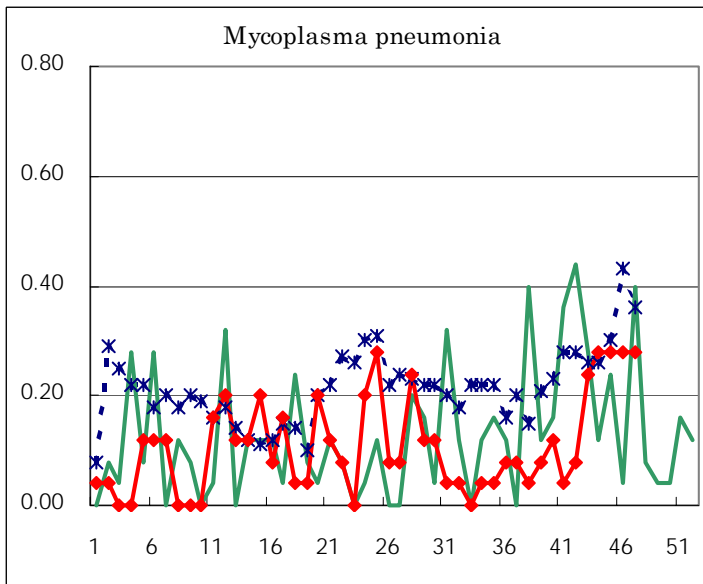
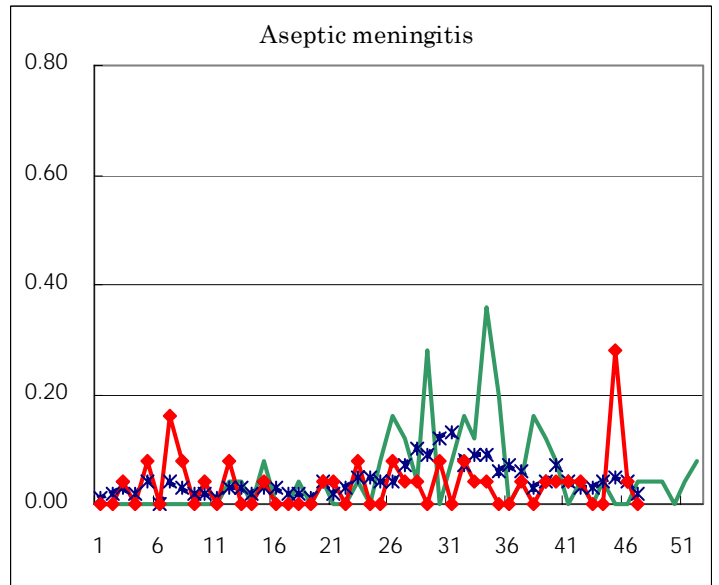
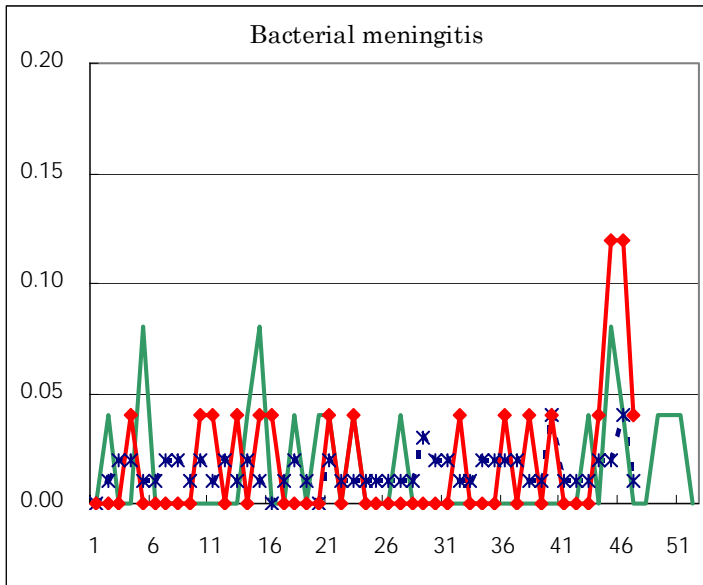
(Blank means 0.)

Disease Trend Graph (weekly reported cases per fixed-point in comparison)









Tokyo Metropolitan Government
Infectious Disease Surveillance Center