

INFECTIOUS DISEASES WEEKLY REPORT

# TOKYO IDWR

Tokyo Metropolitan Institute of Public Health

11 January 2005 / Number 52

- Number of patients with the diseases required notifying all the cases
- Number of patients with the diseases to be reported by the designated clinics and hospitals
- Disease trend graph (weekly reported cases per fixed-point in comparison)

## Surveillance System in Tokyo, Japan

### The diseases which all physicians must report

All physicians must report to health centers the incidence of the diseases which are shown at page one. Health centers electronically report the individual case to Tokyo Metropolitan Infectious Disease Surveillance Center.

### Fixed-point surveillance

The numbers of patients who visit designated clinics or hospitals during a week are reported to health centers ( There are 37 in Tokyo). And they electronically report the numbers to Tokyo Metropolitan Infectious Disease Surveillance Center. We have about 200 fixed points (clinics and hospitals) in Tokyo.

1<sup>st</sup> Week is early January and 53<sup>rd</sup> Week is end of December.

Tokyo Metropolitan Infectious Disease Surveillance Center  
Tokyo Metropolitan Institute of Public Health

TEL:81-3-3363-3213 FAX:81-3-5332-7365  
e-mail:[idsc@tokyo-eiken.go.jp](mailto:idsc@tokyo-eiken.go.jp)  
URL:[idsc.tokyo-eiken.go.jp/](http://idsc.tokyo-eiken.go.jp/)

## Number of patients with the diseases which all physicians must report

Category	Diseases	Tokyo					Japan	
		49th	50th	51st	52nd	Total	52nd	Total
I	Ebola hemorrhagic fever							
	Crimean-Congo hemorrhagic fever							
	Severe acute respiratory syndrome							
	Smallpox							
	Plague							
	Marburg disease							
	Lassa fever							
II	Acute poliomyelitis							
	Cholera					12	2	82
	Shigellosis	4	4	1	1	134	7	569
	Diphtheria							
	Typhoid fever					17	1	66
	Paratyphoid fever					15	2	84
III	Enterohemorrhagic <i>Escherichia coli</i> infection			1	2	273	15	3628
IV	Hepatitis E					4	(1)	(31)
	West Nile fever							
	Hepatitis A					22	(3)	(133)
	Echinococcosis							24
	Yellow fever							
	Psittacosis					3		38
	Relapsing fever							
	Q fever					1		7
	Rabies							
	High pathogenic avian influenza							
	Coccidioidomycosis					1		6
	Monkeypox							
	Hemorrhagic fever with renal syndrome							
	Anthrax							
	Scrub typhus (Tsutsugamushi disease)		1			7	6	281
	Dengue fever					27		45
	Nipah virus infection							
	Japanese spotted fever							67
	Japanese encephalitis							5
	Hantavirus pulmonary syndrome							
	B virus disease							
	Brucellosis							
	Epidemic typhus							
Botulism								
Malaria		1		1	22	1	73	
Tularemia								
Lyme disease							4	
Lyssavirus infection								
Legionellosis					18	5	160	
Leptospirosis					3		(17)	
V	Amebiasis	2	6	1	2	139	7	574
	Acute viral hepatitis(excluding Hepatitis A,Hepatitis E)			1		58	2	293
	Acute encephalitis					8		(151)
	Cryptosporidiosis					8		91
	Creutzfeldt-Jakob Disease			1		20		166
	Sever invasive streptococcal infections					6	1	53
	Acquired immunodeficiency syndrome	15	5	5	5	407	9	1104
	Giardiasis					18		84
	Meningococcal meningitis					7		22
	Congenital rubella syndrome					3	1	10
	Syphilis	1		4		65	3	510
	Tetanus					2		99
	Vancomycin-resistant <i>Staphylococcus aureus</i> infection							
	Vancomycin-resistant <i>enterococcus</i> infection					10	1	48

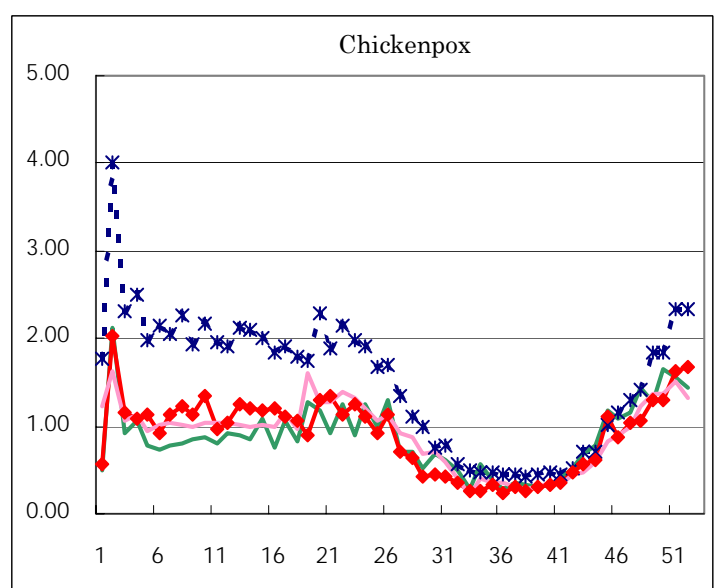
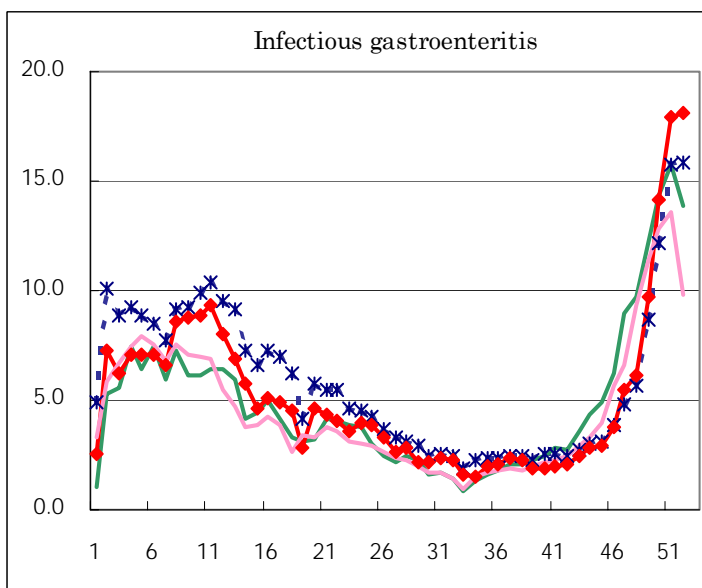
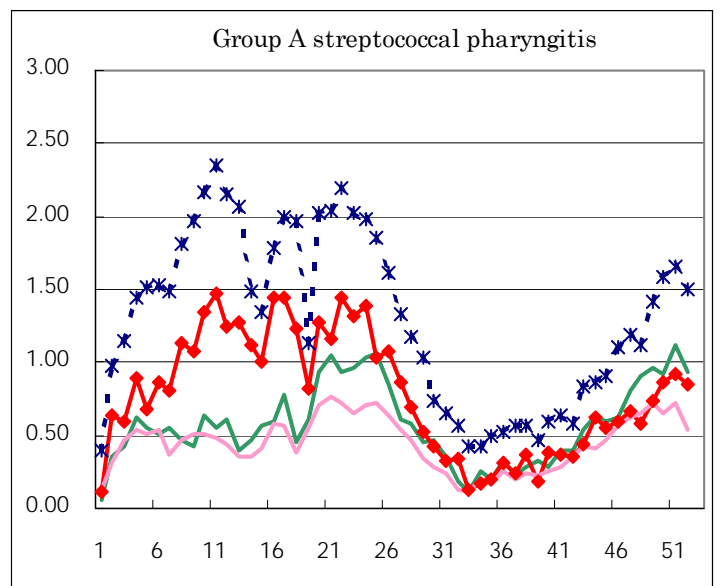
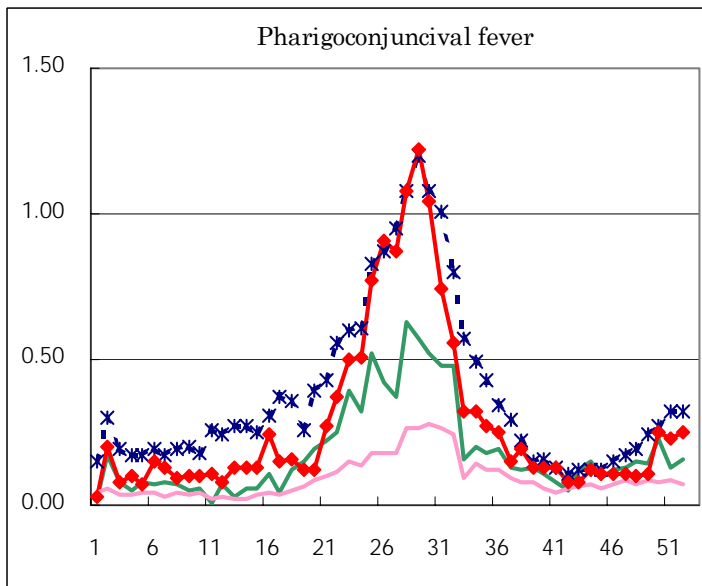
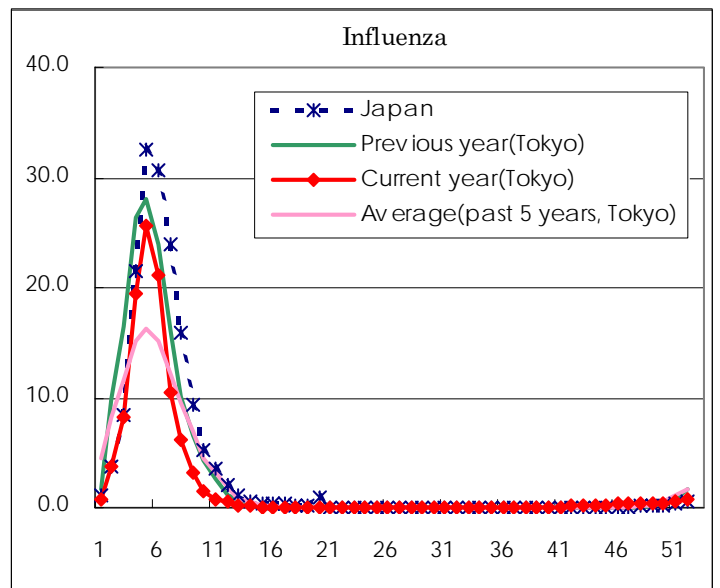
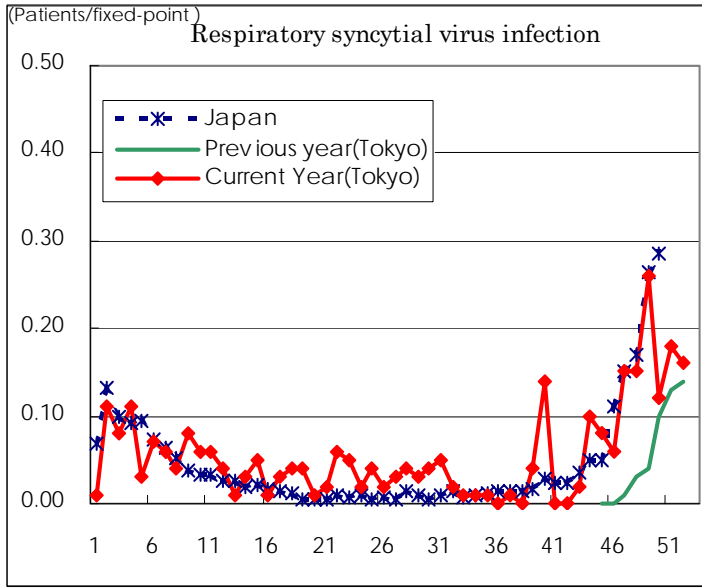
( Blank means 0. )

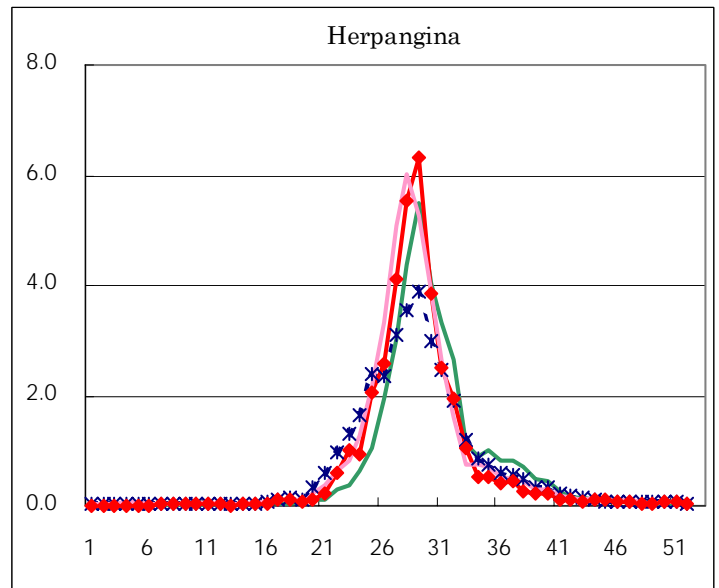
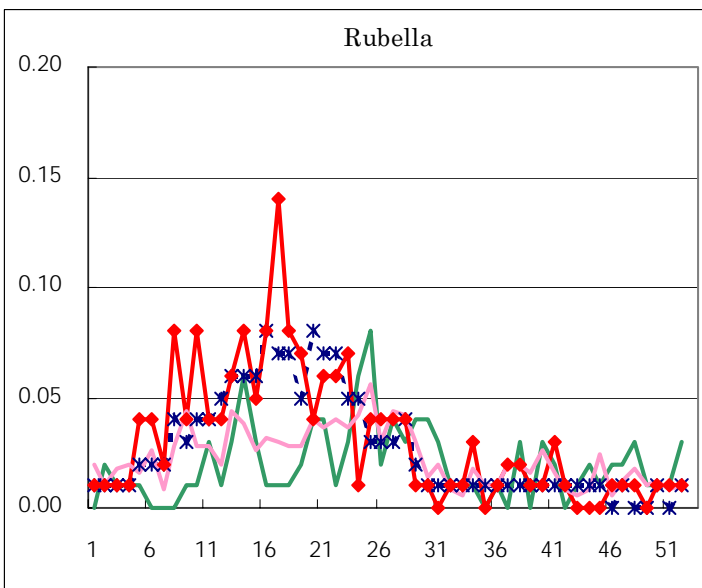
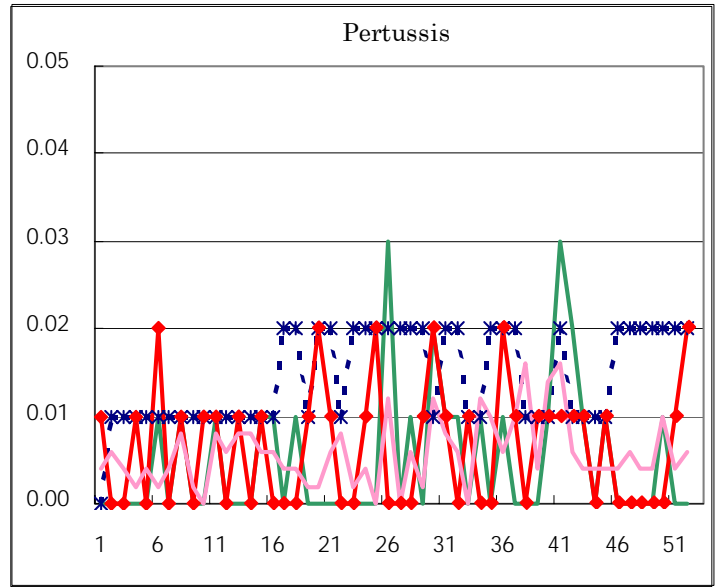
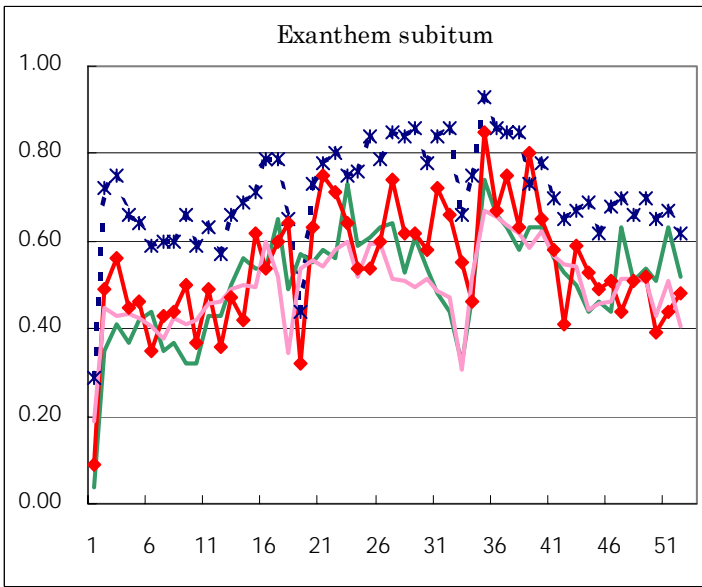
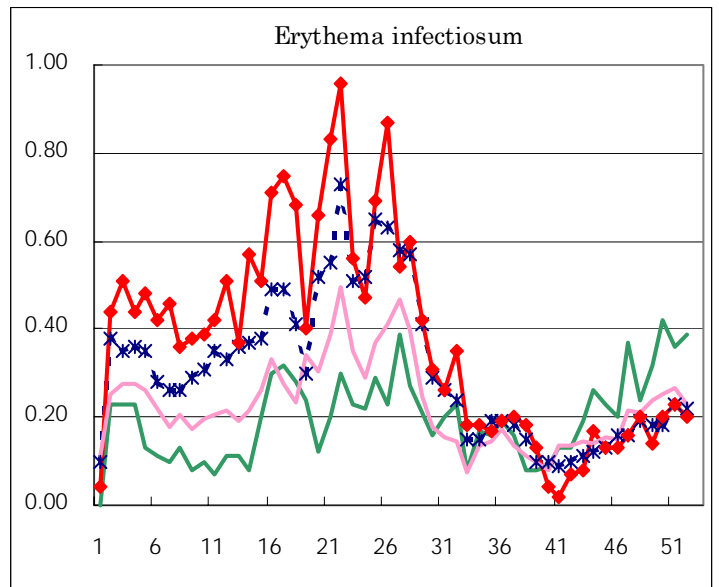
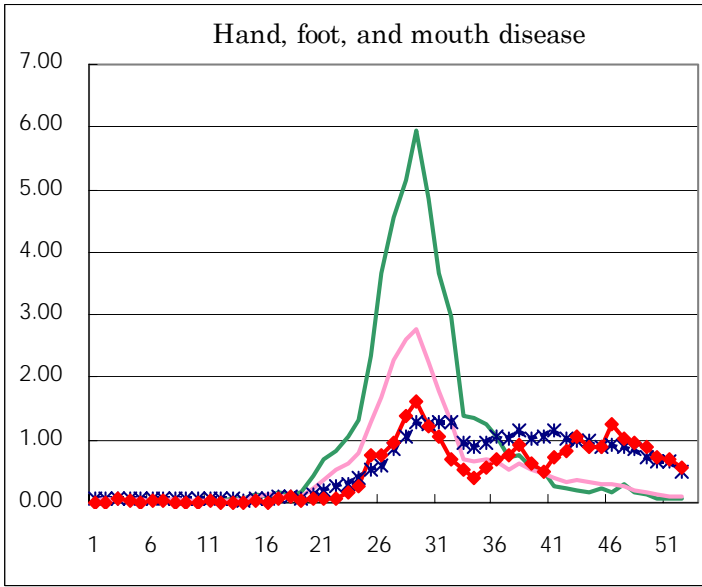
Number of patients with the diseases to be reported  
by the designated clinics and hospitals

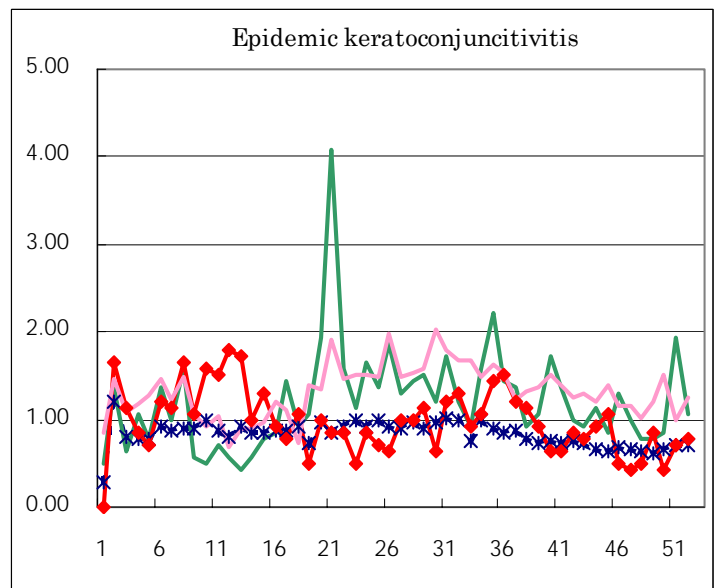
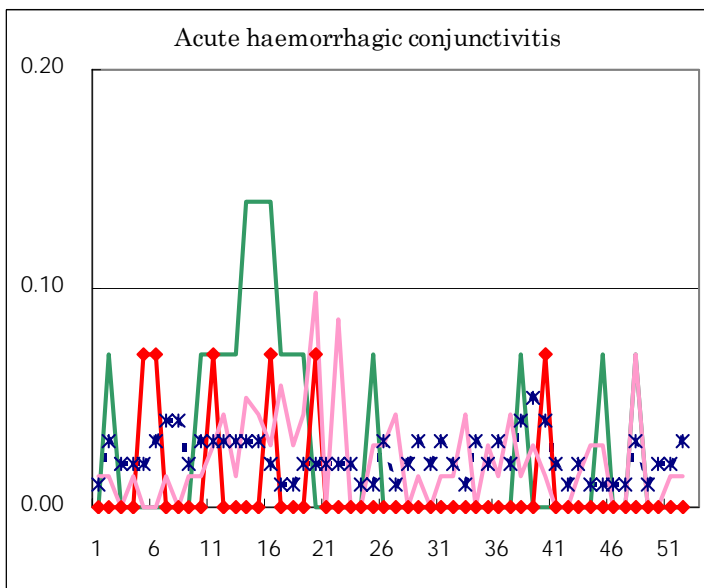
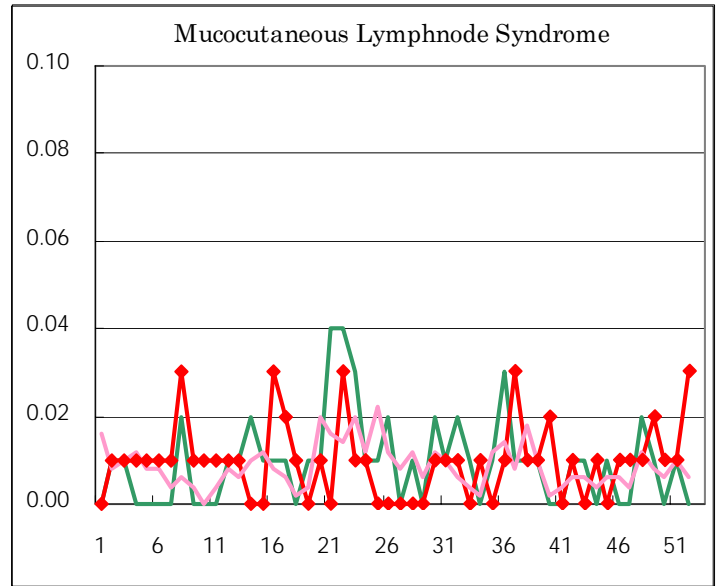
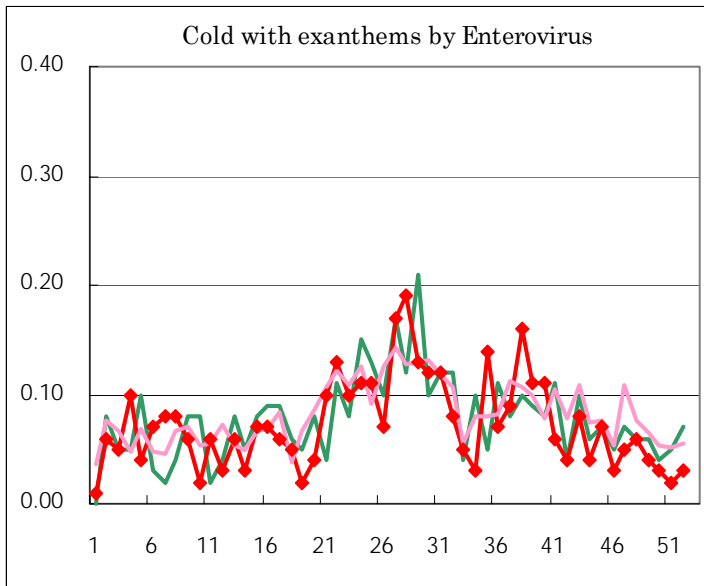
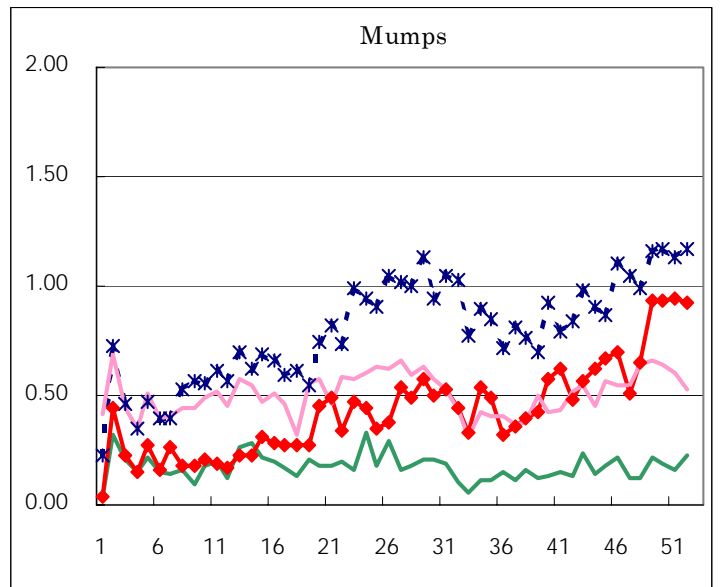
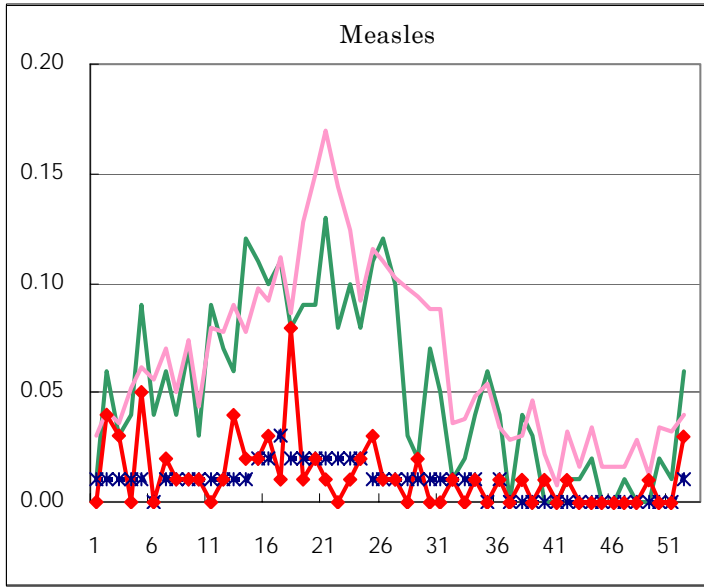
Diseases	Sex	2004				Total
		49th	50th	51st	52nd	
Respiratory syncytial virus infection	M	26	9	14	17	66
	F	13	12	11	6	42
Influenza	M	38	38	55	62	193
	F	38	30	54	70	192
Pharygoconjunctival fever	M	6	19	15	11	51
	F	9	17	18	24	68
Group A streptococcal pharyngitis	M	62	62	75	70	269
	F	43	61	56	51	211
Infectious gastroenteritis	M	680	1,048	1,272	1,311	4,311
	F	693	960	1,272	1,267	4,192
Chickenpox	M	98	89	122	127	436
	F	86	95	109	110	400
Hand, foot, and mouth disease	M	68	64	50	45	227
	F	57	40	46	33	176
Erythema infectiosum	M	12	13	13	15	53
	F	8	15	20	13	56
Exanthem subitum	M	38	34	39	31	142
	F	36	21	24	37	118
Pertussis	M				2	2
	F			1	1	2
Rubella	M			1	1	2
	F		1			1
Herpangina	M	1	7	10	6	24
	F	4	4	3	1	12
Measles	M	1			2	3
	F	1			2	3
Mumps	M	65	75	82	75	297
	F	67	57	52	56	232
Cold with exanthems by Enterovirus	M	3	2	3	3	11
	F	2	2		1	5
Mucocutaneous Lymphnode Syndrome	M	2	2	1	3	8
	F	1		1	1	3
Acute hemorrhagic conjunctivitis	M					
	F					
Epidemic keratoconjunctivitis	M	4	3	6	8	21
	F	8	3	4	3	18
Bacterial meningitis	M					
	F			2		2
Aseptic meningitis	M	2				2
	F	1	1		1	3
Mycoplasma pneumonia	M	4	3	1	2	10
	F	3		6	2	11
Chlamydial pneumonia (excluding psittacosis)	M					
	F					
Measles in adults	M					
	F					

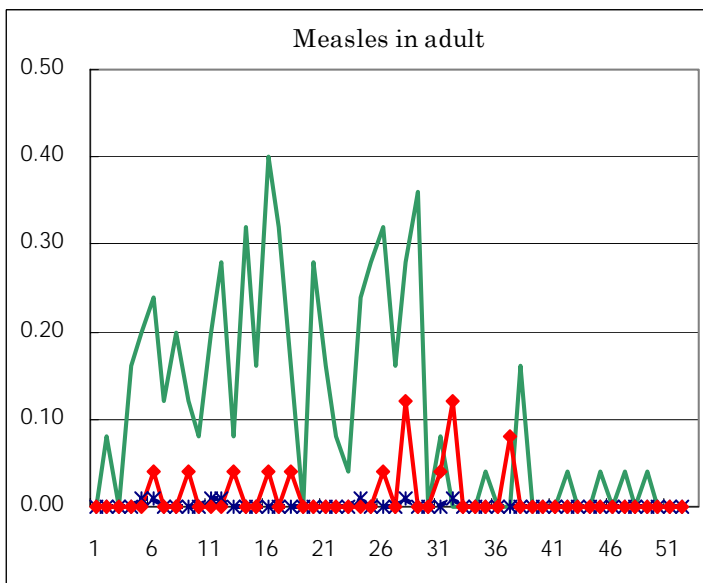
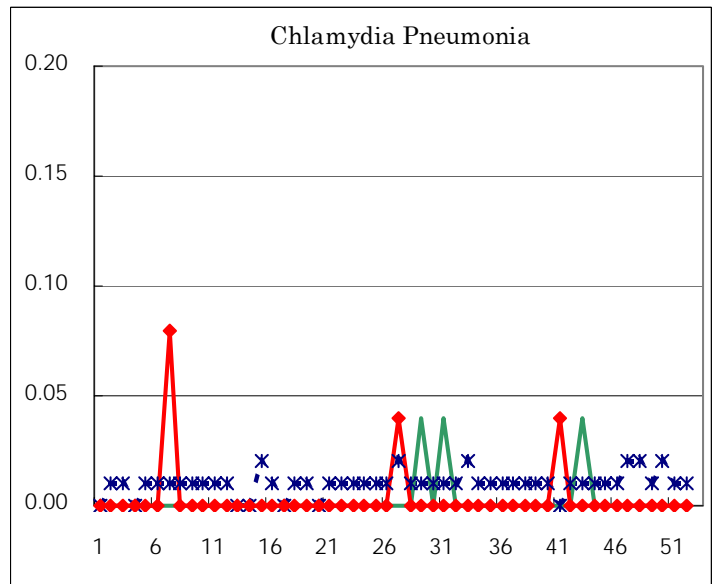
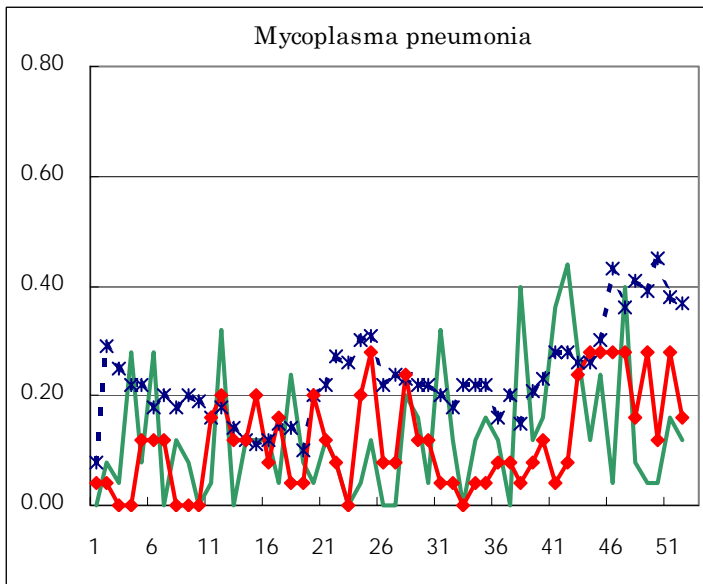
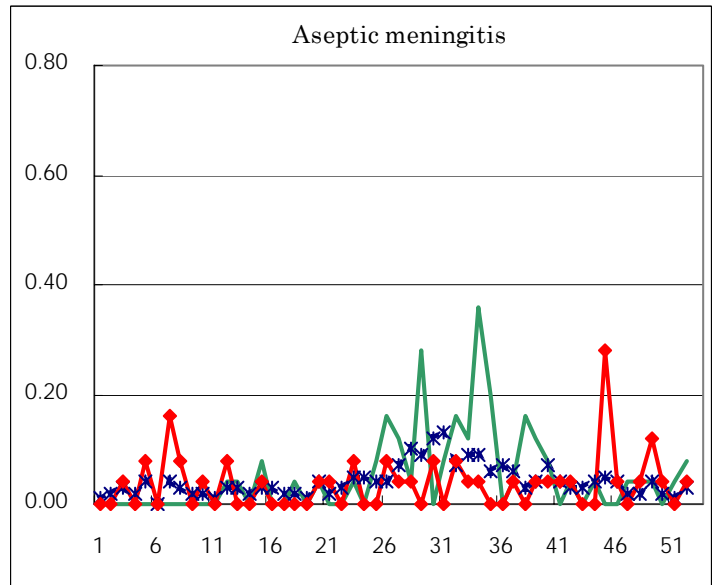
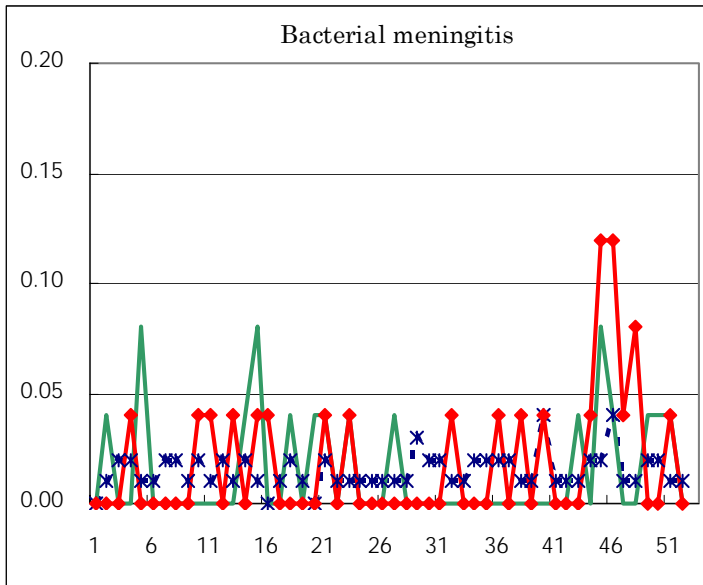
( Blank means 0. )

# Disease Trend Graph (weekly reported cases per fixed-point in comparison)









Tokyo Metropolitan Government  
**Infectious Disease Surveillance Center**