

22 February 2005 / Number 6

- Number of patients with the diseases required notifying all the cases
- Number of patients with the diseases to be reported by the designated clinics and hospitals
- Disease trend graph (weekly reported cases per fixed-point in comparison)

## Surveillance System in Tokyo, Japan

### The diseases which all physicians must report

All physicians must report to health centers the incidence of the diseases which are shown at page one. Health centers electronically report the individual case to Tokyo Metropolitan Infectious Disease Surveillance Center.

### Fixed-point surveillance

The numbers of patients who visit designated clinics or hospitals during a week are reported to health centers ( There are 37 in Tokyo). And they electronically report the numbers to Tokyo Metropolitan Infectious Disease Surveillance Center. We have about 200 fixed points (clinics and hospitals) in Tokyo.

1<sup>st</sup> Week is early January and 52<sup>nd</sup> Week is end of December.

Tokyo Metropolitan Infectious Disease Surveillance Center  
Tokyo Metropolitan Institute of Public Health

TEL:81-3-3363-3213 FAX:81-3-5332-7365  
e-mail: [idsc@tokyo-eiken.go.jp](mailto:idsc@tokyo-eiken.go.jp)  
URL: [idsc.tokyo-eiken.go.jp/](http://idsc.tokyo-eiken.go.jp/)

## Number of patients with the diseases which all physicians must report

Category	Diseases	Tokyo				Japan		
		3rd	4th	5th	6th	Total	6th	Total
I	Ebola hemorrhagic fever							
	Crimean-Congo hemorrhagic fever							
	Severe acute respiratory syndrome							
	Smallpox							
	Plague							
	Marburg disease							
	Lassa fever							
II	Acute poliomyelitis							
	Cholera							8
	Shigellosis	1	5	3		15	4	53
	Diphtheria							
	Typhoid fever							5
	Paratyphoid fever		1			1	1	2
III	Enterohemorrhagic <i>Escherichia coli</i> infection	1	2	1		4	3	55
IV	Hepatitis E			1		1	(2)	(5)
	West Nile fever							
	Hepatitis A		2	1	1	4	(4)	(20)
	Echinococcosis							
	Yellow fever							
	Psittacosis	1				2	1	8
	Relapsing fever							
	Q fever							1
	Rabies							
	High pathogenic avian influenza							
	Coccidioidomycosis							
	Monkeypox							
	Hemorrhagic fever with renal syndrome							
	Anthrax							
	Scrub typhus (Tsutsugamushi disease)					2		20
	Dengue fever							3
	Nipah virus infection							
	Japanese spotted fever							
	Japanese encephalitis							
	Hantavirus pulmonary syndrome							
	B virus disease							
	Brucellosis							
	Epidemic typhus							
Botulism				1	1			
Malaria	1			1	2		7	
Tularemia								
Lyme disease								
Lyssavirus infection								
Legionellosis	1			1	3	3	17	
Leptospirosis								
V	Amebiasis	4	6	3	7	21	11	76
	Acute viral hepatitis(excluding Hepatitis A,Hepatitis E)		1	1	1	5	5	35
	Acute encephalitis			1		1	(3)	(12)
	Cryptosporidiosis							1
	Creutzfeldt-Jakob Disease		1			1	1	16
	Sever invasive streptococcal infections					1	1	11
	Acquired immunodeficiency syndrome	5	9	12	10	48	7	112
	Giardiasis							5
	Meningococcal meningitis		1			1		1
	Congenital rubella syndrome							
	Syphilis	2	3	5	1	12	6	54
	Tetanus						1	6
	Vancomycin-resistant <i>Staphylococcus aureus</i> infection							
	Vancomycin-resistant <i>enterococcus</i> infection		2	1		3	2	8

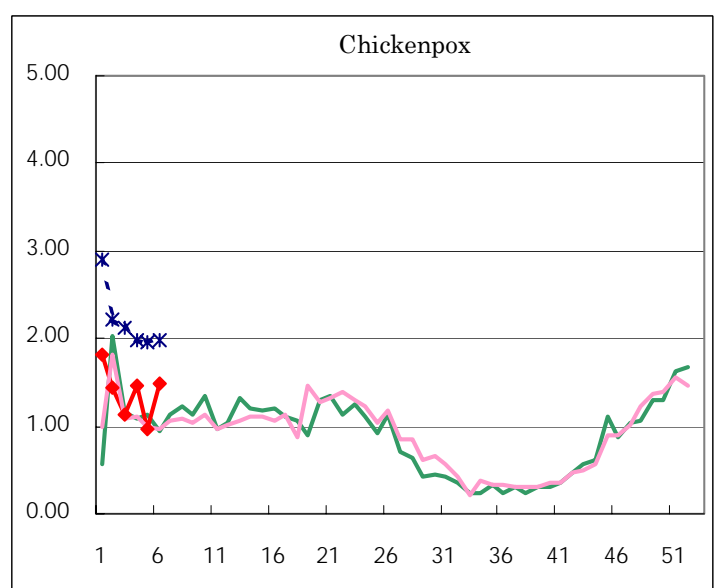
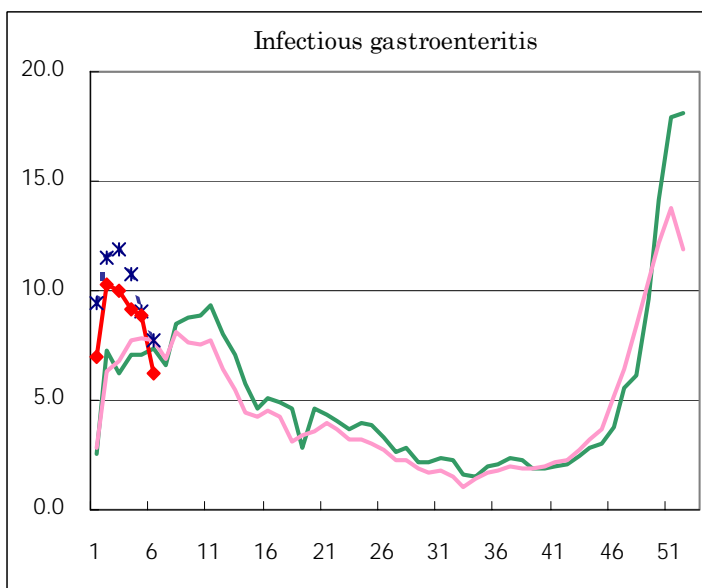
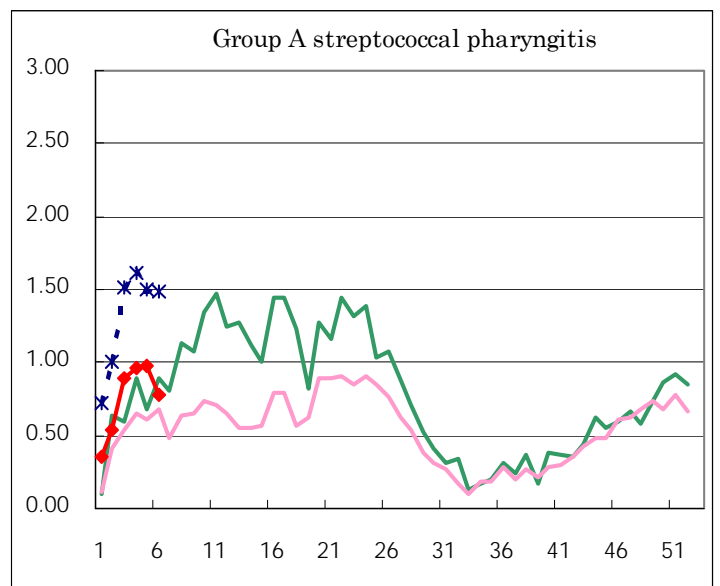
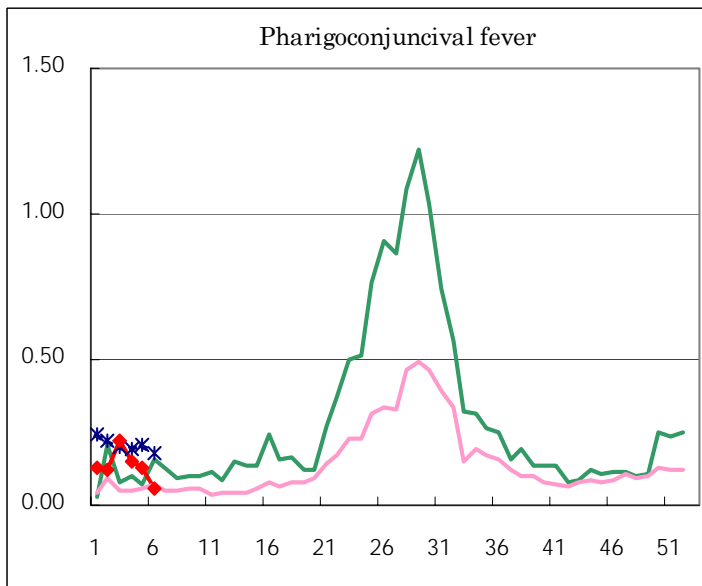
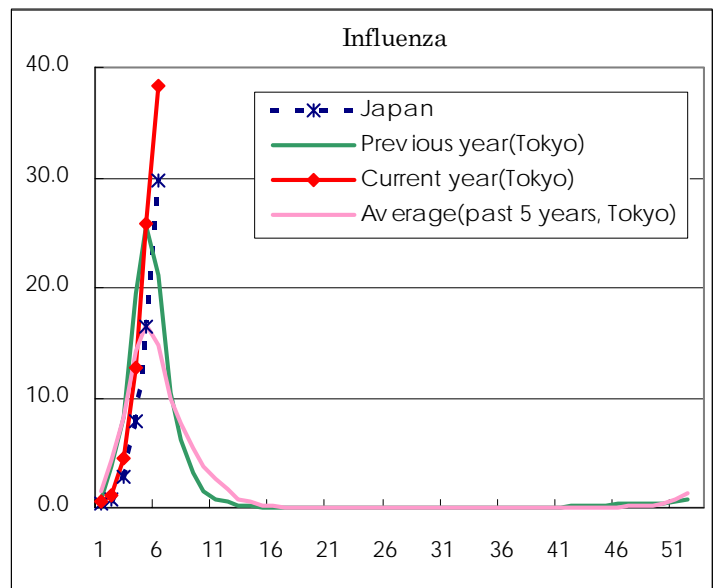
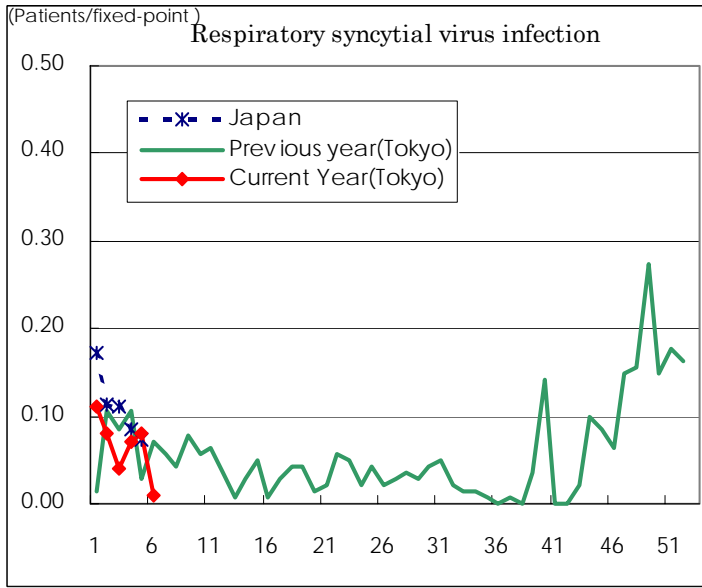
( Blank means 0. )

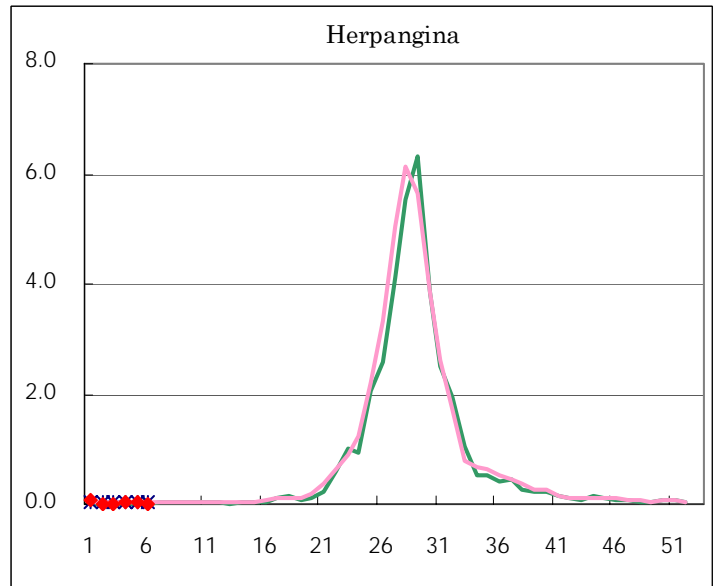
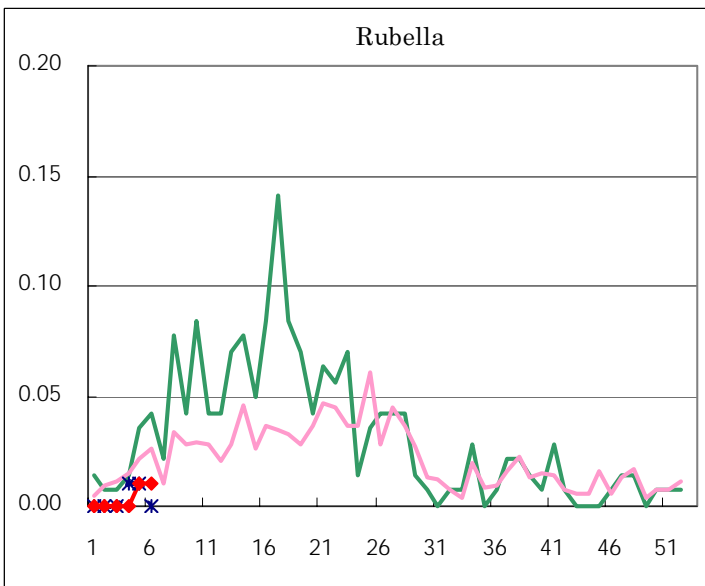
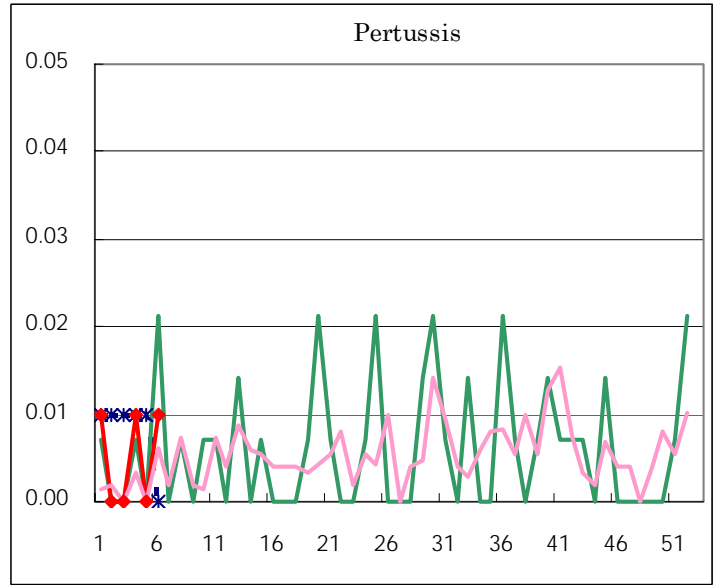
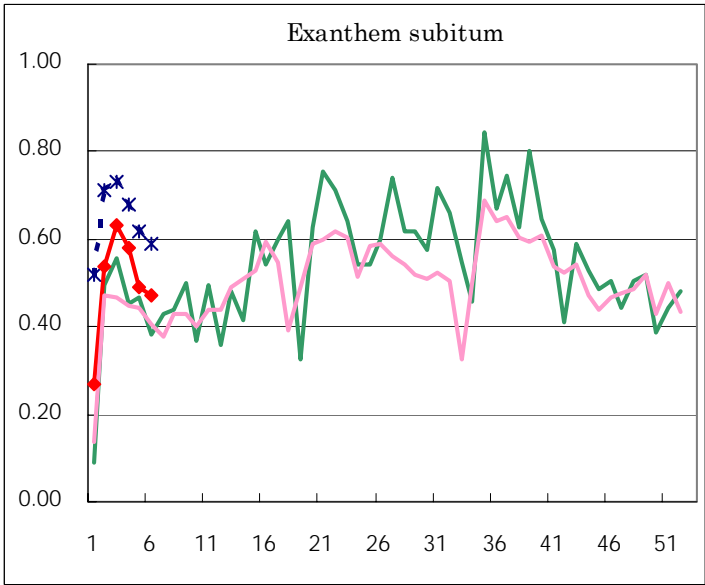
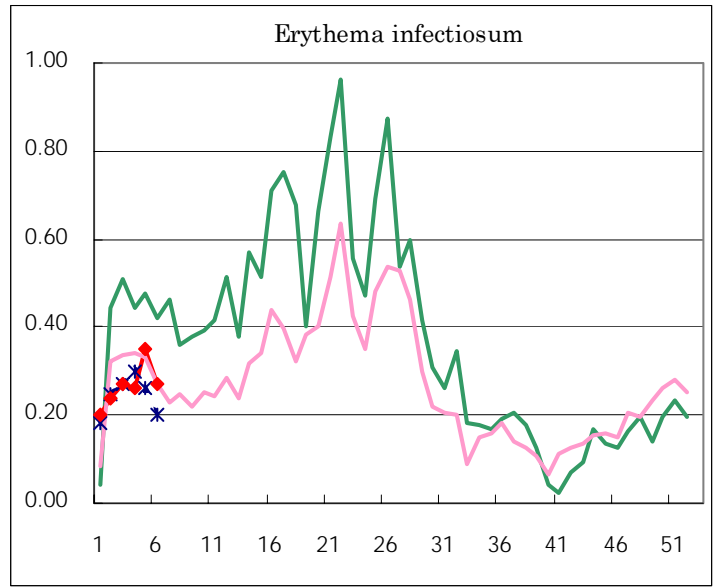
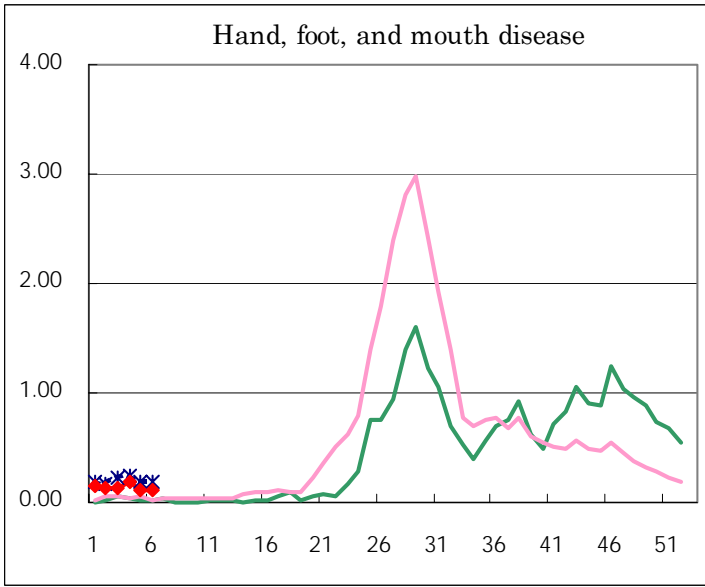
Number of patients with the diseases to be reported  
by the designated clinics and hospitals

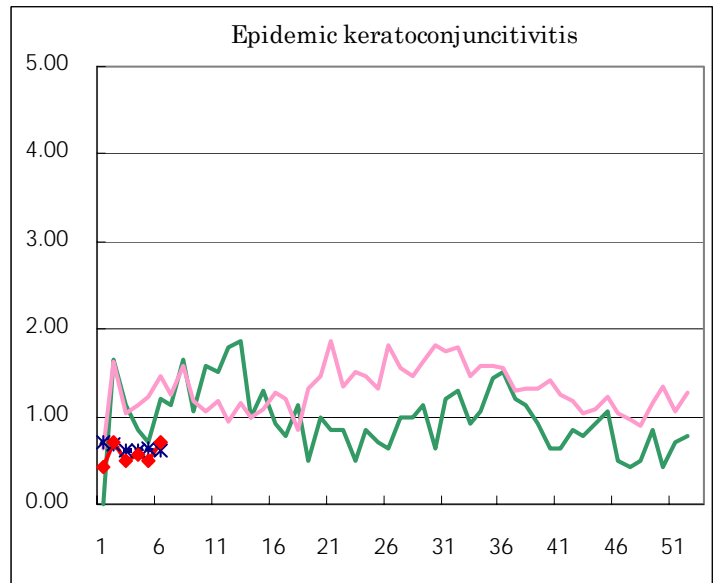
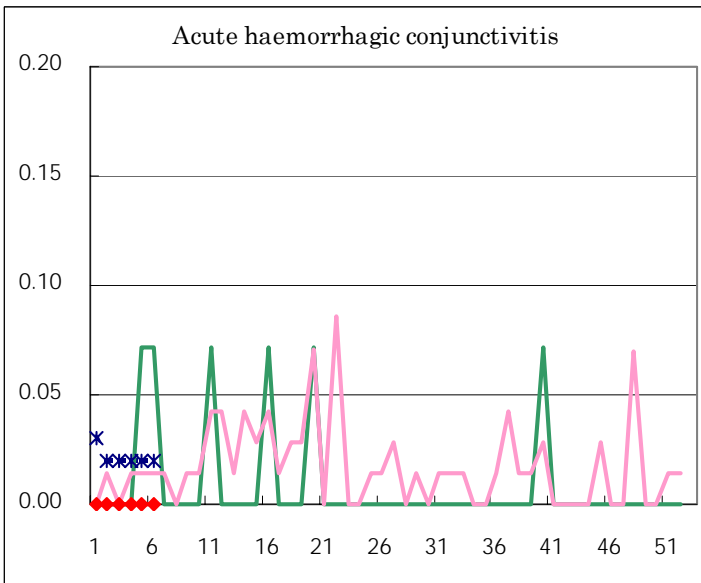
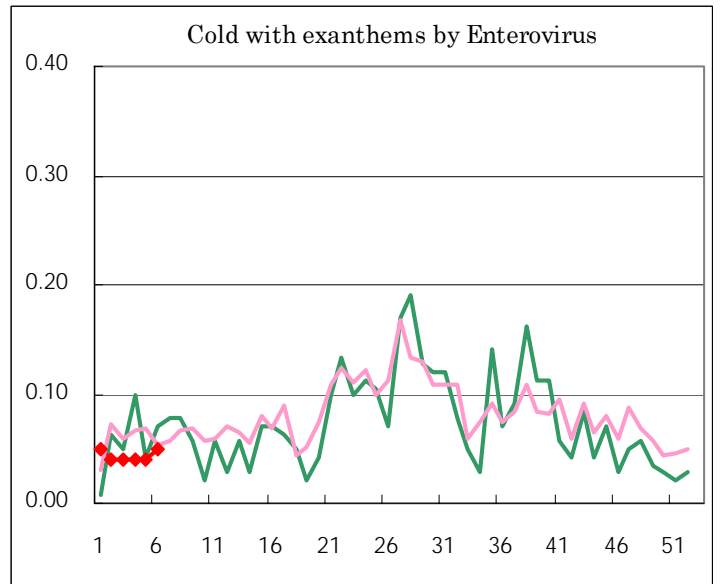
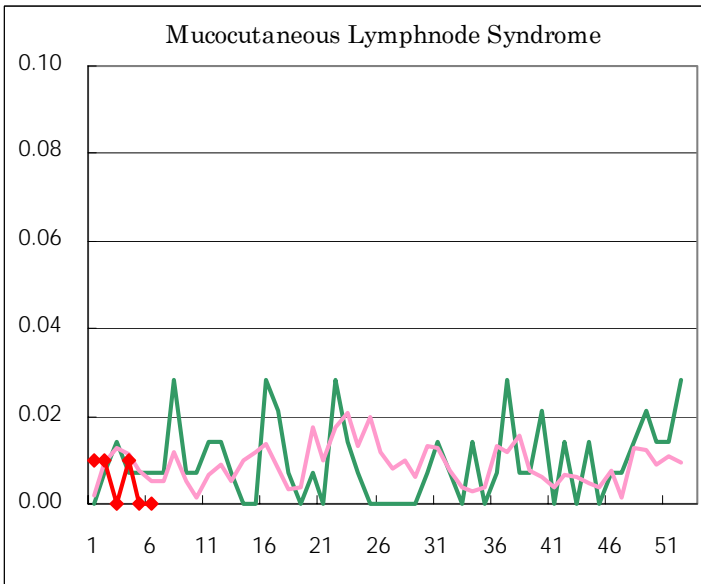
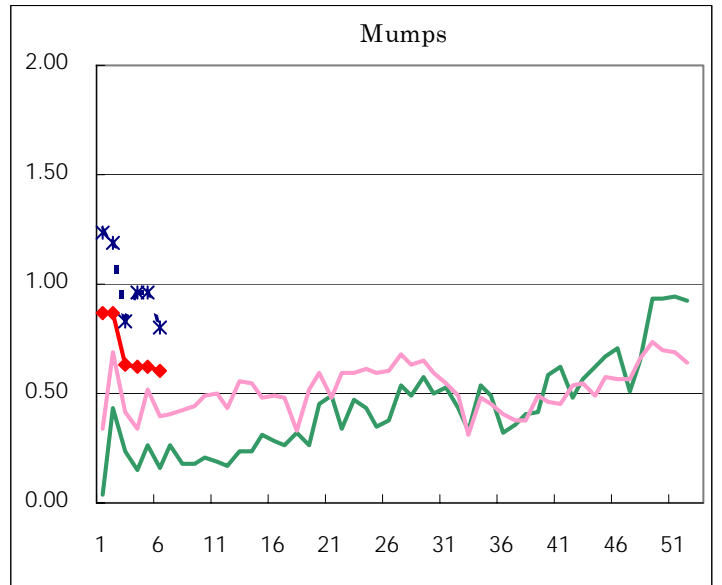
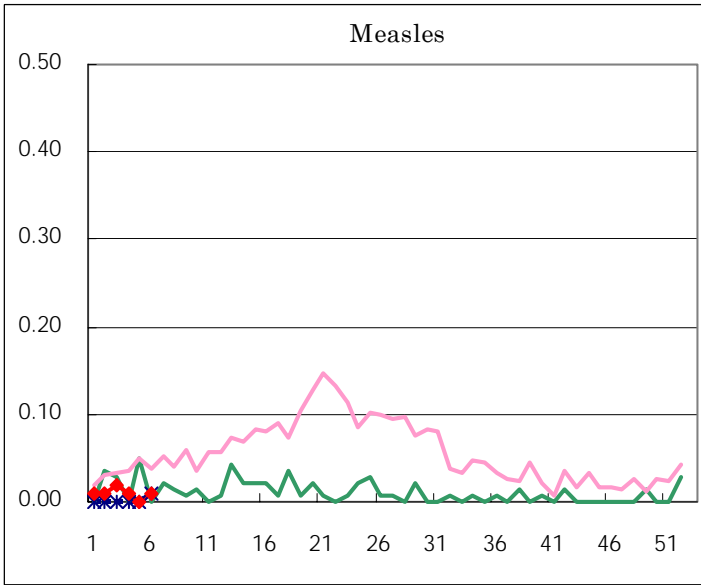
Diseases	Sex	2005				Total
		3rd	4th	5th	6th	
Respiratory syncytial virus infection	M	3	6	7	1	17
	F	3	4	4		11
Influenza	M	433	1,117	2,355	3,428	7,333
	F	372	1,132	2,241	3,377	7,122
Pharygoconjunctival fever	M	15	12	10	7	44
	F	16	9	8	2	35
Group A streptococcal pharyngitis	M	63	74	73	51	261
	F	63	62	66	60	251
Infectious gastroenteritis	M	704	644	620	452	2,420
	F	711	649	635	435	2,430
Chickenpox	M	85	99	75	112	371
	F	77	110	63	98	348
Hand, foot, and mouth disease	M	11	13	6	8	38
	F	8	13	9	7	37
Erythema infectiosum	M	20	15	25	24	84
	F	18	22	24	15	79
Exanthem subitum	M	41	49	33	30	153
	F	49	33	37	37	156
Pertussis	M		1			1
	F		1		1	2
Rubella	M			1		1
	F				1	1
Herpangina	M		3	3		6
	F	2	1		2	5
Measles	M	3			1	4
	F		1		1	2
Mumps	M	50	48	55	52	205
	F	40	40	33	33	146
Cold with exanthems by Enterovirus	M	2	3	1	4	10
	F	4	3	5	3	15
Mucocutaneous Lymphnode Syndrome	M		1			1
	F		1			1
Acute hemorrhagic conjunctivitis	M					
	F					
Epidemic keratoconjunctivitis	M	5	3	4	4	16
	F	2	5	3	6	16
Bacterial meningitis	M		1	1		2
	F					
Aseptic meningitis	M					
	F					
Mycoplasma pneumonia	M		2	2	1	5
	F		3	1	1	5
Chlamydial pneumonia (excluding psittacosis)	M					
	F					
Measles in adults	M					
	F					

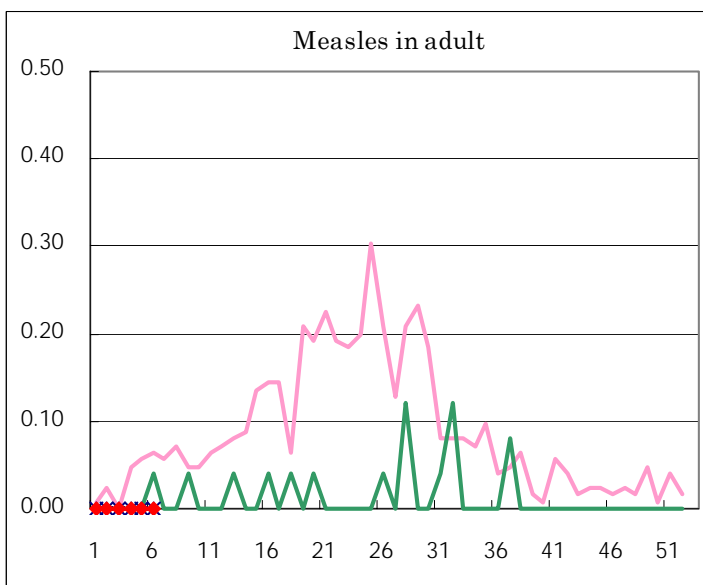
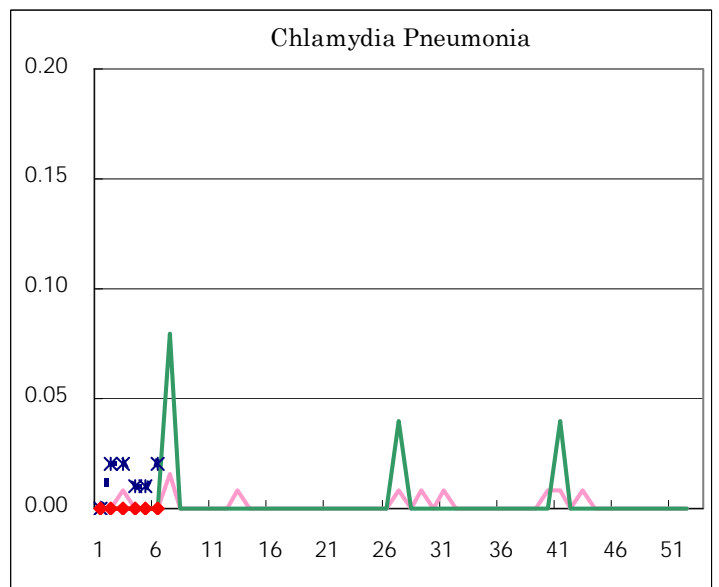
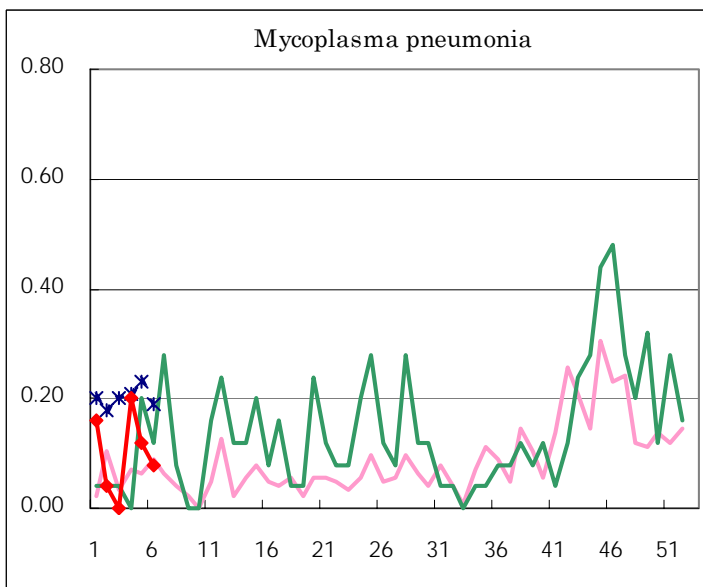
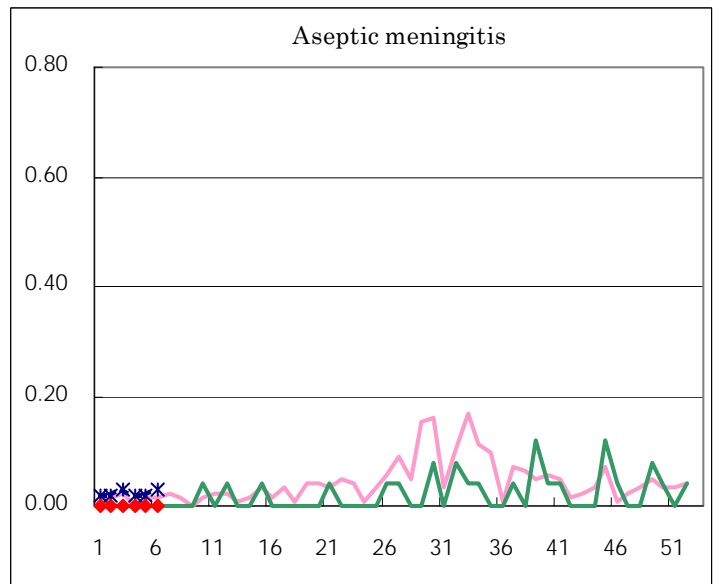
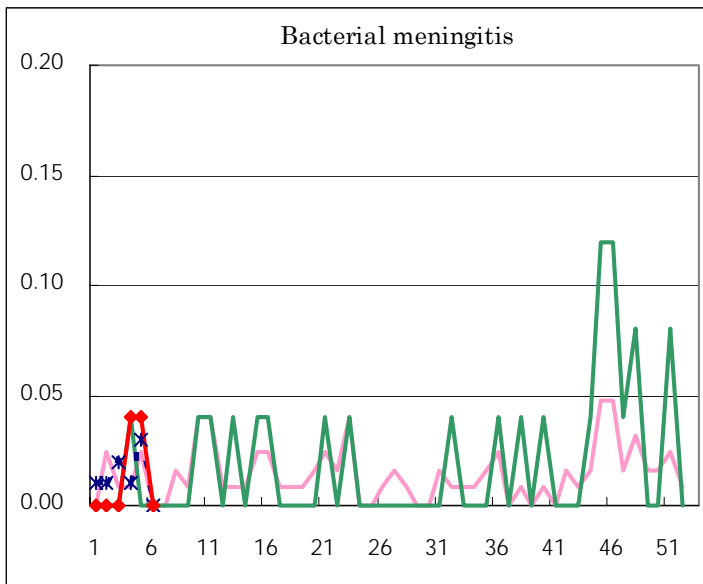
( Blank means 0. )

# Disease Trend Graph (weekly reported cases per fixed-point in comparison)









Tokyo Metropolitan Government  
**Infectious Disease Surveillance Center**