

INFECTIOUS DISEASES WEEKLY REPORT

# TOKYO IDWR

Tokyo Metropolitan Institute of Public Health

29 March 2005 / Number 11

- Number of patients with the diseases required notifying all the cases
- Number of patients with the diseases to be reported by the designated clinics and hospitals
- Disease trend graph (weekly reported cases per fixed-point in comparison)

## Surveillance System in Tokyo, Japan

### The diseases which all physicians must report

All physicians must report to health centers the incidence of the diseases which are shown at page one. Health centers electronically report the individual case to Tokyo Metropolitan Infectious Disease Surveillance Center.

### Fixed-point surveillance

The numbers of patients who visit designated clinics or hospitals during a week are reported to health centers ( There are 37 in Tokyo). And they electronically report the numbers to Tokyo Metropolitan Infectious Disease Surveillance Center. We have about 200 fixed points (clinics and hospitals) in Tokyo.

1<sup>st</sup> Week is early January and 52<sup>nd</sup> Week is end of December.

Tokyo Metropolitan Infectious Disease Surveillance Center  
Tokyo Metropolitan Institute of Public Health

TEL:81-3-3363-3213 FAX:81-3-5332-7365  
e-mail:[idsc@tokyo-eiken.go.jp](mailto:idsc@tokyo-eiken.go.jp)  
URL:[idsc.tokyo-eiken.go.jp/](http://idsc.tokyo-eiken.go.jp/)

## Number of patients with the diseases which all physicians must report

Category	Diseases	Tokyo				Total	Japan	
		8th	9th	10th	11th		11th	Total
I	Ebola hemorrhagic fever							
	Crimean-Congo hemorrhagic fever							
	Severe acute respiratory syndrome							
	Smallpox							
	Plague							
	Marburg disease							
	Lassa fever							
II	Acute poliomyelitis							
	Cholera							8
	Shigellosis		1	3		20	<b>8</b>	130
	Diphtheria							
	Typhoid fever		1			2	<b>2</b>	12
	Paratyphoid fever					1		2
III	Enterohemorrhagic <i>Escherichia coli</i> infection				<b>2</b>	7	<b>13</b>	124
IV	Hepatitis E			2		3	<b>(1)</b>	(10)
	West Nile fever							
	Hepatitis A				<b>1</b>	5		(43)
	Echinococcosis							5
	Yellow fever							
	Psittacosis					2		14
	Relapsing fever							
	Q fever							1
	Rabies							
	High pathogenic avian influenza							
	Coccidioidomycosis							
	Monkeypox							
	Hemorrhagic fever with renal syndrome							
	Anthrax							
	Scrub typhus (Tsutsugamushi disease)			1		3		22
	Dengue fever			1	<b>1</b>	2	<b>1</b>	7
	Nipah virus infection							
	Japanese spotted fever							
	Japanese encephalitis							
	Hantavirus pulmonary syndrome							
	B virus disease							
	Brucellosis							
	Epidemic typhus							
Botulism					1			
Malaria				<b>1</b>	3	<b>2</b>	16	
Tularemia								
Lyme disease								
Lyssavirus infection								
Legionellosis					3	<b>3</b>	25	
Leptospirosis					1		(1)	
V	Amebiasis	3		1	<b>5</b>	34	<b>7</b>	131
	Acute viral hepatitis(excluding Hepatitis A,Hepatitis E)		2			9	<b>2</b>	74
	Acute encephalitis		3		<b>1</b>	7	<b>(5)</b>	(51)
	Cryptosporidiosis			1		1		3
	Creutzfeldt-Jakob Disease	1	1		<b>1</b>	5	<b>2</b>	29
	Sever invasive streptococcal infections					2		18
	Acquired immunodeficiency syndrome	7	11	11	<b>5</b>	86	<b>8</b>	224
	Giardiasis		1			1		11
	Meningococcal meningitis					1		2
	Congenital rubella syndrome							
	Syphilis	1	1	2	<b>4</b>	22	<b>4</b>	107
	Tetanus							11
	Vancomycin-resistant <i>Staphylococcus aureus</i> infection							
	Vancomycin-resistant <i>enterococcus</i> infection					4		15

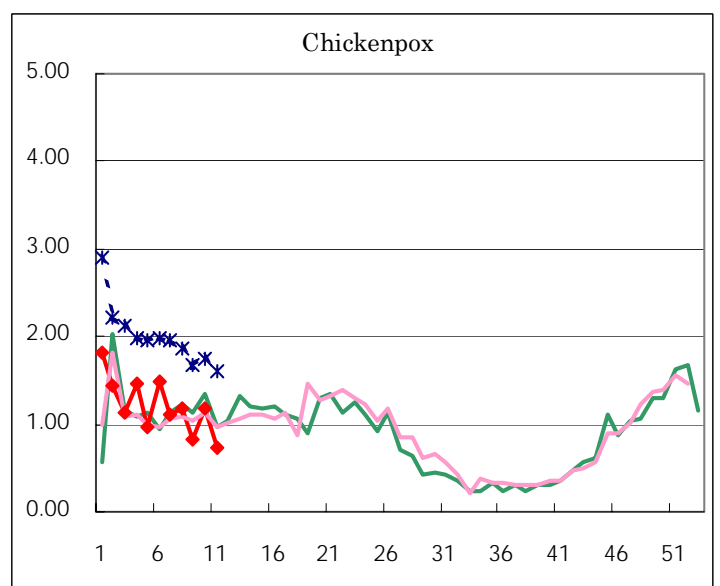
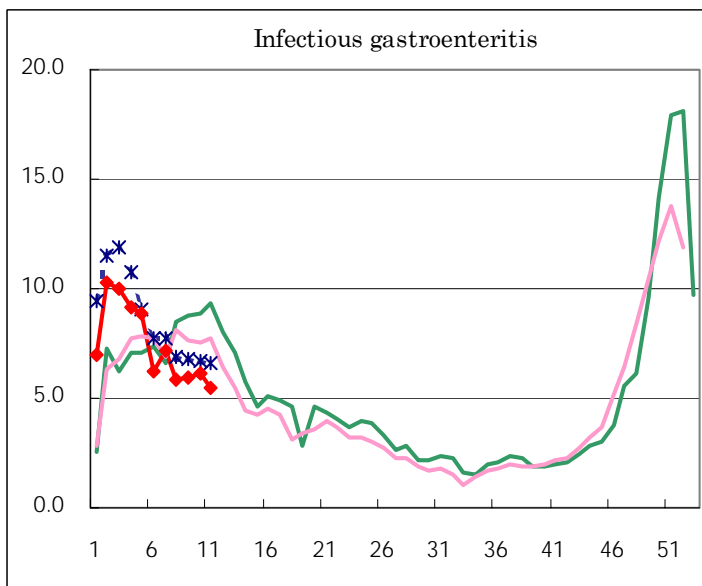
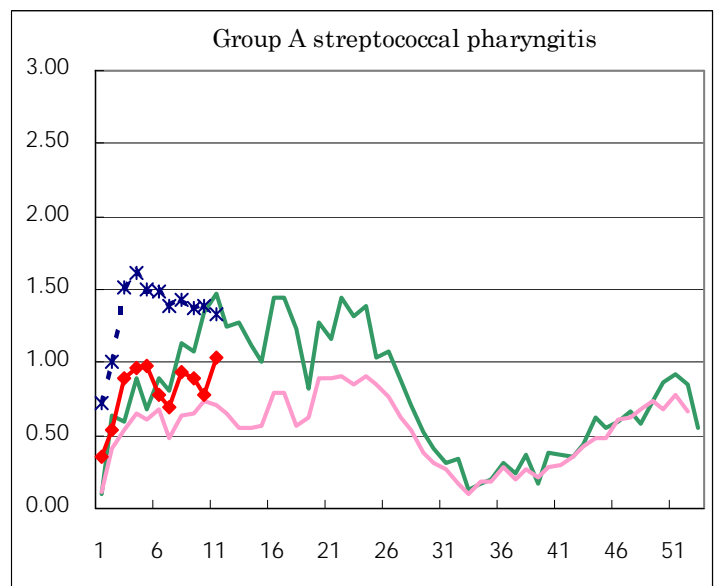
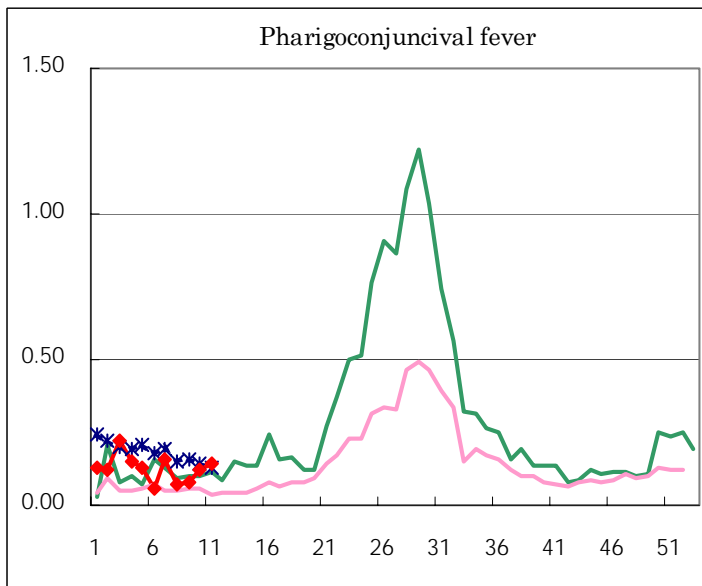
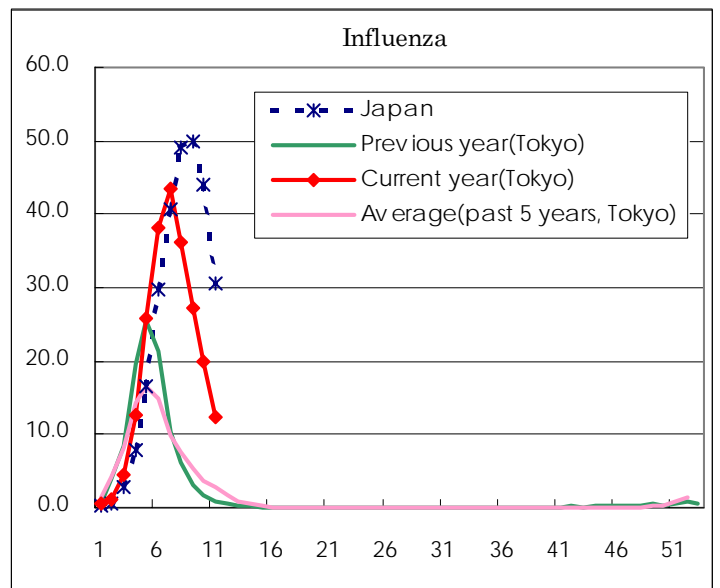
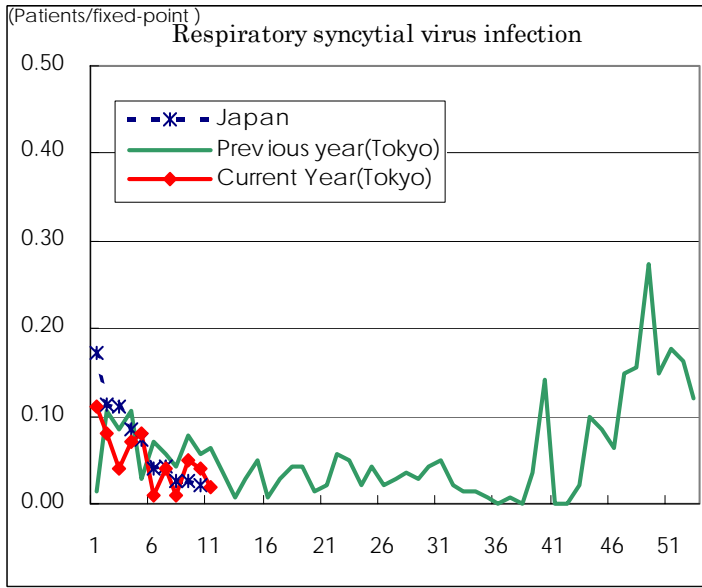
( Blank means 0. )

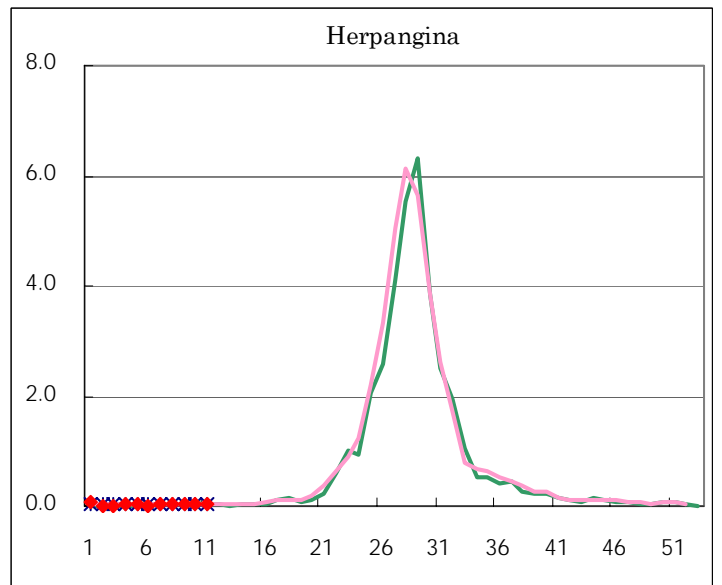
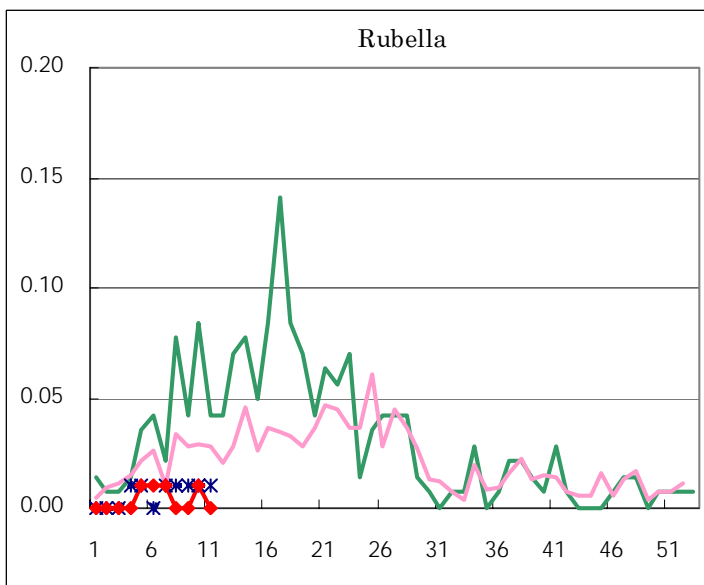
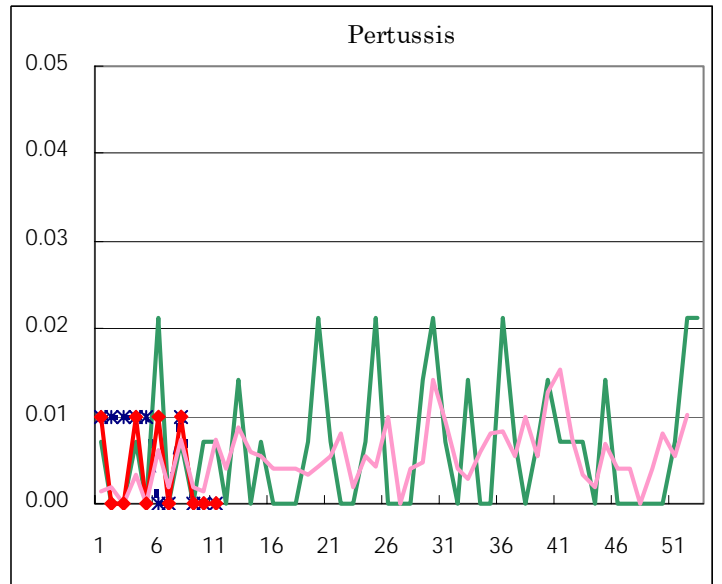
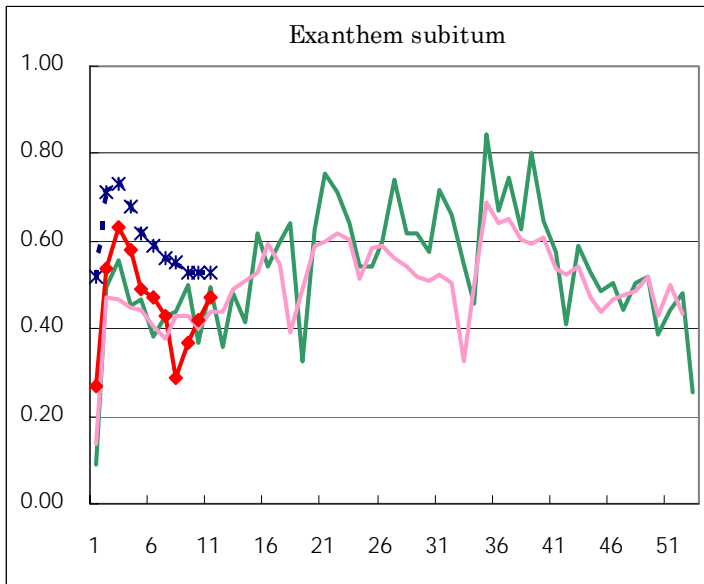
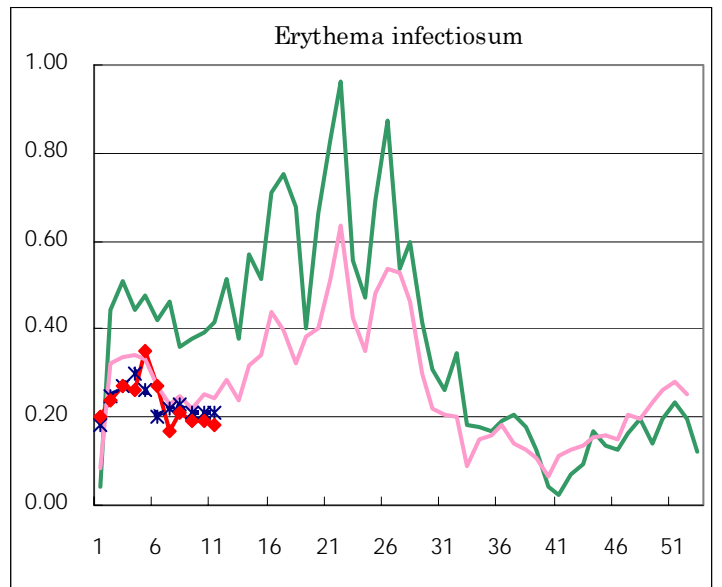
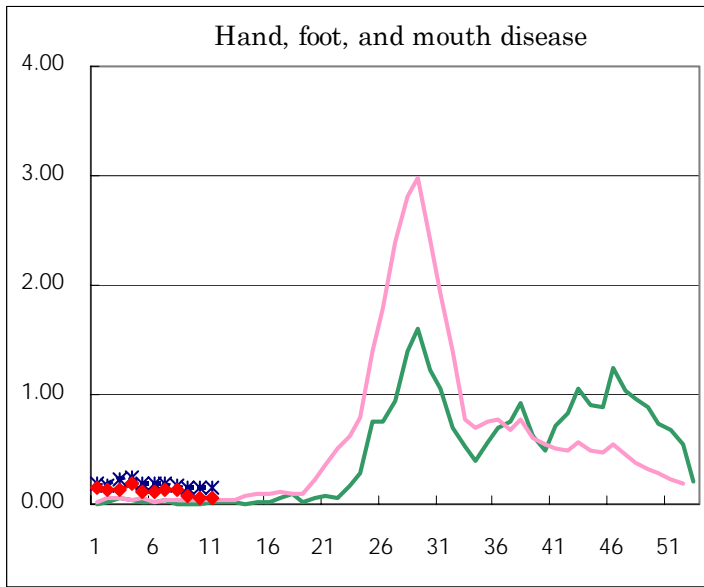
Number of patients with the diseases to be reported  
by the designated clinics and hospitals

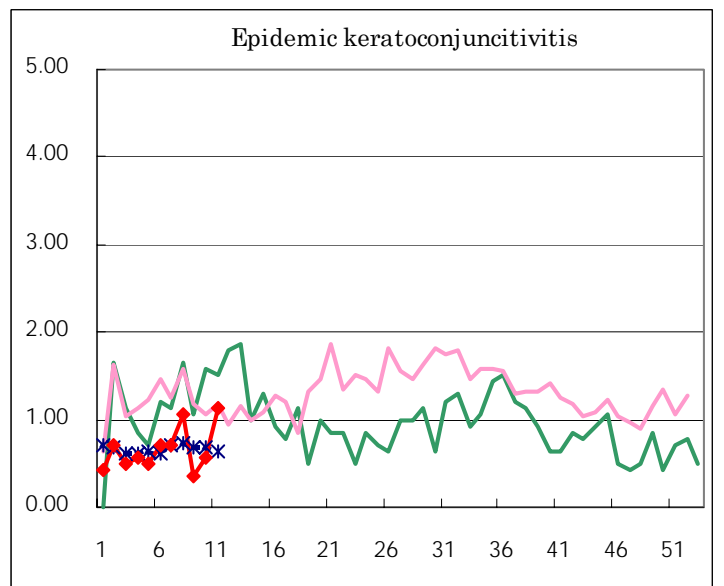
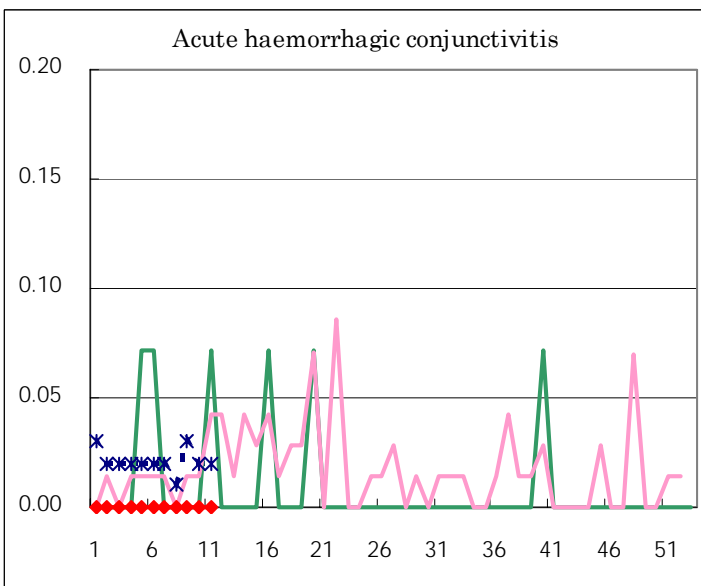
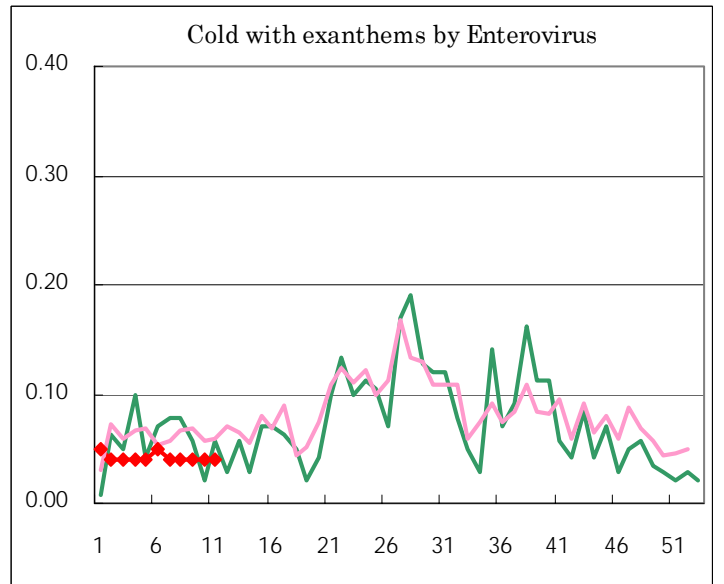
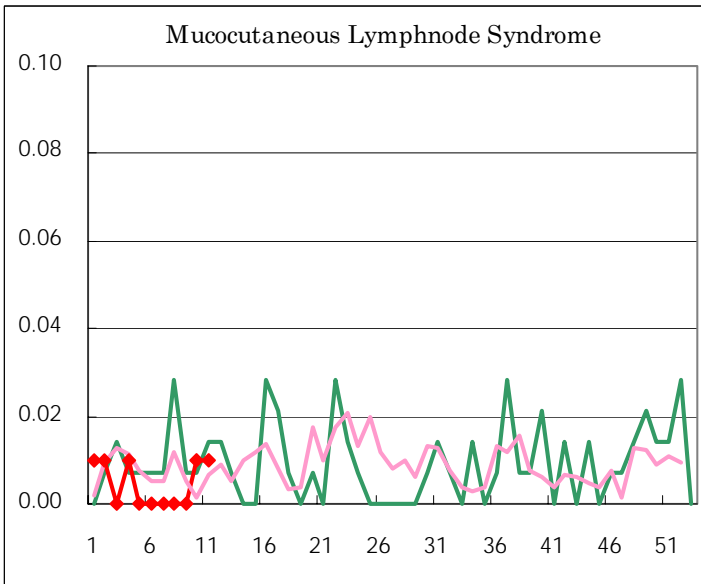
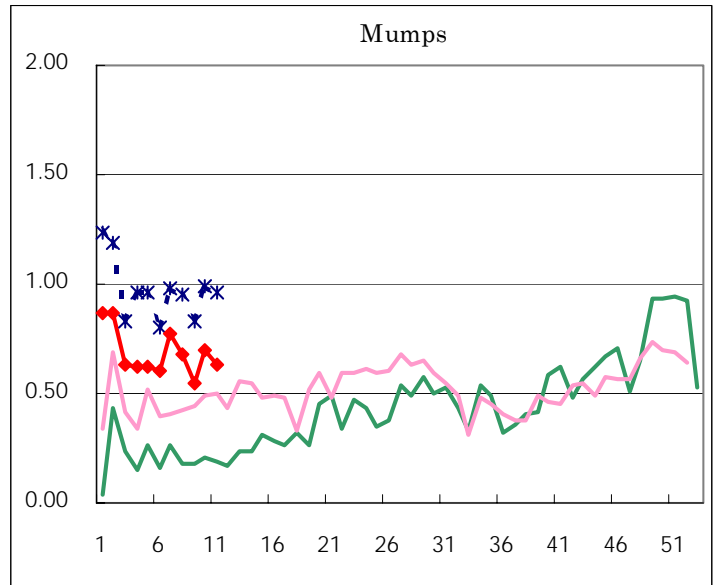
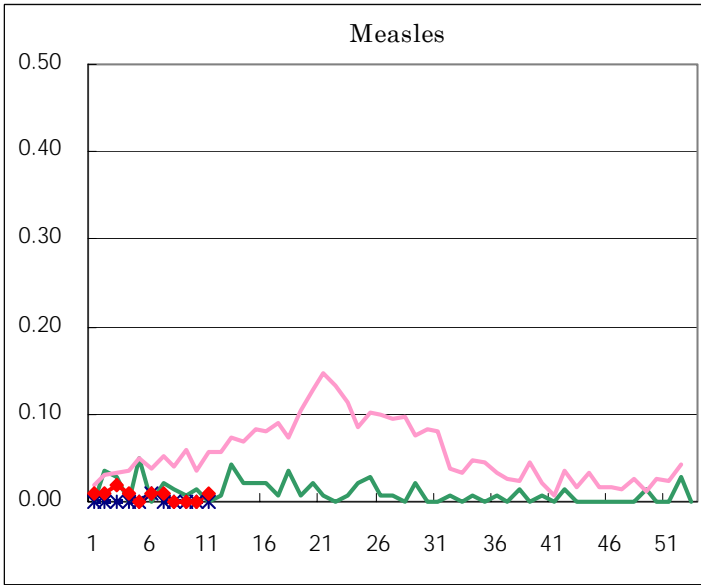
Diseases	Sex	2005				Total
		8th	9th	10th	11th	
Respiratory syncytial virus infection	M	1	5	3	<b>2</b>	11
	F	1	2	3	<b>1</b>	7
Influenza	M	3,128	2,384	1,728	<b>1,024</b>	8,264
	F	3,305	2,445	1,803	<b>1,188</b>	8,741
Pharygoconjunctival fever	M	4	4	7	<b>9</b>	24
	F	6	8	10	<b>11</b>	35
Group A streptococcal pharyngitis	M	74	75	56	<b>78</b>	283
	F	60	51	55	<b>69</b>	235
Infectious gastroenteritis	M	447	433	450	<b>389</b>	1,719
	F	382	418	419	<b>394</b>	1,613
Chickenpox	M	93	62	84	<b>53</b>	292
	F	73	54	85	<b>52</b>	264
Hand, foot, and mouth disease	M	12	5	4	<b>4</b>	25
	F	7	7	5	<b>4</b>	23
Erythema infectiosum	M	14	15	15	<b>10</b>	54
	F	16	12	12	<b>16</b>	56
Exanthem subitum	M	23	32	28	<b>32</b>	115
	F	18	21	31	<b>35</b>	105
Pertussis	M					
	F	1				1
Rubella	M					
	F			1		1
Herpangina	M	4	1	2	<b>2</b>	9
	F	2	4	2	<b>1</b>	9
Measles	M				<b>1</b>	1
	F					
Mumps	M	49	40	60	<b>48</b>	197
	F	48	38	40	<b>42</b>	168
Cold with exanthems by Enterovirus	M	4	4	4	<b>3</b>	15
	F	2	1	1	<b>3</b>	7
Mucocutaneous Lymphnode Syndrome	M				<b>1</b>	1
	F			1		1
Acute hemorrhagic conjunctivitis	M					
	F					
Epidemic keratoconjunctivitis	M	5	2	6	<b>10</b>	23
	F	10	3	2	<b>6</b>	21
Bacterial meningitis	M					
	F					
Aseptic meningitis	M				<b>2</b>	2
	F				<b>1</b>	1
Mycoplasma pneumonia	M	2			<b>1</b>	3
	F		2	2		4
Chlamydial pneumonia (excluding psittacosis)	M					
	F					
Measles in adults	M					
	F					

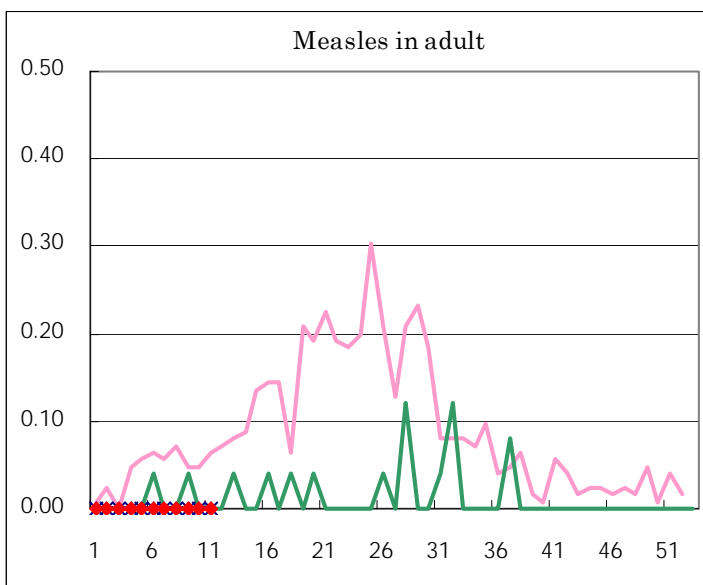
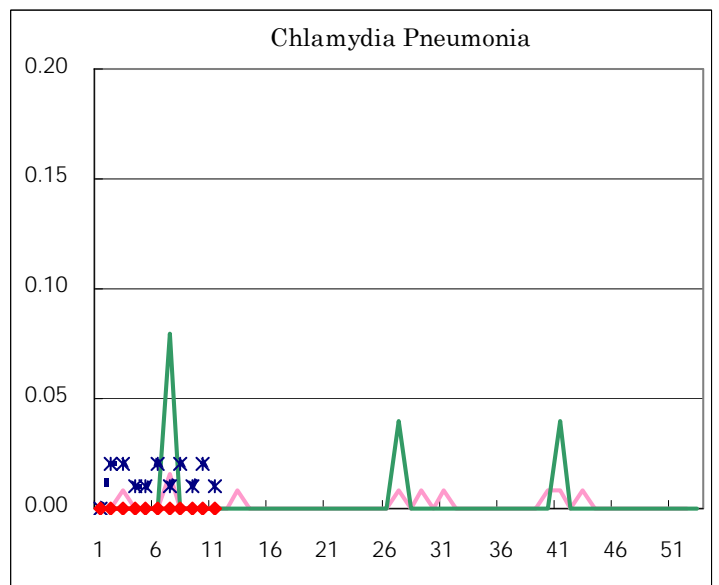
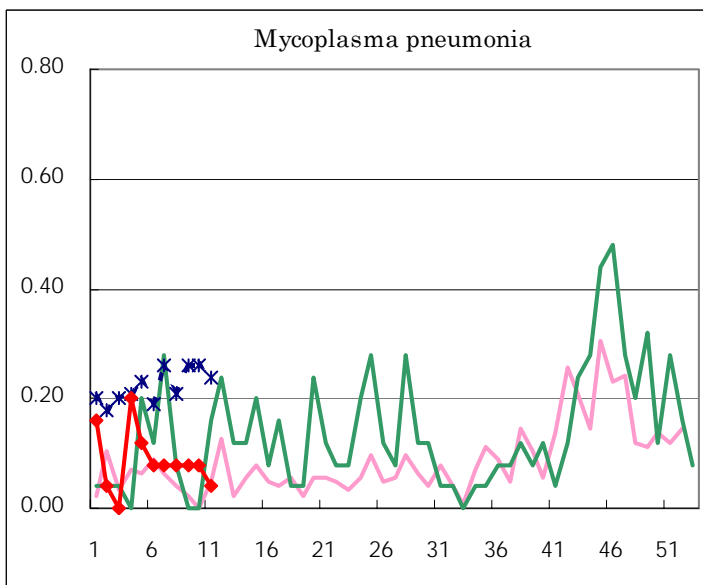
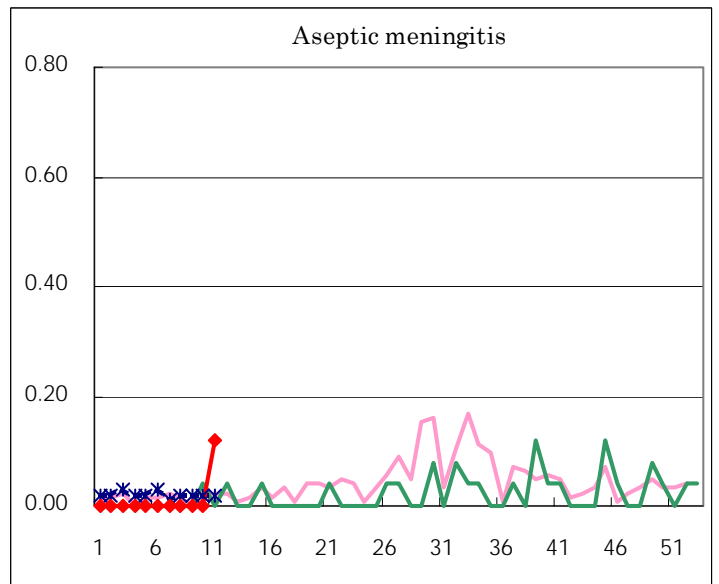
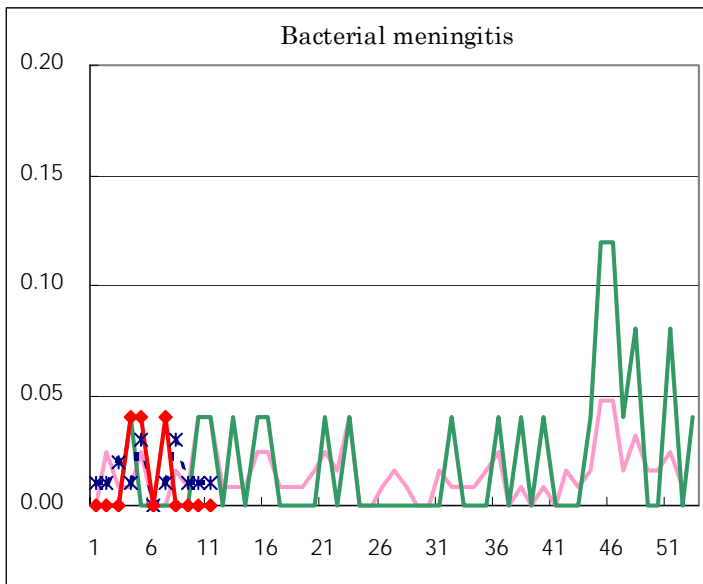
( Blank means 0. )

# Disease Trend Graph (weekly reported cases per fixed-point in comparison)









Tokyo Metropolitan Government  
**Infectious Disease Surveillance Center**