

INFECTIOUS DISEASES WEEKLY REPORT

TOKYO IDWR

Tokyo Metropolitan Institute of Public Health

17 May 2005 / Number 18

- Number of patients with the diseases required notifying all the cases
- Number of patients with the diseases to be reported by the designated clinics and hospitals
- Disease trend graph (weekly reported cases per fixed-point in comparison)

Surveillance System in Tokyo, Japan

The diseases which all physicians must report

All physicians must report to health centers the incidence of the diseases which are shown at page one. Health centers electronically report the individual case to Tokyo Metropolitan Infectious Disease Surveillance Center.

Fixed-point surveillance

The numbers of patients who visit designated clinics or hospitals during a week are reported to health centers (There are 37 in Tokyo). And they electronically report the numbers to Tokyo Metropolitan Infectious Disease Surveillance Center. We have about 200 fixed points (clinics and hospitals) in Tokyo.

1st Week is early January and 52nd Week is end of December.

Tokyo Metropolitan Infectious Disease Surveillance Center
Tokyo Metropolitan Institute of Public Health

TEL:81-3-3363-3213 FAX:81-3-5332-7365
e-mail:idsc@tokyo-eiken.go.jp
URL:idsc.tokyo-eiken.go.jp/

Number of patients with the diseases which all physicians must report

| Category | Diseases | Tokyo | | | | Japan | | |
|----------------------|---|-------|------|------|------|-------|------|-------|
| | | 15th | 16th | 17th | 18th | Total | 18th | Total |
| I | Ebola hemorrhagic fever | | | | | | | |
| | Crimean-Congo hemorrhagic fever | | | | | | | |
| | Severe acute respiratory syndrome | | | | | | | |
| | Smallpox | | | | | | | |
| | Plague | | | | | | | |
| | Marburg disease | | | | | | | |
| | Lassa fever | | | | | | | |
| II | Acute poliomyelitis | | | | | | | |
| | Cholera | | | | | 2 | | 14 |
| | Shigellosis | | 1 | 2 | | 31 | 5 | 201 |
| | Diphtheria | | | | | | | |
| | Typhoid fever | | | | | 3 | | 20 |
| | Paratyphoid fever | | 1 | | | 2 | | 5 |
| III | Enterohemorrhagic <i>Escherichia coli</i> infection | | 3 | 1 | | 11 | 18 | 260 |
| IV | Hepatitis E | | | | | 4 | (1) | (20) |
| | West Nile fever | | | | | | | |
| | Hepatitis A | | 1 | 1 | | 8 | (2) | (75) |
| | Echinococcosis | | | | | | | 6 |
| | Yellow fever | | | | | | | |
| | Psittacosis | | | | | 2 | | 22 |
| | Relapsing fever | | | | | | | |
| | Q fever | | | | | | | 2 |
| | Rabies | | | | | | | |
| | High pathogenic avian influenza | | | | | | | |
| | Coccidioidomycosis | | | | | | | |
| | Monkeypox | | | | | | | |
| | Hemorrhagic fever with renal syndrome | | | | | | | |
| | Anthrax | | | | | | | |
| | Scrub typhus (Tsutsugamushi disease) | | | | | 3 | 3 | 27 |
| | Dengue fever | | 1 | 1 | | 4 | 2 | 12 |
| | Nipah virus infection | | | | | | | |
| | Japanese spotted fever | | | | | | 1 | 2 |
| | Japanese encephalitis | | | | | | | |
| | Hantavirus pulmonary syndrome | | | | | | | |
| | B virus disease | | | | | | | |
| | Brucellosis | | | | | | | |
| | Epidemic typhus | | | | | | | |
| Botulism | | | | | 1 | | | |
| Malaria | 1 | | | 1 | 5 | | 21 | |
| Tularemia | | | | | | | | |
| Lyme disease | | | | | | | | |
| Lyssavirus infection | | | | | | | | |
| Legionellosis | | 1 | | | 4 | 1 | 37 | |
| Leptospirosis | | | | | 1 | | (1) | |
| V | Amebiasis | 5 | 2 | 3 | 2 | 55 | 3 | 225 |
| | Acute viral hepatitis(excluding Hepatitis A,Hepatitis E) | 1 | | 2 | | 17 | | 98 |
| | Acute encephalitis | | | | | 9 | (2) | (93) |
| | Cryptosporidiosis | | | | | 1 | | 5 |
| | Creutzfeldt-Jakob Disease | | | | | 7 | | 48 |
| | Sever invasive streptococcal infections | | | | | 2 | 1 | 24 |
| | Acquired immunodeficiency syndrome | 7 | 3 | 3 | 2 | 115 | 5 | 332 |
| | Giardiasis | | 1 | | | 2 | | 17 |
| | Meningococcal meningitis | | | | | 1 | | |
| | Congenital rubella syndrome | | | | | | | |
| | Syphilis | | 2 | 1 | 1 | 29 | 1 | 158 |
| | Tetanus | | | | 1 | 1 | | 26 |
| | Vancomycin-resistant <i>Staphylococcus aureus</i> infection | | | | | | | |
| | Vancomycin-resistant <i>enterococcus</i> infection | 1 | | | | 5 | | 29 |

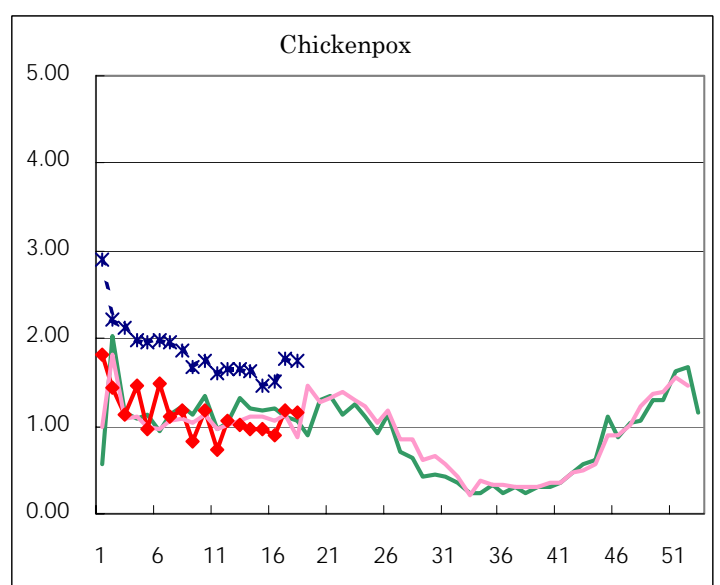
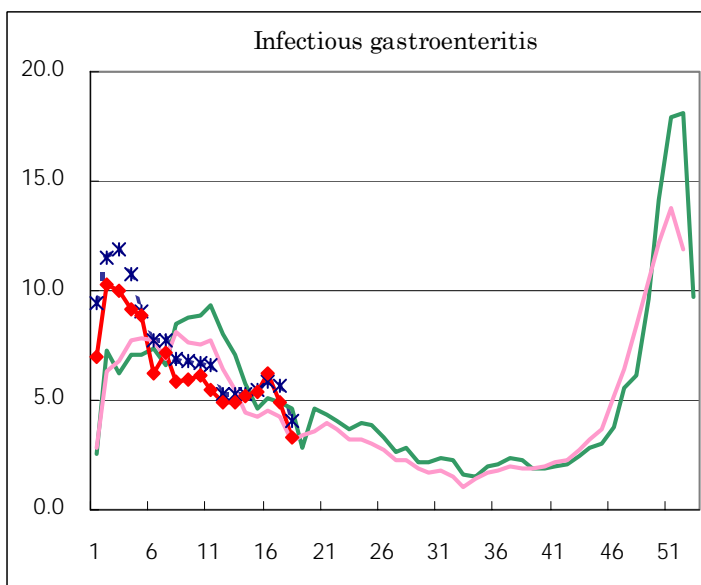
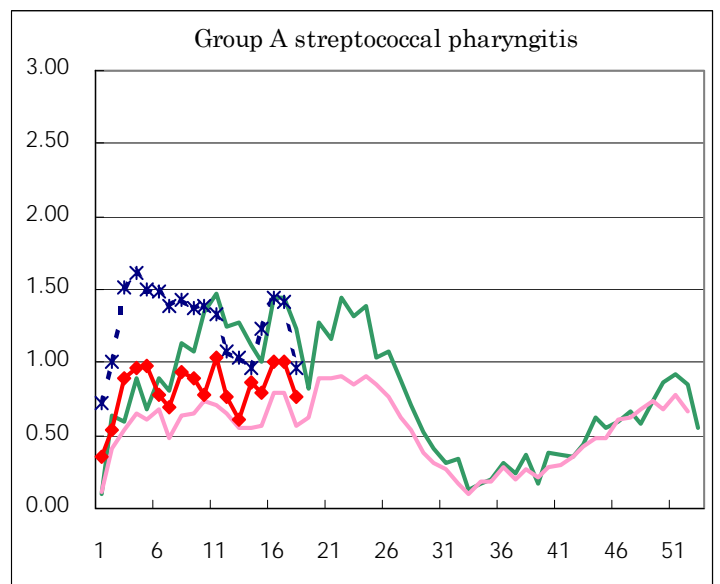
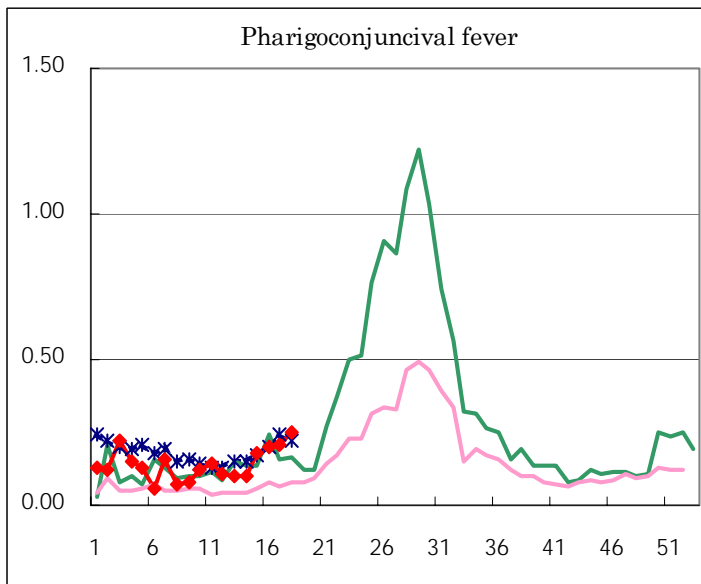
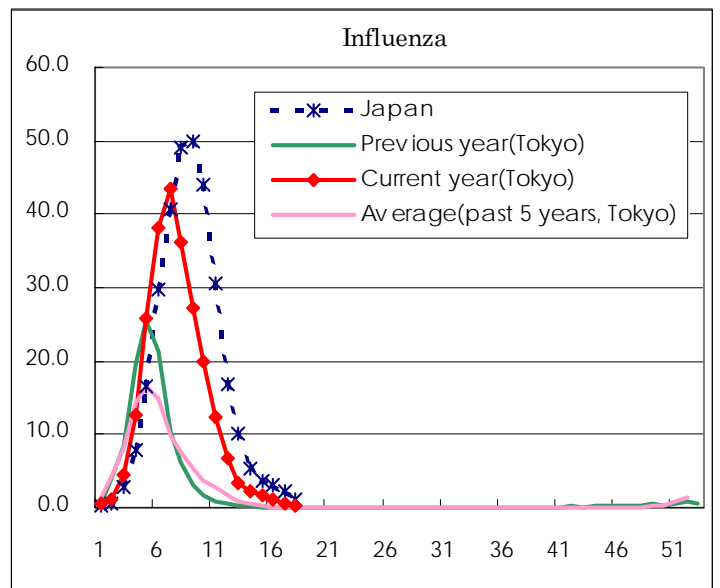
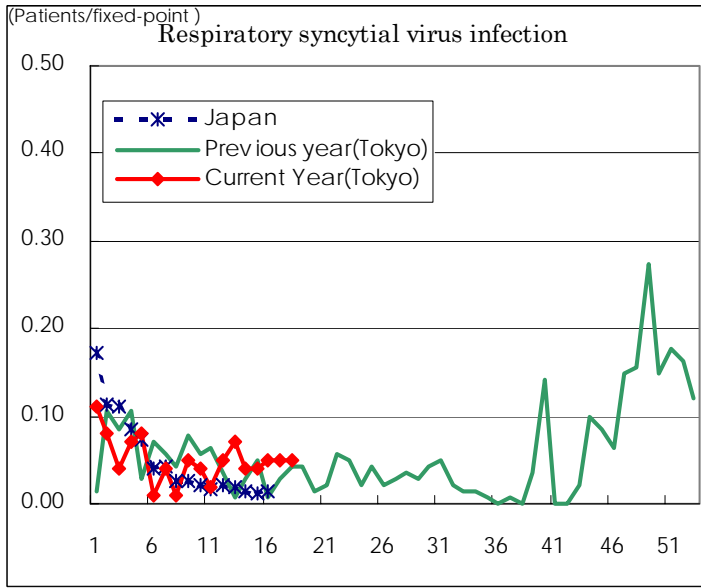
(Blank means 0.)

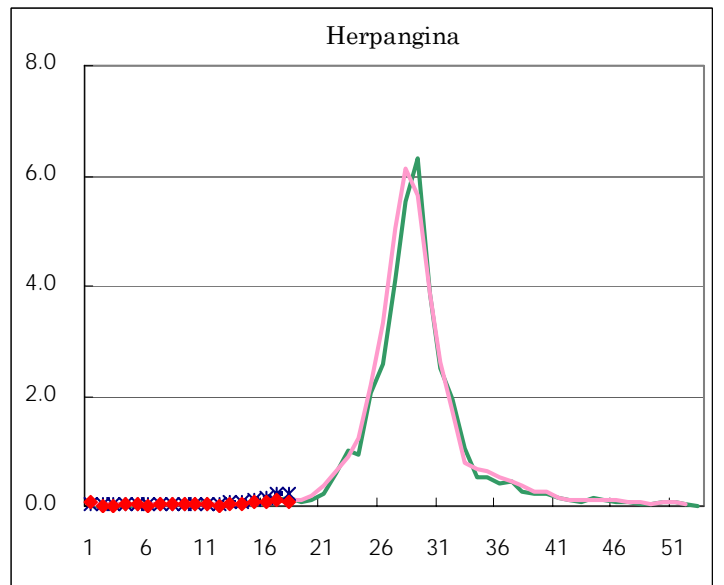
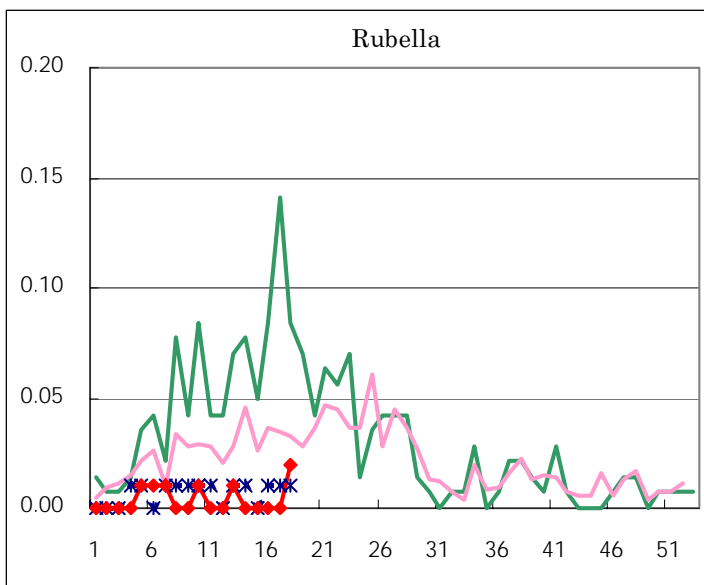
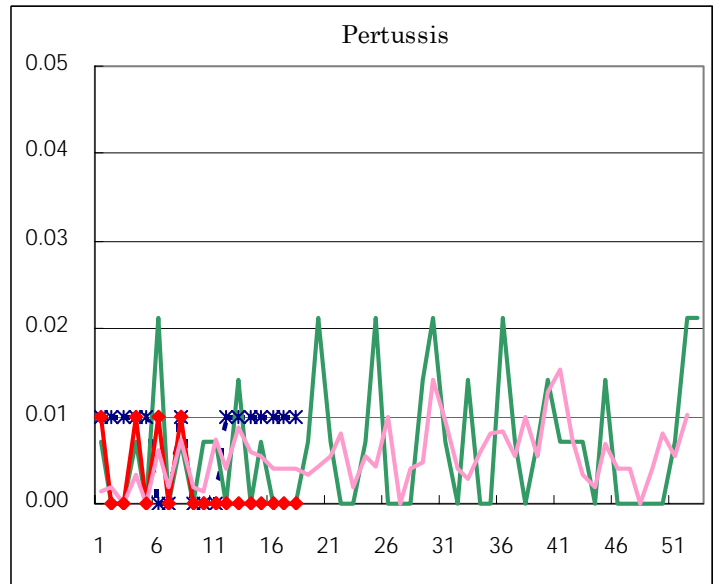
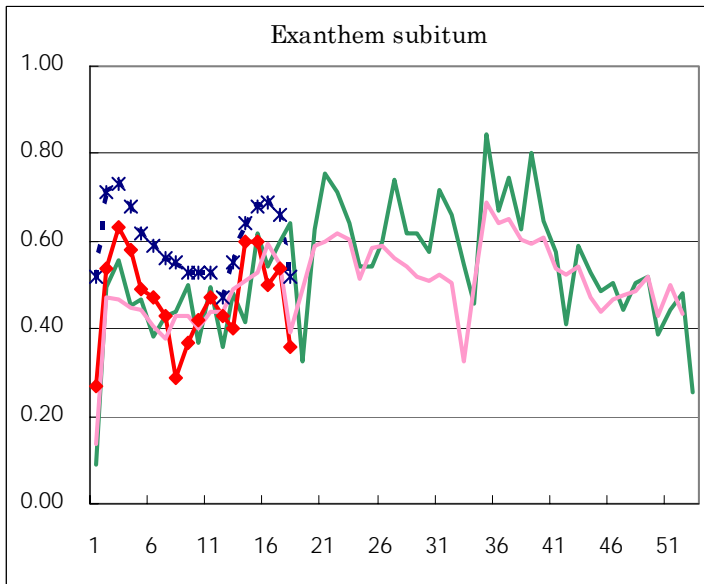
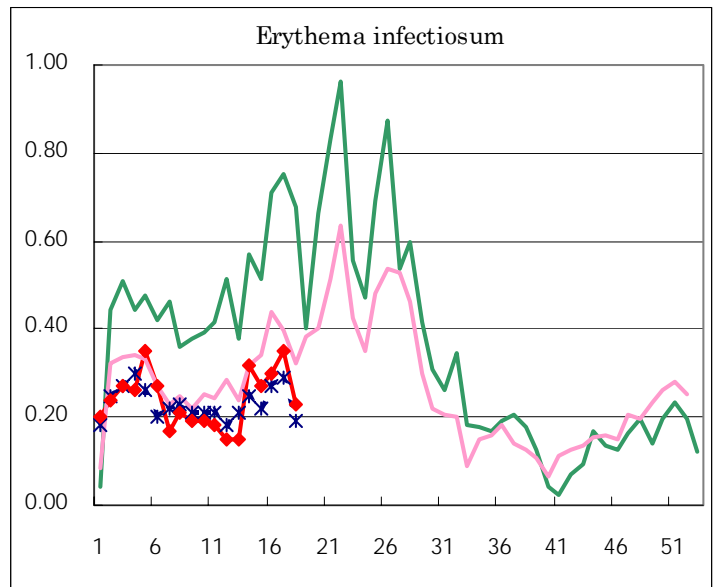
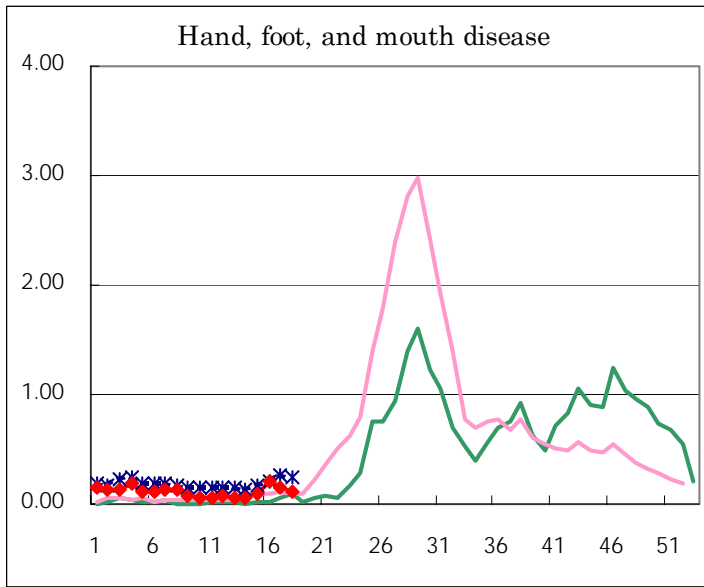
Number of patients with the diseases to be reported
by the designated clinics and hospitals

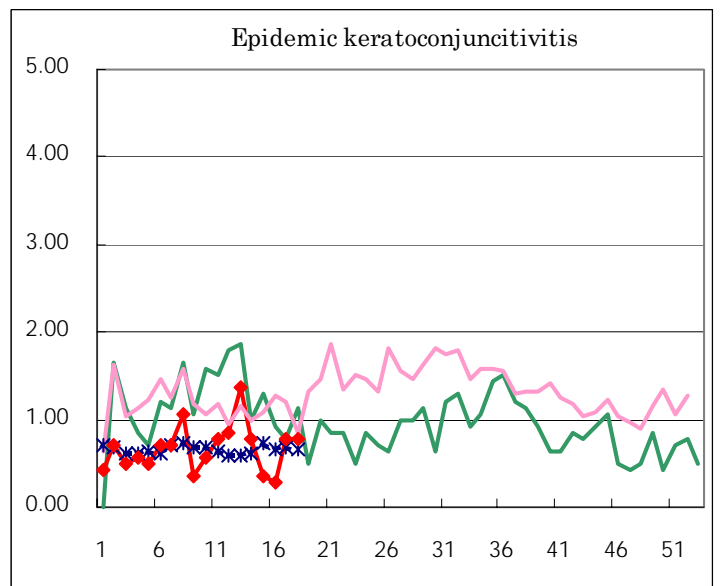
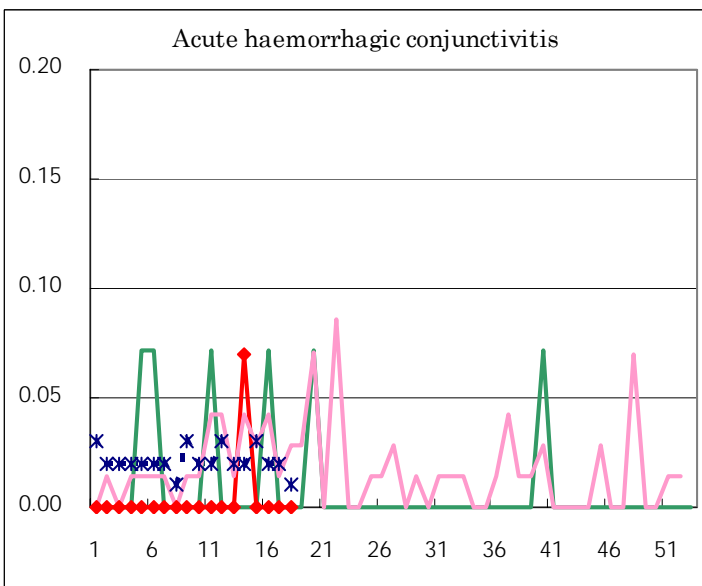
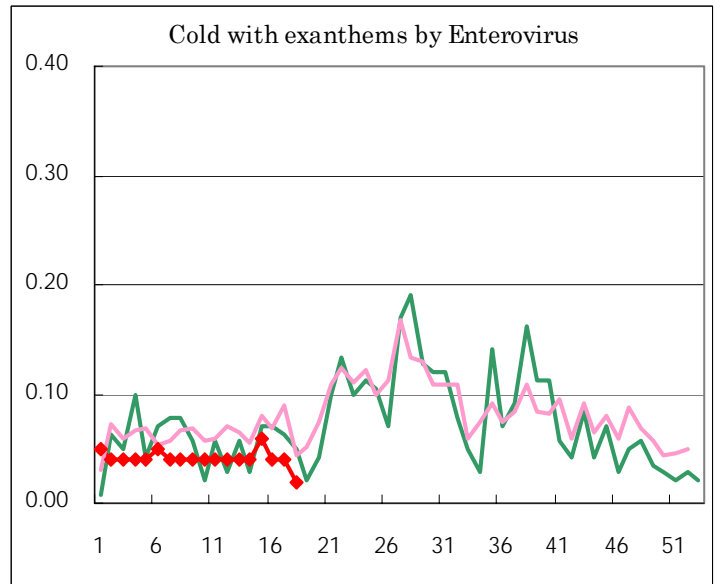
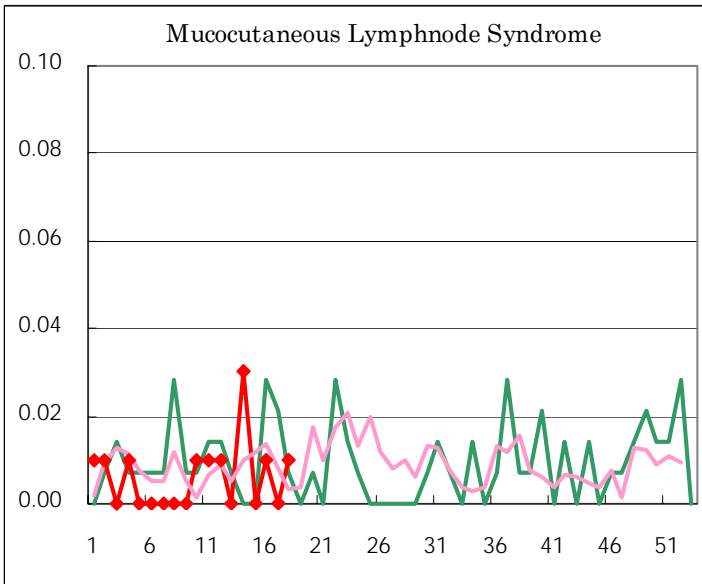
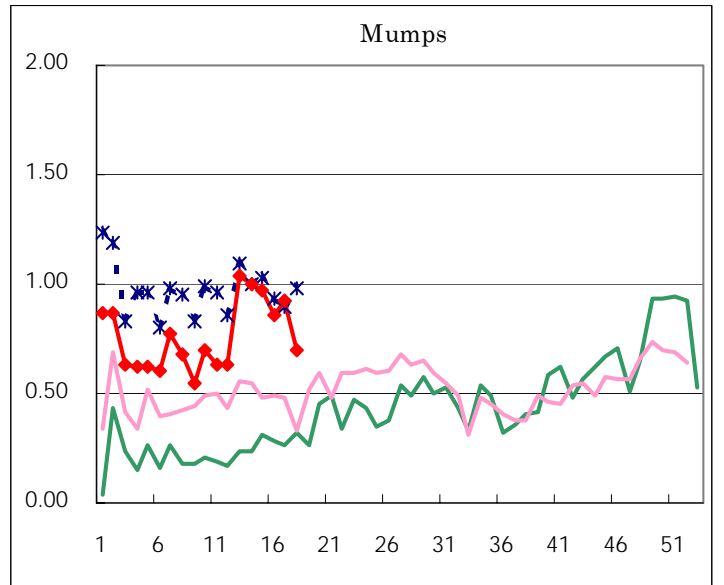
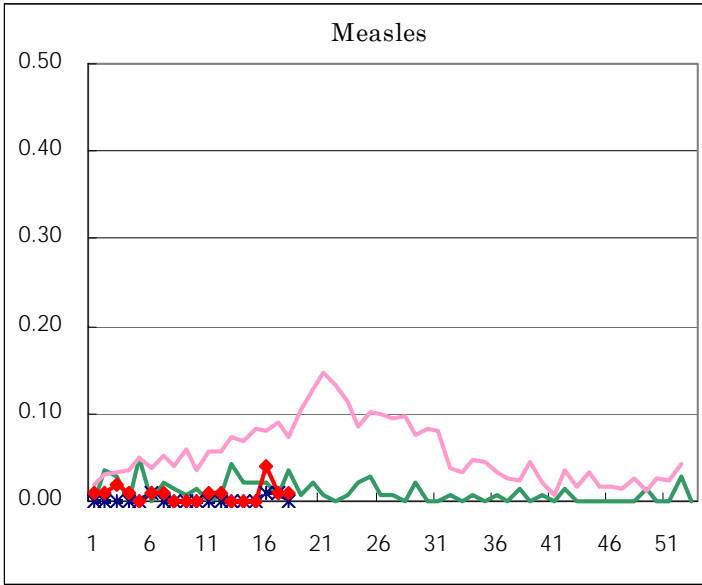
| Diseases | Sex | 2005 | | | | Total |
|---|-----|------|------|------|------------|-------|
| | | 15th | 16th | 17th | 18th | |
| Respiratory syncytial virus infection | M | 3 | 4 | 5 | 3 | 15 |
| | F | 3 | 3 | 2 | 4 | 12 |
| Influenza | M | 148 | 99 | 57 | 24 | 328 |
| | F | 131 | 88 | 60 | 17 | 296 |
| Pharygoconjunctival fever | M | 18 | 17 | 15 | 22 | 72 |
| | F | 7 | 11 | 15 | 13 | 46 |
| Group A streptococcal pharyngitis | M | 53 | 81 | 77 | 60 | 271 |
| | F | 59 | 63 | 66 | 49 | 237 |
| Infectious gastroenteritis | M | 405 | 426 | 359 | 256 | 1,446 |
| | F | 357 | 462 | 341 | 215 | 1,375 |
| Chickenpox | M | 76 | 78 | 89 | 95 | 338 |
| | F | 60 | 48 | 77 | 69 | 254 |
| Hand, foot, and mouth disease | M | 4 | 13 | 10 | 14 | 41 |
| | F | 9 | 15 | 13 | 3 | 40 |
| Erythema infectiosum | M | 20 | 16 | 27 | 20 | 83 |
| | F | 18 | 26 | 22 | 13 | 79 |
| Exanthem subitum | M | 49 | 30 | 39 | 34 | 152 |
| | F | 36 | 41 | 38 | 17 | 132 |
| Pertussis | M | | | | | |
| | F | | | | | |
| Rubella | M | | | | 1 | 1 |
| | F | | | | 2 | 2 |
| Herpangina | M | 3 | 7 | 6 | 8 | 24 |
| | F | 5 | 3 | 10 | 3 | 21 |
| Measles | M | | 2 | | | 2 |
| | F | | 3 | 1 | 1 | 5 |
| Mumps | M | 71 | 65 | 71 | 53 | 260 |
| | F | 67 | 57 | 60 | 47 | 231 |
| Cold with exanthems by Enterovirus | M | 6 | 3 | 4 | 2 | 15 |
| | F | 3 | 2 | 1 | 1 | 7 |
| Mucocutaneous Lymphnode Syndrome | M | | 1 | | 1 | 2 |
| | F | | | | | |
| Acute hemorrhagic conjunctivitis | M | | | | | |
| | F | | | | | |
| Epidemic keratoconjunctivitis | M | 4 | 3 | 4 | 6 | 17 |
| | F | | 1 | 7 | 5 | 13 |
| Bacterial meningitis | M | | | | | |
| | F | | 1 | | | 1 |
| Aseptic meningitis | M | | | 1 | | 1 |
| | F | 1 | | | | 1 |
| Mycoplasma pneumonia | M | 1 | | 2 | 2 | 5 |
| | F | 3 | 1 | 4 | 1 | 9 |
| Chlamydial pneumonia (excluding psittacosis) | M | | | | | |
| | F | | | | | |
| Measles in adults | M | | | | | |
| | F | | | | | |

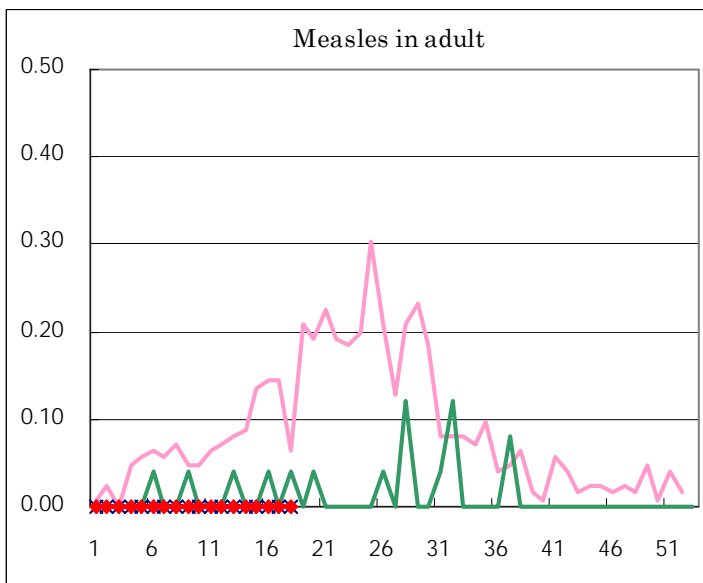
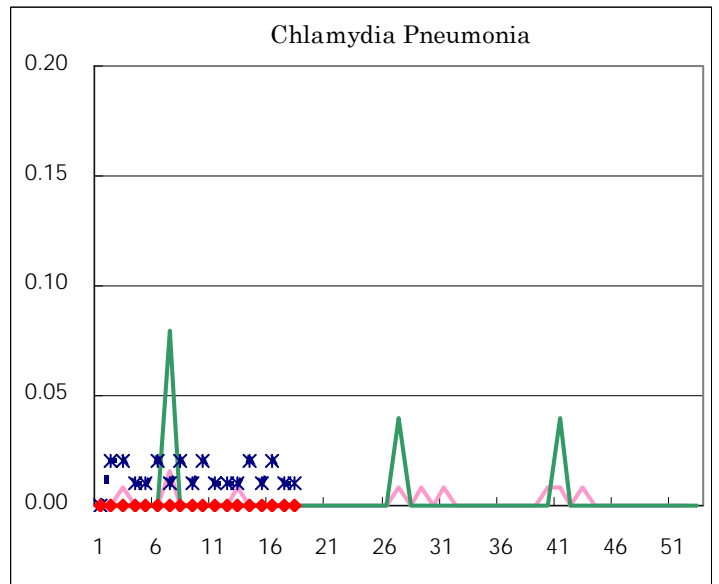
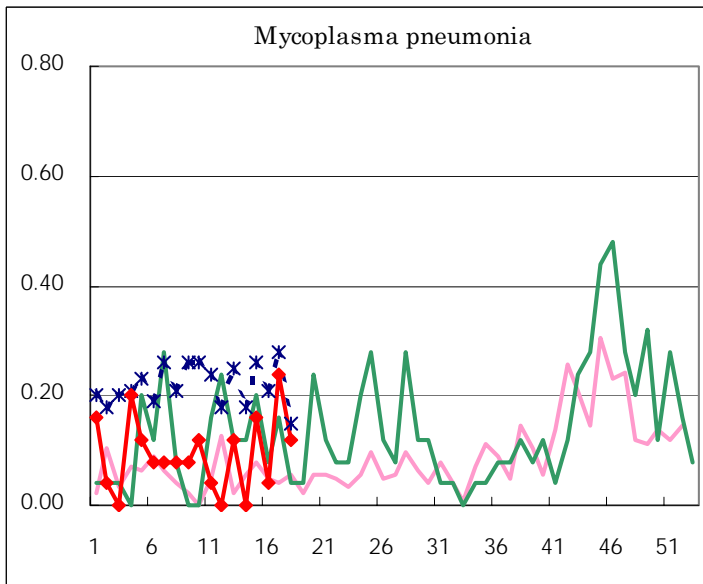
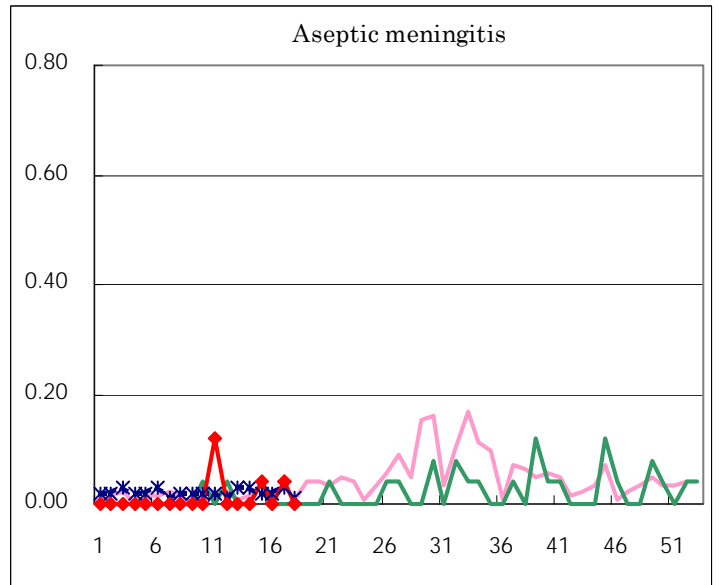
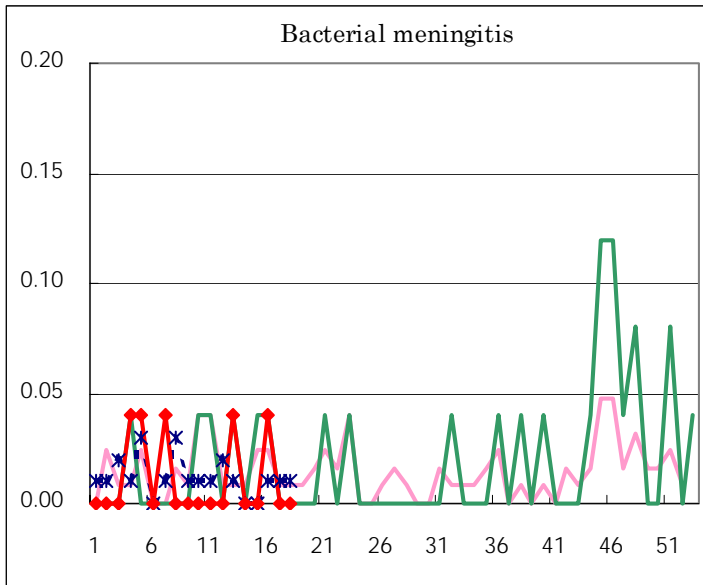
(Blank means 0.)

Disease Trend Graph (weekly reported cases per fixed-point in comparison)









Tokyo Metropolitan Government
Infectious Disease Surveillance Center