

INFECTIOUS DISEASES WEEKLY REPORT

# TOKYO IDWR

Tokyo Metropolitan Institute of Public Health

19 July 2005 / Number 27

- Number of patients with the diseases required notifying all the cases
- Number of patients with the diseases to be reported by the designated clinics and hospitals
- Disease trend graph (weekly reported cases per fixed-point in comparison)

## Surveillance System in Tokyo, Japan

### The diseases which all physicians must report

All physicians must report to health centers the incidence of the diseases which are shown at page one. Health centers electronically report the individual case to Tokyo Metropolitan Infectious Disease Surveillance Center.

### Fixed-point surveillance

The numbers of patients who visit designated clinics or hospitals during a week are reported to health centers ( There are 37 in Tokyo). And they electronically report the numbers to Tokyo Metropolitan Infectious Disease Surveillance Center. We have about 200 fixed points (clinics and hospitals) in Tokyo.

1<sup>st</sup> Week is early January and 52<sup>nd</sup> Week is end of December.

Tokyo Metropolitan Infectious Disease Surveillance Center  
Tokyo Metropolitan Institute of Public Health

TEL:81-3-3363-3213 FAX:81-3-5332-7365  
e-mail:[idsc@tokyo-eiken.go.jp](mailto:idsc@tokyo-eiken.go.jp)  
URL:[idsc.tokyo-eiken.go.jp/](http://idsc.tokyo-eiken.go.jp/)

## Number of patients with the diseases which all physicians must report

Category	Diseases	Tokyo				Japan		
		24th	25th	26th	27th	Total	27th	Total
I	Ebola hemorrhagic fever							
	Crimean-Congo hemorrhagic fever							
	Severe acute respiratory syndrome							
	Smallpox							
	Plague							
	Marburg disease							
	Lassa fever							
II	Acute poliomyelitis							
	Cholera					3	1	26
	Shigellosis		1	2		42	7	282
	Diphtheria							
	Typhoid fever					4		23
	Paratyphoid fever					3		6
III	Enterohemorrhagic <i>Escherichia coli</i> infection	3	6	11	7	52	135	1021
IV	Hepatitis E					4	(1)	(28)
	West Nile fever							
	Hepatitis A	1			1	13	(2)	(109)
	Echinococcosis						1	11
	Yellow fever							
	Psittacosis					2		25
	Relapsing fever							
	Q fever					2		6
	Rabies							
	High pathogenic avian influenza							
	Coccidioidomycosis						1	1
	Monkeypox							
	Hemorrhagic fever with renal syndrome							
	Anthrax							
	Scrub typhus (Tsutsugamushi disease)					3	2	91
	Dengue fever					4		16
	Nipah virus infection							
	Japanese spotted fever						1	17
	Japanese encephalitis							
	Hantavirus pulmonary syndrome							
	B virus disease							
	Brucellosis							
	Epidemic typhus							
Botulism					1			
Malaria		1	1		9		32	
Tularemia								
Lyme disease						1	1	
Lyssavirus infection								
Legionellosis	1				2	9	5	85
Leptospirosis						1	(1)	(3)
V	Amebiasis	4	5	9	6	99	10	359
	Acute viral hepatitis(excluding Hepatitis A,Hepatitis E)	1	1		1	27	4	156
	Acute encephalitis			2		12		(118)
	Cryptosporidiosis					1		5
	Creutzfeldt-Jakob Disease	1		1		10	1	69
	Sever invasive streptococcal infections					2		31
	Acquired immunodeficiency syndrome	36	6	19	8	227	9	587
	Giardiasis	1	1		1	8	2	37
	Meningococcal meningitis					2		7
	Congenital rubella syndrome							
	Syphilis	1		2	2	40	6	260
	Tetanus					1		46
	Vancomycin-resistant <i>Staphylococcus aureus</i> infection							
	Vancomycin-resistant <i>enterococcus</i> infection				1	8		37

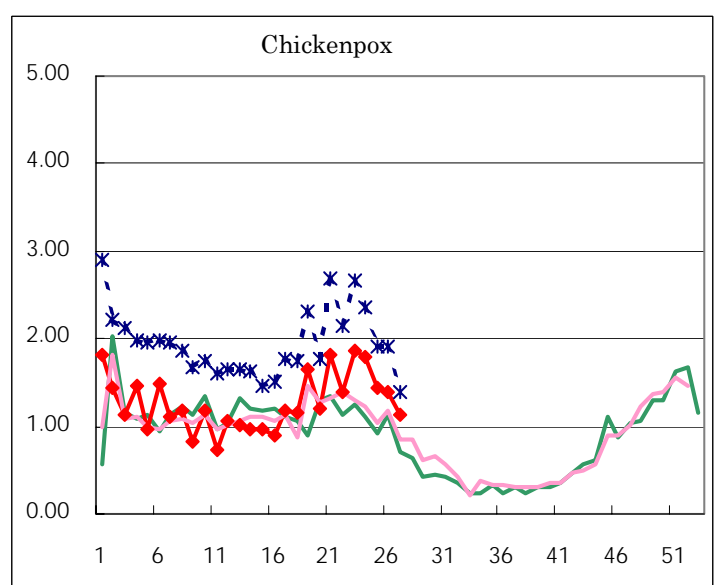
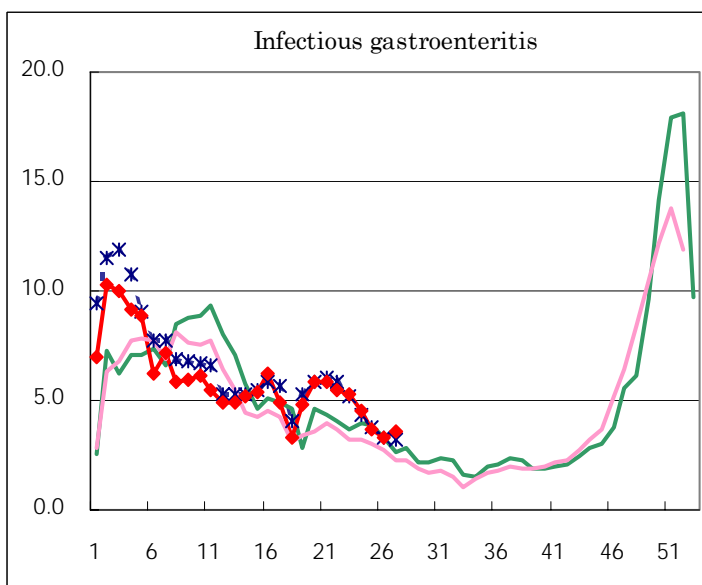
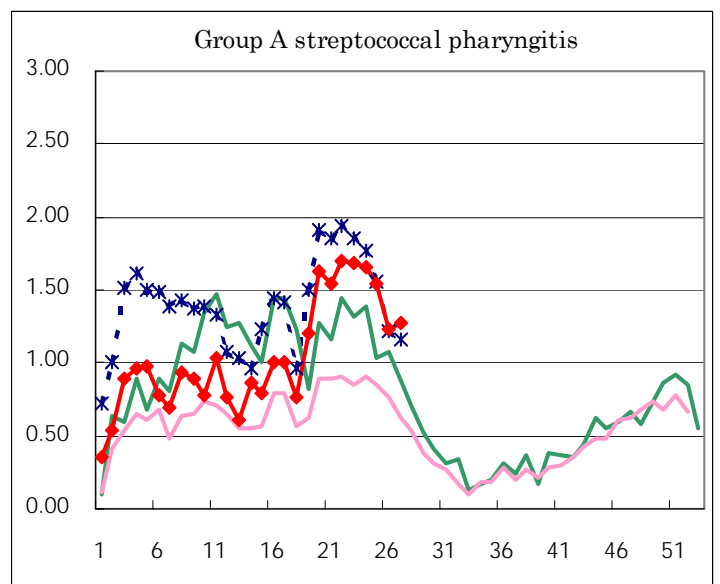
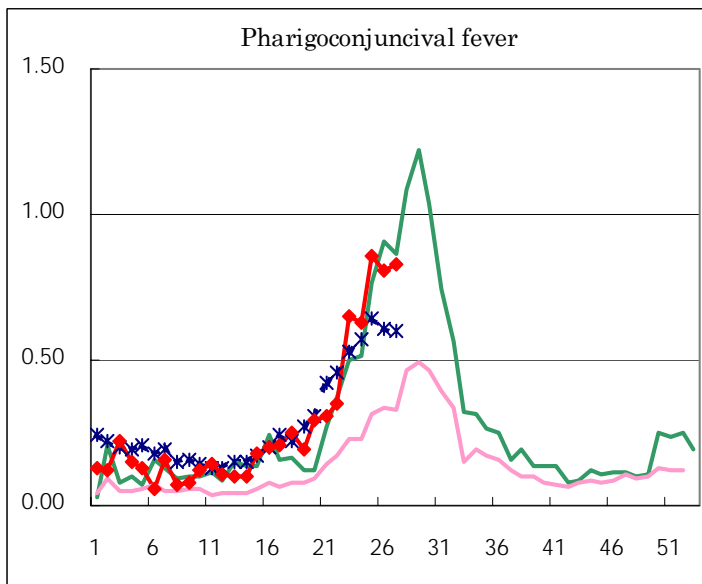
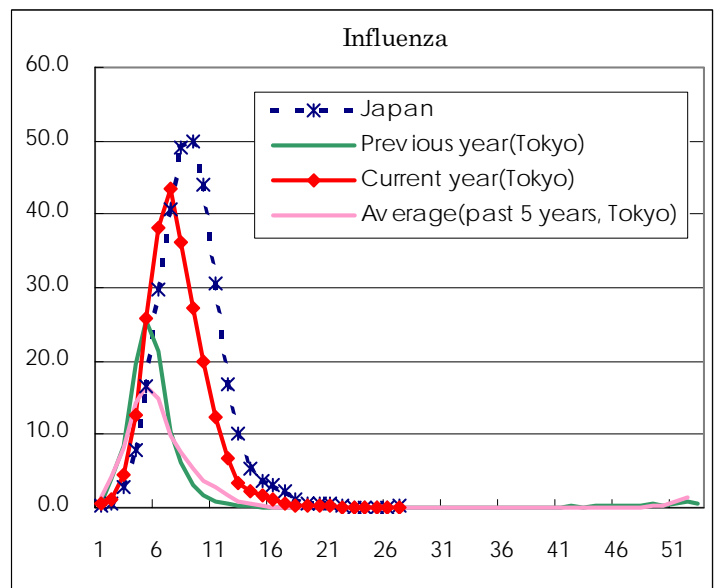
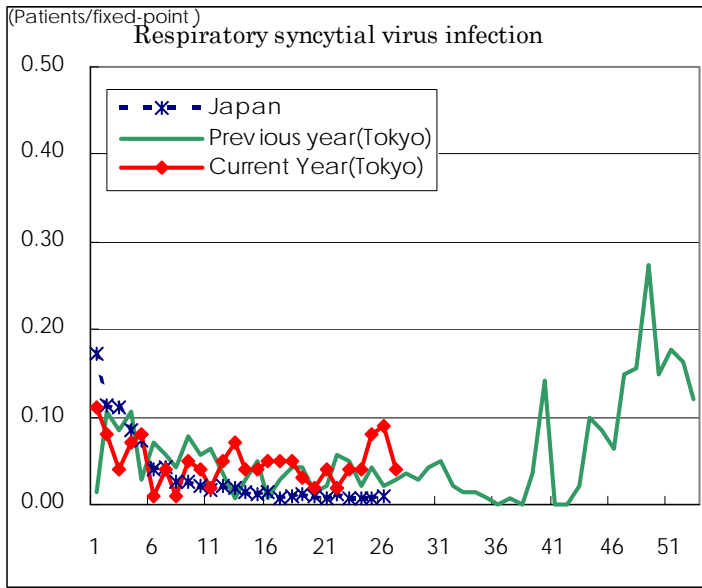
( Blank means 0. )

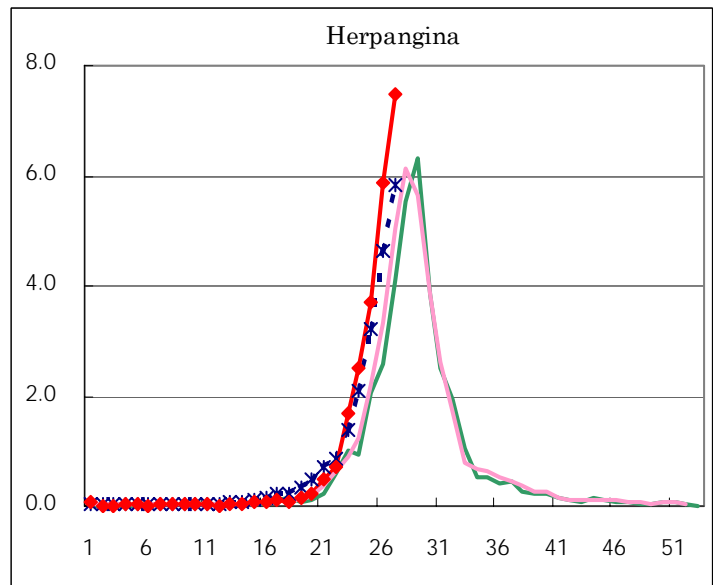
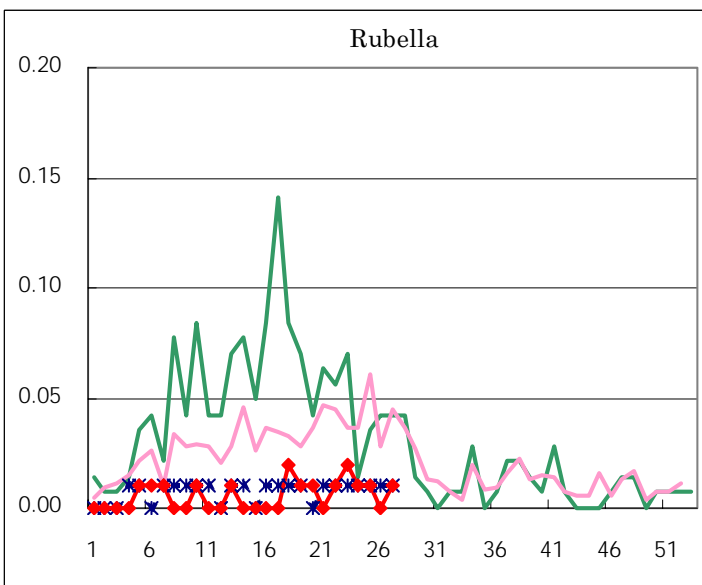
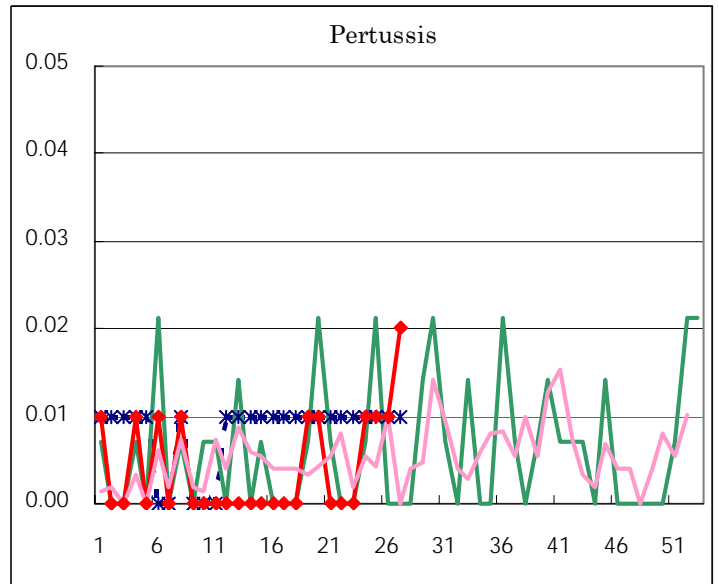
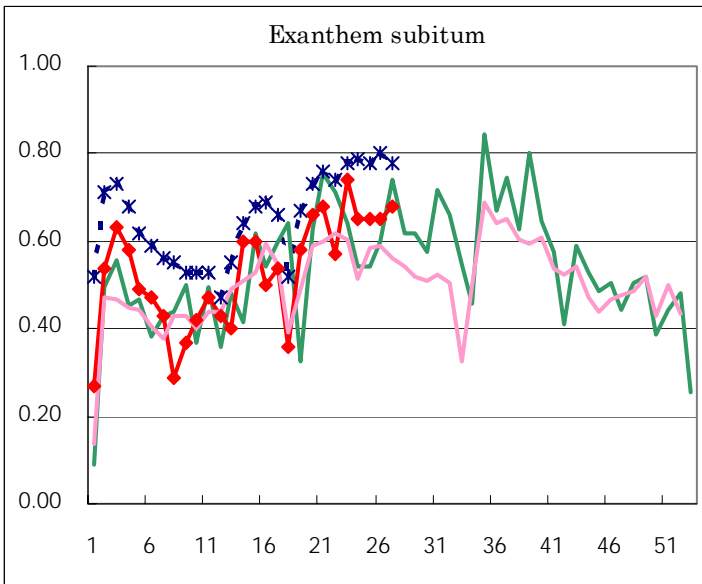
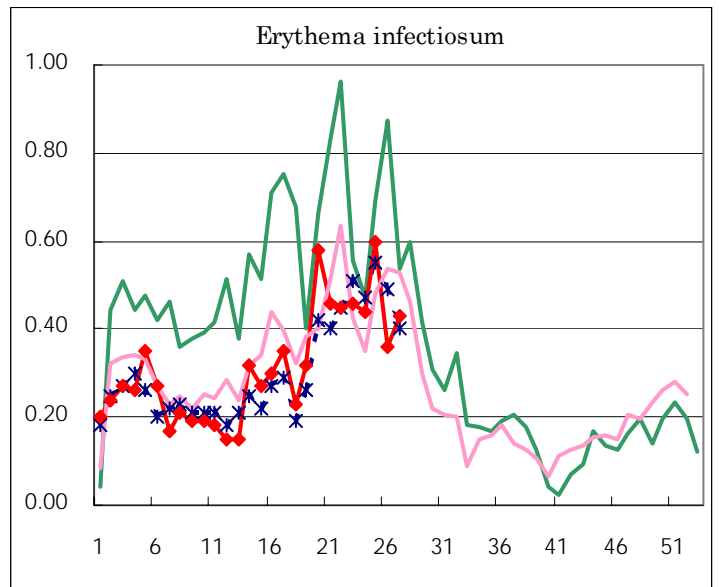
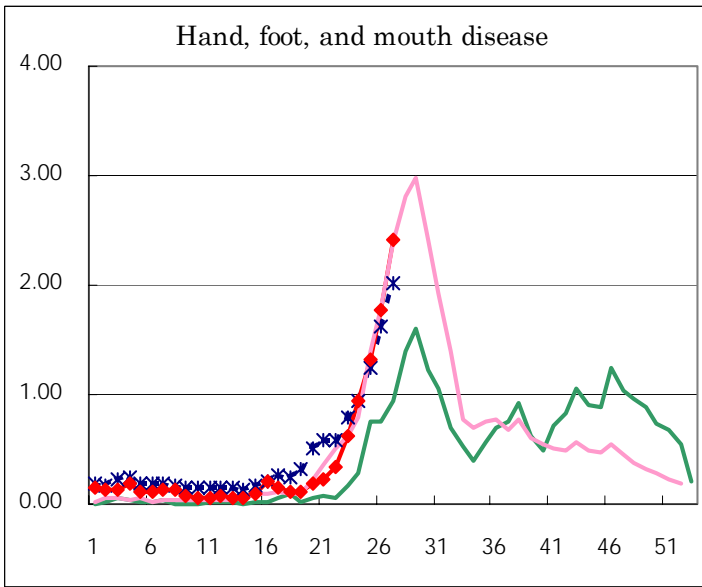
Number of patients with the diseases to be reported  
by the designated clinics and hospitals

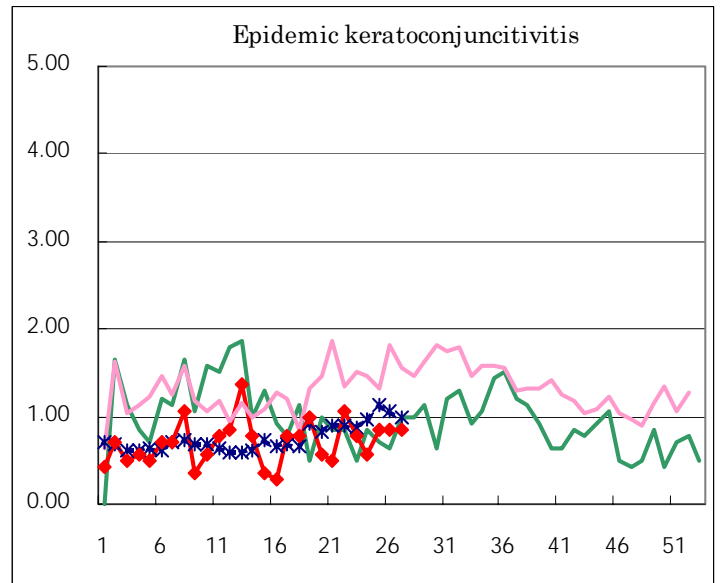
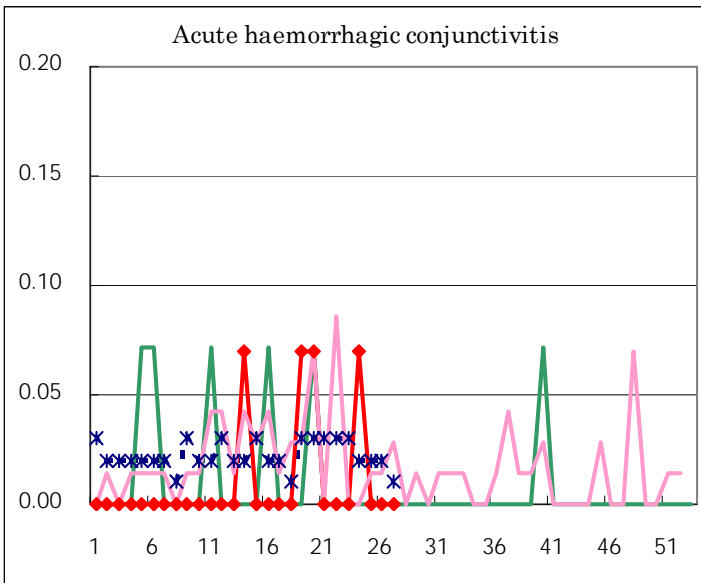
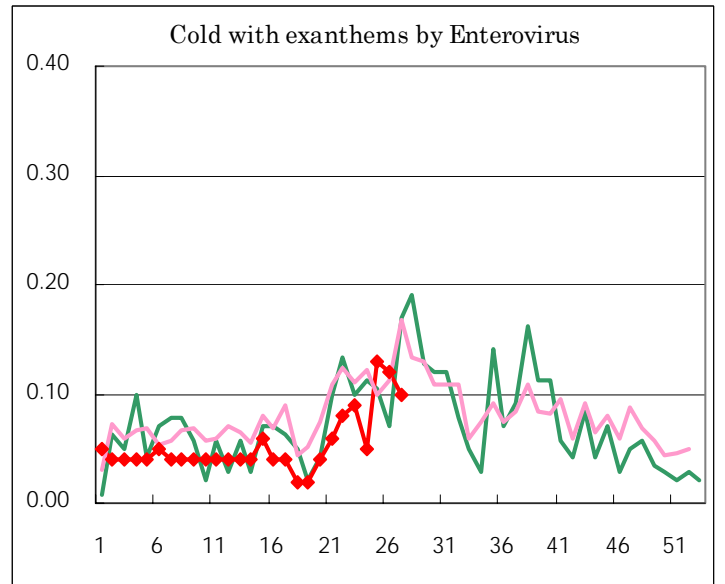
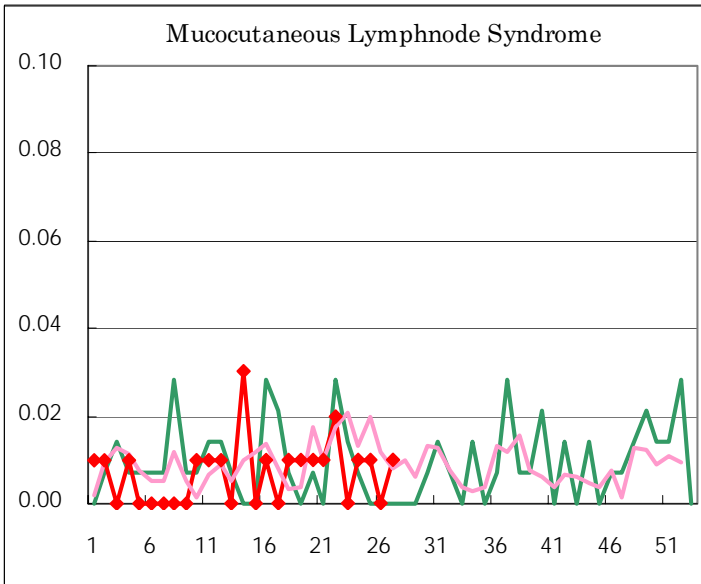
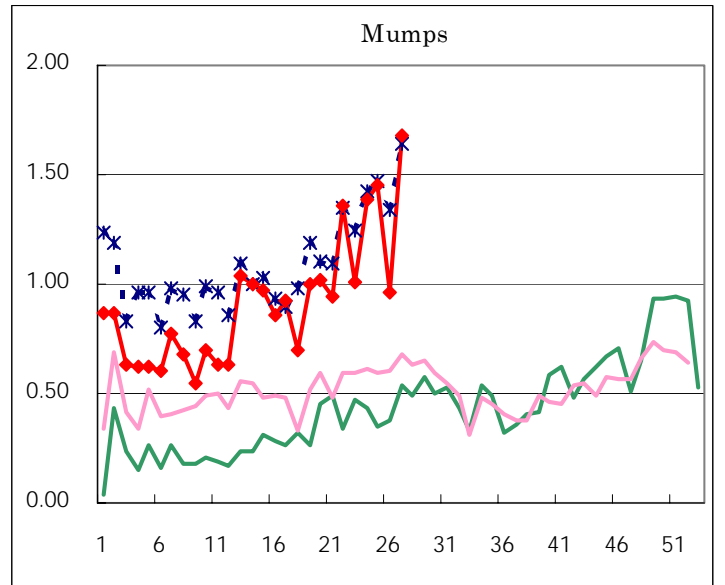
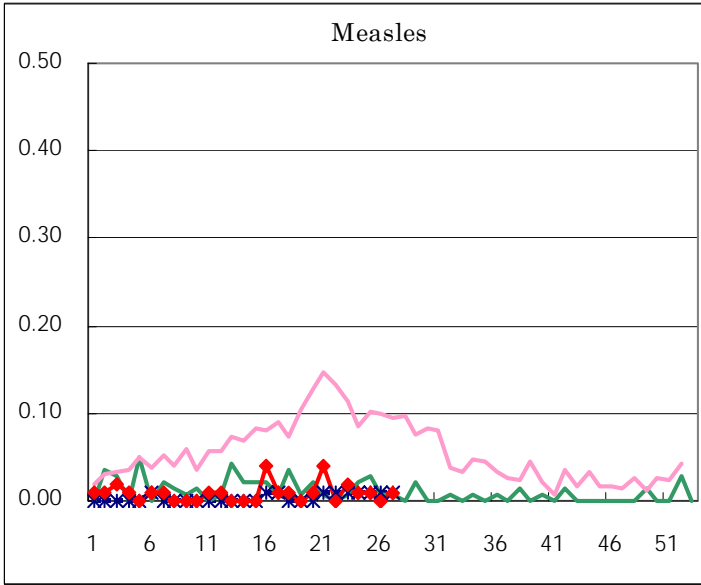
Diseases	Sex	2005				Total
		24th	25th	26th	27th	
Respiratory syncytial virus infection	M	3	5	6	<b>3</b>	17
	F	2	6	7	<b>2</b>	17
Influenza	M	1	2		<b>2</b>	5
	F	5			<b>1</b>	6
Pharyngoconjunctival fever	M	52	58	65	<b>65</b>	240
	F	38	64	50	<b>53</b>	205
Group A streptococcal pharyngitis	M	128	122	100	<b>97</b>	447
	F	108	96	74	<b>84</b>	362
Infectious gastroenteritis	M	324	282	249	<b>281</b>	1,136
	F	318	238	221	<b>234</b>	1,011
Chickenpox	M	144	111	111	<b>92</b>	458
	F	112	95	85	<b>68</b>	360
Hand, foot, and mouth disease	M	89	103	151	<b>202</b>	545
	F	44	85	100	<b>140</b>	369
Erythema infectiosum	M	24	38	25	<b>28</b>	115
	F	38	47	26	<b>33</b>	144
Exanthem subitum	M	55	49	46	<b>46</b>	196
	F	38	44	46	<b>51</b>	179
Pertussis	M	1	1	1	<b>2</b>	5
	F				<b>1</b>	1
Rubella	M				<b>2</b>	2
	F	2	1			3
Herpangina	M	171	267	422	<b>558</b>	1,418
	F	182	258	412	<b>505</b>	1,357
Measles	M		1		<b>1</b>	2
	F	1			<b>1</b>	2
Mumps	M	111	117	73	<b>140</b>	441
	F	87	89	64	<b>98</b>	338
Cold with exanthems by Enterovirus	M	5	11	9	<b>7</b>	32
	F	2	8	8	<b>7</b>	25
Mucocutaneous Lymphnode Syndrome	M	1			<b>1</b>	2
	F	1	1			2
Acute hemorrhagic conjunctivitis	M	1				1
	F					
Epidemic keratoconjunctivitis	M	4	10	9	<b>5</b>	28
	F	4	2	3	<b>7</b>	16
Bacterial meningitis	M					
	F					
Aseptic meningitis	M				<b>2</b>	2
	F			3		3
Mycoplasma pneumonia	M	2	1			3
	F					
Chlamydial pneumonia (excluding psittacosis)	M					
	F					
Measles in adults	M					
	F					

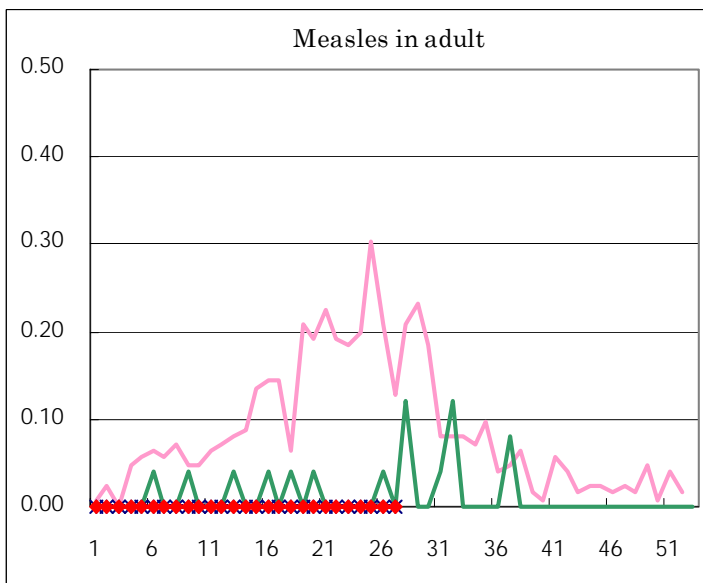
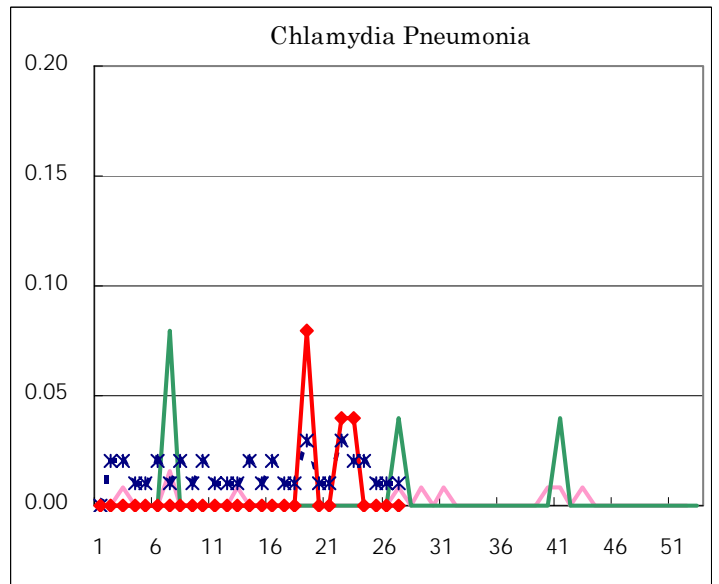
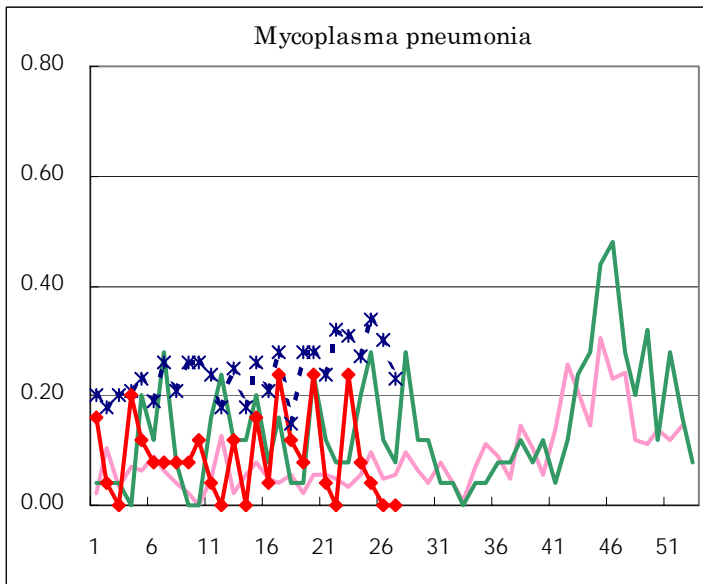
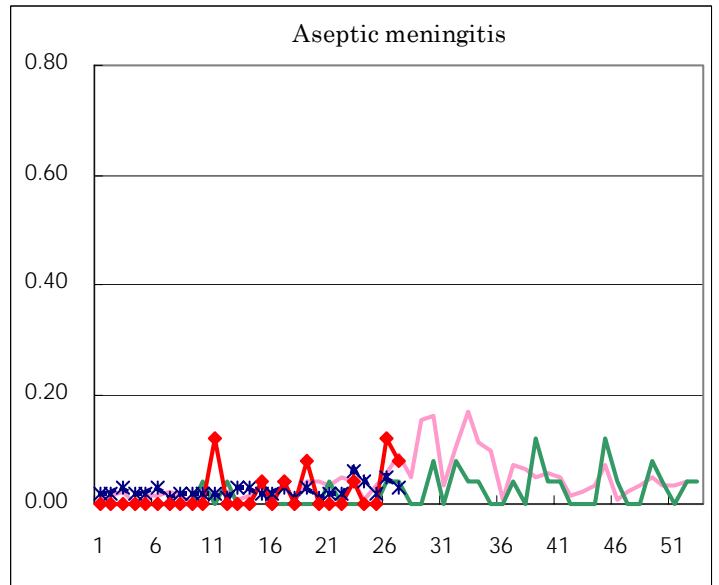
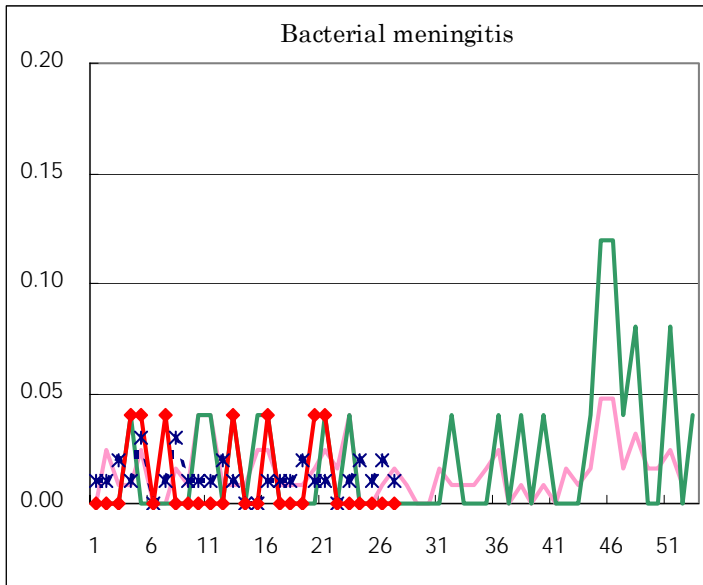
( Blank means 0. )

# Disease Trend Graph (weekly reported cases per fixed-point in comparison)









Tokyo Metropolitan Government  
**Infectious Disease Surveillance Center**