

INFECTIOUS DISEASES WEEKLY REPORT

TOKYO IDWR

Tokyo Metropolitan Institute of Public Health

9 August 2005 / Number 30

- Number of patients with the diseases required notifying all the cases
- Number of patients with the diseases to be reported by the designated clinics and hospitals
- Disease trend graph (weekly reported cases per fixed-point in comparison)

Surveillance System in Tokyo, Japan

The diseases which all physicians must report

All physicians must report to health centers the incidence of the diseases which are shown at page one. Health centers electronically report the individual case to Tokyo Metropolitan Infectious Disease Surveillance Center.

Fixed-point surveillance

The numbers of patients who visit designated clinics or hospitals during a week are reported to health centers (There are 37 in Tokyo). And they electronically report the numbers to Tokyo Metropolitan Infectious Disease Surveillance Center. We have about 200 fixed points (clinics and hospitals) in Tokyo.

1st Week is early January and 52nd Week is end of December.

Tokyo Metropolitan Infectious Disease Surveillance Center
Tokyo Metropolitan Institute of Public Health

TEL:81-3-3363-3213 FAX:81-3-5332-7365
e-mail: idsc@tokyo-eiken.go.jp
URL: idsc.tokyo-eiken.go.jp/

Number of patients with the diseases which all physicians must report

Category	Diseases	Tokyo				Japan		
		27th	28th	29th	30th	Total	30th	Total
I	Ebola hemorrhagic fever							
	Crimean-Congo hemorrhagic fever							
	Severe acute respiratory syndrome							
	Smallpox							
	Plague							
	Marburg disease							
	Lassa fever							
II	Acute poliomyelitis							
	Cholera					3	2	30
	Shigellosis		4	2	4	52	14	325
	Diphtheria							
	Typhoid fever					4		28
	Paratyphoid fever					3	1	8
III	Enterohemorrhagic <i>Escherichia coli</i> infection	7	12	8	9	81	168	1525
IV	Hepatitis E		1			5	(1)	(31)
	West Nile fever							
	Hepatitis A	1				13	(2)	(125)
	Echinococcosis							11
	Yellow fever							
	Psittacosis					2		24
	Relapsing fever							
	Q fever		1			3		8
	Rabies							
	High pathogenic avian influenza							
	Coccidioidomycosis							1
	Monkeypox							
	Hemorrhagic fever with renal syndrome							
	Anthrax							
	Scrub typhus (Tsutsugamushi disease)					3	1	97
	Dengue fever					4		17
	Nipah virus infection							
	Japanese spotted fever						2	21
	Japanese encephalitis							
	Hantavirus pulmonary syndrome							
	B virus disease							
	Brucellosis							
	Epidemic typhus							
Botulism					1			
Malaria		1		1	11	2	40	
Tularemia								
Lyme disease				1	1		1	
Lyssavirus infection								
Legionellosis	2	1		1	11	9	115	
Leptospirosis					1		(3)	
V	Amebiasis	6		4	4	107	5	397
	Acute viral hepatitis(excluding Hepatitis A,Hepatitis E)	1				27	5	174
	Acute encephalitis			1		13	(1)	(124)
	Cryptosporidiosis					1		5
	Creutzfeldt-Jakob Disease				1	11	1	75
	Sever invasive streptococcal infections					2	1	35
	Acquired immunodeficiency syndrome	8	8	6	5	246	10	663
	Giardiasis	1				8	1	40
	Meningococcal meningitis			1		3		8
	Congenital rubella syndrome							
	Syphilis	2		1	3	44	6	299
	Tetanus					1	3	54
	Vancomycin-resistant <i>Staphylococcus aureus</i> infection							
	Vancomycin-resistant <i>enterococcus</i> infection	1				8	1	42

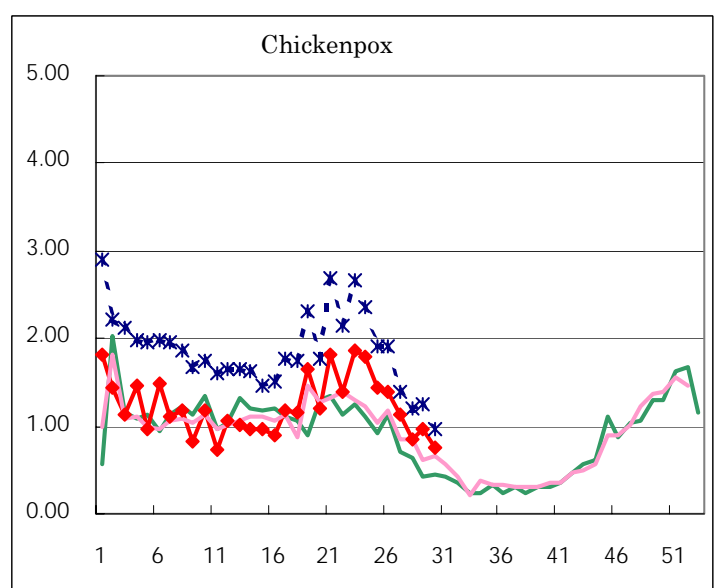
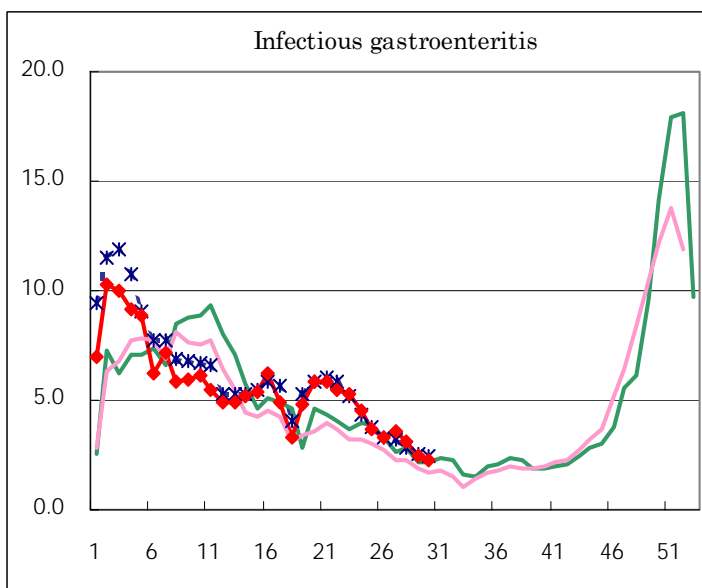
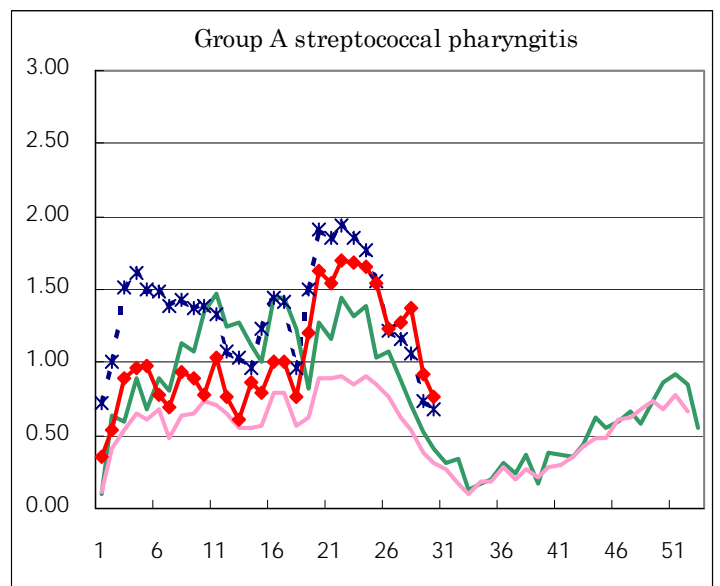
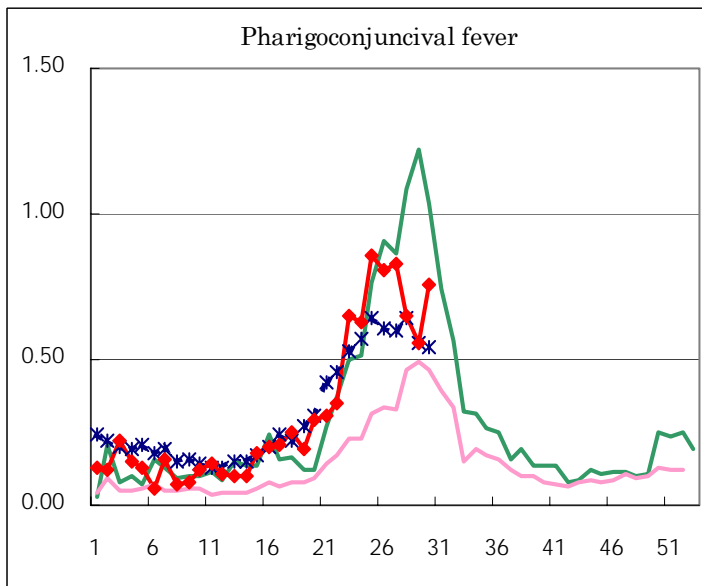
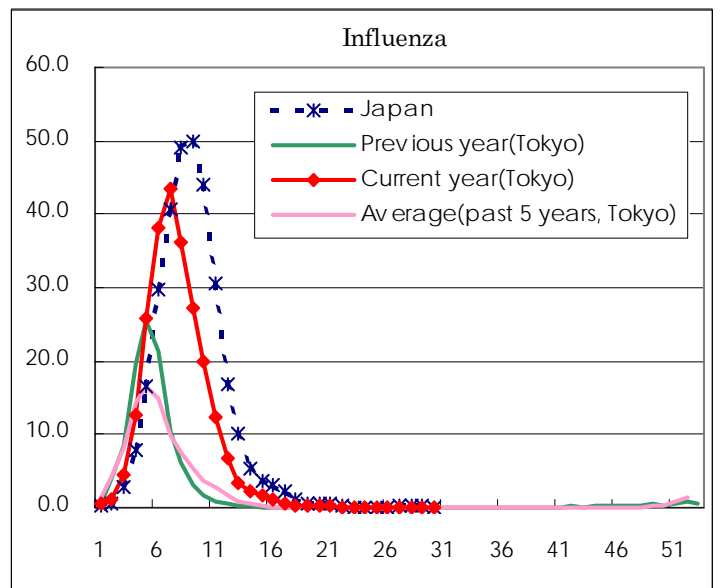
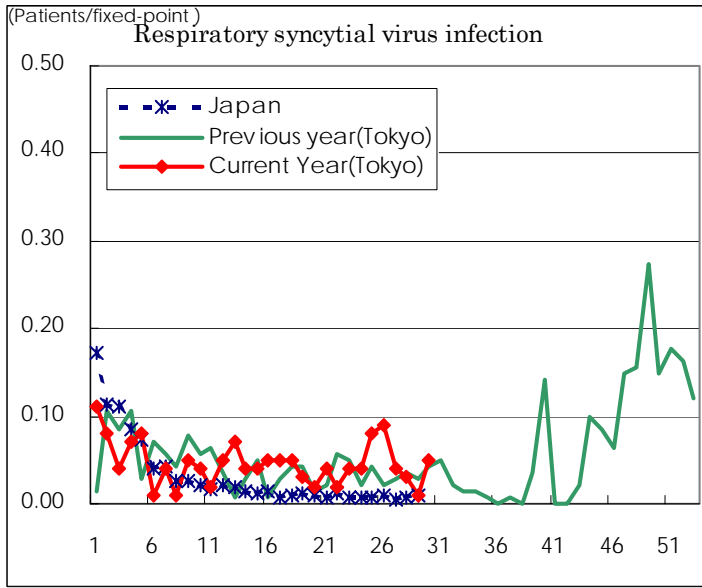
(Blank means 0.)

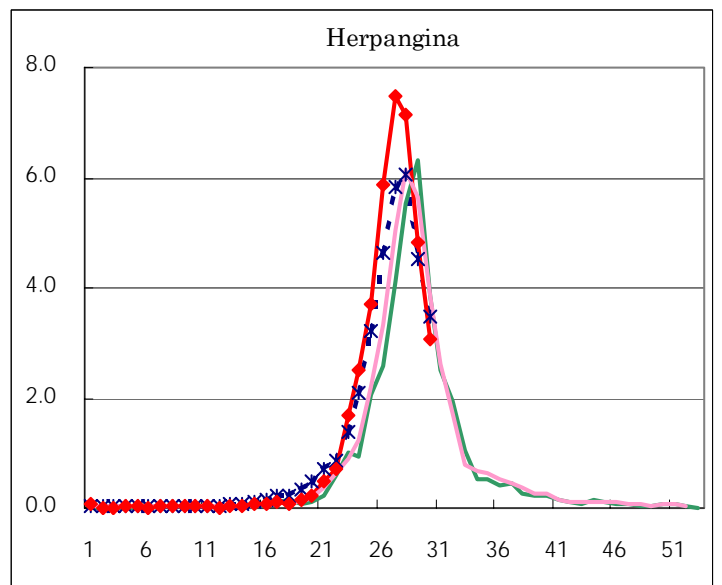
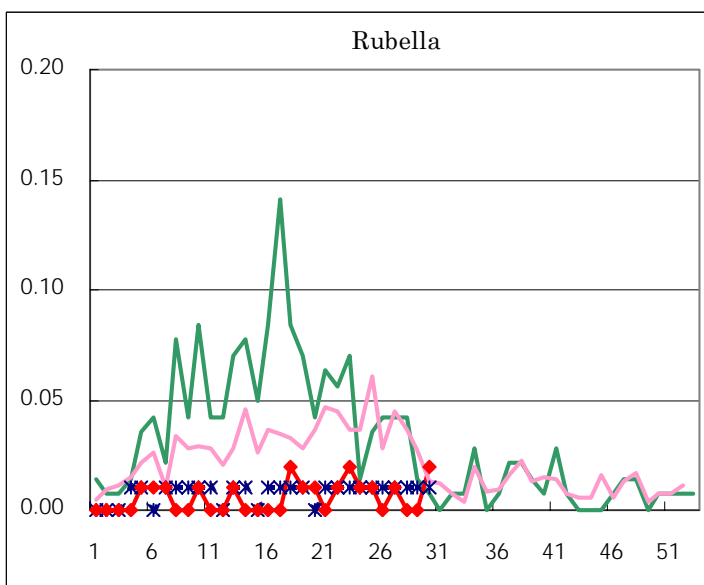
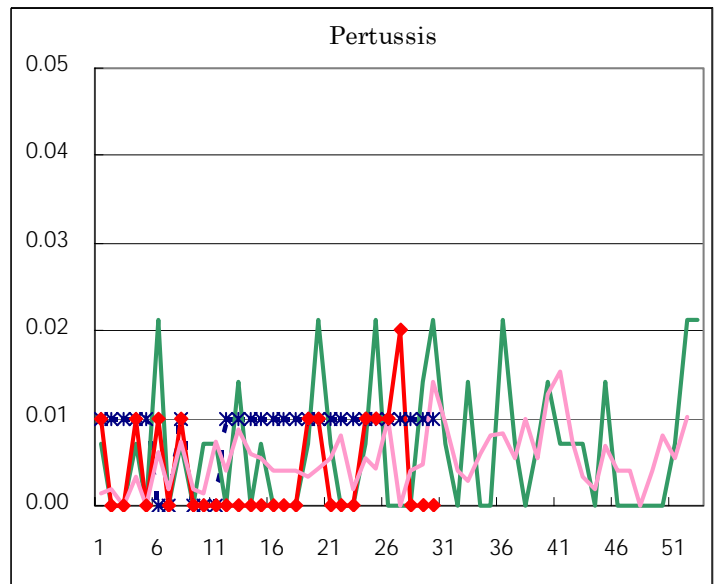
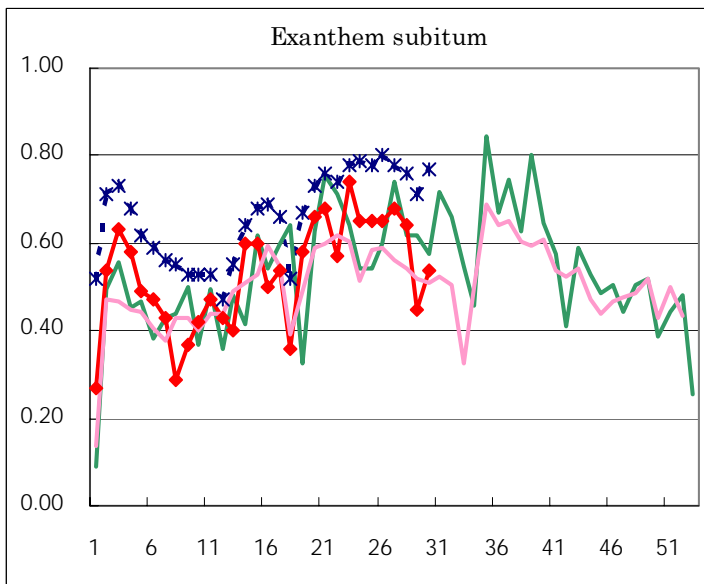
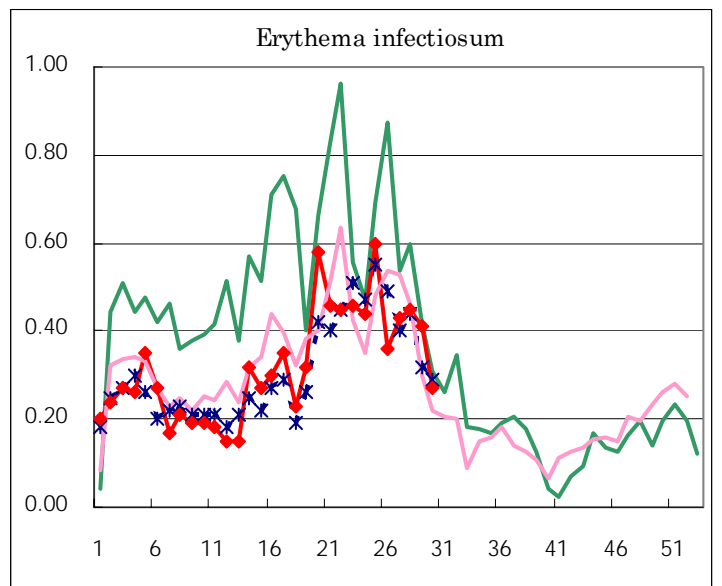
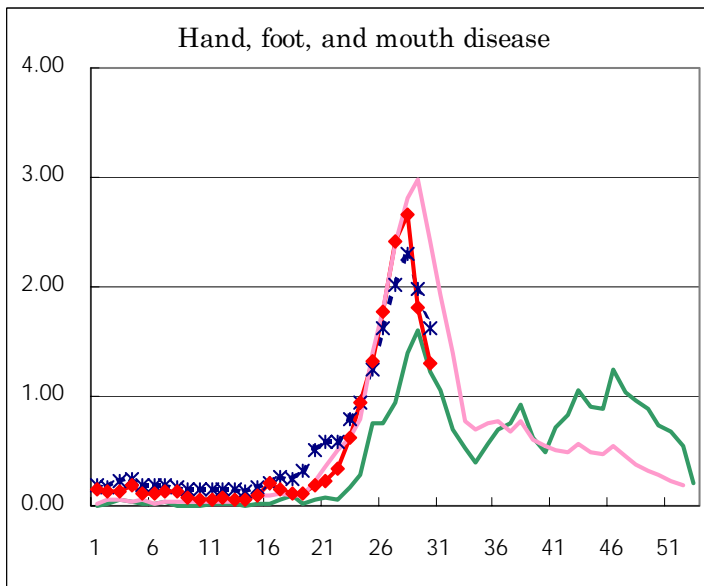
Number of patients with the diseases to be reported
by the designated clinics and hospitals

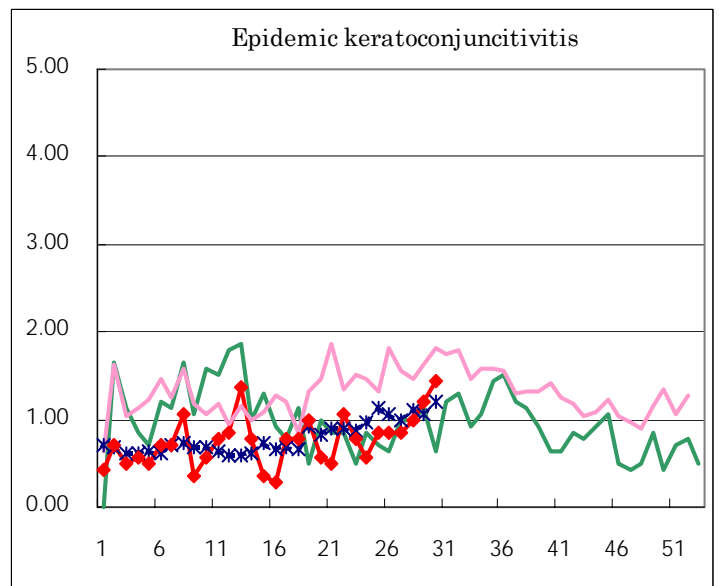
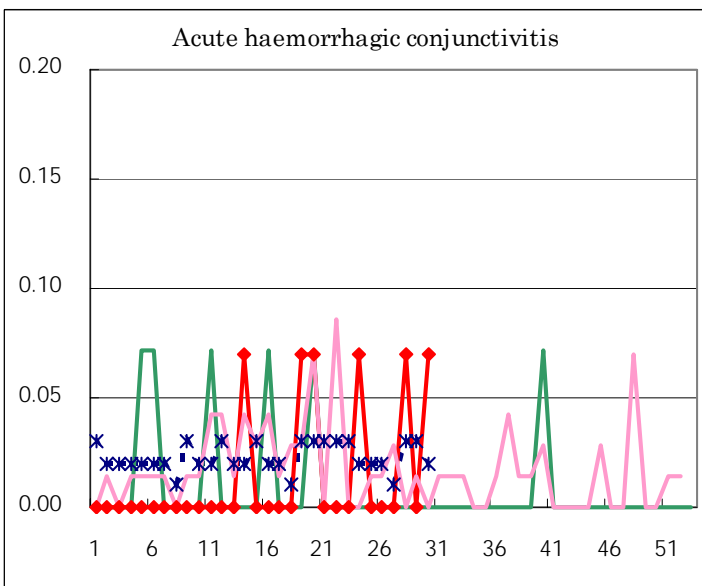
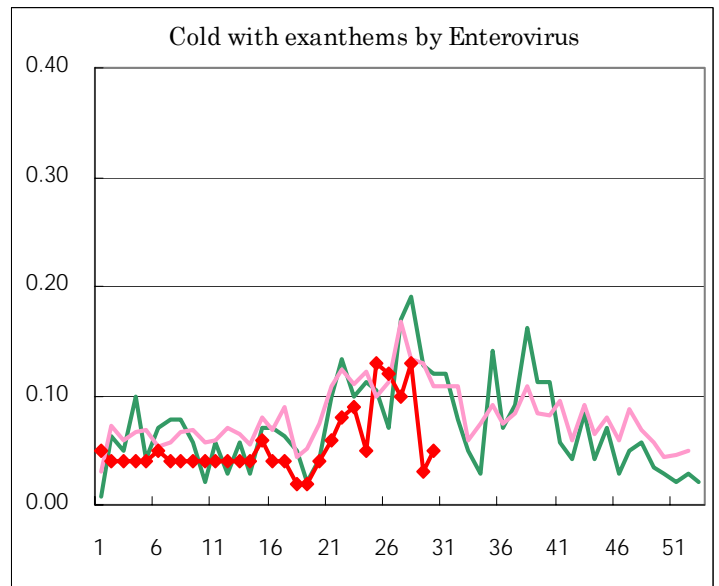
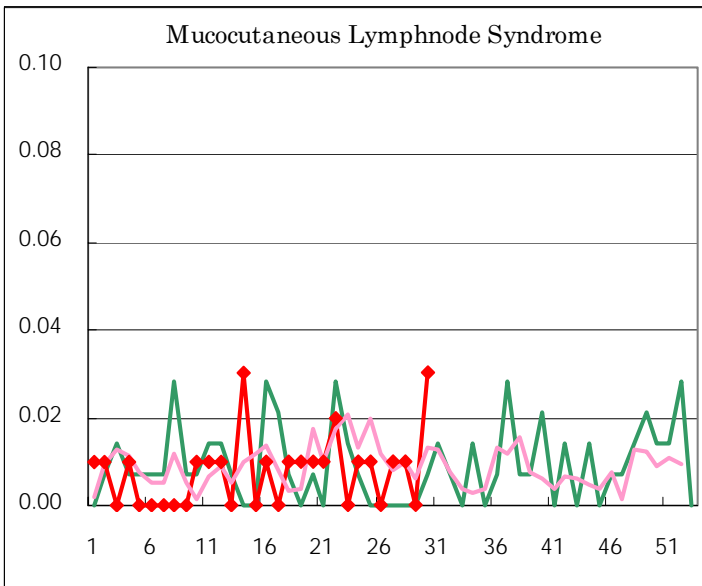
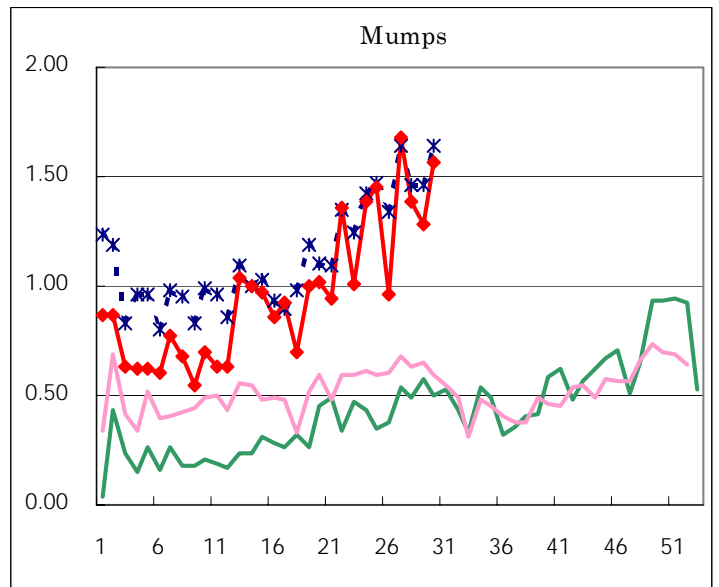
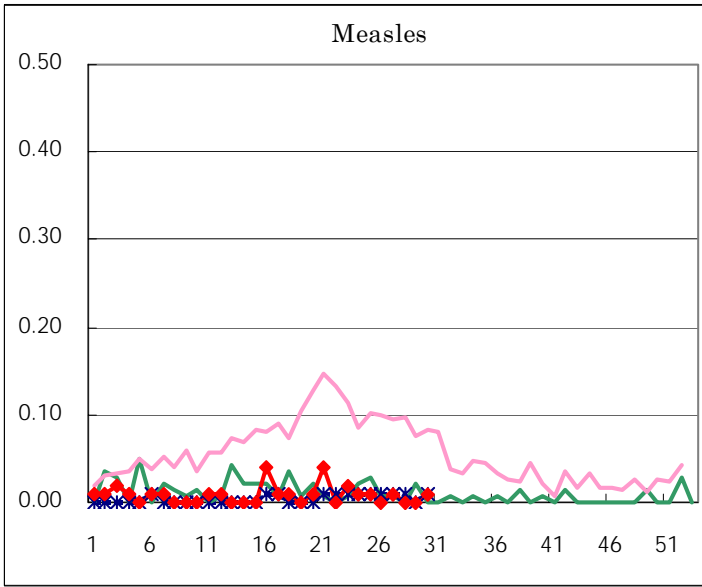
Diseases	Sex	2005				Total
		27th	28th	29th	30th	
Respiratory syncytial virus infection	M	3	2	1	5	11
	F	2	2	1	2	7
Influenza	M	2				2
	F	1		1	1	3
Pharyngoconjunctival fever	M	65	50	43	61	219
	F	53	43	37	47	180
Group A streptococcal pharyngitis	M	97	96	84	66	343
	F	84	99	46	44	273
Infectious gastroenteritis	M	281	261	188	168	898
	F	234	186	156	152	728
Chickenpox	M	92	55	68	58	273
	F	68	66	69	48	251
Hand, foot, and mouth disease	M	202	200	141	102	645
	F	140	178	118	82	518
Erythema infectiosum	M	28	25	28	16	97
	F	33	39	30	22	124
Exanthem subitum	M	46	41	28	40	155
	F	51	50	36	36	173
Pertussis	M	2				2
	F	1				1
Rubella	M	2				2
	F				3	3
Herpangina	M	558	543	350	228	1,679
	F	505	473	337	207	1,522
Measles	M	1				1
	F	1			2	3
Mumps	M	140	94	92	120	446
	F	98	103	90	103	394
Cold with exanthems by Enterovirus	M	7	15		5	27
	F	7	3	4	2	16
Mucocutaneous Lymphnode Syndrome	M	1			4	5
	F		1			1
Acute hemorrhagic conjunctivitis	M		1		1	2
	F					
Epidemic keratoconjunctivitis	M	5	4	9	14	32
	F	7	10	8	6	31
Bacterial meningitis	M					
	F					
Aseptic meningitis	M	2			1	3
	F			1		1
Mycoplasma pneumonia	M		2	2		4
	F		2	4		6
Chlamydial pneumonia (excluding psittacosis)	M					
	F					
Measles in adults	M					
	F					

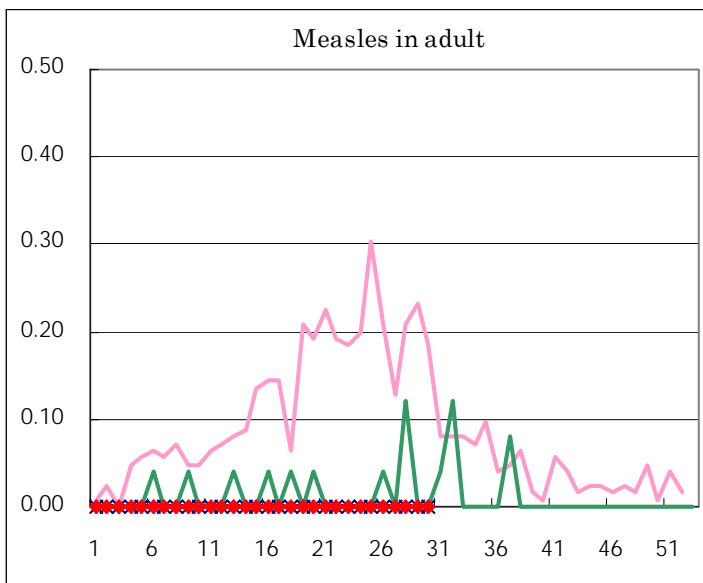
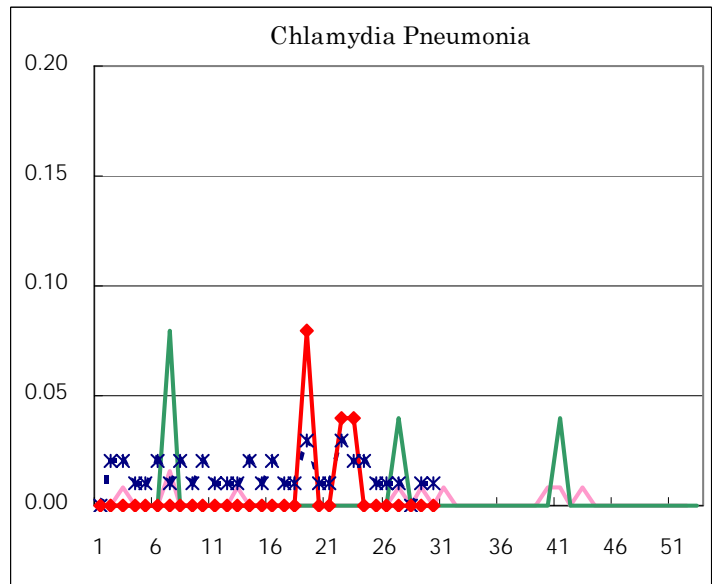
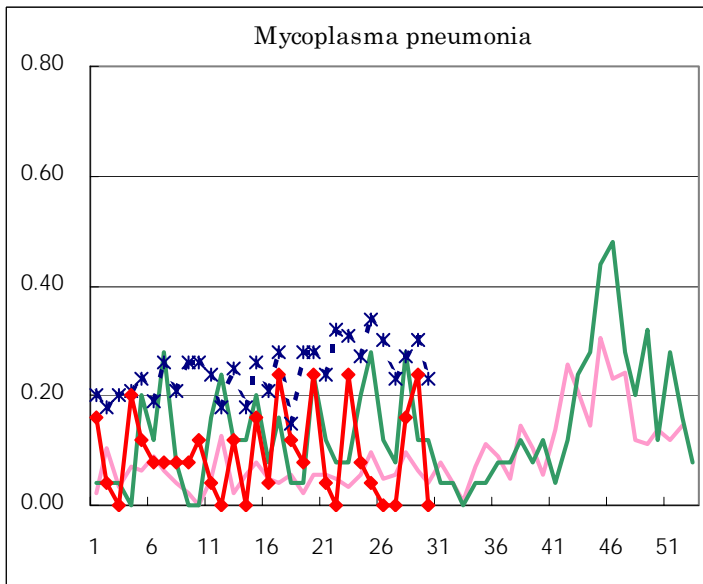
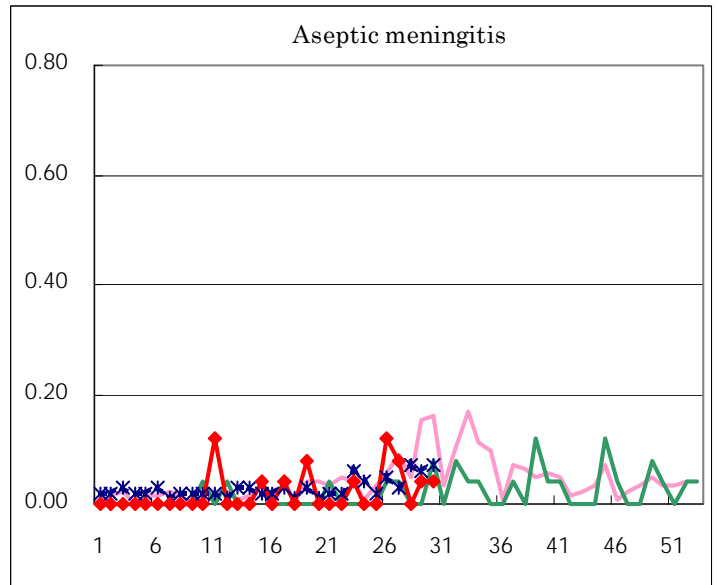
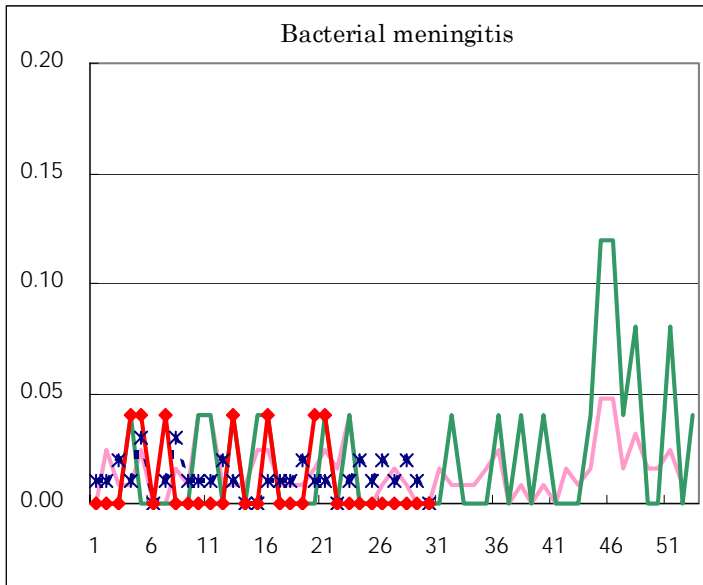
(Blank means 0.)

Disease Trend Graph (weekly reported cases per fixed-point in comparison)









Tokyo Metropolitan Government
Infectious Disease Surveillance Center