

INFECTIOUS DISEASES WEEKLY REPORT

TOKYO IDWR

Tokyo Metropolitan Institute of Public Health

23 August 2005 / Number 32

- Number of patients with the diseases required notifying all the cases
- Number of patients with the diseases to be reported by the designated clinics and hospitals
- Disease trend graph (weekly reported cases per fixed-point in comparison)

Surveillance System in Tokyo, Japan

The diseases which all physicians must report

All physicians must report to health centers the incidence of the diseases which are shown at page one. Health centers electronically report the individual case to Tokyo Metropolitan Infectious Disease Surveillance Center.

Fixed-point surveillance

The numbers of patients who visit designated clinics or hospitals during a week are reported to health centers (There are 37 in Tokyo). And they electronically report the numbers to Tokyo Metropolitan Infectious Disease Surveillance Center. We have about 200 fixed points (clinics and hospitals) in Tokyo.

1st Week is early January and 52nd Week is end of December.

Tokyo Metropolitan Infectious Disease Surveillance Center
Tokyo Metropolitan Institute of Public Health

TEL:81-3-3363-3213 FAX:81-3-5332-7365
e-mail: idsc@tokyo-eiken.go.jp
URL: idsc.tokyo-eiken.go.jp/

Number of patients with the diseases which all physicians must report

Category	Diseases	Tokyo					Japan	
		29th	30th	31st	32nd	Total	32nd	Total
I	Ebola hemorrhagic fever							
	Crimean-Congo hemorrhagic fever							
	Severe acute respiratory syndrome							
	Smallpox							
	Plague							
	Marburg disease							
	Lassa fever							
II	Acute poliomyelitis							
	Cholera			2		5		31
	Shigellosis	2	4			52	9	342
	Diphtheria							
	Typhoid fever					4	2	31
	Paratyphoid fever					3	1	9
III	Enterohemorrhagic <i>Escherichia coli</i> infection	8	9	13	14	108	137	1816
IV	Hepatitis E					5		(31)
	West Nile fever							
	Hepatitis A					13	(1)	(129)
	Echinococcosis			1		1		12
	Yellow fever							
	Psittacosis					2	1	26
	Relapsing fever							
	Q fever					3		8
	Rabies							
	High pathogenic avian influenza							
	Coccidioidomycosis							1
	Monkeypox							
	Hemorrhagic fever with renal syndrome							
	Anthrax							
	Scrub typhus (Tsutsugamushi disease)					3		104
	Dengue fever			1	1	6	2	24
	Nipah virus infection							
	Japanese spotted fever						2	28
	Japanese encephalitis							
	Hantavirus pulmonary syndrome							
	B virus disease							
	Brucellosis			1		1		1
Epidemic typhus								
Botulism					1			
Malaria		1			11		43	
Tularemia								
Lyme disease	1		2		3	1	5	
Lyssavirus infection								
Legionellosis		1	1		12	6	133	
Leptospirosis					1		(4)	
V	Amebiasis	4	4	2	8	117	7	423
	Acute viral hepatitis(excluding Hepatitis A,Hepatitis E)					27	4	183
	Acute encephalitis	1				13		(127)
	Cryptosporidiosis					1		5
	Creutzfeldt-Jakob Disease		1			11	2	83
	Sever invasive streptococcal infections					2	1	38
	Acquired immunodeficiency syndrome	6	5	11	14	271	11	710
	Giardiasis					8	2	42
	Meningococcal meningitis	1				3		8
	Congenital rubella syndrome							
	Syphilis	1	4		2	47	12	322
	Tetanus					1	1	58
	Vancomycin-resistant <i>Staphylococcus aureus</i> infection							
	Vancomycin-resistant <i>enterococcus</i> infection					8	1	45

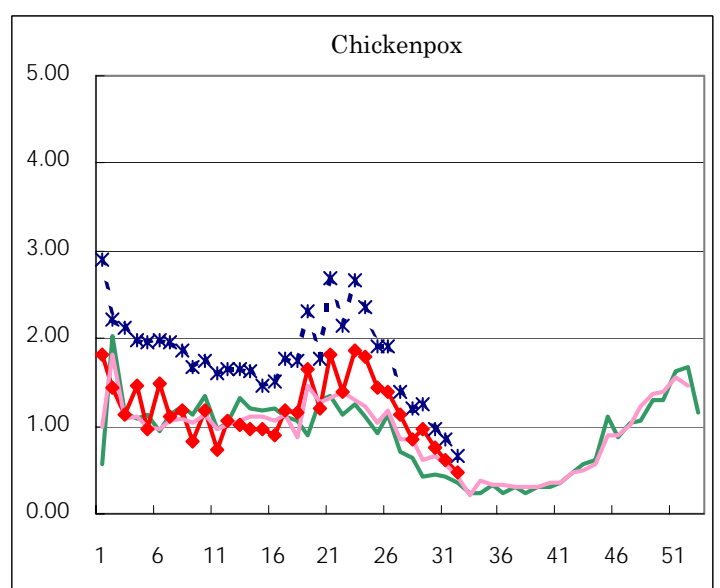
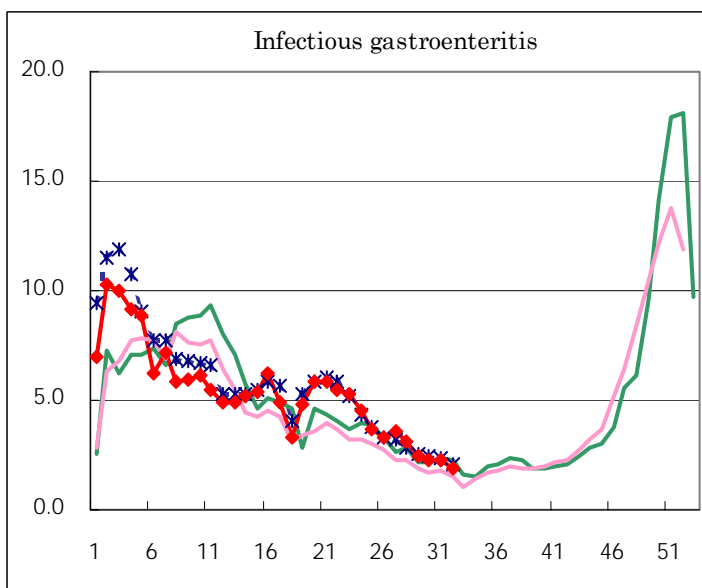
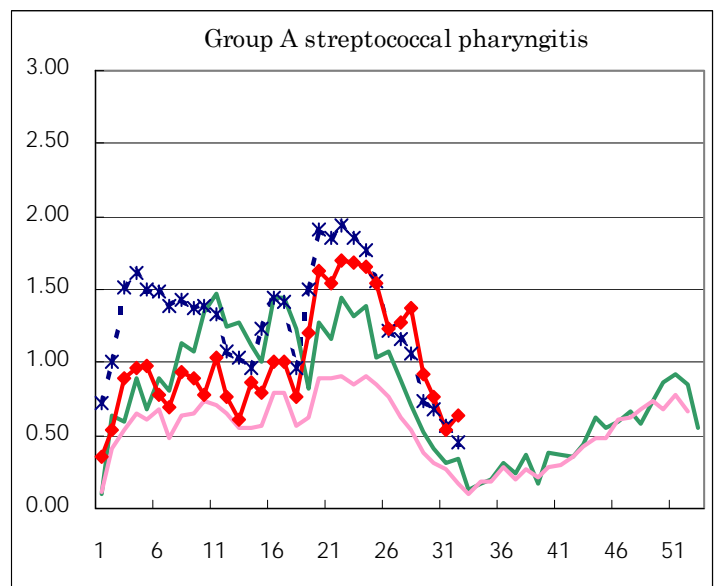
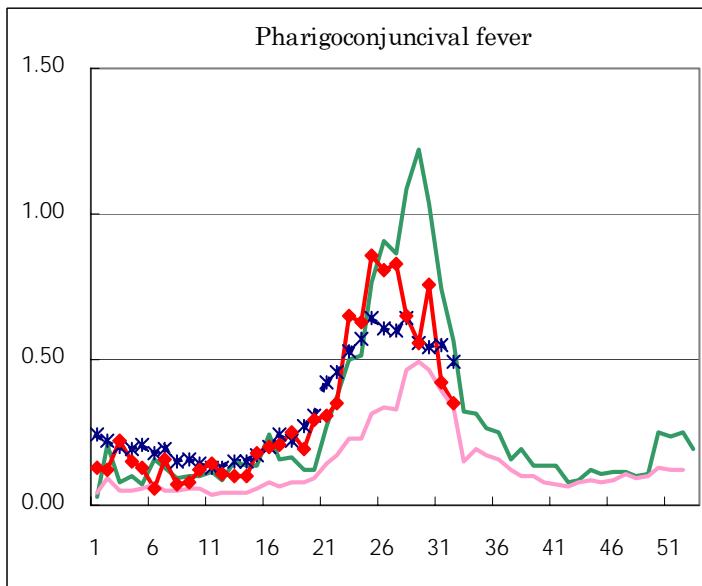
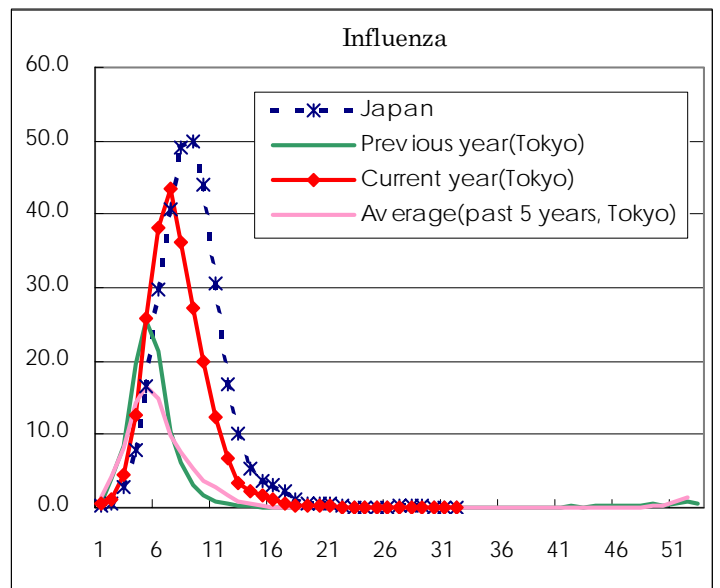
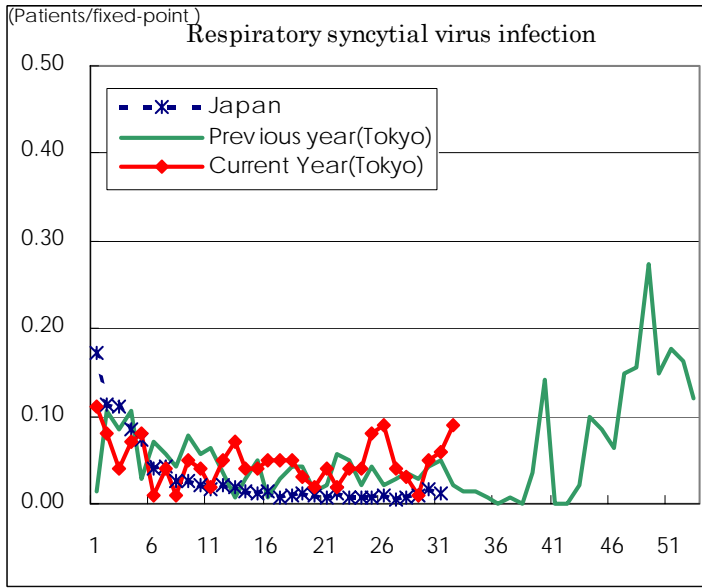
(Blank means 0.)

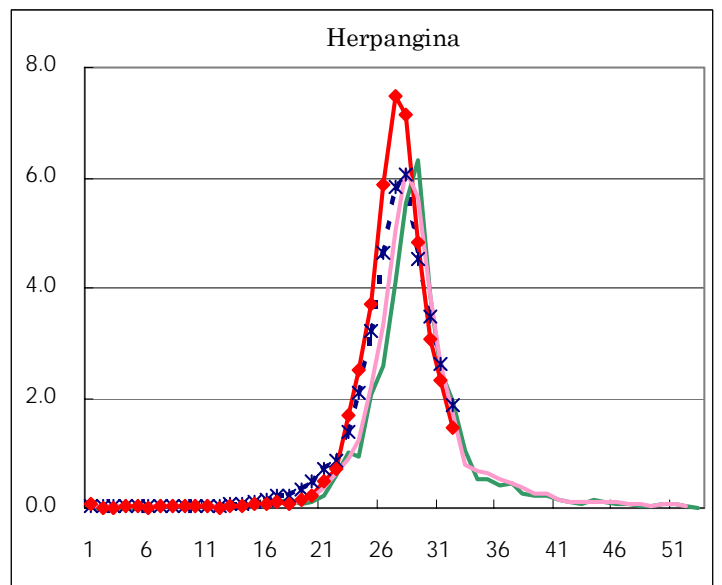
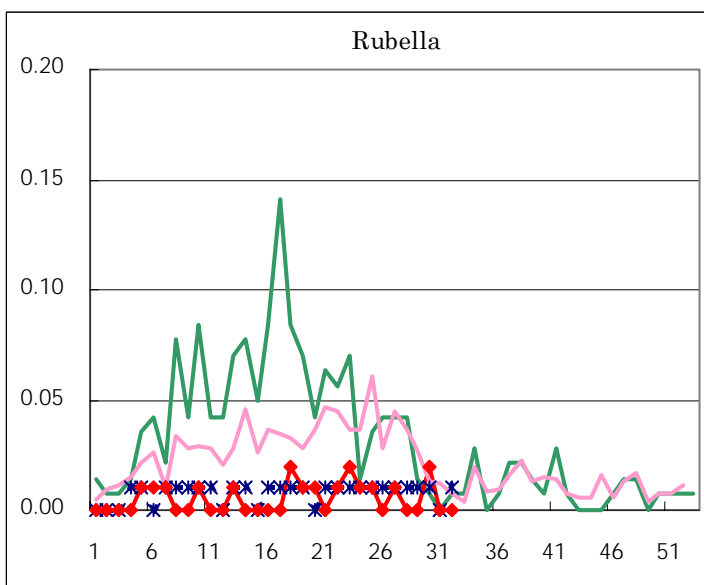
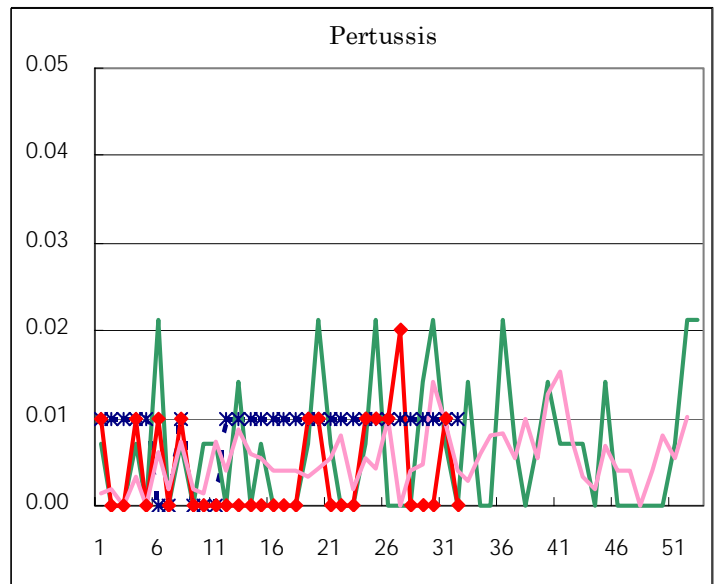
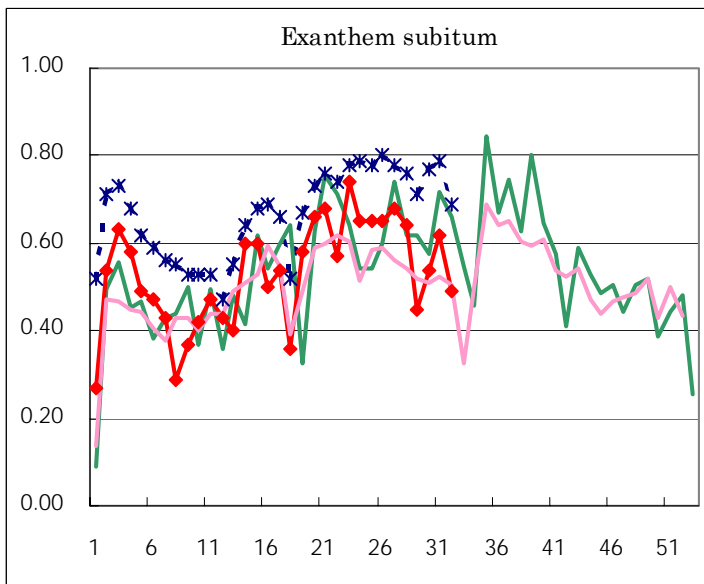
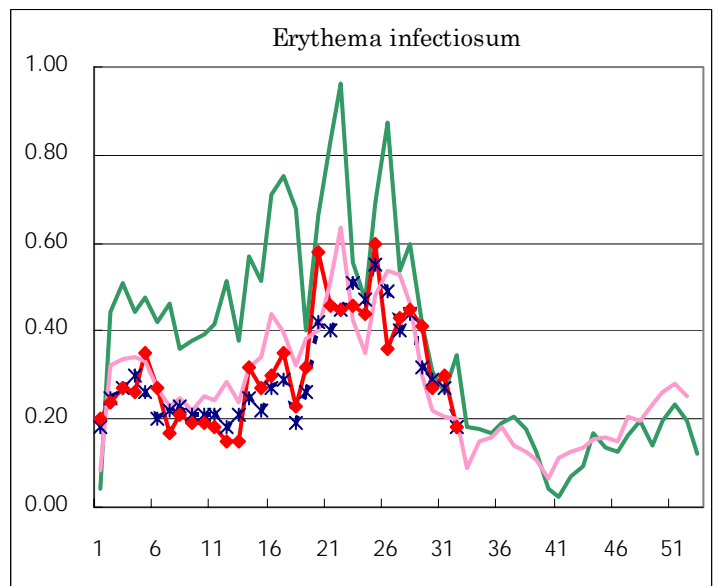
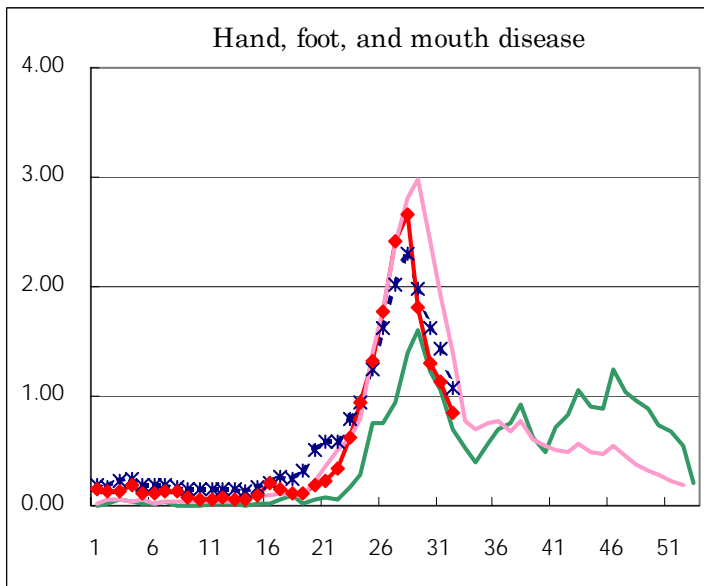
Number of patients with the diseases to be reported
by the designated clinics and hospitals

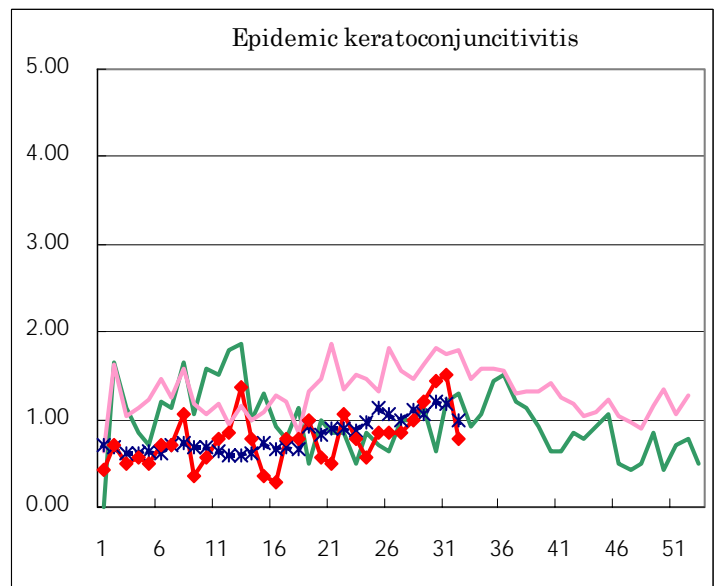
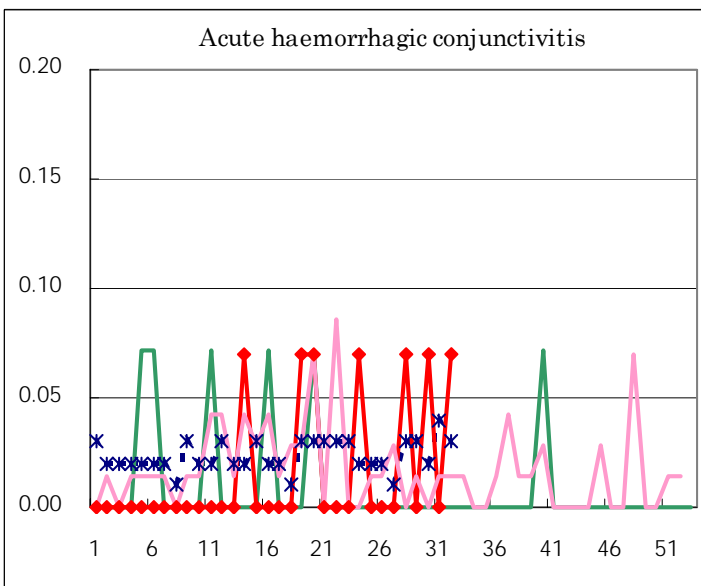
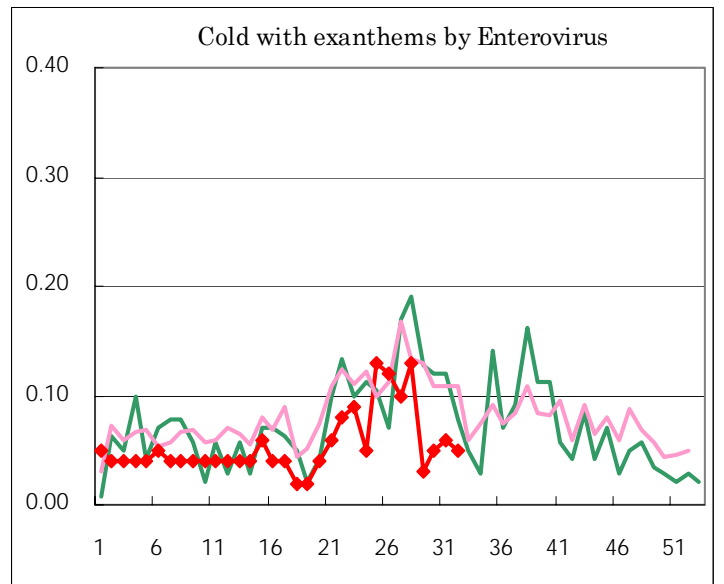
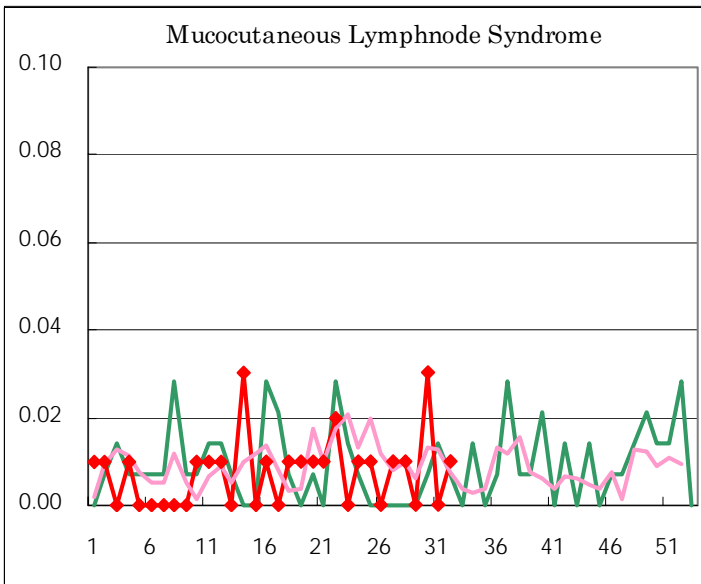
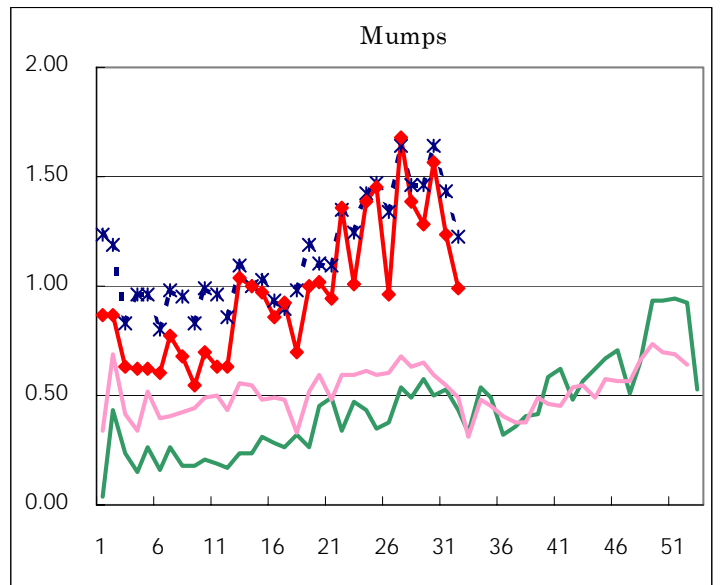
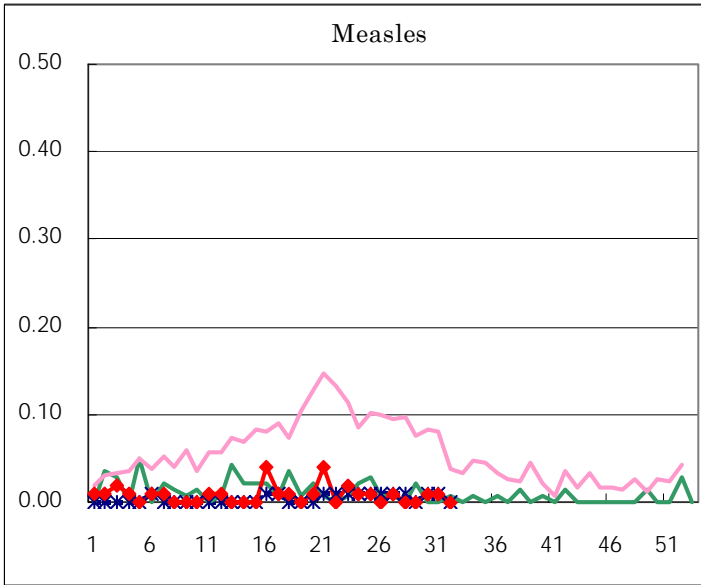
Diseases	Sex	2005				Total
		29th	30th	31st	32nd	
Respiratory syncytial virus infection	M	1	5	4	8	18
	F	1	2	5	5	13
Influenza	M					
	F	1	1			2
Pharyngoconjunctival fever	M	43	61	36	20	160
	F	37	47	23	30	137
Group A streptococcal pharyngitis	M	84	66	41	55	246
	F	46	44	35	35	160
Infectious gastroenteritis	M	188	168	168	155	679
	F	156	152	150	109	567
Chickenpox	M	68	58	46	36	208
	F	69	48	41	31	189
Hand, foot, and mouth disease	M	141	102	80	59	382
	F	118	82	81	62	343
Erythema infectiosum	M	28	16	23	13	80
	F	30	22	20	13	85
Exanthem subitum	M	28	40	48	38	154
	F	36	36	40	32	144
Pertussis	M			1		1
	F					
Rubella	M					
	F		3			3
Herpangina	M	350	228	168	110	856
	F	337	207	162	94	800
Measles	M			1		1
	F		2			2
Mumps	M	92	120	87	63	362
	F	90	103	89	77	359
Cold with exanthems by Enterovirus	M		5	2	4	11
	F	4	2	6	3	15
Mucocutaneous Lymphnode Syndrome	M		4			4
	F				1	1
Acute hemorrhagic conjunctivitis	M		1			1
	F				1	1
Epidemic keratoconjunctivitis	M	9	14	13	6	42
	F	8	6	8	5	27
Bacterial meningitis	M					
	F					
Aseptic meningitis	M		1		2	3
	F	1		1		2
Mycoplasma pneumonia	M	2		1		3
	F	4		3		7
Chlamydial pneumonia (excluding psittacosis)	M					
	F					
Measles in adults	M					
	F					

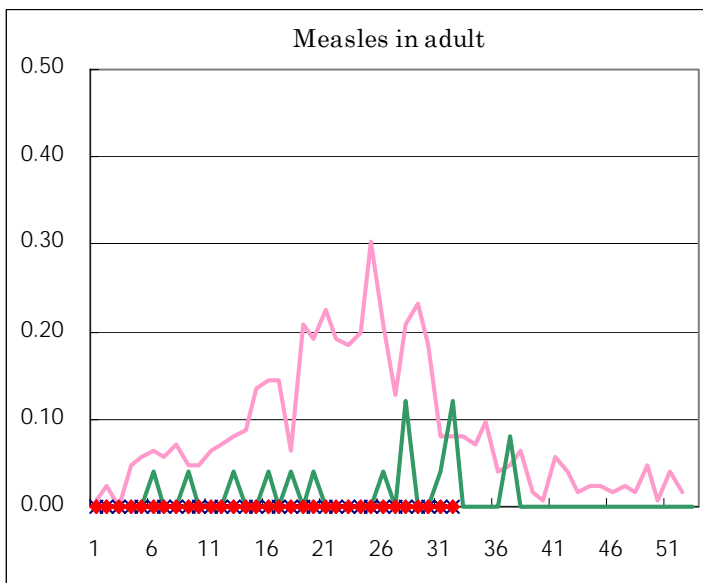
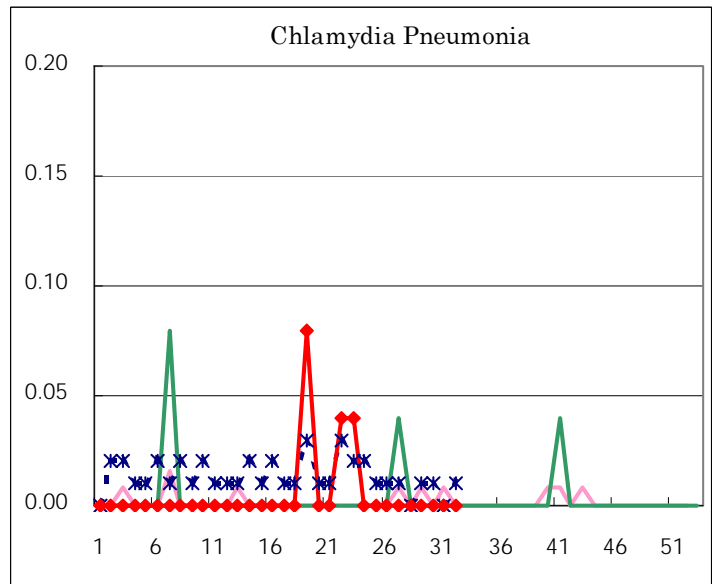
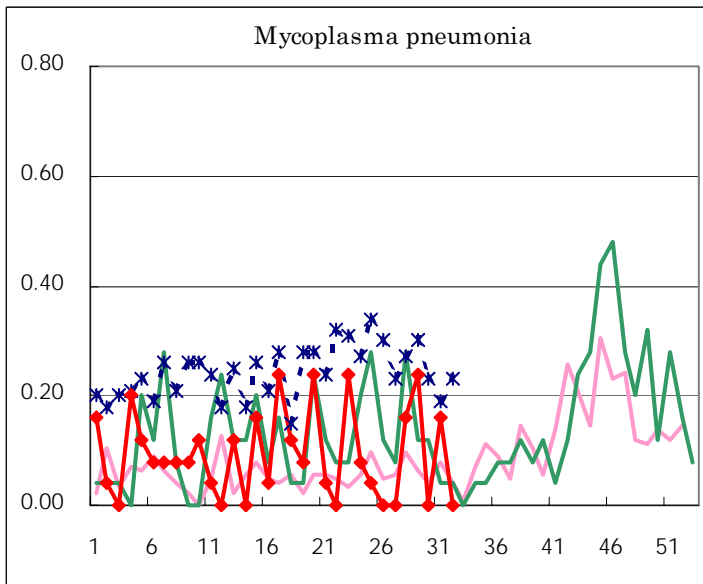
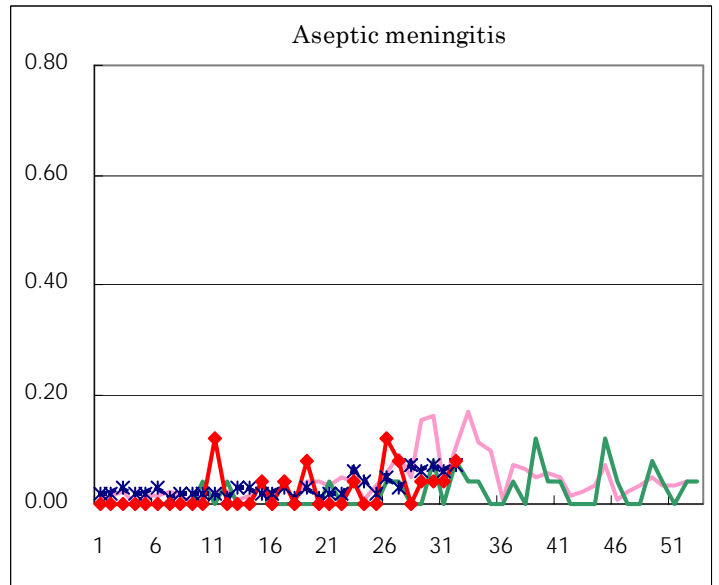
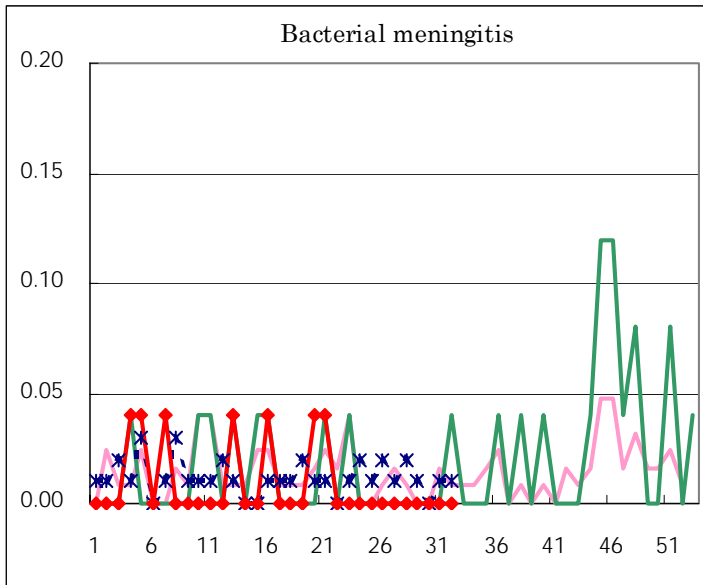
(Blank means 0.)

Disease Trend Graph (weekly reported cases per fixed-point in comparison)









Tokyo Metropolitan Government
Infectious Disease Surveillance Center