

INFECTIOUS DISEASES WEEKLY REPORT

# TOKYO IDWR

Tokyo Metropolitan Institute of Public Health

13 September 2005 / Number 35

- Number of patients with the diseases required notifying all the cases
- Number of patients with the diseases to be reported by the sentinel clinics and hospitals
- Disease trend graph (weekly reported cases per sentinel in comparison)

## Surveillance System in Tokyo, Japan

### The infectious diseases which all physicians must report

All physicians must report to health centers the incidence of the diseases which are shown at page one. Health centers electronically report the individual cases to Tokyo Metropolitan Infectious Disease Surveillance Center.

### The infectious diseases required to be reported by the sentinels

The numbers of patients who visit the sentinel clinics or hospitals during a week are reported to health centers in Tokyo. And they electronically report the numbers to Tokyo Metropolitan Infectious Disease Surveillance Center. We have about 260 sentinel clinics and hospitals in Tokyo.

1<sup>st</sup> Week is early January and 52<sup>nd</sup> Week is end of December.

Tokyo Metropolitan Infectious Disease Surveillance Center  
Tokyo Metropolitan Institute of Public Health

TEL:81-3-3363-3213 FAX:81-3-5332-7365  
e-mail:[idsc@tokyo-eiken.go.jp](mailto:idsc@tokyo-eiken.go.jp)  
URL:[idsc.tokyo-eiken.go.jp/](http://idsc.tokyo-eiken.go.jp/)

## Number of patients with the diseases which all physicians must report

Category	Diseases	Tokyo				Japan		
		32nd	33rd	34th	35th	Total	35th	Total
I	Ebola hemorrhagic fever							
	Crimean-Congo hemorrhagic fever							
	Severe acute respiratory syndrome							
	Smallpox							
	Plague							
	Marburg disease							
	Lassa fever							
II	Acute poliomyelitis							
	Cholera					5		33
	Shigellosis		1	2	4	59	18	378
	Diphtheria							
	Typhoid fever		1	1		6	1	34
	Paratyphoid fever					3	1	11
III	Enterohemorrhagic <i>Escherichia coli</i> infection	14	19	20	13	160	145	2349
IV	Hepatitis E			1		6	(1)	(32)
	West Nile fever							
	Hepatitis A					13		(132)
	Echinococcosis					1		12
	Yellow fever							
	Psittacosis					2		26
	Relapsing fever							
	Q fever					3		8
	Rabies							
	High pathogenic avian influenza							
	Coccidioidomycosis							2
	Monkeypox							
	Hemorrhagic fever with renal syndrome							
	Anthrax							
	Scrub typhus (Tsutsugamushi disease)					3		104
	Dengue fever	1		2	3	11	6	38
	Nipah virus infection							
	Japanese spotted fever						2	33
	Japanese encephalitis							
	Hantavirus pulmonary syndrome							
	B virus disease							
Brucellosis					1		1	
Epidemic typhus								
Botulism					1			
Malaria			1		12		46	
Tularemia								
Lyme disease					3		5	
Lyssavirus infection								
Legionellosis		2			14	2	145	
Leptospirosis					1		(4)	
V	Amebiasis	8	5	1	3	126	10	467
	Acute viral hepatitis(excluding Hepatitis A,Hepatitis E)			1	1	29	2	193
	Acute encephalitis					13		(130)
	Cryptosporidiosis					1	1	6
	Creutzfeldt-Jakob Disease					11	2	99
	Sever invasive streptococcal infections					2	2	42
	Acquired immunodeficiency syndrome	14	9	11	8	299	8	789
	Giardiasis					8		45
	Meningococcal meningitis					3		8
	Congenital rubella syndrome							
	Syphilis	2	2	1	1	51	5	356
	Tetanus					1		68
	Vancomycin-resistant <i>Staphylococcus aureus</i> infection							
	Vancomycin-resistant <i>enterococcus</i> infection			1		9	1	50

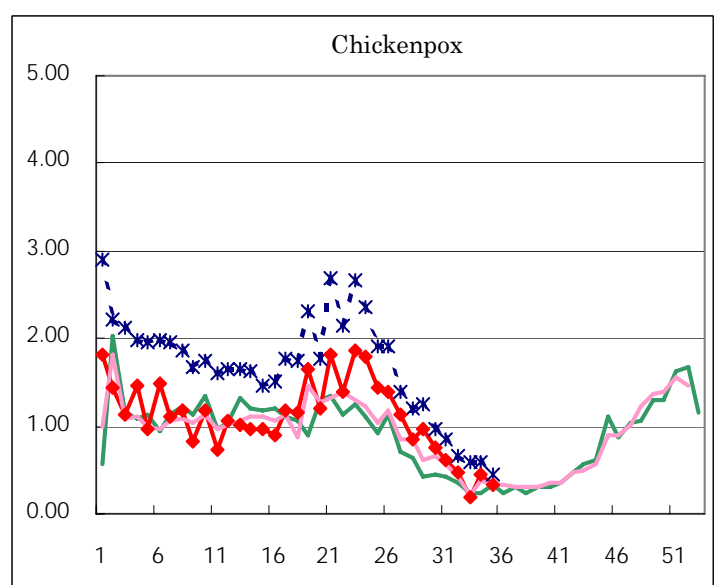
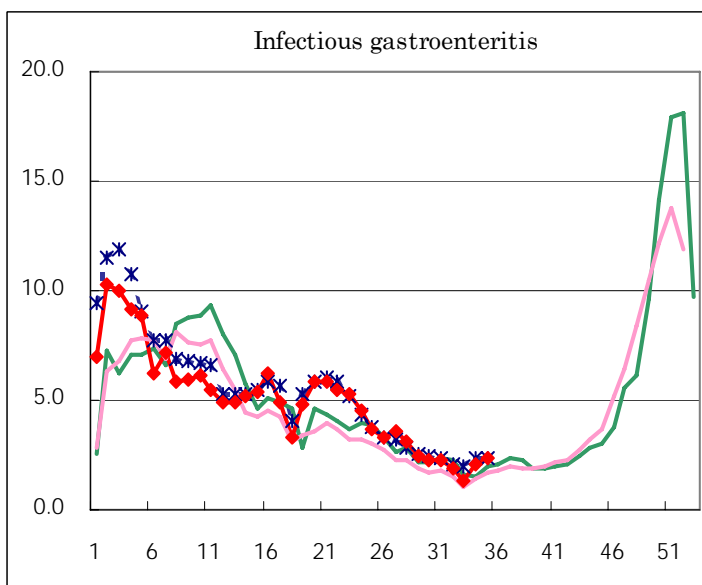
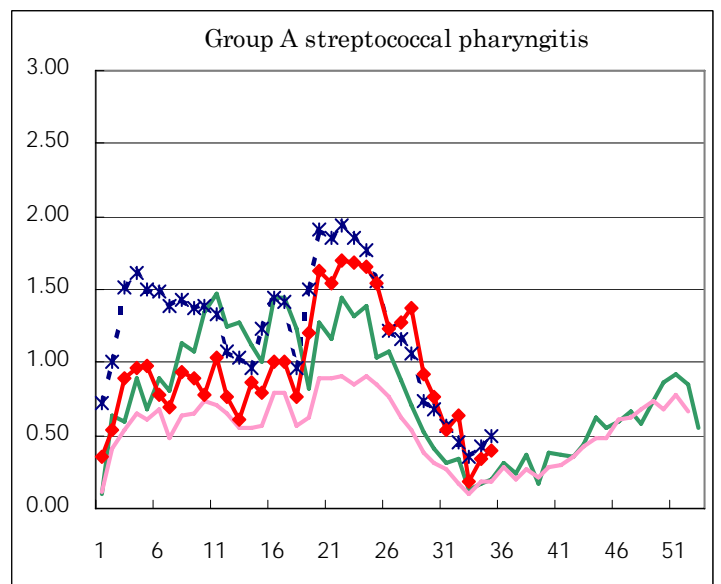
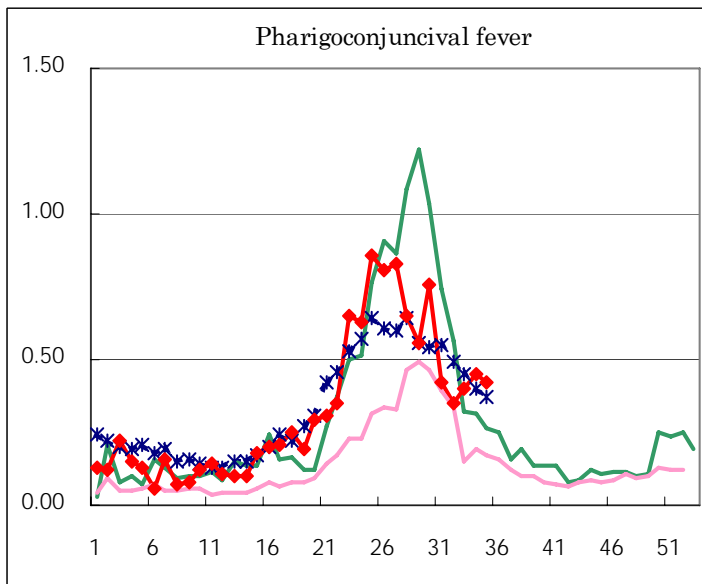
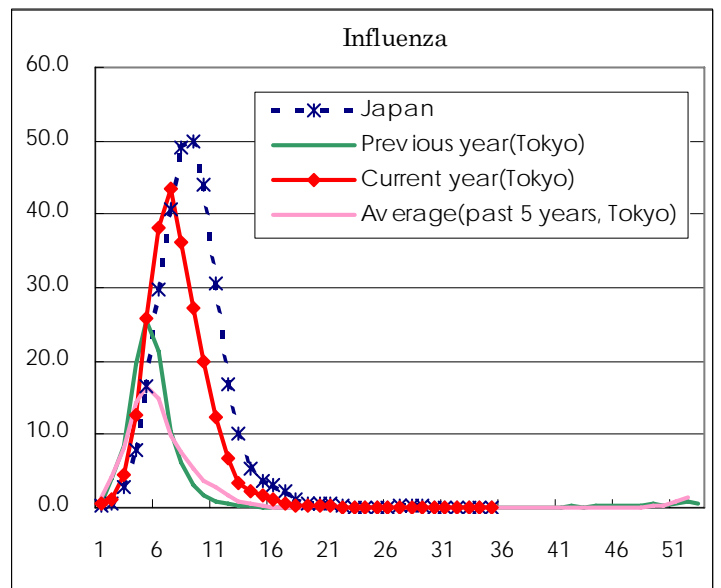
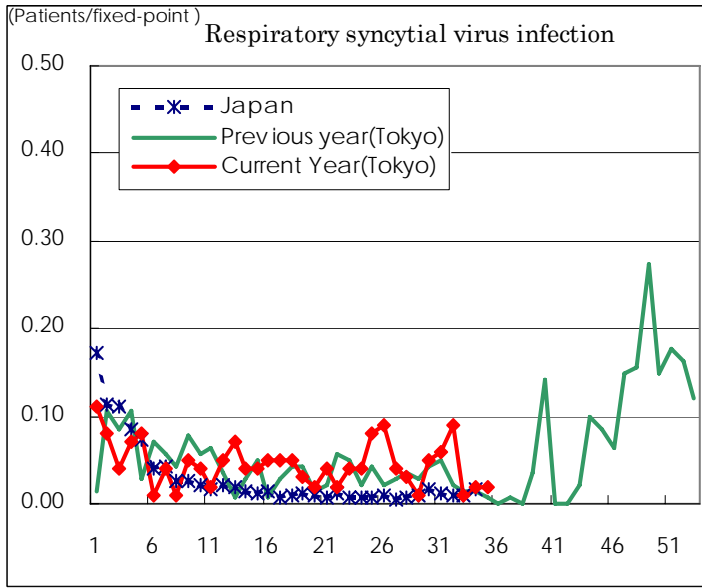
( Blank means 0. )

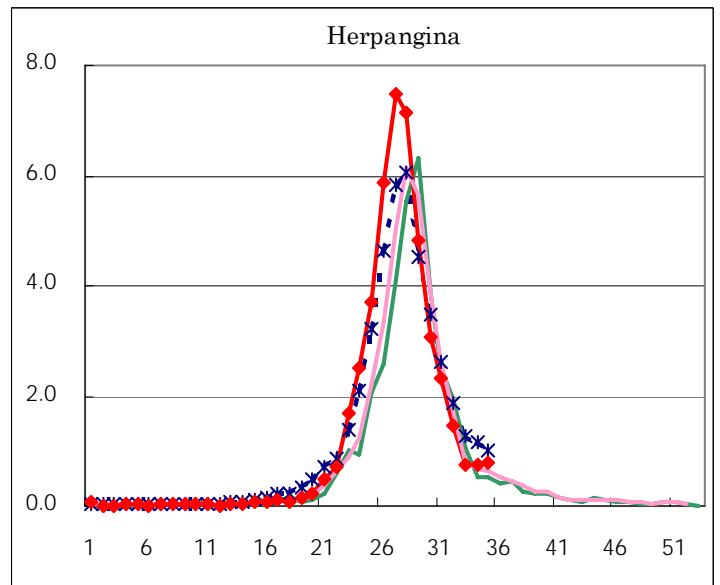
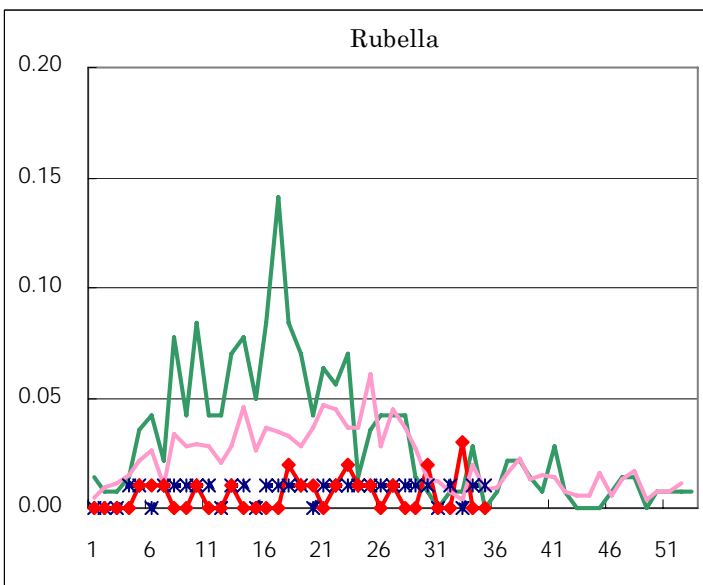
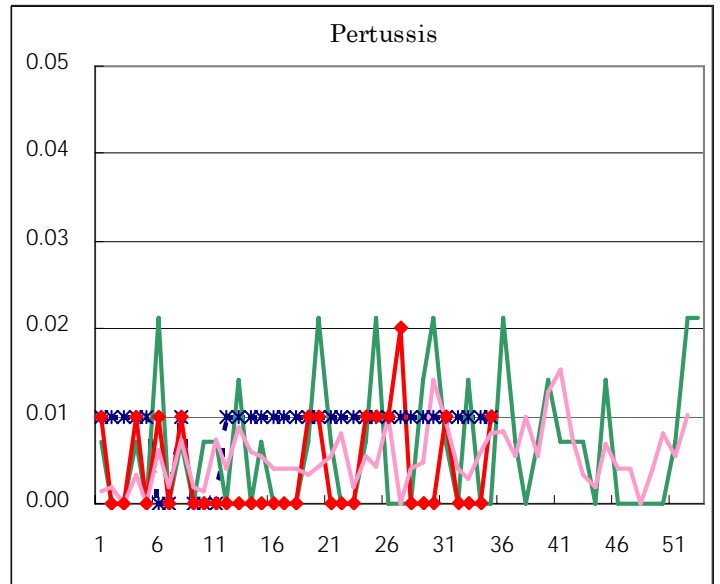
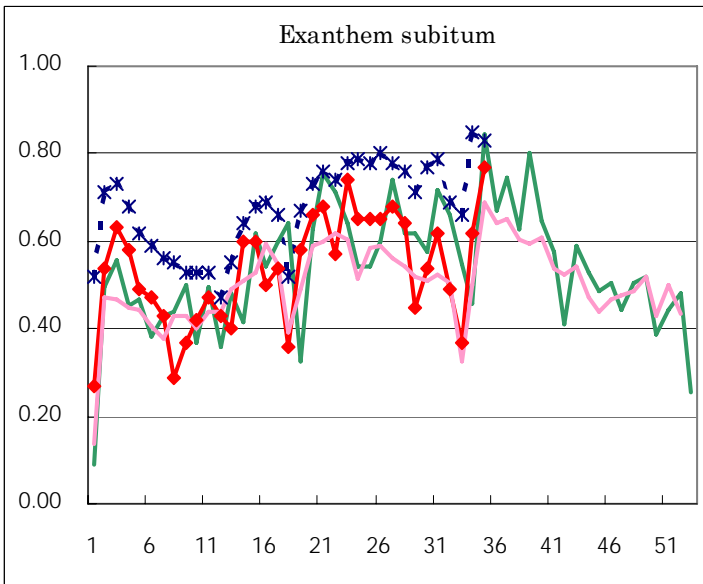
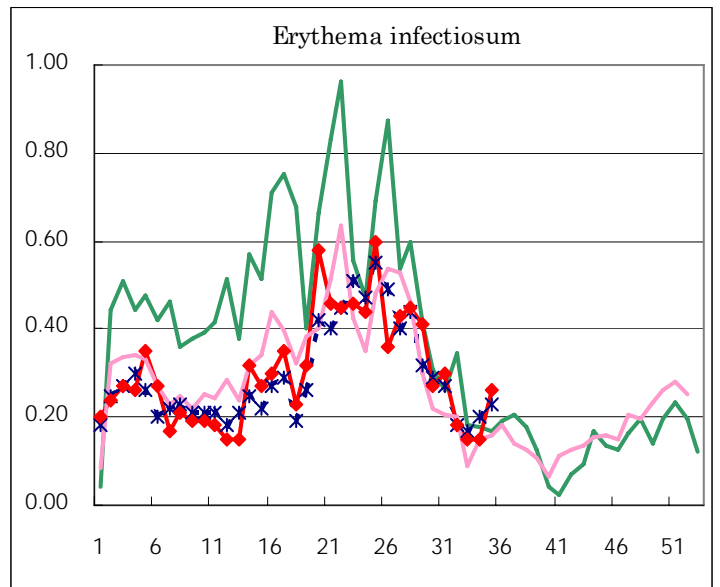
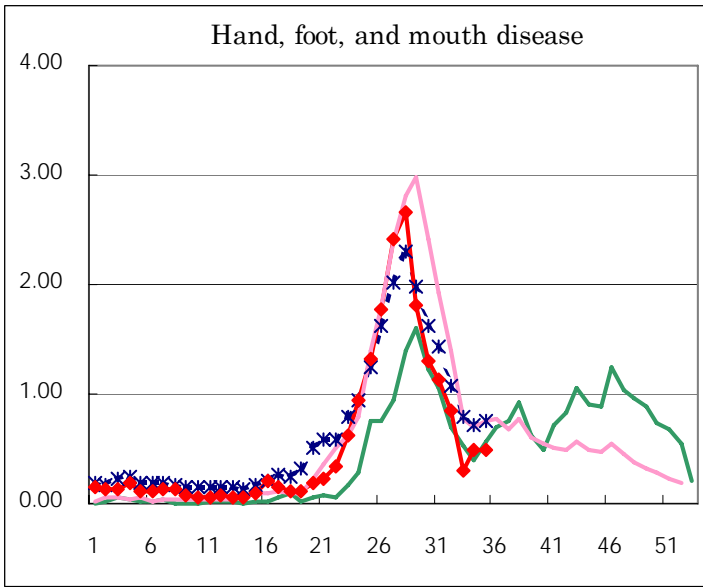
Number of patients with the diseases to be reported  
by the designated clinics and hospitals

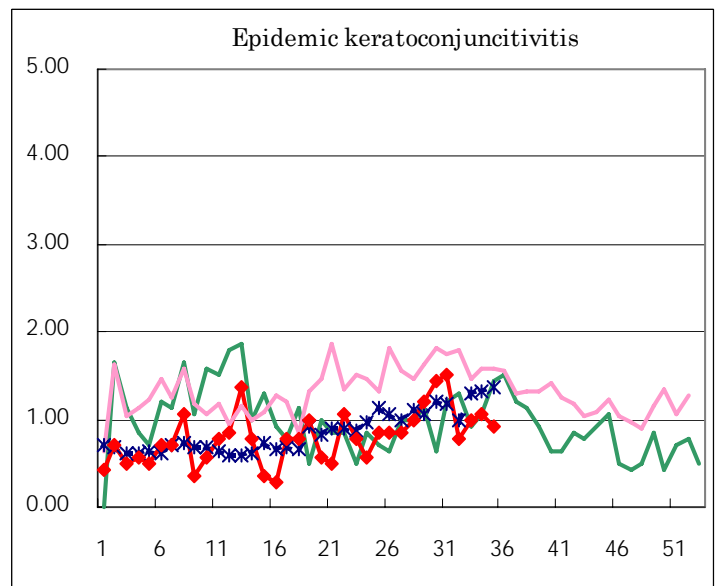
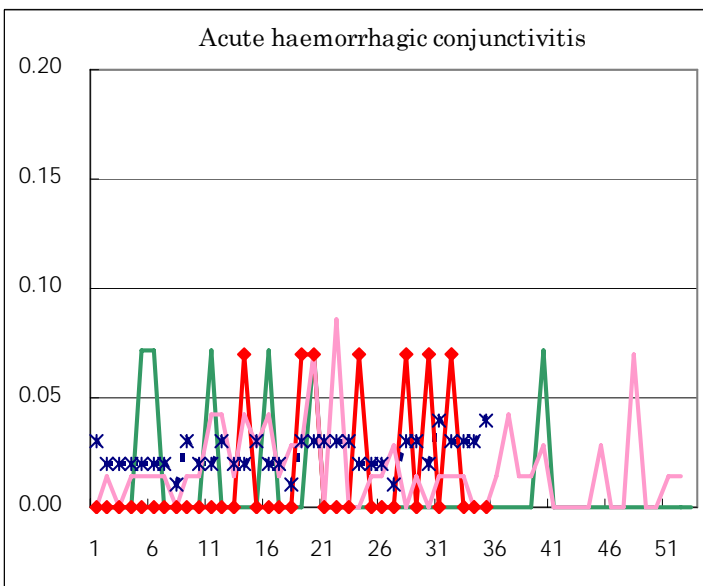
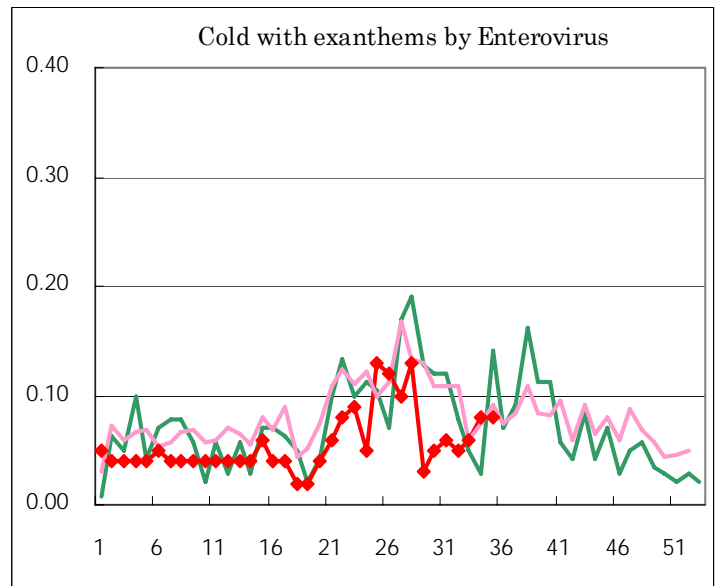
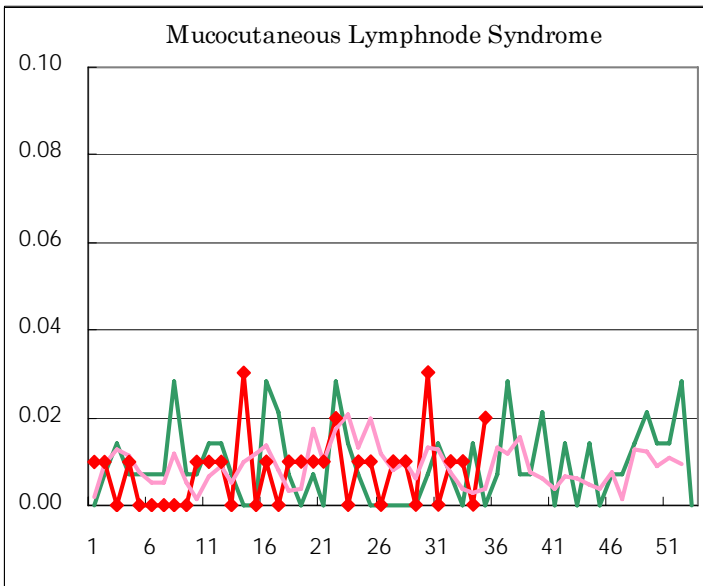
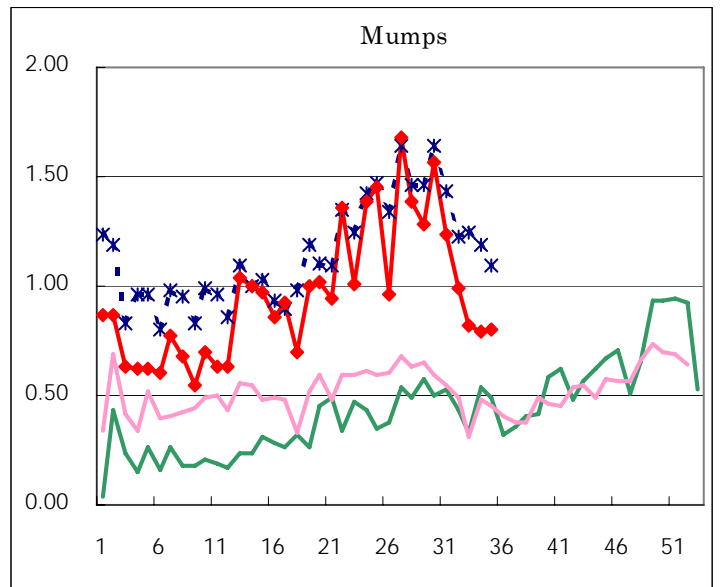
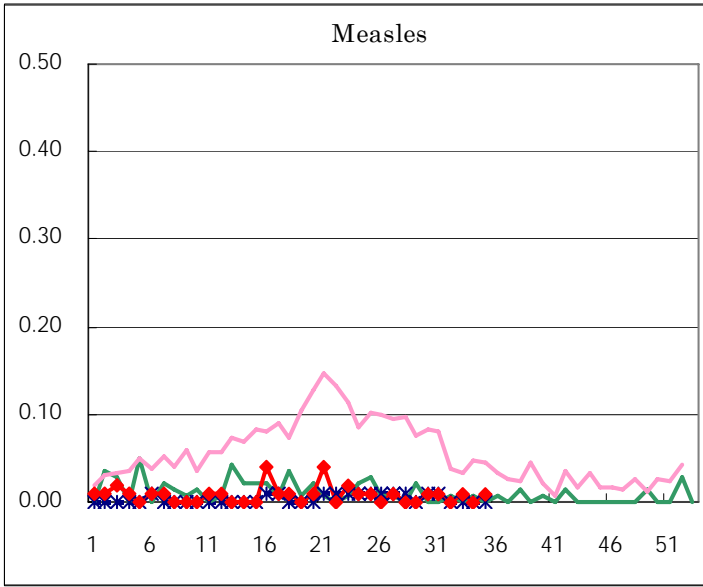
Diseases	Sex	2005				Total
		32nd	33rd	34th	35th	
Respiratory syncytial virus infection	M	8	1	1	2	12
	F	5	1	2	1	9
Influenza	M					
	F					
Pharyngoconjunctival fever	M	20	40	40	32	132
	F	30	17	24	28	99
Group A streptococcal pharyngitis	M	55	12	25	30	122
	F	35	13	23	27	98
Infectious gastroenteritis	M	155	111	169	181	616
	F	109	82	125	156	472
Chickenpox	M	36	9	30	21	96
	F	31	20	34	24	109
Hand, foot, and mouth disease	M	59	21	39	38	157
	F	62	22	32	31	147
Erythema infectiosum	M	13	12	11	13	49
	F	13	9	11	24	57
Exanthem subitum	M	38	22	55	52	167
	F	32	30	33	57	152
Pertussis	M				1	1
	F				1	1
Rubella	M					
	F		4			4
Herpangina	M	110	55	54	62	281
	F	94	53	49	48	244
Measles	M				1	1
	F		2			2
Mumps	M	63	65	61	67	256
	F	77	52	51	46	226
Cold with exanthems by Enterovirus	M	4	4	6	8	22
	F	3	4	5	4	16
Mucocutaneous Lymphnode Syndrome	M		1		2	3
	F	1			1	2
Acute hemorrhagic conjunctivitis	M					
	F	1				1
Epidemic keratoconjunctivitis	M	6	10	5	8	29
	F	5	4	10	5	24
Bacterial meningitis	M					
	F		2		1	3
Aseptic meningitis	M	2	1	2		5
	F					
Mycoplasma pneumonia	M		1	2	1	4
	F		1		2	3
Chlamydial pneumonia (excluding psittacosis)	M					
	F					
Measles in adults	M					
	F					

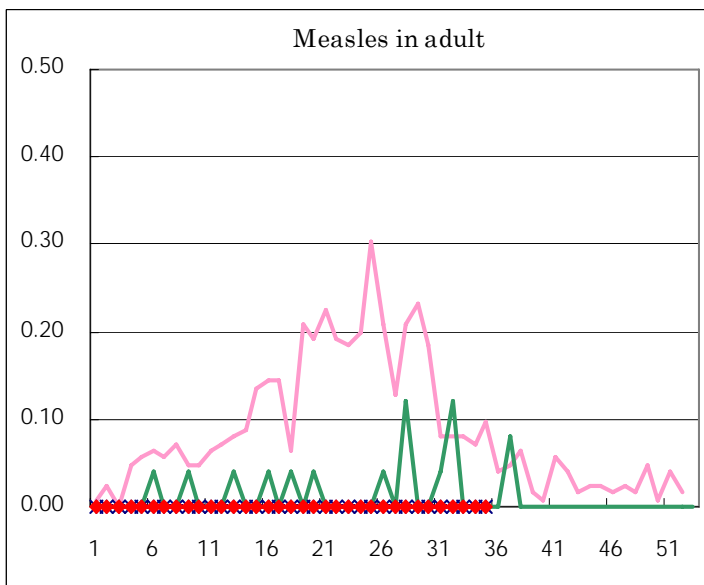
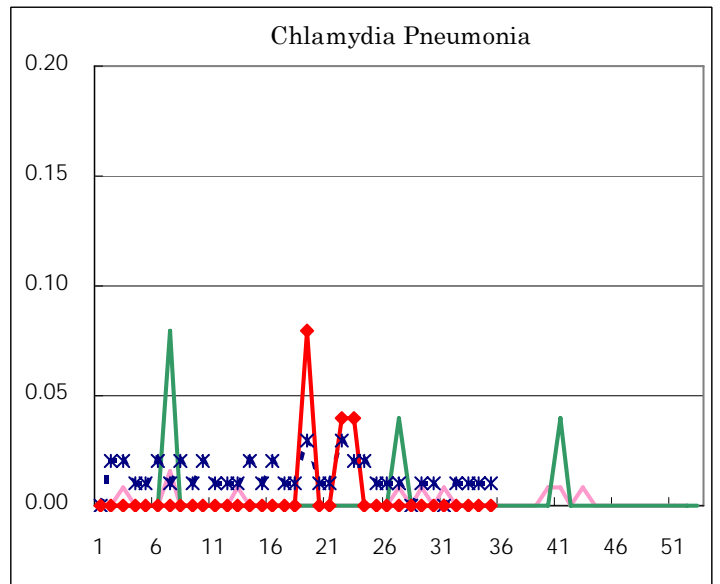
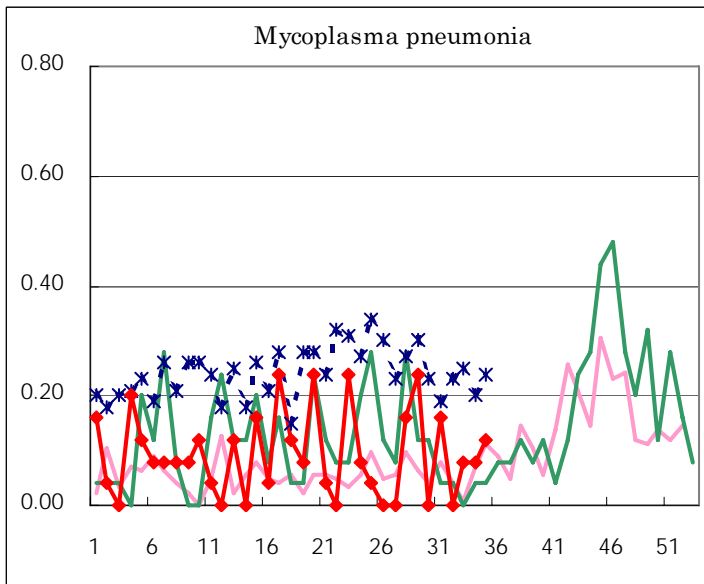
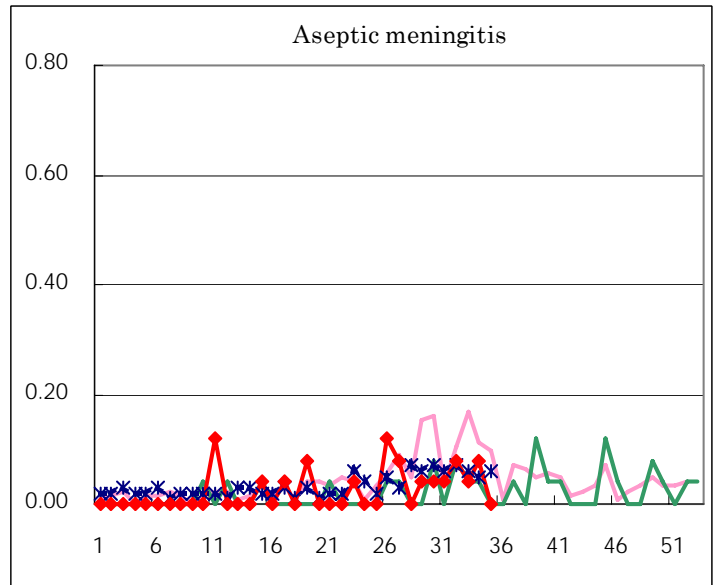
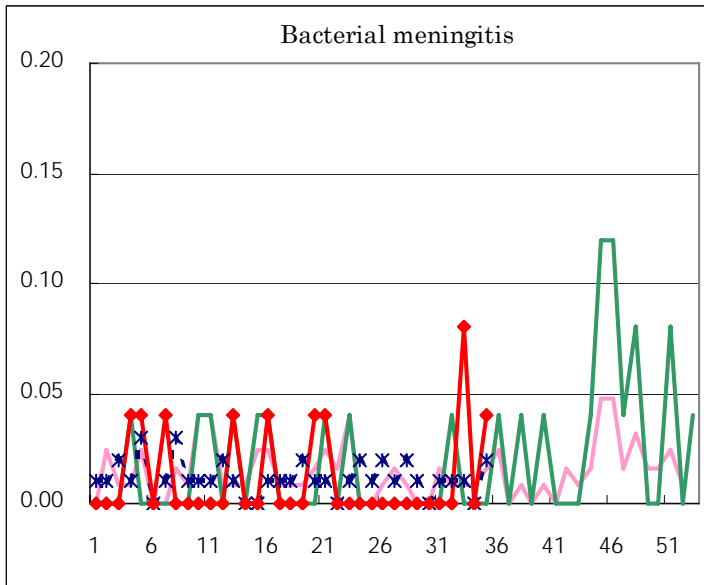
( Blank means 0. )

# Disease Trend Graph (weekly reported cases per fixed-point in comparison)









Tokyo Metropolitan Government  
**Infectious Disease Surveillance Center**