

INFECTIOUS DISEASES WEEKLY REPORT

# TOKYO IDWR

Tokyo Metropolitan Institute of Public Health

4 October 2005 / Number 38

- Number of patients with the diseases required notifying all the cases
- Number of patients with the diseases to be reported by the sentinel clinics and hospitals
- Disease trend graph (weekly reported cases per sentinel in comparison)

## Surveillance System in Tokyo, Japan

### The infectious diseases which all physicians must report

All physicians must report to health centers the incidence of the diseases which are shown at page one. Health centers electronically report the individual cases to Tokyo Metropolitan Infectious Disease Surveillance Center.

### The infectious diseases required to be reported by the sentinels

The numbers of patients who visit the sentinel clinics or hospitals during a week are reported to health centers in Tokyo. And they electronically report the numbers to Tokyo Metropolitan Infectious Disease Surveillance Center. We have about 260 sentinel clinics and hospitals in Tokyo.

1<sup>st</sup> Week is early January and 52<sup>rd</sup> Week is end of December.

Tokyo Metropolitan Infectious Disease Surveillance Center  
Tokyo Metropolitan Institute of Public Health

TEL:81-3-3363-3213 FAX:81-3-5332-7365  
e-mail:[idsc@tokyo-eiken.go.jp](mailto:idsc@tokyo-eiken.go.jp)  
URL:[idsc.tokyo-eiken.go.jp/](http://idsc.tokyo-eiken.go.jp/)

## Number of patients with the diseases which all physicians must report

Category	Diseases	Tokyo				Japan		
		35th	36th	37th	38th	Total	38th	Total
I	Ebola hemorrhagic fever							
	Crimean-Congo hemorrhagic fever							
	Severe acute respiratory syndrome							
	Smallpox							
	Plague							
	Marburg disease							
	Lassa fever							
II	Acute poliomyelitis							
	Cholera					5		33
	Shigellosis	4	1	6	1	67	15	423
	Diphtheria							
	Typhoid fever			1		7	1	37
	Paratyphoid fever					3		11
III	Enterohemorrhagic <i>Escherichia coli</i> infection	13	20	12	1	193	54	2732
IV	Hepatitis E			1		7		(33)
	West Nile fever							
	Hepatitis A				4	17		(134)
	Echinococcosis					1	1	14
	Yellow fever							
	Psittacosis					2		26
	Relapsing fever							
	Q fever					3		8
	Rabies							
	High pathogenic avian influenza							
	Coccidioidomycosis							2
	Monkeypox							
	Hemorrhagic fever with renal syndrome							
	Anthrax							
	Scrub typhus (Tsutsugamushi disease)					3		105
	Dengue fever	3	3	5	1	20	1	51
	Nipah virus infection							
	Japanese spotted fever						3	45
	Japanese encephalitis							1
	Hantavirus pulmonary syndrome							
	B virus disease							
Brucellosis					1		1	
Epidemic typhus								
Botulism					1			
Malaria					12		48	
Tularemia								
Lyme disease		1			4		6	
Lyssavirus infection								
Legionellosis		1			15	9	171	
Leptospirosis					1		(4)	
V	Amebiasis	3	5	2	1	134	6	502
	Acute viral hepatitis(excluding Hepatitis A,Hepatitis E)	1				29	1	208
	Acute encephalitis					13	(2)	(143)
	Cryptosporidiosis					1		6
	Creutzfeldt-Jakob Disease					11		109
	Sever invasive streptococcal infections					2		43
	Acquired immunodeficiency syndrome	8	8	5	2	314	4	847
	Giardiasis					8	1	51
	Meningococcal meningitis					3		9
	Congenital rubella syndrome							
	Syphilis	1	2	1	1	55	5	388
	Tetanus					1		73
	Vancomycin-resistant <i>Staphylococcus aureus</i> infection							
	Vancomycin-resistant <i>enterococcus</i> infection		1			10		54

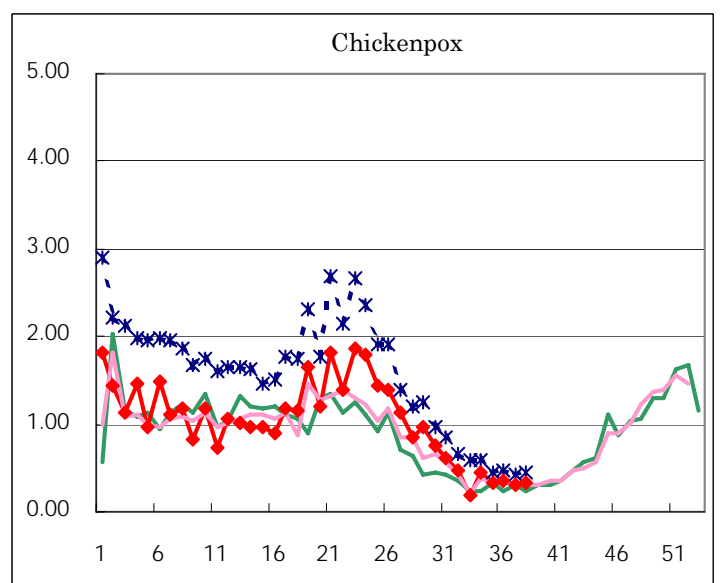
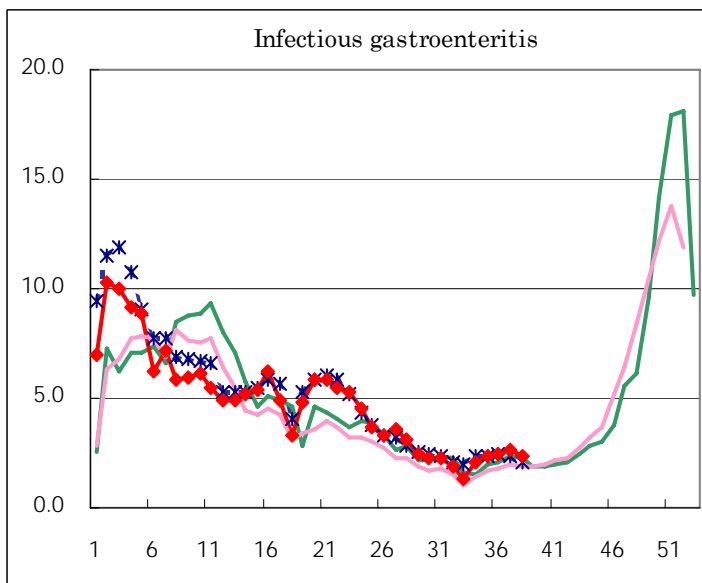
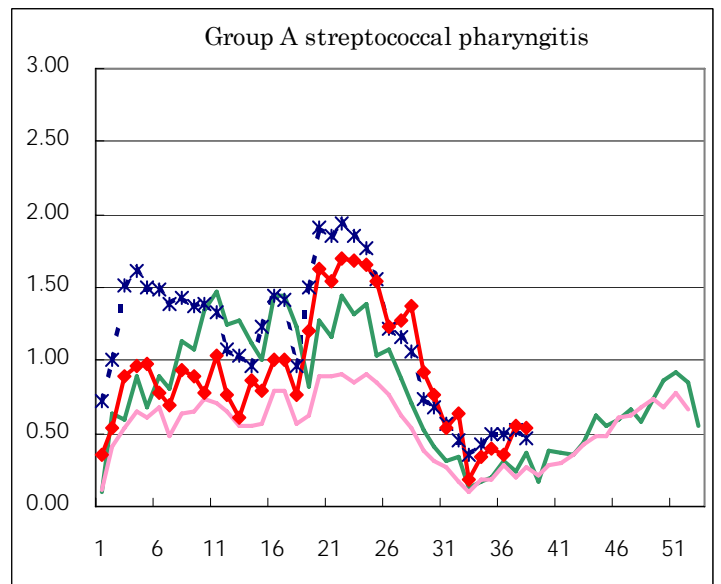
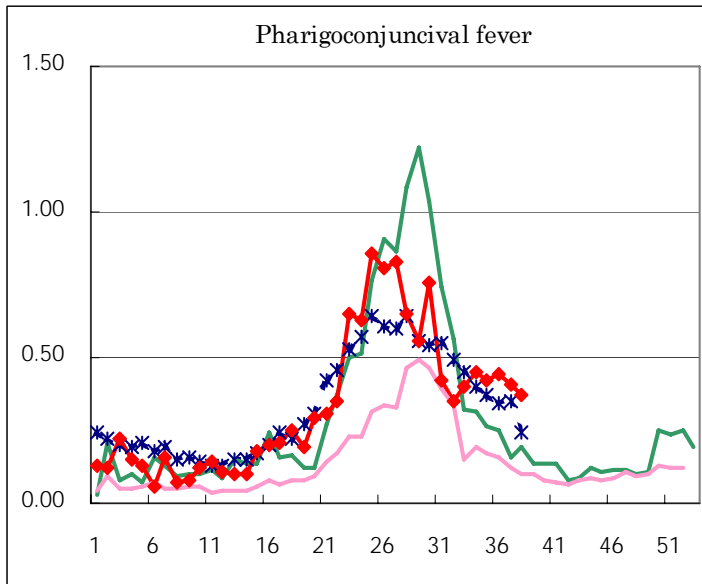
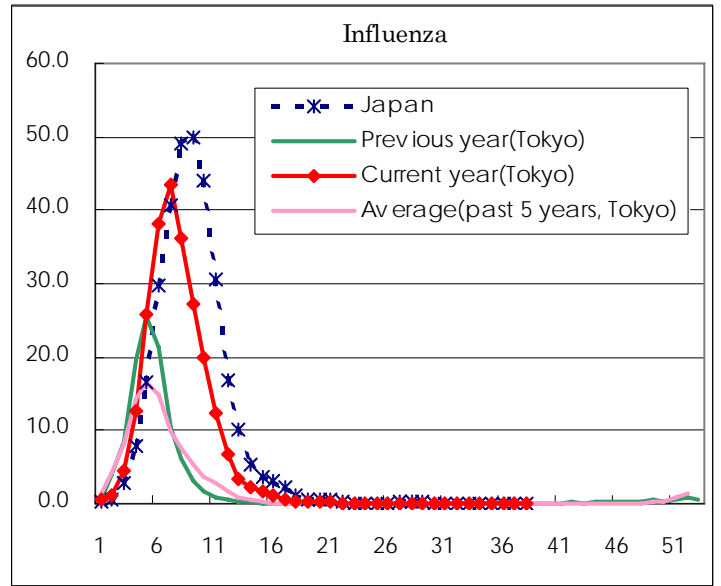
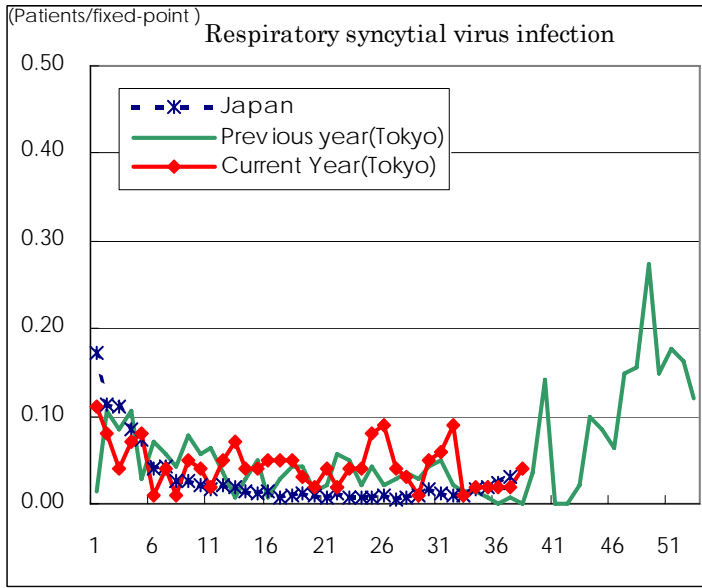
( Blank means 0. )

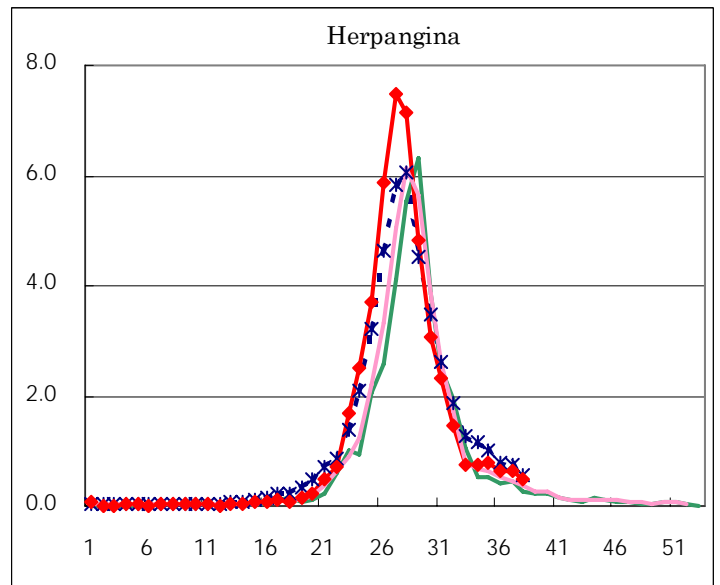
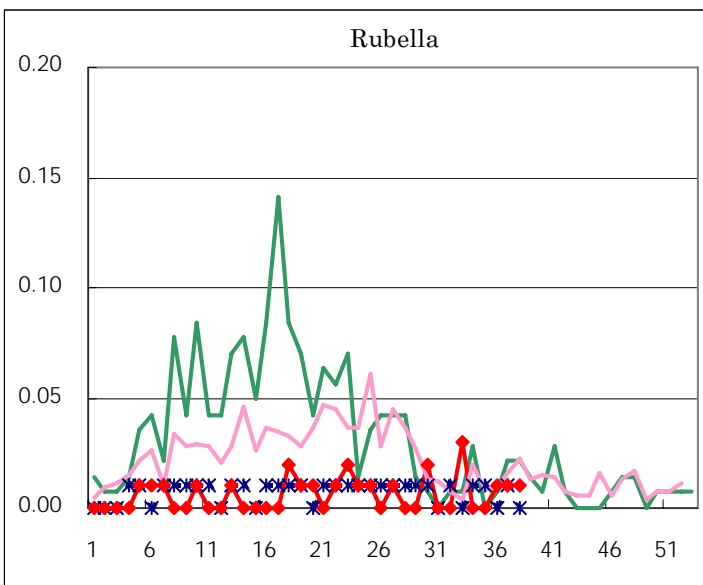
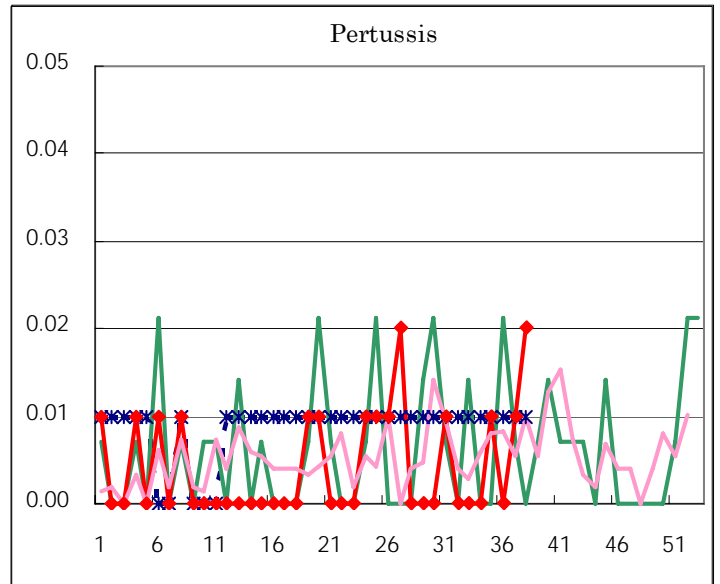
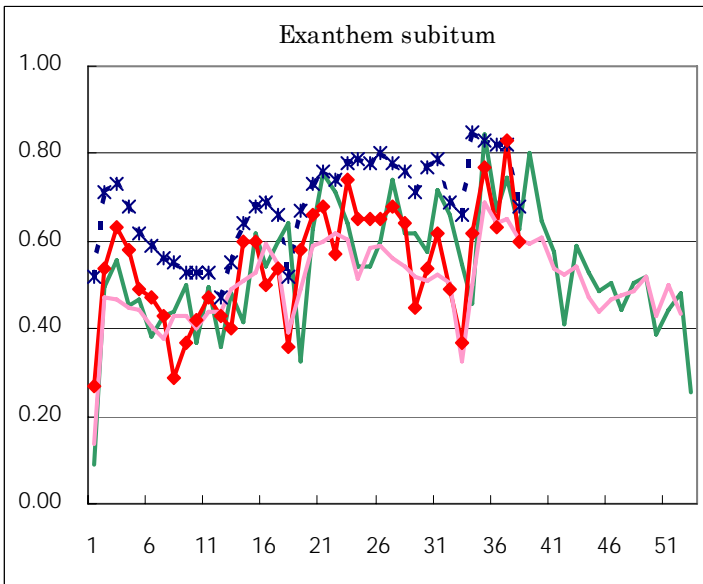
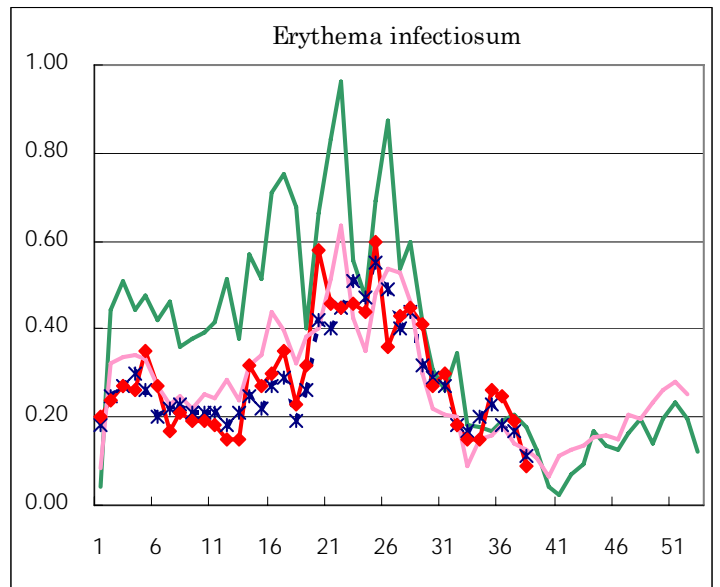
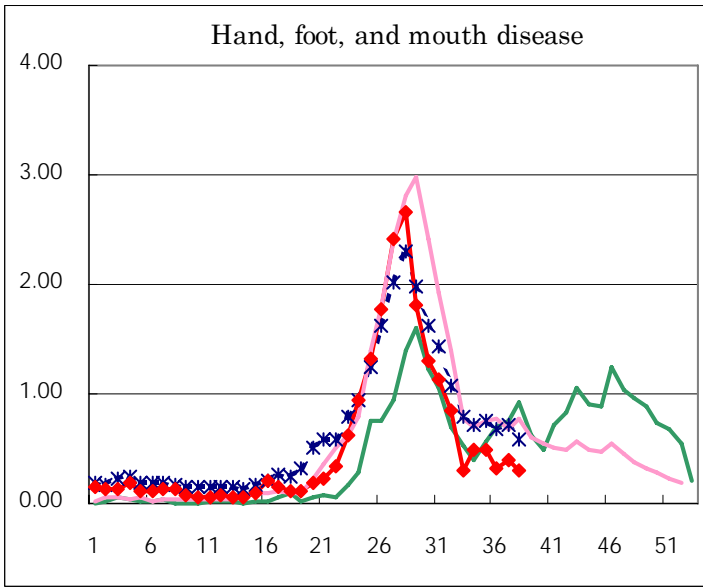
Number of patients with the diseases to be reported  
by the designated clinics and hospitals

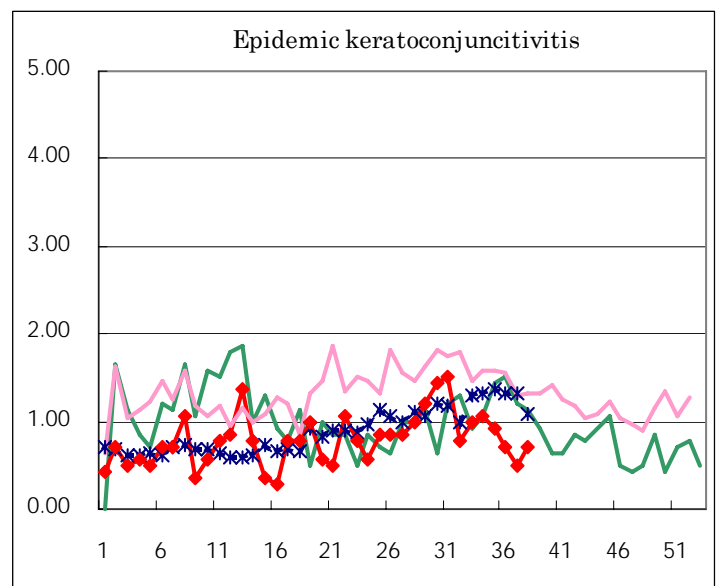
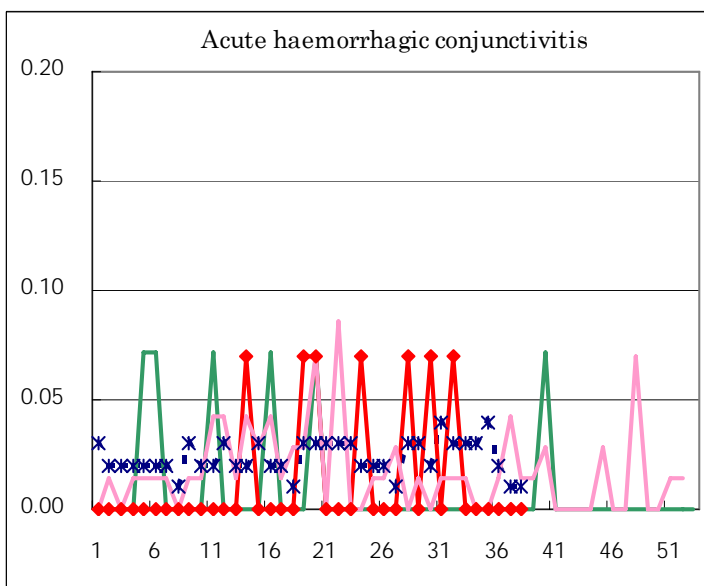
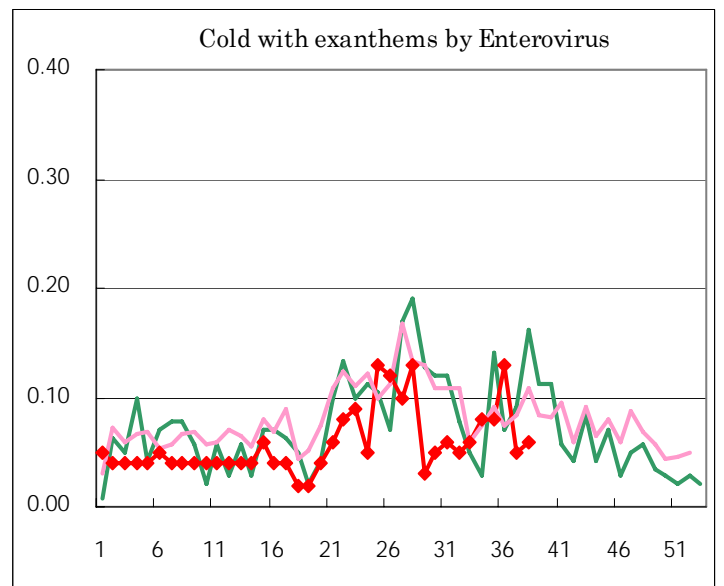
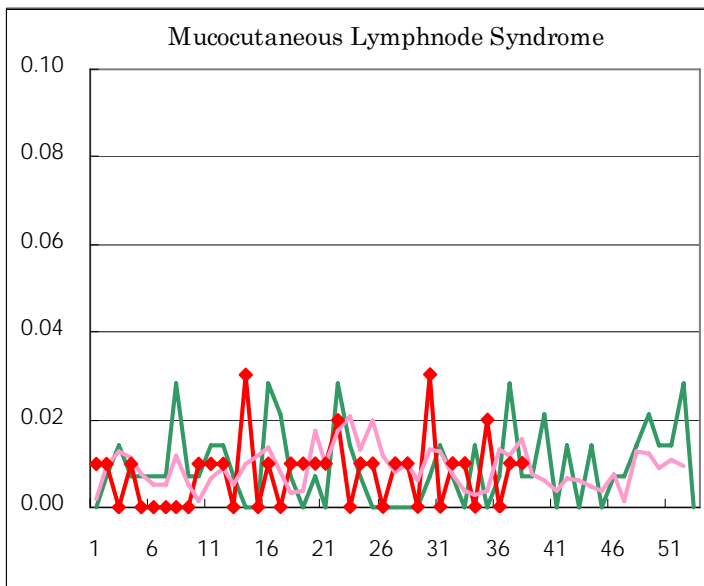
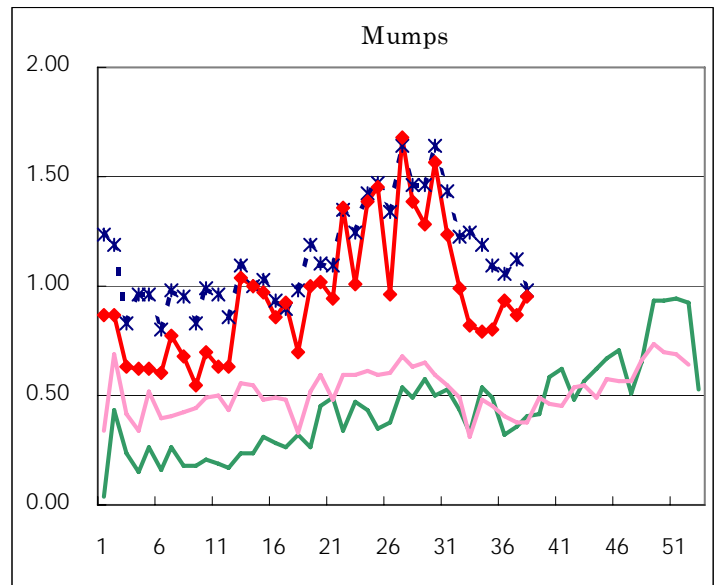
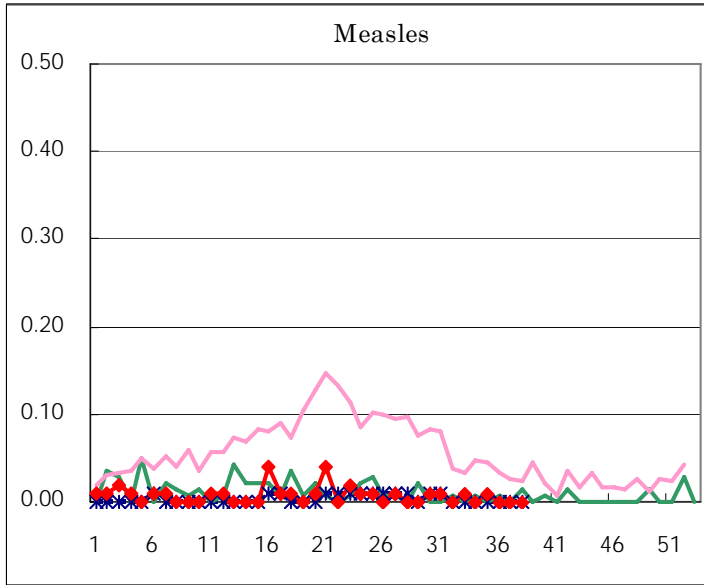
Diseases	Sex	2005				Total
		35th	36th	37th	38th	
Respiratory syncytial virus infection	M	2	1	1	3	7
	F	1	2	2	2	7
Influenza	M			3		3
	F					
Pharyngoconjunctival fever	M	32	35	31	30	128
	F	28	27	27	23	105
Group A streptococcal pharyngitis	M	30	29	47	46	152
	F	27	21	31	31	110
Infectious gastroenteritis	M	181	183	202	190	756
	F	156	169	177	142	644
Chickenpox	M	21	19	19	29	88
	F	24	31	25	17	97
Hand, foot, and mouth disease	M	38	30	32	25	125
	F	31	17	24	18	90
Erythema infectiosum	M	13	20	12	5	50
	F	24	16	15	8	63
Exanthem subitum	M	52	47	59	45	203
	F	57	42	59	40	198
Pertussis	M	1		1	2	4
	F	1		1	1	3
Rubella	M				1	1
	F		1	2		3
Herpangina	M	62	53	38	39	192
	F	48	37	55	32	172
Measles	M	1				1
	F					
Mumps	M	67	75	62	72	276
	F	46	57	62	63	228
Cold with exanthems by Enterovirus	M	8	14	3	4	29
	F	4	4	4	4	16
Mucocutaneous Lymphnode Syndrome	M	2				2
	F	1		1	2	4
Acute hemorrhagic conjunctivitis	M					
	F					
Epidemic keratoconjunctivitis	M	8	8	2	5	23
	F	5	2	5	5	17
Bacterial meningitis	M					
	F	1				1
Aseptic meningitis	M			1		1
	F					
Mycoplasma pneumonia	M	1			2	3
	F	2	1	1		4
Chlamydial pneumonia (excluding psittacosis)	M					
	F				2	2
Measles in adults	M					
	F					

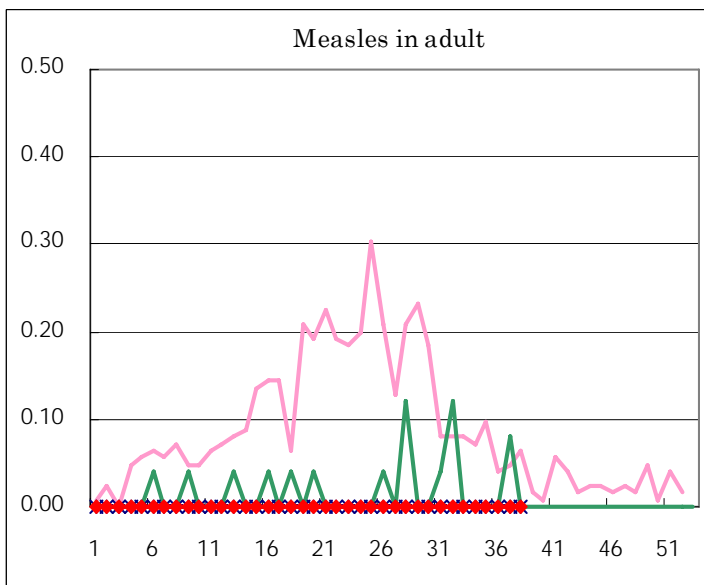
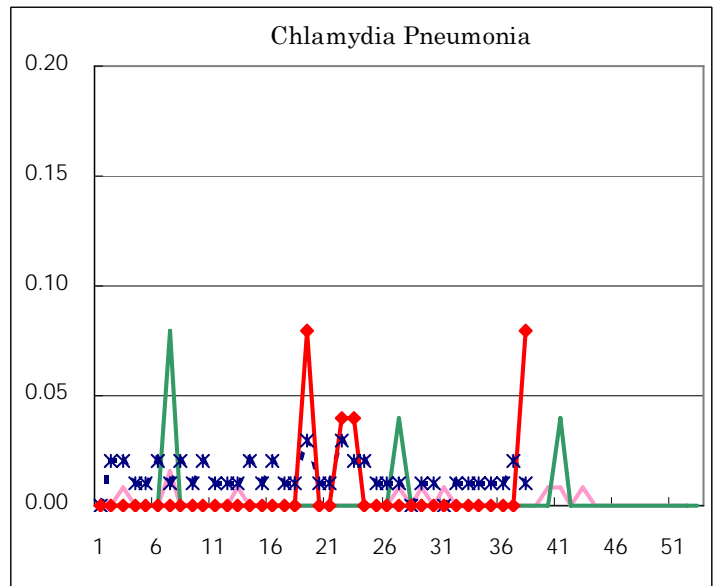
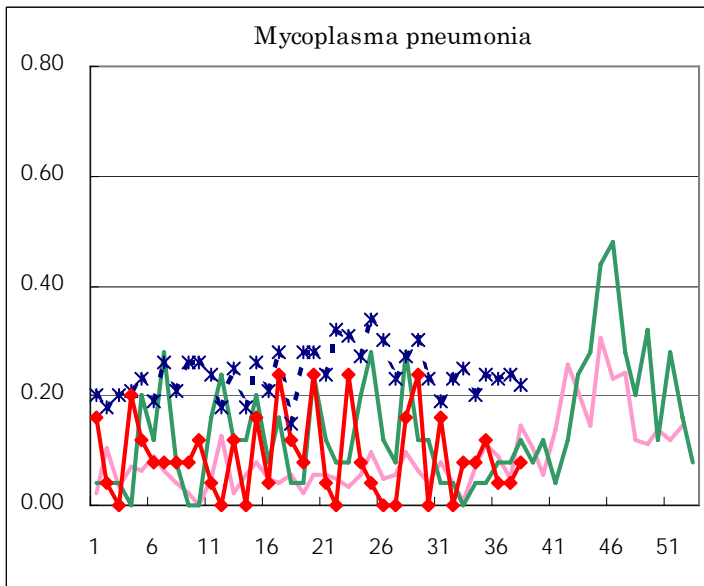
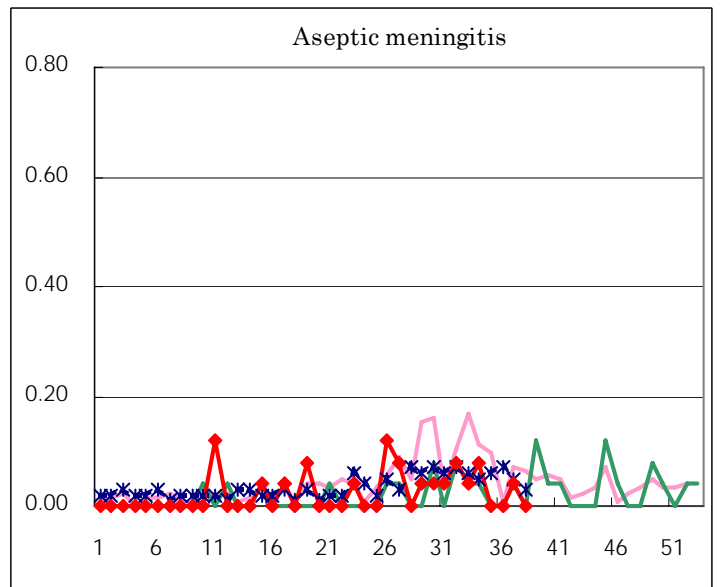
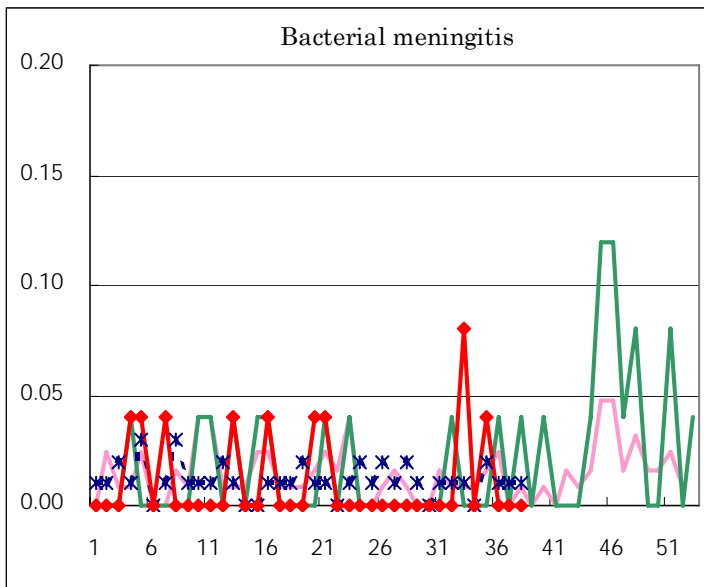
( Blank means 0. )

# Disease Trend Graph (weekly reported cases per fixed-point in comparison)









Tokyo Metropolitan Government  
**Infectious Disease Surveillance Center**