

INFECTIOUS DISEASES WEEKLY REPORT

TOKYO IDWR

Tokyo Metropolitan Institute of Public Health

11 October 2005 / Number 39

- Number of patients with the diseases required notifying all the cases
- Number of patients with the diseases to be reported by the sentinel clinics and hospitals
- Disease trend graph (weekly reported cases per sentinel in comparison)

Surveillance System in Tokyo, Japan

The infectious diseases which all physicians must report

All physicians must report to health centers the incidence of the diseases which are shown at page one. Health centers electronically report the individual cases to Tokyo Metropolitan Infectious Disease Surveillance Center.

The infectious diseases required to be reported by the sentinels

The numbers of patients who visit the sentinel clinics or hospitals during a week are reported to health centers in Tokyo. And they electronically report the numbers to Tokyo Metropolitan Infectious Disease Surveillance Center. We have about 260 sentinel clinics and hospitals in Tokyo.

1st Week is early January and 52rd Week is end of December.

Tokyo Metropolitan Infectious Disease Surveillance Center
Tokyo Metropolitan Institute of Public Health

TEL:81-3-3363-3213 FAX:81-3-5332-7365
e-mail:idsc@tokyo-eiken.go.jp
URL:idsc.tokyo-eiken.go.jp/

Number of patients with the diseases which all physicians must report

Category	Diseases	Tokyo				Japan		
		36th	37th	38th	39th	Total	39th	Total
I	Ebola hemorrhagic fever							
	Crimean-Congo hemorrhagic fever							
	Severe acute respiratory syndrome							
	Smallpox							
	Plague							
	Marburg disease							
	Lassa fever							
II	Acute poliomyelitis							
	Cholera				1	6	7	40
	Shigellosis	1	6	1	4	71	22	445
	Diphtheria							
	Typhoid fever		1		2	9	1	39
	Paratyphoid fever					3	1	12
III	Enterohemorrhagic <i>Escherichia coli</i> infection	20	12	1	11	204	83	2821
IV	Hepatitis E		1			7	(1)	(34)
	West Nile fever							
	Hepatitis A			4		17	(5)	(141)
	Echinococcosis					1		14
	Yellow fever							
	Psittacosis					2		26
	Relapsing fever							
	Q fever					3		8
	Rabies							
	High pathogenic avian influenza							
	Coccidioidomycosis							2
	Monkeypox							
	Hemorrhagic fever with renal syndrome							
	Anthrax							
	Scrub typhus (Tsutsugamushi disease)					3	1	106
	Dengue fever	3	5	1	1	21	1	54
	Nipah virus infection							
	Japanese spotted fever							46
	Japanese encephalitis							1
	Hantavirus pulmonary syndrome							
	B virus disease							
Brucellosis					1		1	
Epidemic typhus								
Botulism					1			
Malaria				1	13	2	50	
Tularemia								
Lyme disease	1				4		6	
Lyssavirus infection								
Legionellosis	1				15	6	181	
Leptospirosis					1		(5)	
V	Amebiasis	5	2	1	6	140	12	520
	Acute viral hepatitis(excluding Hepatitis A,Hepatitis E)				2	31	3	214
	Acute encephalitis					13	(3)	(146)
	Cryptosporidiosis					1		6
	Creutzfeldt-Jakob Disease			1	2	14	2	115
	Sever invasive streptococcal infections					2	1	46
	Acquired immunodeficiency syndrome	8	5	2	11	325	8	871
	Giardiasis				1	9	1	53
	Meningococcal meningitis					3	1	10
	Congenital rubella syndrome							
	Syphilis	2	1	1	1	56	5	400
	Tetanus					1	1	77
	Vancomycin-resistant <i>Staphylococcus aureus</i> infection							
	Vancomycin-resistant <i>enterococcus</i> infection	1			1	11	1	55

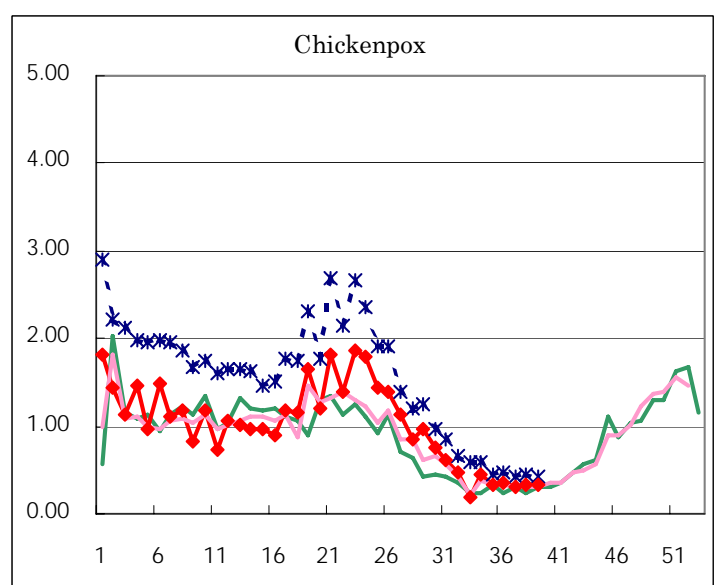
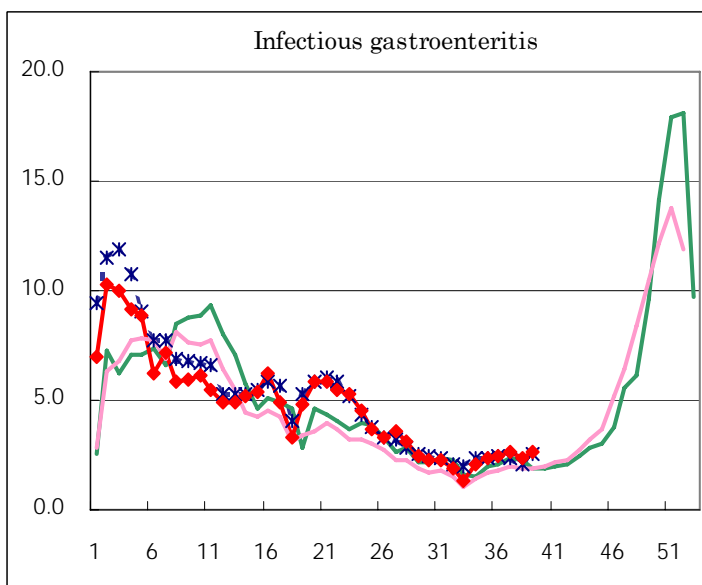
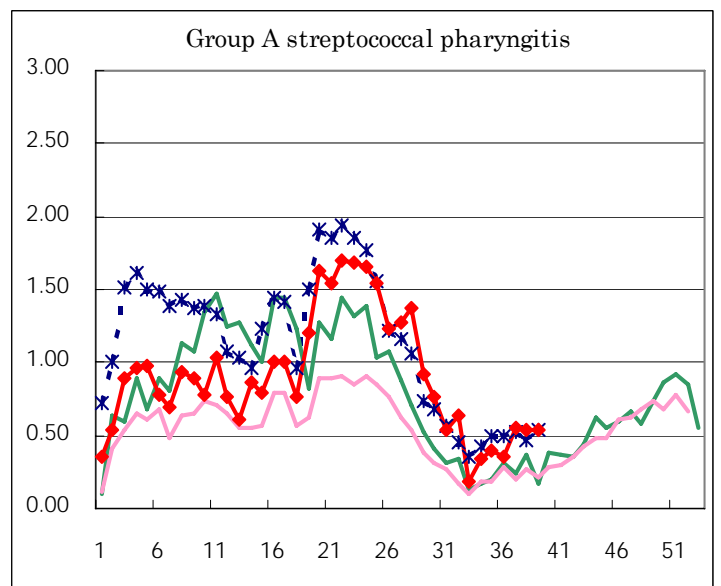
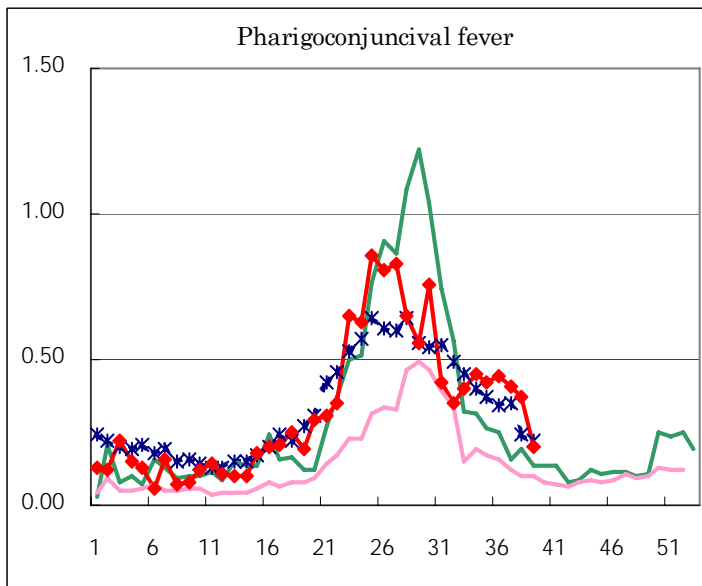
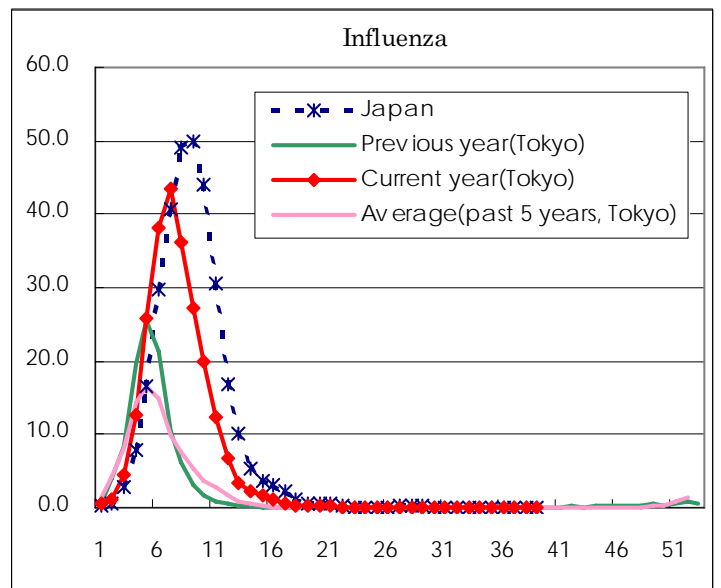
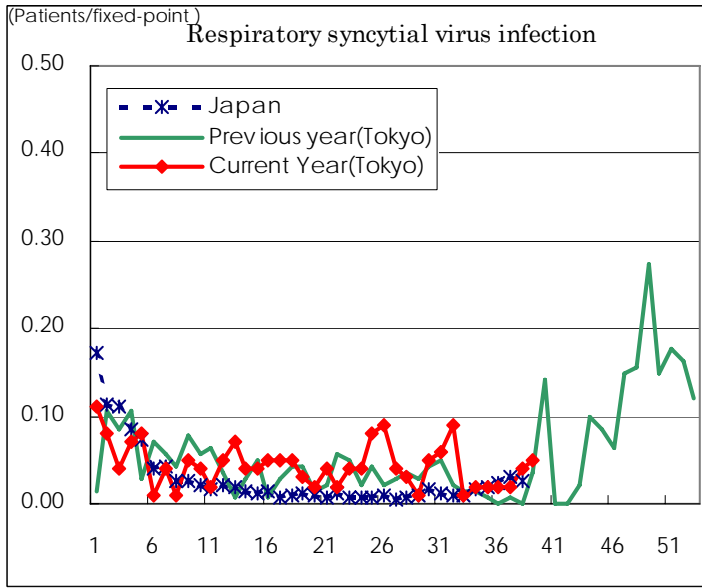
(Blank means 0.)

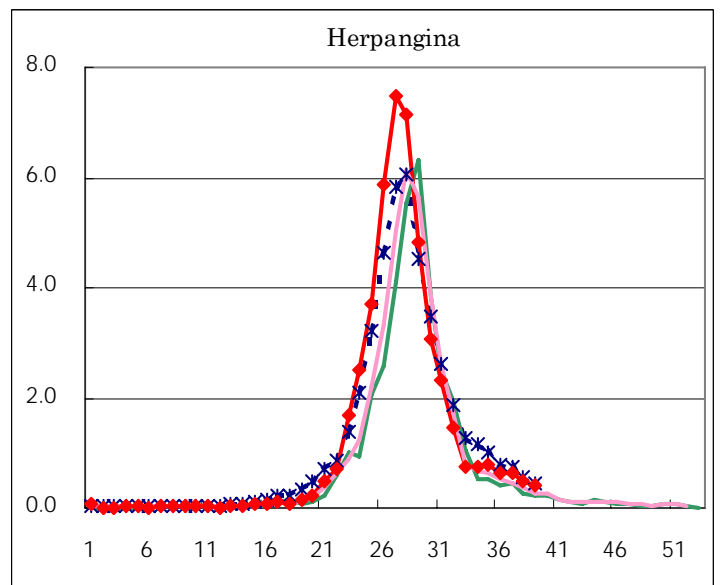
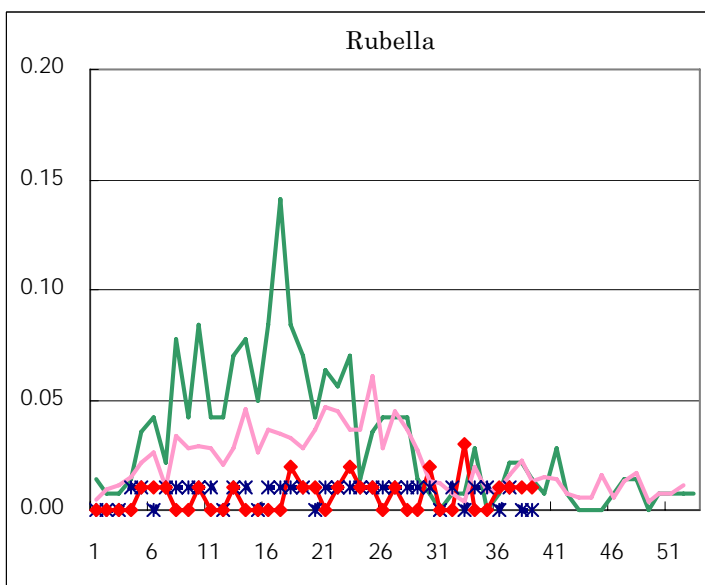
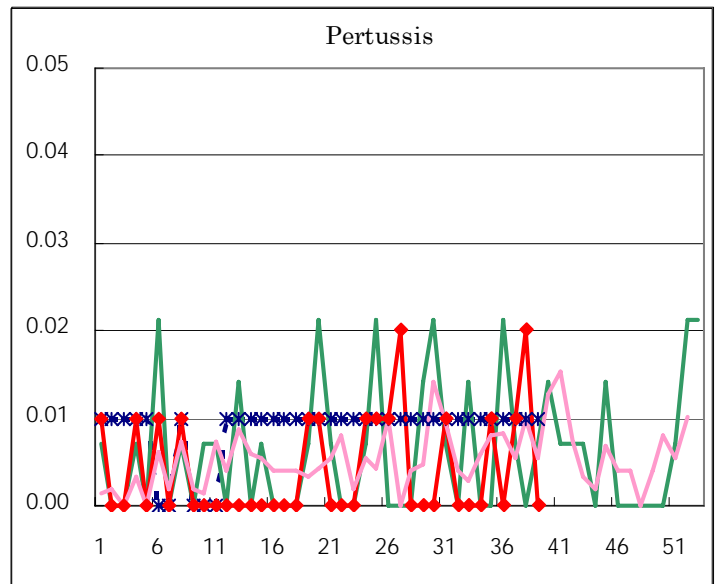
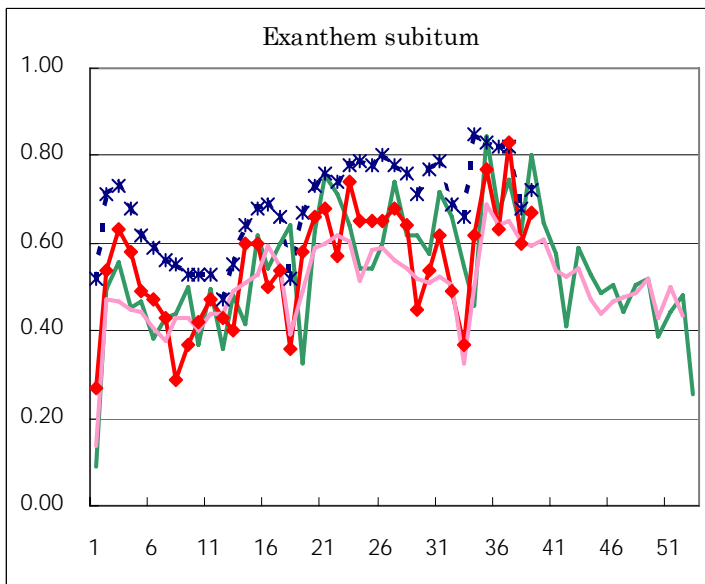
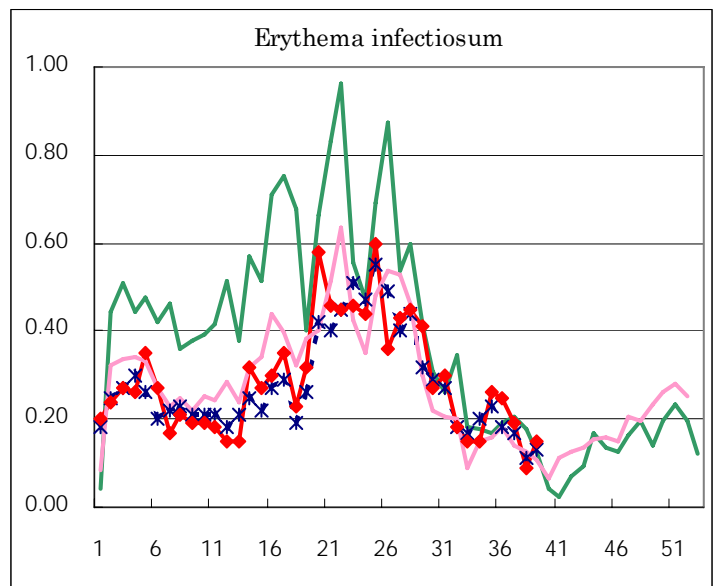
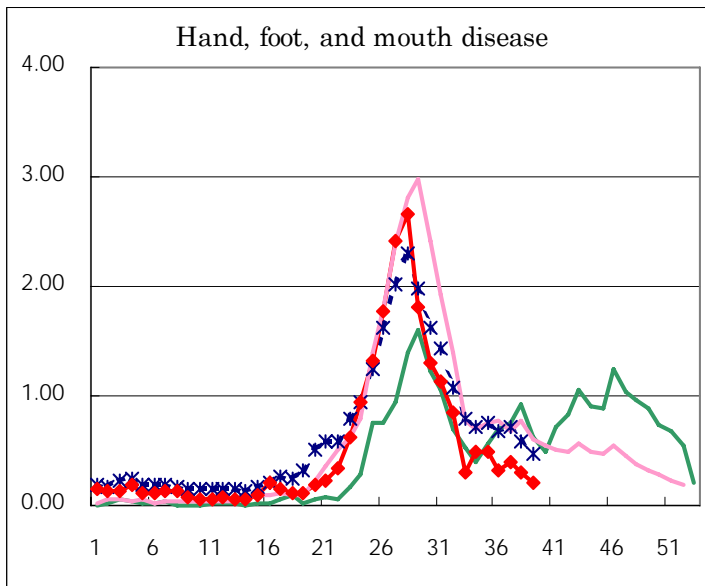
Number of patients with the diseases to be reported
by the designated clinics and hospitals

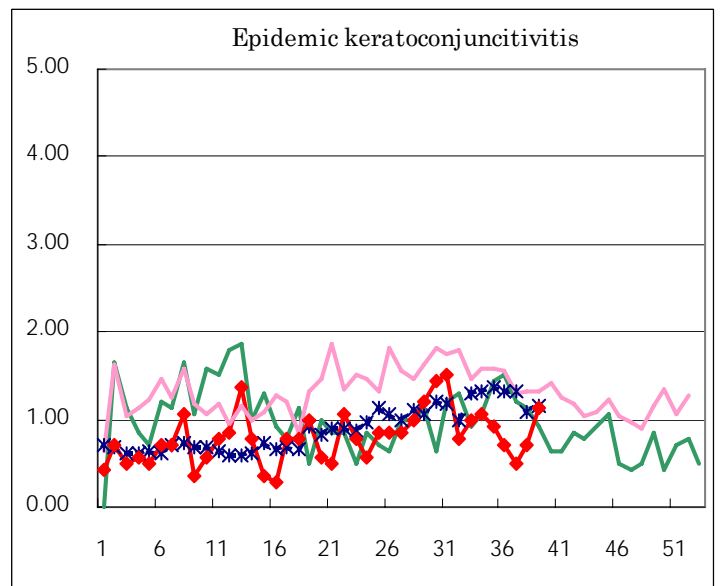
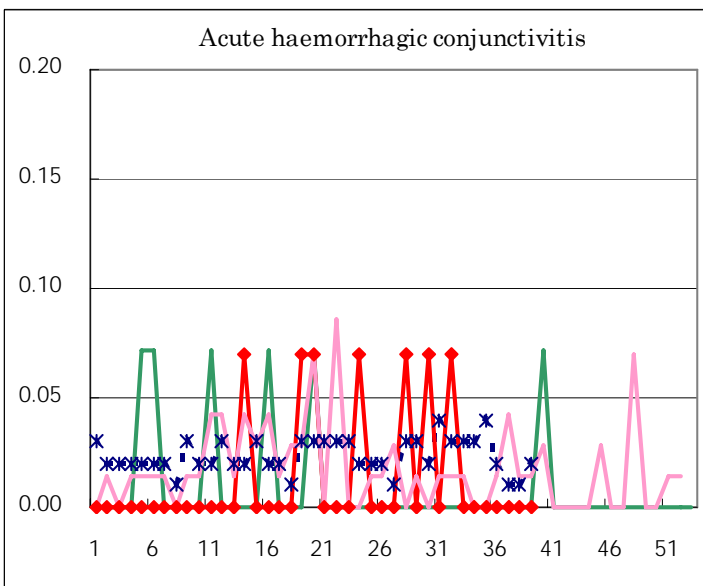
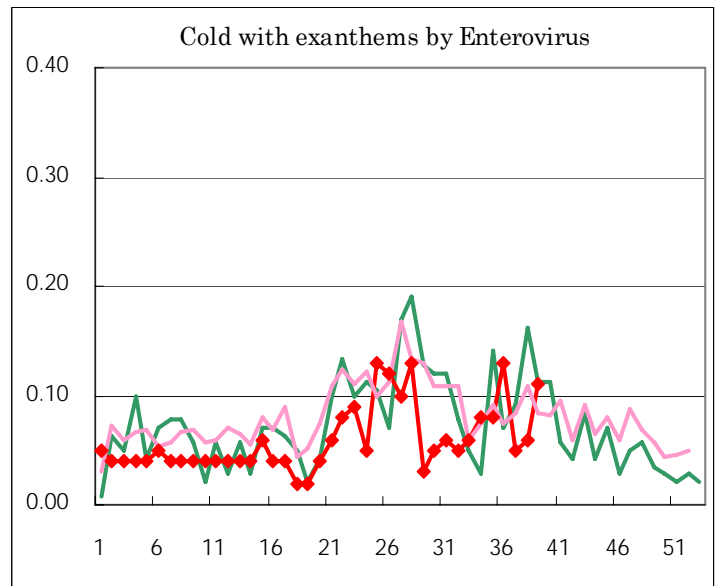
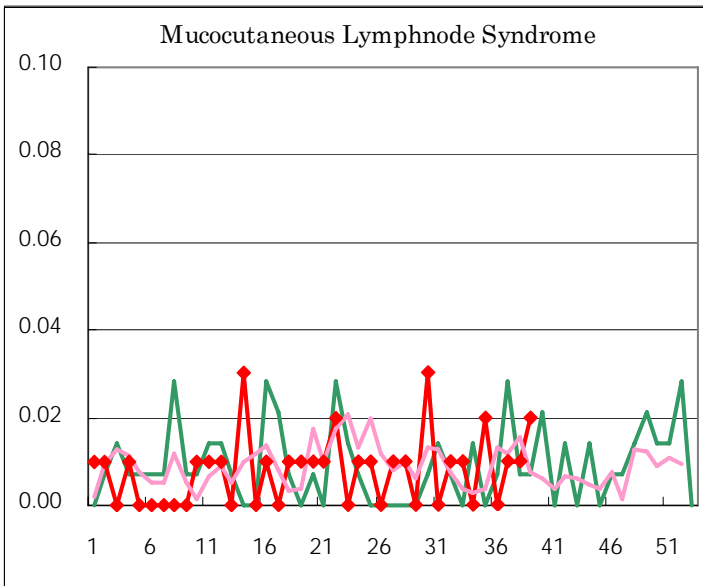
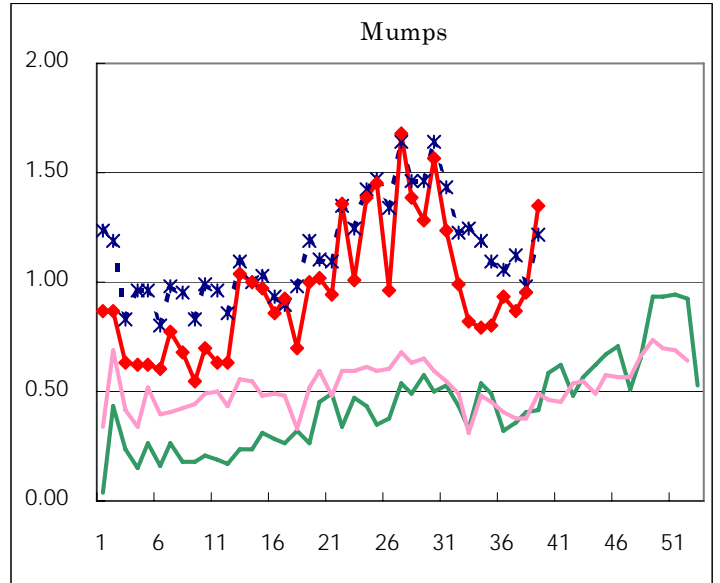
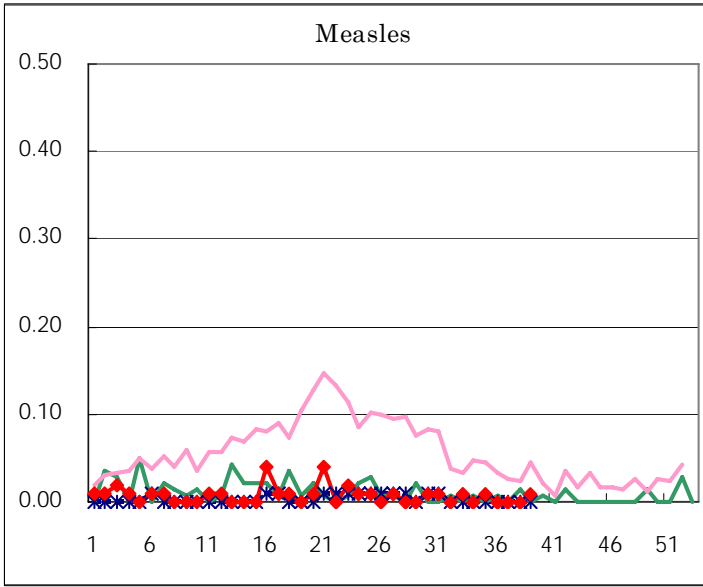
Diseases	Sex	2005				Total
		36th	37th	38th	39th	
Respiratory syncytial virus infection	M	1	1	3	4	9
	F	2	2	2	3	9
Influenza	M		3			3
	F					
Pharyngoconjunctival fever	M	35	31	30	17	113
	F	27	27	23	11	88
Group A streptococcal pharyngitis	M	29	47	46	34	156
	F	21	31	31	42	125
Infectious gastroenteritis	M	183	202	190	207	782
	F	169	177	142	163	651
Chickenpox	M	19	19	29	30	97
	F	31	25	17	18	91
Hand, foot, and mouth disease	M	30	32	25	19	106
	F	17	24	18	9	68
Erythema infectiosum	M	20	12	5	12	49
	F	16	15	8	10	49
Exanthem subitum	M	47	59	45	49	200
	F	42	59	40	46	187
Pertussis	M		1	2		3
	F		1	1		2
Rubella	M			1	1	2
	F	1	2		1	4
Herpangina	M	53	38	39	39	169
	F	37	55	32	21	145
Measles	M					
	F				2	2
Mumps	M	75	62	72	117	326
	F	57	62	63	74	256
Cold with exanthems by Enterovirus	M	14	3	4	10	31
	F	4	4	4	5	17
Mucocutaneous Lymphnode Syndrome	M				1	1
	F		1	2	2	5
Acute hemorrhagic conjunctivitis	M					
	F					
Epidemic keratoconjunctivitis	M	8	2	5	9	24
	F	2	5	5	7	19
Bacterial meningitis	M					
	F					
Aseptic meningitis	M		1			1
	F					
Mycoplasma pneumonia	M			2	1	3
	F	1	1		1	3
Chlamydial pneumonia (excluding psittacosis)	M					
	F			2		2
Measles in adults	M					
	F				1	1

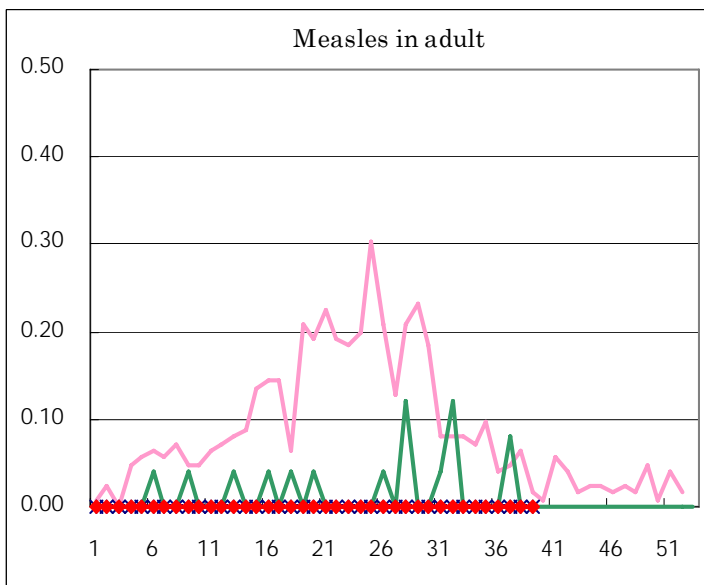
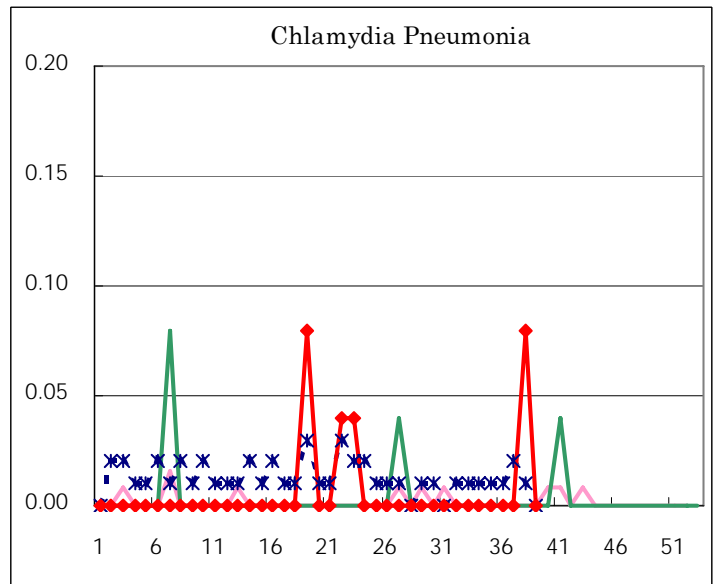
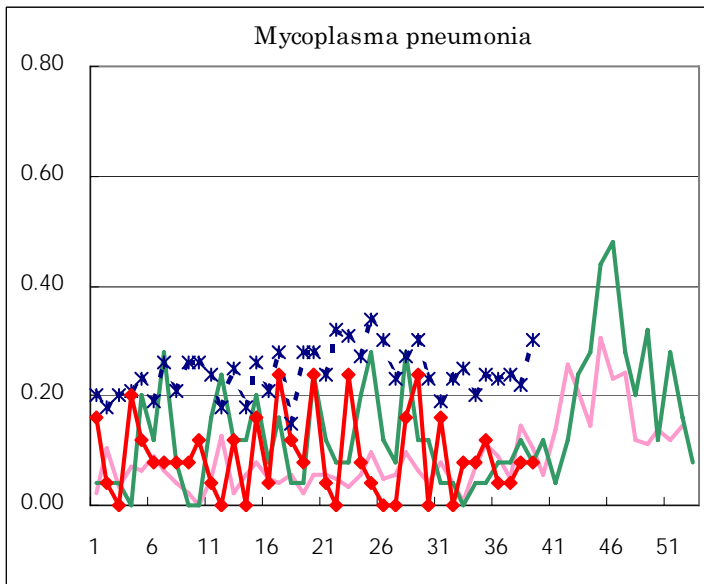
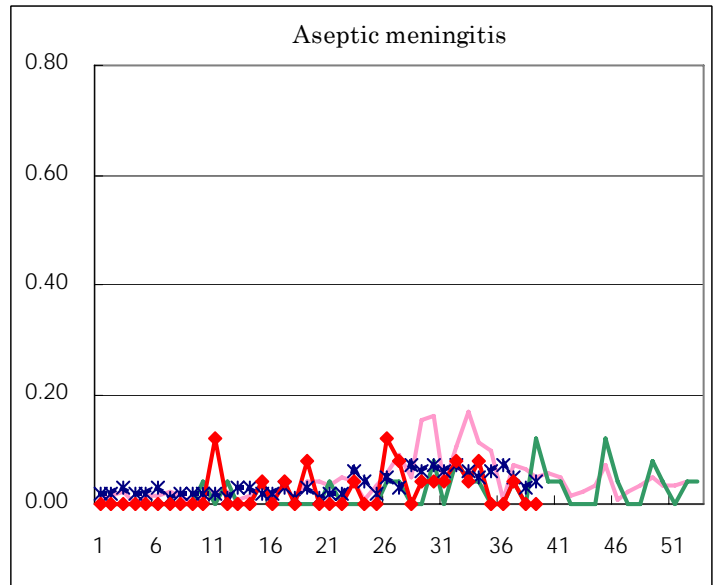
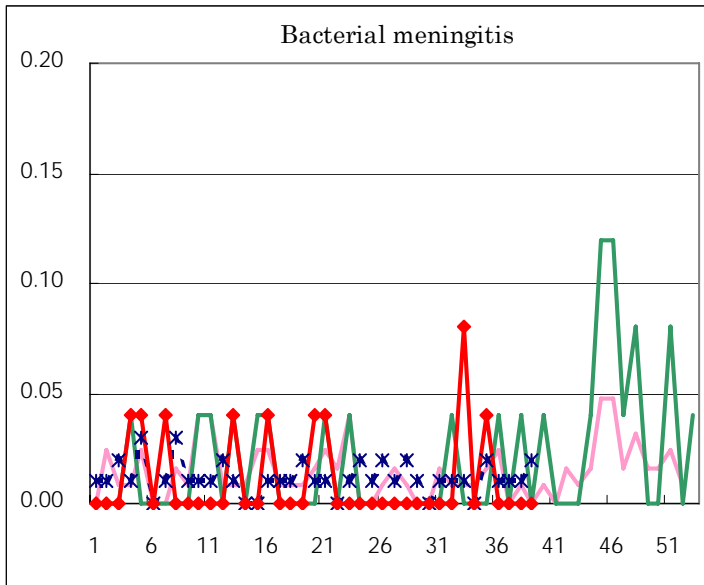
(Blank means 0.)

Disease Trend Graph (weekly reported cases per fixed-point in comparison)









Tokyo Metropolitan Government
Infectious Disease Surveillance Center