

INFECTIOUS DISEASES WEEKLY REPORT

TOKYO IDWR

Tokyo Metropolitan Institute of Public Health

1 November 2005 / Number 42

- Number of patients with the diseases required notifying all the cases
- Number of patients with the diseases to be reported by the sentinel clinics and hospitals
- Disease trend graph (weekly reported cases per sentinel in comparison)

Surveillance System in Tokyo, Japan

The infectious diseases which all physicians must report

All physicians must report to health centers the incidence of the diseases which are shown at page one. Health centers electronically report the individual cases to Tokyo Metropolitan Infectious Disease Surveillance Center.

The infectious diseases required to be reported by the sentinels

The numbers of patients who visit the sentinel clinics or hospitals during a week are reported to health centers in Tokyo. And they electronically report the numbers to Tokyo Metropolitan Infectious Disease Surveillance Center. We have about 260 sentinel clinics and hospitals in Tokyo.

1st Week is early January and 52rd Week is end of December.

Tokyo Metropolitan Infectious Disease Surveillance Center
Tokyo Metropolitan Institute of Public Health

TEL:81-3-3363-3213 FAX:81-3-5332-7365
e-mail:idsc@tokyo-eiken.go.jp
URL:idsc.tokyo-eiken.go.jp/

Number of patients with the diseases which all physicians must report

Category	Diseases	Tokyo					Japan	
		39th	40th	41st	42nd	Total	42nd	Total
I	Ebola hemorrhagic fever							
	Crimean-Congo hemorrhagic fever							
	Severe acute respiratory syndrome							
	Smallpox							
	Plague							
	Marburg disease							
	Lassa fever							
II	Acute poliomyelitis							
	Cholera	1		3		9		45
	Shigellosis	4	5	1	2	79	14	492
	Diphtheria							
	Typhoid fever	2		1	1	11	2	45
	Paratyphoid fever				1	4	1	13
III	Enterohemorrhagic <i>Escherichia coli</i> infection	11	15	5	2	226	78	3107
IV	Hepatitis E					7	(1)	(35)
	West Nile fever							
	Hepatitis A		1	1		19	(1)	(149)
	Echinococcosis					1		14
	Yellow fever							
	Psittacosis					2	1	28
	Relapsing fever							
	Q fever					3		8
	Rabies							
	High pathogenic avian influenza							
	Coccidioidomycosis							3
	Monkeypox							
	Hemorrhagic fever with renal syndrome							
	Anthrax							
	Scrub typhus (Tsumugamushi disease)					3	3	111
	Dengue fever	1			1	22	2	60
	Nipah virus infection							
	Japanese spotted fever						1	53
	Japanese encephalitis							1
	Hantavirus pulmonary syndrome							
	B virus disease							
	Brucellosis					1		1
	Epidemic typhus							
Botulism					1	0	2	
Malaria	1	1		2	16	2	56	
Tularemia								
Lyme disease					4		7	
Lyssavirus infection								
Legionellosis			1	1	17	9	205	
Leptospirosis					1		(8)	
V	Amebiasis	6	9	2	4	155	9	567
	Acute viral hepatitis(excluding Hepatitis A,Hepatitis E)	2		1		32	3	232
	Acute encephalitis		1			14	(1)	(157)
	Cryptosporidiosis					1		7
	Creutzfeldt-Jakob Disease	2				14	2	125
	Sever invasive streptococcal infections					2		47
	Acquired immunodeficiency syndrome	11	6	7	10	348	9	940
	Giardiasis	1				9		57
	Meningococcal meningitis					3		10
	Congenital rubella syndrome							1
	Syphilis	1	4	3	2	65	4	426
	Tetanus					1	1	84
	Vancomycin-resistant <i>Staphylococcus aureus</i> infection							
	Vancomycin-resistant <i>enterococcus</i> infection	1				11	1	56

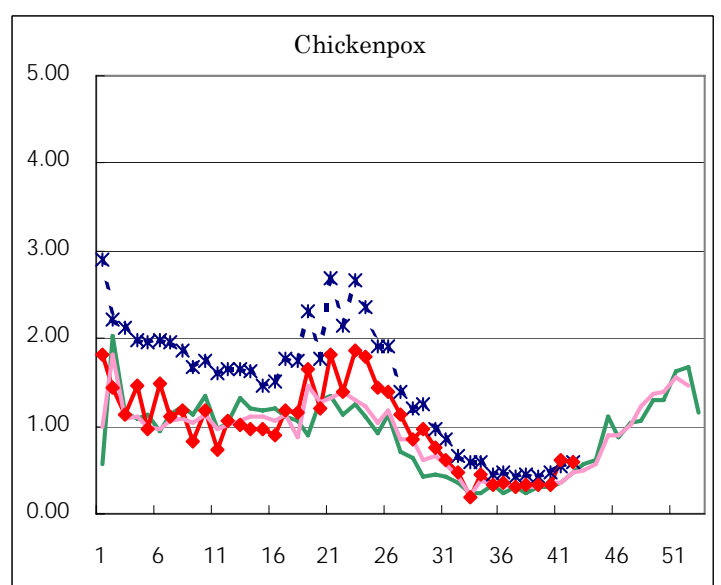
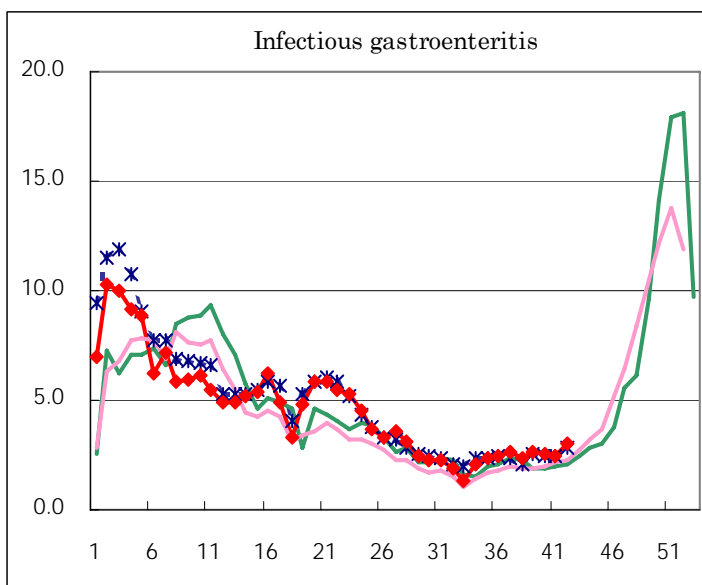
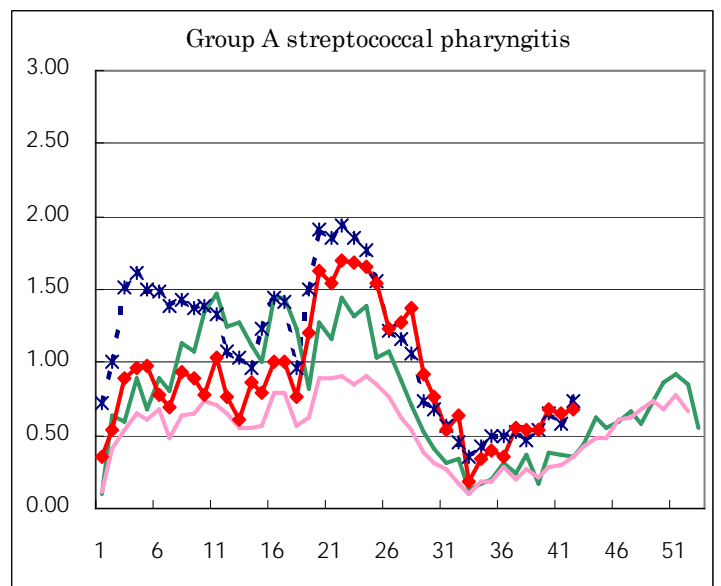
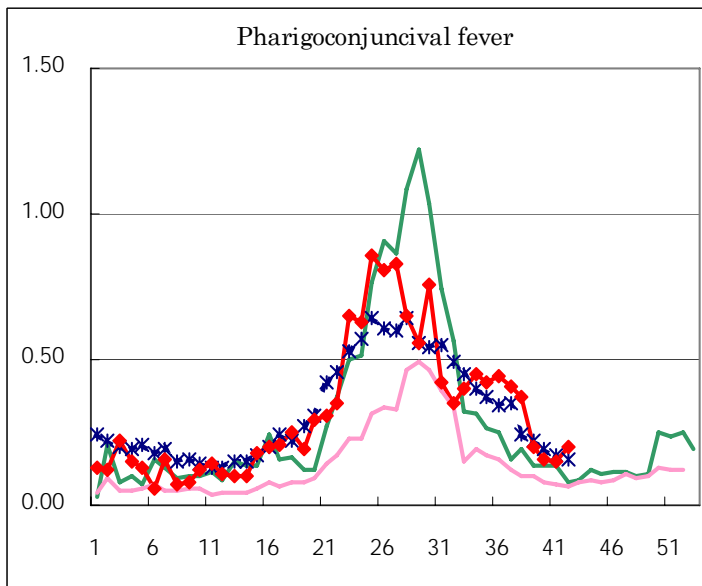
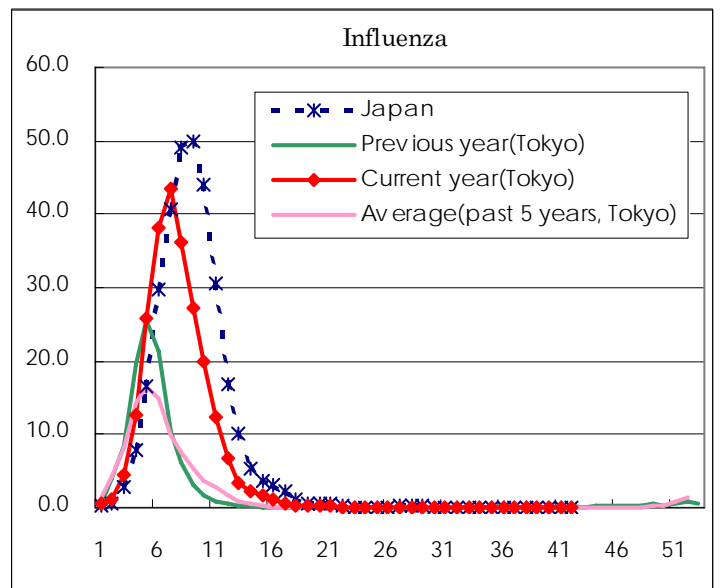
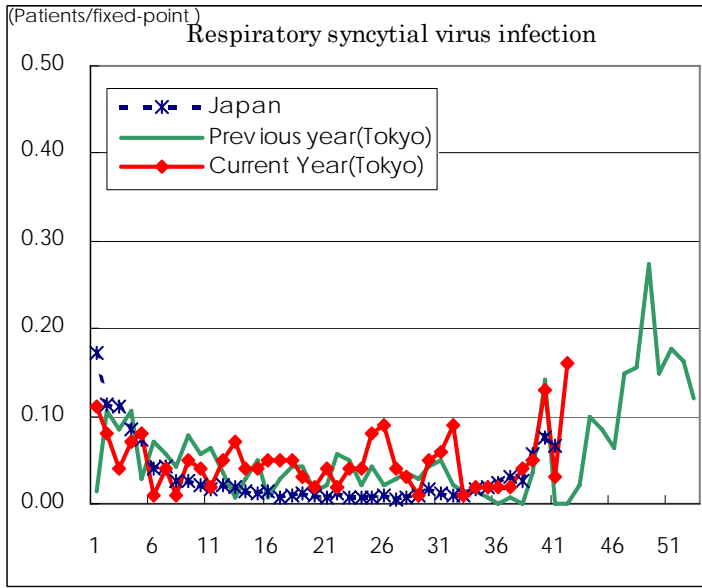
(Blank means 0.)

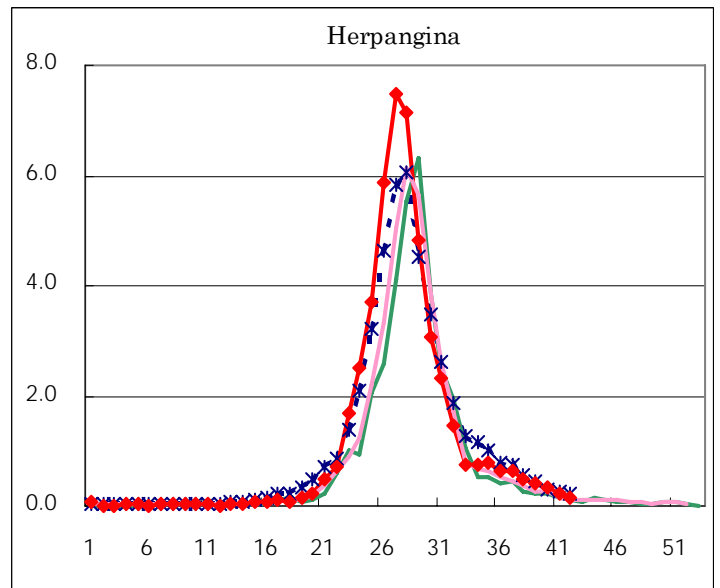
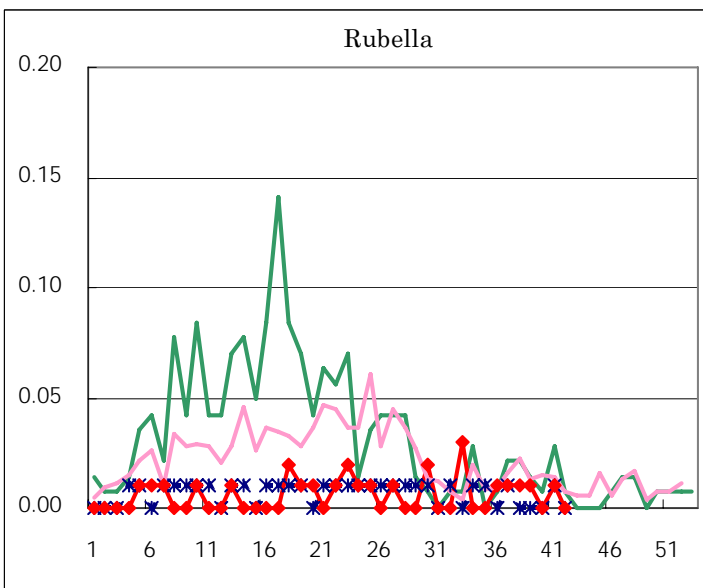
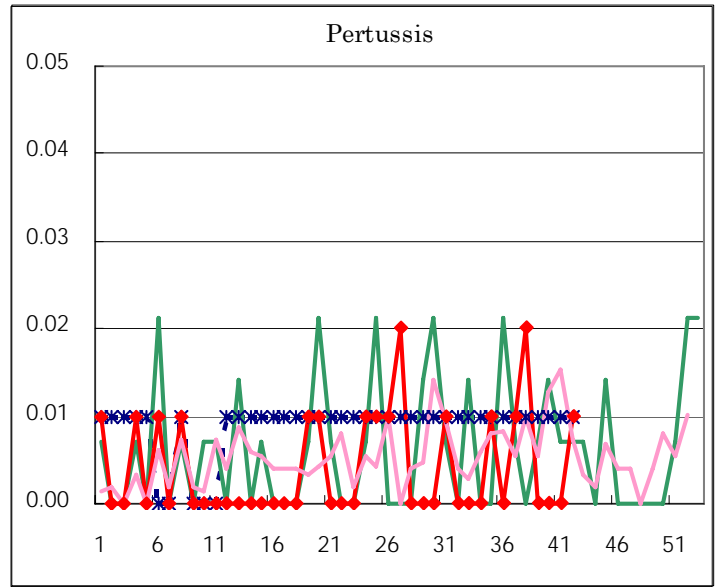
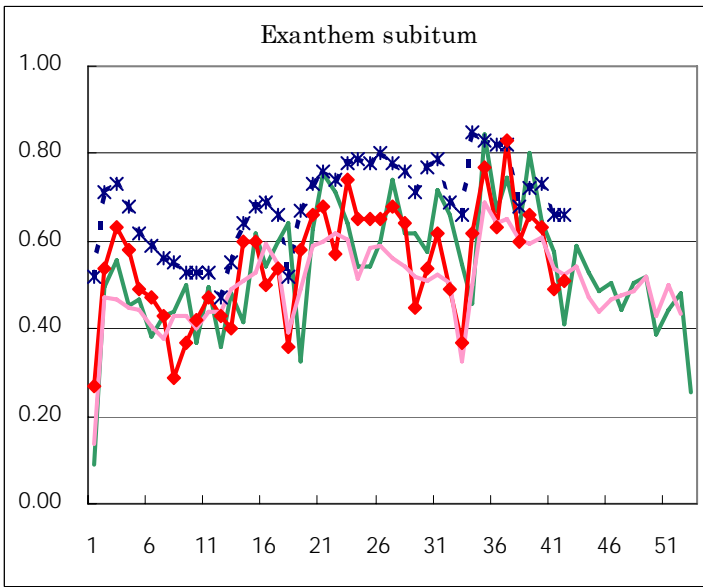
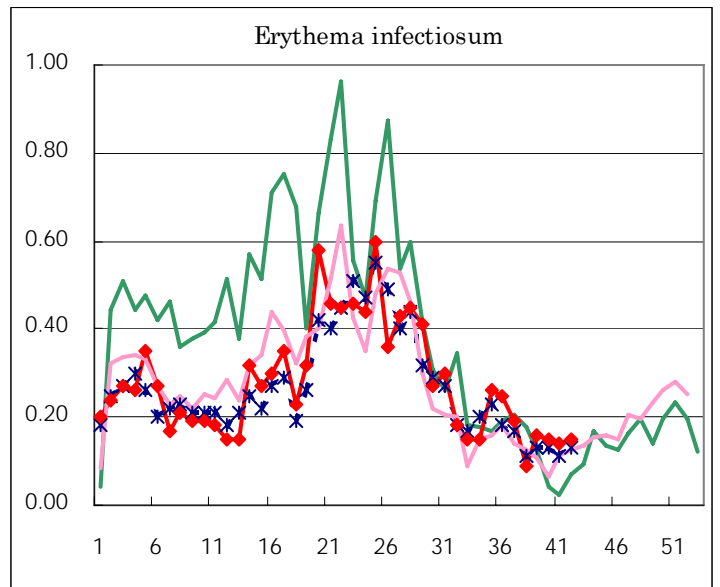
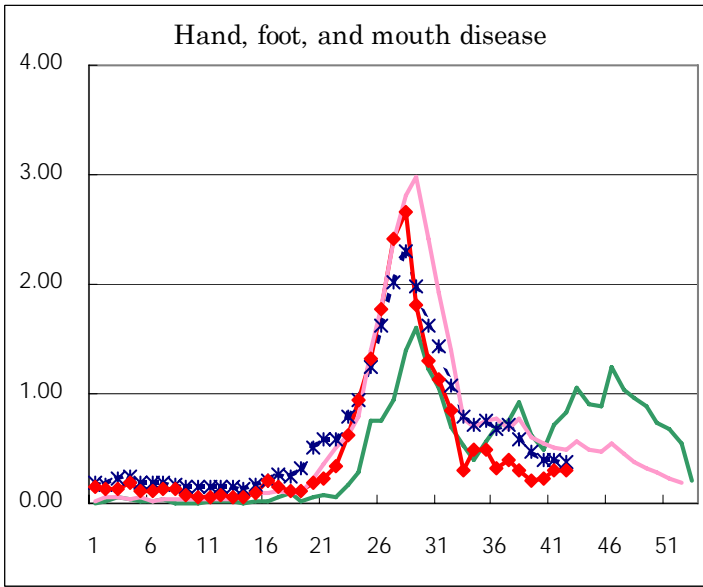
Number of patients with the diseases to be reported
by the designated clinics and hospitals

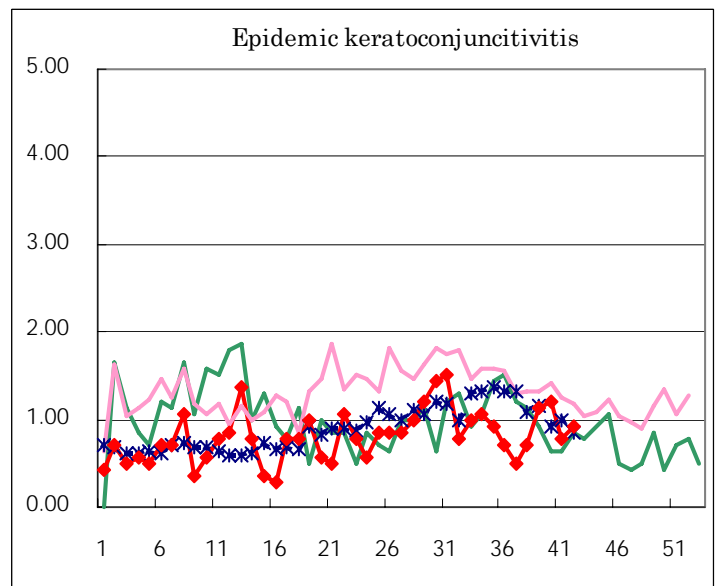
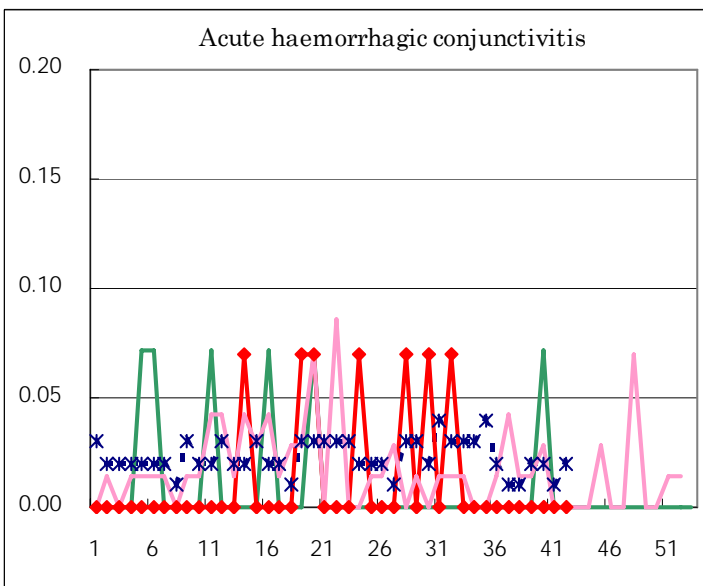
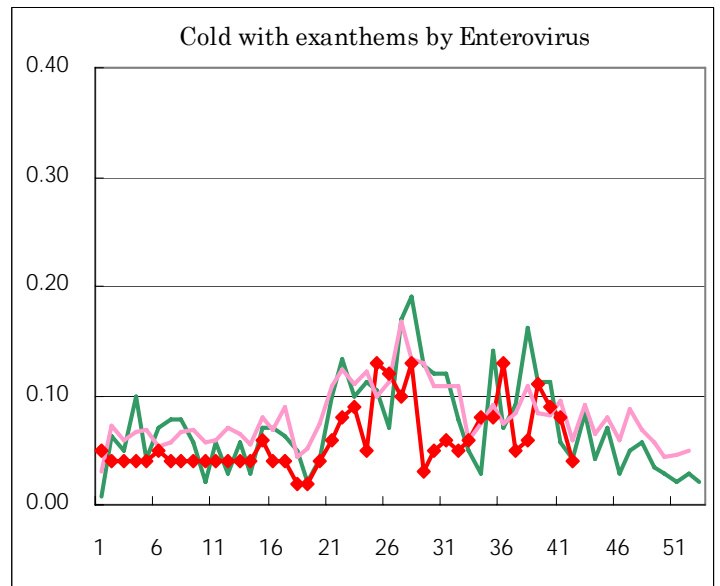
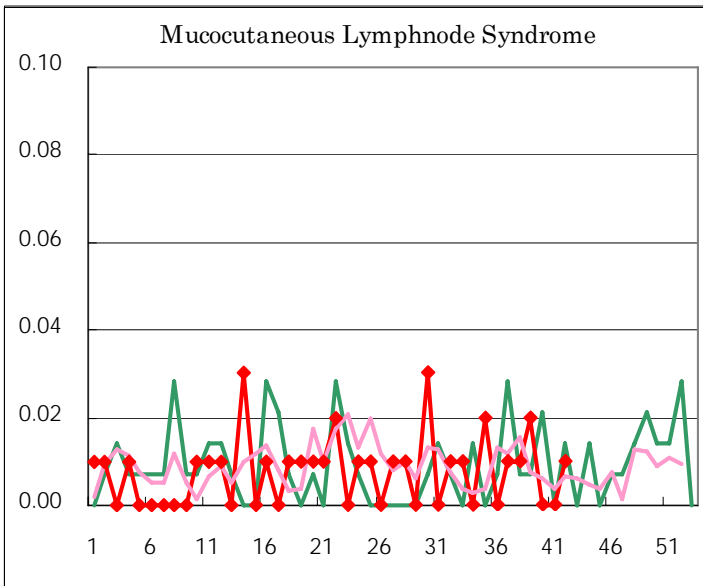
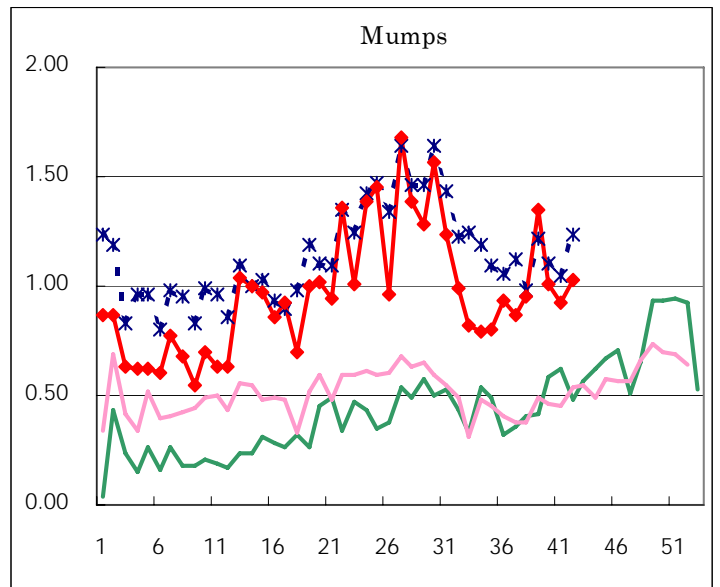
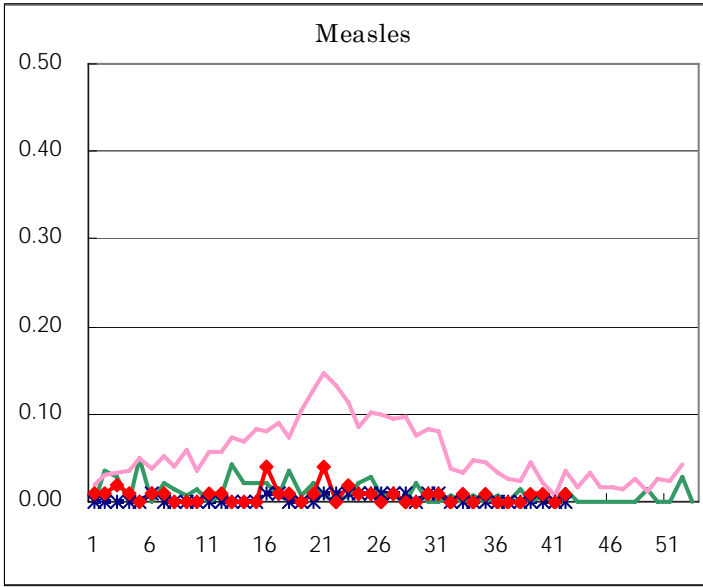
Diseases	Sex	2005				Total
		39th	40th	41st	42nd	
Respiratory syncytial virus infection	M	4	10	3	15	32
	F	3	9	1	8	21
Influenza	M		5			5
	F		2	1	2	5
Pharyngoconjunctival fever	M	17	15	13	14	59
	F	11	8	8	15	42
Group A streptococcal pharyngitis	M	34	53	45	58	190
	F	42	43	47	38	170
Infectious gastroenteritis	M	207	200	179	231	817
	F	163	167	171	203	704
Chickenpox	M	30	17	48	47	142
	F	18	29	38	35	120
Hand, foot, and mouth disease	M	19	21	20	22	82
	F	9	12	23	20	64
Erythema infectiosum	M	12	9	15	12	48
	F	11	12	5	10	38
Exanthem subitum	M	49	50	32	41	172
	F	45	40	37	32	154
Pertussis	M					
	F				1	1
Rubella	M	1		1		2
	F	1				1
Herpangina	M	39	27	15	9	90
	F	21	22	17	14	74
Measles	M				2	2
	F	2	1			3
Mumps	M	117	81	64	86	348
	F	74	64	66	60	264
Cold with exanthems by Enterovirus	M	10	7	5	4	26
	F	5	6	6	2	19
Mucocutaneous Lymphnode Syndrome	M	1			2	3
	F	2				2
Acute hemorrhagic conjunctivitis	M					
	F					
Epidemic keratoconjunctivitis	M	9	8	5	7	29
	F	7	9	6	6	28
Bacterial meningitis	M					
	F					
Aseptic meningitis	M			1		1
	F			1		1
Mycoplasma pneumonia	M	1	5	2	6	14
	F	1	1	4	5	11
Chlamydial pneumonia (excluding psittacosis)	M					
	F					
Measles in adults	M					
	F	1				1

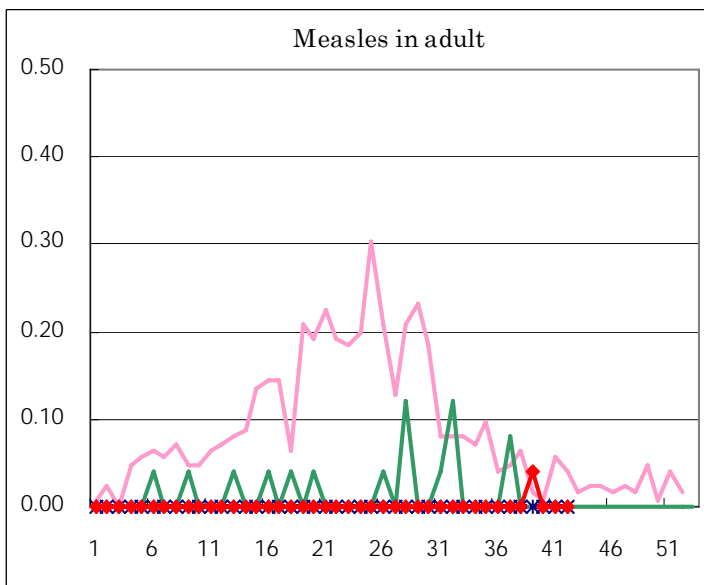
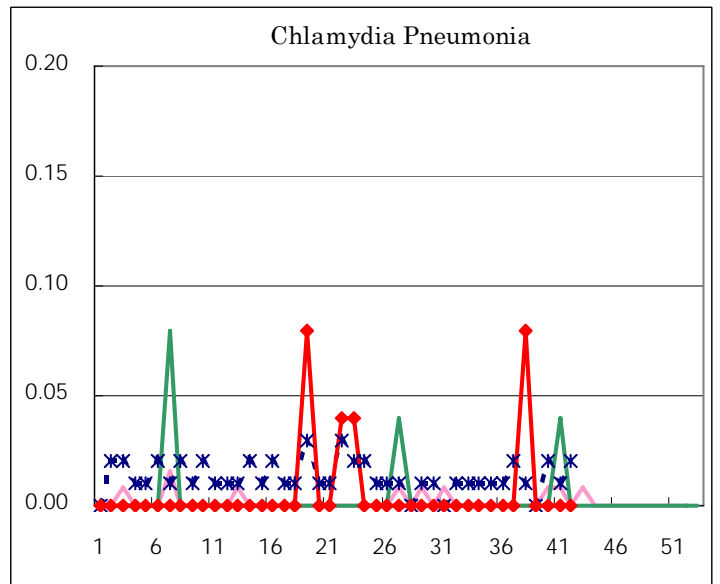
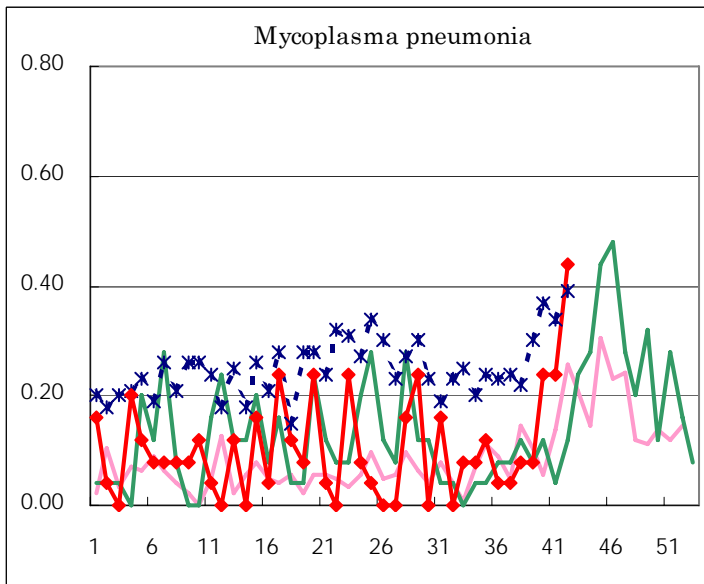
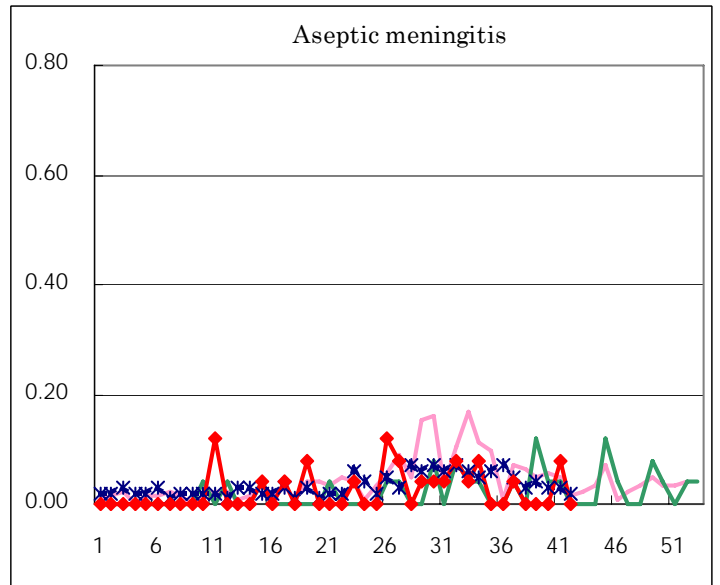
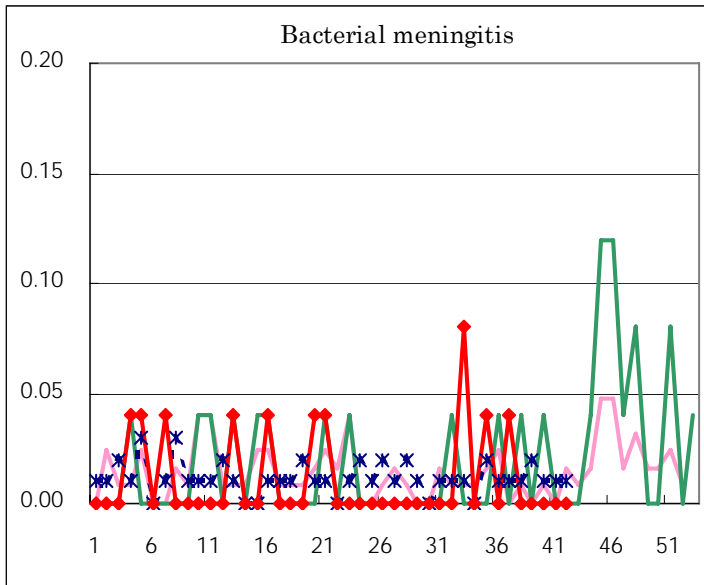
(Blank means 0.)

Disease Trend Graph (weekly reported cases per fixed-point in comparison)









Tokyo Metropolitan Government
Infectious Disease Surveillance Center