

INFECTIOUS DISEASES WEEKLY REPORT

# TOKYO IDWR

Tokyo Metropolitan Institute of Public Health

13 December 2005 / Number 48

- Number of patients with the diseases required notifying all the cases
- Number of patients with the diseases to be reported by the sentinel clinics and hospitals
- Disease trend graph (weekly reported cases per sentinel in comparison)

## Surveillance System in Tokyo, Japan

### The infectious diseases which all physicians must report

All physicians must report to health centers the incidence of the diseases which are shown at page one. Health centers electronically report the individual cases to Tokyo Metropolitan Infectious Disease Surveillance Center.

### The infectious diseases required to be reported by the sentinels

The numbers of patients who visit the sentinel clinics or hospitals during a week are reported to health centers in Tokyo. And they electronically report the numbers to Tokyo Metropolitan Infectious Disease Surveillance Center. We have about 260 sentinel clinics and hospitals in Tokyo.

1<sup>st</sup> Week is early January and 52<sup>nd</sup> Week is end of December.

Tokyo Metropolitan Infectious Disease Surveillance Center  
Tokyo Metropolitan Institute of Public Health

TEL:81-3-3363-3213 FAX:81-3-5332-7365  
e-mail:[idsc@tokyo-eiken.go.jp](mailto:idsc@tokyo-eiken.go.jp)  
URL:[idsc.tokyo-eiken.go.jp/](http://idsc.tokyo-eiken.go.jp/)

## Number of patients with the diseases which all physicians must report

Category	Diseases	Tokyo				Japan		
		45th	46th	47th	48th	Total	48th	Total
I	Ebola hemorrhagic fever							
	Crimean-Congo hemorrhagic fever							
	Severe acute respiratory syndrome							
	Smallpox							
	Plague							
	Marburg disease							
	Lassa fever							
II	Acute poliomyelitis							
	Cholera				1	11	3	50
	Shigellosis	1	2		3	87	6	532
	Diphtheria							
	Typhoid fever					11	1	49
	Paratyphoid fever					4		18
III	Enterohemorrhagic <i>Escherichia coli</i> infection	1	1	2	1	233	27	3480
IV	Hepatitis E		1			8		(39)
	West Nile fever							1
	Hepatitis A	1		1	2	23	(1)	(160)
	Echinococcosis					1		16
	Yellow fever							
	Psittacosis	1				3		32
	Relapsing fever							
	Q fever					3		8
	Rabies							
	High pathogenic avian influenza							
	Coccidioidomycosis							4
	Monkeypox							
	Hemorrhagic fever with renal syndrome							
	Anthrax							
	Scrub typhus (Tsutsugamushi disease)		1			4	21	223
	Dengue fever	1	2	1	1	29		71
	Nipah virus infection							
	Japanese spotted fever							61
	Japanese encephalitis						1	7
	Hantavirus pulmonary syndrome							
	B virus disease							
	Brucellosis					1		1
	Epidemic typhus							
Botulism					1		3	
Malaria		2			20		64	
Tularemia								
Lyme disease					4		8	
Lyssavirus infection								
Legionellosis		2	1	1	24	6	260	
Leptospirosis		2			3		(14)	
V	Amebiasis	2	3	1	1	170	6	640
	Acute viral hepatitis(excluding Hepatitis A,Hepatitis E)				1	33	1	261
	Acute encephalitis				1	15	(1)	(166)
	Cryptosporidiosis					1		9
	Creutzfeldt-Jakob Disease		1			15		140
	Sever invasive streptococcal infections	1	1		2	7	1	53
	Acquired immunodeficiency syndrome	5	6	6	8	387	16	1066
	Giardiasis	1	2			12		75
	Meningococcal meningitis					3		10
	Congenital rubella syndrome							1
	Syphilis	7	2	1	2	89	9	504
	Tetanus				1	2		104
	Vancomycin-resistant <i>Staphylococcus aureus</i> infection							
	Vancomycin-resistant <i>enterococcus</i> infection			1		12		63

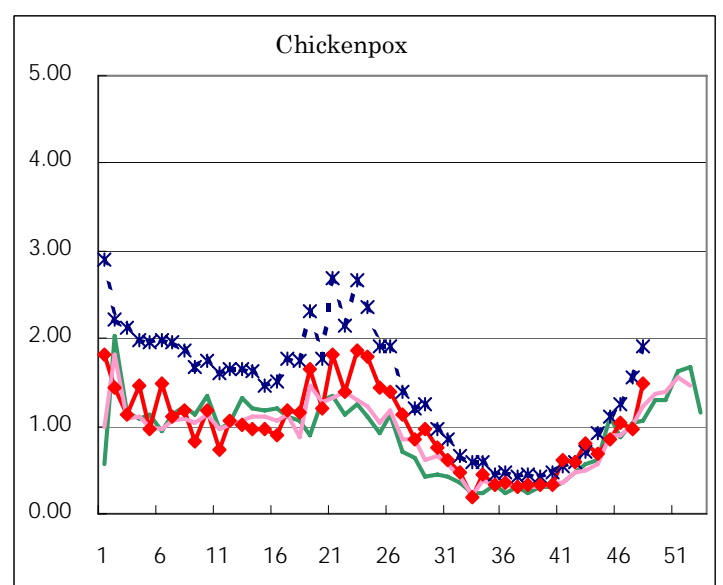
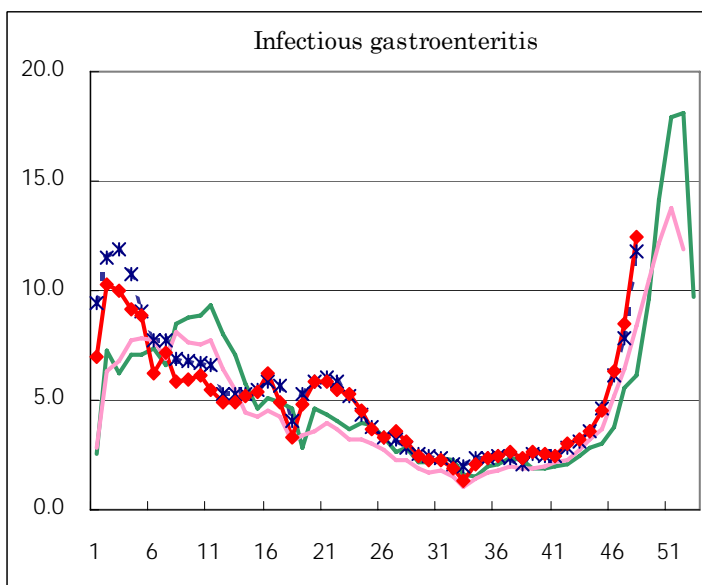
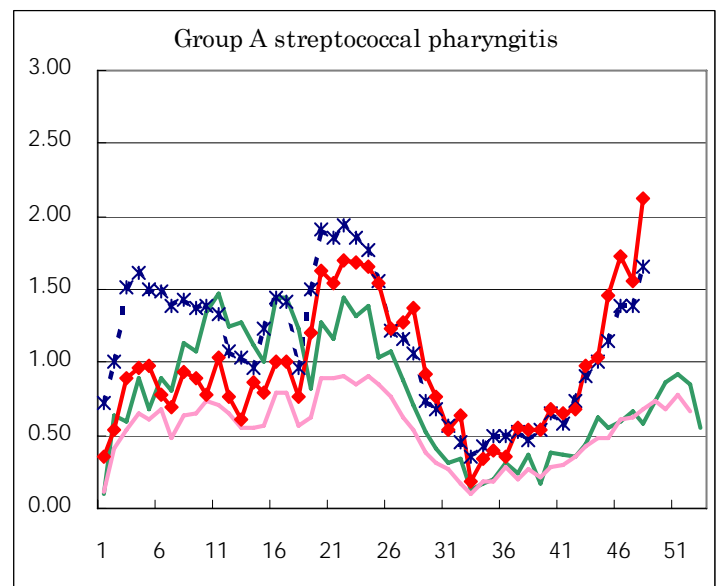
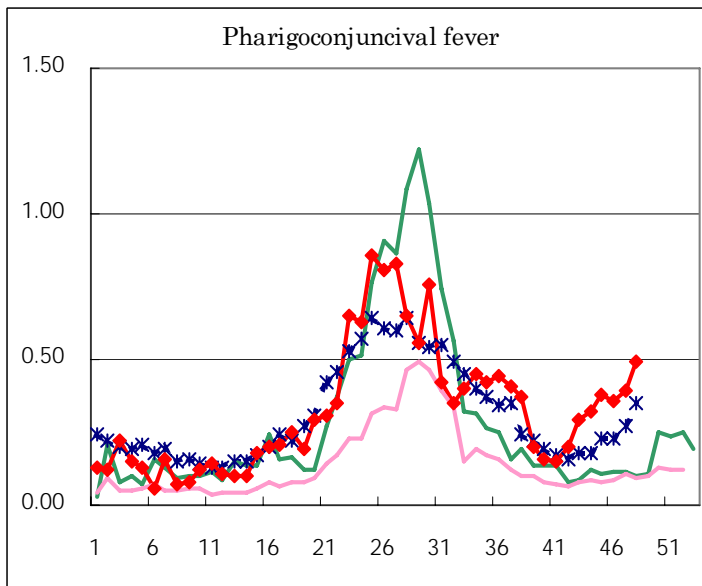
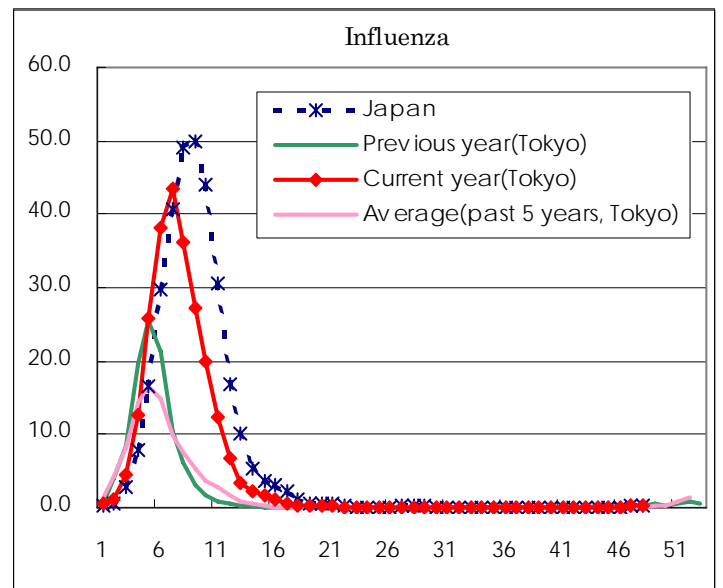
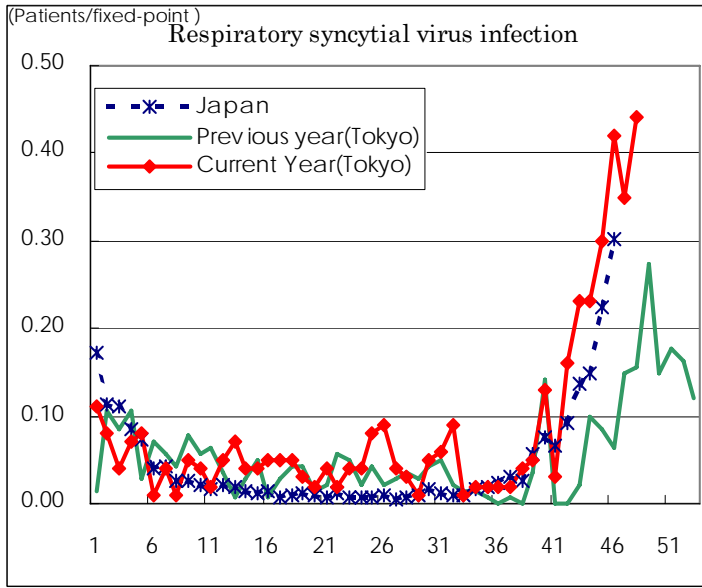
( Blank means 0. )

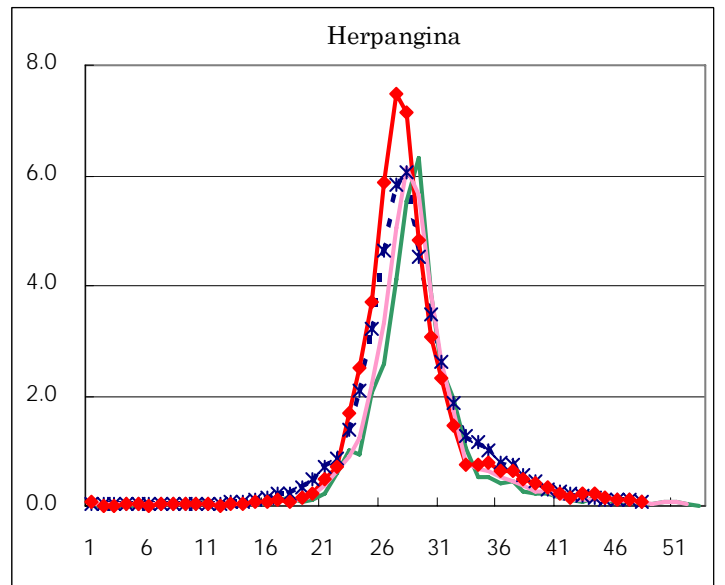
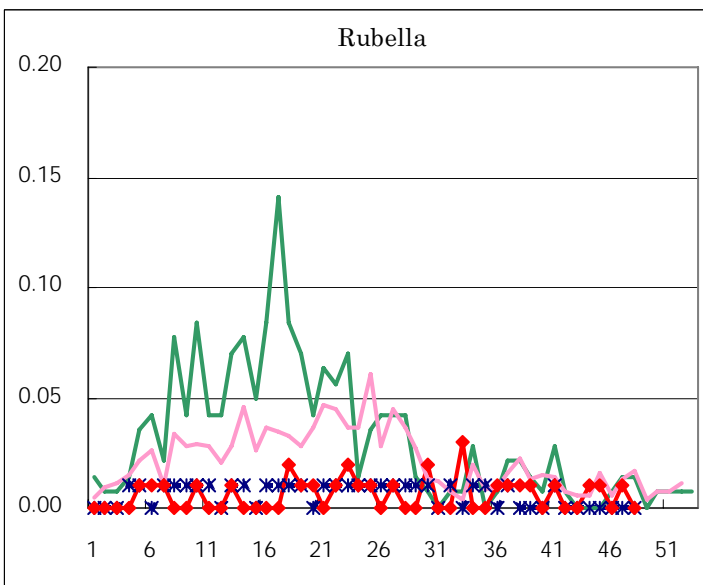
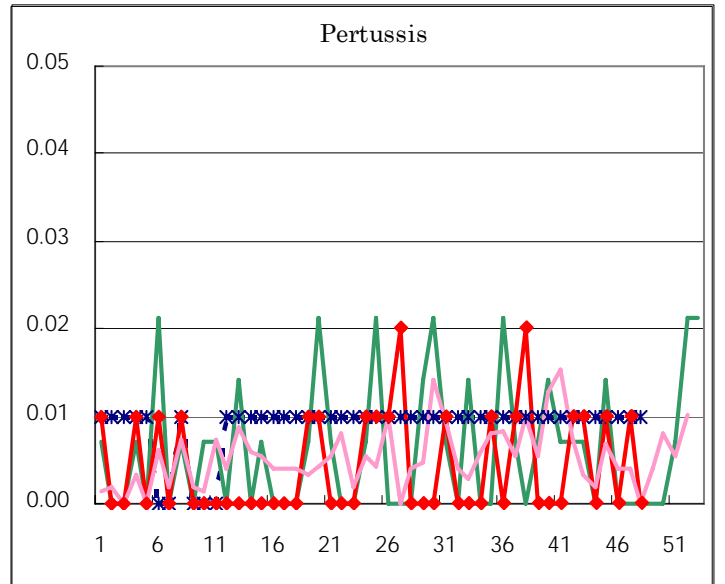
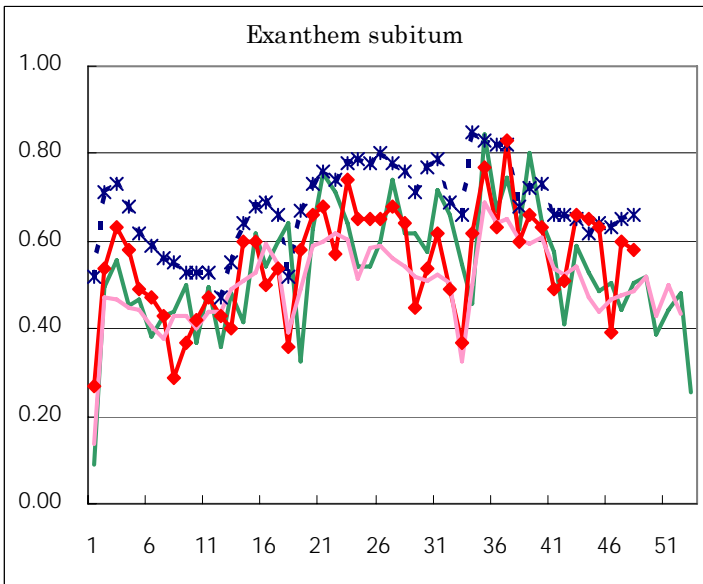
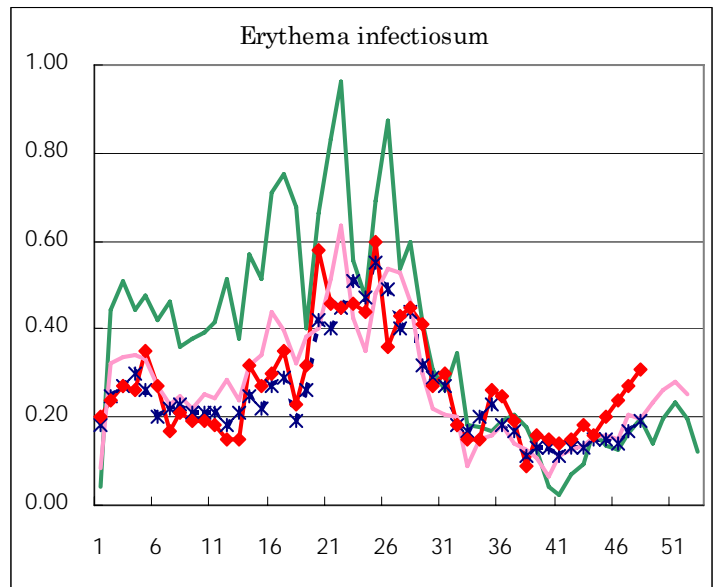
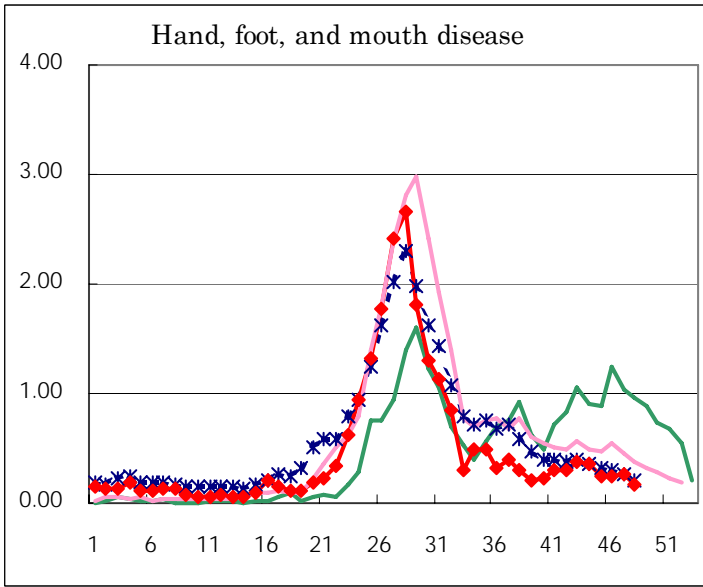
Number of patients with the diseases to be reported  
by the designated clinics and hospitals

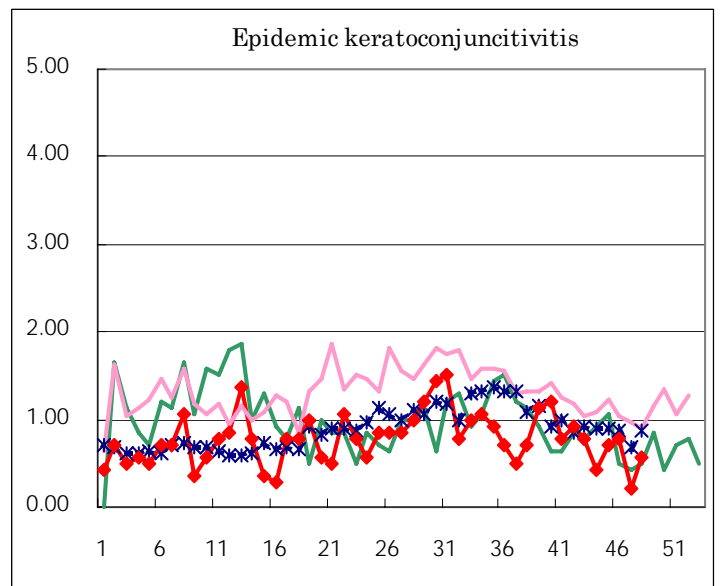
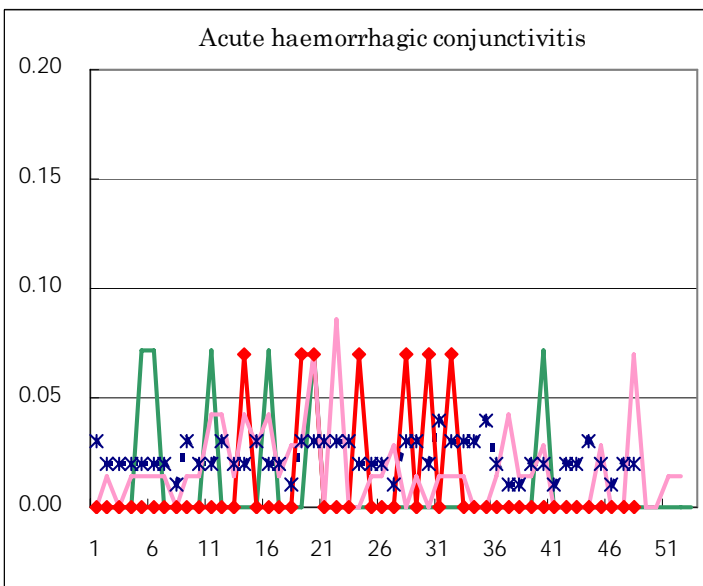
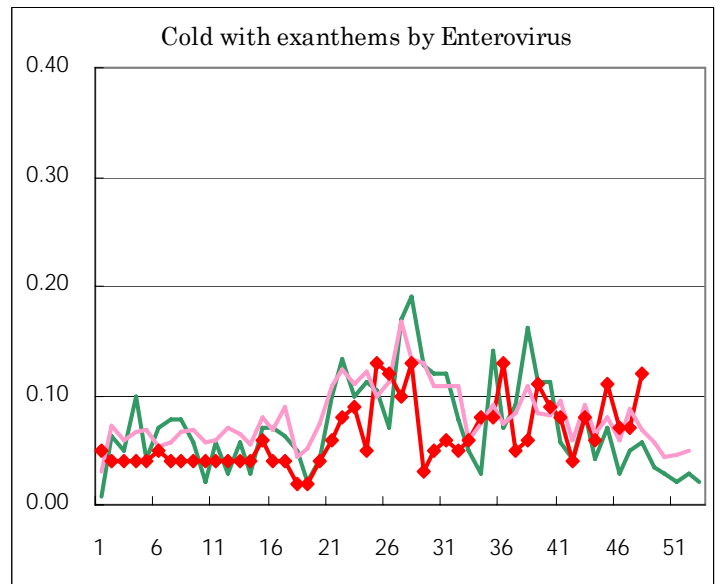
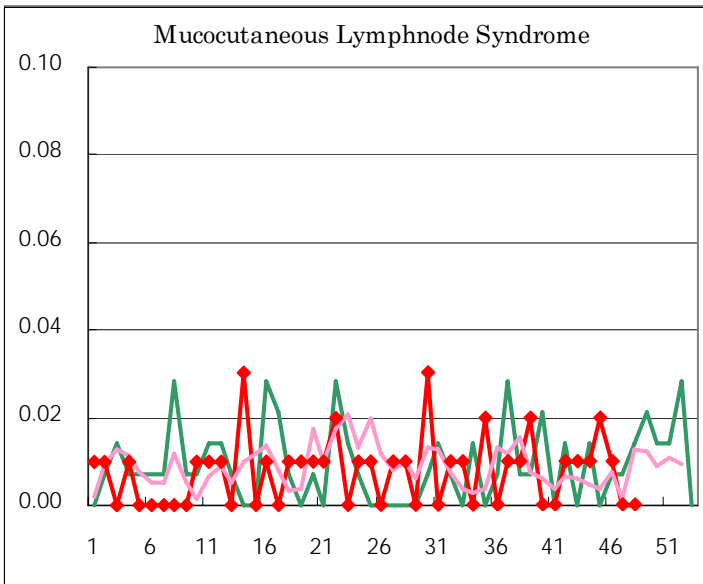
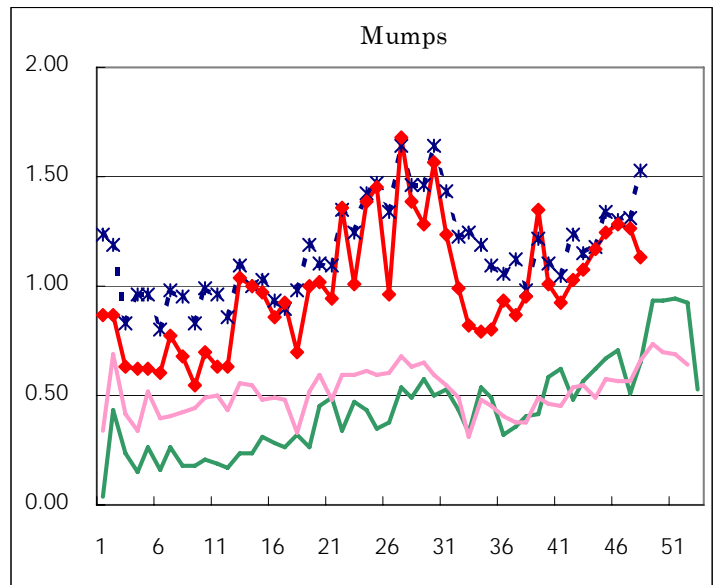
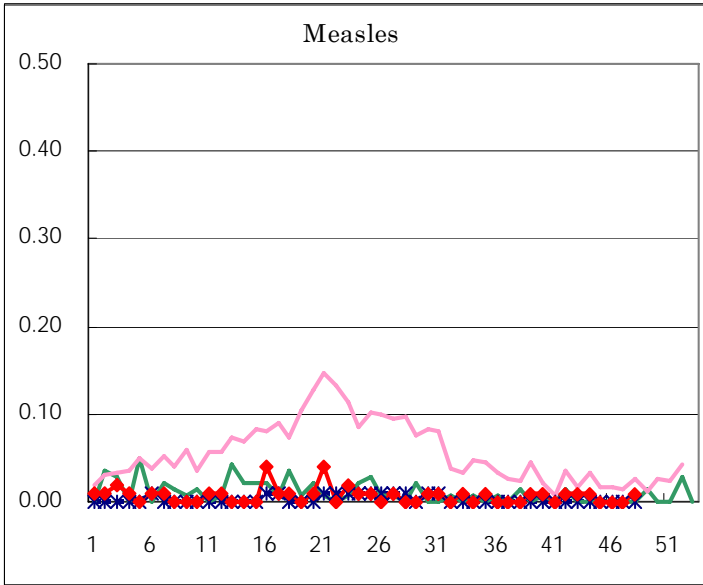
Diseases	Sex	2005				Total
		45th	46th	47th	48th	
Respiratory syncytial virus infection	M	20	34	22	35	111
	F	23	26	27	27	103
Influenza	M	3	15	15	27	60
	F	2	10	18	21	51
Pharygoconjunctival fever	M	29	29	29	29	116
	F	25	22	27	40	114
Group A streptococcal pharyngitis	M	118	124	108	169	519
	F	90	121	114	132	457
Infectious gastroenteritis	M	333	468	647	919	2,367
	F	305	435	564	846	2,150
Chickenpox	M	65	76	73	118	332
	F	55	72	63	94	284
Hand, foot, and mouth disease	M	24	19	24	13	80
	F	12	15	15	11	53
Erythema infectiosum	M	11	13	12	22	58
	F	18	21	26	22	87
Exanthem subitum	M	48	32	39	50	169
	F	41	23	46	33	143
Pertussis	M	1		1		2
	F					
Rubella	M					
	F	1		1		2
Herpangina	M	10	6	8	7	31
	F	10	13	7	3	33
Measles	M					
	F				1	1
Mumps	M	92	106	96	79	373
	F	86	76	83	81	326
Cold with exanthems by Enterovirus	M	9	3	6	10	28
	F	6	7	4	7	24
Mucocutaneous Lymphnode Syndrome	M	3				3
	F		1			1
Acute hemorrhagic conjunctivitis	M					
	F					
Epidemic keratoconjunctivitis	M	3	6	3	6	18
	F	7	5		2	14
Bacterial meningitis	M	1	1			2
	F	1			1	2
Aseptic meningitis	M					
	F			1		1
Mycoplasma pneumonia	M	6	3	4	2	15
	F	4	4	1	1	10
Chlamydial pneumonia (excluding psittacosis)	M	1				1
	F					
Measles in adults	M					
	F					

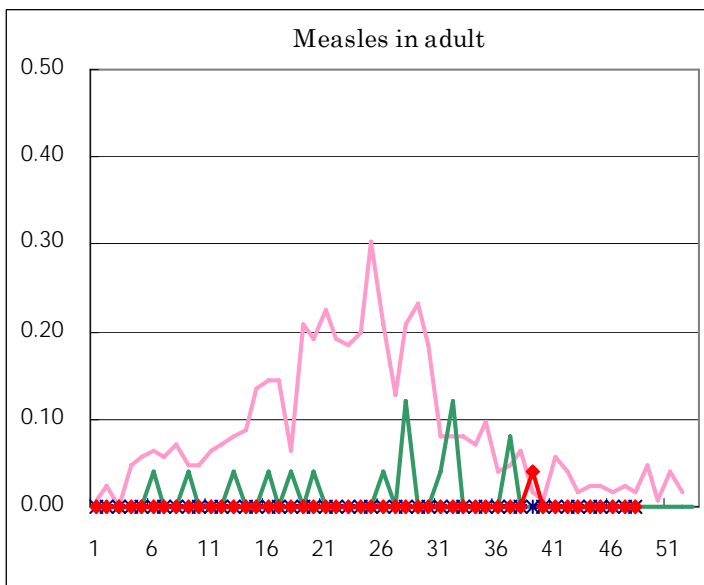
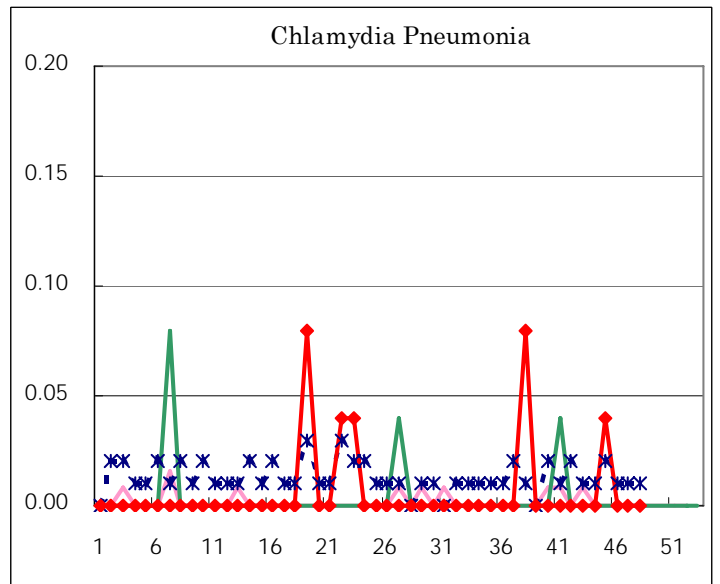
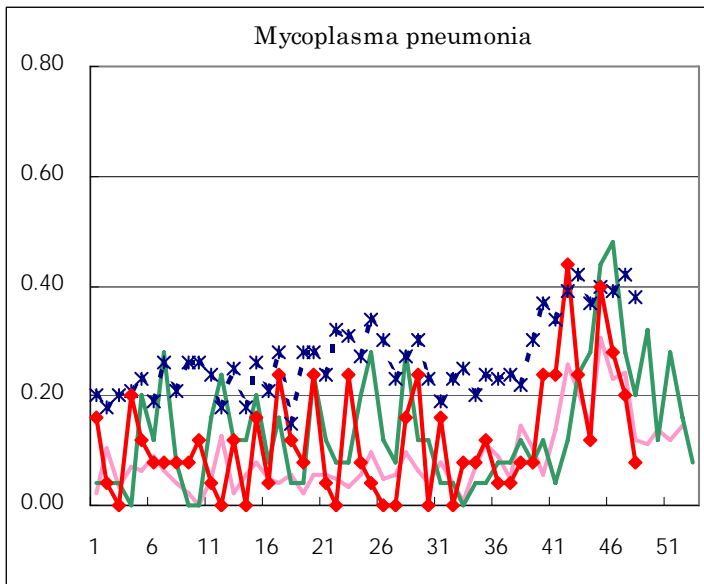
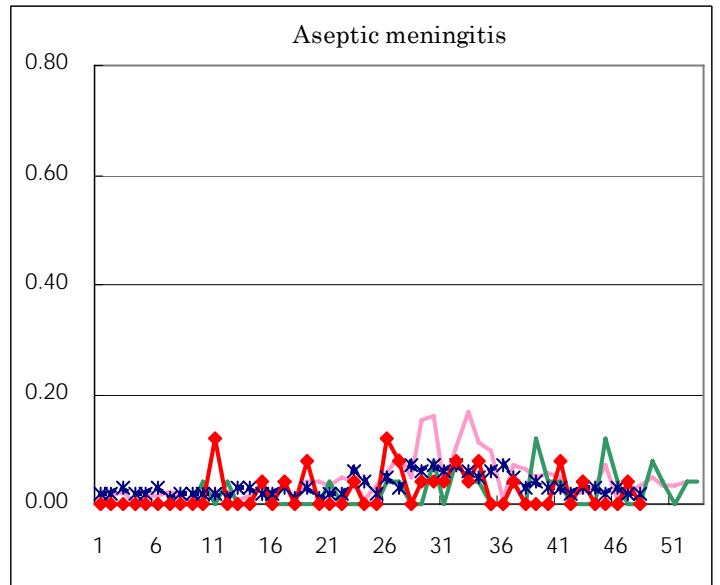
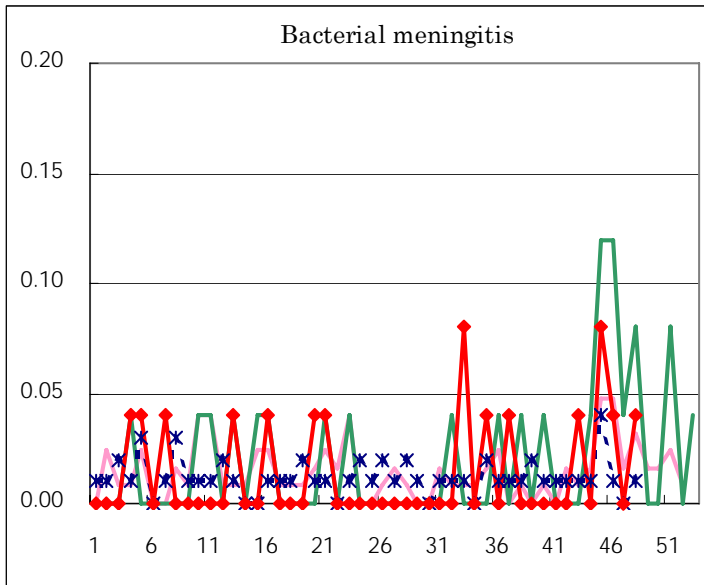
( Blank means 0. )

# Disease Trend Graph (weekly reported cases per fixed-point in comparison)









Tokyo Metropolitan Government  
**Infectious Disease Surveillance Center**