

INFECTIOUS DISEASES WEEKLY REPORT

TOKYO IDWR

Tokyo Metropolitan Institute of Public Health

4 January 2006 / Number 51

- Number of patients with the diseases required notifying all the cases
- Number of patients with the diseases to be reported by the sentinel clinics and hospitals
- Disease trend graph (weekly reported cases per sentinel in comparison)

Surveillance System in Tokyo, Japan

The infectious diseases which all physicians must report

All physicians must report to health centers the incidence of the diseases which are shown at page one. Health centers electronically report the individual cases to Tokyo Metropolitan Infectious Disease Surveillance Center.

The infectious diseases required to be reported by the sentinels

The numbers of patients who visit the sentinel clinics or hospitals during a week are reported to health centers in Tokyo. And they electronically report the numbers to Tokyo Metropolitan Infectious Disease Surveillance Center. We have about 260 sentinel clinics and hospitals in Tokyo.

1st Week is early January and 52nd Week is end of December.

Tokyo Metropolitan Infectious Disease Surveillance Center
Tokyo Metropolitan Institute of Public Health

TEL:81-3-3363-3213 FAX:81-3-5332-7365
e-mail:idsc@tokyo-eiken.go.jp
URL:idsc.tokyo-eiken.go.jp/

Number of patients with the diseases which all physicians must report

Category	Diseases	Tokyo				Japan		
		48th	49th	50th	51st	Total	51st	Total
I	Ebola hemorrhagic fever							
	Crimean-Congo hemorrhagic fever							
	Severe acute respiratory syndrome							
	Smallpox							
	Plague							
	Marburg disease							
	Lassa fever							
II	Acute poliomyelitis							
	Cholera	1		1		12	1	53
	Shigellosis	3	1	1		89	6	550
	Diphtheria							
	Typhoid fever					11		49
	Paratyphoid fever					4		18
III	Enterohemorrhagic <i>Escherichia coli</i> infection	1	2	1		236	26	3555
IV	Hepatitis E					8		(39)
	West Nile fever							(1)
	Hepatitis A	2				24		(163)
	Echinococcosis					1		18
	Yellow fever							
	Psittacosis					3		33
	Relapsing fever							
	Q fever					3		8
	Rabies							
	High pathogenic avian influenza							
	Coccidioidomycosis			1		1		5
	Monkeypox							
	Hemorrhagic fever with renal syndrome							
	Anthrax							
	Scrub typhus (Tsumugamushi disease)			2		6	9	310
	Dengue fever	1				29		72
	Nipah virus infection							
	Japanese spotted fever							61
	Japanese encephalitis							7
	Hantavirus pulmonary syndrome							
	B virus disease							
Brucellosis					1	1	2	
Epidemic typhus								
Botulism					1	0	3	
Malaria		1			21		66	
Tularemia								
Lyme disease					4		8	
Lyssavirus infection								
Legionellosis	1				24	3	272	
Leptospirosis					3		(14)	
V	Amebiasis	1	4	3	3	180	3	673
	Acute viral hepatitis(excluding Hepatitis A,Hepatitis E)	1		1		34	1	272
	Acute encephalitis	1		1		16	(1)	(174)
	Cryptosporidiosis					1		9
	Creutzfeldt-Jakob Disease					15	1	146
	Sever invasive streptococcal infections	2				7	2	57
	Acquired immunodeficiency syndrome	8	5	11	8	411	12	1137
	Giardiasis		1			13	1	80
	Meningococcal meningitis					3		10
	Congenital rubella syndrome							2
	Syphilis	2	5	1	3	97	8	544
	Tetanus	1				2		113
	Vancomycin-resistant <i>Staphylococcus aureus</i> infection							
	Vancomycin-resistant <i>enterococcus</i> infection		1			13		64

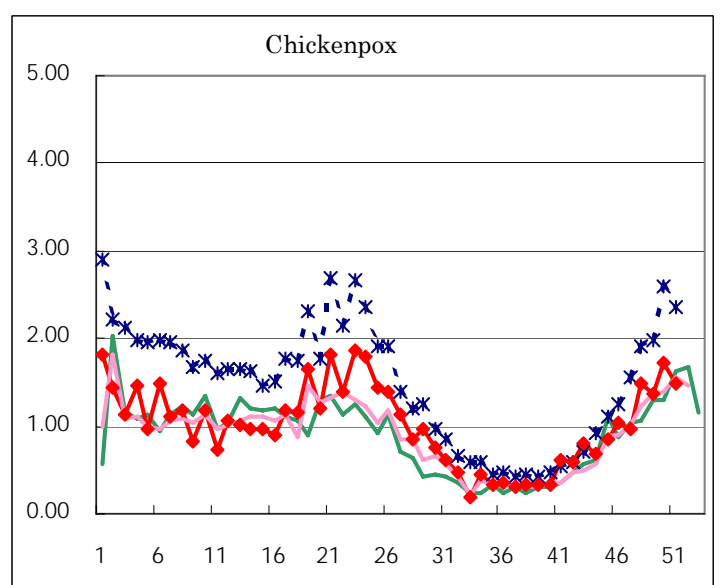
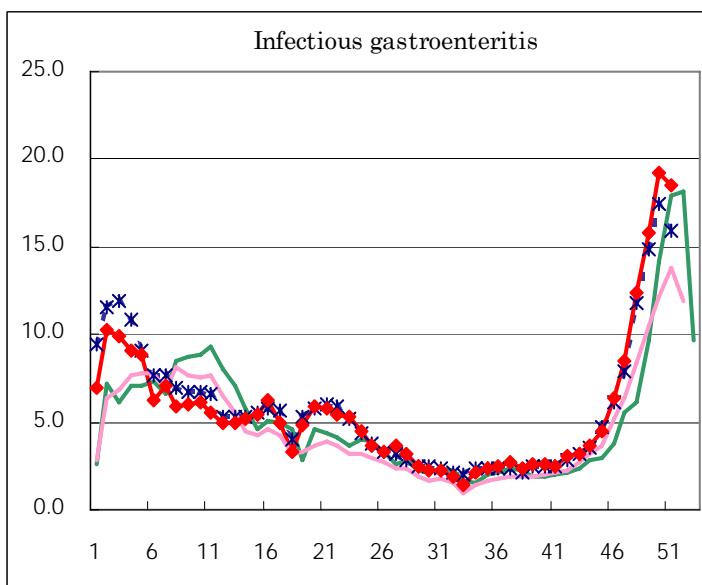
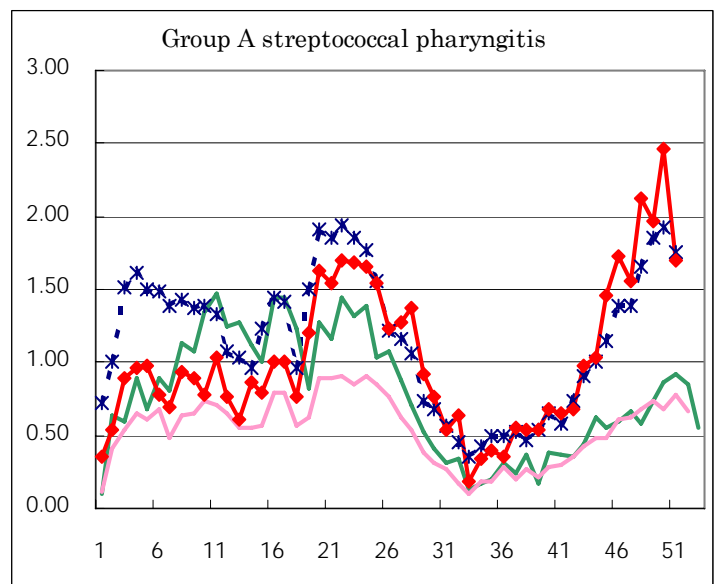
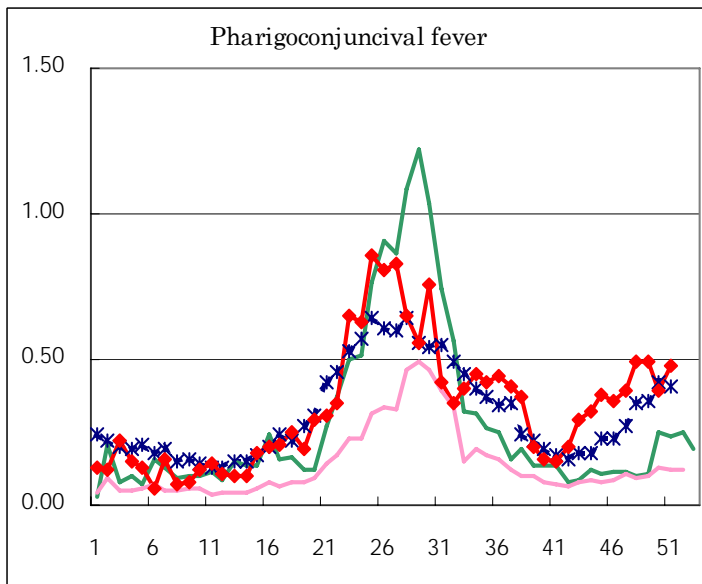
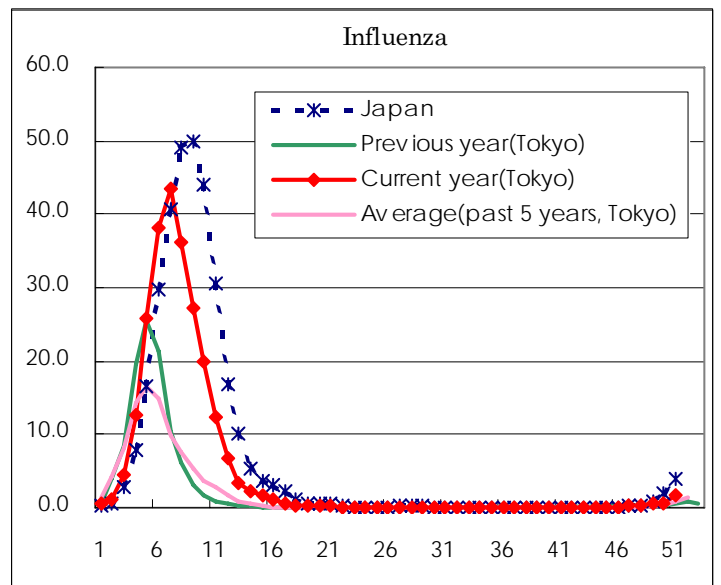
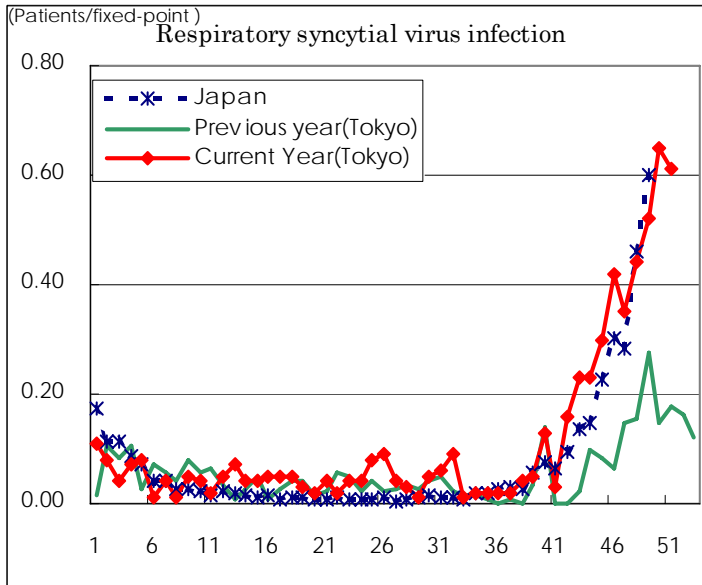
(Blank means 0.)

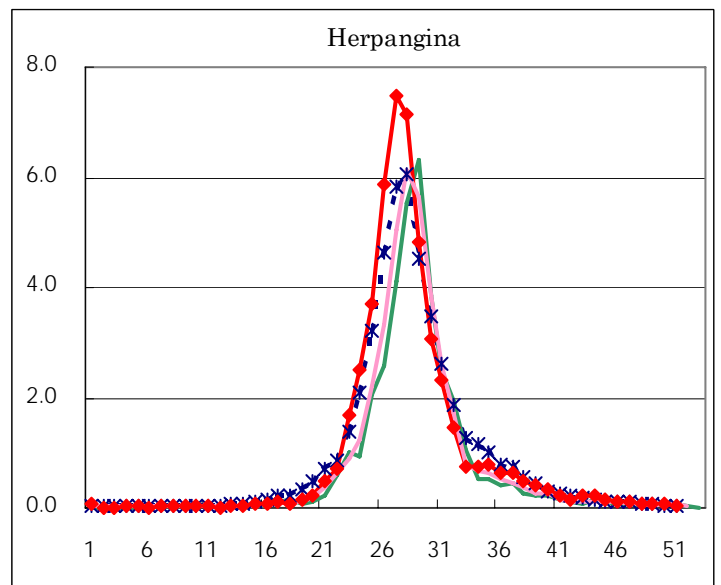
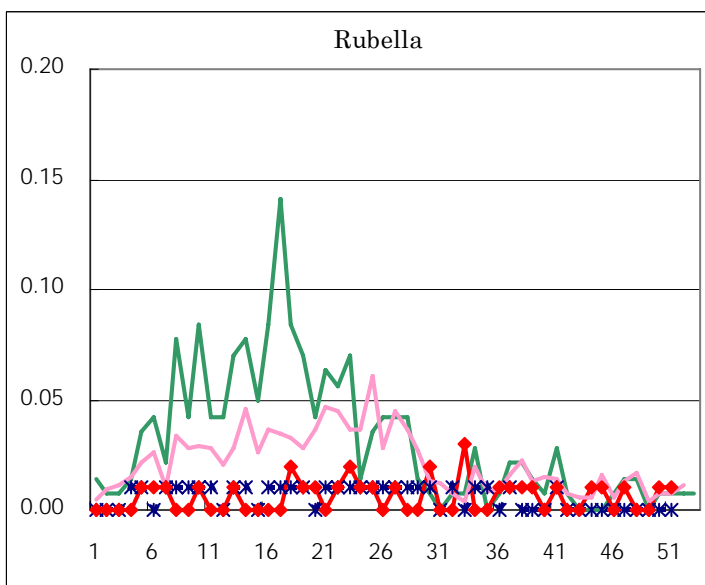
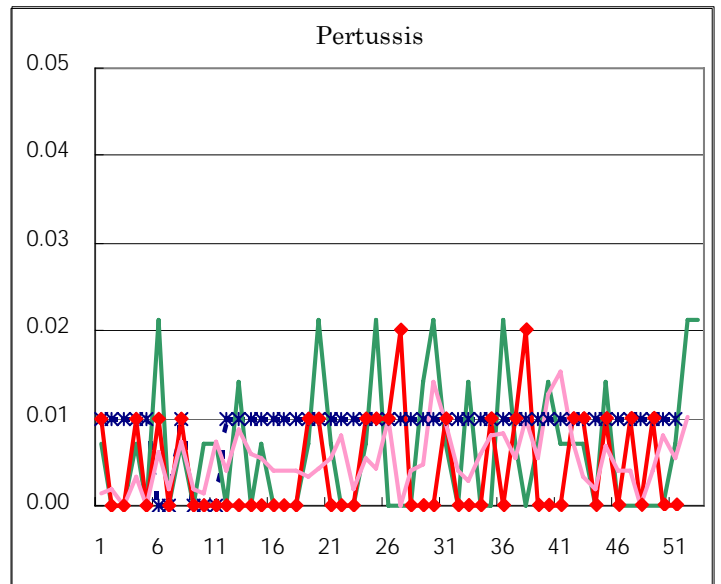
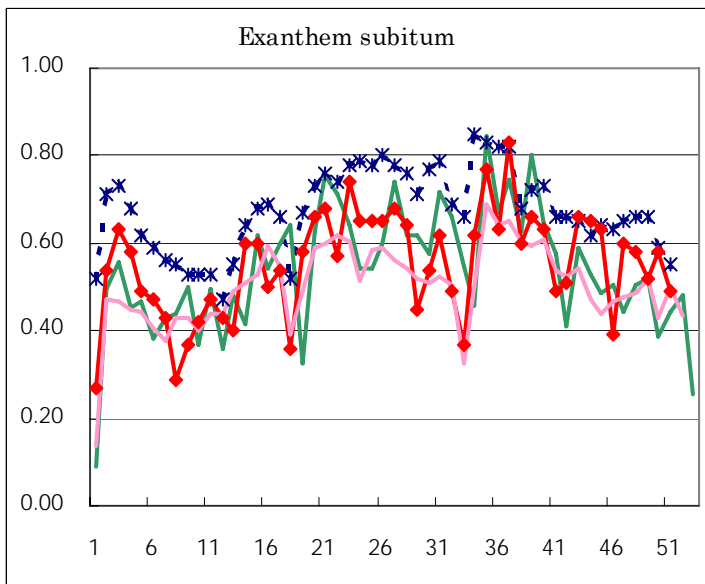
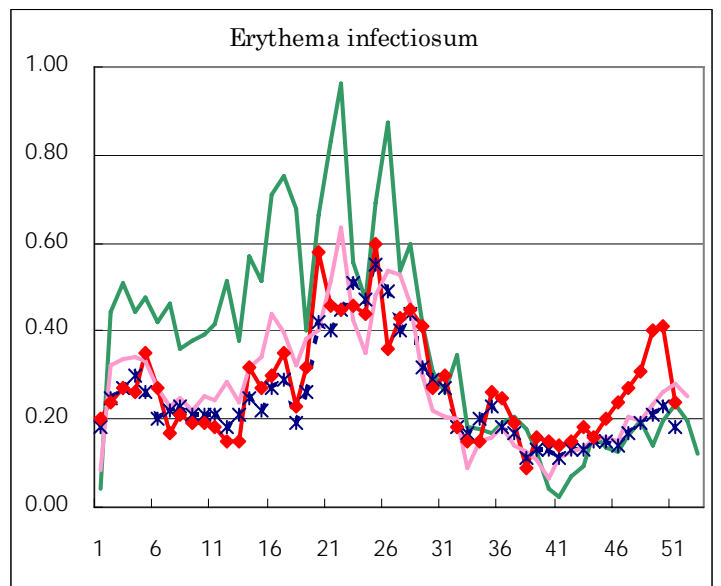
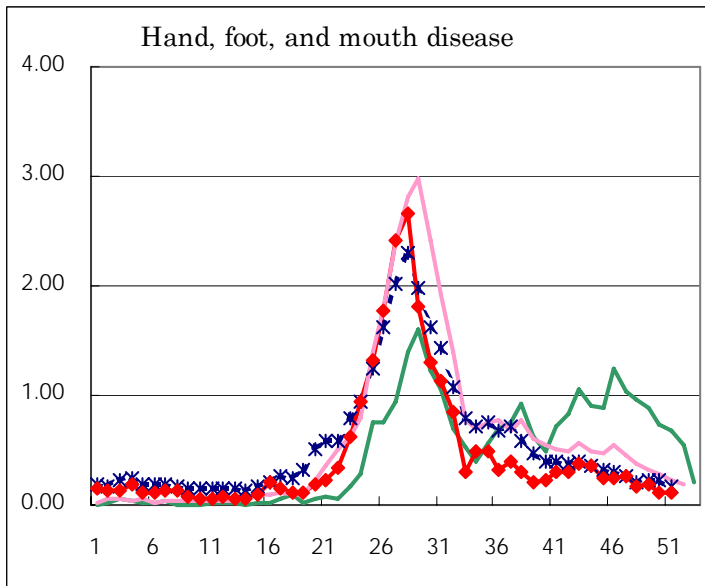
Number of patients with the diseases to be reported
by the designated clinics and hospitals

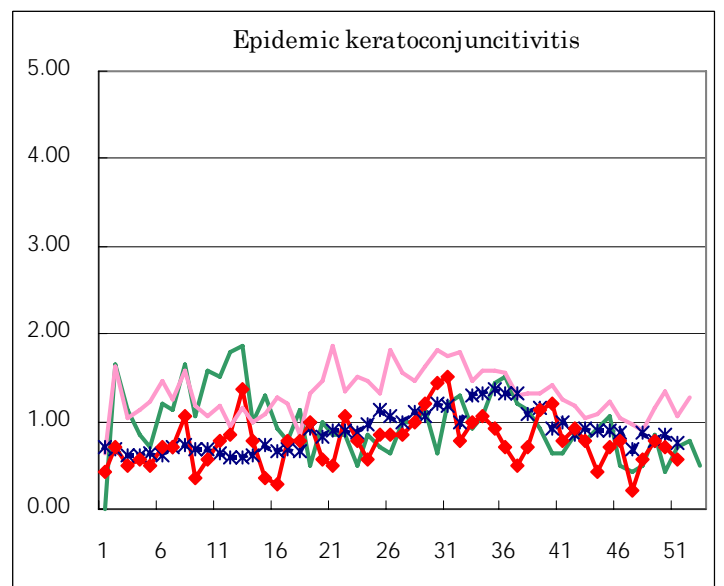
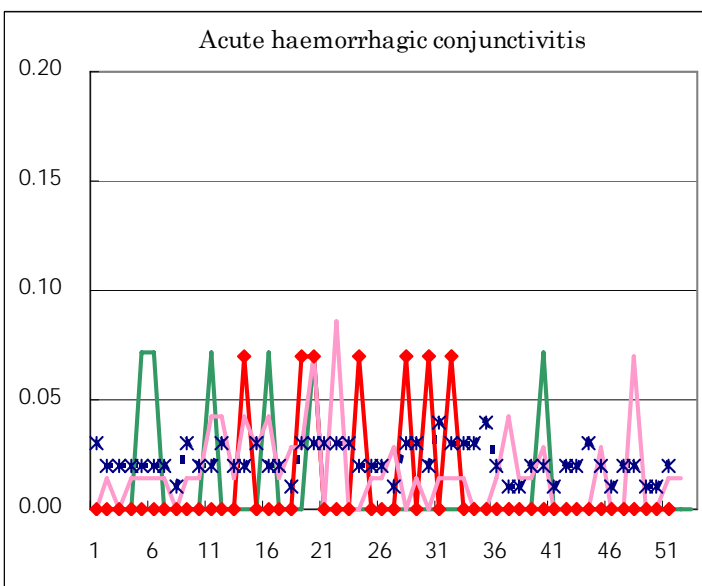
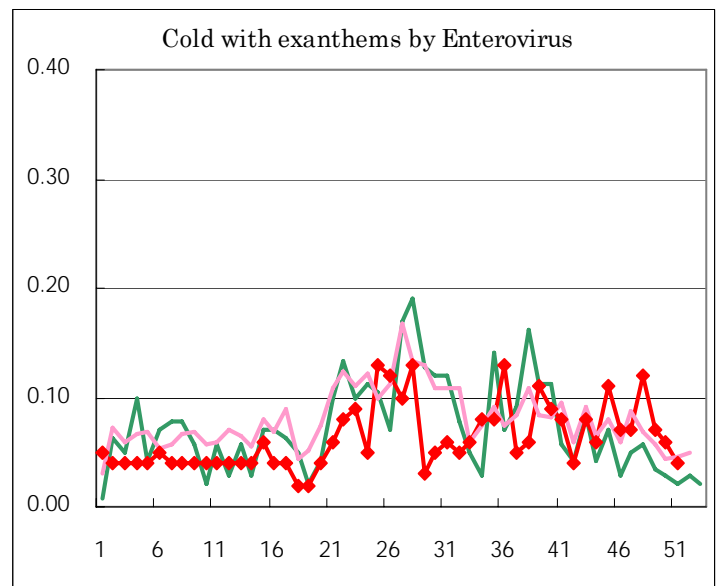
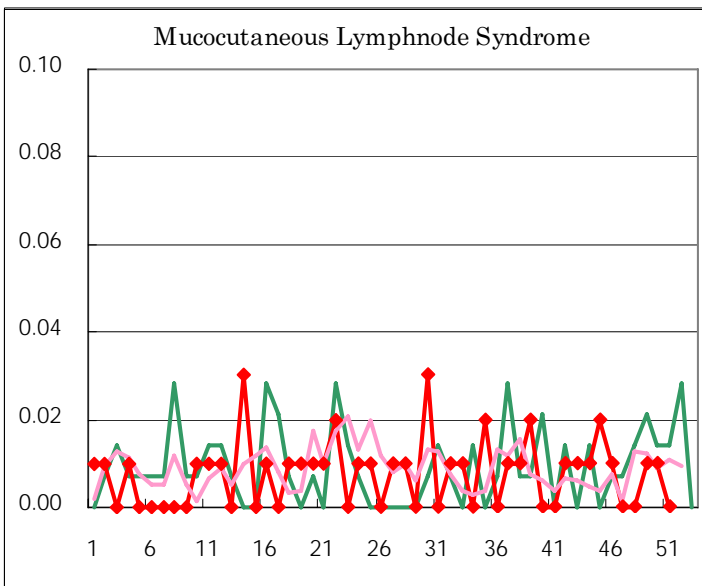
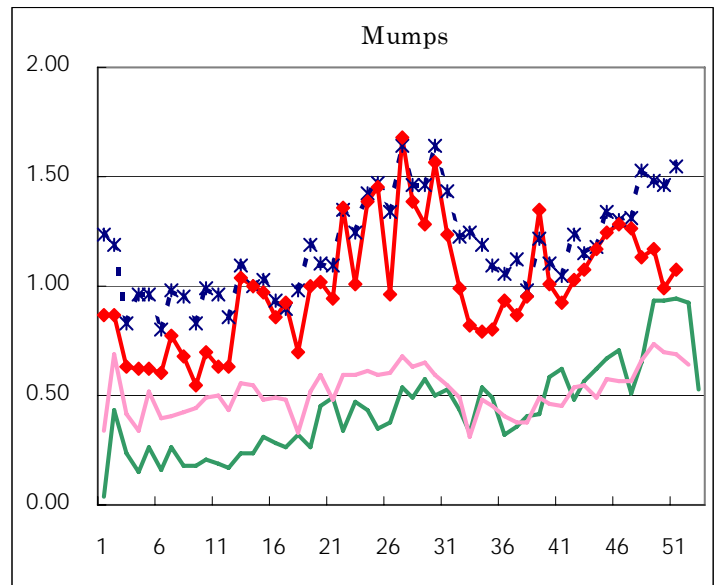
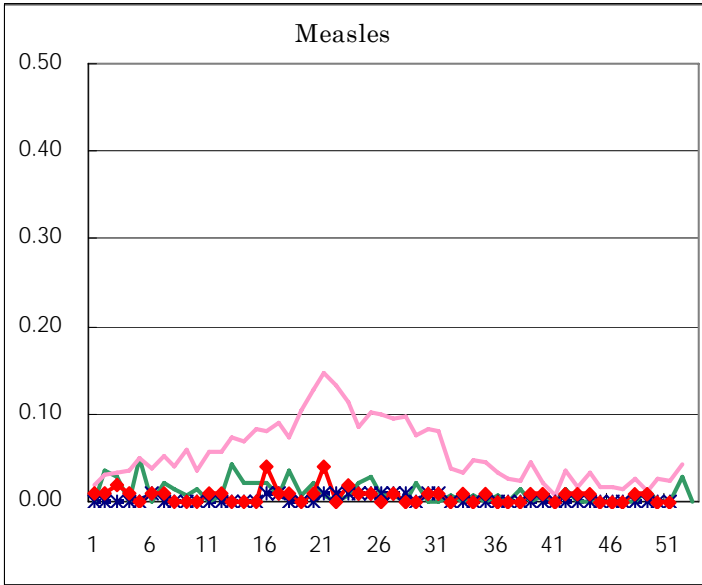
Diseases	Sex	2005				Total
		48th	49th	50th	51st	
Respiratory syncytial virus infection	M	35	41	60	43	179
	F	27	33	33	44	137
Influenza	M	27	41	59	160	287
	F	21	40	63	147	271
Pharygoconjunctival fever	M	29	37	23	41	130
	F	40	33	32	27	132
Group A streptococcal pharyngitis	M	169	154	197	125	645
	F	132	124	152	116	524
Infectious gastroenteritis	M	919	1,138	1,360	1,298	4,715
	F	846	1,114	1,374	1,323	4,657
Chickenpox	M	118	97	132	103	450
	F	94	97	111	107	409
Hand, foot, and mouth disease	M	13	10	4	10	37
	F	11	17	11	7	46
Erythema infectiosum	M	22	28	25	16	91
	F	22	29	33	18	102
Exanthem subitum	M	50	36	44	41	171
	F	33	38	39	28	138
Pertussis	M					
	F		2			2
Rubella	M				1	1
	F			1		1
Herpangina	M	7	3	6	3	19
	F	3	9	7	2	21
Measles	M		1			1
	F	1				1
Mumps	M	79	80	82	84	325
	F	81	86	58	69	294
Cold with exanthems by Enterovirus	M	10	6	2	2	20
	F	7	4	7	4	22
Mucocutaneous Lymphnode Syndrome	M		2	2		4
	F					
Acute hemorrhagic conjunctivitis	M					
	F					
Epidemic keratoconjunctivitis	M	6	4	8	5	23
	F	2	7	2	3	14
Bacterial meningitis	M				1	1
	F	1				1
Aseptic meningitis	M					
	F					
Mycoplasma pneumonia	M	2	3		2	7
	F	1	4	1		6
Chlamydial pneumonia (excluding psittacosis)	M			1		1
	F			1		1
Measles in adults	M					
	F					

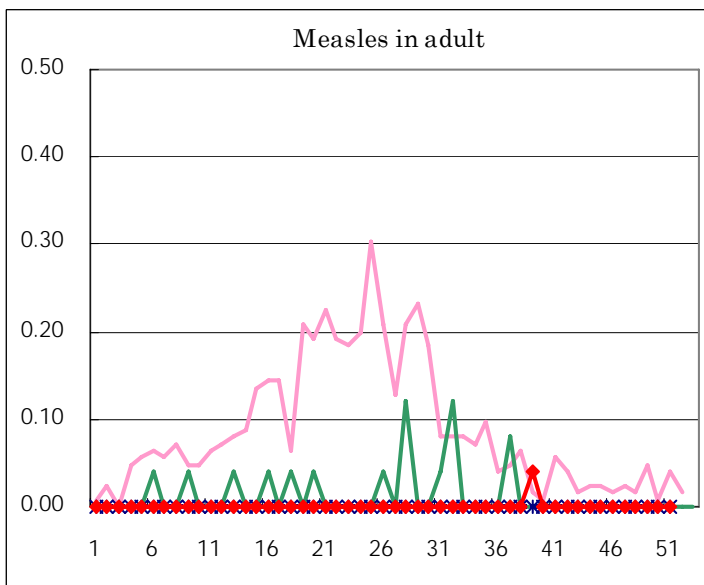
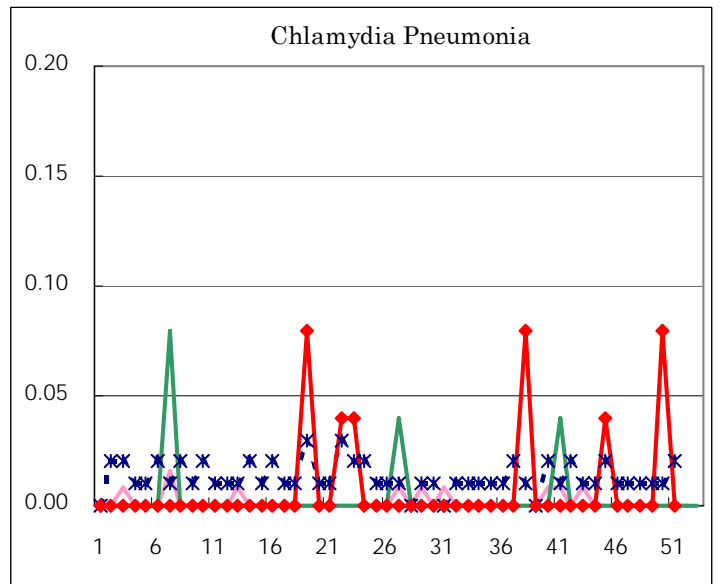
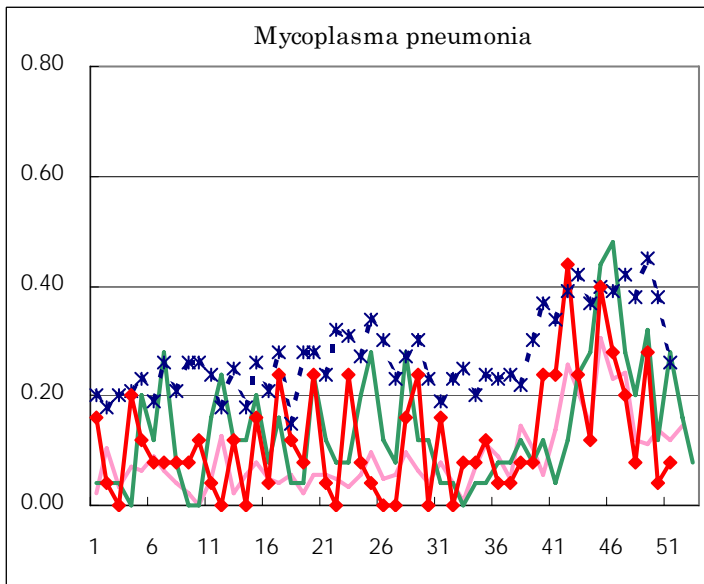
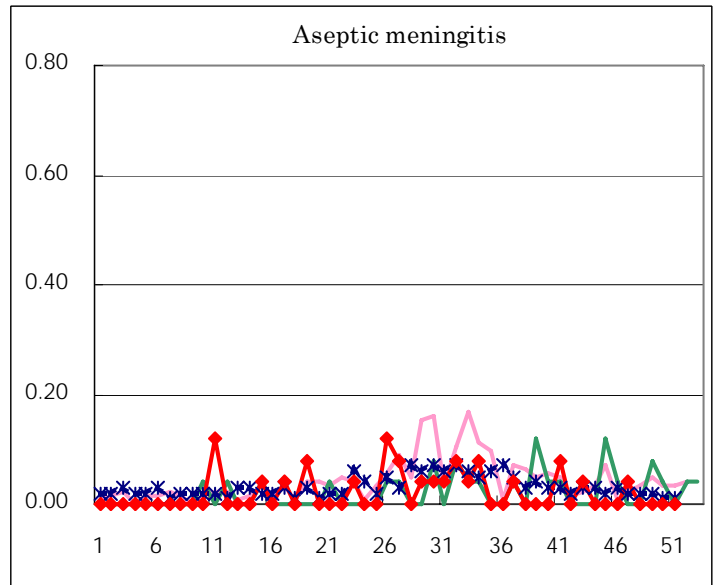
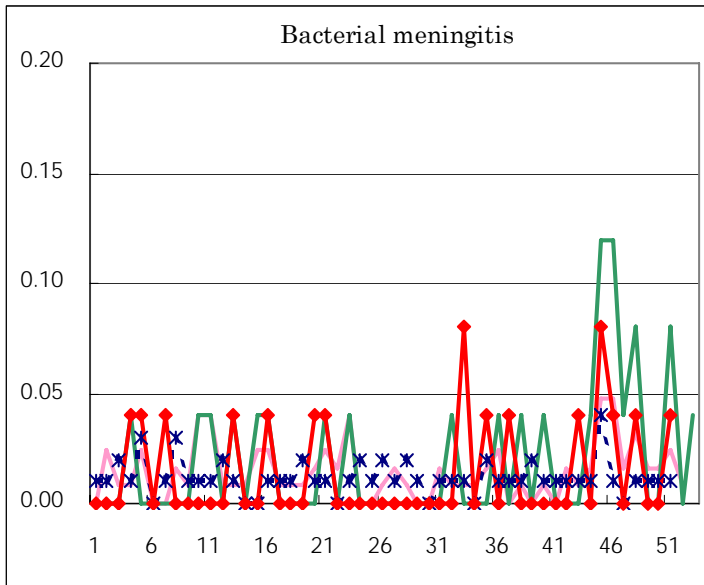
(Blank means 0.)

Disease Trend Graph (weekly reported cases per fixed-point in comparison)









Tokyo Metropolitan Government
Infectious Disease Surveillance Center