

INFECTIOUS DISEASES WEEKLY REPORT

TOKYO IDWR

Tokyo Metropolitan Institute of Public Health

10 January 2006 / Number 52

- Number of patients with the diseases required notifying all the cases
- Number of patients with the diseases to be reported by the sentinel clinics and hospitals
- Disease trend graph (weekly reported cases per sentinel in comparison)

Surveillance System in Tokyo, Japan

The infectious diseases which all physicians must report

All physicians must report to health centers the incidence of the diseases which are shown at page one. Health centers electronically report the individual cases to Tokyo Metropolitan Infectious Disease Surveillance Center.

The infectious diseases required to be reported by the sentinels

The numbers of patients who visit the sentinel clinics or hospitals during a week are reported to health centers in Tokyo. And they electronically report the numbers to Tokyo Metropolitan Infectious Disease Surveillance Center. We have about 260 sentinel clinics and hospitals in Tokyo.

1st Week is early January and 52rd Week is end of December.

Tokyo Metropolitan Infectious Disease Surveillance Center
Tokyo Metropolitan Institute of Public Health

TEL:81-3-3363-3213 FAX:81-3-5332-7365
e-mail:idsc@tokyo-eiken.go.jp
URL:idsc.tokyo-eiken.go.jp/

Number of patients with the diseases which all physicians must report

Category	Diseases	Tokyo				Japan		
		49th	50th	51st	52nd	Total	52nd	Total
I	Ebola hemorrhagic fever							
	Crimean-Congo hemorrhagic fever							
	Severe acute respiratory syndrome							
	Smallpox							
	Plague							
	Marburg disease							
	Lassa fever							
II	Acute poliomyelitis							
	Cholera		1		1	13	1	54
	Shigellosis	1	1			89	4	556
	Diphtheria							
	Typhoid fever					11	1	50
	Paratyphoid fever					4		18
III	Enterohemorrhagic <i>Escherichia coli</i> infection	2	1		1	237	13	3567
IV	Hepatitis E					8	(1)	(40)
	West Nile fever							(1)
	Hepatitis A					24	(1)	(165)
	Echinococcosis					1		18
	Yellow fever							
	Psittacosis					3	1	34
	Relapsing fever							
	Q fever					3		8
	Rabies							
	High pathogenic avian influenza							
	Coccidioidomycosis		1			1		5
	Monkeypox							
	Hemorrhagic fever with renal syndrome							
	Anthrax							
	Scrub typhus (Tsutsugamushi disease)		2			6	8	325
	Dengue fever					29		73
	Nipah virus infection							
	Japanese spotted fever						1	62
	Japanese encephalitis							7
	Hantavirus pulmonary syndrome							
	B virus disease							
	Brucellosis					1		2
	Epidemic typhus							
Botulism					1		3	
Malaria	1				21		66	
Tularemia								
Lyme disease					4		8	
Lyssavirus infection								
Legionellosis					24	3	276	
Leptospirosis					3		(14)	
V	Amebiasis	4	3	3	3	183	3	680
	Acute viral hepatitis(excluding Hepatitis A,Hepatitis E)		1		2	36	3	277
	Acute encephalitis		1			16		(176)
	Cryptosporidiosis					1		9
	Creutzfeldt-Jakob Disease					15	1	147
	Sever invasive streptococcal infections					7	2	60
	Acquired immunodeficiency syndrome	5	11	8	6	417	8	1161
	Giardiasis	1				13	1	81
	Meningococcal meningitis					3		10
	Congenital rubella syndrome							2
	Syphilis	5	1	3	1	98	5	555
	Tetanus					2	1	114
	Vancomycin-resistant <i>Staphylococcus aureus</i> infection							
	Vancomycin-resistant <i>enterococcus</i> infection	1				13	1	65

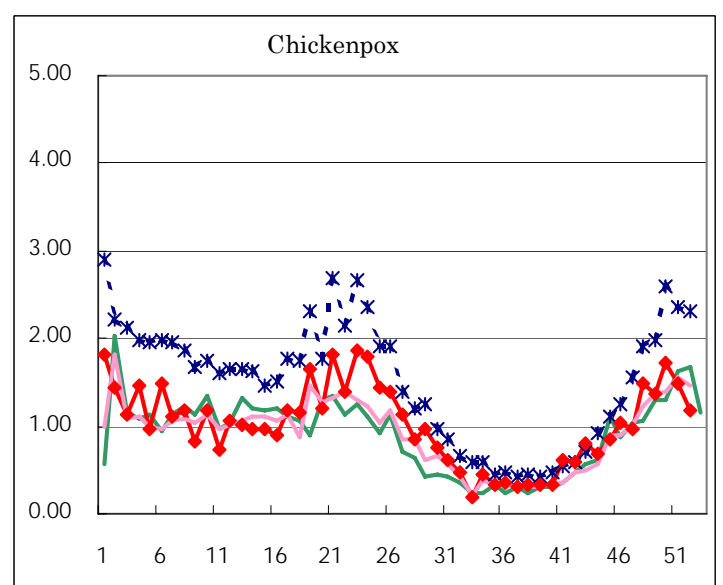
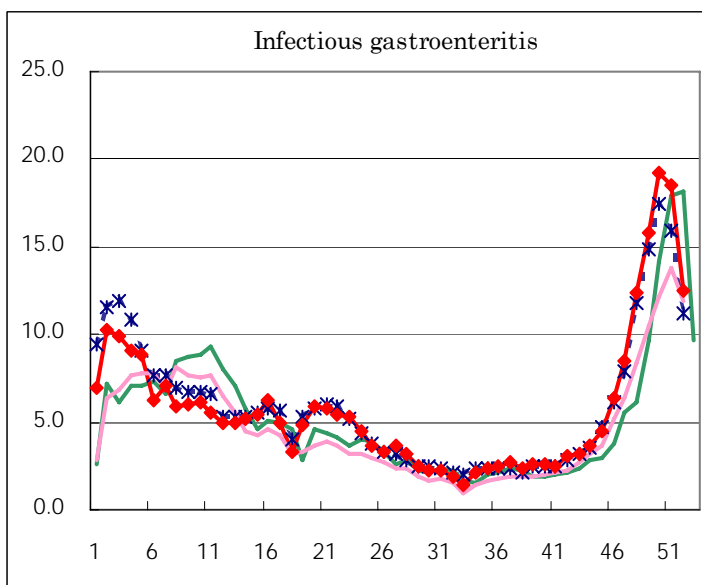
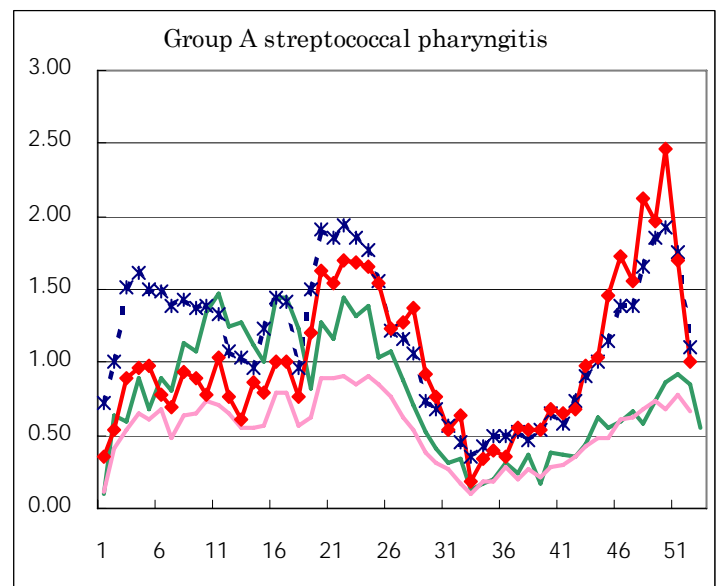
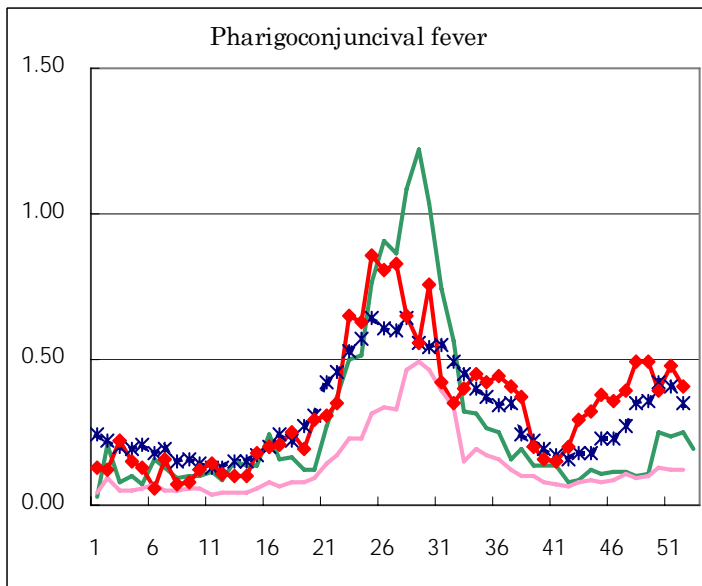
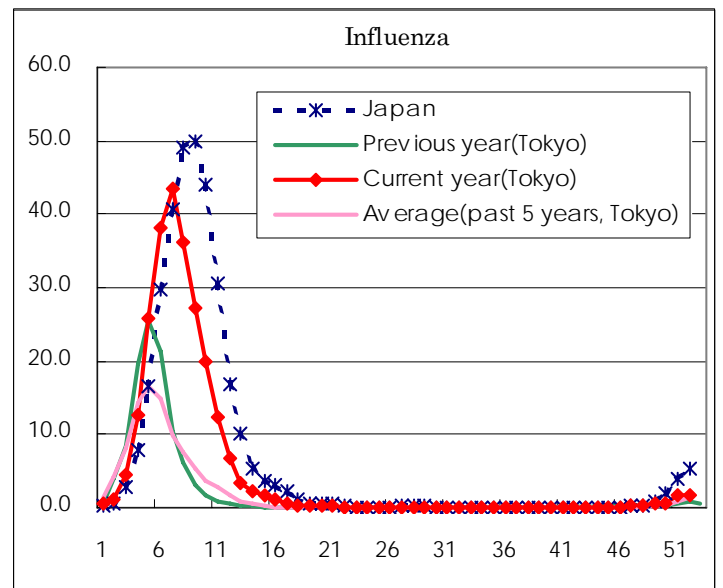
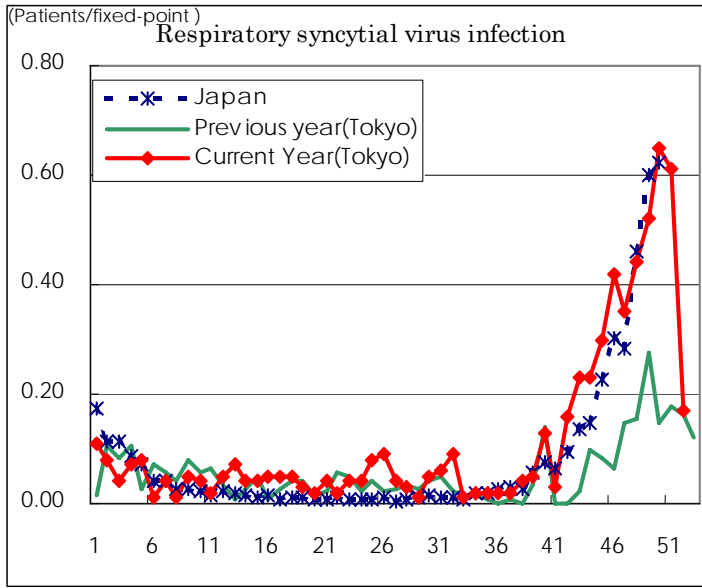
(Blank means 0.)

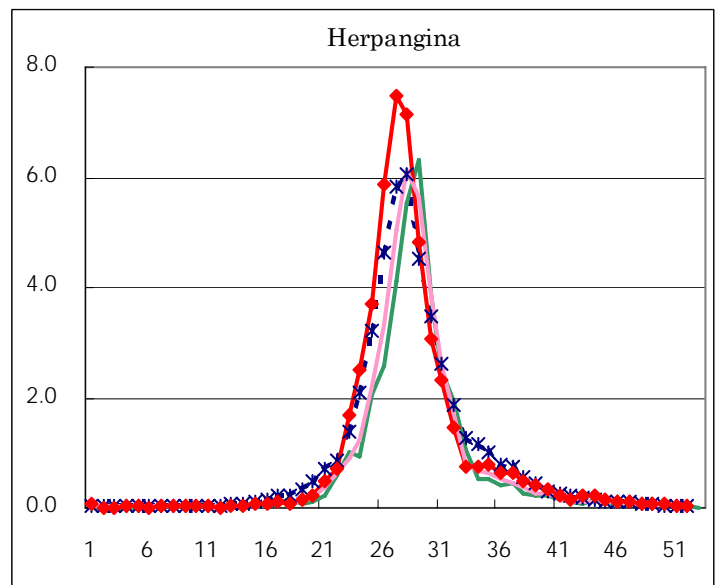
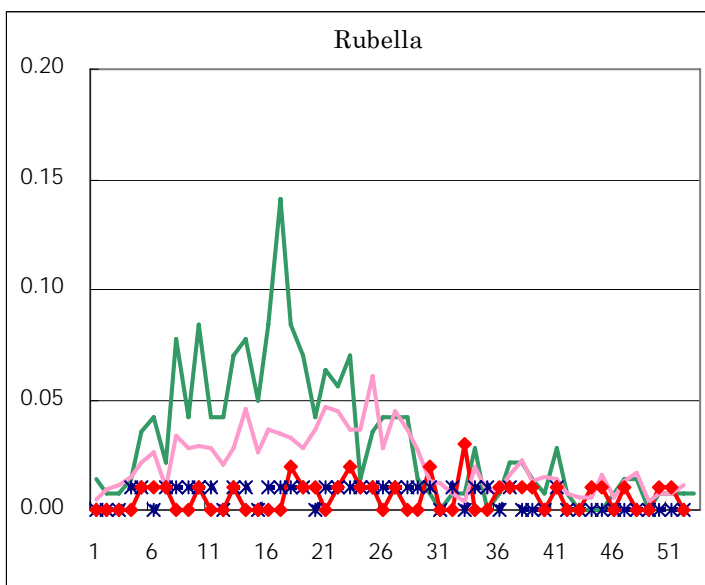
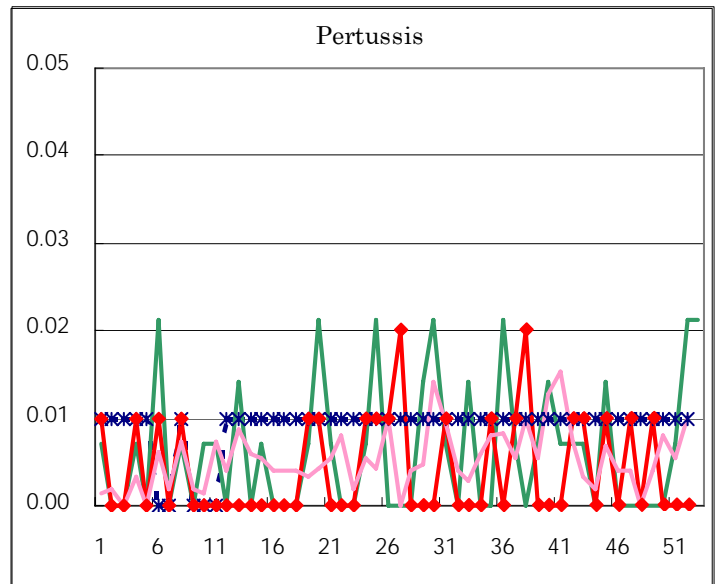
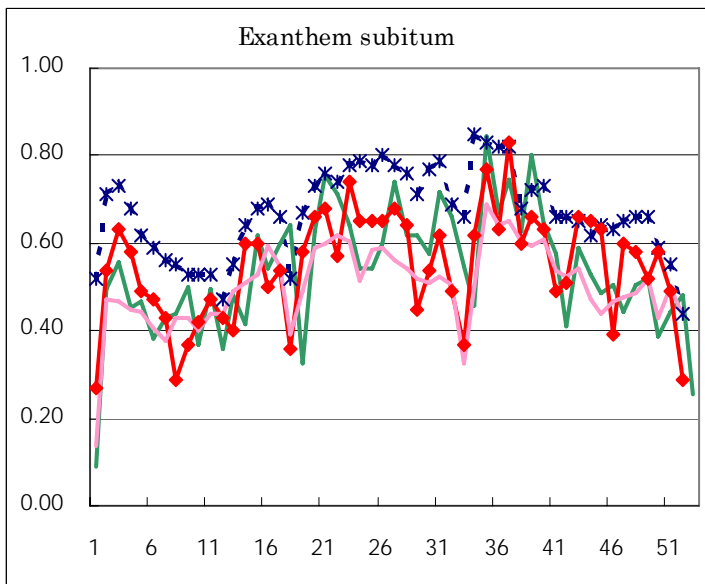
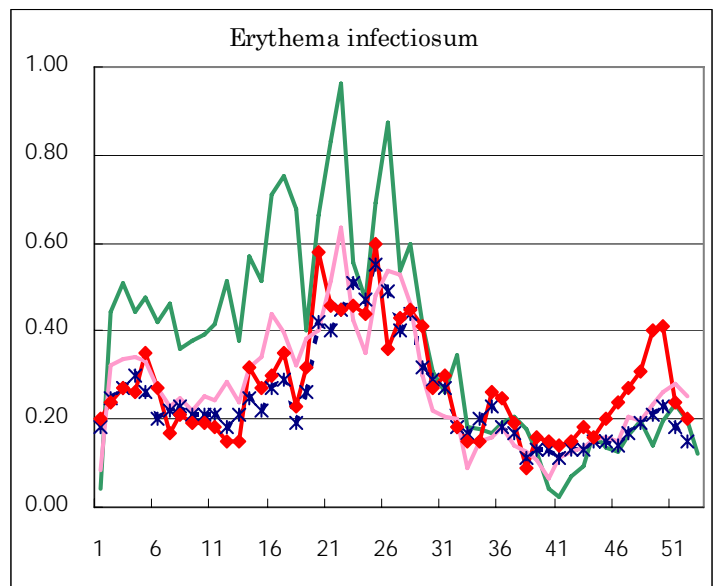
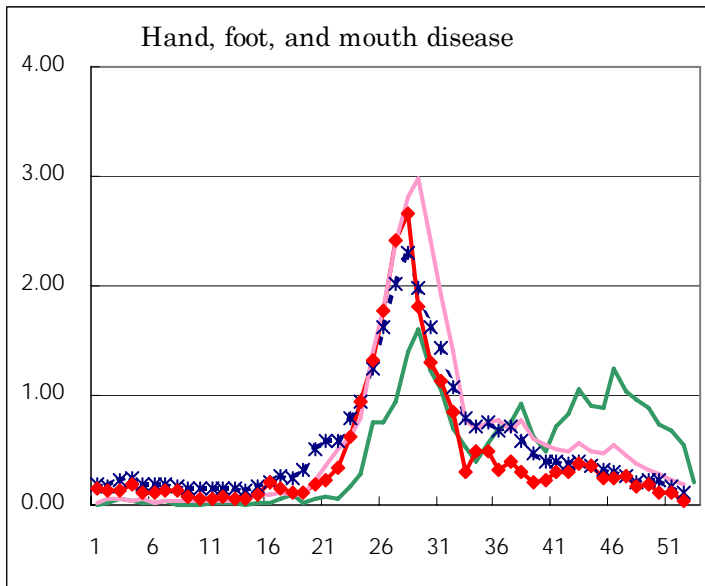
Number of patients with the diseases to be reported
by the designated clinics and hospitals

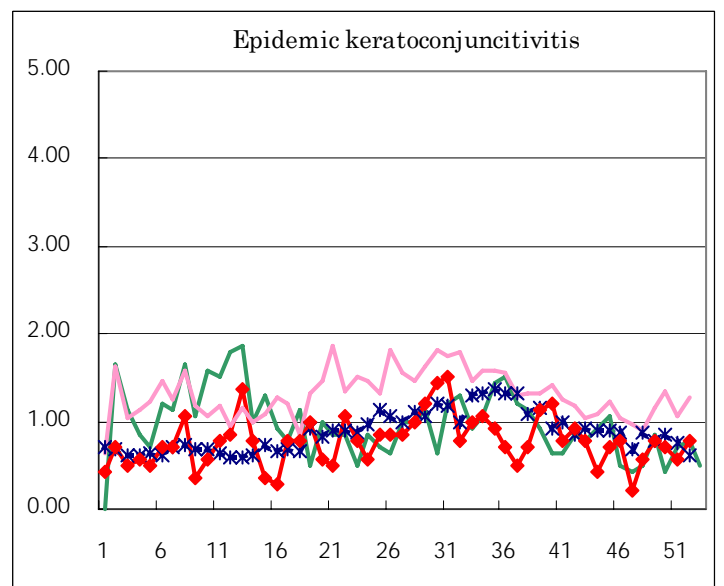
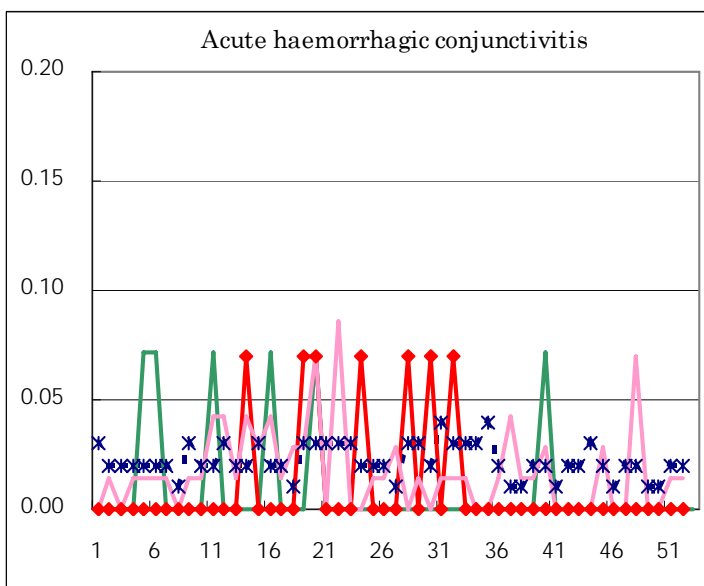
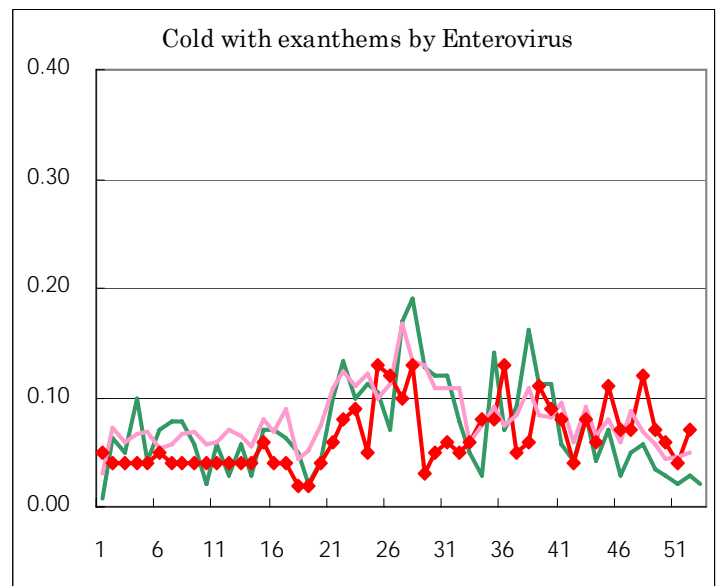
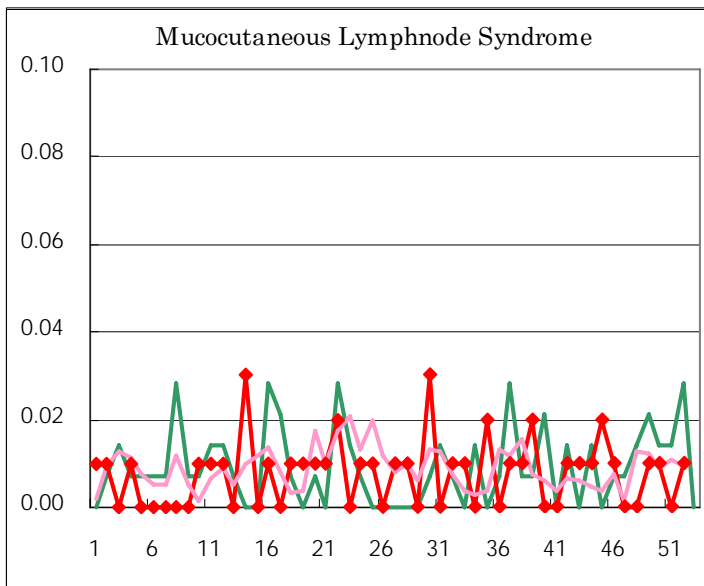
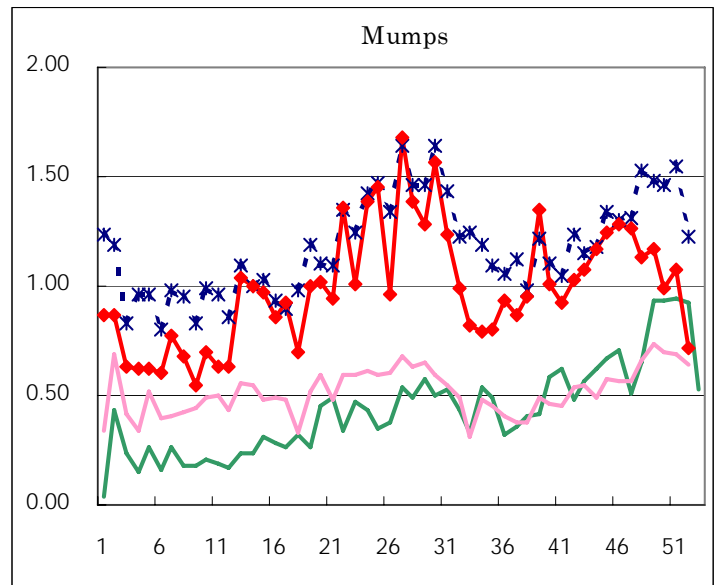
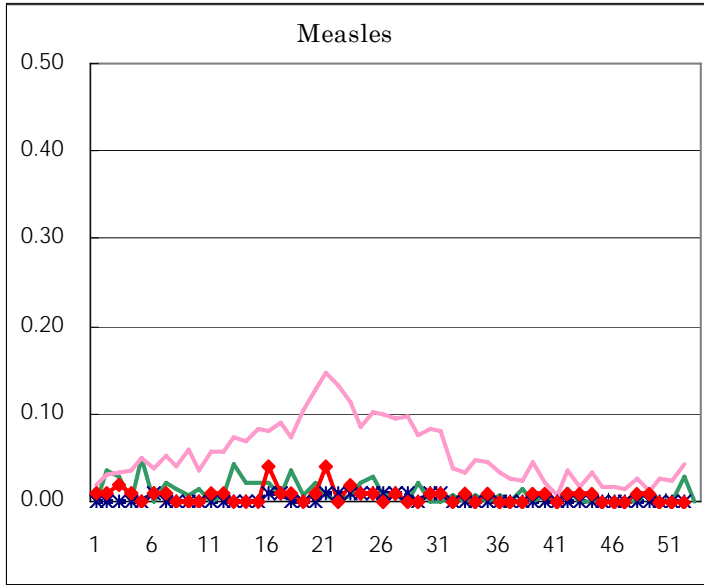
Diseases	Sex	2005				Total
		49th	50th	51st	52nd	
Respiratory syncytial virus infection	M	41	60	43	11	155
	F	33	33	44	13	123
Influenza	M	41	59	160	159	419
	F	40	63	147	155	405
Pharygoconjunctival fever	M	37	23	41	32	133
	F	33	32	27	26	118
Group A streptococcal pharyngitis	M	154	197	125	75	551
	F	124	152	116	69	461
Infectious gastroenteritis	M	1,138	1,360	1,298	906	4,702
	F	1,114	1,374	1,323	862	4,673
Chickenpox	M	97	132	103	98	430
	F	97	111	107	71	386
Hand, foot, and mouth disease	M	10	4	10	4	28
	F	17	11	7		35
Erythema infectiosum	M	28	25	16	14	83
	F	29	33	18	14	94
Exanthem subitum	M	36	44	41	19	140
	F	38	39	28	22	127
Pertussis	M					
	F	2				2
Rubella	M			1		1
	F		1			1
Herpangina	M	3	6	3	6	18
	F	9	7	2	1	19
Measles	M	1				1
	F					
Mumps	M	80	82	84	51	297
	F	86	58	69	51	264
Cold with exanthems by Enterovirus	M	6	2	2	2	12
	F	4	7	4	8	23
Mucocutaneous Lymphnode Syndrome	M	2	2		1	5
	F					
Acute hemorrhagic conjunctivitis	M					
	F					
Epidemic keratoconjunctivitis	M	4	8	5	8	25
	F	7	2	3	3	15
Bacterial meningitis	M			1		1
	F					
Aseptic meningitis	M					
	F				1	1
Mycoplasma pneumonia	M	3		2	3	8
	F	4	1			5
Chlamydial pneumonia (excluding psittacosis)	M		1			1
	F		1			1
Measles in adults	M					
	F					

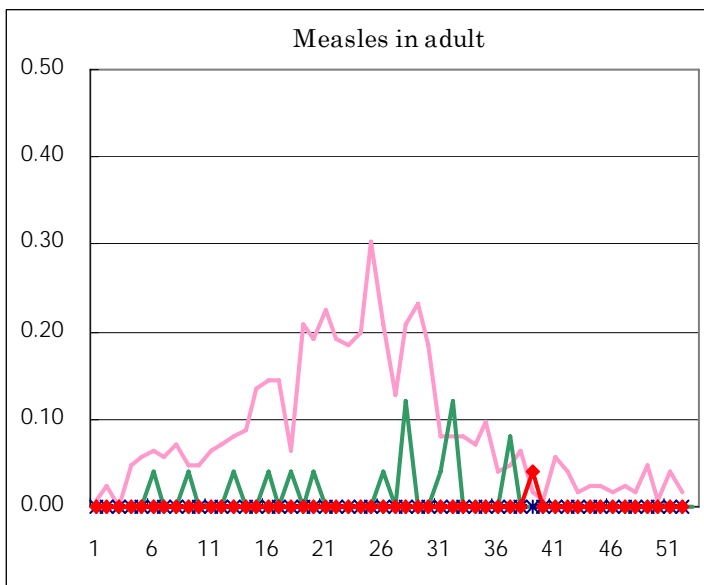
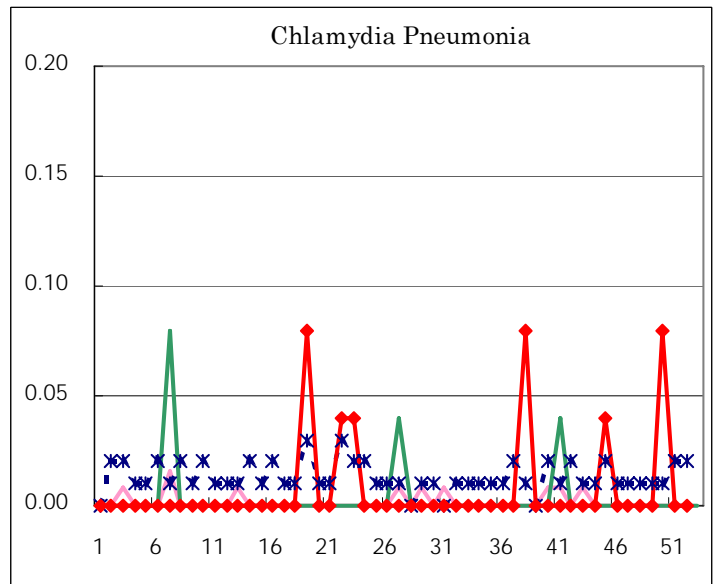
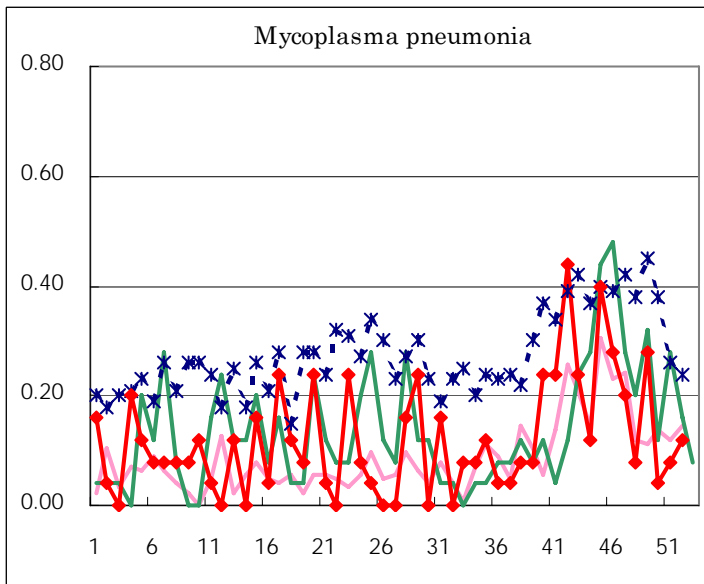
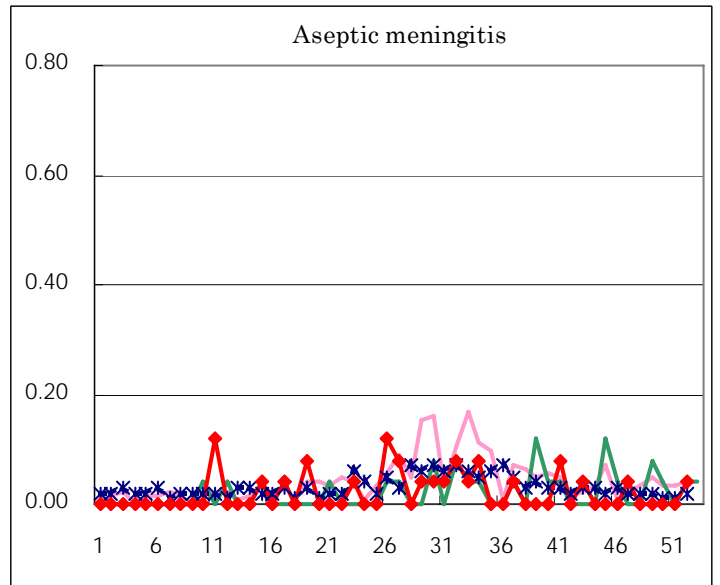
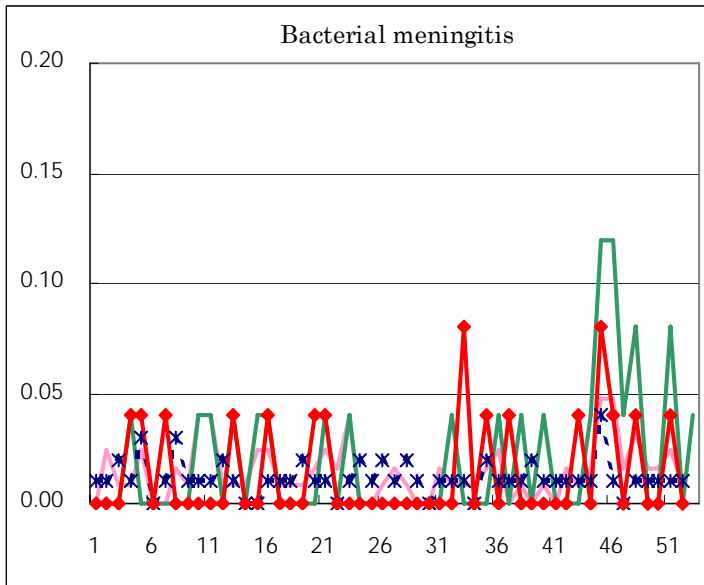
(Blank means 0.)

Disease Trend Graph (weekly reported cases per fixed-point in comparison)









Tokyo Metropolitan Government
Infectious Disease Surveillance Center