

INFECTIOUS DISEASES WEEKLY REPORT

# TOKYO IDWR

Tokyo Metropolitan Institute of Public Health

25 April 2006 / Number 15

- Number of patients with the diseases required notifying all the cases
- Number of patients with the diseases to be reported by the sentinel clinics and hospitals
- Disease trend graph (weekly reported cases per sentinel in comparison)

## Surveillance System in Tokyo, Japan

### The infectious diseases which all physicians must report

All physicians must report to health centers the incidence of the diseases which are shown at page one. Health centers electronically report the individual cases to Tokyo Metropolitan Infectious Disease Surveillance Center.

### The infectious diseases required to be reported by the sentinels

The numbers of patients who visit the sentinel clinics or hospitals during a week are reported to health centers in Tokyo. And they electronically report the numbers to Tokyo Metropolitan Infectious Disease Surveillance Center. We have about 260 sentinel clinics and hospitals in Tokyo.

1<sup>st</sup> Week is early January and 52<sup>nd</sup> Week is end of December.

Tokyo Metropolitan Infectious Disease Surveillance Center  
Tokyo Metropolitan Institute of Public Health

TEL:81-3-3363-3213 FAX:81-3-5332-7365  
e-mail:[idsc@tokyo-eiken.go.jp](mailto:idsc@tokyo-eiken.go.jp)  
URL:[idsc.tokyo-eiken.go.jp/](http://idsc.tokyo-eiken.go.jp/)

## Number of patients with the diseases which all physicians must report

Category	Diseases	Tokyo				Japan		
		12th	13th	14th	15th	Total	15th	Total
I	Ebola hemorrhagic fever							
	Crimean-Congo hemorrhagic fever							
	Severe acute respiratory syndrome							
	Smallpox							
	Plague							
	Marburg disease							
	Lassa fever							
II	Acute poliomyelitis							
	Cholera						1	10
	Shigellosis	1	4		3	22	10	143
	Diphtheria							
	Typhoid fever	1	1		3	10	4	20
	Paratyphoid fever	1	1		2	5	2	7
III	Enterohemorrhagic <i>Escherichia coli</i> infection			1	2	12	23	139
IV	Hepatitis E						2	25
	West Nile fever							
	Hepatitis A	1	1	1	1	15	3	115
	Echinococcosis							7
	Yellow fever							
	Psittacosis					2		6
	Relapsing fever							
	Q fever							
	Rabies							
	High pathogenic avian influenza							
	Coccidioidomycosis							
	Monkeypox							
	Hemorrhagic fever with renal syndrome							
	Anthrax							
	Scrub typhus (Tsutsugamushi disease)						3	24
	Dengue fever		1	1		3	1	12
	Nipah virus infection							
	Japanese spotted fever							
	Japanese encephalitis							
	Hantavirus pulmonary syndrome							
	B virus disease							
	Brucellosis					1		1
Epidemic typhus								
Botulism								
Malaria					4	2	10	
Tularemia								
Lyme disease								
Lyssavirus infection								
Legionellosis		1	1	1	12	3	96	
Leptospirosis								
V	Amebiasis	2	4	2	1	46	7	165
	Acute viral hepatitis(excluding Hepatitis A,Hepatitis E)	1	1			11	5	61
	Acute encephalitis					4		67
	Cryptosporidiosis				1	3	1	4
	Creutzfeldt-Jakob Disease		1	1		8	3	53
	Sever invasive streptococcal infections					2	2	32
	Acquired immunodeficiency syndrome	8	5	10	15	131	17	312
	Giardiasis			3	1	5	1	18
	Meningococcal meningitis				1	1	1	6
	Congenital rubella syndrome							
	Syphilis	1		4	1	24	11	149
	Tetanus				1	2	3	16
	Vancomycin-resistant <i>Staphylococcus aureus</i> infection							
	Vancomycin-resistant <i>enterococcus</i> infection	1	1	1		4	1	16

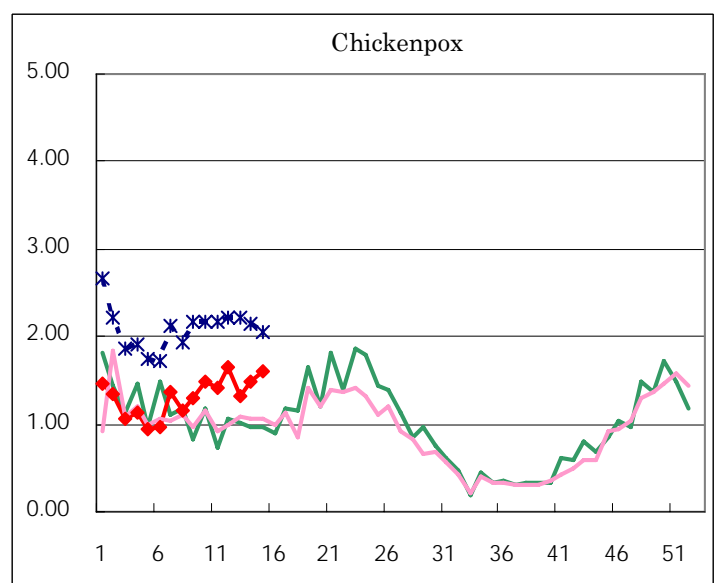
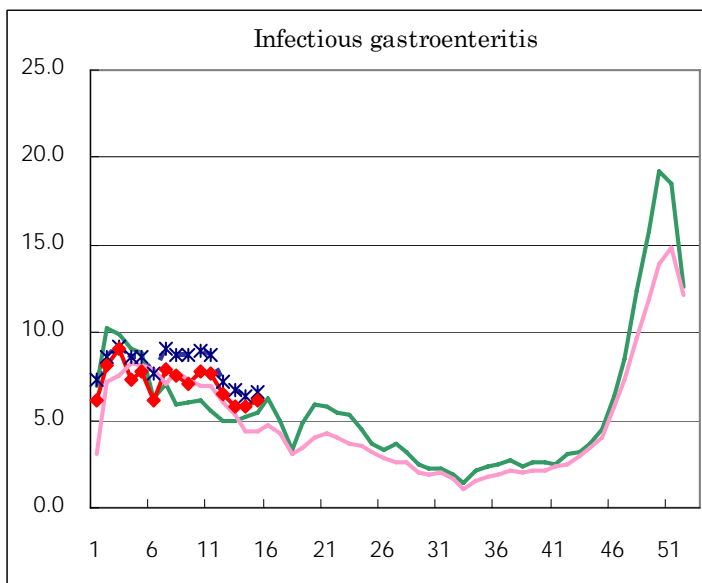
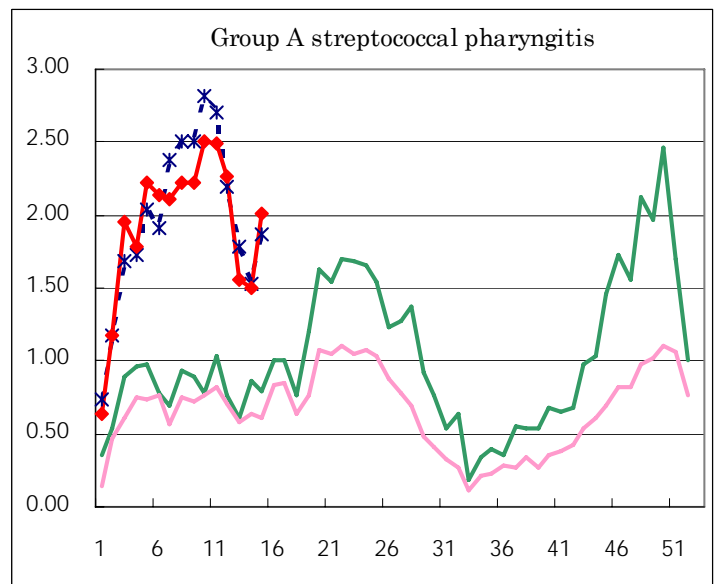
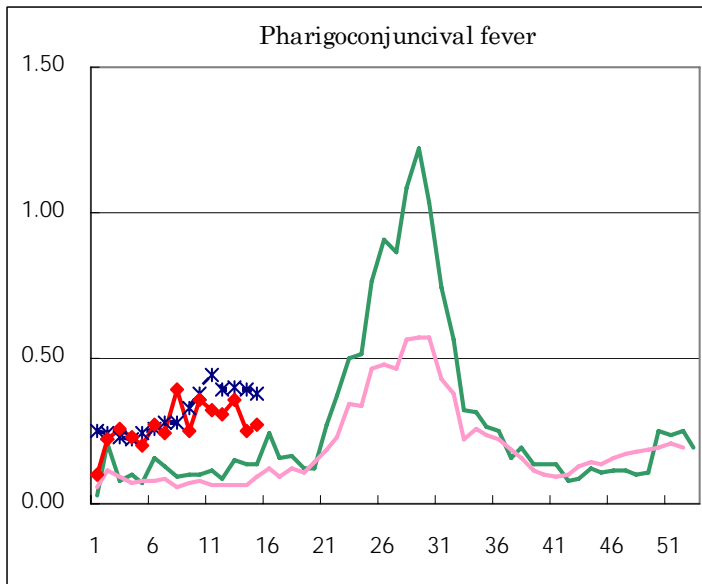
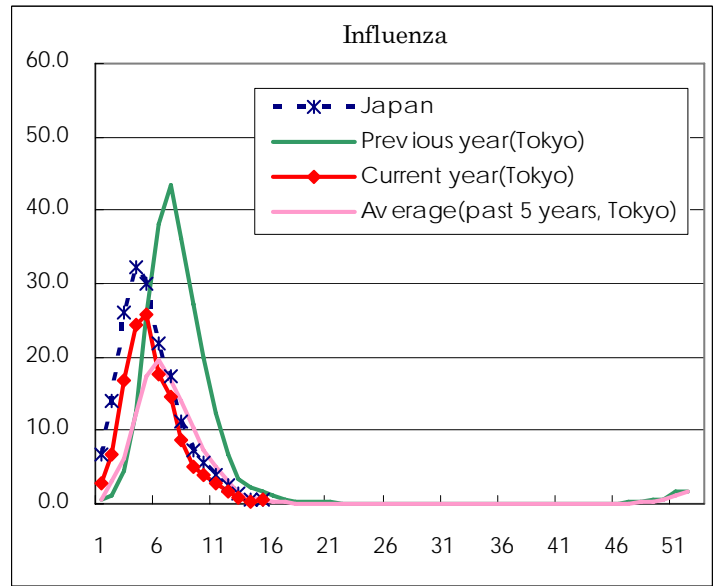
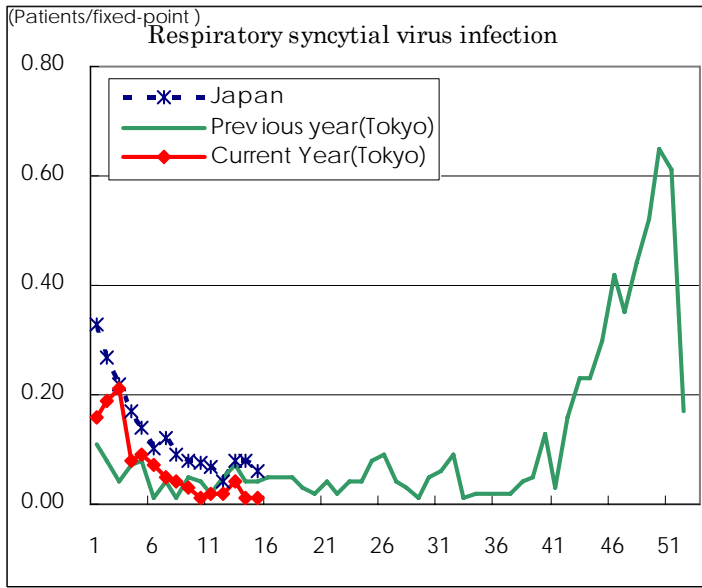
( Blank means 0. )

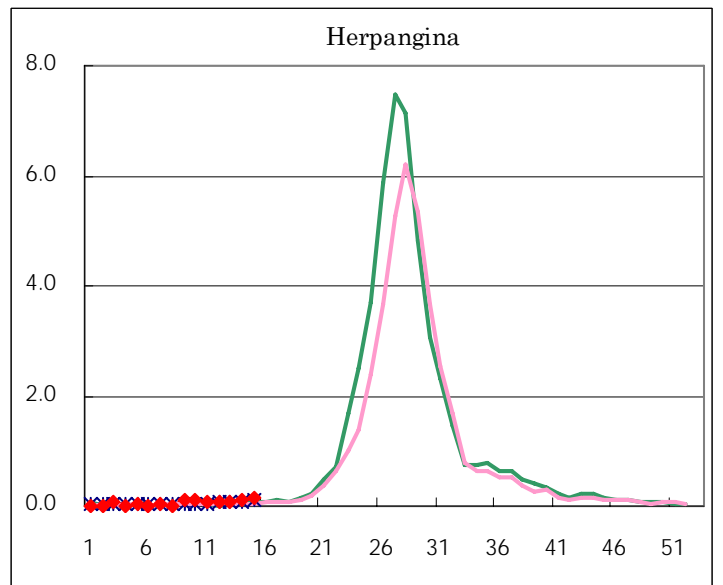
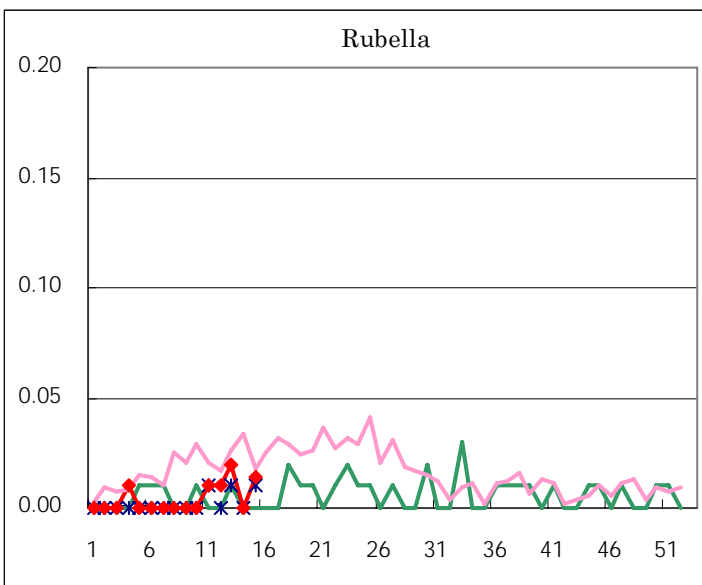
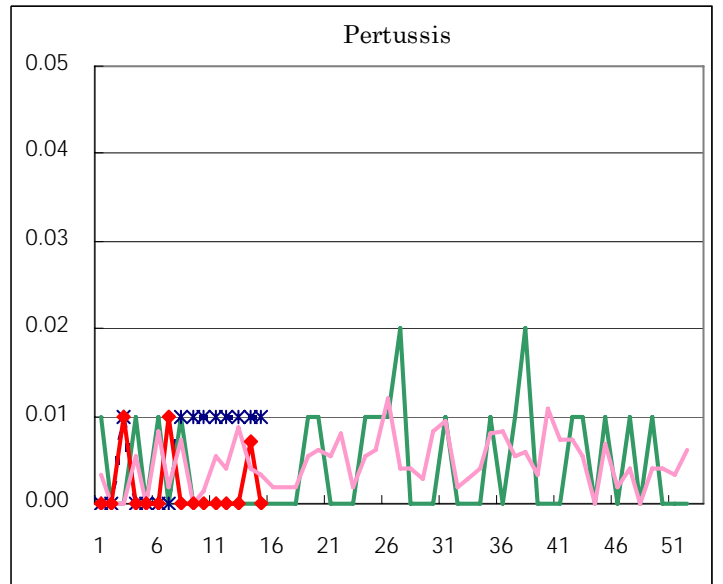
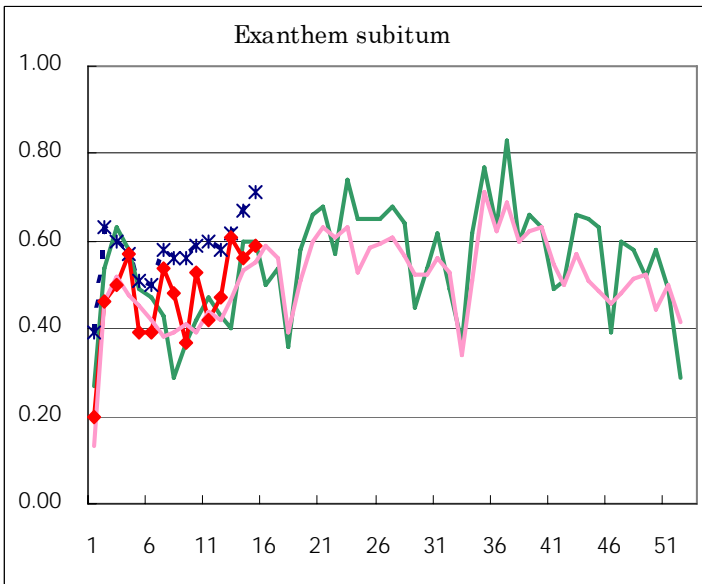
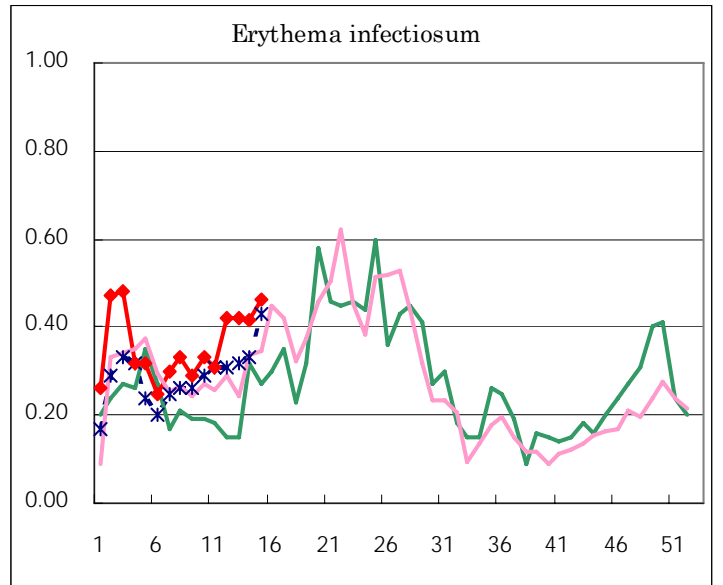
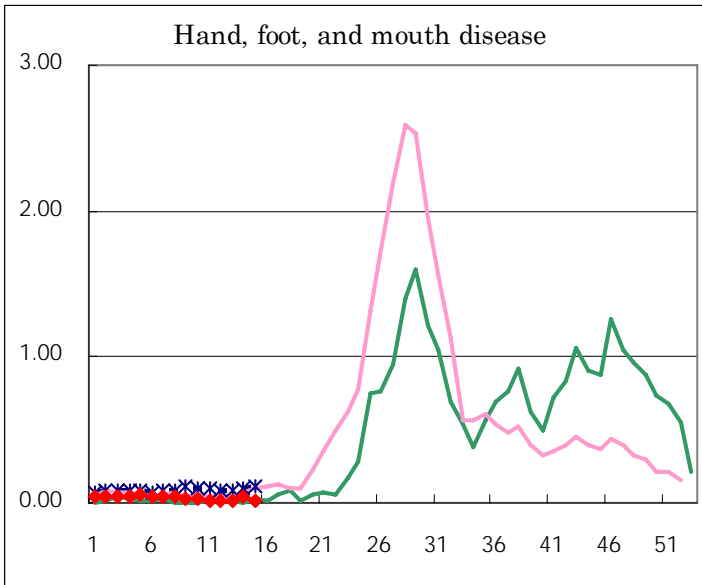
Number of patients with the diseases to be reported  
by the designated clinics and hospitals

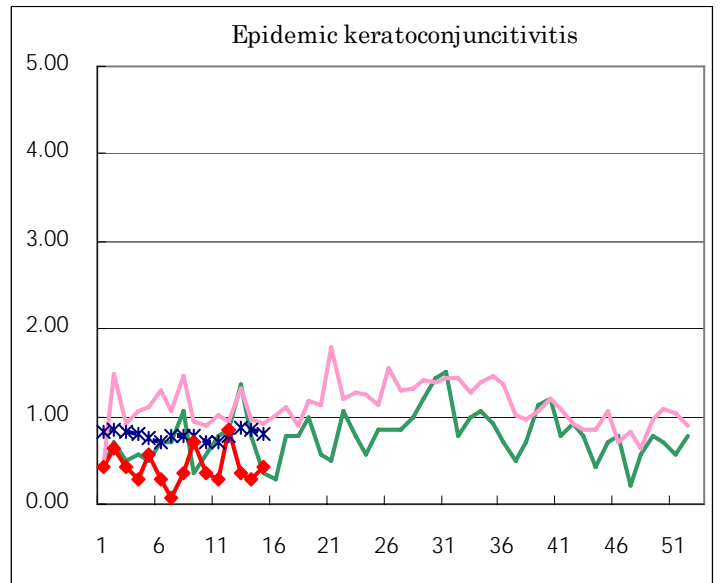
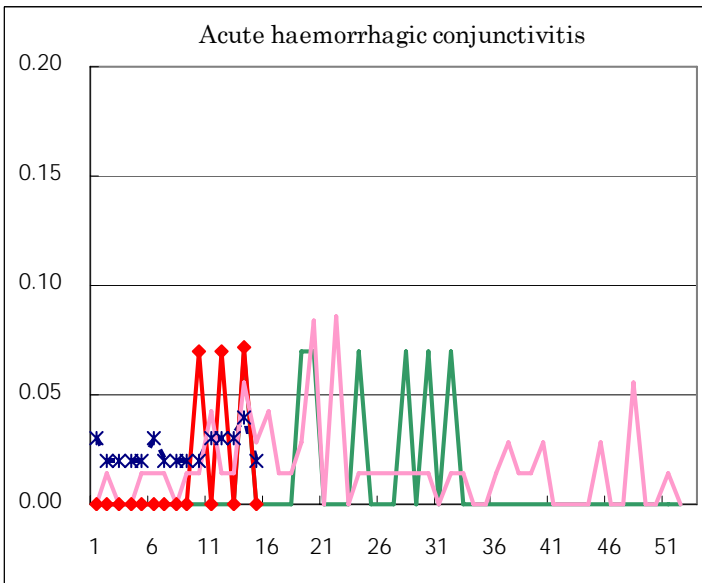
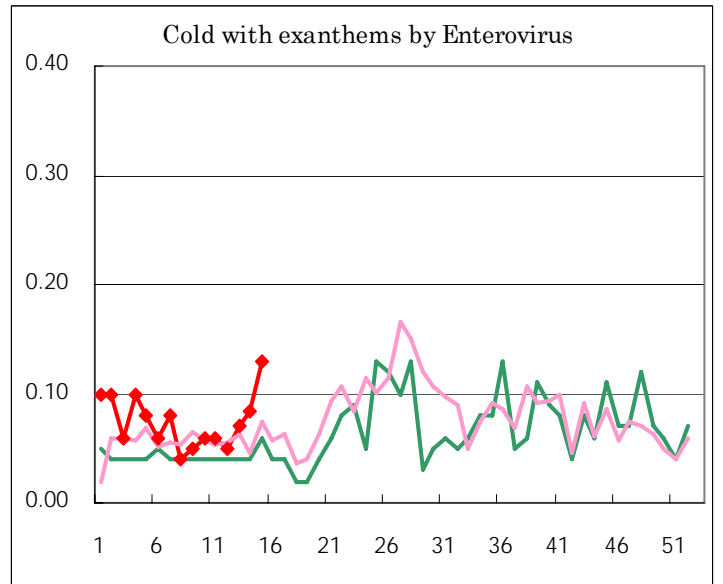
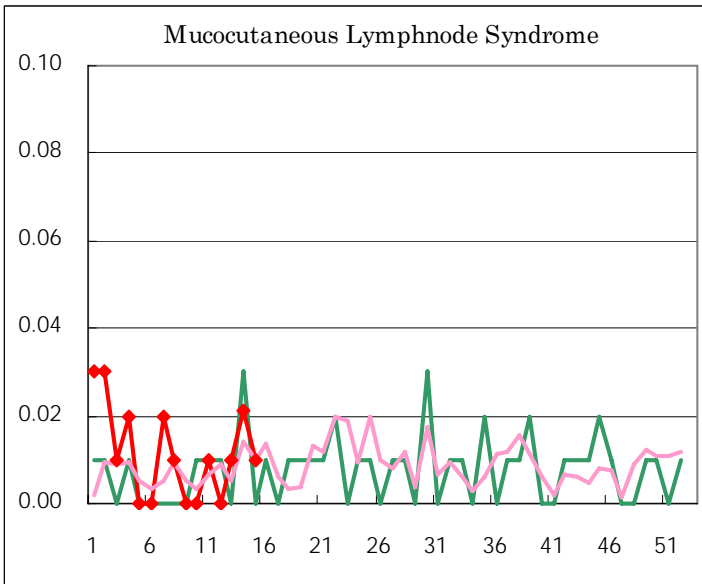
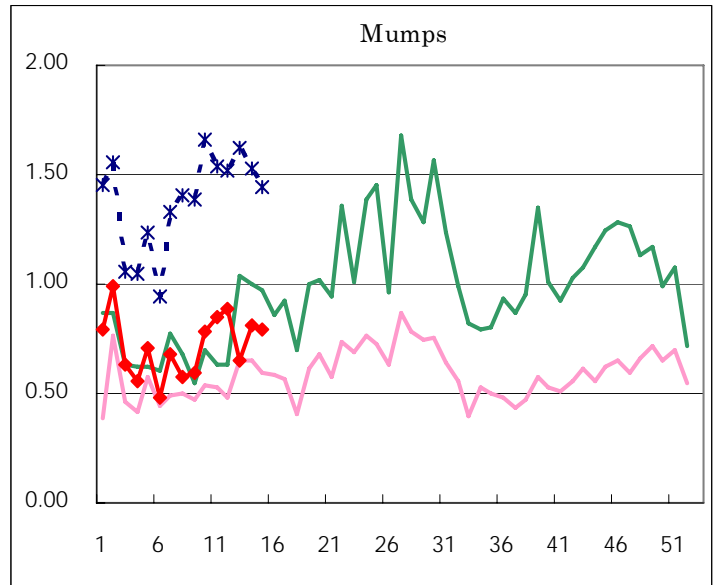
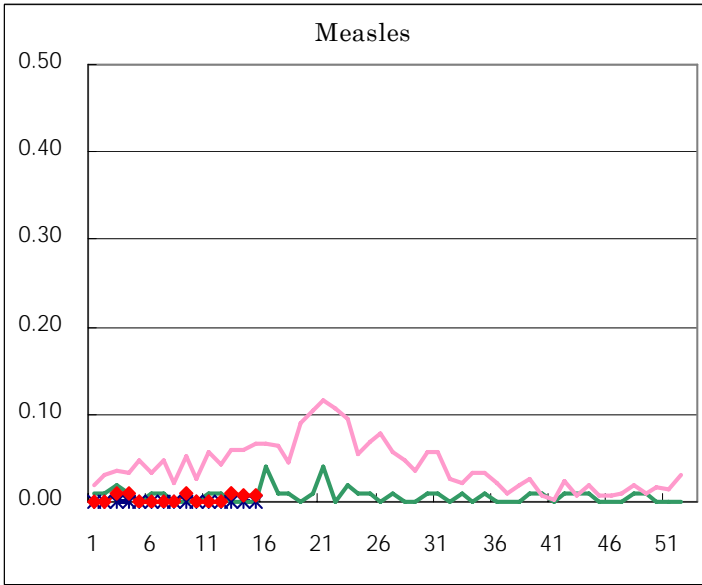
Diseases	Sex	2006				Total
		12th	13th	14th	15th	
Respiratory syncytial virus infection	M	2	4	1	1	8
	F	1	2	1	1	5
Influenza	M	146	78	32	49	305
	F	138	84	31	38	291
Pharyngoconjunctival fever	M	23	23	19	23	88
	F	21	28	17	16	82
Group A streptococcal pharyngitis	M	168	120	117	159	564
	F	154	100	95	127	476
Infectious gastroenteritis	M	475	413	437	482	1,807
	F	446	399	391	387	1,623
Chickenpox	M	133	94	100	117	444
	F	102	95	110	111	418
Hand, foot, and mouth disease	M			5	2	7
	F	3	1	1	1	6
Erythema infectiosum	M	28	33	33	34	128
	F	32	27	26	32	117
Exanthem subitum	M	33	44	45	50	172
	F	34	42	35	34	145
Pertussis	M			1		1
	F					
Rubella	M		2		1	3
	F	1	1		1	3
Herpangina	M	6	5	5	9	25
	F	5	5	10	10	30
Measles	M		1		1	2
	F			1		1
Mumps	M	57	50	67	74	248
	F	69	43	48	38	198
Cold with exanthems by Enterovirus	M	3	3	8	9	23
	F	4	7	4	9	24
Mucocutaneous Lymphnode Syndrome	M		1	1	1	3
	F		1	2	1	4
Acute hemorrhagic conjunctivitis	M	1		1		2
	F					
Epidemic keratoconjunctivitis	M	7	2	2	2	13
	F	5	3	2	4	14
Bacterial meningitis	M					
	F					
Aseptic meningitis	M					
	F					
Mycoplasma pneumonia	M	4	4	3	1	12
	F		1	4	1	6
Chlamydial pneumonia (excluding psittacosis)	M					
	F					
Measles in adults	M					
	F					

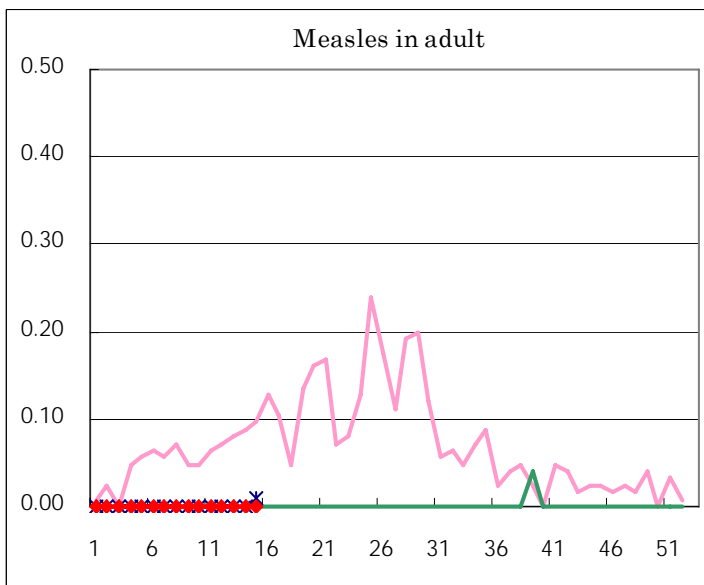
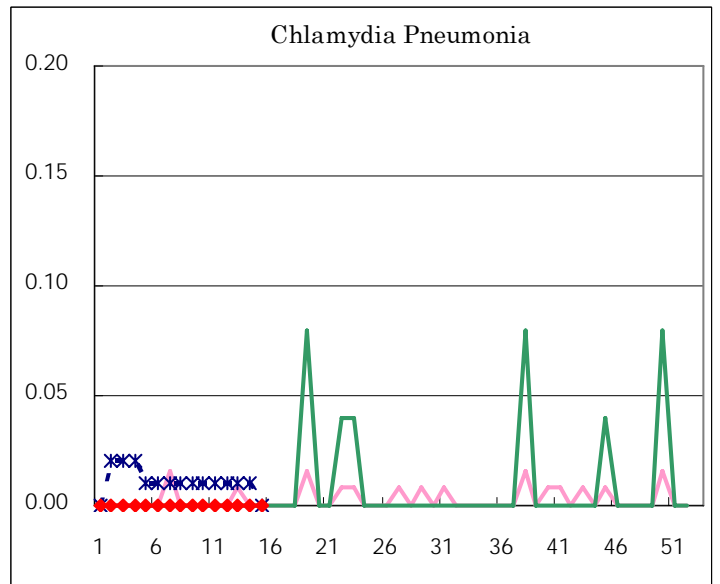
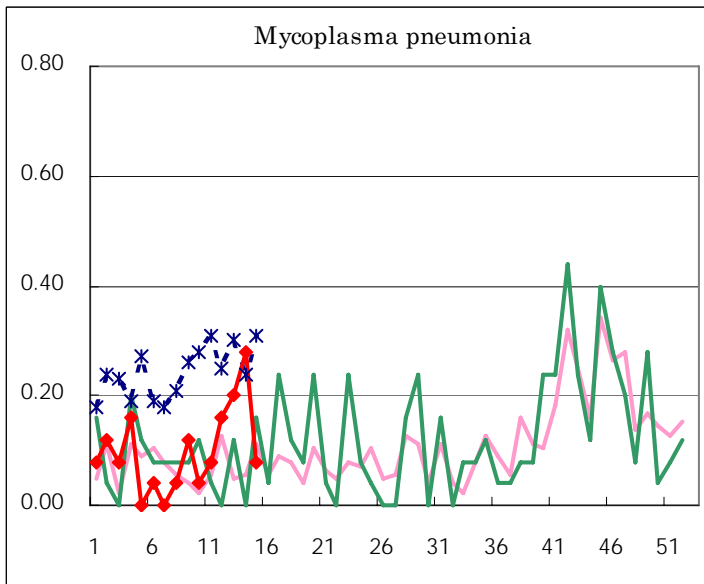
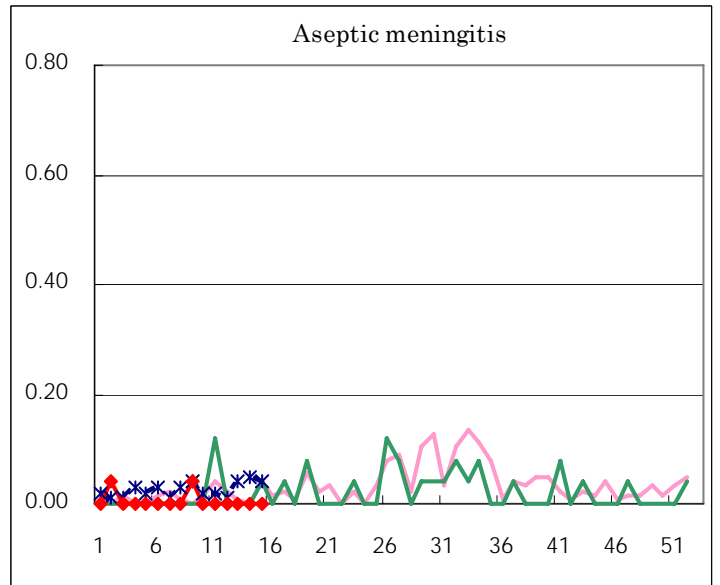
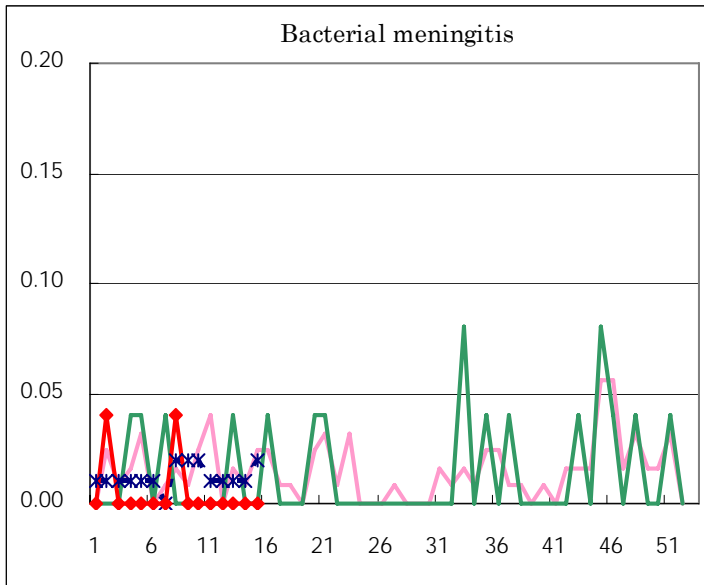
( Blank means 0. )

# Disease Trend Graph (weekly reported cases per fixed-point in comparison)









Tokyo Metropolitan Government  
**Infectious Disease Surveillance Center**